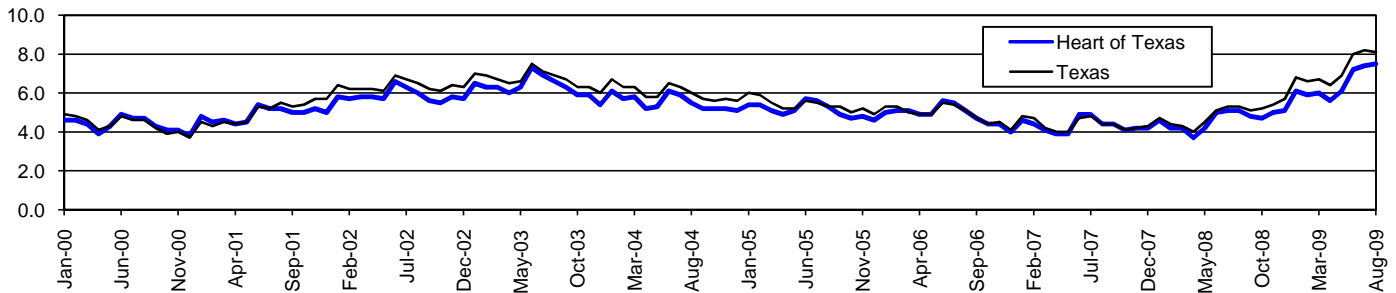


Heart of Texas Workforce Development Area*

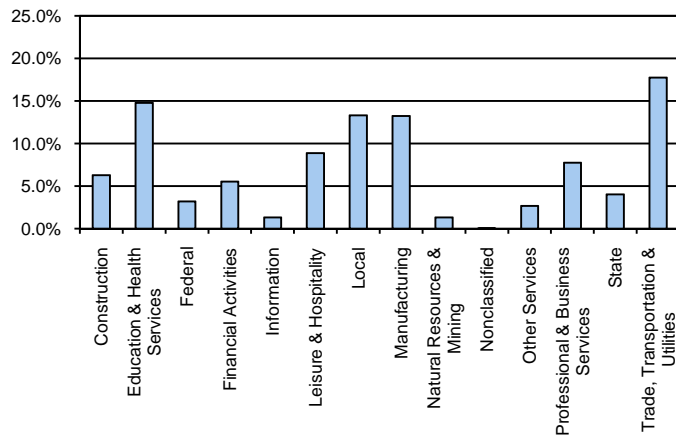
August 2009

Heart of Texas WDA					Texas				
	CLF	Employed	Unemployed	Rate		CLF	Employed	Unemployed	Rate
Aug-09	170,016	157,309	12,707	7.5	Aug-09	12,061,355	11,079,403	981,952	8.1
Jul-09	170,204	157,571	12,633	7.4	Jul-09	12,136,607	11,138,224	998,383	8.2
Aug-08	164,245	155,886	8,359	5.1	Aug-08	11,750,624	11,129,768	620,856	5.3

Historical Unemployment Rates



Heart of Texas WDA Industry Composition 1st Quarter 2009



Total WDA Claims

	Aug-09	Jul-09	Aug-08	OTY
Initial	1,148	1,315	677	471
Continued	7,404	7,278	3,894	3,510
Continued Claims for the Week of the 12th				
Continued	2,810	2,771	1,123	1,687

Texas Unemployment Insurance Claims Filed

	Aug-09	Jul-09	Aug-08	OTY
Initial	98,444	112,737	68,139	30,305
Continued	1,404,113	1,340,360	543,681	860,432
Continued Claims for the Week of the 12th				
Continued	295,488	313,137	125,839	169,649

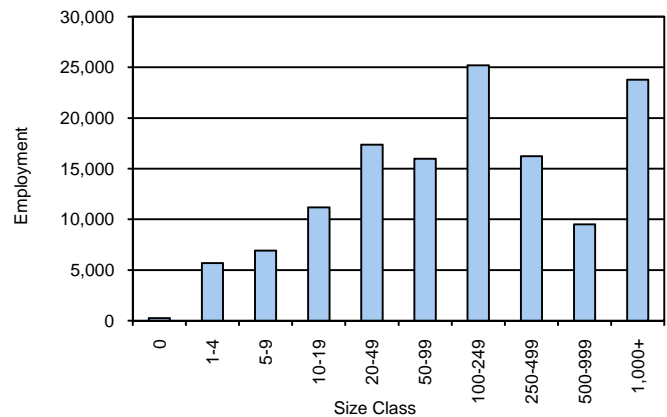
Heart of Texas WDA Average Weekly Wage

	Heart of Texas	WDA Qtr. Chg.	Texas
1st Quarter 2009	\$669.22	-\$24.73	\$884.74
4th Quarter 2008	\$693.95	WDA OTY Chg.	\$932.81
1st Quarter 2008	\$668.56	\$0.66	\$903.44

NAICS Covered Employment Quarterly Data 1st Quarter 2009

SUPER SECTOR	Employment	Change	
		Quarter	Year
Construction	8,270	118	470
Education & Health Services	19,524	-350	771
Federal	4,208	-85	413
Financial Activities	7,288	-402	-332
Information	1,751	-19	-125
Leisure & Hospitality	11,711	-144	375
Local	17,579	43	143
Manufacturing	17,465	-691	-1,104
Natural Resources & Mining	1,750	-135	-37
Nonclassified	64	48	25
Other Services	3,538	-57	-90
Professional & Business Services	10,228	-255	88
State	5,302	59	175
Trade, Transportation & Utilities	23,441	-1,018	-661
TOTAL	132,119	-2,888	111

Size Class Employment Composition 1st Quarter 2009



*Counties in WDA: Bosque, Falls, Freestone, Hill, Limestone, & McLennan