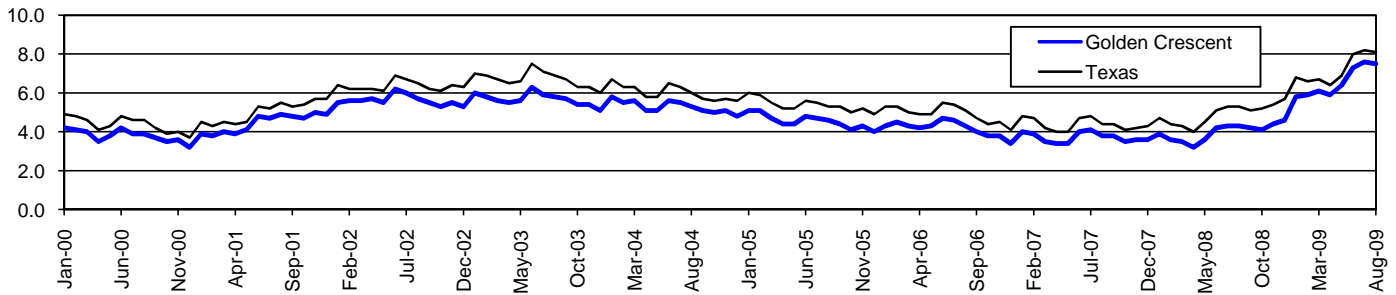


Golden Crescent Workforce Development Area*

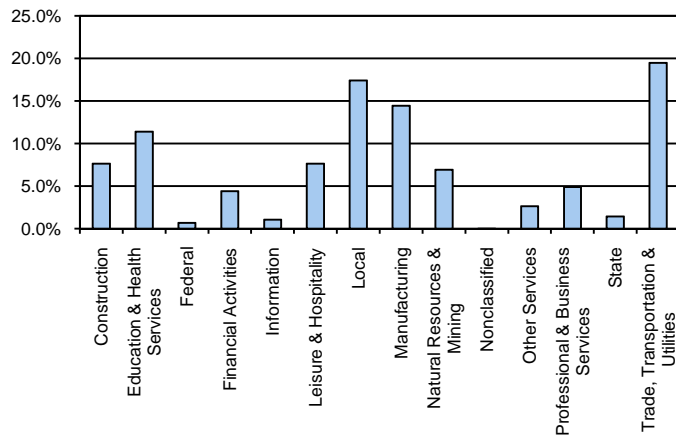
August 2009

Golden Crescent WDA					Texas				
	CLF	Employed	Unemployed	Rate		CLF	Employed	Unemployed	Rate
Aug-09	96,016	88,797	7,219	7.5	Aug-09	12,061,355	11,079,403	981,952	8.1
Jul-09	96,399	89,116	7,283	7.6	Jul-09	12,136,607	11,138,224	998,383	8.2
Aug-08	93,973	89,926	4,047	4.3	Aug-08	11,750,624	11,129,768	620,856	5.3

Historical Unemployment Rates



Golden Crescent WDA Industry Composition 1st Quarter 2009



Total WDA Claims

	Aug-09	Jul-09	Aug-08	OTY
Initial	655	647	301	354
Continued	4,229	4,142	1,469	2,760
Continued Claims for the Week of the 12th				
Continued	1,673	1,797	462	1,211

Texas Unemployment Insurance Claims Filed

	Aug-09	Jul-09	Aug-08	OTY
Initial	98,444	112,737	68,139	30,305
Continued	1,404,113	1,340,360	543,681	860,432
Continued Claims for the Week of the 12th				
Continued	295,488	313,137	125,839	169,649

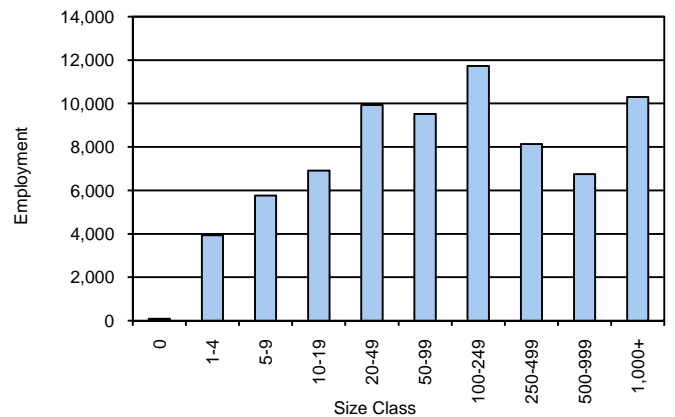
Golden Crescent WDA Average Weekly Wage

	Golden Crescent	WDA Qtr. Chg.	Texas
1st Quarter 2009	\$676.27	-\$79.40	\$884.74
4th Quarter 2008	\$755.67	WDA OTY Chg.	\$932.81
1st Quarter 2008	\$693.98	-\$17.71	\$903.44

NAICS Covered Employment Quarterly Data 1st Quarter 2009

SUPER SECTOR	Employment	Change	
		Quarter	Year
Construction	5,588	-279	-102
Education & Health Services	8,331	-89	-58
Federal	495	-3	-11
Financial Activities	3,204	-31	31
Information	767	10	6
Leisure & Hospitality	5,569	158	152
Local	12,708	316	488
Manufacturing	10,562	-126	-349
Natural Resources & Mining	5,058	-721	-446
Nonclassified	2	0	-9
Other Services	1,929	-6	-44
Professional & Business Services	3,577	22	-138
State	1,036	-6	16
Trade, Transportation & Utilities	14,243	-547	-399
TOTAL	73,069	-1,302	-863

Size Class Employment Composition 1st Quarter 2009



*Counties in WDA: Calhoun, DeWitt, Goliad, Gonzales, Jackson, Lavaca, & Victoria