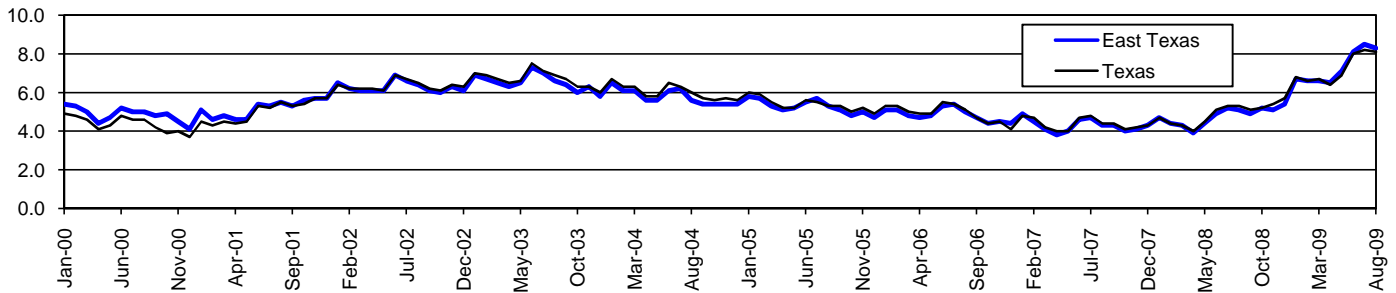


East Texas Workforce Development Area*

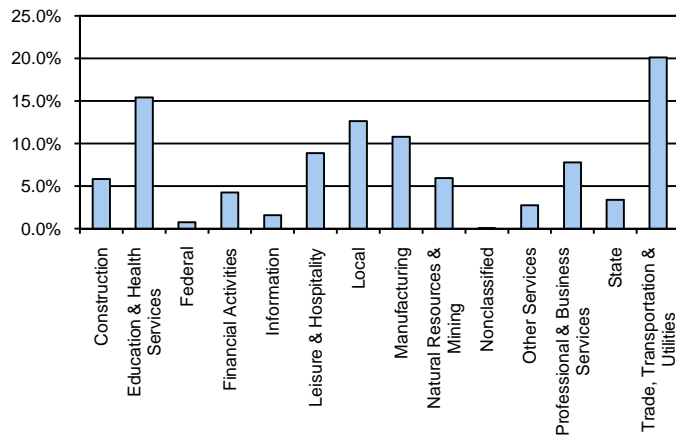
August 2009

East Texas WDA					Texas				
	CLF	Employed	Unemployed	Rate		CLF	Employed	Unemployed	Rate
Aug-09	406,439	372,827	33,612	8.3	Aug-09	12,061,355	11,079,403	981,952	8.1
Jul-09	409,035	374,380	34,655	8.5	Jul-09	12,136,607	11,138,224	998,383	8.2
Aug-08	390,895	371,115	19,780	5.1	Aug-08	11,750,624	11,129,768	620,856	5.3

Historical Unemployment Rates



East Texas WDA Industry Composition 1st Quarter 2009



Total WDA Claims

	Aug-09	Jul-09	Aug-08	OTY
Initial	3,621	3,511	2,123	1,498
Continued	22,987	23,845	9,168	13,819
Continued Claims for the Week of the 12th				
Continued	8,038	9,053	2,804	5,234

Texas Unemployment Insurance Claims Filed

	Aug-09	Jul-09	Aug-08	OTY
Initial	98,444	112,737	68,139	30,305
Continued	1,404,113	1,340,360	543,681	860,432
Continued Claims for the Week of the 12th				
Continued	295,488	313,137	125,839	169,649

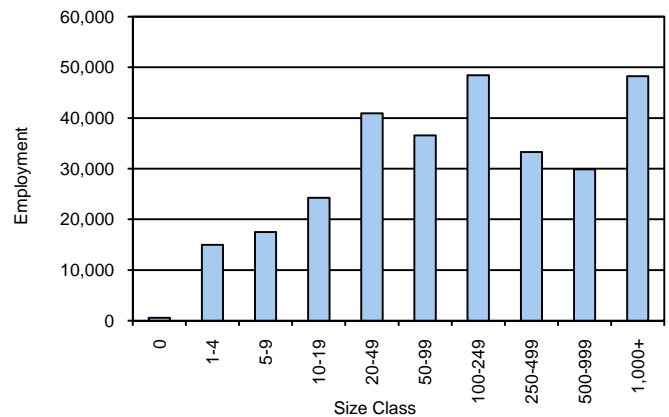
East Texas WDA Average Weekly Wage

	East Texas	WDA Qtr. Chg.	Texas
1st Quarter 2009	\$689.43	-\$74.43	\$884.74
4th Quarter 2008	\$763.86	WDA OTY Chg.	\$932.81
1st Quarter 2008	\$683.67	\$5.76	\$903.44

NAICS Covered Employment Quarterly Data 1st Quarter 2009

SUPER SECTOR	Employment	Change	
		Quarter	Year
Construction	17,157	-1,337	-953
Education & Health Services	45,384	89	1,976
Federal	2,169	-21	-31
Financial Activities	12,452	-125	116
Information	4,668	-34	-141
Leisure & Hospitality	26,132	-1,227	273
Local	37,227	714	1,142
Manufacturing	31,805	-2,480	-4,253
Natural Resources & Mining	17,426	-189	-398
Nonclassified	83	32	23
Other Services	8,063	-129	-203
Professional & Business Services	22,880	-491	34
State	9,959	-383	-279
Trade, Transportation & Utilities	59,229	-1,627	-861
TOTAL	294,634	-7,208	-3,555

Size Class Employment Composition 1st Quarter 2009



*Counties in WDA: Anderson, Camp, Cherokee, Gregg, Harrison, Henderson, Marion, Panola, Rains, Rusk, Smith, Upshur, Van Zandt, & Wood