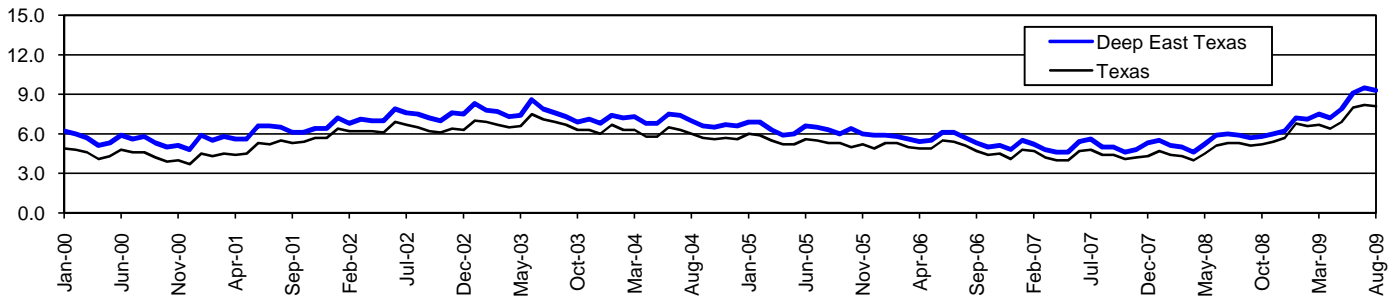


Deep East Texas Workforce Development Area*

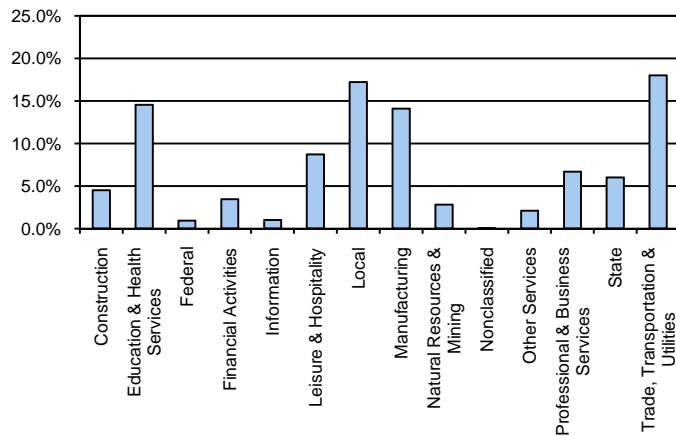
August 2009

Deep East Texas WDA					Texas				
	CLF	Employed	Unemployed	Rate		CLF	Employed	Unemployed	Rate
Aug-09	168,156	152,496	15,660	9.3	Aug-09	12,061,355	11,079,403	981,952	8.1
Jul-09	167,877	151,857	16,020	9.5	Jul-09	12,136,607	11,138,224	998,383	8.2
Aug-08	160,321	150,835	9,486	5.9	Aug-08	11,750,624	11,129,768	620,856	5.3

Historical Unemployment Rates



Deep East Texas WDA Industry Composition 1st Quarter 2009



Total WDA Claims

	Aug-09	Jul-09	Aug-08	OTY
Initial	1,396	1,696	786	610
Continued	11,721	11,983	4,970	6,751
Continued Claims for the Week of the 12th				
Continued	3,605	4,052	1,360	2,245

Texas Unemployment Insurance Claims Filed

	Aug-09	Jul-09	Aug-08	OTY
Initial	98,444	112,737	68,139	30,305
Continued	1,404,113	1,340,360	543,681	860,432
Continued Claims for the Week of the 12th				
Continued	295,488	313,137	125,839	169,649

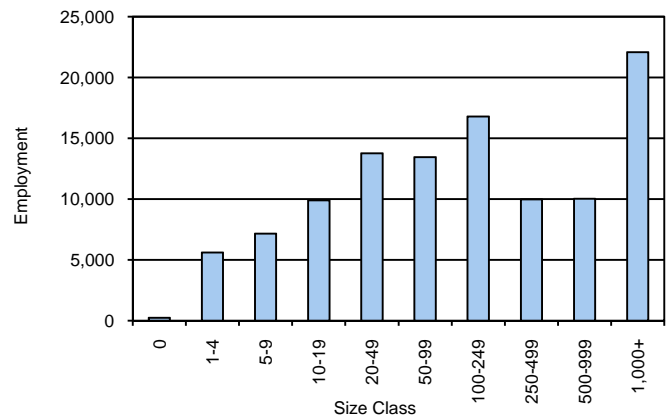
Deep East Texas WDA Average Weekly Wage

	Deep East Tx	WDA Qtr. Chg.	Texas
1st Quarter 2009	\$606.93	-\$46.03	\$884.74
4th Quarter 2008	\$652.96	WDA OTY Chg.	\$932.81
1st Quarter 2008	\$623.12	-\$16.19	\$903.44

NAICS Covered Employment Quarterly Data 1st Quarter 2009

SUPER SECTOR	Employment	Change	
		Quarter	Year
Construction	4,914	-67	60
Education & Health Services	15,841	26	365
Federal	1,020	-18	-74
Financial Activities	3,740	-96	-24
Information	1,096	22	39
Leisure & Hospitality	9,469	68	301
Local	18,763	-43	25
Manufacturing	15,334	-1,065	-1,065
Natural Resources & Mining	3,063	-126	-135
Nonclassified	20	-6	-10
Other Services	2,263	4	-135
Professional & Business Services	7,273	-284	-289
State	6,557	49	209
Trade, Transportation & Utilities	19,592	-448	-96
TOTAL	108,945	-1,984	-829

Size Class Employment Composition 1st Quarter 2009



*Counties in WDA: Angelina, Houston, Jasper, Nacogdoches, Newton, Polk, Sabine, San Augustine, San Jacinto, Shelby, Trinity, & Tyler