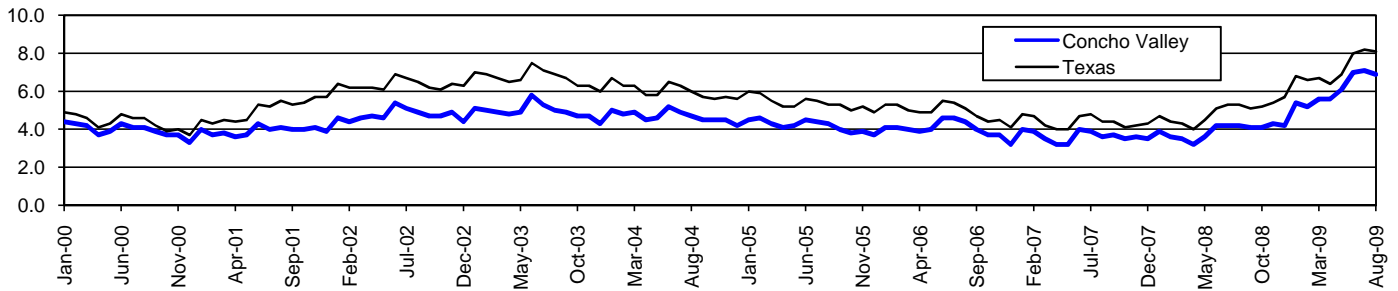


Concho Valley Workforce Development Area*

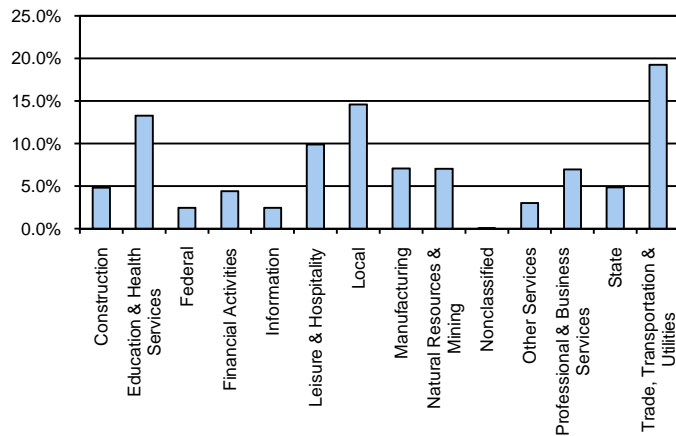
August 2009

Concho Valley WDA					Texas				
	CLF	Employed	Unemployed	Rate		CLF	Employed	Unemployed	Rate
Aug-09	79,250	73,779	5,471	6.9	Aug-09	12,061,355	11,079,403	981,952	8.1
Jul-09	79,304	73,708	5,596	7.1	Jul-09	12,136,607	11,138,224	998,383	8.2
Aug-08	76,250	73,016	3,234	4.2	Aug-08	11,750,624	11,129,768	620,856	5.3

Historical Unemployment Rates



Concho Valley WDA Industry Composition 1st Quarter 2009



Total WDA Claims

	Aug-09	Jul-09	Aug-08	OTY
Initial	440	463	211	229
Continued	3,280	3,473	766	2,514
Continued Claims for the Week of the 12th				
Continued	1,181	1,285	292	889

Texas Unemployment Insurance Claims Filed

	Aug-09	Jul-09	Aug-08	OTY
Initial	98,444	112,737	68,139	30,305
Continued	1,404,113	1,340,360	543,681	860,432
Continued Claims for the Week of the 12th				
Continued	295,488	313,137	125,839	169,649

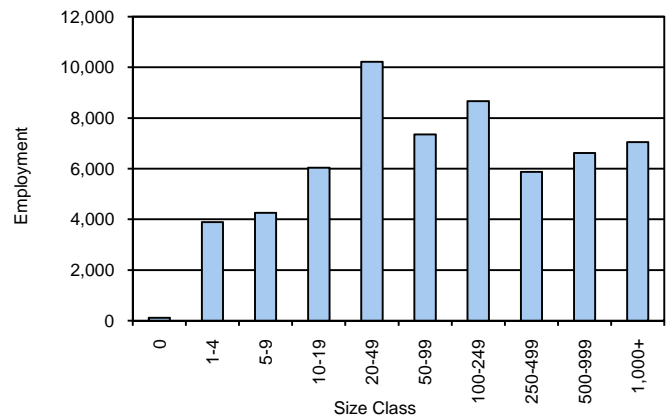
Concho Valley WDA Average Weekly Wage

	Concho Valley	WDA Qtr. Chg.	Texas
1st Quarter 2009	\$647.12	-\$53.54	\$884.74
4th Quarter 2008	\$700.66	WDA OTY Chg.	\$932.81
1st Quarter 2008	\$631.66	\$15.46	\$903.44

NAICS Covered Employment Quarterly Data 1st Quarter 2009

SUPER SECTOR	Employment	Change	
		Quarter	Year
Construction	2,882	-33	13
Education & Health Services	7,979	-342	30
Federal	1,470	17	101
Financial Activities	2,646	40	29
Information	1,459	-88	-271
Leisure & Hospitality	5,944	91	50
Local	8,753	141	22
Manufacturing	4,236	-225	-45
Natural Resources & Mining	4,218	-506	-63
Nonclassified	32	5	2
Other Services	1,817	-18	-132
Professional & Business Services	4,180	-103	-77
State	2,903	-2	-150
Trade, Transportation & Utilities	11,552	-789	-161
TOTAL	60,071	-1,812	-652

Size Class Employment Composition 1st Quarter 2009



*Counties in WDA: Coke, Concho, Crockett, Irion, Kimble, McCulloch, Mason, Menard, Reagan, Schleicher, Sterling, Sutton, & Tom Green