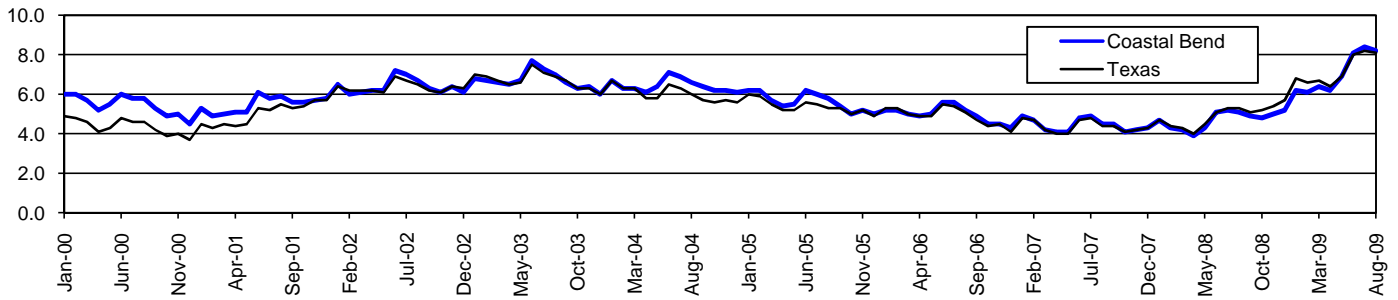


# Coastal Bend Workforce Development Area\*

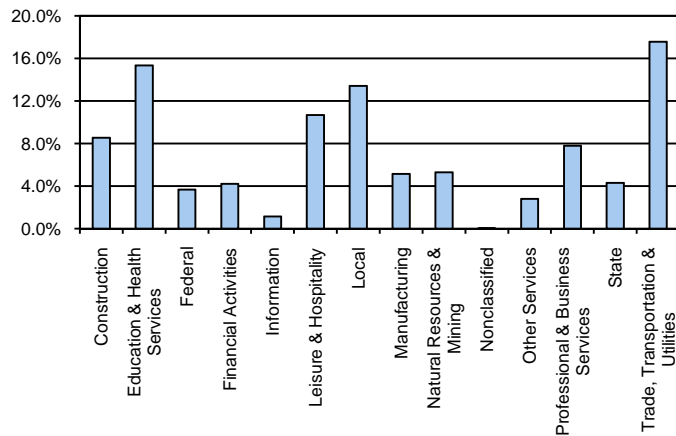
## August 2009

Coastal Bend WDA					Texas				
	CLF	Employed	Unemployed	Rate		CLF	Employed	Unemployed	Rate
<b>Aug-09</b>	279,038	256,229	22,809	8.2	<b>Aug-09</b>	12,061,355	11,079,403	981,952	8.1
<b>Jul-09</b>	281,241	257,690	23,551	8.4	<b>Jul-09</b>	12,136,607	11,138,224	998,383	8.2
<b>Aug-08</b>	273,040	258,998	14,042	5.1	<b>Aug-08</b>	11,750,624	11,129,768	620,856	5.3

### Historical Unemployment Rates



### Coastal Bend WDA Industry Composition 1st Quarter 2009



### Total WDA Claims

	Aug-09	Jul-09	Aug-08	OTY
<b>Initial</b>	2,215	2,467	1,284	<b>931</b>
<b>Continued</b>	15,643	16,125	6,970	<b>8,673</b>
<b>Continued Claims for the Week of the 12th</b>				
<b>Continued</b>	5,568	6,272	2,110	<b>3,458</b>

### Texas Unemployment Insurance Claims Filed

	Aug-09	Jul-09	Aug-08	OTY
<b>Initial</b>	98,444	112,737	68,139	<b>30,305</b>
<b>Continued</b>	1,404,113	1,340,360	543,681	<b>860,432</b>
<b>Continued Claims for the Week of the 12th</b>				
<b>Continued</b>	295,488	313,137	125,839	<b>169,649</b>

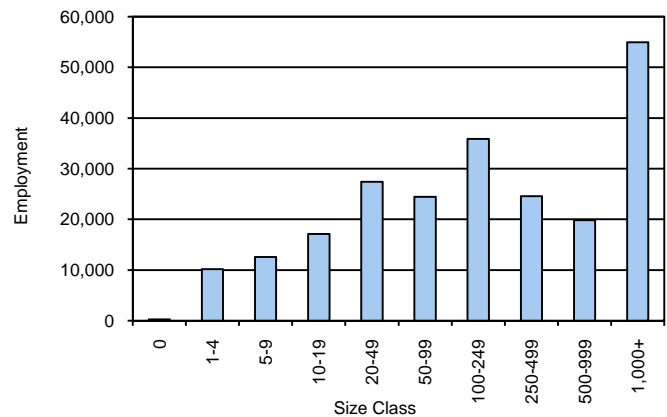
### Coastal Bend WDA Average Weekly Wage

	Coastal Bend	WDA Qtr. Chg.	Texas
<b>1st Quarter 2009</b>	\$706.39	-\$75.06	\$884.74
<b>4th Quarter 2008</b>	\$781.45	<b>WDA OTY Chg.</b>	\$932.81
<b>1st Quarter 2008</b>	\$724.53	-\$18.14	\$903.44

### NAICS Covered Employment Quarterly Data 1st Quarter 2009

SUPER SECTOR	Employment	Change	
		Quarter	Year
Construction	19,364	-783	-28
Education & Health Services	34,854	74	1,213
Federal	8,341	-69	292
Financial Activities	9,583	-270	-453
Information	2,622	-34	-137
Leisure & Hospitality	24,241	-219	-1
Local	30,453	434	401
Manufacturing	11,692	-309	-711
Natural Resources & Mining	12,048	-2,196	-666
Nonclassified	70	23	-9
Other Services	6,384	-293	-170
Professional & Business Services	17,707	-802	-1,004
State	9,793	-30	717
Trade, Transportation & Utilities	39,913	-1,317	-952
<b>TOTAL</b>	<b>227,065</b>	<b>-5,791</b>	<b>-1,508</b>

### Size Class Employment Composition 1st Quarter 2009



\*Counties in WDA: Aransas, Bee, Brooks, Duval, Jim Wells, Kenedy, Kleberg, Live Oak, McMullen, Nueces, Refugio, & San Patricio

Available at <http://www.tracer2.com/>