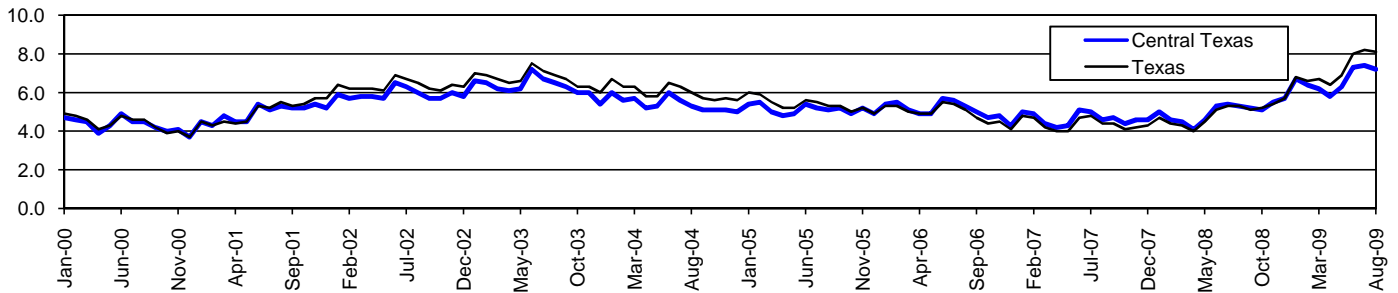


Central Texas Workforce Development Area*

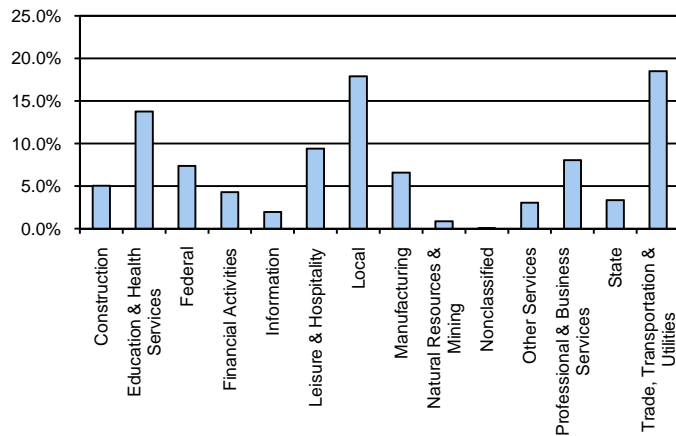
August 2009

Central Texas WDA					Texas				
	CLF	Employed	Unemployed	Rate		CLF	Employed	Unemployed	Rate
Aug-09	183,513	170,378	13,135	7.2	Aug-09	12,061,355	11,079,403	981,952	8.1
Jul-09	185,036	171,391	13,645	7.4	Jul-09	12,136,607	11,138,224	998,383	8.2
Aug-08	180,264	170,683	9,581	5.3	Aug-08	11,750,624	11,129,768	620,856	5.3

Historical Unemployment Rates



Central Texas WDA Industry Composition 1st Quarter 2009



Total WDA Claims

	Aug-09	Jul-09	Aug-08	OTY
Initial	1,228	1,304	948	280
Continued	5,212	5,116	3,622	1,590
Continued Claims for the Week of the 12th				
Continued	2,152	2,414	1,233	919

Texas Unemployment Insurance Claims Filed

	Aug-09	Jul-09	Aug-08	OTY
Initial	98,444	112,737	68,139	30,305
Continued	1,404,113	1,340,360	543,681	860,432
Continued Claims for the Week of the 12th				
Continued	295,488	313,137	125,839	169,649

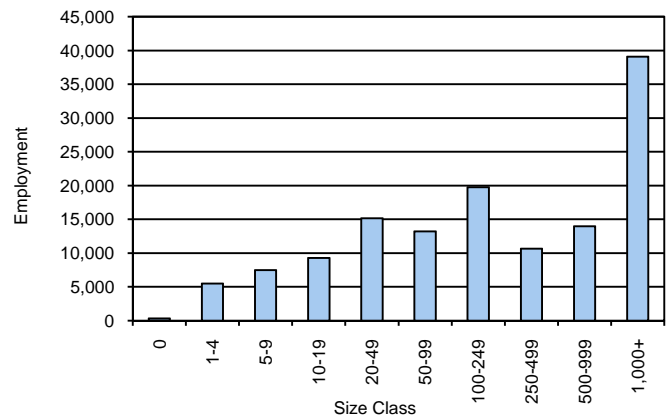
Central Texas WDA Average Weekly Wage

	Central Texas	WDA Qtr. Chg.	Texas
1st Quarter 2009	\$662.71	-\$23.80	\$884.74
4th Quarter 2008	\$686.51	WDA OTY Chg.	\$932.81
1st Quarter 2008	\$652.82	\$9.89	\$903.44

NAICS Covered Employment Quarterly Data 1st Quarter 2009

SUPER SECTOR	Employment	Change	
		Quarter	Year
Construction	6,786	-367	-110
Education & Health Services	18,488	117	929
Federal	9,884	49	1,041
Financial Activities	5,745	-320	-567
Information	2,612	-41	-199
Leisure & Hospitality	12,620	-29	63
Local	24,063	-526	22
Manufacturing	8,820	-753	-1,301
Natural Resources & Mining	1,138	6	18
Nonclassified	39	17	5
Other Services	4,099	-140	14
Professional & Business Services	10,784	-287	-588
State	4,492	103	196
Trade, Transportation & Utilities	24,866	-878	-628
TOTAL	134,436	-3,049	-1,105

Size Class Employment Composition 1st Quarter 2009



*Counties in WDA: Bell, Coryell, Hamilton, Lampasas, Milam, Mills, & San Saba