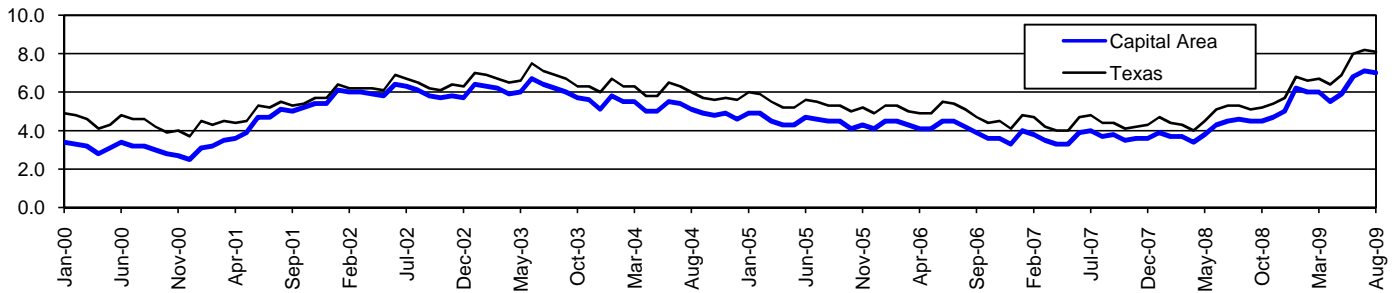


Capital Area Workforce Development Area*

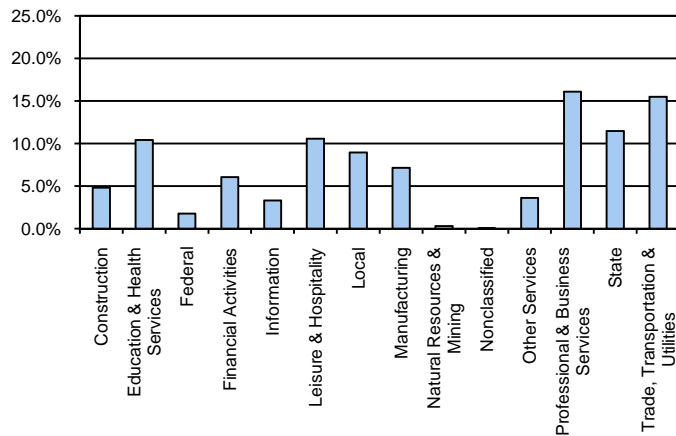
August 2009

Capital Area WDA					Texas				
	CLF	Employed	Unemployed	Rate		CLF	Employed	Unemployed	Rate
Aug-09	560,755	521,443	39,312	7.0	Aug-09	12,061,355	11,079,403	981,952	8.1
Jul-09	563,559	523,609	39,950	7.1	Jul-09	12,136,607	11,138,224	998,383	8.2
Aug-08	544,666	519,431	25,235	4.6	Aug-08	11,750,624	11,129,768	620,856	5.3

Historical Unemployment Rates



Capital Area WDA Industry Composition 1st Quarter 2009



Total WDA Claims

	Aug-09	Jul-09	Aug-08	OTY
Initial	3,340	4,060	2,736	604
Continued	15,406	15,643	10,643	4,763
Continued Claims for the Week of the 12th				
Continued	9,796	10,545	4,587	5,209

Texas Unemployment Insurance Claims Filed

	Aug-09	Jul-09	Aug-08	OTY
Initial	98,444	112,737	68,139	30,305
Continued	1,404,113	1,340,360	543,681	860,432
Continued Claims for the Week of the 12th				
Continued	295,488	313,137	125,839	169,649

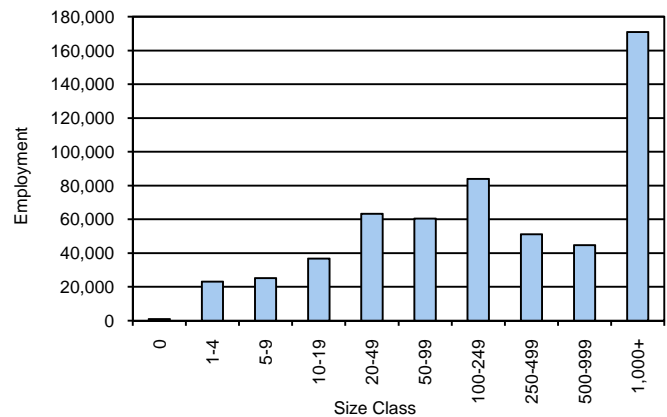
Capital Area WDA Average Weekly Wage

	Capital Area	WDA Qtr. Chg.	Texas
1st Quarter 2009	\$954.77	-\$59.71	\$884.74
4th Quarter 2008	\$1,014.48	WDA OTY Chg.	\$932.81
1st Quarter 2008	\$978.51	-\$23.74	\$903.44

NAICS Covered Employment Quarterly Data 1st Quarter 2009

SUPER SECTOR	Employment	Change	
		Quarter	Year
Construction	26,904	-2,632	-4,604
Education & Health Services	58,309	-593	1,645
Federal	9,833	1,352	185
Financial Activities	33,940	-1,260	-1,150
Information	18,623	-355	-271
Leisure & Hospitality	59,144	-1,135	930
Local	50,156	-471	890
Manufacturing	39,964	-4,373	-6,357
Natural Resources & Mining	1,723	-50	-16
Nonclassified	266	133	12
Other Services	20,203	161	817
Professional & Business Services	90,314	-3,072	-2,093
State	64,358	191	2,244
Trade, Transportation & Utilities	86,909	-5,457	-3,212
TOTAL	560,646	-17,561	-10,980

Size Class Employment Composition 1st Quarter 2009



*Counties in WDA: Travis

Available at <http://www.tracer2.com/>