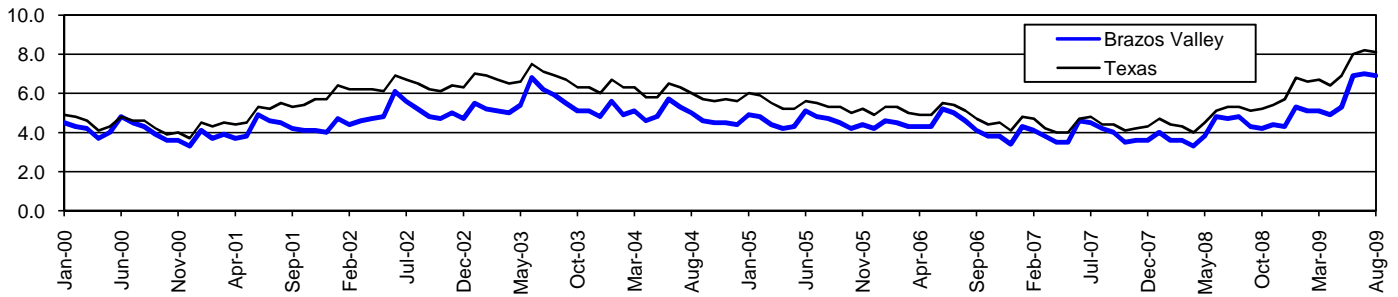


# Brazos Valley Workforce Development Area\*

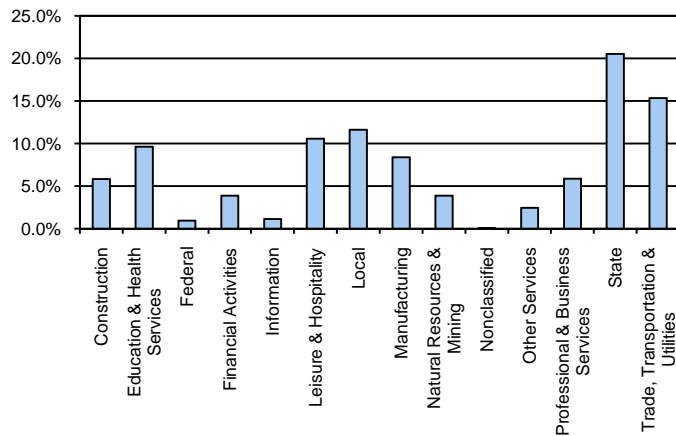
## August 2009

Brazos Valley WDA					Texas				
	CLF	Employed	Unemployed	Rate		CLF	Employed	Unemployed	Rate
<b>Aug-09</b>	146,643	136,591	10,052	6.9	<b>Aug-09</b>	12,061,355	11,079,403	981,952	8.1
<b>Jul-09</b>	147,027	136,696	10,331	7.0	<b>Jul-09</b>	12,136,607	11,138,224	998,383	8.2
<b>Aug-08</b>	142,701	135,899	6,802	4.8	<b>Aug-08</b>	11,750,624	11,129,768	620,856	5.3

### Historical Unemployment Rates



### Brazos Valley WDA Industry Composition 1st Quarter 2009



### Total WDA Claims

	Aug-09	Jul-09	Aug-08	OTY
<b>Initial</b>	713	845	422	<b>291</b>
<b>Continued</b>	5,206	4,976	2,118	<b>3,088</b>
<b>Continued Claims for the Week of the 12th</b>				
<b>Continued</b>	1,878	2,022	696	<b>1,182</b>

### Texas Unemployment Insurance Claims Filed

	Aug-09	Jul-09	Aug-08	OTY
<b>Initial</b>	98,444	112,737	68,139	<b>30,305</b>
<b>Continued</b>	1,404,113	1,340,360	543,681	<b>860,432</b>
<b>Continued Claims for the Week of the 12th</b>				
<b>Continued</b>	295,488	313,137	125,839	<b>169,649</b>

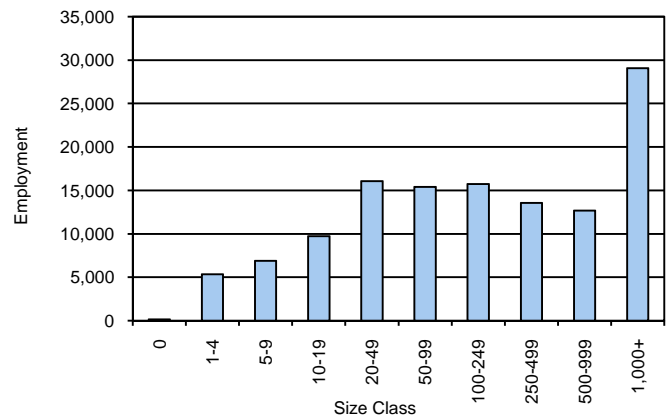
### Brazos Valley WDA Average Weekly Wage

	Brazos Valley	WDA Qtr. Chg.	Texas
<b>1st Quarter 2009</b>	\$644.19	-\$56.58	\$884.74
<b>4th Quarter 2008</b>	\$700.77	<b>WDA OTY Chg.</b>	\$932.81
<b>1st Quarter 2008</b>	\$647.16	-\$2.97	\$903.44

### NAICS Covered Employment Quarterly Data 1st Quarter 2009

SUPER SECTOR	Employment	Change	
		Quarter	Year
Construction	7,238	-877	-284
Education & Health Services	11,974	-196	240
Federal	1,167	-9	-17
Financial Activities	4,840	35	336
Information	1,396	-5	-19
Leisure & Hospitality	13,161	91	1,130
Local	14,450	58	729
Manufacturing	10,430	-351	-313
Natural Resources & Mining	4,838	-394	250
Nonclassified	60	34	31
Other Services	3,044	20	190
Professional & Business Services	7,285	352	754
State	25,556	-549	1,458
Trade, Transportation & Utilities	19,098	-582	110
<b>TOTAL</b>	<b>124,537</b>	<b>-2,373</b>	<b>4,595</b>

### Size Class Employment Composition 1st Quarter 2009



\*Counties in WDA: Brazos, Burleson, Grimes, Leon, Madison, Robertson, & Washington