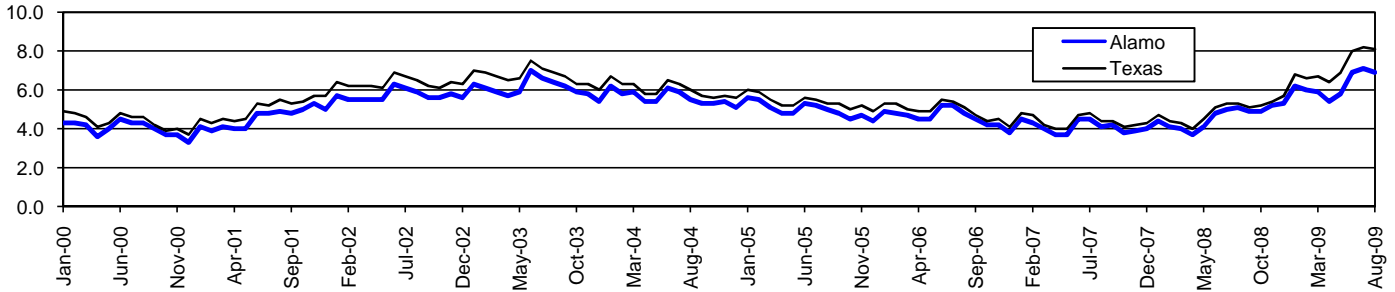


Alamo Workforce Development Area*

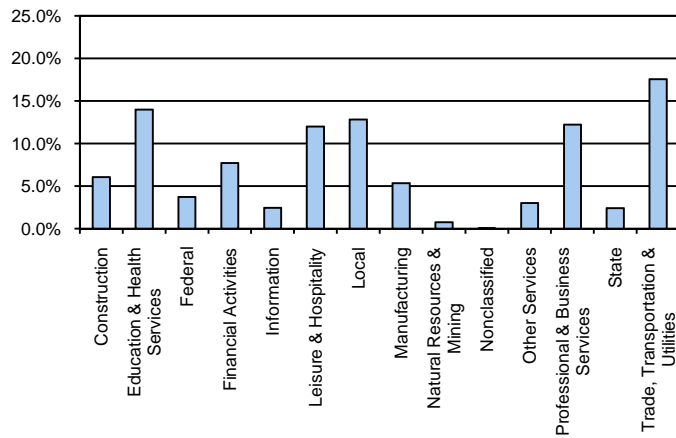
August 2009

Alamo WDA					Texas				
	CLF	Employed	Unemployed	Rate		CLF	Employed	Unemployed	Rate
Aug-09	1,026,538	955,461	71,077	6.9	Aug-09	12,061,355	11,079,403	981,952	8.1
Jul-09	1,034,033	961,126	72,907	7.1	Jul-09	12,136,607	11,138,224	998,383	8.2
Aug-08	999,978	949,016	50,962	5.1	Aug-08	11,750,624	11,129,768	620,856	5.3

Historical Unemployment Rates



Alamo WDA Industry Composition 1st Quarter 2009



Total WDA Claims

	Aug-09	Jul-09	Aug-08	OTY
Initial	6,673	6,971	4,796	1,877
Continued	34,901	33,665	21,647	13,254
Continued Claims for the Week of the 12th				
Continued	14,461	15,400	8,160	6,301

Texas Unemployment Insurance Claims Filed

	Aug-09	Jul-09	Aug-08	OTY
Initial	98,444	112,737	68,139	30,305
Continued	1,404,113	1,340,360	543,681	860,432
Continued Claims for the Week of the 12th				
Continued	295,488	313,137	125,839	169,649

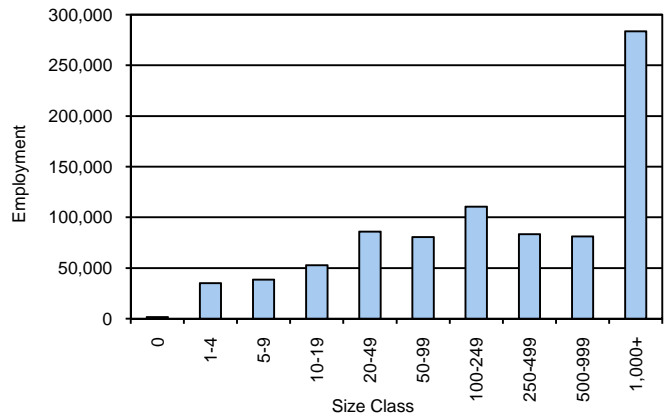
Alamo WDA Average Weekly Wage

	Alamo	WDA Qtr. Chg.	Texas
1st Quarter 2009	\$750.35	-\$34.70	\$884.74
4th Quarter 2008	\$785.05	WDA OTY Chg.	\$932.81
1st Quarter 2008	\$758.70	-\$8.35	\$903.44

NAICS Covered Employment Quarterly Data 1st Quarter 2009

SUPER SECTOR	Employment	Change	
		Quarter	Year
Construction	51,559	-3,552	-3,462
Education & Health Services	119,211	-215	5,567
Federal	31,645	67	685
Financial Activities	65,606	-1,594	-399
Information	20,859	-230	-1,139
Leisure & Hospitality	102,131	-697	2,847
Local	109,237	-739	1,574
Manufacturing	45,664	-1,878	-3,993
Natural Resources & Mining	6,546	-434	-132
Nonclassified	345	190	157
Other Services	25,509	-354	-142
Professional & Business Services	104,331	-3,387	-6,225
State	20,533	259	900
Trade, Transportation & Utilities	149,755	-7,882	-5,443
TOTAL	852,931	-20,446	-9,205

Size Class Employment Composition 1st Quarter 2009



*Counties in WDA: Atacosa, Bandera, Bexar, Comal, Frio, Gillespie, Guadalupe, Karnes, Kendall, Kerr, Medina, & Wilson

Available at <http://www.tracer2.com/>