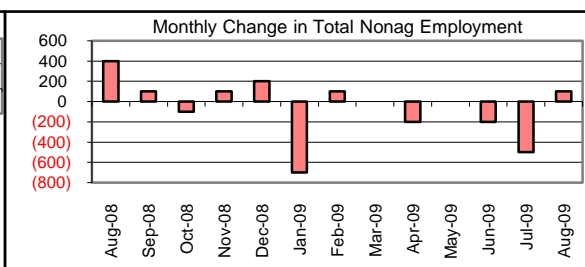
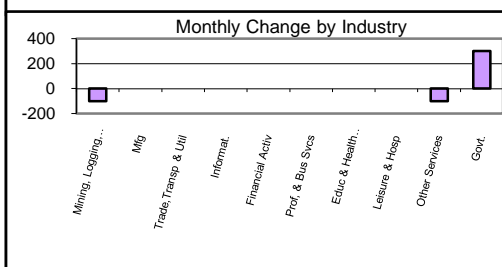
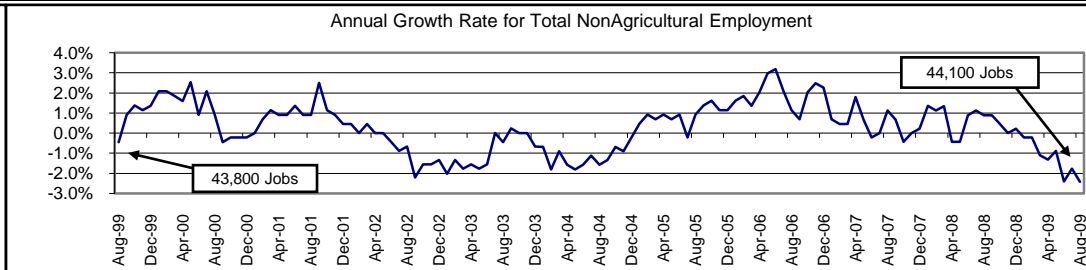
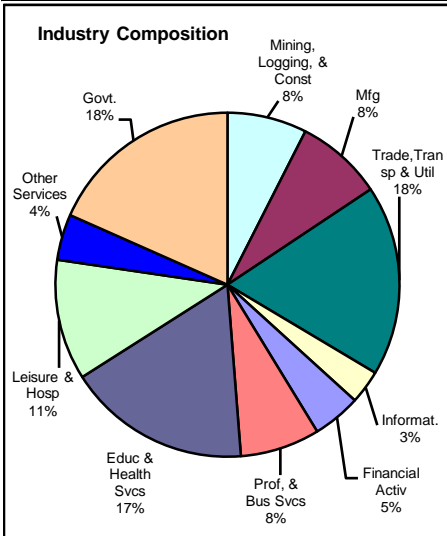


San Angelo MSA

(Irlon, Tom Green)

August-2009

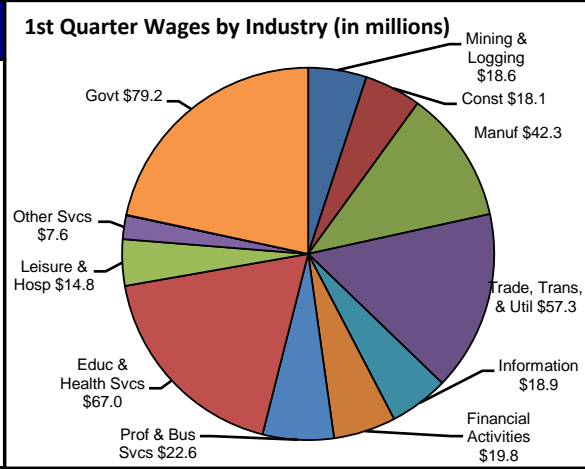


| Industry | Employment | | | Monthly Change | | Annual Change | |
|-----------------------------|------------|----------|----------|----------------|-------|---------------|--------|
| | Aug-2009 | Jul-2009 | Aug-2008 | Actual | % | Actual | % |
| Total Nonagricultural | 44,100 | 44,000 | 45,200 | 100 | 0.2% | -1,100 | -2.4% |
| Mining, Logging, & Const | 3,300 | 3,400 | 3,600 | -100 | -2.9% | -300 | -8.3% |
| Manufacturing | 3,600 | 3,600 | 3,800 | 0 | 0.0% | -200 | -5.3% |
| Trade, Transp., & Utilities | 7,900 | 7,900 | 8,100 | 0 | 0.0% | -200 | -2.5% |
| Information | 1,400 | 1,400 | 1,600 | 0 | 0.0% | -200 | -12.5% |
| Financial Activities | 2,000 | 2,000 | 2,100 | 0 | 0.0% | -100 | -4.8% |
| Profes., & Business Svcs | 3,300 | 3,300 | 3,500 | 0 | 0.0% | -200 | -5.7% |
| Education & Health Svcs | 7,600 | 7,600 | 7,500 | 0 | 0.0% | 100 | 1.3% |
| Leisure & Hospitality | 5,000 | 5,000 | 4,800 | 0 | 0.0% | 200 | 4.2% |
| Other Services | 1,900 | 2,000 | 1,900 | -100 | -5.0% | 0 | 0.0% |
| Government | 8,100 | 7,800 | 8,300 | 300 | 3.9% | -200 | -2.4% |

| Size Class | Employees Per Firm | Number of Firms | Employment in Size Class | % of Total Employment |
|--------------|--------------------|-----------------|--------------------------|-----------------------|
| 9 | 1000+ | 3 | 4927 | 10.9% |
| 8 | 500-999 | 10 | 7623 | 16.9% |
| 7 | 250-499 | 11 | 3704 | 8.2% |
| 6 | 100-249 | 42 | 5894 | 13.1% |
| 5 | 50-99 | 79 | 5515 | 12.3% |
| 4 | 20-49 | 245 | 7611 | 16.9% |
| 3 | 10-19 | 317 | 4247 | 9.4% |
| 2 | 5-9 | 465 | 3056 | 6.8% |
| 1 | 1-4 | 1181 | 2436 | 5.4% |
| 0 | 0 | 166 | 0 | 0.0% |
| TOTAL | | 2519 | 45013 | 100.0% |

Comments for August 2009

The San Angelo MSA added 100 jobs in Total Nonagricultural Employment over the month. This increase was half the five-year average increase and the first over-the-month increase since February 2009. Employment decreased -2.4 percent over the year. The Mining, Logging, and Construction industry lost 100 jobs over the month. This was the second over-the-month decrease in 2009 and the fourth such decrease in the past twenty-four months. Since the beginning of the year, the industry lost 200 jobs. Local Government employment increased 7.0 percent over the month. The seasonal increase was three times the five-year average increase for the area and was due to area school districts increasing staff for the new school year.



| Month | San Angelo MSA | | | | Texas (Actual) | | | | United States (Actual) | | | |
|--------|----------------|------|--------|--------|----------------|----------|--------|--------|------------------------|-----------|----------|--------|
| | C.L.F. | Emp. | Unemp. | % Rate | C.L.F. | Emp. | Unemp. | % Rate | C.L.F. | Emp. | Unemp. | % Rate |
| Aug-09 | 53.9 | 50.3 | 3.6 | 6.7 | 12,061.4 | 11,079.4 | 982.0 | 8.1 | 154,897.0 | 140,074.0 | 14,823.0 | 9.6 |
| Jul-09 | 54.0 | 50.3 | 3.7 | 6.8 | 12,136.6 | 11,138.2 | 998.4 | 8.2 | 156,255.0 | 141,055.0 | 15,201.0 | 9.7 |
| Aug-08 | 53.0 | 50.6 | 2.4 | 4.5 | 11,750.7 | 11,129.8 | 620.9 | 5.3 | 155,387.0 | 145,909.0 | 9,479.0 | 6.1 |