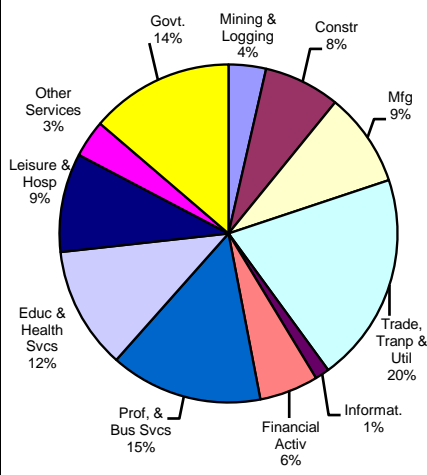


Houston-Sugar Land-Baytown MSA

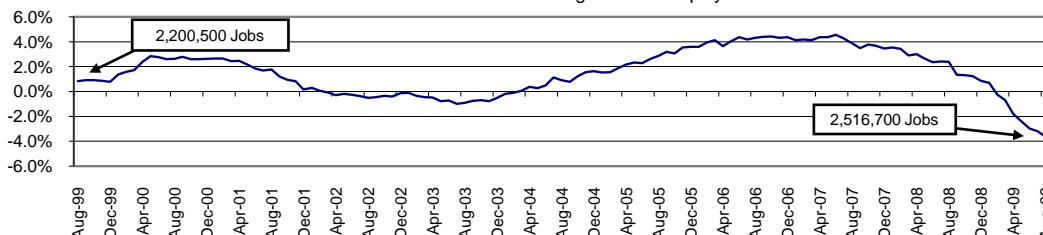
(Austin, Brazoria, Chambers, Fort Bend, Galveston, Harris, Liberty, Montgomery, San Jacinto, Waller)

August-2009

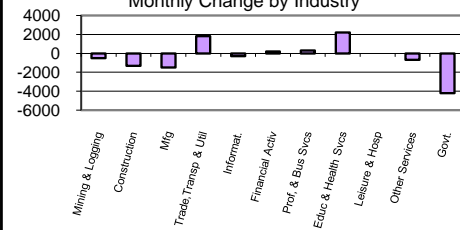
Industry Composition



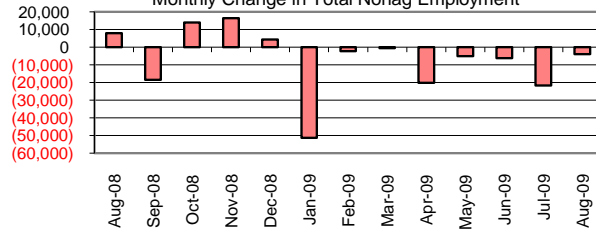
Annual Growth Rate for Total NonAgricultural Employment



Monthly Change by Industry



Monthly Change in Total Nonag Employment



Employment by Industry

	Monthly Change			Annual Change	
	Aug-2009	Jul-2009	Aug-2008	Actual	%
Total Nonagricultural	2,516,700	2,520,700	2,611,800	-4,000	-0.2%
Mining & Logging	90,100	90,600	92,000	-500	-0.6%
Construction	183,400	184,700	205,000	-1,300	-0.7%
Manufacturing	227,000	228,500	243,000	-1,500	-0.7%
Trade, Transp., & Utilities	505,200	503,400	537,700	1,800	0.4%
Information	34,600	34,900	36,500	-300	-0.9%
Financial Activities	141,900	141,700	144,500	200	0.1%
Profes., & Business Svcs	366,900	366,600	386,500	300	0.1%
Education & Health Svcs	294,300	292,100	289,700	2,200	0.8%
Leisure & Hospitality	237,900	237,900	238,000	0	0.0%
Other Services	89,800	90,500	93,500	-700	-0.8%
Government	345,600	349,800	345,400	-4,200	-1.2%

Size Class of Industries

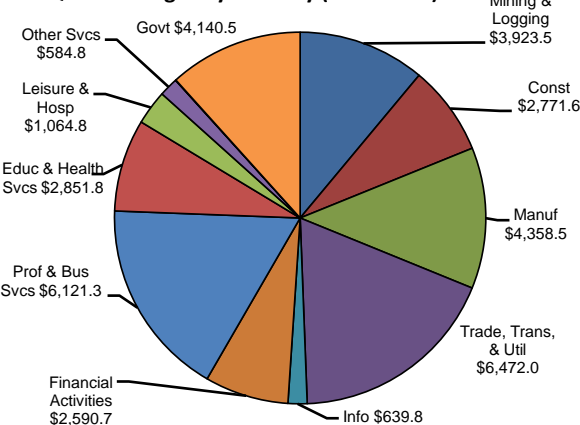
as of March 2009

Size Class	Employees Per Firm	Number of Firms	Employment in Size Class	% of Total Employment
9	1000+	283	905115	35.9%
8	500-999	352	247911	9.8%
7	250-499	685	240512	9.5%
6	100-249	2056	315644	12.5%
5	50-99	3130	217060	8.6%
4	20-49	7777	239176	9.5%
3	10-19	10823	145975	5.8%
2	5-9	16755	110049	4.4%
1	1-4	51371	102093	4.0%
0	0	11205	0	0.0%
TOTAL		104437	2523535	100.0%

Comments for August 2009

Total Nonagricultural Employment in the Houston-Sugar Land-Baytown MSA lost 4,000 jobs in August and 95,100 jobs over the year. The Nondurable Goods Manufacturing industry fell by -0.7 percent in the month of August, almost half of the -1.3 percent drop witnessed in August 2008. Annually, the loss was -2.1 percent. The Durable Goods Manufacturing industry, with its first August decline since 2003, lost -0.6 percent of its employment. Annually, the loss was -8.9 percent. The Finance and Insurance industry suffered an annual loss of 2,200 jobs for a drop of -2.4 percent, despite a marginal gain for the month. With the stores gearing up for "back to school" and the "tax-free weekend" shopping rush, employment in Retail Trade rose by 400 jobs in August. Department Stores, the major contributor, added 700 jobs. The annual growth rate for Department Stores was 3.5 percent, representing 800 jobs. Professional and Business Services added 300 jobs in Architectural, Engineering, and Related Services over the month, the second consecutive month of positive growth. Employment Services gained 200 jobs in August and added 2,600 jobs so far this year.

1st Quarter Wages by Industry (in millions)



Unemployment Information (all estimates are in thousands)

	Houston-Sugar Land-Baytown MSA Texas (Actual)				United States (Actual)			
	C.L.F.	Emp.	Unemp.	% Rate	C.L.F.	Emp.	Unemp.	% Rate
Aug-09	2,834.1	2,597.2	236.9	8.4	12,061.4	11,079.4	982.0	8.1
Jul-09	2,855.4	2,616.1	239.3	8.4	12,136.6	11,138.2	998.4	8.2
Aug-08	2,801.7	2,657.2	144.5	5.2	11,750.7	11,129.8	620.9	5.3