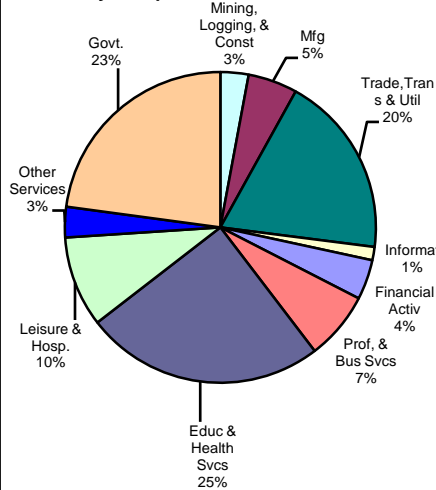


Brownsville-Harlingen MSA

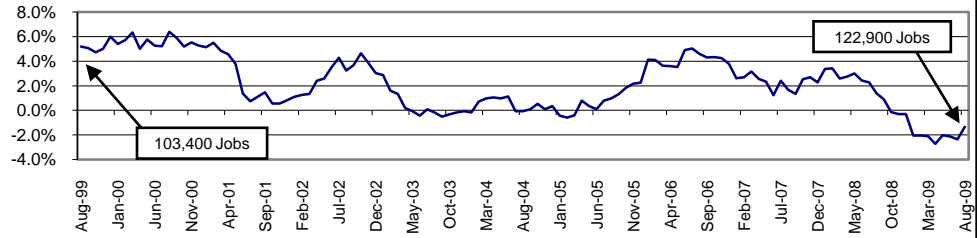
(Cameron)

August-2009

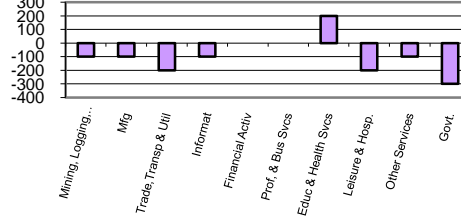
Industry Composition



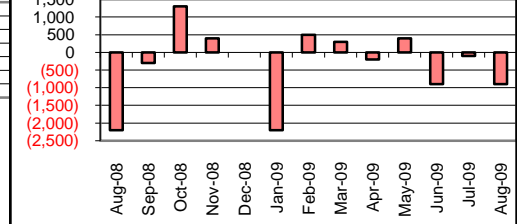
Annual Growth Rate for Total NonAgricultural Employment



Monthly Change by Industry



Monthly Change in Total Nonag Employment



Employment by Industry

	Employment			Monthly Change		Annual Change	
	Aug-2009	Jul-2009	Aug-2008	Actual	%	Actual	%
Total Nonagricultural	122,900	123,800	124,600	-900	-0.7%	-1,700	-1.4%
Mining, Logging, & Const	3,600	3,700	4,100	-100	-2.7%	-500	-12.2%
Manufacturing	6,300	6,400	7,300	-100	-1.6%	-1,000	-13.7%
Trade, Transp., & Utilities	23,300	23,500	24,400	-200	-0.9%	-1,100	-4.5%
Information	1,700	1,800	1,800	-100	-5.6%	-100	-5.6%
Financial Activities	5,100	5,100	5,100	0	0.0%	0	0.0%
Profes., & Business Svcs	8,700	8,700	8,900	0	0.0%	-200	-2.3%
Education & Health Svcs	30,600	30,400	29,800	200	0.7%	800	2.7%
Leisure & Hospitality	11,600	11,800	12,200	-200	-1.7%	-600	-4.9%
Other Services	3,900	4,000	4,100	-100	-2.5%	-200	-4.9%
Government	28,100	28,400	26,900	-300	-1.1%	1,200	4.5%

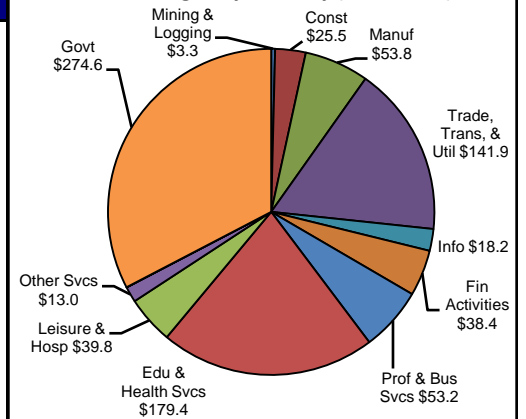
Size Class of Industries as of March 2009

Size Class	Employees Per Firm	Number of Firms	Employment in Size Class	% of Total Employment
9	1000+	16	34804	28.4%
8	500-999	16	10496	8.6%
7	250-499	32	11322	9.3%
6	100-249	126	19011	15.5%
5	50-99	153	10660	8.7%
4	20-49	502	15094	12.3%
3	10-19	677	9151	7.5%
2	5-9	1008	6701	5.5%
1	1-4	2429	5133	4.2%
0	0	436	0	0.0%
TOTAL		5395	122372	100.0%

Comments for August 2009

Total Nonagricultural Employment in the Brownsville-Harlingen MSA shrank by 900 jobs in August. Job losses were widespread across a variety of industries. Mining, Logging and Construction, Manufacturing, Information, and Other Services each declined by 100 jobs. Leisure and Hospitality shed 200 positions, while Government declined by 300 jobs. Education and Health Services grew by 200 positions and was the only industry to grow in August. Education and Health Services added 800 positions over the year for a 2.7 percent annual growth rate. Government employment had the strongest gains over the year, adding 1,200 jobs for a 4.5 percent growth rate. Including the August data, the Brownsville-Harlingen MSA contracted by 1,700 jobs over the past year, representing an annual growth rate of -1.4 percent.

1st Quarter Wages by Industry (in millions)



Unemployment Information (all estimates are in thousands)

	Brownsville MSA				Texas (Actual)				United States (Actual)			
	C.L.F.	Emp.	Unemp.	% Rate	C.L.F.	Emp.	Unemp.	% Rate	C.L.F.	Emp.	Unemp.	% Rate
Aug-2009	150.7	134.8	15.9	10.5	12,061.4	11,079.4	982.0	8.1	154,897.0	140,074.0	14,823.0	9.6
Jul-2009	152.0	135.9	16.1	10.6	12,136.6	11,138.2	998.4	8.2	156,255.0	141,055.0	15,201.0	9.7
Aug-2008	145.5	134.4	11.1	7.6	11,750.7	11,129.8	620.9	5.3	155,387.0	145,909.0	9,479.0	6.1