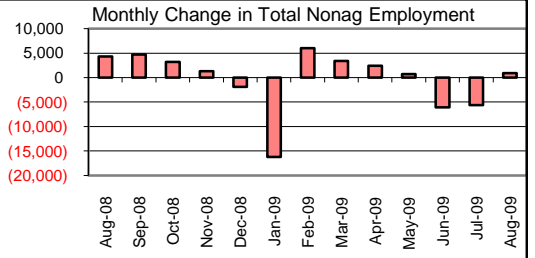
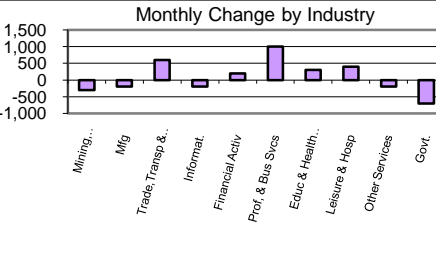
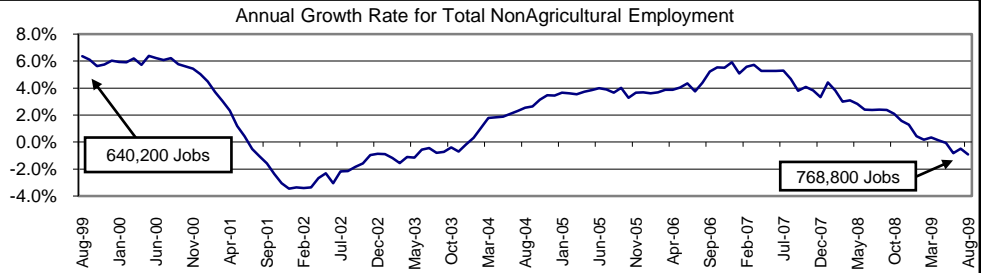
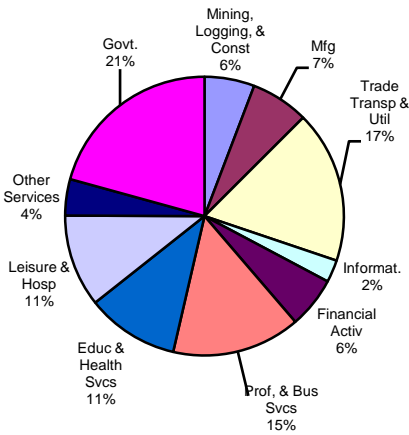


### Industry Composition



### Employment by Industry

	Employment			Monthly Change		Annual Change	
	Aug-2009	Jul-2009	Aug-2008	Actual	%	Actual	%
Total Nonagricultural	768,800	767,900	776,000	900	0.1%	-7,200	-0.9%
Mining, Logging, & Const	44,600	44,900	48,100	-300	-0.7%	-3,500	-7.3%
Manufacturing	51,600	51,800	58,300	-200	-0.4%	-6,700	-11.5%
Trade, Transp., & Utilities	135,800	135,200	139,500	600	0.4%	-3,700	-2.7%
Information	19,900	20,100	21,100	-200	-1.0%	-1,200	-5.7%
Financial Activities	45,700	45,500	45,000	200	0.4%	700	1.6%
Profes., & Business Svcs	114,600	113,600	113,300	1,000	0.9%	1,300	1.2%
Education & Health Svcs	82,500	82,200	80,300	300	0.4%	2,200	2.7%
Leisure & Hospitality	82,400	82,000	81,600	400	0.5%	800	1.0%
Other Services	32,400	32,600	31,400	-200	-0.6%	1,000	3.2%
Government	159,300	160,000	157,400	-700	-0.4%	1,900	1.2%

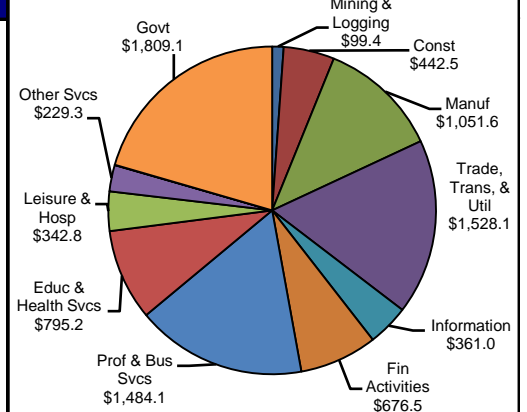
### Size Class of Industries as of March 2009

Size Class	Employees Per Firm	Number of Firms	Employment in Size Class	% of Total Employment
9	1000+	72	230825	30.9%
8	500-999	97	66242	8.9%
7	250-499	209	69736	9.3%
6	100-249	682	103784	13.9%
5	50-99	1093	75948	10.2%
4	20-49	2769	83430	11.2%
3	10-19	3660	49532	6.6%
2	5-9	5430	35794	4.8%
1	1-4	16536	32606	4.4%
0	0	3938	0	0.0%
<b>TOTAL</b>		<b>34486</b>	<b>747897</b>	<b>100.0%</b>

### Comments for August 2009

Total Nonagricultural Employment in the Austin-Round Rock MSA grew by 900 jobs in August. The majority of the increase occurred in Professional and Business Services, which rose by 1,000 jobs. Retail Trade employment increased by 600 jobs in August. This followed normal seasonal patterns, as stores prepared for "tax-free days" and "back to school" shopping during August. Education and Health Services employment increased by 300 jobs in August. Leisure and Hospitality employment grew by 400 jobs in August. This industry gained 800 jobs or 1.0 percent since August 2008. The annual growth rate for Austin-Round Rock MSA was -0.9 percent in August, for a loss of 7,200 positions since August 2008.

### 1st Quarter Wages by Industry (in millions)



### Unemployment Information (all estimates are in thousands)

	Austin-Round Rock MSA				Texas (Actual)				United States (Actual)			
	C.L.F.	Emp.	Unemp.	% Rate	C.L.F.	Emp.	Unemp.	% Rate	C.L.F.	Emp.	Unemp.	% Rate
Aug-2009	896.4	831.5	64.9	7.2	12,061.4	11,079.4	982.0	8.1	154,897.0	140,074.0	14,823.0	9.6
Jul-2009	900.9	834.9	66.0	7.3	12,136.6	11,138.2	998.4	8.2	156,255.0	141,055.0	15,201.0	9.7
Aug-2008	869.5	828.3	41.2	4.7	11,750.7	11,129.8	620.9	5.3	155,387.0	145,909.0	9,479.0	6.1