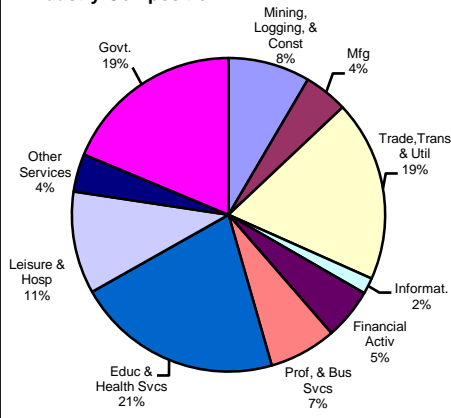
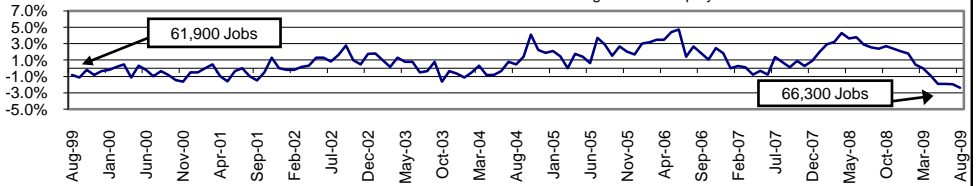


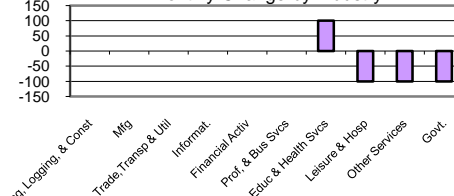
Industry Composition



Annual Growth Rate for Total NonAgricultural Employment



Monthly Change by Industry



Monthly Change in Total Nonag Employment



Employment by Industry

	Employment			Monthly Change		Annual Change	
	Aug-2009	Jul-2009	Aug-2008	Actual	%	Actual	%
Total Nonagricultural	66,300	66,500	67,900	-200	-0.3%	-1,600	-2.4%
Mining, Logging, & Const	5,600	5,600	6,100	0	0.0%	-500	-8.2%
Manufacturing	3,000	3,000	3,300	0	0.0%	-300	-9.1%
Trade, Transp., & Utilities	12,400	12,400	13,000	0	0.0%	-600	-4.6%
Information	1,100	1,100	1,200	0	0.0%	-100	-8.3%
Financial Activities	3,500	3,500	3,700	0	0.0%	-200	-5.4%
Profes., & Business Svcs	4,600	4,600	4,900	0	0.0%	-300	-6.1%
Education & Health Svcs	14,100	14,000	13,800	100	0.7%	300	2.2%
Leisure & Hospitality	7,000	7,100	6,900	-100	-1.4%	100	1.5%
Other Services	2,600	2,700	2,700	-100	-3.7%	-100	-3.7%
Government	12,400	12,500	12,300	-100	-0.8%	100	0.8%

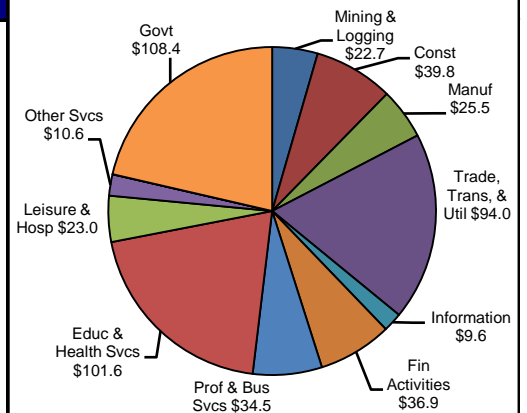
Size Class of Industries as of March 2009

Size Class	Employees Per Firm	Number of Firms	Employment in Size Class	% of Total Employment
9	1000+	7	11160	17.6%
8	500-999	6	3860	6.1%
7	250-499	17	5588	8.8%
6	100-249	76	11119	17.5%
5	50-99	124	8600	13.5%
4	20-49	327	10004	15.7%
3	10-19	426	5863	9.2%
2	5-9	607	4000	6.3%
1	1-4	1578	3387	5.3%
0	0	262	0	0.0%
TOTAL		3430	63581	100.0%

Comments for August 2009

Total Nonagricultural Employment in the Abilene MSA decreased by 200 jobs in August. Since August 2008, the MSA lost 1,600 jobs or -2.4 percent. The employment loss was primarily caused by Leisure and Hospitality and Local Government, with decreases of 100 jobs each. Other Services had a small over-the-month loss. The only industry with an over-the-month gain was Education and Health Services with 100 positions added. Since August 2008, Education and Health Services gained 300 jobs, for an annual growth rate of 2.2 percent.

1st Quarter Wages by Industry (in millions)



Unemployment Information (all estimates are in thousands)

	Abilene MSA				Texas (Actual)				United States (Actual)			
	C.L.F.	Emp.	Unemp.	% Rate	C.L.F.	Emp.	Unemp.	% Rate	C.L.F.	Emp.	Unemp.	% Rate
Aug-2009	83.8	78.7	5.1	6.1	12,061.4	11,079.4	982.0	8.1	154,897.0	140,074.0	14,823.0	9.6
Jul-2009	84.6	79.2	5.4	6.3	12,136.6	11,138.2	998.4	8.2	156,255.0	141,055.0	15,201.0	9.7
Aug-2008	82.6	79.1	3.5	4.2	11,750.7	11,129.8	620.9	5.3	155,387.0	145,909.0	9,479.0	6.1