

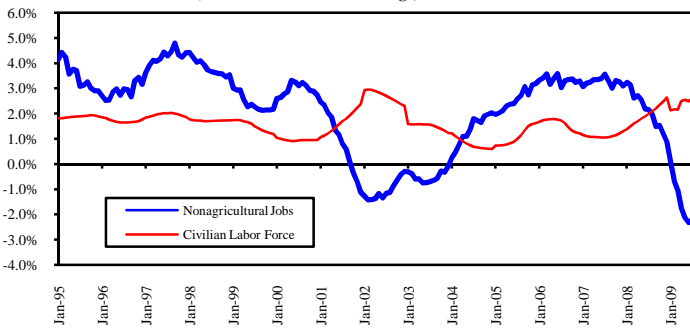
Texas Nonagricultural Employment Summary

Total Nonagricultural Employment was 10,344,300 in August, down 62,200 jobs from the July estimate. This loss was a continuation of decreases that started in November 2008 and followed a revised job gain in July of 27,600 jobs. Most of the 11 major industries shed employment over the month. The Education and Health Services industry bucked the trend and gained 5,200 jobs in August. This gain was on top of a 8,600-job increase in July for this major industry. From year-ago levels, Total Nonagricultural Employment dropped 296,300 jobs, a -2.8 percent decline.

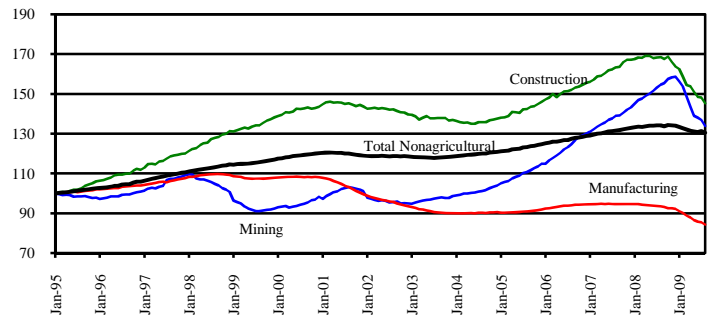
Texas Labor Force Summary

The Texas unemployment rate was 8.0 percent for August 2009. This was one-tenth of a percentage point higher than the July estimate and was three percentage points above the year-ago level of 5.0 percent. The United States unemployment rate was 9.7 percent for August 2009. Since last August, the Texas Civilian Labor Force increased 290,900 individuals with 85,400 less employed Texans and 376,300 more unemployed. The Texas Civilian Labor Force expanded 2.5 percent since August 2008 while the Total Nonagricultural Employment declined -2.8 percent over the same time period.

Total Nonagricultural Jobs vs. Civilian Labor Force (Over-the-Year Percent Change)



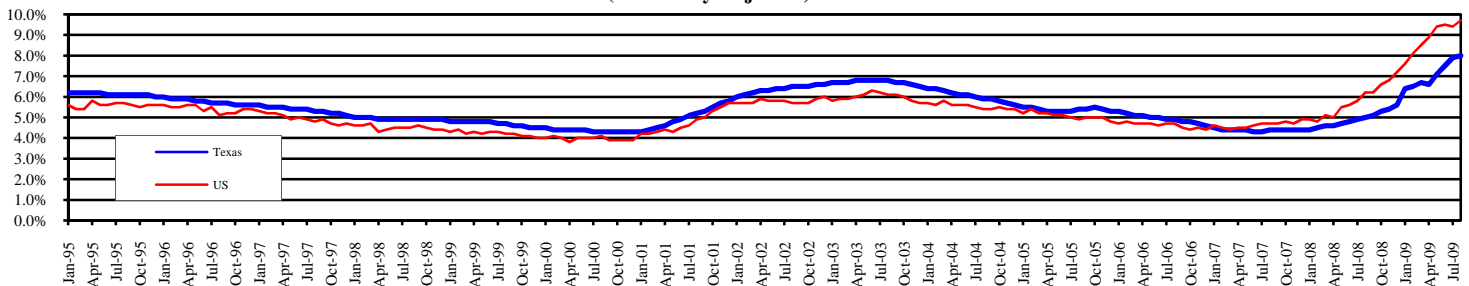
Goods Producing Sector Index, 1995=100



TEXAS NONAGRICULTURAL WAGE AND SALARY EMPLOYMENT SEASONALLY ADJUSTED

INDUSTRY TITLE	Aug. 2009	Jul. 2009	Aug. 2008	Jul. '09 to Aug. '09		Aug. '08 to Aug. '09	
				Absolute Change	Percent Change	Absolute Change	Percent Change
TOTAL NONAG. W&S EMPLOYMENT	10,344,300	10,406,500	10,640,600	-62,200	-0.6	-296,300	-2.8
GOODS PRODUCING							
Mining & Logging	202,700	207,400	234,100	-4,700	-2.3	-31,400	-13.4
Construction	581,700	593,400	674,000	-11,700	-2.0	-92,300	-13.7
Manufacturing	832,700	843,600	922,900	-10,900	-1.3	-90,200	-9.8
SERVICE PROVIDING							
Trade, Transportation, & Utilities	2,045,600	2,046,300	2,152,100	-700	0.0	-106,500	-4.9
Information	201,100	203,000	216,100	-1,900	-0.9	-15,000	-6.9
Financial Activities	646,900	646,300	647,700	600	0.1	-800	-0.1
Professional & Business Services	1,278,400	1,287,200	1,341,800	-8,800	-0.7	-63,400	-4.7
Education & Health Services	1,358,800	1,353,600	1,300,200	5,200	0.4	58,600	4.5
Leisure & Hospitality	1,010,600	1,023,500	1,006,300	-12,900	-1.3	4,300	0.4
Other Services	361,600	366,900	363,300	-5,300	-1.4	-1,700	-0.5
Government	1,824,200	1,835,300	1,782,100	-11,100	-0.6	42,100	2.4

Texas and U.S. Unemployment Rates (Seasonally Adjusted)



TEXAS AND U.S. CIVILIAN LABOR FORCE ESTIMATES (Seasonally Adjusted)

	TEXAS				UNITED STATES				
	CLF	EMP	UNEMP	RATE	CLF	EMP	UNEMP	RATE	
Aug. '09	12,025,700	11,059,700	966,000	8.0	Aug. '09	154,577,000	139,649,000	14,928,000	9.7
Jul. '09	12,017,900	11,068,900	949,000	7.9	Jul. '09	154,504,000	140,041,000	14,462,000	9.4
Aug. '08	11,734,800	11,145,100	589,700	5.0	Aug. '08	154,823,000	145,273,000	9,550,000	6.2