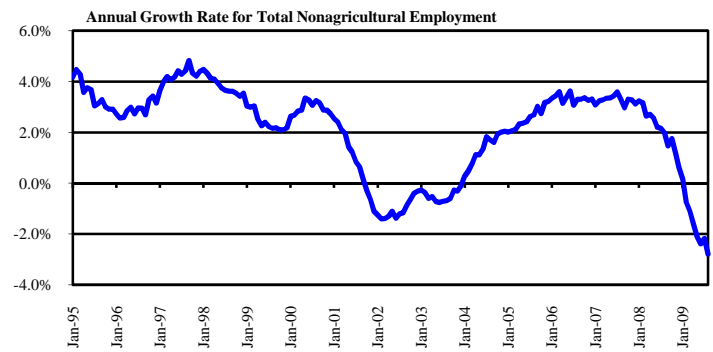
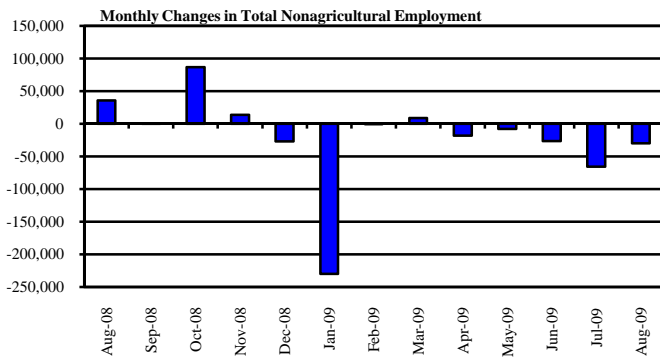


Nonagricultural Employment

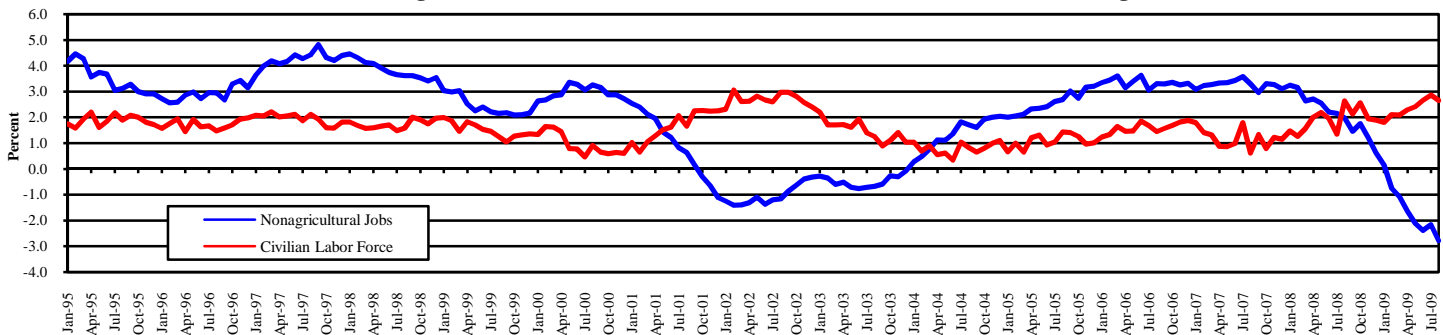


Employment by Industry	Aug-09	Jul-09	Aug-08	Monthly		Annual	
				Change	%	Change	%
Total Nonagricultural	10,316,300	10,346,400	10,611,700	-30,100	-0.3%	-295,400	-2.8%
Mining & Logging	203,800	208,000	235,700	-4,200	-2.0%	-31,900	-13.5%
Construction	590,200	601,200	679,300	-11,000	-1.8%	-89,100	-13.1%
Manufacturing	836,200	844,400	926,800	-8,200	-1.0%	-90,600	-9.8%
Trade, Transportation, & Utilities	2,051,900	2,045,300	2,157,600	6,600	0.3%	-105,700	-4.9%
Information	201,700	204,200	216,900	-2,500	-1.2%	-15,200	-7.0%
Financial Activities	649,600	649,200	651,500	400	0.1%	-1,900	-0.3%
Professional & Business Services	1,289,000	1,296,300	1,351,200	-7,300	-0.6%	-62,200	-4.6%
Education & Health Services	1,354,500	1,344,400	1,302,400	10,100	0.8%	52,100	4.0%
Leisure & Hospitality	1,028,600	1,043,500	1,027,600	-14,900	-1.4%	1,000	0.1%
Other Services	363,900	370,600	365,400	-6,700	-1.8%	-1,500	-0.4%
Government	1,746,900	1,739,300	1,697,300	7,600	0.4%	49,600	2.9%

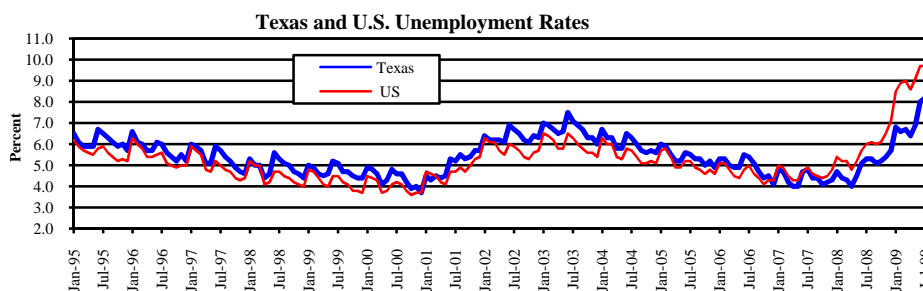
**Nonagricultural Summary**  
 The Texas labor market experienced a loss of 30,100 Total Nonagricultural jobs from July to August. Leisure & Hospitality led the industry losses with a drop of 14,900 jobs. Three of 10 private industries showed gains over the month, with Education & Health Services leading with 10,100 jobs. Trade, Transportation, & Utilities grew by 6,600 positions, while Financial Activities showed a monthly gain of 400 jobs.

Texas Nonagricultural Employment dropped 295,400 jobs since last August for an overall annual growth rate of -2.8 percent.

Texas Total Nonagricultural Jobs vs. Civilian Labor Force (Over-the-Year Percent Change)



Civilian Labor Force and Unemployment Statistics



	Labor Force	Employment	Unemploy.	Rate
Aug-08	11,750,700	11,129,800	620,900	5.3
Mar-09	11,820,100	11,027,900	791,800	6.7
Apr-09	11,873,400	11,118,900	754,500	6.4
May-09	11,919,900	11,098,200	821,700	6.9
Jun-09	12,075,200	11,110,300	964,600	8.0
Jul-09	12,136,600	11,138,200	998,400	8.2
Aug-09	12,061,400	11,079,400	982,000	8.1

	Labor Force	Employment	Unemploy.	Rate
Aug-08	155,387,000	145,909,000	9,479,000	6.1
Mar-09	153,728,000	139,833,000	13,895,000	9.0
Apr-09	153,834,000	140,586,000	13,248,000	8.6
May-09	154,336,000	140,363,000	13,973,000	9.1
Jun-09	155,921,000	140,826,000	15,095,000	9.7
Jul-09	156,255,000	141,055,000	15,201,000	9.7
Aug-09	154,897,000	140,074,000	14,823,000	9.6

Labor Force Summary

The Texas unemployment rate moved down from 8.2 percent in July to 8.1 percent in August. The rate usually moved down two-tenths of a percentage point from July to August during the last ten years. The August 2009 rate was 2.8 percent higher than the 5.3 percent unemployment rate in August 2008. The Texas rate has been at or below the U.S. rate the past 33 months. Nationally, the August jobless rate was 9.6 percent, down from the July rate of 9.7 percent. The U.S. rate moved up 3.5 percent since August 2008.