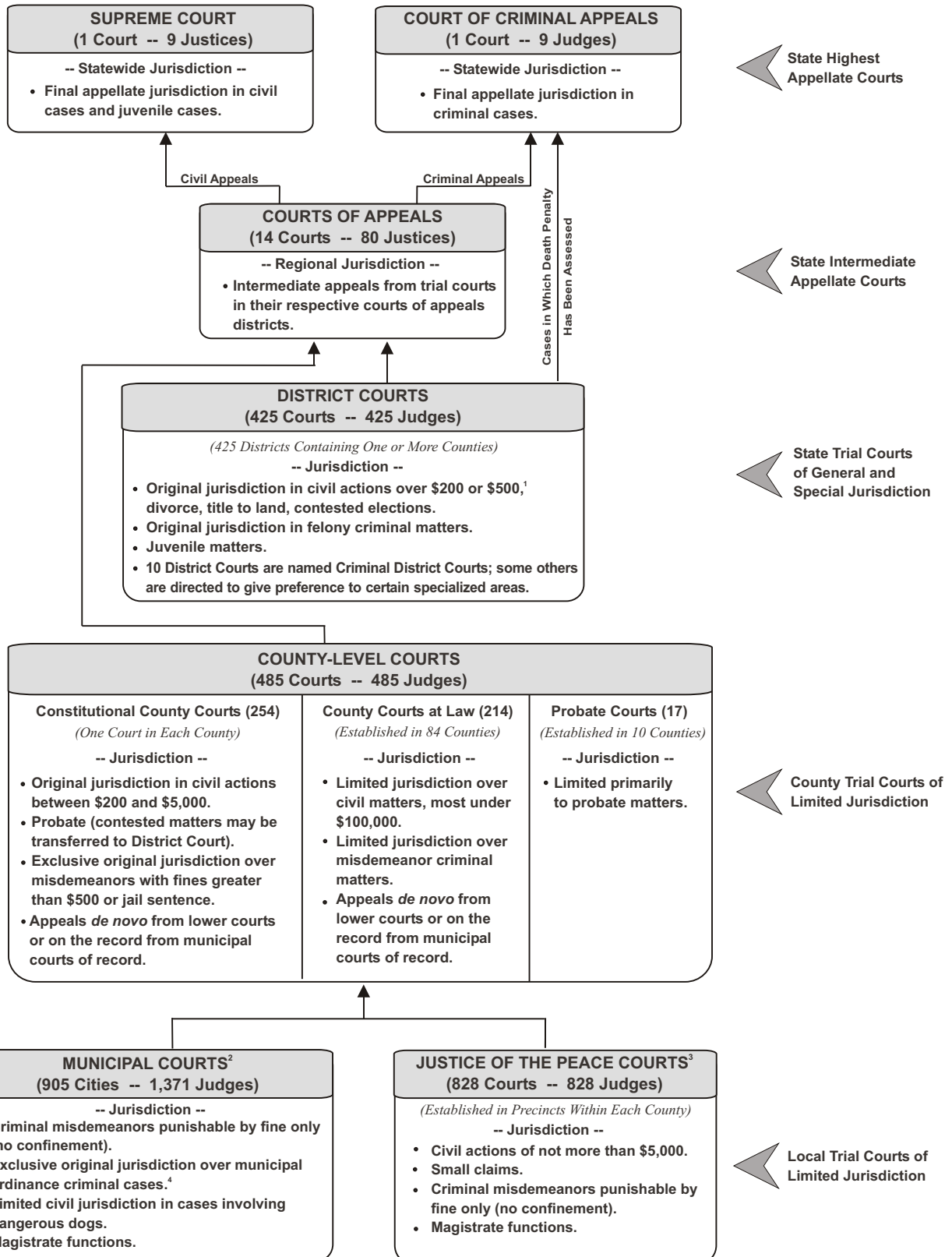


# COURT STRUCTURE OF TEXAS

MARCH 1, 2005



<sup>1</sup> The dollar amount is currently unclear.

<sup>2</sup> Some Municipal Courts are courts of record -- appeals from those courts are taken on the record to the county-level courts.

<sup>3</sup> All Justice of the Peace Courts and most Municipal Courts are not courts of record. Appeals from these courts are by trial *de novo* in the county-level courts, and in some instances in the district courts.

<sup>4</sup> An offense that arises under a municipal ordinance is punishable by a fine not to exceed: (1) \$2000 for ordinances that govern fire safety, zoning, and public health or (2) \$500 for all others.