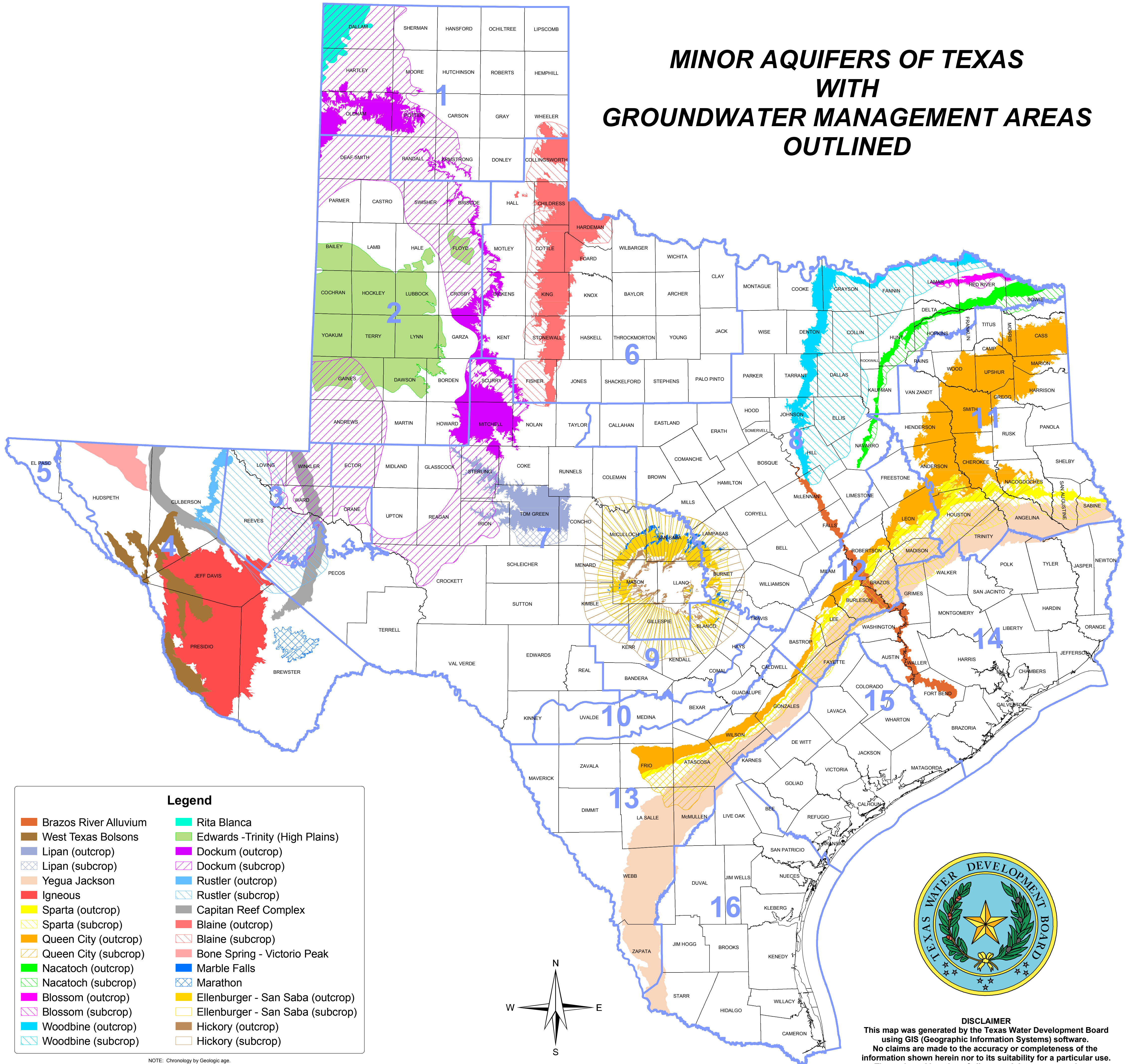


MINOR AQUIFERS OF TEXAS WITH GROUNDWATER MANAGEMENT AREAS OUTLINED

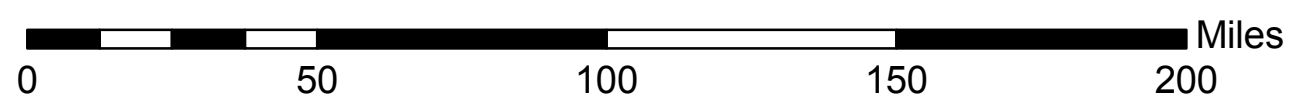
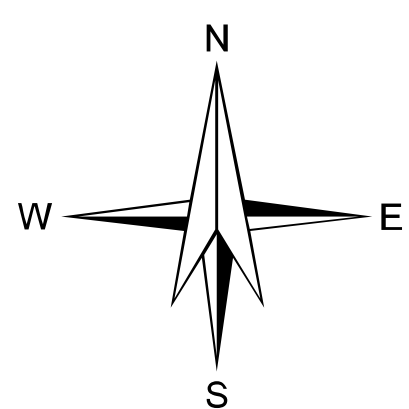


Legend

■ Brazos River Alluvium	■ Rita Blanca
■ West Texas Bolsons	■ Edwards -Trinity (High Plains)
■ Lipan (outcrop)	■ Dockum (outcrop)
▨ Lipan (subcrop)	▨ Dockum (subcrop)
■ Yegua Jackson	■ Rustler (outcrop)
■ Igneous	▨ Rustler (subcrop)
■ Sparta (outcrop)	■ Capitan Reef Complex
▨ Sparta (subcrop)	■ Blaine (outcrop)
■ Queen City (outcrop)	▨ Blaine (subcrop)
▨ Queen City (subcrop)	■ Bone Spring - Victorio Peak
■ Nacatoch (outcrop)	■ Marble Falls
▨ Nacatoch (subcrop)	▨ Marathon
■ Blossom (outcrop)	■ Ellenburger - San Saba (outcrop)
▨ Blossom (subcrop)	▨ Ellenburger - San Saba (subcrop)
■ Woodbine (outcrop)	■ Hickory (outcrop)
▨ Woodbine (subcrop)	▨ Hickory (subcrop)

NOTE: Chronology by Geologic age.

OUTCROP (portion of a water-bearing rock unit exposed at the land surface)
SUBCROP (portion of a water-bearing rock unit existing below other rock units)



DISCLAIMER
This map was generated by the Texas Water Development Board using GIS (Geographic Information Systems) software. No claims are made to the accuracy or completeness of the information shown herein nor to its suitability for a particular use. The scale and location of all mapped data are approximate.

Map updated August 2007 by Mark Hayes, GISP