

Appendices

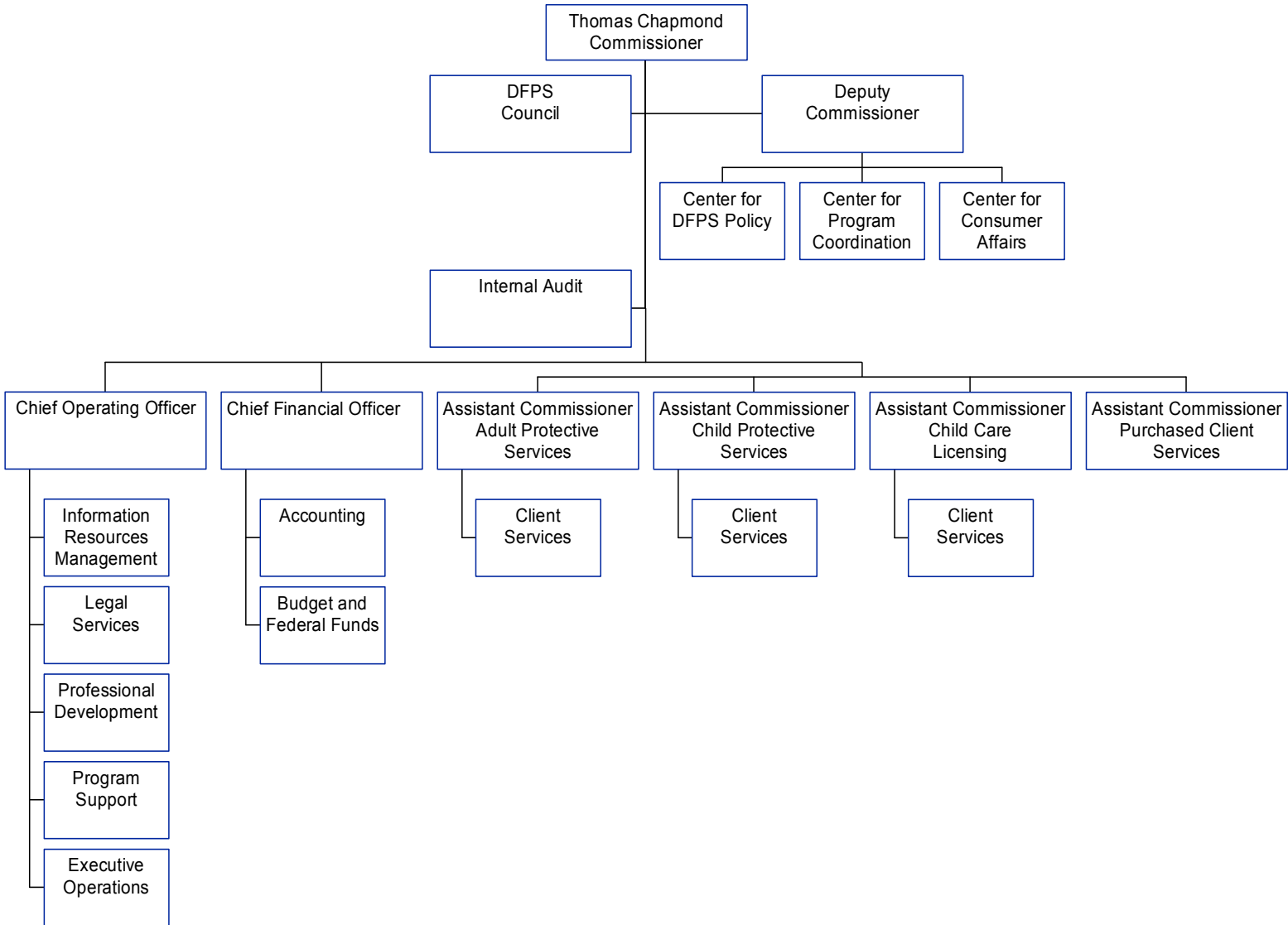


Albert Hawkins, Executive Commissioner



Appendix A – Department of Family Protective Services

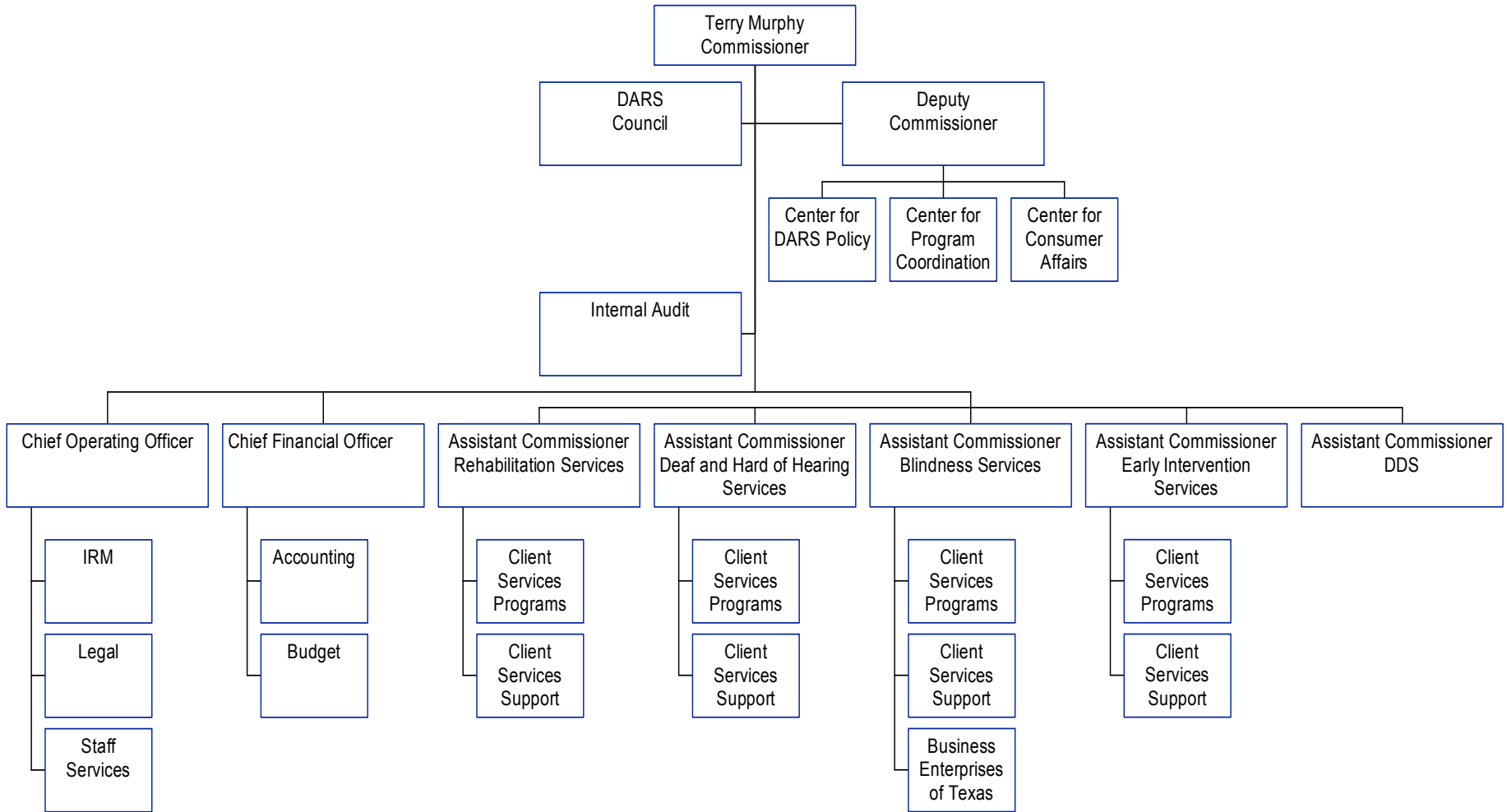
Organizational Chart – as of February 1, 2004





Appendix B – Department of Assistive and Rehabilitative Services

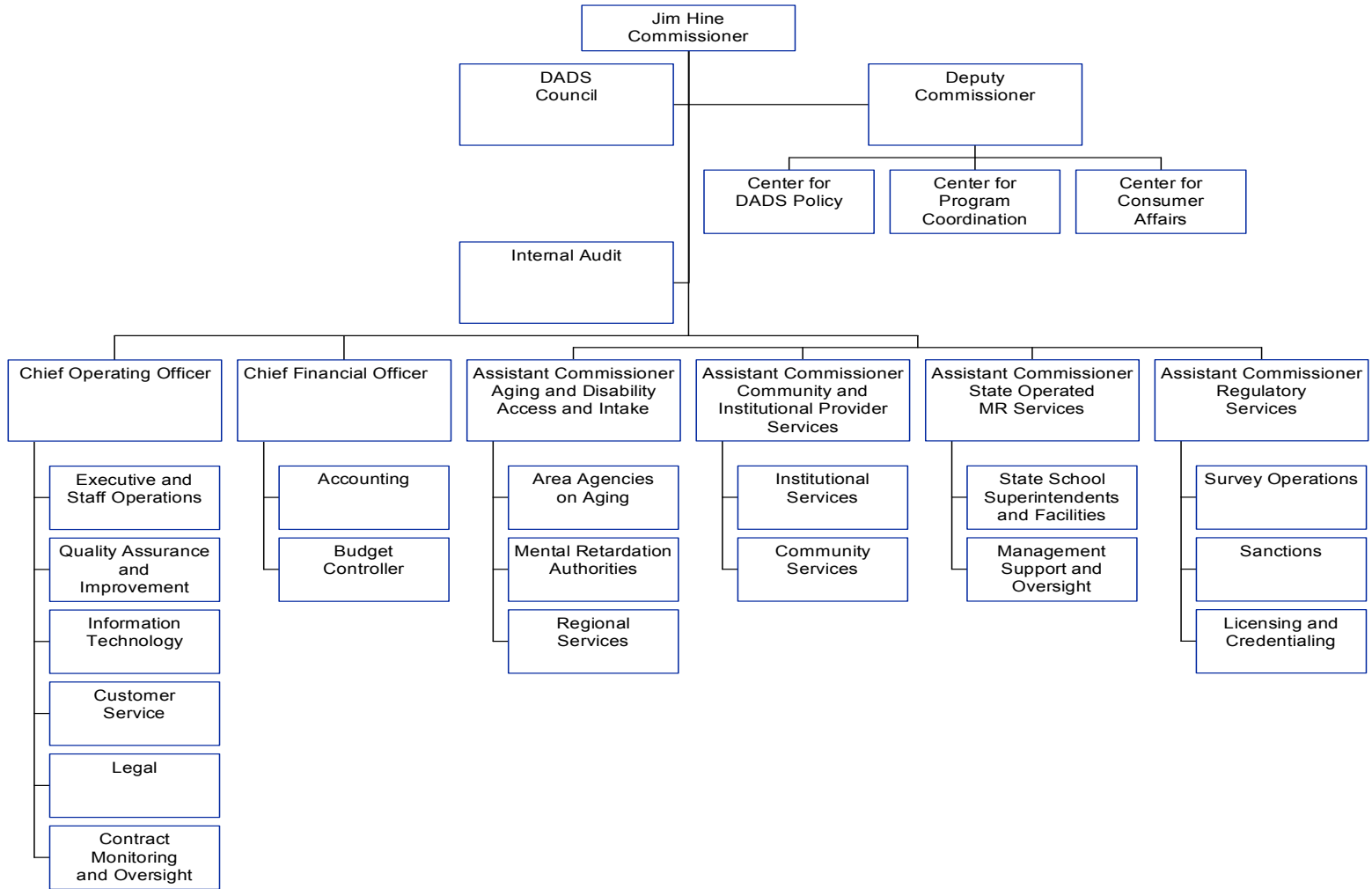
DEPARTMENT OF ASSISTIVE AND REHABILITATIVE SERVICES PROPOSED ORGANIZATIONAL CHART





Appendix C (a) – Department of Aging and Disability Services

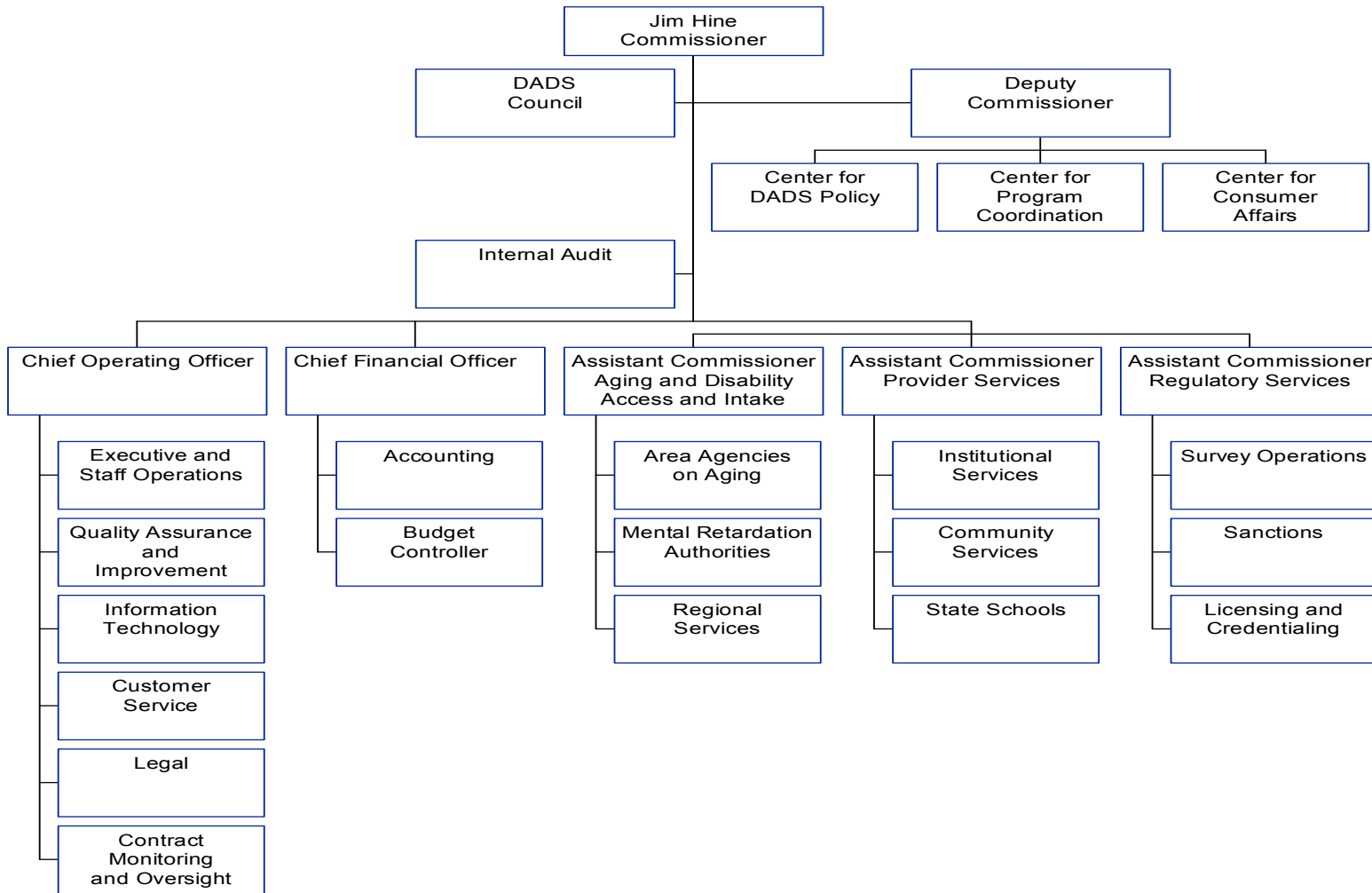
DEPARTMENT OF AGING AND DISABILITY SERVICES PROPOSED ORGANIZATIONAL CHART (MODEL A)





Appendix C (b) – Department of Aging and Disability Services

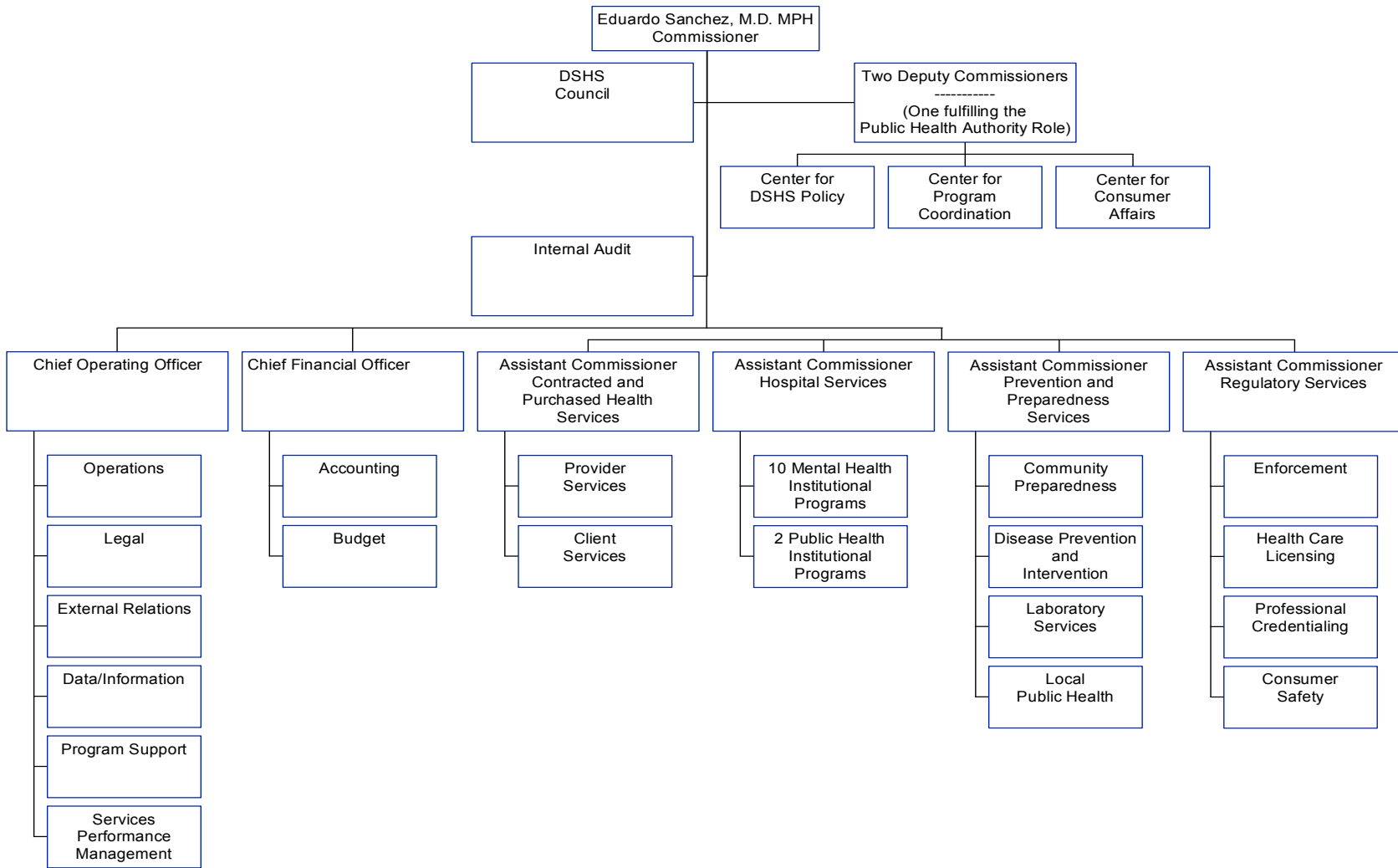
DEPARTMENT OF AGING AND DISABILITY SERVICES PROPOSED ORGANIZATIONAL CHART (MODEL B)





Appendix D (a) – Department of State Health Services

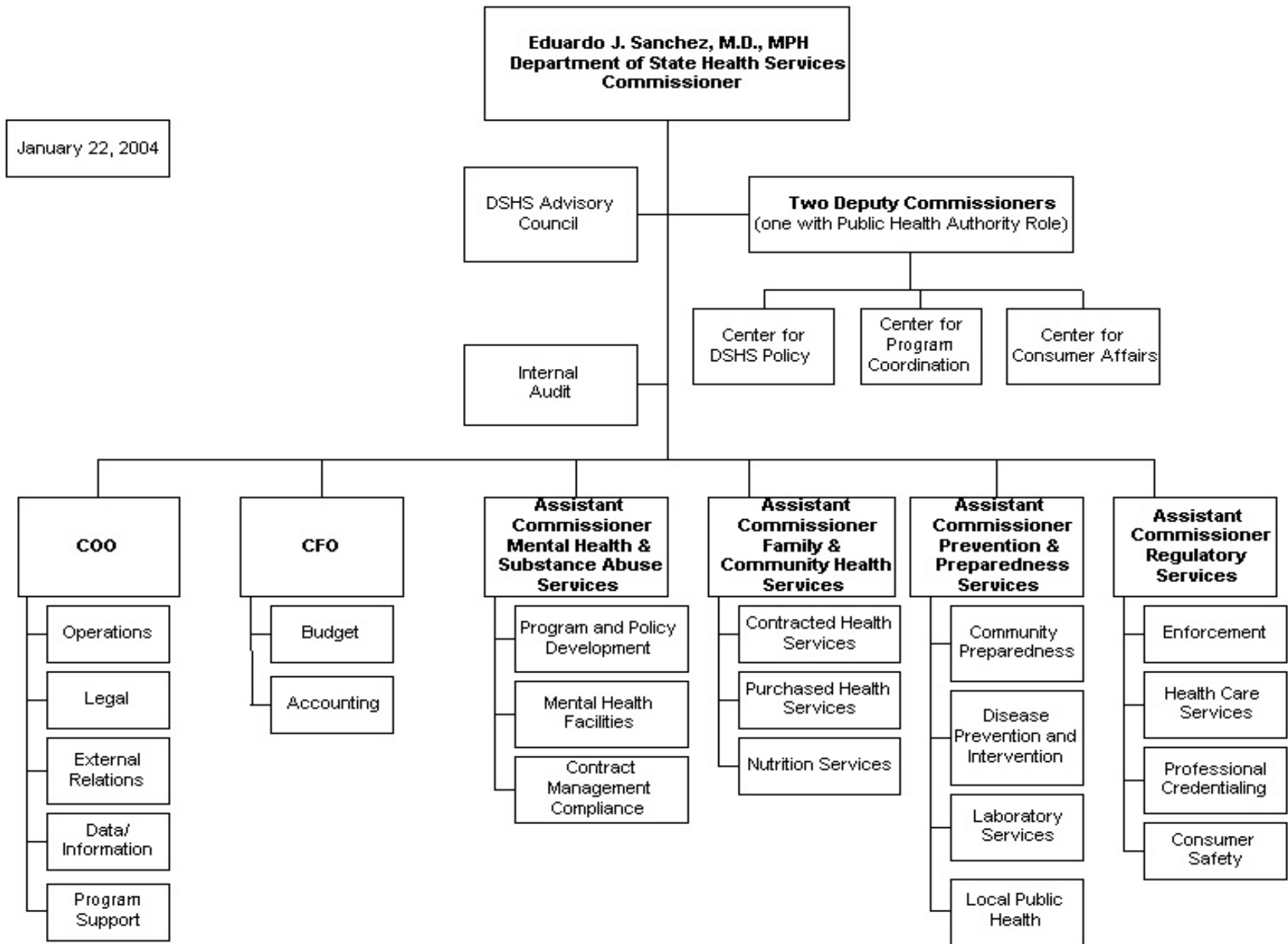
DEPARTMENT OF STATE HEALTH SERVICES PROPOSED ORGANIZATIONAL CHART





Appendix D (b) – Department of State Health Services

Department of State Health Services Proposed Organizational Structure – Model B





Appendix E – Federal Poverty Level

Selected HHS-Relevant Percent of Poverty Income Levels for 2003

1. Based on Annual Income

Family Size	17%	24%	50%	74%	100%	133%	150%	185%	200%	220%
1	1,527	2,155	4,490	6,645	8,980	11,943	13,470	16,613	17,960	19,756
2	2,060	2,909	6,060	8,969	12,120	16,120	18,180	22,422	24,240	26,664
3	2,594	3,662	7,630	11,292	15,260	20,296	22,890	28,231	30,520	33,572
4	3,128	4,416	9,200	13,616	18,400	24,472	27,600	34,040	36,800	40,480
5	3,662	5,170	10,770	15,940	21,540	28,648	32,310	39,849	43,080	47,388
6	4,196	5,923	12,340	18,263	24,680	32,824	37,020	45,658	49,360	54,296
7	4,729	6,677	13,910	20,587	27,820	37,001	41,730	51,467	55,640	61,204
8	5,263	7,430	15,480	22,910	30,960	41,177	46,440	57,276	61,920	68,112

At 100% of poverty, for families larger than 8, add \$ 3,140 for each additional person.

2. Based on Monthly Income

Family Size	17%	24%	50%	74%	100%	133%	150%	185%	200%	220%
1	127	180	374	554	748	995	1,123	1,384	1,497	1,646
2	172	242	505	747	1,010	1,343	1,515	1,869	2,020	2,222
3	216	305	636	941	1,272	1,691	1,908	2,353	2,543	2,798
4	261	368	767	1,135	1,533	2,039	2,300	2,837	3,067	3,373
5	305	431	898	1,328	1,795	2,387	2,693	3,321	3,590	3,949
6	350	494	1,028	1,522	2,057	2,735	3,085	3,805	4,113	4,525
7	394	556	1,159	1,716	2,318	3,083	3,478	4,289	4,637	5,100
8	439	619	1,290	1,909	2,580	3,431	3,870	4,773	5,160	5,676

At 100% of poverty, for families larger than 8, add \$ 262 for each additional person.

Source for Guidelines: U.S. Department of Human Services.

Federal Register, Vol. 68, No. 26, February 7, 2003, pp. 6456-6458.