



TEXAS ENGINEERING EXTENSION SERVICE



PUBLIC SAFETY & SECURITY COURSE CATALOG

Contents

Law Enforcement	4
Basic Criminal Investigation	4
Basic Instructor Development	4
Basic Special Weapons and Tactics (SWAT)	4
Child Abuse Recognition and Investigation	5
Crime Scene Search & Investigation	5
Defensive Tactics Instructor	5
Emergency Vehicle Operations Instructor	5
Field Training Officer	6
Firearms Instructor	6
First Line Supervisor	6
Ground Avoidance Ground Escape (GAGE) Instructor	6
Patrol Rifle Instructor	7
Patrol Rifle Operator	7
Personal Defense Spray Instructor	7
Radar Instructor Course	7
Reality-Based Training Instructor	8
Sexual Harassment and Rape Prevention (SHARP)	8
Spanish for Emergency Responders	8
Spontaneous Knife Defense Instructor	9
Tactical Response Team Close-Quarter Countermeasures Instructor	9
Traffic Accident Avoidance	9

Central Texas Police Academy	10
---	----

Forensic Science Academy	11
---	----

Corrections	12
Inmate Rights and Privileges	12
Suicide Detection and Prevention in Jails	12
Use of Force in a Jail Setting	13
Interpersonal Communications in the Correctional Setting	13

Collision Investigation & Reconstruction	14
Intermediate Collision Investigation	14
Advanced Collision Investigation	14
Collision Reconstruction	15
Pedestrian Collision Investigation	15

Explosives and Ordnance Training	16
Unexploded Ordnance Technician Level I	16
Explosive Breacher Entry	16
Ordnance Recognition and Improvised Explosive Device Awareness	17
HAZWOPER for Cleanup Operations Training	17



Public Safety & Security

Industrial Security	18
Business Continuity Planning	18
Effective Supervision in Health Care	18
Field Training Officer	18
First Line Security Supervisor	18
Managing Security Operations	19
Sexual Harassment and Rape Prevention (SHARP)	19
Vulnerability Assessment: Strategy, Design and Mitigation	19
Basic Criminal Investigation	20
Basic Special Weapons and Tactics (SWAT) Training	20
Crime Scene Search & Investigation	20
Drug Impairment and Behavior Recognition	20
Explosive Breacher Entry	21
Security Dispatch Operator	21
Spanish for Emergency Responders	21
Traffic Accident Avoidance	21
Basic Instructor Development	22
Defensive Tactics Instructor	22
Emergency Vehicle Operations Instructor	22
Firearms Instructor	22
Ground Avoidance Ground Escape (GAGE) Instructor	23
Personal Defense Spray Instructor	23
Spontaneous Knife Defense Instructor	23
Tactical Response Team Close Quarter Countermeasures Instructor	23
Vulnerability Assessment: Strategy, Design and Mitigation Train-the-Trainer	23
Critical Infrastructure / Key Resource Assessments	24
Threat & Risk Assessment	24
Enhanced Threat & Risk Assessment	24
School Safety (Project Protect)	25
Drug Impairment and Behavior Recognition for Education Professionals (DIBREP)	26
Disruptive Student Management (DSM)	26
Advanced Law Enforcement Rapid Response Training (ALERRT)	26
Emergency Aftermath Recovery	26
Tabletop Exercise/Analysis	26
Emergency Operations Plan Technical Assistance (EOPTA)	27
Emergency Operations Planning Tool for Schools	27
Emergency Operations Planning Workshops	27
Incident Command System (ICS)	27
Vulnerability Assessment: Strategy, Design and Mitigation (VASDM)	27
Training Facilities	28
TEEX Overview	29

LET800 — Basic Criminal Investigation

40 Hours

The Basic Criminal Investigator (BCI) course prepares participants for their transition from a traditional patrol/traffic function to an investigative position such as Detective. The BCI course is also appropriate for those agencies that require officers to perform both patrol and investigative functions once calls for service are received. The course prepares officers to manage a wide variety of common criminal investigations from a response to the initial scene to case preparation and presentation for prosecution. Emphasis is placed on managing the legal processes involved in investigations including: preparation of affidavits, procurement and execution of search and arrest warrants, interview and interrogation procedures, as well as rules governing the collection and preservation of evidence. Additionally, participants will learn case preparation techniques and unique aspects of special topic investigations such as narcotics, property crimes, and crimes against persons.

Topics

- Basic principles of criminal investigation
- Interviewing and interrogation techniques
- Utilizing informants
- Crime scene investigation
- Subpoenas, warrants and search warrants
- Case preparation
- Narcotics investigations
- Property crime investigations
- Crimes against persons investigations
- Other types of investigation

Audience

Law Enforcement, Security, Private Investigators.



LET565 — Basic Instructor Development

40 Hours

This course is a hands-on, professional development experience for the new trainer/instructor. Participants will learn modern methods for effectively training adults and techniques for creating an effective learning environment.

Topics

- Teaching adults
- Understanding factors that affect learning
- Improving methods for effective instruction
- Understanding processes of teaching/learning
- Writing learning objectives
- Using instructional aids/media
- Designing lesson plans and course documentation
- Enhancing presentation skills and public speaking

Audience

Participants should be commissioned Texas peace officers, licensed security officers, Emergency Medical Technicians, or public safety trainers.



LET555 — Basic Special Weapons and Tactics (SWAT)

60 Hours

Basic Special Weapons and Tactics (SWAT) is a course designed to provide participants with a solid understanding of basic SWAT concepts and operations. Basic SWAT gives the new SWAT officer an opportunity to learn basic tactical operations theory and develop a level of proficiency in common SWAT operations.

Topics

- History of SWAT
- Building entry and searches
- Selection and physical evaluation of team members
- Tactical deployment and field skills
- Dynamic entry techniques
- Use of distraction devices and chemical agents

Audience

Law enforcement, security or military personnel assigned to a tactical team or special response unit.



LET450 — Child Abuse Recognition and Investigation

24 Hours

This course teaches investigation techniques for child abuse and neglect cases.

Topics

- Nature, causes and effects of child abuse
- Statutory authority and responsibilities
- Categories of child abuse and neglect
- Family dynamics and components of child abuse
- Guidelines for investigation
- Common characteristics of child abusers

Audience

Public safety personnel involved in the investigation of child abuse.

LET810 — Crime Scene Search & Investigation

32 Hours

The Crime Scene Search & Investigation provides the participant with hands-on techniques and procedures that will enable law enforcement personnel to collect and better evaluate crime scene evidence. Proper evidence documentation methods, sketching and photography are included as course objectives.

Topics

- Interviewing techniques
- Crime scene investigation and profiling
- Preparation of search and arrest warrant affidavits
- Sources of information
- Management of case information

Audience

Peace officers, security officers, and personnel assigned to investigate crime scenes.

LET650 — Defensive Tactics Instructor

40 Hours

The PPCT Defensive Tactics Instructor course is the first subject control system developed through tactical, legal, and medical research. Tactically, the system addresses the most common types of resistance that law enforcement personnel encounter, ensuring that participants learn job-related techniques pertaining to self defense. The course teaches a simple use of force continuum which clarifies the appropriate force level for every level of resistance. Medical research has been conducted on each technique to refine efficiency and to ensure that medical implications are proportional to the level of resistance.

Topics

- Survival learning research
- Control principles
- Tactical handcuffing
- Pressure point control tactics
- Joint locks
- Defensive counterstrikes
- Impact weapon system
- Instructor development and training protocols

Audience

Participants should be commissioned peace officers, licensed security officers or public safety trainers. Physical participation is required. Participants should be in good physical condition.



LET515 — Emergency Vehicle Operations Instructor

50 Hours

This five-day instructor course is designed to train experienced instructors to deliver the Emergency Vehicle Operations Course (EVOC). This class is a realistic, high-stress, driving program that offers the participant 40 hours of actual driving time.

Topics

- Civil and criminal liabilities
- Highway response driving
- Mechanics of driver control
- Night driving
- Off-road recovery
- Driving exercises
- Vehicle dynamics

Audience

Participants should be experienced drivers capable of operating a motor vehicle under stressful conditions and have experience as an instructor.



LET580 — Field Training Officer

24 Hours

The FTO course provides participants with the tools necessary to become an effective field training officer. This tried and true program, as well as other FTO models, will be used to describe the qualities needed to become a successful field training officer. Any agency desiring to restructure a field training program or build a new program will find this 24-hour course immensely beneficial.

Topics

- FTO responsibilities and duties
- Program construction
- FTO program liabilities
- Forms and documentation
- Evaluation of trainees and termination procedures
- Remedial training and teaching techniques

Audience

Public safety personnel who use any form of field training program to train and/or evaluate the progress of newly hired employees.

LET575 — Firearms Instructor

40 Hours

Participants will identify and correct student weaknesses, analyze and score targets, design and run courses of fire, and properly document police firearms training. Upon completion of this course, participants will be able to develop and implement comprehensive firearms training programs.

Topics

- Identifying and correcting shooter problems
- Applying firearms safety and liability issues
- Teaching the fundamentals of shooting
- Designing courses of fire
- Understanding firing range operations and firearms instructor duties

Audience

Participants should be commissioned peace officers or security personnel.



LET585 — First Line Supervisor

24 Hours

This course is mandatory for newly promoted supervisors and must be completed within the first 24 months of promotion. Participants will receive training vital to effective leadership, including ethics, effective communication, leadership styles, counseling, planning and organizing, and cultural diversity.

Topics

- Making the transition from line officer to supervisor
- Identifying common threads in leadership, management and supervision
- Using leadership, counseling, motivation and communication skills effectively
- Understanding values, ethics, and fundamental principles of leadership and supervision
- Understanding the supervisor's role as it relates to the overall goals of the agency
- Using a systematic approach to identify and solve problems
- Understanding administrative tasks such as budgeting, scheduling, planning, and staffing
- Applying work performance measures and employee evaluations
- Applying liability and civil rights issues for supervisors
- Understanding the benefits of working with citizens and addressing citizen's complaints

Special investigative issues also introduced:

- Child abuse
- Family violence
- Sexual assault
- Use of force

Audience

The participant should be a supervisor in a public safety or law enforcement agency or anticipate promotion to a supervisor position in the near future. The course is also beneficial for those who are responsible for the day-to-day supervision of law enforcement or similar personnel.



LET635 — Ground Avoidance Ground Escape (GAGE) Instructor

24 Hours

This PPCT Ground Avoidance Ground Escape Instructor course is designed to teach students how to avoid being taken to the ground and how to effectively escape if they do find themselves there. It reviews tactics for both open and narrow environments, reviews the four most common ground positions and escapes, refines the student's physical technique, and presents instructional methods for teaching survival skills.

Topics

- Use of force human factors
- Instructor development and training protocols
- Control principles
- Shoulder pin restraint
- Ground avoidance and ground escape

Audience

Participants should be commissioned peace officers, licensed security officers or public safety trainers. Physical participation is required. Participant should be in good physical condition.



LET576 — Patrol Rifle Instructor

40.00 Hours

The Patrol Rifle Instructor course is designed for firearms instructors who have the responsibility of instructing patrol officers in the safe and proper procedures for deploying patrol rifles. Course design and safety issues are taught as well as principles of marksmanship, rifle nomenclature and operation. The course emphasizes teaching weapons manipulation and training personnel to fight with a rifle at what are traditionally considered handgun ranges. The course is based on the AR-15/M-4/M-16 weapons platform. However, other systems will be discussed.

Topics

- Firearms safety
- Principles of marksmanship
- Rifle nomenclature, care and maintenance
- Rifle manipulation
- Sight adjustment, zeroing procedures, course design and implementation

Audience

Participants should be commissioned peace officers or security personnel.



LET578 — Patrol Rifle Operator

24 Hours

The Patrol Rifle Operator course is designed for officers who are being issued patrol rifles. The course emphasizes weapons manipulation and training to fight with a rifle at what are traditionally considered handgun ranges. The course is based on the AR-15/M-4/M-16 weapons platform. However, other systems will be discussed.

Topics

- Firearms safety
- Principles of marksmanship
- Rifle nomenclature, care and maintenance
- Rifle manipulation
- Sight adjustment, zeroing procedures

Audience

Participants should be commissioned peace officers or security personnel.

LET700 — Personal Defense Spray Instructor

16 Hours

The Personal Defense Spray Instructor class is designed to promote safe and effective use of law enforcement chemical defense sprays. The participant will learn when defense sprays are appropriate, tactics and techniques of application, and proper means of handling and decontamination of those exposed. Additionally, the participant will be aware of the probable medical implications associated with the use of defense sprays.

Topics

- History of law enforcement chemical weapons
- Composition of modern defense sprays
- Physiological effects of defense sprays
- Delivery systems
- Use of force issues
- Tactics of application
- Control tactics follow-up procedures
- Decontamination procedures
- Defense spray selection
- Practical exercises

Audience

Law enforcement officers, detention officers, and security personnel authorized to carry defense sprays.

Other Information

Exposure to chemical defense spray during class is mandatory.



LET570 — Radar Instructor Course

40 Hours

Participants will receive instructor level training for the proper facilitation of the National Highway Traffic Safety Administration (NHTSA) Doppler RADAR course. A lesson plan, electronic slide presentation, and student manual are provided to each participant for use during and after this course.

Topics

- Basic adult learning and teaching principles
- A review of the NHTSA RADAR curriculum
- Effective preparation and presentation skills
- How to conduct a basic Doppler RADAR course

Audience

Participants should be commissioned peace officers.



LET705 — Reality-Based Training Instructor

40 Hours

The Reality-Based Training Instructor course is designed to teach students how to safely design and implement scenario-based training in their agency. Students are led through the development process and the building of a scenario training plan. Students will leave this course with several training scenarios that they will be able to take back to their agencies to utilize immediately.

Topics

- Introduction to reality-based training
- Safety issues for reality-based training
- The scenario development process
- How to choose and prepare the training site
- How to safely execute the scenario
- How to evaluate the training

Audience

Participants should be commissioned peace officers, licensed security officers or public safety trainers.



LET620 — Sexual Harassment and Rape Prevention (SHARP)

8 Hours

The PPCT SHARP course is specifically designed to meet the needs of women when control methods and assault prevention are required. Principles and strategies for effectively reducing the likelihood of assault through both confrontation avoidance and actual techniques of countering an attack are stressed in this program. Because the techniques taught utilize efficient and effective methods of subject control that do not rely on size and strength, SHARP is a training system that can be used by anyone who is interested in personal safety.

Topics

- Survival learning research
- Prevention psychology
- Managing social or professional physical harassment
- Sexual assault countermeasures

Audience

Anyone who is interested in personal safety.



SER430 — Spanish for Emergency Responders

24 Hours

Spanish for Emergency Responders is designed to develop fundamental Spanish speaking and listening skills pertaining to emergency situations. The unique aspects of this course are the discipline-specific scenarios and joint activities designed to approximate realistic conditions in areas specific to Fire, Emergency Medical Services (EMS), and Law Enforcement. Proficiency is gained through the positive effects of repetition and review. Throughout the 24-hour course, participants gain a deeper understanding of the Hispanic culture. Participants receive functional materials designed to assist, reinforce, and continue study of the Spanish language. Through increased language capabilities and communication techniques, injuries may be prevented and lives can be saved.

Topics

- Arrest commands
- Emergencies
- Traffic incidents
- Basic questions
- Gender and race

Audience

The participant should be employed by one of the three emergency responder disciplines listed.

LET645 — Spontaneous Knife Defense Instructor

24 Hours

The PPCT SKD course focuses on the principles, methods and strategies needed to teach a person of any size or strength how to effectively defend against a spontaneous edged-weapon attack. This instructor course prepares students to instruct the PPCT Spontaneous Knife Defense course, refines the student's physical technique, and presents instructional methods for teaching survival skills.

Topics

- Survival learning research
- Control principles
- Psychology of combat knife systems
- Offensive knife attack strategies
- Target lethality
- Spontaneous knife defense system

Audience

Law enforcement officers, security guards/agents or corrections officers.



LET665 — Tactical Response Team Close-Quarter Countermeasures Instructor

40 Hours

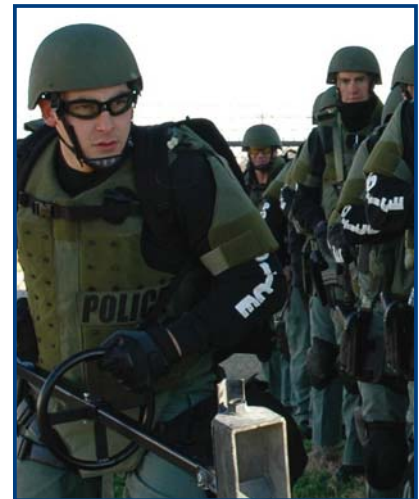
The PPCT Tactical Response Team Close-Quarter Countermeasures (CQC) course is designed to provide tactical team operators with non-lethal force options. The course prepares operators to use a simple and systematic CQC system designed for apprehending subjects during dynamic entries, hostage rescue or to control a surrendering subject. This instructor course prepares students to instruct the PPCT Tactical Team Close-Quarter-Countermeasures basic course, refines the student's physical technique, and presents instructional methods for teaching survival skills.

Topics

- Use of force human factors
- Instructor development and training protocols
- Control principles
- Tactical handcuffing system
- Tactical entries
- Shoulder pin restraint system
- Collapsible baton system
- Weapon retention and disarming system
- Instructor development and training protocols

Audience

Participants should be commissioned peace officers, licensed security officers or public safety trainers. Physical participation is required. Participant should be in good physical condition.



TAA510 — Traffic Accident Avoidance

8 Hours

Traffic Accident Avoidance is an 8-hour course designed to demonstrate proper driving techniques required to avoid most collisions. Participants are introduced to common driving hazards faced during day to day operation of a vehicle. All participants will experience up to six hours of actual hands-on training in this medium-stress driving school.

Topics

- Risk management concerns
- Proper driving attitude
- Vehicle dynamics
- Vehicle control
- Proficiency exercises
- Vehicle inspection
- Kinetic energy / inertia
- Proper steering
- Methods of braking

Audience

Any licensed driver.





Central Texas Police Academy

Recognized as the oldest statewide law enforcement extension training agency in Texas, TEEX's Central Texas Police Academy has been preparing future officers for successful careers in law enforcement since the 1940s.

Prepare for a career in law enforcement

Students in the Basic Peace Officer course log over 680 hours of training and are taught by renowned experts with real-world law enforcement experience and position- and topic-specific knowledge and education.

Training Facilities

Headquartered at the Texas A&M University Riverside Campus in Bryan/College Station, the academy provides students with a balance of hands-on and classroom training in facilities that include:

- Outdoor firing range with 20 rotating targets
- Emergency vehicle driving track with 11 stations
- Tactical entry residential prop houses
- 400-meter circuit track
- Computerized classroom

TCLEOSE Exam

The physically demanding and academically rigorous program prepares cadets for the Texas Commission on Law Enforcement Officer Standards and Education (TCLEOSE) examination to become licensed peace officers. Graduates of the Central Texas Police Academy have a long-standing record of a 99+ percent passing rate on the exam and are recruited by law enforcement agencies throughout Central Texas and statewide.



Partnership with Blinn College

Attending and successfully completing the TEEX Central Texas Police Academy allows you to receive 20 college credit hours from Blinn College. Additionally, those college credit hours can be used to earn Blinn's Criminal Justice Associate in Applied Science (AAS) degree.

How to Apply

Applicants for the Central Texas Police Academy must be at least 21 years old and should have a clear criminal background. They may apply with or without a law enforcement agency sponsor.



FORENSIC SCIENCE ACADEMY

CERTIFICATE PROGRAM



The Texas Engineering Extension Service is proud to announce the new Forensic Science Academy. The Academy is currently offering two certificate programs, Forensic Technician and Forensic Investigator. The programs are designed for law enforcement professionals, civilians who work in forensics and students interested in pursuing a career in forensic investigation. As one of the largest providers of workforce training in the nation, TEEX has been offering technical training and assistance to professionals and workers for more than 80 years. A member of The Texas A&M University System, TEEX is recognized as the oldest statewide law enforcement extension training agency in Texas and has operated the Central Texas Police Academy since the 1940s.

Highlights of the Forensic Science Academy Certificate Program

- Offers a solid and broad-based education in forensic science and crime scene investigation.
- Is one of the most comprehensive forensic science certificate programs in the nation.
- Courses can be completed at your own pace.
- Enhances your potential for career advancement.
- Training is verifiable by any employer or agency.

Forensic Technician* - 80 Hours

Students earn this certificate upon successful completion of an 80-hour block of instruction, which will include:

- Crime scene security
- Crime scene search methods
- Identifying, documenting, collecting and packaging physical evidence
- Crime scene photography
- Crime scene diagramming
- Collecting DNA and trace evidence
- Obtaining fingerprints, palm prints and major case prints
- Fingerprint pattern and minutia recognition

This certificate course is a practical application course in which successful completion is based upon demonstration of methodology, techniques and skill in a course capstone. This course meets the requirements for the Texas Commission on Law Enforcement Officers Standards and Education (TCLEOSE) Intermediate Core Course #2106.

*Successful completion of the Forensic Technician certificate will apply toward the course requirements for the Forensic Investigator certificate by substituting for "Crime Scene Investigation" and "Latent Processing."

Forensic Investigator - 440 Hours

Certificate requires all 11 courses (Each course is 40 hours):

- Basic Criminal Investigator
- Crime Scene Investigation**
- Forensic Entomology - Available Summer 2008
- Forensic Photography - Available Summer 2008
- Latent Processing - Available Summer 2008
- Bloodstain Pattern Analysis Level I - Available Summer 2008
- Bloodstain Pattern Analysis Level II - Available Fall 2008
- Understanding Biological & Trace Evidence: Basic - Available Fall 2008
- Death Investigation - Available Summer 2009
- Skeletal Death Investigation - Available Summer 2009
- Capstone - Forensic Investigator Practical Applications - Available Fall 2009

**The 40-hour "Crime Scene Investigation" course meets the requirements for the Texas Commission on Law Enforcement Officers Standards and Education (TCLEOSE) Intermediate Core Course #2106.

coming soon

Forensic Analyst - Certificate Program





LET300 — Inmate Rights and Privileges

This course provides the county corrections officer with an understanding of inmate rights and responsibilities from a case law perspective. This course is one of the intermediate core courses required by TCLEOSE rules to receive intermediate certification as a county corrections officer. Successful completion of this course will provide the participant with 16 hours of TCLEOSE credit (average online completion time is 3 hours.)

Topics

- Correctional law
- First Amendment guarantees for inmates
- The Fourth Amendment
- The Fifth Amendment
- The Eighth Amendment
- The Fourteenth Amendment
- Summary of constitutional rights

Required Materials

Participants must have a 56K modem internet connection (broadband connection recommended), a current browser (i.e., Internet Explorer 6 or higher, Firefox 2.0 or higher, or Safari 2 or higher), Adobe Acrobat Reader 7 or higher, and Adobe Flash 9.0.45.0 or higher.



LET301 — Suicide Detection and Prevention in Jails

This course is designed to provide county corrections officers with an understanding of offenders with mental impairments and suicidal behavior and methods for detection and prevention of suicide. Suicide prevention should begin at arrest and continue throughout the individual's stay in a correctional facility. Experience has shown that almost all jail suicides can be averted with implementation of a comprehensive prevention program that includes staff training, intake screening, communication between staff, appropriate and safe housing, frequent observation, prompt intervention, and human interaction between staff and inmates. This course is one of the intermediate core courses required by TCLEOSE rules to receive intermediate certification as a county corrections officer. Successful completion of this course will provide the participant with 16 hours of TCLEOSE credit (average online completion time is 3 hours.)

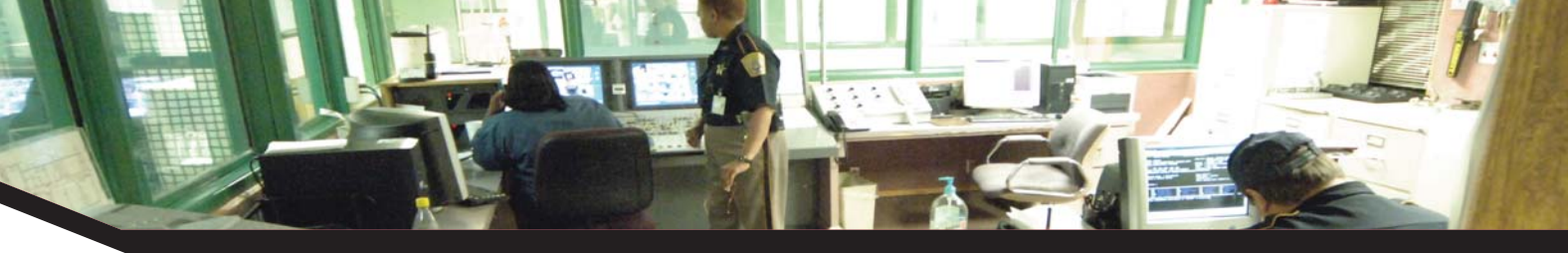
Topics

- Overview of jail suicide
- Factors influencing suicidal behavior
- Admission of inmates
- Mental retardation or mental illness
- Interviewing and assessing inmates
- Interacting with suicidal inmates
- Handling a suicide/attempted suicide
- Suicide prevention plans

Required Materials

Participants must have a 56K modem internet connection (broadband connection recommended), a current browser (i.e., Internet Explorer 6 or higher, Firefox 2.0 or higher, or Safari 2 or higher), Adobe Acrobat Reader 7 or higher, and Adobe Flash 9.0.45.0 or higher.





LET302 — Use of Force in a Jail Setting

This course provides the county corrections officer with a basic understanding of the statutory authority for use of force, use of force models, and use of force options. It is designed to increase the corrections officer's knowledge of the causes of disruptive behavior and disturbances. Jail administrators and officers will learn the appropriate preventative or remedial action to protect against potential civil liability. This course is one of the intermediate core courses required by TCLEOSE rules to receive intermediate certification as a county corrections officer. Successful completion of this course will provide the participant with 16 hours of TCLEOSE credit (average online completion time is 3 hours.)

Topics

- Use of force introduction
- Potential for use of force
- Defensive tactics
- Weapon techniques
- Deadly force
- Legal consequences of excessive force

Required Materials

Participants must have a 56K modem internet connection (broadband connection recommended), a current browser (i.e., Internet Explorer 6 or higher, Firefox 2.0 or higher, or Safari 2 or higher), Adobe Acrobat Reader 7 or higher, and Adobe Flash 9.0.45.0 or higher.



LET303 — Interpersonal Communications in the Correctional Setting

This blended-learning course is designed to educate jail, correction and detention personnel about human relations skills that will enhance a positive relationship between staff and inmates and between correctional workers and their peers. It will provide the corrections officer with an understanding of basic communications skills and the ability to use those skills effectively, allowing the employee to better control inmate interactions within a jail environment. Successful completion of this course will provide the participant with 16 hours of TCLEOSE credit (average online completion time is 3 hours.)

Blended-learning

This course consists of two components: online course work and classroom exercises centered on role playing scenarios facilitated by qualified instructors. This course is one of the intermediate core courses required by TCLEOSE rules to receive intermediate certification as a county corrections officer.

Topics

- Basics of communication
- Evaluating a situation
- Communicating with an inmate
- Application and management

Required Materials

Participants must have a 56K modem internet connection (broadband connection recommended), a current browser (i.e., Internet Explorer 6 or higher, Firefox 2.0 or higher, or Safari 2 or higher), Adobe Acrobat Reader 7 or higher, and Adobe Flash 9.0.45.0 or higher.





AIR540 — Intermediate Collision Investigation

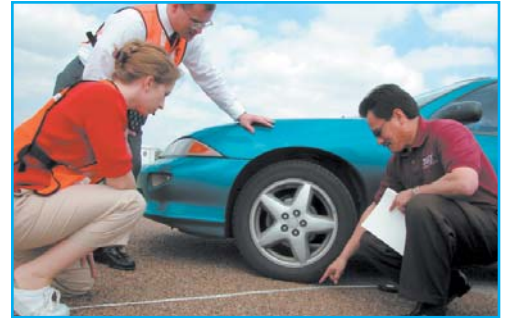


40 Hours

This course introduces the officer to basic drawing skills needed for preparing scale diagrams of the scene of a vehicle crash. It presents five formulas that can be used to determine the minimum speed of the vehicle based on skid and/or yaw marks to calculate combined speeds.

Topics

- Why peace officers investigate collisions
- Evidence identification and collection
- Scale drawing techniques
- Basic minimum speed calculations
- Conducting skid tests



AIR545 — Advanced Collision Investigation

80 Hours

This course is designed to give officers a much higher level of understanding in collision investigation than they received in the basic academy. Although it is ideal for officers who routinely investigate and specialize in major injury and fatality collision investigations, it is also appropriate for patrol officers who frequently investigate collisions.

Topics

- Refresher mathematics
- On-scene drawing techniques
- Introduction to airborne formulas
- Trigonometry and the collision investigator
- Introduction to in-line and oblique momentum analysis
- Introduction to time/distance formulas



AIR550 — Collision Reconstruction

80 Hours

Collision Reconstruction is designed for experienced collision investigators seeking new approaches to the complexities of analyzing traffic collisions. The course topics expand on the fundamentals of crash investigation with special emphasis on crash reconstruction. Critical thinking skills are sharpened to enable the trained crash investigator to analyze and understand evidence found at the crash scene. Momentum, principle direction of force, delta-V, vector analysis and time/distance are highlighted in this course. Case studies, many based on crash tests with known quantities as a guide, are used to illustrate major learning points.

Topics

- Applying critical thinking to traffic collisions using a “what-if” approach
- Recognizing, analyzing, and solving complex linear momentum problems
- Applying vector analysis and Delta V
- Applying time and distance equations

Audience

Experienced collision investigators seeking new approaches to the complexities of analyzing traffic collisions.



AIR555 — Pedestrian Collision Investigation

40 Hours

This course is designed for the experienced law enforcement officer, supervisor, or traffic homicide investigator who wishes to increase their individual knowledge, skills, and application techniques of pedestrian-vehicular collisions investigation.

Topics

- Why police investigate
- Vehicle analysis
- Scene analysis
- Nighttime collisions
- Types of impacts
- Determining impact
- Weather conditions
- Medical terminology
- Human anatomy
- Pedestrian formulas
- Time/distance formulas
- Pedestrian collision reconstruction

Audience

Law enforcement officers, traffic supervisors, traffic homicide investigators and practicing reconstruction professionals and/or those who evaluate collisions from a liability or personal injury perspective.

UXO200 — Unexploded Ordnance Technician Level I

200 Hours

This 5-week course offers comprehensive, hands-on training in the safe detection, location, identification and disposal of unexploded ordnances using the techniques, tools and emerging technologies of today's UXO environmental remediation industry. The Unexploded Ordnance Technician-Level I is approved by the U.S. Department of Defense. Graduates of the course meet the requirements of the U.S. Army Corps of Engineers (USACE) to work on USACE UXO remediation job sites. Students attending the UXO Technician Level I Course have the option of also attending a 40-hour Hazardous Waste Operations (HAZWOPER) course at TEEX. For more information on the HAZWOPER course, contact Emergency Services Training Institute division.

Topics

- Basic explosives safety
- Ground, air, chemical and underwater ordnance identification
- Fuze functioning and identification
- Use of UXO detection equipment and ordnance location techniques
- Electric, non-electric and shock-tube demolition procedures
- UXO disposal techniques

Prerequisites

Participants must submit the following items at least 21 days prior to the first day of class:

- Hazardous Waste Operations (HAZWOPER) physical
- Results of a recent (within the past 30 days) 5-panel drug-screen test
- Criminal history check results from a local law enforcement agency
- Ten-print fingerprint card
- Full tuition payment

Audience

Potential students for the Unexploded Ordnance Technician-Level I course must be in good physical condition. They must be capable of safely operating under stressful conditions and hazardous environments.



UXO220 — Explosive Breacher Entry

40 Hours

Explosive entry continues to grow in American law enforcement as a viable tactical option for high risk warrants and hostage rescues. The number of explosive breachers have increased over the last few years but remains relatively low compared to the number of tactical teams in the United States. In this 5-day course, explosive entries will be made through Class-1 steel doors as well as solid wood and hollow core doors. The course will cover construction of distraction devices and use of other explosives. The TEEX Explosive Breaching course is geared toward increasing the knowledge and skills of SWAT, Tactical and EOD teams.

Topics

- Types of explosives
- Explosives charges
- Operational planning
- Breaching methods
- Approach and placement

Audience

Law Enforcement, Military, Security Special Operations.





UXO215 — Ordnance Recognition and Improvised Explosive Device Awareness

16 Hours

The Ordnance Recognition and Improvised Explosive Device Awareness (ORIEDA) course is a 2-day course designed to train participants how to identify potential explosive hazards and make reasonable decisions to prevent injury, death or damage. This course is delivered through instructor-led facilitation, multi-media presentations and participant activities.

Topics

- Identification of military ordnance
- Identification of Improvised Explosive Devices (IED)
- Response actions taken when an IED is discovered

Audience

Law enforcement, private and industrial security, fire, emergency medical technicians, public works, emergency managers, HAZMAT technicians, school educators and administrators, retail facility managers, safety personnel, risk managers, and operations managers.

HAZ005 — HAZWOPER for Clean-Up Operations Training

40 Hours

Provides awareness of potential hazards encountered at hazardous waste clean-up operations. Provides knowledge and skills necessary to perform work with minimal risk to workers' health and safety. Provides awareness of the purpose and limitations of safety equipment and ensures workers safely avoid or escape from emergencies. Upon successful completion of this course, you will be awarded 4.0 Continuing Education Units (CEU) certified through the International Association for Continuing Education & Training.

Topics

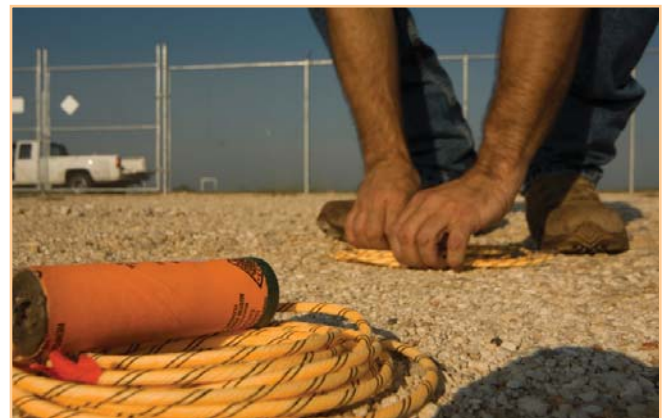
- Regulatory overview
- Hazard recognition and evaluation
- Toxicology
- Exposure guidelines
- Personal protective equipment
- Sampling techniques
- Field operations
- Site safety planning
- Standard operating procedures
- Decontamination
- Emergencies
- Field exercises
- Additional related subjects

Audience

All fire prevention, suppression, control and safety personnel, especially employees responsible for hazardous waste cleanup operations.

Other Information

This course is designed to meet requirements of 29 CFR 1910.120 (e)(HAZWOPER) for employees responsible for hazardous waste cleanup operations (RCRA, CERCLA).





Management / Supervisory Training

PST603 — Business Continuity Planning

16 Hours

The Business Continuity Planning course provides organization managers the information necessary to plan for, respond to, and recover from catastrophic events. Built upon the concepts of risk analysis and business impact planning, this course is designed to provide the roadmap to organizational emergency response for the coordinated response during and after a catastrophic event in which company facilities and processes are interrupted. The course provides the organization's managers with the critical decision making process and some key factors to be considered in the trans- and post-event periods.

Topics

- Assessing the need for business continuity planning
- Making critical decisions in the midst of potentially catastrophic circumstances
- Evaluating threats and vulnerabilities
- Creating business impact analysis to include hazard analysis and business unit analysis
- Conducting management critical incident scenarios and activities
- Developing comprehensive business continuity plans



PST607 — Effective Supervision in Health Care

24 Hours

Supervision in the health care environment demands effective leadership styles, a commitment to ethical standards, excellent communication skills, a thorough knowledge of administrative roles coupled with critical thinking and problem-solving skills. Additionally, this course helps transition new supervisors in the health care field to develop a better understanding of the risk management issues in the environment of care while creating synergy with their clinical team partners. Team building and management techniques are practiced to develop skills that improve team performance in the non-clinical setting.

Audience

Non-clinical supervisors/managers in the health care industry.

LET580 — Field Training Officer

24 Hours

The FTO course provides participants with the tools necessary to become an effective field-training officer in any security patrol operation. This tried-and-true program, as well as other FTO models, will be used to describe the qualities needed to become a successful field-training officer. Any agency desiring to restructure a field-training program or build a new program will find this 24-hour course immensely beneficial.

Topics

- FTO responsibilities and duties
- Program construction
- FTO program liabilities
- Forms and documentation
- Evaluation of trainees and termination procedures
- Remedial training and teaching techniques

Audience

Public safety personnel who use any form of field training program to train and/or evaluate the progress of newly hired employees.

LET586 — First Line Security Supervisor

24 Hours

This course is designed for first line supervisors. Participants will receive training in areas vital to effective leadership, including ethics, communication, leadership styles, employee evaluation, counseling, critical thinking and problem solving, administrative processes and use of force concepts.

Topics

- Making the transition from line officer to supervisor
- Security supervisors role as it relates to goals of the organization
- Current trends in leadership, management and supervision
- Applying work performance measures and employee evaluations
- Values, ethics, and fundamental principles of leadership and supervision
- Applying a systematic approach to identify and solve problems
- Budgeting, scheduling and staffing
- Special response issues and use of force concepts

Audience

This training is designed for supervisors in public or private asset protection and law enforcement responsible for day-to-day first line supervision of personnel.



PST605 — Managing Security Operations

16 Hours

This course focuses on the application of security management concepts in the development and implementation of the security systems and guard forces for organizations. The training supports the specialized knowledge required of security management personnel in effective planning, deploying, monitoring, supervising, and improving security systems.

Topics

- Security organization and functions
- Planning and management of security systems
- Security force staffing challenges
- Enhancing security system controls
- Avoiding security-related liability
- Conducting investigations
- Vulnerability assessments

Audience

Security managers (private/governmental), law enforcement officers, homeland security specialists, operations management, safety program managers, security design consultants, risk management and logistics .

LET620 — Sexual Harassment and Rape Prevention (SHARP)

8 Hours

The PPCT SHARP course is specifically designed to meet the needs of women when control methods and assault prevention are required. Principles and strategies for effectively reducing the likelihood of assault through both confrontation avoidance and actual techniques of countering an attack are stressed in this program. Because the techniques taught utilize efficient and effective methods of subject control that do not rely on size and strength, SHARP is a training system that can be used by anyone who is interested in personal safety. The course was designed by PPCT Management Systems, Inc, a leader in subject-control training systems.

Topics

- Survival learning research
- Prevention psychology
- Managing social or professional physical harassment
- Sexual assault countermeasures

Audience

Law enforcement officers, security guards/agents or corrections officers.

PST601 — Vulnerability Assessment: Strategy, Design, and Mitigation

24 Hours

Understanding the principles of physical security and incorporating them to support operations of a facility is an integral component of today's risk management process. Security administrators and company managers must be sensitive to the facility's security vulnerabilities, while insuring that the operations of the company are not impeded. This on-site planning/management level course focuses on the process within risk management that addresses threat-based vulnerability assessments. It provides key members of a facility's management team with training and hands-on experience in determining assets, identifying threats, assessing vulnerabilities and developing mitigation strategies.

Topics

- Evaluating assets
- Evaluating threats
- Assessing current security procedures
- Reducing organizational liability
- Identifying physical security system vulnerabilities
- Developing mitigation strategies to reduce vulnerabilities

Audience

General Management, Security Administration, Operations Management, Logistics, Human Resources, Facility Engineer, Safety, Environmental and Legal.



Operations / Skills-based Training

LET800 — Basic Criminal Investigation

40 Hours

This course is designed to give corporate investigators a much higher level of understanding in conducting investigations in the private sector. The course stresses the need to build a strong case file and management process.

Topics

- Basic principles of criminal investigation
- Case preparation
- Interviewing and interrogation techniques
- Property crime investigations
- Crimes against persons investigations
- Drug investigations
- Utilizing informants
- Crime Scene Investigation
- Subpoenas, warrants and search warrants
- Other types of investigation

Audience

Security, Private Investigators, Law Enforcement.

LET555 — Basic Special Weapons and Tactics (SWAT)

60 Hours

Basic Special Weapons and Tactics (SWAT) Training is a 60-hour tactical course designed to provide participants with a solid understanding of basic SWAT concepts and operations. Basic SWAT Training gives the new SWAT officer an opportunity to learn basic tactical operations theory and develop a level of proficiency in common SWAT operations.

Topics

- History of SWAT
- Building entry and searches
- Selection and physical evaluation of team members
- Tactical deployment and field skills
- Dynamic entry techniques
- Use of distraction devices and chemical agents

Audience

Law enforcement, security or military personnel assigned to a tactical team or special response unit.



LET810 — Crime Scene Search & Investigation

32 Hours

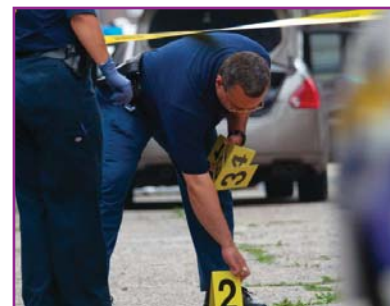
The Crime Scene Search & Investigation course provides the participant with hands-on techniques and procedures that will enable law enforcement personnel to collect and better evaluate crime scene evidence. Proper evidence documentation methods, sketching and photography are included as course objectives.

Topics

- Interviewing techniques
- Crime scene investigation and profiling
- Preparation of search and arrest warrant affidavits
- Sources of information
- Management of case information

Audience

Peace officers, security officers, and personnel assigned to investigate crime scenes.



PST860 — Drug Impairment and Behavior Recognition

8 Hours

This 1-day course is designed to provide company management the tools and training necessary to recognize and document drug/alcohol impairment in employees.

Topics

- Role of drugs in society
- How drugs work in the body
- Signs and assessment of impairment

Audience

Organizational professionals, including but not limited to: security managers, security officers, operational management, line supervisors and counselors.



UXO220 — Explosive Breacher Entry

40 Hours

Explosive entry continues to grow in American law enforcement as a viable tactical option for high risk warrants and hostage rescues. The number of explosive breachers have increased over the last few years but remains relatively low compared to the number of tactical teams in the United States. In this 5-day course, explosive entries will be made through Class-1 steel doors as well as solid wood and hollow core doors. The course will cover construction of distraction devices and use of other explosives. The TEEX Explosive Breaching course is geared toward increasing the knowledge and skills of SWAT, Tactical and EOD teams.

Topics

- Types of explosives
- Explosives charges
- Operational planning
- Breaching methods
- Approach and placement

Audience

Law Enforcement, Military, Security Special Operations.



PST606 — Security Dispatch Operator

24 Hours

The Security Dispatch Operator course is designed to train dispatchers and call center operators in common duties and familiarize them with the equipment that they may be using. Participants will work in communication skills, prioritization and decision-making skills, the role of dispatch in emergency operations, as well as how common communication and alarm systems work. Participants will also learn how to deal with the stress involved in the emergency operations of dispatch centers.

Topics

- Introduction to dispatch operations
- Basic dispatcher skills
- Call-taking skills
- Dispatching techniques
- Radio and alarm systems
- Stress management

Audience

Security, law enforcement, or emergency service personnel assigned to dispatch or call center operations.



SER430 — Spanish for Emergency Responders

24 Hours

Spanish for Emergency Responders is designed to develop fundamental Spanish speaking and listening skills pertaining to emergency situations. The unique aspects of this course are the discipline-specific scenarios and joint activities designed to approximate realistic conditions in areas specific to Fire, Emergency Medical Services (EMS), and Law Enforcement. Proficiency is gained through the positive effects of repetition and review. Throughout the 24-hour course, participants gain a deeper understanding of the Hispanic culture. Participants receive functional materials designed to assist, reinforce, and continue study of the Spanish language. Through increased language capabilities and communication techniques, injuries may be prevented and lives can be saved.

Topics

- Arrest commands
- Emergencies
- Traffic incidents
- Basic questions
- Gender and race

Audience

The participant should be employed by one of the emergency responder disciplines listed.

TAA510 — Traffic Accident Avoidance

8 Hours

Traffic Accident Avoidance is an 8-hour course designed to demonstrate proper driving techniques required to avoid most potential collisions. Participants are introduced to common driving hazards faced during day to day operation of a vehicle. All participants will experience up to six hours of actual hands-on training in this medium-stress driving school.

Topics

- Risk management concerns
- Proper driving attitude
- Vehicle dynamics
- Vehicle control
- Proficiency exercises
- Vehicle inspection
- Kinetic energy / inertia
- Proper steering
- Methods of braking

Audience

Any licensed driver.

Instructor Training

LET565 — Basic Instructor Development

40 Hours

This course is a hands-on, professional development experience for the new trainer/instructor. Participants will learn modern methods for effectively training adults and techniques for creating an effective learning environment.

Topics

- Teaching adults
- Understanding factors that affect learning
- Improving methods for effective instruction
- Understanding processes of teaching/learning
- Writing learning objectives
- Using instructional aids/media
- Designing lesson plans and course documentation
- Enhancing presentation skills and public speaking

Audience

Participants should be commissioned Texas peace officers, licensed security officers, Emergency Medical Technicians, public safety trainers, or safety/risk trainers.

This 40-hour course meets the Texas Commission on Law Enforcement Officers Standards and Education (TCLEOSE) Course #1014 instructor certification requirements.

LET650 — Defensive Tactics Instructor

40 Hours

The PPCT Defensive Tactics Instructor course is the first subject control system developed through tactical, legal, and medical research. Tactically, the system addresses the most common types of resistance that law enforcement personnel encounter, ensuring that participants learn job-related techniques pertaining to self defense. Legally, the PPCT System teaches a simple use of force continuum which clarifies the appropriate force level for every level of resistance. Medical research has been conducted on every PPCT technique to refine technique efficiency and to ensure that medical implications are proportional to the level of resistance.

Topics

- Survival Learning Research
- PPCT Control Principles
- Tactical Handcuffing
- Pressure Point Control Tactics
- Joint Locks
- Defensive Counterstrikes
- PPCT Impact Weapon System
- Instructor Development and Training Protocols

Audience

Participants should be commissioned peace officers, licensed security officers or public safety trainers. Physical participation is required. Participant should be in good physical condition.

LET515 — Emergency Vehicle Operations Instructor

50 Hours

This 5-day instructor course is designed to train experienced instructors to deliver the Emergency Vehicle Operations Instructor Course (EVOC). This class is a realistic, high-stress, driving program that offers the participant 40 hours of actual driving time.

Topics

- Civil and criminal liabilities
- Highway response driving
- Mechanics of driver control
- Night driving
- Off-road recovery
- Driving exercises
- Vehicle dynamic

Audience

Participants should be experienced drivers capable of operating a motor vehicle under stressful conditions and have experience as an instructor.



LET575 — Firearms Instructor

40 Hours

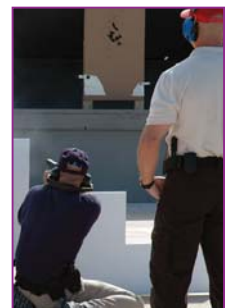
Participants will identify and correct student weaknesses, analyze and score targets, design and run courses of fire, and properly document police firearms training. Upon completion of this course, participants will be able to develop and implement comprehensive firearms training programs.

Topics

- Identifying and correcting shooter problems
- Applying firearms safety and liability issues
- Teaching the fundamentals of shooting
- Designing courses of fire
- Understanding firing range operations and firearms instructor duties

Audience

Participants should be commissioned peace officers or security personnel.



LET635 — Ground Avoidance Ground Escape (GAGE) Instructor

24 Hours

This PPCT Ground Avoidance Ground Escape Instructor course is designed to teach students how to avoid being taken to the ground and how to effectively escape if they do find themselves there. It reviews tactics for both open and narrow environments, reviews the four most common ground positions and escapes, refines the student's physical technique; and presents instructional methods for teaching survival skills.

Topics

- Use of Force Human Factors
- Instructor Development and Training Protocols
- PPCT Control Principles
- PPCT Shoulder Pin Restraint
- Ground Avoidance and Ground Escape

Audience

Participants should be commissioned peace officers, licensed security officers or public safety trainers. Physical participation is required. Participant should be in good physical condition.

LET700 — Personal Defense Spray Instructor

16 Hours

Personal Defense Spray Instructor is a 16-hour class designed to promote safe and effective use of law enforcement chemical defense sprays. The participant will learn when defense sprays are appropriate, tactics and techniques of application and proper means of handling and decontamination of those exposed. Additionally, the participant will be aware of the probable medical implications associated with the use of defense sprays.

Topics

- History of law enforcement chemical weapons
- Composition of modern defense sprays
- Physiological effects of defense sprays
- Delivery systems
- Use of force issues
- Tactics of application
- Control tactics follow-up procedures
- Decontamination procedures
- Defense spray selection
- Practical exercises

Audience

Law enforcement officers, detention officers, and security personnel authorized to carry defense sprays.

Other Information

Exposure to chemical defense spray during class is mandatory.

LET645 — Spontaneous Knife Defense Instructor

24 Hours

The PPCT SKD course focuses on the principles, methods and strategies needed to teach a person of any size or strength how to effectively defend against a spontaneous edged-weapon attack. This instructor course prepares students to instruct the PPCT Spontaneous Knife Defense course, refines the student's physical technique, and presents instructional methods for teaching survival skills.

Topics

- Survival learning research
- Control principles
- Psychology of combat knife systems
- Offensive knife attack strategies
- Target lethality
- Spontaneous knife defense system

Audience

Law enforcement officers, security guards/agents or corrections officers.

LET665 — Tactical Response Team Close-Quarter Countermeasures Instructor

40 Hours

The PPCT Tactical Response Team Close-Quarter Countermeasures (CQC) course is designed to provide tactical team operators with non-lethal force options. The course prepares operators to use a simple and systematic CQC system designed for apprehending subjects during dynamic entries, hostage rescue or to control a surrendering subject. This instructor course prepares students to instruct the PPCT Tactical Team Close-Quarter-Countermeasures basic course, refines the student's physical technique, and presents instructional methods for teaching survival skills.

Topics

- Use of force human factors
- Instructor development and training protocols
- Control principles
- Tactical handcuffing system
- Tactical entries
- Shoulder pin restraint system
- Collapsible baton system
- Weapon retention and disarming system
- Instructor development and training protocols

Audience

Participants should be commissioned peace officers, licensed security officers or public safety trainers. Physical participation is required. Participant should be in good physical condition.

PST602 — Vulnerability Assessment: Strategy, Design, and Mitigation Train-the-Trainer

40 Hours

The Vulnerability Assessment: Strategy, Design, and Mitigation Train-the-Trainer course is designed to provide certification to experienced trainers for the delivery of the VASDM direct delivery course. This course includes a review of adult teaching techniques, team teaching techniques, and facilitation skills in addition to the delivery of the technical aspects of threat-based vulnerability assessments. The certification of the instructors is accomplished through written examination and monitored teach-backs. The course provides a method for organizations to train their employees at reduced long-term training costs.

Audience

General Management, Security Administration, Operations Management, Logistics, Human Resources, Facility Engineer, Safety, Environmental and Legal.

MGT310 — Threat & Risk Assessment Course

24 Hours

This course trains key personnel within a local jurisdiction who are required to prevent, mitigate, manage, and/or respond to all hazards and/or mass casualty events, with special attention to terrorists incidents. Participant learning occurs in multi-disciplinary teams. Upon completion, these teams will be better able to conduct a capabilities-based comprehensive CBRNE/terrorism risk (threat and vulnerability), capabilities, and needs (planning, organization, equipment, training, and exercises) assessments. The course consists of lectures, small group discussions, participant activities, multimedia scenarios, and the conducting of vulnerability assessments for critical infrastructure and key resources selected by the host jurisdiction. Participant activities focus on the DHS Office of Grants and Training (G&T) State Homeland Security Assessment and Strategy (SHSAS) Program's jurisdictional assessments (i.e., risk, capabilities, and needs).

Topics

- Threat assessment
- Vulnerability assessments
- Capability assessments
- Needs assessments
- National preparedness goal
- Target capabilities list
- Universal task list
- HSPD 5 and 8

Prerequisites

Participants should work in one of the preceding disciplines/services, possess a working knowledge of the jurisdiction's Emergency Operations Plan (EOP) and complete a CBRNE/terrorism incident awareness course. TEEX, in cooperation with the Office of Grants and Training (G&T), distributes a WMD/Terrorism Awareness for Emergency Responders course via the internet at <http://www.teexwmdcampus.com>.

Audience

Public Safety Communication, Law Enforcement, Fire Services, Emergency Medical Service, Hazardous Material, Health Care, Governmental Administrative, Public Health, Public Works and Emergency Management. Jurisdictions are encouraged to invite private/public industry and volunteer organizations to participate in the training; these groups add an important dimension to the team.

Other Information

Participants should work in one of the listed disciplines/services, possess a working knowledge of the jurisdiction's Emergency Operations Plan (EOP), and have completed a WMD/terrorism incident awareness course. National Emergency Response & Rescue Training Center (NERRTC), in cooperation with the OG&T, distributes a WMD/Terrorism Awareness for Emergency Responders Course via the Internet at <http://www.teexwmdcampus.com>.

Class Size:

Maximum of 40 participants, minimum of 32 participants.

MGT315 — Enhanced Threat and Risk Assessment

16 Hours

The Enhanced Threat and Risk Assessment Course (ET&RA) will augment the process taught in the current Department of Homeland Security/Office of Grants and Training (DHS/OG&T) Threat and Risk Assessment course (T&RA). It provides managers of emergency responders with enhanced skills to conduct a comprehensive assessment of the critical vulnerabilities in the jurisdiction and develop an action plan to prevent, reduce and/or mitigate the potential damage from a Chemical, Biological, Radiological/Nuclear, and Explosive (CBRNE)/terrorism incident. The participants will conduct a detailed assessment of potential methods of CBRNE delivery against the jurisdiction's potential targets. Participants will then apply a systematic process to assess selected infrastructure, facilities, systems, and special events for methods and measures to prevent, reduce and/or mitigate vulnerabilities.

Prerequisites

None

Audience

Emergency response supervisors, managers, staff and community leaders from the following disciplines/functional areas are encouraged to attend this course:

- Public safety communication
- Law enforcement
- Fire services
- Emergency medical service
- Hazardous material
- Health care
- Governmental administrative
- Public health
- Public works
- Emergency management.

Jurisdictions are encouraged to invite private/public industry and volunteer organizations to participate in the training; these groups add an important dimension to the team.

Other Information

Participants should possess a working knowledge of the jurisdiction's Emergency Operations Plan (EOP) Terrorism Incident Annex (TIA). It is recommended that participants complete the TEEX Threat & Risk Assessment course (T&RA), a CBRNE/terrorism incident awareness course, or be approved by the local jurisdiction host. NERRTC, in cooperation with the Office of Grants and Training (G&T), distributes a WMD/Terrorism Awareness for Emergency Responders course via the internet at <http://www.teexwmdcampus.com>.

Course Size

Maximum of 25 participants, minimum of 18.

School Safety

PROJECT **PROTECT**



Project Protect is a comprehensive training program developed by TEEX in conjunction with the Texas School Safety Center at Texas State University San Marcos. The program, which includes planning, training and readiness exercises, helps schools prevent, prepare for, respond to and recover from targeted acts of violence by:

- Providing an assessment of the likelihood of such acts of violence
- Identifying and training employees in response measures that can help resolve acts of violence
- Evaluating the process of continuous improvement of the school system's readiness to prevent and respond to acts of violence
- Reducing the school's liability when acts of violence do occur.



Planning

- Emergency Response Operation Plan Technical Assistance (EOPTA)
- Planning tools for schools (on-line demo)
- Emergency operations planning workshops

Training

- Incident Command System (ICS)
- Vulnerability Assessment: Strategy, Design and Mitigation (VASDM)
- Drug Impairment and Behavior Recognition for Education Professionals (DIBREP)
- Disruptive Student Management (DSM)
- Advanced Law Enforcement Rapid Response Training (ALERRT)
- Emergency Aftermath Recovery Program

Readiness Exercises

- Tabletop Exercise/Analysis





Drug Impairment and Behavior Recognition for Education Professionals (DIBREP)

2 days
Drug and alcohol use in schools can lead to disruptive behavior and violence, which diminishes the quality of education for all students. Although DIBREP training is not intended to qualify participants as drug recognition experts, it will provide school personnel the skills and knowledge to evaluate and document students suspected of abusing drugs.

Audience
Faculty, counselors, nurses, school-based law enforcement officers, administrators.

Disruptive Student Management (DSM)

1 day
School personnel will learn techniques to control the physical actions of student violence with minimal probability of student injury. The techniques can be used by any teacher, regardless of size or strength, to stop or deflect an aggression. These critical skills will help allow the teacher to escape and call a law enforcement or security officer for assistance.

Audience
Faculty, counselors, nurses, school-based law enforcement officers, administrators.

Advanced Law Enforcement Rapid Response Training (ALERRT)

2 days, (16 hours)
Conducted by Texas State University's ALERRT Center, the Rapid Response Training course is a dynamic, hands-on, patrol-oriented course designed for those emergency responders who arrive first during an active shooter incident. This course involves direct delivery training that occurs in the classroom and practical exercises that take place during scripted force-on-force scenarios. Participants receive training in both settings using the latest technology available.

Topics

- Role of terrorism in active-shooter training
- Sequence of events at an active-shooter scene
- Law enforcement responses to active shooters and hostage/barricade situations
- Dangers facing first responders to active-shooter situations
- First-responder actions to active-shooter situations
- Proactive measures for addressing an active shooter
- Low-light searching/force techniques

Audience
Commissioned peace officers.

Emergency Aftermath Recovery

1 day
This course teaches school district participants about the recovery process following a critical incident and the importance of including recovery in emergency response planning. Recovery topics include infrastructure repair, Crisis Recovery Team development and operations, media and communication, and the long-term psychological effects of the event.

Audience
Administrators, faculty, counselors, nurses.

Tabletop Exercise/Analysis

1 day
The tabletop exercise is designed to test the emergency operations plan and evaluate the capabilities of school response personnel and local responders to manage an emergency. Participants will analyze the planning and school staff efforts between the Incident Command Post and other organizations that would typically be involved in the emergency response duties.

Audience
Administrators, faculty, staff, emergency responders.

Emergency Operations Plan Technical Assistance (EOPTA)

2 Days

Participants will take home a working safety plan to put into place from this two-day course, which provides guidelines for school administration to ensure that all aspects of school safety and preparation are included. Instructors will work with administrators and staff to develop an emergency operations plan, which is vital when an emergency incident occurs. Using this plan, teachers and administrators will be able to effectively communicate with emergency responders, which will help improve response times.

Audience

Administrators and staff.

Emergency Operations Planning Tool for Schools

Length N/A

This online template will help you and your staff develop a solid emergency operations plan, including assignment of duties, identification of resources, student-parent reunification and more. The plan complies with recommendations of the Department of Homeland Security and the Department of Education, and it was built by the Texas Engineering Extension Service in partnership with the Texas School Safety Center.

Audience

Administrators and staff.

Emergency Operations Planning Workshops

1 or 2 days, depending on needs of school

Through discussion and hands-on activities, your emergency operations planning team will learn about the various phases of emergency management, the Incident Command System and the National Incident Management System. Trained facilitators will guide your team through the planning process to develop a multi-hazard emergency operations plan that addresses prevention, preparedness, mitigation, response and recovery. The workshop materials can be customized to meet the specific needs or potential threat elements of your district or campus. Participants will be provided with a template and other resource materials to ease the planning process. If desired, the web-based planning tool offered by TEEEX can be utilized during the workshop.

Audience

Administrators and staff.

Incident Command System (ICS)

2.5 days

Participants will learn the process for integrating school emergency response plans with the expected emergency responders' actions. This on-site course is delivered using a team-teaching approach combining lectures, small group activities, and a tabletop exercise.

Audience

Administrators, staff, school-based law enforcement officers.

Vulnerability Assessment: Strategy, Design and Mitigation (VASDM)

3 days

Participants will learn about the assessment process for preventing and preparing for internal and external threats to students and staff. The training uses a multi-step approach to prevent or deter a violent offender or terrorist threat and to evaluate the vulnerabilities of the school facility's physical security system.

Audience

Administrators and Staff.

Training Facilities



Riverside Campus

Three TEEX training divisions are located at the Texas A&M Riverside Campus, a 1,900-acre campus adjacent to State Highway 47 and Highway 21 west of Bryan. TEEX occupies about 100,000 square feet of offices, classrooms and laboratories. The agency also maintains outdoor training facilities at Riverside, including overhead and underground electric power training fields, a firing range for law enforcement officers, a heavy equipment training field, an emergency vehicle-driving track, unexploded ordnance ranges and search grids, and simulation prop houses for tactical training.



Circuit Training Exercise Track

The circuit training exercise track, located at the Texas A&M Riverside Campus, is a 400-meter state-of-the-art outdoor track facility for training Central Texas Police Academy cadets. The L-shaped track includes 10 circuit training stations, an all-weather, rubberized surface and park-style lighting. The new track is the first phase of a complete physical skills training center, part of a proposed capital improvement program for TEEX's Public Safety and Security.

Firearms Range

The TEEX Firearms Range is a 20-station range equipped with computer-controlled turning targets. It includes dual horizontal moving targets with shooting positions out to 75 yards. The range includes an environmentally friendly bullet trap that captures all fired rounds. The bullet trap is rated to handle all common police firearms up to and including 50 BMG rifles.

Simulation Prop Houses

The TEEX Simulation Prop Houses include four duplex homes, each representing a small two-bedroom home adapted for tactical training and simulations. Each house has one or more tactical breach doors that allow students to train for all types of forced-entry situations using a multi-purpose steel frame and door system that is easily adjustable and infinitely reusable. The interiors are hardened to allow for practical simulations, including high-risk entries, distraction devices and defensive tactics simulations.

Unexploded Ordnance (UXO) Ranges and Search Grids

TEEX offers one of the only commercially available Unexploded Ordnance Technician (UXO) I course recognized by the U.S. Department of Defense. Students train on TEEX's UXO ranges and search grids to identify and locate subsurface and surface UXO using military and civilian magnetometers, perform UXO excavation procedures, transport UXO and demolition materials, prepare firing systems for destruction operations, and more.

Emergency Vehicle Driving Track

TEEX has a long history of delivering training in emergency vehicle driving and provides one of the most dynamic and fluid courses available. The TEEX emergency vehicle driving track – with its 11 training stations – helps students to safely respond to incidents by giving them hands-on practice that builds confidence in their equipment and individual performance in emergency driving.

Public Works Training Hangar

A vintage World War II hangar at the Texas A&M Riverside Campus was recently transformed into a state-of-the-art training facility for utility workers in the electric power and telecommunications industry. Classrooms in the new facility include state-of-the-art, interactive Smart boards, custom-built workbenches and cabinets, built-in audiovisual systems and automatic lighting.

Disaster City®

The mock community features full-scale, collapsible structures designed to simulate various levels of disaster and wreckage which can be customized for the specific training needs of any group. Emergency responders from across the globe venture to Disaster City® for unparalleled search and rescue training and exercises. Simply put, Disaster City® is the most comprehensive emergency response training facility available today.



Brayton Fire Training Field

Located adjacent to the Texas A&M University campus, the 120-acre facility attracts more than 45,000 emergency responders from all 50 states and more than 45 countries each year. Brayton's 132 specific training stations offer emergency responders unsurpassed instruction not only in firefighting, but also rescue, emergency medical services, hazardous materials, marine, aircraft and emergency management.



Texas Engineering Extension Service

The Texas Engineering Extension Service develops a skilled and trained workforce that enhances the public safety, security and economic growth of the state and the nation through training, technical assistance and emergency response.

The Texas Engineering Extension Service (TEEX) is an internationally recognized leader in the delivery of emergency response and workforce training, exercises and technical assistance. A member of The Texas A&M University System, the agency provides hands-on, customized training solutions that impact the homeland security and the occupational and economic development of Texas and beyond.

TEEX serves approximately 225,000 people representing all 50 states, the District of Columbia, five U.S. territories and 53 countries each year through training and technical assistance. Major TEEX programs include fire services, search and rescue, homeland security, public safety and security, public works, safety and health, and economic development.

The agency's ongoing efforts for the past 80 years have resulted in cleaner drinking water, better roads and infrastructure, improved workplace safety, enhanced homeland security and increased public safety. TEEX enhances the technical skills of employed workers and those entering the workforce while helping manufacturers adopt new technologies to improve productivity and profits.

Private sector customers and public agencies count on TEEX for the excellent training and technical expertise provided by more than 1,000 employees and adjunct instructors, many of whom are the top experts in their fields. TEEX provides its unique, specialized training, exercises and technical assistance worldwide for customers ranging from small volunteer fire departments to large international companies.

Home to the National Emergency Response and Rescue Training Center, TEEX has been at the forefront of preparing emergency responders to combat natural disasters and terrorist incidents involving weapons of mass destruction since 1998. In addition, TEEX is the sponsoring agency for Texas Task Force 1, which serves as a state and federal urban search and rescue team and oversees Texas' swift water rescue program.



FIRE SERVICES EMERGENCY SERVICES TRAINING INSTITUTE

Tel: 866-878-8900 (toll-free)
E-mail: esti@teemail.tamu.edu



SEARCH & RESCUE

Tel: 888-999-9775 (toll-free)
E-mail: usar@teemail.tamu.edu



HOMELAND SECURITY NATIONAL EMERGENCY RESPONSE & RESCUE TRAINING CENTER

Tel: 877-438-8877 (toll-free)
E-mail: nerrtc@teemail.tamu.edu



PUBLIC SAFETY & SECURITY

Tel: 800-423-8433 (toll-free)
E-mail: publicsafety@teemail.tamu.edu



PUBLIC WORKS ENGINEERING, UTILITIES & PUBLIC WORKS TRAINING INSTITUTE

Tel: 800-824-7303 (toll-free)
E-mail: eupwti@teemail.tamu.edu



SAFETY & HEALTH PROFESSIONAL & REGULATORY TRAINING

Tel: 800-723-3811 (toll-free)
E-mail: otisec@teemail.tamu.edu



ECONOMIC DEVELOPMENT TECHNOLOGY & ECONOMIC DEVELOPMENT

Tel: 800-541-7149 (toll-free)
E-mail: ted@teemail.tamu.edu



PUBLIC SAFETY & SECURITY

301 Tarrow
College Station, TX 77840-7896
Toll-free 800-423-8433
publicsafety@teexmail.tamu.edu
www.teex.org/publicsafety

