



# Watershed Coordination Steering Committee

Texas State Soil and Water Conservation Board

Colorado County Agriculture Building  
Columbus, Texas  
Thursday, March 9, 2006

March 9, 2006

1



## Today's Agenda Items

- Update on Watershed Coordinator Activities Across the Region
- Discussion/Questions on the Plum Creek WPP
- Overview of other Watershed Protection Plans within the Wharton Region
  - Dickinson Bayou
  - Upper San Antonio River
  - Bastrop Bayou
- Path Forward

March 9, 2006

2



## Update on Watershed Coordinator Activities

- Participated in the EPA's Webcast on the "Handbook for Developing Watershed Plans to Restore and Protect our Waters". The handbook is available online at: [http://www.epa.gov/owow/nps/watershed\\_handbook/](http://www.epa.gov/owow/nps/watershed_handbook/)
- Attended the Clean Rivers Program meetings for the Brazos River Authority and the Nueces River Authority
- Attended training for ArcView version 9.1
- The first Coordinated Watershed Planning in Southeast and South Central Texas Newsletter sent out.

March 9, 2006

3



## Update on Plum Creek

- December 15 WCSC Selected Plum Creek for WPP
- January 6 first official visit to Plum Creek with GBRA, Plum Creek Conservation District (PCCD), and Caldwell and Hays County Extension Agents
- Plum Creek WPP Press Release by TSSWCB
- Introduced the Plum Creek WPP at the meetings of Caldwell-Travis and Hays County SWCDs, also at the PCCD and the GBRA Board meetings
- Attended the Arroyo Colorado WPP Steering Committee Meeting to get an overview of selecting stakeholders

March 9, 2006

4



## Discussion/Questions on Plum Creek

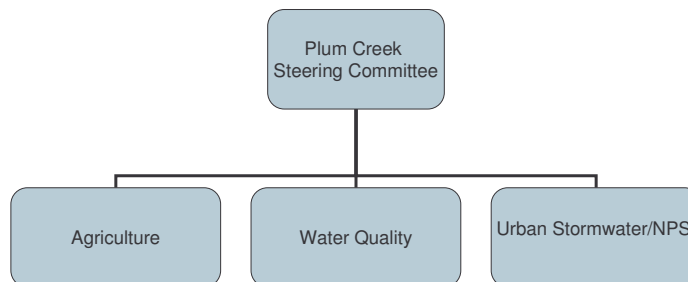
- Steering Committee Structure and Creation
- Work Groups – Agriculture, Water Quality, and Flooding/Stormwater or Urban NPS
- Outreach and Education will be a part of each these work groups instead of its own group

March 9, 2006

5



## Plum Creek Watershed Partnership Structure



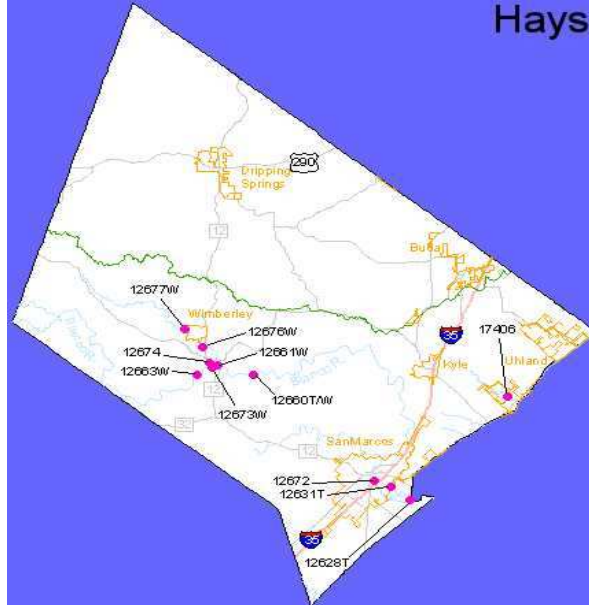
March 9, 2006

6



# Do we need additional Sampling/Monitoring on Plum Creek for the WPP?

## Hays

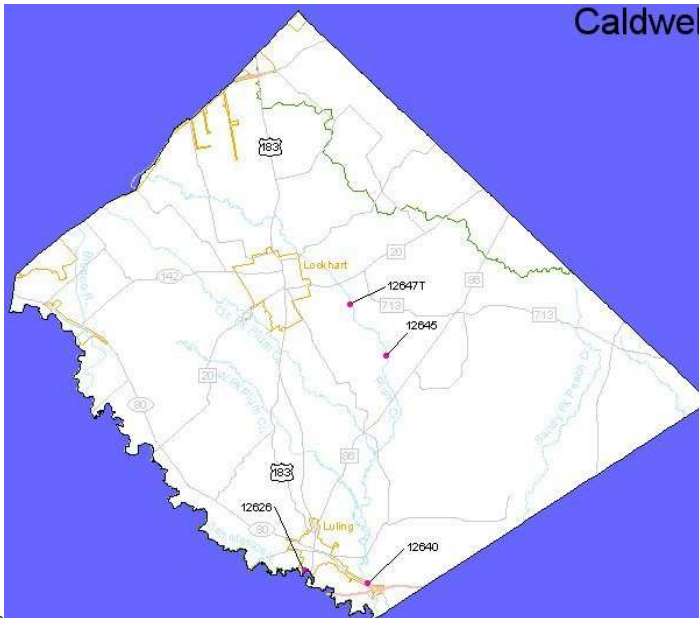


March 9, 2006

7

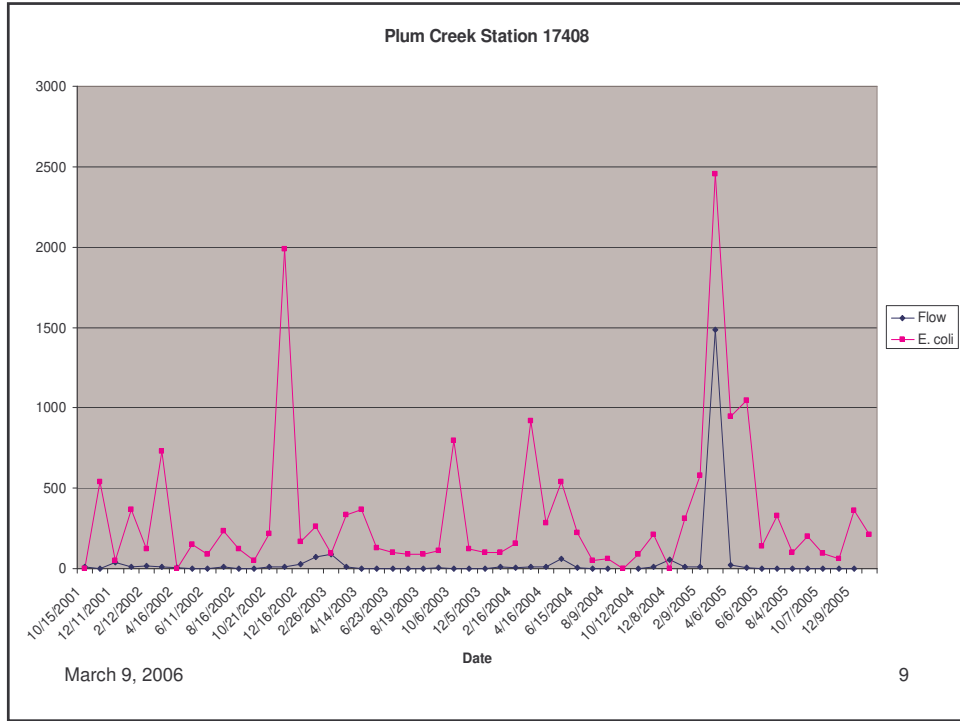


## Caldwell



March 9, 2006

8



**TSSWCB**

Station #	Site	County	Start Date	End Date
12640	Plum Creek at CR 135 SE of Luling	Caldwell	2/1/1998	11/6/2005
12645	Plum Creek at CR 197 Between Lockhart and Luling	Caldwell	10/1/1996	12/9/1997
17406	Plum Creek at Plum Creek Road North of Uhland in Hays County	Hays	10/1/2001	12/9/2005

March 9, 2006 10



The following is straight from the EPA Handbook for developing Watershed Plans to Restore and Protect our Waters in Chapter 2. Option #3 is the option we are proposing.

If a TMDL has not yet been developed, the plan should be designed to attain water quality standards if possible, in addition to other environmental goals. EPA encourages states to include in their watershed plans all the significant sources and causes of impairments and threats to the waterbodies of concern. Therefore, watershed plans should address not only the sources of water quality impairment but also any pollutants and sources of pollution that need to be addressed to ensure the long-term health of the watershed. If a TMDL is later completed and approved, the plan might need to be modified to make it consistent with the TMDL. EPA continues to encourage the development of TMDLs or, where applicable, sets of such TMDLs on a watershed basis. Figure 2-2 illustrates the potential relationships between TMDLs and watershed plans.

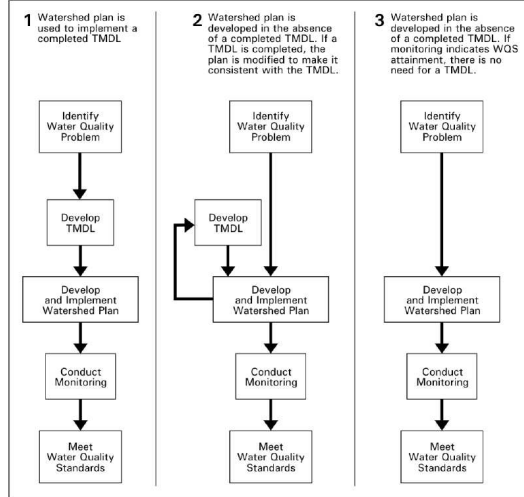
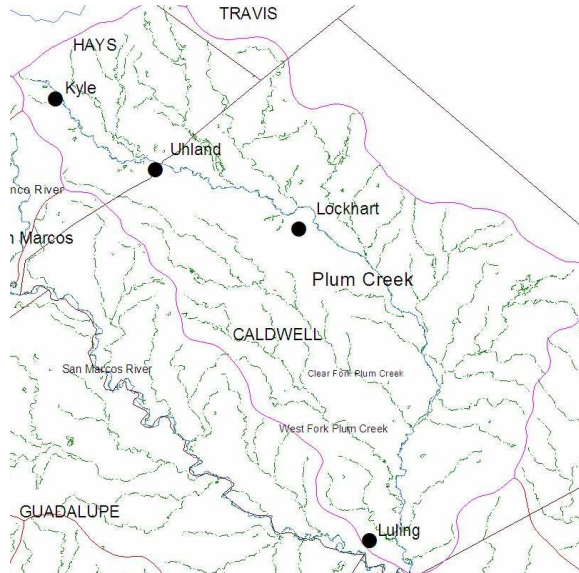


Figure 2-2. Potential relationships between TMDLs and watershed plans.

March 9, 2006



## Tour of Plum Creek



March 9, 2006

12



Kyle, near the headwaters of Plum Creek, notice the houses in the background, some are built within the easement of the lake

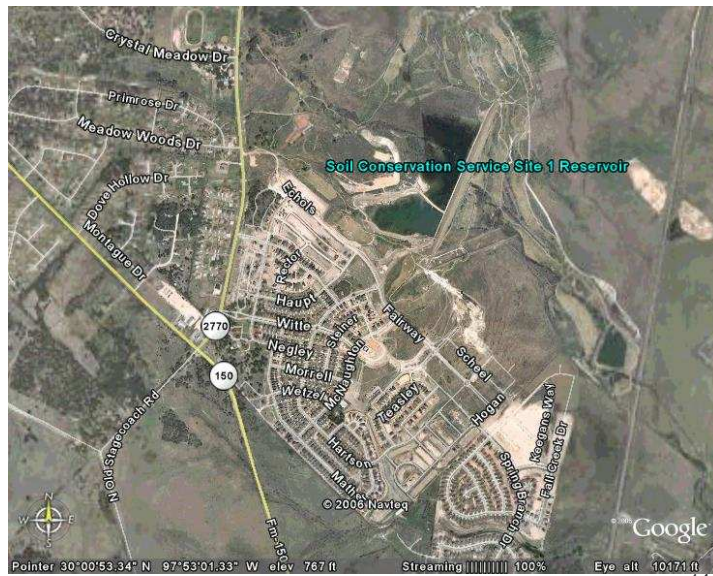


March 9, 2006

13



Kyle, from space...



March 9, 2006

14



Plum Creek near Uhland and the Hays/Caldwell  
County line.



March 9, 2006

15



Cattle Grazing and Row crop Farming are two major Agricultural land  
uses in the Plum Creek Watershed



March 9, 2006

16





Plum Creek near Lockhart.

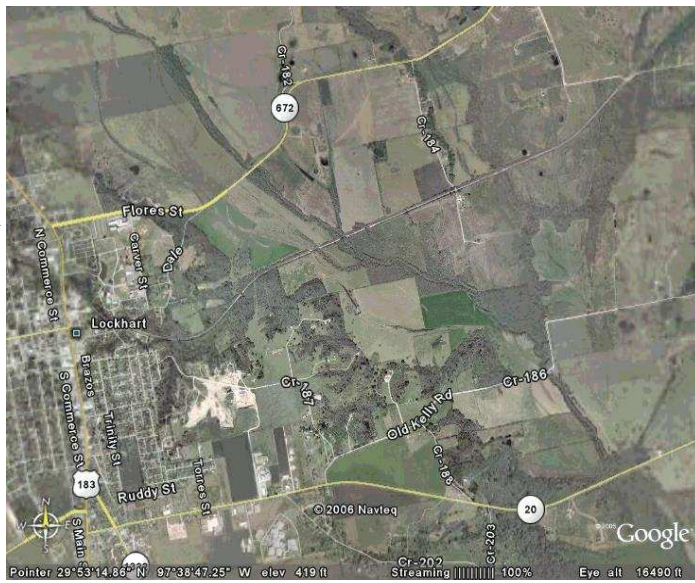


March 9, 2006

17



Lockhart  
And  
Plum Creek



March 9, 2006

18



Clear Fork Creek is a major tributary of Plum Creek



March 9, 2006

19



PCCD Site 28 Flood Control Lake southeast of Lockhart

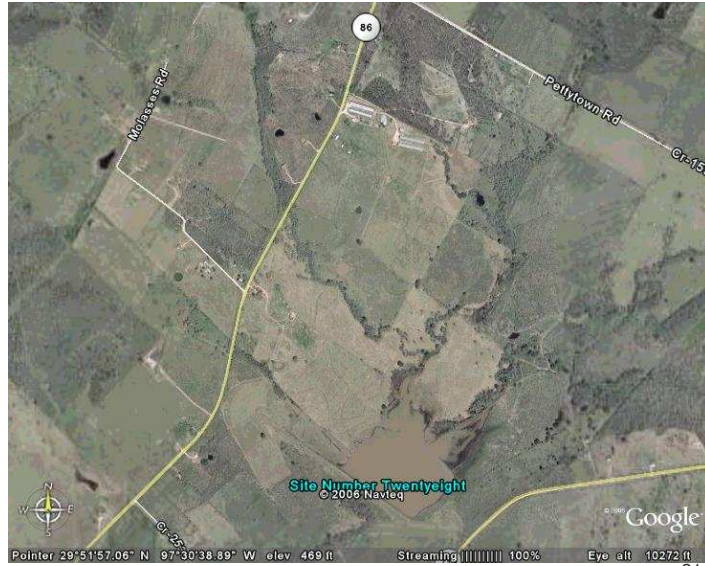


March 9, 2006

20



Site 28,  
And area  
surrounding



March 9, 2006

21



Oil and Gas Production is very high around Luling.

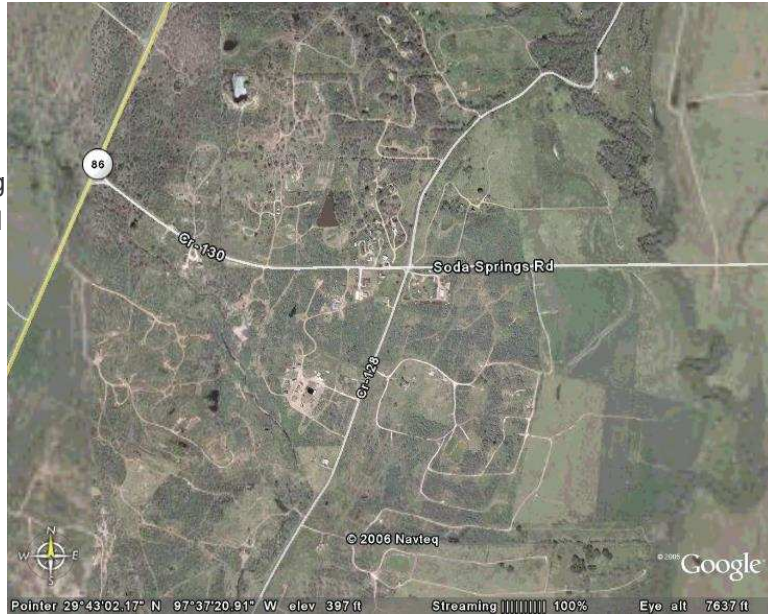


March 9, 2006

22



Portion  
of Luling  
Oil Field



March 9, 2006

23



PCCD  
Site 38  
Flood  
Control  
Lake north  
of Luling



March 9, 2006

24



Plum Creek near Luling



March 9, 2006

25



Plum Creek  
at CR135  
Near Luling



March 9, 2006

26



## Other WPP Projects Within the WRO

- Dickinson Bayou, Ms. Susan Benner, Texas Sea Grant
- Upper San Antonio River, Mr. Stephen Lusk, San Antonio River Authority
- Bastrop Bayou, Mr. Carl Masterson, Houston-Galveston Area Council

March 9, 2006

27



## Path Forward

- First Partnership Steering Committee Meeting will occur in May 2006.
- The April Newsletter is in the works, is anybody interested in submitting topics or an article?
- Next WCSC Meeting on June 8

March 9, 2006

28



# Adjourn

- Thanks! Any Questions

March 9, 2006

29



Brian Koch  
Watershed Coordinator

Texas State Soil and Water Conservation Board

Wharton Regional Office  
1120 Hodges Ln  
Wharton, TX 77488

979-532-9496 v  
979-532-8765 f

bkoch@tsswcb.state.tx.us  
<http://www.tsswcb.state.tx.us/>

*Authorization for use or reproduction of any original material  
contained in this presentation is freely granted.  
TSSWCB would appreciate acknowledgement.*

March 9, 2006

30