

## Bastrop Bayou Watershed Protection Plan

December 11, 2008

## Bastrop Bayou



## What are we trying to do?

- Create a Watershed Protection plan
- Implement the watershed protection plan
- Create a sustainable program beyond the contract period (08/2009)

## What has been completed so far?

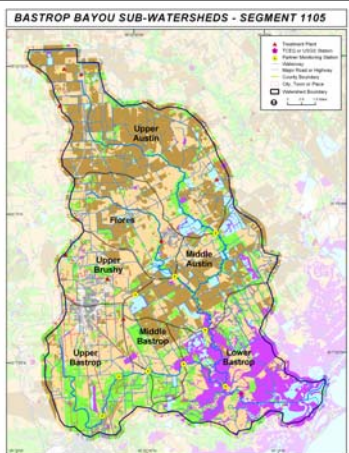
- Population forecasts till 2035
- Load Duration Curves for "plan B"
- WWTP estimates in relation to flow
- Runoff curve numbers
- Sub watershed delineation
- New Land Use / Land cover
- 24 public meetings (last Tuesday and Thursday of every month)

## What has been completed so far? (con't)

- SELECT model (90%) – Print and develop maps
- Regular attendance from elected Officials
- Model Home Owner Association By-Laws approval
- Junior and senior high school science curriculum changes

## What has been completed so far? (con't)

- Texas Stream Team Volunteers
- Trash Bash launch (last Saturday of March)
- Customize Load Duration Curve software



## What do we need to do?

- Determine flow results for Bastrop Bayou (Tidal Prism Model)
- Review all results with the community

## How Long?

- December 30: Complete SELECT Modeling exercise
- January 30: Complete Tidal Prism Model exercise and present results.

## Lessons Learned

- Drinking & Driving; Writing & Implementation - do not mix
- Cash is King
- The local economy and Bonds are very important (but not James Bond)
- The County Commissioner is a great friend to have

## Thank You



## More Information [www.bastropbayou.org](http://www.bastropbayou.org)

Om Chawla  
Houston-Galveston Area Council  
(713) 993-4586  
[om.chawla@h-gac.com](mailto:om.chawla@h-gac.com)

