



# **Participation Forecast 2009-2020**

Texas Institutions of Higher Education

**January 2009**

**Planning and Accountability**



## Texas Higher Education Coordinating Board

A.W. "Whit" Riter III, CHAIR  
Fred W. Heldenfels IV, VICE-CHAIR  
Elaine Mendoza, SECRETARY OF THE BOARD  
Charles E. "Trey" Lewis III, STUDENT MEMBER OF THE BOARD  
Laurie Bricker  
Joe B. Hinton  
Brenda Pejovich  
Lyn Bracewell Phillips  
Robert W. Shepard  
Robert V. Wingo

Tyler  
Austin  
San Antonio  
Houston  
Houston  
Crawford  
Dallas  
Bastrop  
Harlingen  
El Paso

Raymund A. Paredes, COMMISSIONER OF HIGHER EDUCATION

### Mission of the Coordinating Board

The Texas Higher Education Coordinating Board's mission is to work with the Legislature, Governor, governing boards, higher education institutions, and other entities to help Texas meet the goals of the state's higher education plan, *Closing the Gaps by 2015*, and thereby provide the people of Texas the widest access to higher education of the highest quality in the most efficient manner.

### Philosophy of the Coordinating Board

The Texas Higher Education Coordinating Board will promote access to quality higher education across the state with the conviction that access without quality is mediocrity and that quality without access is unacceptable. The Board will be open, ethical, responsive, and committed to public service. The Board will approach its work with a sense of purpose and responsibility to the people of Texas and is committed to the best use of public monies. The Coordinating Board will engage in actions that add value to Texas and to higher education. The agency will avoid efforts that do not add value or that are duplicated by other entities.

The Texas Higher Education Coordinating Board does not discriminate on the basis of race, color, national origin, gender, religion, age, or disability in employment or the provision of services.

# Participation Forecast 2009-2020

## Table of Contents

<b>Foreword .....</b>	<b>iii</b>
<b>Participation in Texas' Colleges and Universities to 2020 .....</b>	<b>1</b>
<b>Texas Public College and University Participation Forecast Methodology.....</b>	<b>21</b>

### List of Tables

Table 1:	Fall Headcount Participation Forecasts – Texas Institutions of Higher Education .....	2
Table 2:	Forecasted Changes in Fall Headcount Participation .....	2
Table 3:	Participation Projections by Region – Texas Public Institutions of Higher Education .....	4
Table 4:	Fall Headcount Participation Forecasts – Texas Public Universities .....	10
Table 5:	Forecasted Changes in Fall Headcount Participation – Public Universities.....	12
Table 6:	Fall Headcount Participation Forecasts – Two-Year Colleges .....	14
Table 7:	Forecasted Changes in Fall Headcount Participation – Public Two-Year Colleges .....	17
Table 8	Fall In-State Participation by Age and Race/Ethnicity – Public Universities .....	23
Table 9:	In-State and Nonresident Participation for Public Universities .....	24
Table 10:	Fall In-State Participation by Age and Race/Ethnicity – Public Two-Year Colleges .....	25
Table 11:	In-State and Nonresident Participation for Public Two-Year Colleges.....	26
Table 12:	Texas Statewide Population by Race/Ethnicity .....	28
Table 13:	In-State Participation Alternative Forecasts – Public Universities .....	30
Table 14:	In-State Participation Alternative Forecasts – Public Two-Year Colleges.....	31
Table 15:	In-State Participation – Public Universities Comparison of Preliminary to Forecast In-State Participation for 2006.....	34
Table 16:	In-State Participation – Public Two-Year Colleges Comparison of Preliminary to Forecast In-State Participation for 2008 .....	35
Table 17:	Nonresident Participation Ratios – Public Universities .....	38
Table 18:	Nonresident Participation Ration – Public Two-Year Colleges .....	39
Table 19:	Adjustments to Draft Participation Forecasts Based on Local Conditions .....	41
Table 20:	Participation at Public and Independent Universities .....	42
Table 21:	Independent Senior College and University Forecast .....	43

**List of Figures**

Figure 1: Public Institution Participation Forecast ..... iii  
Figure 2: Texas Higher Education Coordinating Board 10 Regions ..... 3  
Figure 3: Participation Forecast Development Process ..... 20

## Participation Forecast 2009-2020 Foreword

Biennially since 1979, the Texas Higher Education Coordinating Board has calculated enrollment trends and expectations which are fundamental to higher education planning. In times of changing demographics, these forecasts become even more critical as they inform the higher education community and the state of anticipated enrollments if current patterns continue. The *Participation Forecast 2009-2020* is the 16th installment in the Coordinating Board's series on this important topic.

### Participation Forecast

The methodology used to produce the participation forecast has remained relatively unchanged since 1979. It applies past enrollments to population projections by geographic location, age, and race/ethnicity. Possible future differences in the rate of high school graduation, increases in higher education participation by racial/ethnic groups, or changes in local policies are not incorporated into this methodology. For that reason, the forecast is conservative; it projects future enrollments if current trends continue.

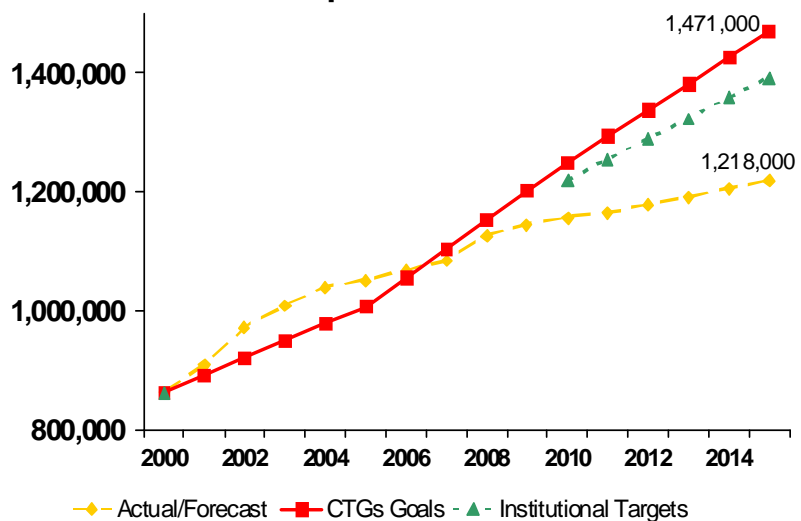
The participation goal of Coordinating Board's *Closing the Gaps by 2015* higher education plan, in contrast to the Participation Forecast, is based on what the state wants enrollments to be for comparability with other large population states and for equal participation rates for students of all ethnic/racial groups.

The Texas State Data Center's population projections released in 2004 and 2006 indicated that the Texas

population, as a whole, was anticipated to grow more rapidly than previously estimated. As a result, the Coordinating Board updated its *Closing the Gaps (CTG)* participation goal and targets in 2005. The 2015 participation goal was raised from enrolling 500,000 more students than in fall 2000 to enrolling 630,000 more students. Most of this increase is the result of growth in Texas' Hispanic population, which is projected to grow even more rapidly than previously thought. Unfortunately, according to this forecast, Hispanic enrollments in higher education are not projected to increase proportionally.

Figure 1

### Public Colleges' and Universities' Participation Forecast



To urge higher education institutions to strive to help the state meet the *CTG 2015* participation goal, the Coordinating Board asked each public institution to submit ambitious institutional targets for participation (called Institutional *Closing the Gaps* Targets).

Figure 1 demonstrates the difference between the enrollment forecast projected in this document, the Coordinating Board's *CTG* goals, and the Institutional *Closing the Gaps* Targets. The comparison indicates that Texas is not yet on track to meet its *Closing the Gaps* goal. This forecast estimates Texas institutions will enroll 1.34 million students in 2015 (or an additional 368,000 students over 2000). If true, the state would be about 252,000 students short of the 2015 *Closing the Gaps* goal of 1.6 million students. The Coordinating Board has stated that if any group does not reach its goal, the state as a whole has not achieved its goal.

To begin the process of planning and preparing for the years beyond 2015, this report estimates enrollments through 2020. The *Closing the Gaps* plan, on the other hand, only states participation expectations through 2015.

### **A Note of Caution**

The following points should be remembered when reviewing this forecast:

- The Texas State Data Center (TSDC) periodically updates its population projections and reconsiders the migration scenario to use for long-term projections. The 2004 *Participation Forecast* used the 2000-2002 net migration pattern as a basis for its enrollment projections. The 2006 Forecast used net migration rates that were one-half of those experienced during the 1990-2000 timeframe, as suggested by TSDC. At the time this report was prepared, TSDC had not issued revised 2008 population projections. On the recommendation of TSDC, this forecast uses the 2000-2004 migration scenario developed in 2006.
- The total population projected for 2015 in the prior participation forecast was 26,156,715; the total 2015 population used in this report is 27,581,188, or 5.4 percent higher than the previous total. For the college-going 15-34 age group, the difference is 8.3 percent higher. Because the population forecast is an integral part of the projection methodology, the higher projected population has a direct effect on anticipated enrollments.
- The other primary factor influencing projected participation is the recent enrollment trend. Enrollment growth at public and independent colleges and universities from 2000 to 2002 was 11.9 percent, whereas the enrollment growth for the five-year period from 2003 to 2007, which services as the basis for this forecast, was only 7 percent. This much lower rate of growth is reflected in the projected enrollments. Despite the rather flat enrollment growth, the higher population projections result in 2015 enrollments that are slightly higher than those forecast two years ago.
- As indicated, the forecast model is influenced strongly by historical in-state participation patterns at each institution and projected population changes by

county. This forecast may not accurately reflect future participation if institutions recruit students from different areas or of different ethnic groups, as is the goal of *Closing the Gaps*. Institutional decisions to change or impose enrollment limitations would also reduce the forecast's accuracy.

- Economics affect participation. Participation has usually expanded in times of increasing unemployment, in part because students want to prepare for better jobs. Also, the availability of financial aid influences students' decisions to enter or return to college. Tuition at most institutions have increased recently, and enrollment growth plateaued, perhaps in response to higher costs. The recent credit crunch is viewed as affecting the availability of non-governmental educational loans, which may also affect enrollments.

## Participation Forecast 2009-2020

### Participation in Texas' Colleges and Universities to 2020

About 1,299,000 students enrolled in Texas' public and independent colleges and universities in fall 2008, representing a 3.5 percent increase over fall 2007 enrollment. This growth rate was an improvement over the nearly static fall 2004 to fall 2005 level of 0.9 percent, but considerably less than the annual growth rate of over 5 percent experienced in fall 2000 and fall 2001. The recent decline in enrollment growths affects the participation forecast because the model relies on recent trends to project future levels. This forecast is also based on population projections from the Texas State Data Center, which suggested use of a migration scenario that anticipates faster growth than the scenario used in 2006.

Together these factors mean that enrollments projected in this report are higher than the 2006 estimate. For 2009 to 2010, the forecast anticipates a growth rate of 9.1 percent, or about 11,500 additional students. In the two following five-year increments, a further reduction in growth is projected. From 2010 to 2015, enrollment is estimated to increase by 5 percent (or an additional 64,000 students), and by 5.6 percent from 2015 to 2020 (or 74,000 more students). If current trends continue, Texas public and independent colleges and universities are expected to enroll over 1.34 million students by 2015, compared to a *Closing the Gaps* goal of 1.6 million. (See Tables 1 and 2.)

For public universities, fall 2008 participation totaled 509,000 students. This figure represents an increase of nearly 12,000 more students than enrolled in 2007, or an annual growth rate of 2.4 percent. The fall 2000 to fall 2005 five-year participation increase totaled 17 percent. From 2005 to 2010, participation is forecasted to increase more slowly at 7.2 percent to about 520,000 students. For the next five-year period, from 2010 to 2015, the rate of enrollment growth is projected to decline again to 5.7 percent and then to 4.2 percent from 2015 to 2020. Texas public universities are expected to enroll 550,000 students by 2015 and 573,000 in 2020.

Texas public two-year colleges have generally grown more rapidly than universities since the mid-1960s and are expected to continue to outpace universities' growth. Public colleges' preliminary participation in fall 2008 totaled 617,600 students. This represents an increase of about 30,000 students over fall 2007 participation, or a 5.2 percent annual growth rate. This Participation Forecast estimates two-year institutions will grow by 12.3 percent for the five-year period from 2005 to 2010, to about 636,000 students. For the subsequent five-year period—from 2010 to 2015—colleges' growth is expected to slow to 5.1 percent, just as projected for universities. Unlike universities, colleges' pace of growth is anticipated to rebound to 7.4 percent from 2015 to 2020. As a result of these increases, Texas public two-year colleges are expected to enroll more than 668,000 students by 2015, and 718,000 by 2020.

No enrollment projections are made for health-related institutions because their enrollments are more closely tied to state policies than to state population growth.



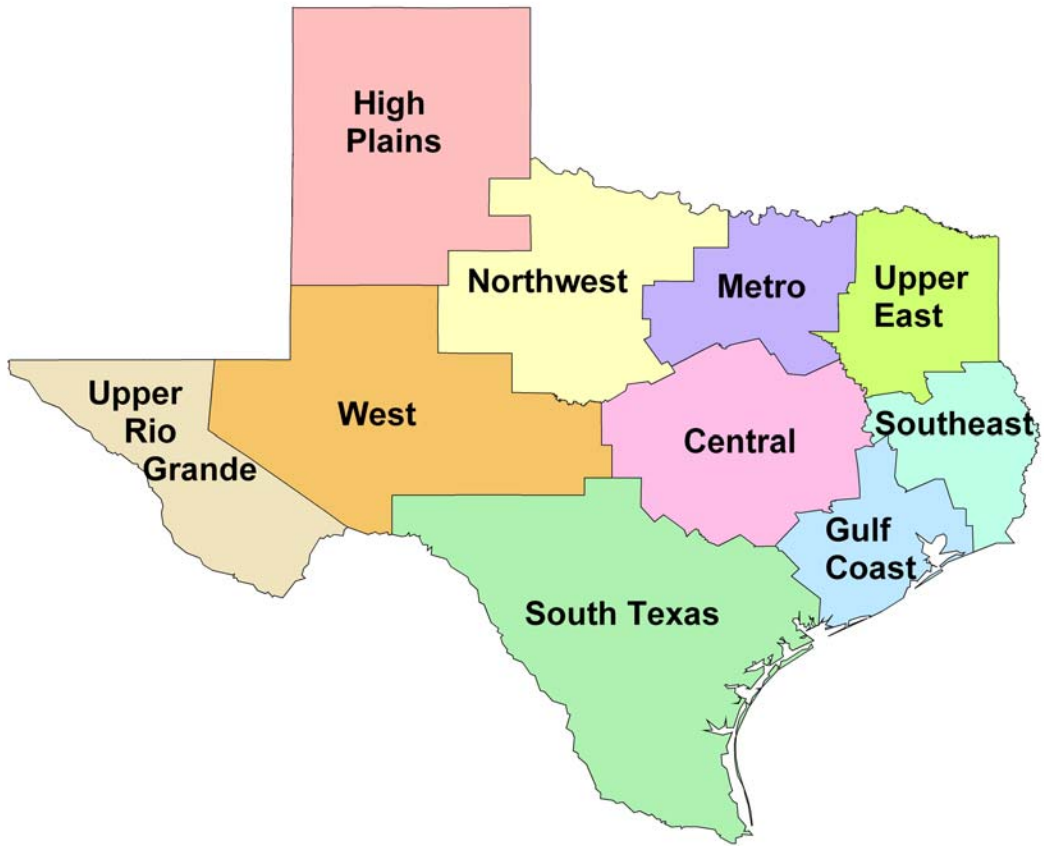
**Table 1**  
**Fall Headcount Participation Forecasts - Texas Institutions of Higher Education**

	Actual	Actual	Actual	Actual	Actual/Prel	Projections				
	2000	2005	2006	2007	2008	2009	2010	2011	2015	2020
Public Universities	414,626	484,999	491,140	497,195	509,137	514,582	520,130	524,299	549,903	572,876
Public Two-Year Colleges	447,998	566,071	575,712	587,244	617,597	630,410	635,949	640,889	668,322	718,054
Independent Universities	108,315	114,984	115,684	116,278	116,829	118,035	118,461	118,827	120,446	122,163
Total	970,939	1,166,054	1,182,536	1,200,717	1,243,563	1,263,027	1,274,540	1,284,015	1,338,672	1,413,093

**Table 2**  
**Forecasted Changes in Fall Headcount Participation**

	2000-2005		2005-2010		2010-2015		2015-2020	
	Number	Percent	Number	Percent	Number	Percent	Number	Percent
Public Universities	70,373	17.0%	35,131	7.2%	29,773	5.7%	22,973	4.2%
Public Two-Year Colleges	118,073	26.4%	69,878	12.3%	32,373	5.1%	49,732	7.4%
Independent Senior Colleges and Universities	6,669	6.2%	3,477	3.0%	1,985	1.7%	1,716	1.4%
Total	195,115	20.1%	108,486	9.3%	64,131	5.0%	74,421	5.6%

Figure 2  
Texas Higher Education Coordinating Board  
Ten Regions



**Table 3**  
**Participation Projections by Region**  
**Texas Public Institutions of Higher Education**

	Actual 2000	Actual 2005	Actual 2006	Actual 2007	Act/Prel 2008	Projections				
						2009	2010	2011	2015	2020
<b>Central Texas Region</b>										
Texas A&M University	44,026	44,578	45,380	46,542	48,039	48,000	48,000	48,000	48,000	48,000
Texas State University - San Marcos	22,423	27,129	27,485	28,121	29,105	29,350	30,400	30,800	32,400	33,700
The University of Texas at Austin	49,996	49,233	49,697	50,170	49,984	50,000	50,000	50,000	50,000	50,000
University Subtotal	116,445	120,940	122,562	124,833	127,128	127,350	128,400	128,800	130,400	131,700
Austin Community College	25,853	30,499	31,610	31,822	33,728	34,156	34,439	34,789	36,940	39,619
Blinn College	12,025	14,351	14,016	14,582	15,605	15,478	15,349	15,211	15,360	15,680
Central Texas College	6,650	8,704	7,365	8,290	9,481	9,454	9,471	9,480	9,651	10,069
Hill College	2,506	3,084	3,490	3,395	3,711	3,755	3,776	3,816	3,960	4,256
McLennan Community College	5,721	7,638	7,746	8,044	7,855	8,007	7,975	7,917	7,814	7,894
Temple College	3,381	3,897	4,279	4,787	5,178	5,192	5,206	5,203	5,317	5,732
TSTC Waco Campus	3,928	4,528	4,283	4,308	5,093	4,991	4,977	4,951	4,901	4,994
Two-Year Colleges Subtotal	60,064	72,701	72,789	75,228	80,651	81,031	81,193	81,367	83,942	88,244
<b>Central Texas Regional Totals</b>	<b>176,509</b>	<b>193,641</b>	<b>195,351</b>	<b>200,061</b>	<b>207,779</b>	<b>208,382</b>	<b>209,593</b>	<b>210,167</b>	<b>214,341</b>	<b>219,945</b>
<b>Gulf Coast Region</b>										
Prairie View A&M University	6,609	7,912	8,006	8,382	8,203	8,361	8,467	8,564	8,745	8,750
Sam Houston State University	12,348	15,308	15,893	16,400	16,612	16,723	16,784	16,817	16,754	16,818
Texas A&M University at Galveston	1,363	1,661	1,553	1,614	1,612	1,810	1,805	1,797	1,752	1,780
Texas Southern University	6,886	11,478	11,224	9,540	9,102	8,956	9,097	9,222	9,470	9,418
University of Houston	32,123	34,582	34,334	34,663	36,104	35,581	36,130	36,647	37,975	39,509
University of Houston-Clear Lake	7,580	7,826	7,706	7,522	7,658	7,521	7,593	7,656	7,898	8,098
University of Houston-Downtown	8,951	11,433	11,449	11,793	12,283	12,523	12,789	13,050	13,899	14,799
University Subtotal	75,860	90,200	90,165	89,914	91,574	91,475	92,665	93,754	96,493	99,172
Alvin Community College	3,531	3,828	3,983	4,091	4,348	4,508	4,575	4,645	4,897	5,326
Brazosport College	3,855	3,604	3,808	3,751	3,887	3,948	4,006	4,069	4,283	4,662

	Actual	Actual	Actual	Actual	Act/Prel	Projections				
	2000	2005	2006	2007	2008	2009	2010	2011	2015	2020
College of the Mainland Comm Coll District	3,159	3,992	3,834	3,521	3,561	3,608	3,638	3,656	3,745	3,944
Galveston College	2,245	2,215	2,113	2,044	2,229	2,280	2,311	2,335	2,431	2,574
Houston Community College	33,509	35,595	37,192	36,786	38,529	38,567	39,457	40,240	42,343	45,798
Lee College	6,170	4,576	5,268	5,734	5,852	5,982	6,023	6,059	6,178	6,398
Lone Star College System Cy-Fair College	0	9,799	10,772	11,751	12,401	12,956	12,953	12,944	15,894	19,636
Lone Star College System Kingwood College	4,568	6,837	6,986	7,330	7,421	7,590	7,625	7,665	7,791	8,277
Lone Star College System Montgomery College	5,316	7,971	8,155	8,798	9,141	9,645	9,962	10,279	11,316	12,567
Lone Star College System North Harris College	9,118	10,878	10,407	10,834	11,074	11,742	11,894	12,040	12,519	13,585
Lone Star College System Tomball College	5,902	7,600	7,749	8,132	8,483	8,688	8,700	8,706	9,203	10,053
San Jacinto College Central Campus	10,816	12,627	12,378	12,350	12,928	13,172	13,186	13,196	13,256	13,909
San Jacinto College North Campus	4,937	5,529	5,380	5,159	5,515	5,710	5,762	5,806	5,960	6,391
San Jacinto College South Campus	6,238	8,554	8,585	8,742	9,205	9,432	9,467	9,497	10,271	10,770
Wharton County Junior College	4,571	6,008	6,089	5,892	6,115	6,173	6,277	6,389	6,646	7,018
Two-Year Colleges Subtotal	103,935	129,613	132,699	134,915	140,689	144,000	145,836	147,526	156,733	170,907
<b>Gulf Coast Regional Totals</b>	<b>179,795</b>	<b>219,813</b>	<b>222,864</b>	<b>224,829</b>	<b>232,263</b>	<b>235,474</b>	<b>238,501</b>	<b>241,280</b>	<b>253,226</b>	<b>270,080</b>
<b>High Plains Region</b>										
Texas Tech University	24,199	27,940	27,996	28,260	28,422	28,436	28,355	28,219	28,202	28,237
West Texas A&M University	6,775	7,293	7,412	7,502	7,535	7,572	7,550	7,519	7,391	7,250
University Subtotal	30,974	35,233	35,408	35,762	35,957	36,008	35,905	35,738	35,594	35,487
Amarillo College	8,181	10,391	10,054	10,177	10,023	10,032	10,024	10,001	10,015	10,131
Clarendon College	1,001	1,116	1,099	1,117	1,239	1,233	1,211	1,188	1,130	1,110
Frank Phillips College	1,153	1,207	1,365	1,265	1,236	1,215	1,199	1,175	1,123	1,145
South Plains College	7,432	9,233	9,043	9,259	9,232	9,251	9,230	9,117	9,036	9,192
Two-Year Colleges Subtotal	17,767	21,947	21,561	21,818	21,730	21,732	21,664	21,481	21,304	21,578
<b>High Plains Regional Totals</b>	<b>48,741</b>	<b>57,180</b>	<b>56,969</b>	<b>57,580</b>	<b>57,687</b>	<b>57,740</b>	<b>57,569</b>	<b>57,218</b>	<b>56,898</b>	<b>57,065</b>
<b>Metroplex Region</b>										
Tarleton State University	7,545	9,140	9,464	9,460	9,634	9,726	9,759	9,765	9,733	9,793
Texas A&M University-Commerce	7,483	8,677	8,496	8,879	8,787	9,129	9,253	9,364	9,854	10,535
Texas Woman's University	8,404	11,326	11,479	11,838	12,200	12,600	13,167	13,418	14,524	16,100

	Actual	Actual	Actual	Actual	Act/Prel	Projections				
	2000	2005	2006	2007	2008	2009	2010	2011	2015	2020
The University of Texas at Arlington	20,424	25,216	24,825	24,888	25,084	25,140	25,548	25,946	27,358	29,239
The University of Texas at Dallas	10,945	14,399	14,523	14,556	14,943	15,569	15,801	16,056	17,237	19,144
University of North Texas	27,054	31,947	33,443	34,153	34,698	35,735	36,362	36,992	39,399	42,758
University Subtotal	81,855	100,705	102,230	103,774	105,346	107,900	109,889	111,540	118,105	127,569
Collin County Community College District	12,704	18,221	19,136	19,944	20,809	22,152	23,355	24,618	29,584	35,854
DCCCD - Brookhaven College	7,687	9,725	9,634	9,657	9,853	9,845	9,969	10,108	10,736	11,871
DCCCD - Cedar Valley College	2,799	4,300	4,357	4,477	4,987	4,994	5,016	5,034	5,179	5,376
DCCCD - Eastfield College	7,643	9,452	9,187	8,977	9,311	9,460	9,465	9,487	9,608	10,204
DCCCD - El Centro College	4,366	6,629	6,529	6,899	7,704	7,860	7,902	7,943	8,138	8,660
DCCCD - Mountain View College	4,949	6,140	6,766	6,462	6,450	6,696	6,761	6,833	7,110	7,785
DCCCD - North Lake College	6,764	8,623	8,830	9,090	9,697	9,700	9,746	9,806	10,091	10,862
DCCCD - Richland College	11,958	13,552	13,774	13,914	14,135	13,876	13,883	13,914	14,103	15,023
Grayson County College	3,260	3,715	3,775	3,717	4,122	4,284	4,283	4,273	4,314	4,519
Navarro College	3,989	6,359	7,358	7,467	8,128	8,349	8,379	8,425	8,630	9,374
North Central Texas College	4,794	6,967	7,335	7,400	8,040	8,217	8,463	8,714	9,751	11,108
TCCD - Northeast Campus	9,315	12,372	12,135	12,924	13,663	15,283	15,439	15,589	16,655	18,234
TCCD - Northwest Campus	4,199	7,356	7,546	8,431	9,517	10,251	10,371	10,488	10,941	11,760
TCCD - South Campus	7,062	9,885	9,431	10,007	10,625	11,329	11,505	11,681	12,346	13,383
TCCD - Southeast Campus	7,293	8,975	9,339	11,056	11,520	12,277	12,448	12,615	13,216	14,403
Weatherford College	2,751	4,437	4,379	4,478	4,761	4,853	4,891	4,923	5,016	5,205
Two-Year Colleges Subtotal	101,533	136,708	139,511	144,900	153,322	159,425	161,878	164,450	175,419	193,621
Metroplex Regional Totals	183,388	237,413	241,741	248,674	258,668	267,325	271,767	275,990	293,524	321,190
<b>Northwest Region</b>										
Midwestern State University	5,812	6,182	5,945	5,872	5,844	5,947	5,939	5,935	5,860	5,810
University Subtotal	5,812	6,182	5,945	5,872	5,844	5,947	5,939	5,935	5,860	5,810
Cisco Junior College	2,639	3,494	3,554	3,340	3,743	3,655	3,598	3,526	3,425	3,528
Ranger College	847	758	870	813	890	910	895	883	853	898
TSTC West Texas Campus	1,563	1,660	1,487	1,640	1,842	1,798	1,780	1,761	1,727	1,796
Vernon College	2,095	2,784	2,793	2,814	2,959	2,955	2,889	2,857	2,723	2,673

	Actual	Actual	Actual	Actual	Act/Prel	Projections				
	2000	2005	2006	2007	2008	2009	2010	2011	2015	2020
Western Texas College	1,176	1,756	1,976	2,095	2,170	2,121	2,093	2,069	1,984	2,015
Two-Year Colleges Subtotal	8,320	10,452	10,680	10,702	11,604	11,440	11,256	11,095	10,712	10,909
Northwest Regional Totals	14,132	16,634	16,625	16,574	17,448	17,387	17,195	17,030	16,572	16,719

### South Texas Region

Sul Ross State University Rio Grande College	828	1,006	948	941	939	928	947	968	1,030	1,045
Texas A&M International University	3,038	4,298	4,917	5,179	5,856	6,152	6,298	6,420	7,779	8,504
Texas A&M University-Corpus Christi	6,823	8,355	8,585	8,563	9,007	9,188	9,466	9,650	10,615	11,521
Texas A&M University-Kingsville	5,942	6,662	6,700	6,547	7,134	7,209	7,256	7,298	9,365	11,519
The University of Texas at Brownsville	3,157	4,759	4,917	5,953	6,432	6,397	6,490	6,569	7,810	9,433
The University of Texas at San Antonio	18,830	27,291	28,379	28,533	28,413	29,225	29,515	29,745	30,337	31,272
The University of Texas-Pan American	12,760	17,048	17,337	17,435	17,534	17,868	18,388	18,905	20,449	22,482
University of Houston-Victoria	1,698	2,491	2,652	2,784	3,174	3,203	3,263	3,323	3,599	3,942
University Subtotal	53,076	71,910	74,435	75,935	78,489	80,171	81,622	82,878	90,984	99,718

ACCD - Northeast Lakeview College	0	0	0	98	415	1,000	2,000	3,000	6,000	9,000
ACCD - Northwest Vista College	4,056	9,151	9,807	10,627	11,961	12,375	12,389	12,352	12,217	12,559
ACCD - Palo Alto College	6,370	8,065	8,036	8,021	7,829	7,941	7,996	8,027	8,126	8,509
ACCD - San Antonio College	20,490	21,555	21,750	21,439	21,766	21,834	21,966	22,026	22,262	22,962
ACCD - St. Philip's College	8,286	10,187	9,895	9,844	10,335	10,335	10,438	10,446	10,759	11,189
Coastal Bend College	3,026	3,353	3,235	3,113	3,510	3,306	3,277	3,260	3,192	3,302
Del Mar College	9,683	11,889	11,301	11,138	11,262	11,389	11,321	11,252	10,916	11,022
Laredo Community College	7,284	8,169	8,033	7,737	8,191	8,393	8,581	8,722	9,102	10,223
South Texas College	11,183	16,233	18,460	19,808	21,666	22,306	22,831	23,285	26,344	30,094
Southwest Texas Junior College	3,716	5,067	4,985	4,875	4,910	4,998	5,004	5,003	4,911	5,114
Texas Southmost College	7,245	10,517	13,200	14,055	13,490	14,232	14,295	14,294	15,798	18,030
TSTC Harlingen Campus	3,266	4,257	4,350	4,957	5,466	5,471	5,491	5,501	5,569	5,575
Victoria College, The	4,021	3,980	4,031	3,987	3,976	3,980	3,946	3,914	3,830	3,851
Two-Year Colleges Subtotal	88,626	112,423	117,083	119,699	124,777	127,558	129,536	131,082	139,026	151,431
South Texas Regional Totals	141,702	184,333	191,518	195,634	203,266	207,728	211,157	213,960	230,010	251,150

	Actual	Actual	Actual	Actual	Act/Prel	Projections				
	2000	2005	2006	2007	2008	2009	2010	2011	2015	2020
<b>Southeast Texas Region</b>										
Lamar University	8,568	10,523	9,867	10,213	13,280	13,273	13,198	13,136	14,593	15,094
Stephen F. Austin State University	11,453	11,290	11,633	11,486	11,869	11,939	11,937	11,920	11,754	11,790
University Subtotal	20,021	21,813	21,500	21,699	25,149	25,211	25,135	25,056	26,347	26,884
Angelina College	4,376	4,756	4,658	4,624	4,914	4,960	4,929	4,909	4,843	4,895
Lamar Institute of Technology	2,349	2,711	2,409	2,590	2,885	3,017	3,005	2,996	2,946	2,917
Lamar State College-Orange	1,939	2,132	2,011	2,005	2,147	2,178	2,157	2,135	2,042	1,956
Lamar State College-Port Arthur	2,508	2,501	2,387	2,279	1,985	2,035	2,026	2,020	1,997	2,018
Two-Year Colleges Subtotal	11,172	12,100	11,465	11,498	11,931	12,190	12,116	12,060	11,829	11,786
<b>Southeast Texas Regional Totals</b>	<b>31,193</b>	<b>33,913</b>	<b>32,965</b>	<b>33,197</b>	<b>37,080</b>	<b>37,401</b>	<b>37,251</b>	<b>37,115</b>	<b>38,176</b>	<b>38,670</b>
<b>Upper East Texas Region</b>										
Texas A&M University-Texarkana	1,195	1,549	1,625	1,605	1,625	1,653	1,656	1,661	1,876	2,002
The University of Texas at Tyler	3,592	5,746	5,926	6,137	6,117	6,221	6,230	6,243	6,191	6,217
University Subtotal	4,787	7,295	7,551	7,742	7,742	7,874	7,886	7,903	8,067	8,220
Kilgore College	3,872	4,815	4,697	5,135	5,477	5,408	5,355	5,311	5,197	5,327
Northeast Texas Community College	1,990	2,507	2,409	2,458	2,448	2,461	2,455	2,459	2,468	2,522
Panola College	1,422	1,922	1,868	1,884	1,980	1,963	1,928	1,891	1,826	1,851
Paris Junior College	2,936	4,264	4,309	4,286	4,733	4,651	4,623	4,601	4,570	4,782
Texarkana College	3,394	3,682	3,671	3,916	4,043	4,657	4,597	4,530	4,312	4,228
TSTC Marshall Campus	511	565	624	705	943	931	916	901	862	850
Trinity Valley Community College	4,588	5,658	5,609	5,569	5,831	5,871	5,889	5,923	6,065	6,367
Tyler Junior College	8,240	9,265	9,422	8,220	9,928	9,880	9,898	9,930	9,976	10,326
Two-Year Colleges Subtotal	26,953	32,678	32,609	32,173	35,383	35,822	35,662	35,545	35,276	36,254
<b>Upper East Texas Regional Totals</b>	<b>31,740</b>	<b>39,973</b>	<b>40,160</b>	<b>39,915</b>	<b>43,125</b>	<b>43,696</b>	<b>43,548</b>	<b>43,449</b>	<b>43,343</b>	<b>44,473</b>
<b>Upper Rio Grande Region</b>										
Sul Ross State University	2,010	1,918	1,829	1,765	1,841	1,860	1,869	1,879	1,877	1,873
The University of Texas at El Paso	15,224	19,257	19,842	20,155	20,458	21,042	21,172	21,254	26,980	27,299
University Subtotal	17,234	21,175	21,671	21,920	22,299	22,902	23,040	23,133	28,858	29,172

	Actual	Actual	Actual	Actual	Act/Prel	Projections				
	2000	2005	2006	2007	2008	2009	2010	2011	2015	2020
El Paso Community College District	17,747	24,239	23,801	22,567	23,477	23,703	23,817	23,853	23,538	24,183
Two-Year Colleges Subtotal	17,747	24,239	23,801	22,567	23,477	23,703	23,817	23,853	23,538	24,183
Upper Rio Grande Regional Totals	34,981	45,414	45,472	44,487	45,776	46,605	46,858	46,986	52,396	53,355
<b>West Texas Region</b>										
Angelo State University	6,290	6,140	6,211	6,185	6,113	6,045	5,960	5,878	5,558	5,495
The University of Texas of the Permian Basin	2,272	3,406	3,462	3,559	3,496	3,699	3,689	3,684	3,638	3,648
University Subtotal	8,562	9,546	9,673	9,744	9,609	9,744	9,649	9,562	9,197	9,143
Howard College	2,337	2,713	3,033	3,325	3,449	3,486	3,414	3,340	3,177	3,275
Midland College	4,841	5,584	5,798	5,720	5,784	5,878	5,799	5,719	5,507	5,631
Odessa College	4,568	4,788	4,571	4,580	4,687	4,630	4,565	4,522	4,378	4,524
Southwest Collegiate Institute for the Deaf	135	125	112	119	113	111	112	112	109	107
Two-Year Colleges Subtotal	11,881	13,210	13,514	13,744	14,033	14,105	13,889	13,692	13,171	13,537
West Texas Regional Totals	20,443	22,756	23,187	23,488	23,642	23,849	23,538	23,254	22,368	22,680
Public Total	862,624	1,051,070	1,066,852	1,084,439	1,126,734	1,145,588	1,156,977	1,166,450	1,220,852	1,295,327



**Table 4**  
**Fall Headcount Participation Forecasts—Texas Public Universities**

	Actual	Actual	Actual	Actual	Act/Prel	Projections				
	2000	2005	2006	2007	2008	2009	2010	2011	2015	2020
Angelo State University	6,290	6,140	6,211	6,185	6,113	6,045	5,960	5,878	5,558	5,495
Lamar University	8,568	10,523	9,867	10,213	13,280	13,273	13,198	13,136	14,593	15,094
Midwestern State University	5,812	6,182	5,945	5,872	5,844	5,947	5,939	5,935	5,860	5,810
Prairie View A&M University	6,609	7,912	8,006	8,382	8,203	8,361	8,467	8,564	8,745	8,750
Sam Houston State University	12,348	15,308	15,893	16,400	16,612	16,723	16,784	16,817	16,754	16,818
Stephen F. Austin State University	11,453	11,290	11,633	11,486	11,869	11,939	11,937	11,920	11,754	11,790
Sul Ross State University	2,010	1,918	1,829	1,765	1,841	1,860	1,869	1,879	1,877	1,873
Sul Ross State University Rio Grande College	828	1,006	948	941	939	928	947	968	1,030	1,045
Tarleton State University	7,545	9,140	9,464	9,460	9,634	9,726	9,759	9,765	9,733	9,793
Texas A&M International University	3,038	4,298	4,917	5,179	5,856	6,152	6,298	6,420	7,779	8,504
Texas A&M University	44,026	44,578	45,380	46,542	48,039	48,000	48,000	48,000	48,000	48,000
Texas A&M University at Galveston	1,363	1,661	1,553	1,614	1,612	1,810	1,805	1,797	1,752	1,780
Texas A&M University-Commerce	7,483	8,677	8,496	8,879	8,787	9,129	9,253	9,364	9,854	10,535
Texas A&M University-Corpus Christi	6,823	8,355	8,585	8,563	9,007	9,188	9,466	9,650	10,615	11,521
Texas A&M University-Kingsville	5,942	6,662	6,700	6,547	7,134	7,209	7,256	7,298	9,365	11,519
Texas A&M University-Texarkana	1,195	1,549	1,625	1,605	1,625	1,653	1,656	1,661	1,876	2,002
Texas Southern University	6,886	11,478	11,224	9,540	9,102	8,956	9,097	9,222	9,470	9,418
Texas State University - San Marcos	22,423	27,129	27,485	28,121	29,105	29,350	30,400	30,800	32,400	33,700
Texas Tech University	24,199	27,940	27,996	28,260	28,422	28,436	28,355	28,219	28,202	28,237
Texas Woman's University	8,404	11,326	11,479	11,838	12,200	12,600	13,167	13,418	14,524	16,100
The University of Texas at Arlington	20,424	25,216	24,825	24,888	25,084	25,140	25,548	25,946	27,358	29,239
The University of Texas at Austin	49,996	49,233	49,697	50,170	49,984	50,000	50,000	50,000	50,000	50,000
The University of Texas at Brownsville	3,157	4,759	4,917	5,953	6,432	6,397	6,490	6,569	7,810	9,433
The University of Texas at Dallas	10,945	14,399	14,523	14,556	14,943	15,569	15,801	16,056	17,237	19,144
The University of Texas at El Paso	15,224	19,257	19,842	20,155	20,458	21,042	21,172	21,254	26,980	27,299
The University of Texas at San Antonio	18,830	27,291	28,379	28,533	28,413	29,225	29,515	29,745	30,337	31,272
The University of Texas at Tyler	3,592	5,746	5,926	6,137	6,117	6,221	6,230	6,243	6,191	6,217
The University of Texas of the Permian Basin	2,272	3,406	3,462	3,559	3,496	3,699	3,689	3,684	3,638	3,648
The University of Texas-Pan American	12,760	17,048	17,337	17,435	17,534	17,868	18,388	18,905	20,449	22,482
University of Houston	32,123	34,582	34,334	34,663	36,104	35,581	36,130	36,647	37,975	39,509
University of Houston-Clear Lake	7,580	7,826	7,706	7,522	7,658	7,521	7,593	7,656	7,898	8,098

	Actual	Actual	Actual	Actual	Act/Prel	Projections				
	2000	2005	2006	2007	2008	2009	2010	2011	2015	2020
University of Houston-Downtown	8,951	11,433	11,449	11,793	12,283	12,523	12,789	13,050	13,899	14,799
University of Houston-Victoria	1,698	2,491	2,652	2,784	3,174	3,203	3,263	3,323	3,599	3,942
University of North Texas	27,054	31,947	33,443	34,153	34,698	35,735	36,362	36,992	39,399	42,758
West Texas A&M University	6,775	7,293	7,412	7,502	7,535	7,572	7,550	7,519	7,391	7,250
<b>University Statewide Totals</b>	<b>414,626</b>	<b>484,999</b>	<b>491,140</b>	<b>497,195</b>	<b>509,137</b>	<b>514,582</b>	<b>520,130</b>	<b>524,299</b>	<b>549,903</b>	<b>572,876</b>

**Table 5**  
**Forecasted Changes in Fall Headcount Participation—Public Universities**

	2000-2005		2005-2010		2010-2015		2015-2020	
	Number	Percent	Number	Percent	Number	Percent	Number	Percent
Angelo State University	(150)	-2.4%	(180)	-2.9%	(402)	-6.7%	(63)	-1.1%
Lamar University	1,955	22.8%	2,675	25.4%	1,395	10.6%	501	3.4%
Midwestern State University	370	6.4%	(243)	-3.9%	(78)	-1.3%	(50)	-0.9%
Prairie View A&M University	1,303	19.7%	555	7.0%	277	3.3%	5	0.1%
Sam Houston State University	2,960	24.0%	1,476	9.6%	(30)	-0.2%	65	0.4%
Stephen F. Austin State University	(163)	-1.4%	647	5.7%	(183)	-1.5%	36	0.3%
Sul Ross State University	(92)	-4.6%	(49)	-2.6%	9	0.5%	(5)	-0.3%
Sul Ross State University Rio Grande College	178	21.5%	(59)	-5.9%	83	8.8%	15	1.4%
Tarleton State University	1,595	21.1%	619	6.8%	(25)	-0.3%	59	0.6%
Texas A&M International University	1,260	41.5%	2,000	46.5%	1,481	23.5%	726	9.3%
Texas A&M University	552	1.3%	3,422	7.7%	0	0.0%	0	0.0%
Texas A&M University at Galveston	298	21.9%	144	8.7%	(53)	-2.9%	28	1.6%
Texas A&M University-Commerce	1,194	16.0%	576	6.6%	601	6.5%	681	6.9%
Texas A&M University-Corpus Christi	1,532	22.5%	1,111	13.3%	1,149	12.1%	906	8.5%
Texas A&M University-Kingsville	720	12.1%	594	8.9%	2,109	29.1%	2,155	23.0%
Texas A&M University-Texarkana	354	29.6%	107	6.9%	220	13.3%	126	6.7%
Texas Southern University	4,592	66.7%	(2,381)	-20.7%	373	4.1%	(52)	-0.6%
Texas State University - San Marcos	4,706	21.0%	3,271	12.1%	1,999	6.6%	1,301	4.0%
Texas Tech University	3,741	15.5%	415	1.5%	(153)	-0.5%	34	0.1%
Texas Woman's University	2,922	34.8%	1,841	16.3%	1,358	10.3%	1,576	10.8%
The University of Texas at Arlington	4,792	23.5%	332	1.3%	1,810	7.1%	1,881	6.9%
The University of Texas at Austin	(763)	-1.5%	767	1.6%	0	0.0%	0	0.0%
The University of Texas at Brownsville	1,602	50.7%	1,731	36.4%	1,320	20.3%	1,623	20.8%
The University of Texas at Dallas	3,454	31.6%	1,402	9.7%	1,436	9.1%	1,908	11.1%
The University of Texas at El Paso	4,033	26.5%	1,915	9.9%	5,809	27.4%	319	1.2%
The University of Texas at San Antonio	8,461	44.9%	2,224	8.1%	823	2.8%	934	3.1%
The University of Texas at Tyler	2,154	60.0%	484	8.4%	(40)	-0.6%	27	0.4%
The University of Texas of the Permian Basin	1,134	49.9%	283	8.3%	(51)	-1.4%	10	0.3%
The University of Texas-Pan American	4,288	33.6%	1,340	7.9%	2,061	11.2%	2,033	9.9%
University of Houston	2,459	7.7%	1,548	4.5%	1,845	5.1%	1,534	4.0%
University of Houston-Clear Lake	246	3.2%	(233)	-3.0%	305	4.0%	201	2.5%

	2000-2005		2005-2010		2010-2015		2015-2020	
	Number	Percent	Number	Percent	Number	Percent	Number	Percent
University of Houston-Downtown	2,482	27.7%	1,356	11.9%	1,110	8.7%	900	6.5%
University of Houston-Victoria	793	46.7%	772	31.0%	336	10.3%	343	9.5%
University of North Texas	4,893	18.1%	4,415	13.8%	3,037	8.4%	3,359	8.5%
West Texas A&M University	518	7.6%	257	3.5%	(159)	-2.1%	(141)	-1.9%
<b>University Statewide Totals</b>	<b>70,373</b>	<b>17.0%</b>	<b>35,131</b>	<b>7.2%</b>	<b>29,773</b>	<b>5.7%</b>	<b>22,973</b>	<b>4.2%</b>

**Table 6**  
**Fall Headcount Participation Forecast—Two-Year Colleges**

	Actual	Actual	Actual	Actual	Act/Prel	Projections				
	2000	2005	2006	2007	2008	2009	2010	2011	2015	2020
ACCD - Northeast Lakeview College	0	0	0	98	415	1,000	2,000	3,000	6,000	9,000
ACCD - Northwest Vista College	4,056	9,151	9,807	10,627	11,961	12,375	12,389	12,352	12,217	12,559
ACCD - Palo Alto College	6,370	8,065	8,036	8,021	7,829	7,941	7,996	8,027	8,126	8,509
ACCD - San Antonio College	20,490	21,555	21,750	21,439	21,766	21,834	21,966	22,026	22,262	22,962
ACCD - St. Philip's College	8,286	10,187	9,895	9,844	10,335	10,335	10,438	10,446	10,759	11,189
Alvin Community College	3,531	3,828	3,983	4,091	4,348	4,508	4,575	4,645	4,897	5,326
Amarillo College	8,181	10,391	10,054	10,177	10,023	10,032	10,024	10,001	10,015	10,131
Angelina College	4,376	4,756	4,658	4,624	4,914	4,960	4,929	4,909	4,843	4,895
Austin Community College	25,853	30,499	31,610	31,822	33,728	34,156	34,439	34,789	36,940	39,619
Blinn College	12,025	14,351	14,016	14,582	15,605	15,478	15,349	15,211	15,360	15,680
Brazosport College	3,855	3,604	3,808	3,751	3,887	3,948	4,006	4,069	4,283	4,662
Central Texas College District	6,650	8,704	7,365	8,290	9,481	9,454	9,471	9,480	9,651	10,069
Cisco Junior College	2,639	3,494	3,554	3,340	3,743	3,655	3,598	3,526	3,425	3,528
Clarendon College	1,001	1,116	1,099	1,117	1,239	1,233	1,211	1,188	1,130	1,110
Coastal Bend College	3,026	3,353	3,235	3,113	3,510	3,306	3,277	3,260	3,192	3,302
College of the Mainland Community College District	3,159	3,992	3,834	3,521	3,561	3,608	3,638	3,656	3,745	3,944
Collin County Community College District	12,704	18,221	19,136	19,944	20,809	21,557	22,457	23,357	26,957	31,457
DCCCD - Brookhaven College	7,687	9,725	9,634	9,657	9,853	9,845	9,969	10,108	10,736	11,871
DCCCD - Cedar Valley College	2,799	4,300	4,357	4,477	4,987	4,994	5,016	5,034	5,179	5,376
DCCCD - Eastfield College	7,643	9,452	9,187	8,977	9,311	9,460	9,465	9,487	9,608	10,204
DCCCD - El Centro College	4,366	6,629	6,529	6,899	7,704	7,860	7,902	7,943	8,138	8,660
DCCCD - Mountain View College	4,949	6,140	6,766	6,462	6,450	6,696	6,761	6,833	7,110	7,785
DCCCD - North Lake College	6,764	8,623	8,830	9,090	9,697	9,700	9,746	9,806	10,091	10,862
DCCCD - Richland College	11,958	13,552	13,774	13,914	14,135	13,876	13,883	13,914	14,103	15,023
Del Mar College	9,683	11,889	11,301	11,138	11,262	11,389	11,321	11,252	10,916	11,022
El Paso Community College District	17,747	24,239	23,801	22,567	23,477	23,703	23,817	23,853	23,538	24,183
Frank Phillips College	1,153	1,207	1,365	1,265	1,236	1,215	1,199	1,175	1,123	1,145
Galveston College	2,245	2,215	2,113	2,044	2,229	2,280	2,311	2,335	2,431	2,574
Grayson County College	3,260	3,715	3,775	3,717	4,122	4,284	4,283	4,273	4,314	4,519
Hill College	2,506	3,084	3,490	3,395	3,711	3,755	3,776	3,816	3,960	4,256
Houston Community College System	33,509	35,595	37,192	36,786	38,529	38,567	39,457	40,240	42,343	45,798

	Actual	Actual	Actual	Actual	Act/Prel	Projections				
	2000	2005	2006	2007	2008	2009	2010	2011	2015	2020
Howard College	2,337	2,713	3,033	3,325	3,449	3,486	3,414	3,340	3,177	3,275
Kilgore College	3,872	4,815	4,697	5,135	5,477	5,408	5,355	5,311	5,197	5,327
Lamar Institute of Technology	2,349	2,711	2,409	2,590	2,885	3,017	3,005	2,996	2,946	2,917
Lamar State College-Orange	1,939	2,132	2,011	2,005	2,147	2,178	2,157	2,135	2,042	1,956
Lamar State College-Port Arthur	2,508	2,501	2,387	2,279	1,985	2,035	2,026	2,020	1,997	2,018
Laredo Community College	7,284	8,169	8,033	7,737	8,191	8,393	8,581	8,722	9,102	10,223
Lee College	6,170	4,576	5,268	5,734	5,852	5,982	6,023	6,059	6,178	6,398
Lone Star College System Cy-Fair College	0	9,799	10,772	11,751	12,401	12,956	12,953	12,944	15,894	19,636
Lone Star College System Kingwood College	4,568	6,837	6,986	7,330	7,421	7,590	7,625	7,665	7,791	8,277
Lone Star College System Montgomery College	5,316	7,971	8,155	8,798	9,141	9,645	9,962	10,279	11,316	12,567
Lone Star College System North Harris College	9,118	10,878	10,407	10,834	11,074	11,742	11,894	12,040	12,519	13,585
Lone Star College System Tomball College	5,902	7,600	7,749	8,132	8,483	8,688	8,700	8,706	9,203	10,053
McLennan Community College	5,721	7,638	7,746	8,044	7,855	8,007	7,975	7,917	7,814	7,894
Midland College	4,841	5,584	5,798	5,720	5,784	5,878	5,799	5,719	5,507	5,631
Navarro College	3,989	6,359	7,358	7,467	8,128	8,349	8,379	8,425	8,630	9,374
North Central Texas Community College District	4,794	6,967	7,335	7,400	8,040	8,217	8,463	8,714	9,751	11,108
Northeast Texas Community College	1,990	2,507	2,409	2,458	2,448	2,461	2,455	2,459	2,468	2,522
Odessa College	4,568	4,788	4,571	4,580	4,687	4,630	4,565	4,522	4,378	4,524
Panola College	1,422	1,922	1,868	1,884	1,980	1,963	1,928	1,891	1,826	1,851
Paris Junior College	2,936	4,264	4,309	4,286	4,733	4,651	4,623	4,601	4,570	4,782
Ranger College	847	758	870	813	890	910	895	883	853	898
San Jacinto College Central Campus	10,816	12,627	12,378	12,350	12,928	13,172	13,186	13,196	13,256	13,909
San Jacinto College North Campus	4,937	5,529	5,380	5,159	5,515	5,710	5,762	5,806	5,960	6,391
San Jacinto College South Campus	6,238	8,554	8,585	8,742	9,205	9,432	9,467	9,497	10,271	10,770
South Plains College	7,432	9,233	9,043	9,259	9,232	9,251	9,230	9,117	9,036	9,192
South Texas College	11,183	16,233	18,460	19,808	21,666	22,306	22,831	23,285	26,344	30,094
Southwest Collegiate Institute for the Deaf	135	125	112	119	113	111	112	112	109	107
Southwest Texas Junior College	3,716	5,067	4,985	4,875	4,910	4,998	5,004	5,003	4,911	5,114
TCCD - Northeast Campus	9,315	12,372	12,135	12,924	13,663	15,283	15,439	15,589	16,655	18,234
TCCD - Northwest Campus	4,199	7,356	7,546	8,431	9,517	10,251	10,371	10,488	10,941	11,760
TCCD - South Campus	7,062	9,885	9,431	10,007	10,625	11,329	11,505	11,681	12,346	13,383
TCCD - Southeast Campus	7,293	8,975	9,339	11,056	11,520	12,277	12,448	12,615	13,216	14,403
Temple College	3,381	3,897	4,279	4,787	5,178	5,192	5,206	5,203	5,317	5,732
Texarkana College	3,394	3,682	3,671	3,916	4,043	4,657	4,597	4,530	4,312	4,228

	Actual	Actual	Actual	Actual	Act/Prel	Projections				
	2000	2005	2006	2007	2008	2009	2010	2011	2015	2020
Texas Southmost College	7,245	10,517	13,200	14,055	13,490	14,232	14,295	14,294	15,798	18,030
Trinity Valley Community College	4,588	5,658	5,609	5,569	5,831	5,871	5,889	5,923	6,065	6,367
TSTC Harlingen Campus	3,266	4,257	4,350	4,957	5,466	5,471	5,491	5,501	5,569	5,575
TSTC Marshall Campus	511	565	624	705	943	931	916	901	862	850
TSTC Waco Campus	3,928	4,528	4,283	4,308	5,093	4,991	4,977	4,951	4,901	4,994
TSTC West Texas Campus	1,563	1,660	1,487	1,640	1,842	1,798	1,780	1,761	1,727	1,796
Tyler Junior College	8,240	9,265	9,422	8,220	9,928	9,880	9,898	9,930	9,976	10,326
Vernon College	2,095	2,784	2,793	2,814	2,959	2,955	2,889	2,857	2,723	2,673
Victoria College, The	4,021	3,980	4,031	3,987	3,976	3,980	3,946	3,914	3,830	3,851
Weatherford College	2,751	4,437	4,379	4,478	4,761	4,853	4,891	4,923	5,016	5,205
Western Texas College	1,176	1,756	1,976	2,095	2,170	2,121	2,093	2,069	1,984	2,015
Wharton County Junior College	4,571	6,008	6,089	5,892	6,115	6,173	6,277	6,389	6,646	7,018
<b>Two-Year Colleges Statewide Totals</b>	<b>447,998</b>	<b>566,071</b>	<b>575,712</b>	<b>587,244</b>	<b>617,597</b>	<b>630,410</b>	<b>635,949</b>	<b>640,889</b>	<b>668,322</b>	<b>718,054</b>

**Table 7**  
**Forecasted Changes in Fall Headcount Participation—Public Two-Year Colleges**

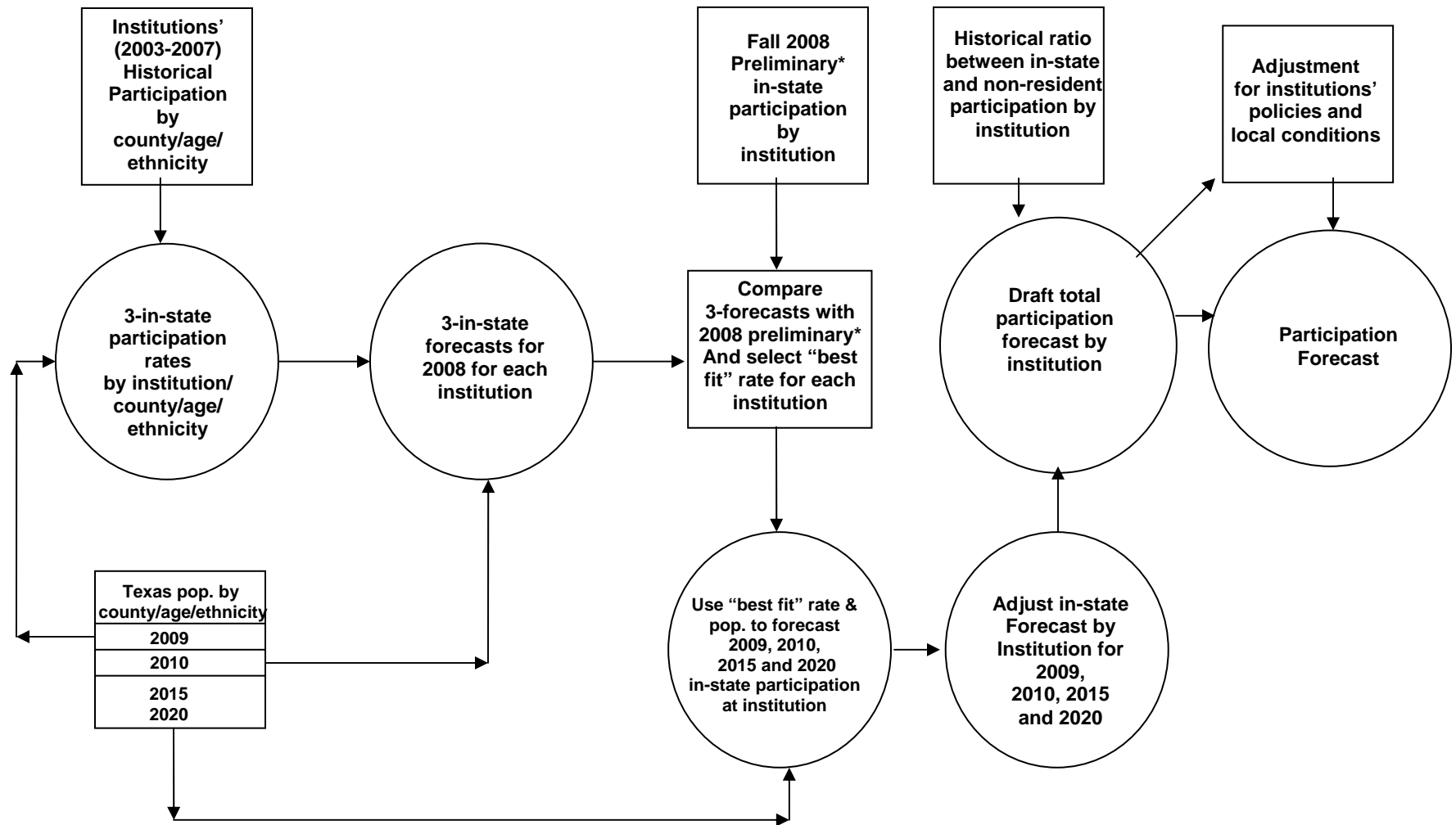
	2000-2005		2005-2010		2010-2015		2015-2020	
	Number	Percent	Number	Percent	Number	Percent	Number	Percent
ACCD - Northeast Lakeview College	0	N/A	2,000	N/A	4,000	200.0%	3,000	50.0%
ACCD - Northwest Vista College	5,095	125.6%	3,238	35.4%	(172)	-1.4%	341	2.8%
ACCD - Palo Alto College	1,695	26.6%	(69)	-0.9%	130	1.6%	382	4.7%
ACCD - San Antonio College	1,065	5.2%	411	1.9%	296	1.3%	700	3.1%
ACCD - St. Philip's College	1,901	22.9%	251	2.5%	321	3.1%	429	4.0%
Alvin Community College	297	8.4%	747	19.5%	322	7.0%	429	8.8%
Amarillo College	2,210	27.0%	(367)	-3.5%	(9)	-0.1%	115	1.2%
Angelina College	380	8.7%	173	3.6%	(85)	-1.7%	52	1.1%
Austin Community College	4,646	18.0%	3,940	12.9%	2,501	7.3%	2,679	7.3%
Blinn College	2,326	19.3%	998	7.0%	11	0.1%	319	2.1%
Brazosport College	(251)	-6.5%	402	11.1%	277	6.9%	379	8.8%
Central Texas College District	2,054	30.9%	767	8.8%	180	1.9%	418	4.3%
Cisco Junior College	855	32.4%	104	3.0%	(173)	-4.8%	102	3.0%
Clarendon College	115	11.5%	95	8.5%	(81)	-6.7%	(20)	-1.8%
Coastal Bend College	327	10.8%	(76)	-2.3%	(85)	-2.6%	111	3.5%
College of the Mainland Community College District	833	26.4%	(354)	-8.9%	107	2.9%	199	5.3%
Collin County Community College District	5,517	43.4%	4,236	23.3%	4,500	20.0%	4,500	16.7%
DCCCD - Brookhaven College	2,038	26.5%	244	2.5%	767	7.7%	1,135	10.6%
DCCCD - Cedar Valley College	1,501	53.6%	716	16.7%	162	3.2%	198	3.8%
DCCCD - Eastfield College	1,809	23.7%	13	0.1%	143	1.5%	595	6.2%
DCCCD - El Centro College	2,263	51.8%	1,273	19.2%	236	3.0%	522	6.4%
DCCCD - Mountain View College	1,191	24.1%	621	10.1%	349	5.2%	675	9.5%
DCCCD - North Lake College	1,859	27.5%	1,123	13.0%	345	3.5%	771	7.6%
DCCCD - Richland College	1,594	13.3%	331	2.4%	219	1.6%	920	6.5%
Del Mar College	2,206	22.8%	(568)	-4.8%	(404)	-3.6%	106	1.0%
El Paso Community College District	6,492	36.6%	(422)	-1.7%	(279)	-1.2%	645	2.7%
Frank Phillips College	54	4.7%	(8)	-0.7%	(75)	-6.3%	22	1.9%
Galveston College	(30)	-1.3%	96	4.3%	121	5.2%	143	5.9%
Grayson County College	455	14.0%	568	15.3%	31	0.7%	205	4.7%
Hill College	578	23.1%	692	22.4%	184	4.9%	297	7.5%
Houston Community College System	2,086	6.2%	3,862	10.8%	2,886	7.3%	3,455	8.2%



	2000-2005		2005-2010		2010-2015		2015-2020	
	Number	Percent	Number	Percent	Number	Percent	Number	Percent
Howard College	376	16.1%	701	25.8%	(236)	-6.9%	98	3.1%
Kilgore College	943	24.4%	540	11.2%	(158)	-2.9%	130	2.5%
Lamar Institute of Technology	362	15.4%	294	10.8%	(59)	-2.0%	(29)	-1.0%
Lamar State College-Orange	193	10.0%	25	1.2%	(114)	-5.3%	(86)	-4.2%
Lamar State College-Port Arthur	(7)	-0.3%	(475)	-19.0%	(29)	-1.4%	20	1.0%
Laredo Community College	885	12.1%	412	5.0%	521	6.1%	1,121	12.3%
Lee College	(1,594)	-25.8%	1,447	31.6%	154	2.6%	220	3.6%
Lone Star College System Cy-Fair College	9,799	N/A	3,154	32.2%	2,941	22.7%	3,742	23.5%
Lone Star College System Kingwood College	2,269	49.7%	788	11.5%	166	2.2%	485	6.2%
Lone Star College System Montgomery College	2,655	49.9%	1,991	25.0%	1,354	13.6%	1,251	11.1%
Lone Star College System North Harris College	1,760	19.3%	1,016	9.3%	625	5.3%	1,066	8.5%
Lone Star College System Tomball College	1,698	28.8%	1,100	14.5%	503	5.8%	850	9.2%
McLennan Community College	1,917	33.5%	337	4.4%	(162)	-2.0%	81	1.0%
Midland College	743	15.3%	215	3.8%	(292)	-5.0%	124	2.3%
Navarro College	2,370	59.4%	2,020	31.8%	251	3.0%	743	8.6%
North Central Texas Community College District	2,173	45.3%	1,496	21.5%	1,289	15.2%	1,356	13.9%
Northeast Texas Community College	517	26.0%	(52)	-2.1%	13	0.5%	54	2.2%
Odessa College	220	4.8%	(223)	-4.7%	(188)	-4.1%	147	3.3%
Panola College	500	35.2%	6	0.3%	(102)	-5.3%	25	1.4%
Paris Junior College	1,328	45.2%	359	8.4%	(53)	-1.1%	212	4.6%
Ranger College	(89)	-10.5%	137	18.1%	(42)	-4.7%	45	5.3%
San Jacinto College Central Campus	1,811	16.7%	559	4.4%	70	0.5%	653	4.9%
San Jacinto College North Campus	592	12.0%	233	4.2%	198	3.4%	431	7.2%
San Jacinto College South Campus	2,316	37.1%	913	10.7%	804	8.5%	500	4.9%
South Plains College	1,801	24.2%	(3)	0.0%	(194)	-2.1%	156	1.7%
South Texas College	5,050	45.2%	6,598	40.6%	3,513	15.4%	3,751	14.2%
Southwest Collegiate Institute for the Deaf	(10)	-7.4%	(13)	-10.7%	(2)	-2.0%	(2)	-1.8%
Southwest Texas Junior College	1,351	36.4%	(63)	-1.2%	(94)	-1.9%	203	4.1%
TCCD - Northeast Campus	3,057	32.8%	3,067	24.8%	1,215	7.9%	1,580	9.5%
TCCD - Northwest Campus	3,157	75.2%	3,015	41.0%	570	5.5%	819	7.5%
TCCD - South Campus	2,823	40.0%	1,620	16.4%	841	7.3%	1,037	8.4%
TCCD - Southeast Campus	1,682	23.1%	3,473	38.7%	767	6.2%	1,187	9.0%
Temple College	516	15.3%	1,309	33.6%	111	2.1%	415	7.8%
Texarkana College	288	8.5%	915	24.9%	(285)	-6.2%	(84)	-2.0%

	2000-2005		2005-2010		2010-2015		2015-2020	
	Number	Percent	Number	Percent	Number	Percent	Number	Percent
Texas Southmost College	3,272	45.2%	3,778	35.9%	1,503	10.5%	2,232	14.1%
Trinity Valley Community College	1,070	23.3%	231	4.1%	176	3.0%	302	5.0%
TSTC Harlingen Campus	991	30.3%	1,234	29.0%	77	1.4%	6	0.1%
TSTC Marshall Campus	54	10.6%	351	62.1%	(55)	-6.0%	(12)	-1.4%
TSTC Waco Campus	600	15.3%	449	9.9%	(76)	-1.5%	94	1.9%
TSTC West Texas Campus	97	6.2%	120	7.3%	(54)	-3.0%	69	4.0%
Tyler Junior College	1,025	12.4%	633	6.8%	78	0.8%	350	3.5%
Vernon College	689	32.9%	105	3.8%	(166)	-5.8%	(50)	-1.9%
Victoria College, The	(41)	-1.0%	(34)	-0.9%	(116)	-2.9%	21	0.6%
Weatherford College	1,686	61.3%	454	10.2%	125	2.5%	190	3.8%
Western Texas College	580	49.3%	337	19.2%	(110)	-5.2%	31	1.6%
Wharton County Junior College	1,437	31.4%	269	4.5%	369	5.9%	371	5.6%
<b>Two-Year Colleges Statewide Totals</b>	<b>118,073</b>	<b>26.4%</b>	<b>69,878</b>	<b>12.3%</b>	<b>32,373</b>	<b>5.1%</b>	<b>49,732</b>	<b>7.4%</b>

Figure 3  
 Participation Forecast Development Process  
 Texas Higher Education Coordinating Board



\*Certified fall 2008 enrollment was used if available.

## Texas Public College and University Participation Forecast Methodology

Participation forecasts were developed for each public college and university. Aggregate participation forecasts for the 35 public universities, the 50 public community college districts, four public technical colleges, and three state colleges were determined by examining institutional fall headcount enrollments. The forecast methodology used five years of age- and racial/ethnic-specific historical public higher education participation for each Texas county. These participation data were combined with age- and racial/ethnic-specific population projection data. (See Figure 3.) The individual forecasts were produced using multiple regression analysis techniques and, in a few instances, were modified using documented adjustment factors submitted by individual institutions. A general description of the forecast steps follows:

- For in-state student participation, five-years (2003-2007) of participation by students from each county was subdivided into age groups and racial/ethnic groups (Hispanic, African American, white, and other) at each institution. These data were matched with county population estimates to develop three alternative, age-specific, in-state participation rates for each of the four racial/ethnic groups in each of the 254 counties. The three alternative rates were applied to 2008 population estimates to derive three alternative in-state fall 2008 participation levels for each institution.
- Each institution's three alternative forecasts were compared with its certified (if available) or preliminary in-state participation for fall 2008 and with past participation trends. The forecast rate chosen (called "best fit") was that closest to the actual or preliminary enrollment. The "best fit" participation was adjusted using a multiplier, if necessary, to calculate a rate within +/- 3 percent of the in-state headcount.
- The participation rate alternative, and possibly an adjustment multiplier, that produced the "best fit" for each institution were applied to projected population by county/age/ethnic data for the years 2008, 2009, 2010, 2015, and 2020 to obtain a forecast of in-state participation for each institution. The resulting forecast was based on that fixed participation rate for the entire forecast period.
- Non-Texas resident participation, which includes both out-of-state and foreign students, was determined by examining the five-year record (2003-2007) and computing a ratio of nonresident to in-state students for each institution. These historical data were compared with the certified (if available) or preliminary fall 2008 institutional reports of nonresidential enrollments. The "best fit" ratio was used to compute nonresident participation.
- The calculated in-state and nonresident participation for each institution was combined to obtain a draft total participation forecast for the years 2009, 2010, 2015, and 2020.
- An adjustment was made to the draft total participation for some institutions based on known enrollment management policies. Also, the draft forecast was

sent to each institution for review and response prior to final publication. Based on conditions unique to specific institutions which could not be accounted for in the methodology, adjustments may have been made. The accuracy of the past forecasts was also taken into consideration when evaluating institutional adjustment suggestions.

#### Historical Participation

Tables 8, 9, 10, and 11 provide recent participation data. Data in these tables present in-state and nonresident enrollments at all public universities and public two-year colleges statewide by age and racial/ethnic group. This same participation information is available at the county level for each of these public institutions. Between 2000 and 2008, enrollment increased at public universities by 94,500 students (22.8 percent). At public community and technical colleges, enrollment increases totaled 169,600 students, or 37.9 percent.

At both types of institutions, increases have been greater for Hispanics than for African American, white and other students. Nevertheless, in 2008, white students made up 50.3 percent of the enrollment at public universities and 45.3 percent at public two-year colleges. Texas residents comprised 90.3 percent of all students at public universities and 95.2 percent at public two-year colleges.

**Table 8**  
**Fall In-State Participation by Age and Race/Ethnicity—Public Universities**

Year	Age 15-19	Age 20-24	Age 25-29	Age 30-34	Age 35-39	Age 40-Up	All Ages
<b>2003</b>							
White	58,771	113,318	29,079	15,087	9,074	20,986	246,320
African American	13,260	19,428	5,787	3,680	2,198	3,937	48,291
Hispanic	24,214	40,750	14,998	7,599	4,071	5,808	97,440
Other	8,637	14,695	4,177	2,002	1,031	1,497	32,046
Total	104,882	188,191	54,041	28,368	16,374	32,228	424,097
<b>2004</b>							
White	58,158	114,111	29,210	14,969	9,197	20,311	245,962
African American	13,810	20,427	6,263	3,931	2,268	3,932	50,632
Hispanic	25,630	43,545	15,350	8,010	4,262	5,860	102,657
Other	9,123	15,811	4,406	2,007	1,038	1,511	33,900
Total	106,721	193,894	55,229	28,917	16,765	31,614	433,151
<b>2005</b>							
White	57,331	115,152	29,263	14,396	9,302	19,402	244,850
African American	13,754	20,551	6,473	3,988	2,481	4,084	51,331
Hispanic	26,789	45,799	15,642	8,259	4,493	5,854	106,839
Other	9,264	16,125	4,447	2,059	1,057	1,575	34,529
Total	107,138	197,627	55,825	28,702	17,333	30,915	437,549
<b>2006</b>							
White	58,086	114,893	29,738	13,650	9,455	18,292	244,122
African American	14,023	20,885	6,684	3,857	2,690	4,190	52,332
Hispanic	28,318	47,820	16,108	8,262	4,757	5,993	111,352
Other	9,952	16,653	4,734	2,089	1,163	1,640	36,233
Total	110,379	200,251	57,264	27,858	18,065	30,115	444,039
<b>2007</b>							
White	59,008	113,633	29,742	13,405	9,267	17,478	242,544
African American	14,341	21,227	6,754	3,950	2,857	4,364	53,494
Hispanic	30,218	49,156	16,662	8,294	4,889	6,066	115,386
Other	10,580	17,116	4,813	2,068	1,284	1,614	37,492
Total	114,147	201,132	57,971	27,717	18,297	29,522	448,916
<b>2008</b>							
White	58,513	113,360	30,323	13,682	9,518	17,773	243,174
African American	15,011	22,048	7,048	4,016	3,055	4,525	55,704
Hispanic	32,884	51,169	17,206	8,250	5,218	6,330	121,234
Other	11,114	18,309	5,222	2,176	1,340	1,628	39,805
Total	117,522	204,886	59,799	28,124	19,131	30,256	459,917

**Table 9**  
**In-State and Nonresident Participation for Public Universities**

Year	In-State Enrollment	Nonresident Enrollment	Total Enrollment
2003	423,150	49,668	472,818
2004	433,151	48,973	482,124
2005	437,549	47,450	484,999
2006	444,039	47,101	491,140
2007	448,916	48,279	497,195
2008	459,917	49,219	509,136

**Table 10**  
**Fall In-State Participation by Age and Race/Ethnicity—Public Two-Year Colleges**

Year	Age 15-19	Age 20-24	Age 25-29	Age 30-34	Age 35-39	Age 40-Up	All Ages
<b>2003</b>							
White	95,018	81,248	29,850	19,593	13,234	30,178	269,181
African American	13,445	16,449	9,259	7,366	5,121	8,285	59,932
Hispanic	50,412	57,140	23,405	13,997	8,509	12,882	166,388
Other	8,409	10,332	3,919	2,614	1,750	2,803	29,856
Total	167,284	165,169	66,433	43,570	28,614	54,148	525,357
<b>2004</b>							
White	96,059	82,395	30,449	18,907	12,797	28,437	269,107
African American	14,507	16,455	9,510	7,401	5,121	8,193	61,197
Hispanic	55,962	58,145	23,452	13,991	8,241	11,977	171,862
Other	8,858	10,840	3,979	2,643	1,720	2,756	30,826
Total	175,386	167,835	67,390	42,942	27,879	51,363	532,992
<b>2005</b>							
White	97,004	82,553	30,656	17,998	12,585	26,623	267,468
African American	15,446	16,158	9,267	7,003	4,946	8,047	60,873
Hispanic	59,507	59,099	22,990	13,602	8,071	11,377	174,963
Other	10,162	11,521	4,149	2,485	1,651	2,593	32,587
Total	182,119	169,331	67,062	41,088	27,253	48,640	535,891
<b>2006</b>							
White	99,834	80,265	30,297	16,986	12,544	25,568	265,583
African American	16,494	16,474	9,595	7,031	5,328	8,310	63,274
Hispanic	67,470	60,579	23,707	13,526	8,191	11,246	185,552
Other	11,454	11,542	4,216	2,429	1,734	2,688	34,109
Total	195,252	168,860	67,815	39,972	27,797	47,812	548,518
<b>2007</b>							
White	102,513	79,635	30,643	16,397	12,370	24,130	265,884
African American	17,719	16,749	9,543	7,075	5,343	8,464	64,990
Hispanic	73,201	61,498	23,645	13,289	8,230	10,805	191,880
Other	12,711	12,260	4,572	2,484	1,906	2,807	36,817
Total	206,144	170,142	68,403	39,245	27,849	46,206	559,571
<b>2008</b>							
White	94,418	71,278	29,254	15,815	11,733	22,465	245,265
African American	18,152	16,836	9,848	7,094	5,357	8,376	65,877
Hispanic	80,407	61,931	24,334	13,206	8,167	10,293	200,194
Other	12,275	12,180	4,703	2,452	1,875	2,729	36,325
Total	205,252	162,225	68,139	38,567	27,132	43,863	547,661



**Table 11**  
**In-State and Nonresident Participation for Public Two-Year Colleges**

Year	In-State Enrollment	Nonresident Enrollment	Total Enrollment
2003	513,506	22,499	536,005
2004	532,992	24,381	557,373
2005	535,891	30,180	566,071
2006	548,518	27,194	575,712
2007	559,571	27,673	587,244
2008	547,661	27,671	575,332

## Texas Population Projections

The participation forecast used the Texas State Data Center (TSDC) population projections, completed in fall 2006, which are based on a cohort-component technique. Projections from a base population—from the 2000 federal census—were made individually for people with common characteristics (in this case age, gender, and race/ethnicity) for fertility, mortality, and migration. The 2006 projections were used because updated 2008 projections were not available at the time this report was prepared.

Age, gender, and race/ethnicity-specific fertility rates were computed using recorded births and place of residence of the mother. This information was obtained from the Texas Department of Health. Data on women by age (10 to 49) and race/ethnicity were obtained from the 2000 federal census of the population.

Life survival rates for whites, Hispanics, African Americans, and others were computed using Texas Department of Health mortality data. Migration rates were derived using net migration estimates by age, gender and race/ethnicity in Texas for 1990-2000 and 2000-2005. Using this as a base, migration rates were computed for white, Hispanic, African American, and other populations for the appropriate timeframe. To deal with the migration component, which is the most difficult to project, alternative scenarios of growth were developed. All scenarios used the same set of mortality and fertility rates but differed in the assumptions relative to net migration. Population projections used in this Participation Forecast assumed net migration rates that like those experienced from 2000 to 2004. The prior Forecast also used the 2006 projections, but at that time TSDC suggested using the migration scenario that was based on one-half of that experienced during the 1990-2000 timeframe. The 2000-2004 migration scenario produces a population projection for 2015 that is 5.4 percent higher than the projection used in the previous report.

Statewide population projections show several significant features of the future Texas population (see Table 12):

- Between 2008 and 2020, the total population will grow at an average annual rate of about 2.1 percent.
- Hispanics will continue to be the fastest growing racial/ethnic group. In 2008, Hispanics comprised about 37.7 percent of the population; by 2020, this share will reach 46 percent. The African American share will drop from 11.2 percent to 10.3 percent, while the white's percentage will decline from 46.8 percent in 2008 to approximately 37.9 percent in 2020.
- The 35 and older age group will see a greater increase in numbers than the younger age group, from 47.7 percent of the population in 2008 to 50.8 percent of the population in 2020.
- The 15-to-34 year-old population, which makes up 30.2 percent of the total in 2008, will drop to 28.6 percent in 2020. The ethnic make-up of this group will change from 44.8 percent Hispanic in 2008 to 51.7 percent in 2020.

Although Table 12 indicates the populations at the statewide level only, similar data are available for each of the 254 Texas counties.

**Table 12**  
**Texas Statewide Population by Race/Ethnicity**

<b>Year</b>	<b>Age 0-14</b>	<b>Age 15-19</b>	<b>Age 20-24</b>	<b>Age 25-29</b>	<b>Age 30-34</b>	<b>Age 35-39</b>	<b>Age 40-Up</b>	<b>All Ages</b>
<b>2008</b>								
White	2,016,505	728,961	745,408	717,625	668,870	768,126	5,681,670	11,327,165
African American	627,220	241,799	228,213	212,863	182,181	198,861	1,015,847	2,706,984
Hispanic	2,517,912	776,420	782,344	862,724	843,650	751,165	2,582,693	9,116,908
Other	195,150	67,933	69,766	76,204	90,734	103,115	424,221	1,027,123
Total	5,356,787	1,815,113	1,825,731	1,869,416	1,785,435	1,821,267	9,704,431	24,178,180
<b>2009</b>								
White	2,010,969	718,516	744,208	731,628	669,320	750,739	5,724,100	11,349,480
African American	625,880	242,727	233,169	218,160	184,796	198,968	1,039,108	2,742,808
Hispanic	2,590,149	798,598	800,408	894,034	877,633	794,472	2,712,269	9,467,563
Other	200,687	69,969	72,708	78,850	90,565	108,051	456,573	1,077,403
Total	5,427,685	1,829,810	1,850,493	1,922,672	1,822,314	1,852,230	9,932,050	24,637,254
<b>2010</b>								
White	2,007,083	703,166	742,967	739,086	675,357	726,004	5,776,283	11,369,946
African American	626,205	239,755	239,429	221,385	190,925	196,020	1,064,809	2,778,528
Hispanic	2,667,216	812,714	826,646	915,695	913,216	837,161	2,855,095	9,827,743
Other	206,420	71,828	75,757	81,257	90,687	111,567	491,913	1,129,429
Total	5,506,924	1,827,463	1,884,799	1,957,423	1,870,185	1,870,752	10,188,100	25,105,646
<b>2011</b>								
White	2,002,474	690,163	738,183	742,331	690,291	696,729	5,828,389	11,388,560
African American	626,942	236,294	244,785	224,198	198,819	191,562	1,091,430	2,814,030
Hispanic	2,747,422	822,399	857,575	931,452	951,533	880,346	3,006,614	10,197,341
Other	212,012	73,817	78,986	83,413	91,573	113,788	529,729	1,183,318
Total	5,588,850	1,822,673	1,919,529	1,981,394	1,932,216	1,882,425	10,456,162	25,583,249
<b>2015</b>								
White	1,986,676	656,273	699,019	739,062	744,757	677,780	5,940,513	11,444,080
African American	633,423	222,992	250,885	242,560	223,631	195,798	1,182,445	2,951,734
Hispanic	3,097,218	852,870	966,434	1,010,810	1,104,524	1,039,743	3,695,064	11,766,663
Other	237,982	78,004	90,855	95,686	103,158	114,153	698,873	1,418,711
Total	5,955,299	1,810,139	2,007,193	2,088,118	2,176,070	2,027,474	11,516,895	27,581,188
<b>2020</b>								
White	1,894,197	691,728	652,629	695,622	745,012	747,622	6,034,382	11,461,192
African American	632,839	221,858	233,368	254,369	245,090	229,594	1,289,155	3,106,273
Hispanic	3,446,967	1,051,181	1,015,478	1,184,619	1,218,323	1,260,439	4,745,254	13,922,261
Other	262,073	98,919	99,190	115,080	121,219	128,953	937,379	1,762,813
Total	6,236,076	2,063,686	2,000,665	2,249,690	2,329,644	2,366,608	13,006,170	30,252,539

### Participation Rate Alternatives

The five-year (2003-2007) in-state participation database and the population database were used to obtain enrollment rates for each of the four racial/ethnic groups (white, Hispanic, African American, and other) by county and age groups for each institution. Three alternative rates were calculated as follows:

2007 Racial/Ethnic Rate: The total number of students in a specific age/racial/ethnic group from each county attending each institution in 2007 divided by the total number of people of the specific age/racial/ethnic group living in the county.

Trend Racial/Ethnic Rates: Using five years of observed participation data, two straight-line arithmetic trend participation levels were developed by age/racial/ethnic groups and county for each institution. These were: (1) the 2003-2007 five-year trend extended to 2008 and (2) the five-year trend extended to 2009. The equation  $Y_c = a + bx$  was used, where:

$a$  is the mean participation over the five-year period;

$b$  is the deviation from the center year multiplied by the observed participation, summed and divided by the sum of the squares of the deviations, and

$x = +2$  for the five-year trend extended to 2008,  $+3$  for the five-year trend extended to 2009.

The predicted trend participation ( $Y_c$ ) for each age/racial/ethnic group was divided by the total number of people of the specific age/racial/ethnic group living in the county for the corresponding year.

Each of these three alternative participation rates contained attendance rates for each of the 254 counties at each institution by six age groups (15 to 19, 20 to 24, 25 to 29, 30 to 34, 35 to 39, and 40 and above) for four racial/ethnic groups (white, Hispanic, African American, and other).

### In-State Participation Forecast Alternatives for 2008

Computed participation rates for each county were multiplied by the corresponding age/racial/ethnic/county population projections for 2008. This produced three alternative forecasts of students by age/racial/ethnicity from each county expected to attend each institution in 2008. Age groups were then summed to obtain statewide forecasts of white, Hispanic, African American, and other students at each institution in 2008. Total in-state participation for each of the three alternatives was obtained by summing the racial/ethnic participation.

The three alternative in-state participation levels for each institution are shown in Tables 13 and 14.

**Table 13**  
**In-State Participation Alternative Forecasts—Public Universities**

	2008 Actual Prelim	2007 (Trend) Rate	2008 (Trend) Rate	2009 (Trend) Rate
Angelo State University	5,946	5,894	6,063	6,280
Lamar University	12,380	9,418	9,484	9,415
Midwestern State University	5,218	5,304	5,355	5,316
Prairie View A&M University	7,659	7,900	7,683	7,667
Sam Houston State University	16,097	16,043	16,179	16,938
Stephen F. Austin State University	11,538	11,190	11,286	11,439
Sul Ross State University	1,788	1,732	1,802	1,808
Sul Ross State University Rio Grande College	901	958	984	969
Tarleton State University	9,180	9,063	9,104	9,304
Texas A&M International University	5,620	4,887	4,726	4,853
Texas A&M University	41,378	40,230	39,880	40,433
Texas A&M University at Galveston	1,511	1,362	1,409	1,432
Texas A&M University-Commerce	8,263	8,533	8,371	8,469
Texas A&M University-Corpus Christi	8,613	8,271	8,421	8,640
Texas A&M University-Kingsville	6,385	5,867	5,903	5,784
Texas A&M University-Texarkana	1,150	1,126	1,195	1,238
Texas Southern University	7,582	8,181	8,791	8,348
Texas State University - San Marcos	28,381	27,768	27,465	27,889
Texas Tech University	25,307	25,195	25,060	25,137
Texas Woman's University	11,858	11,493	11,435	11,810
The University of Texas at Arlington	21,937	22,568	22,723	22,698
The University of Texas at Austin	40,330	40,875	40,053	39,659
The University of Texas at Brownsville	6,046	5,835	5,661	6,071
The University of Texas at Dallas	11,267	10,802	10,906	10,978
The University of Texas at El Paso	17,701	17,456	17,305	17,576
The University of Texas at San Antonio	27,234	27,426	27,566	28,224
The University of Texas at Tyler	5,883	5,942	6,103	6,485
The University of Texas of the Permian Basin	3,463	3,421	3,540	3,700
The University of Texas-Pan American	16,325	17,337	16,943	16,670
University of Houston	32,458	31,509	30,912	30,379
University of Houston-Clear Lake	6,603	6,738	6,815	6,726
University of Houston-Downtown	11,829	11,621	11,385	11,348
University of Houston-Victoria	3,066	2,771	2,734	2,788
University of North Texas	31,792	32,435	32,107	32,839
West Texas A&M University	6,752	6,691	6,771	6,930

**Table 14**  
**In-State Participation Alternative Forecasts**  
**Public Two-Year Colleges**

	2008 Actual Prelim	2007 (Trend) Rate	2008 (Trend) Rate	2009 (Trend) Rate
ACCD - Northeast Lakeview College	405	97	136	155
ACCD - Northwest Vista College	11,923	10,291	10,242	10,798
ACCD - Palo Alto College	7,785	8,061	8,092	8,104
ACCD - San Antonio College	20,985	20,823	20,706	20,394
ACCD - St. Philip's College	9,828	9,571	9,528	9,383
Alvin Community College	4,351	4,080	3,944	3,885
Amarillo College	9,735	10,093	10,174	10,183
Angelina College	4,894	4,533	4,579	4,539
Austin Community College	31,533	30,094	29,934	30,429
Blinn College	15,213	14,171	14,171	14,412
Brazosport College	3,831	3,788	3,742	3,728
Central Texas College District	7,675	6,854	6,319	6,061
Cisco Junior College	3,633	3,272	3,560	3,683
Clarendon College	1,136	1,005	1,139	1,207
Coastal Bend College	3,299	3,091	3,168	3,094
College of the Mainland Community College District	3,575	3,564	3,674	3,548
Collin County Community College District	19,037	19,533	18,621	18,483
DCCCD - Brookhaven College	8,901	8,645	8,591	8,377
DCCCD - Cedar Valley College	4,879	4,376	4,352	4,351
DCCCD - Eastfield College	9,287	8,791	8,915	8,755
DCCCD - El Centro College	7,473	6,645	6,556	6,708
DCCCD - Mountain View College	6,454	6,260	6,408	6,481
DCCCD - North Lake College	8,507	8,109	8,159	8,387
DCCCD - Richland College	12,879	12,873	12,967	13,114
Del Mar College	11,116	10,909	11,088	11,089
El Paso Community College District	22,143	21,355	20,987	19,825
Frank Phillips College	1,140	1,167	1,294	1,369
Galveston College	2,163	1,991	2,039	1,955
Grayson County College	3,878	3,376	3,375	3,292
Hill College	3,634	3,376	3,417	3,479
Houston Community College System	33,128	34,153	33,297	33,273
Howard College	3,409	3,180	3,213	3,449
Kilgore College	5,234	4,917	4,827	4,907
Lamar Institute of Technology	2,969	2,546	2,537	2,543
Lamar State College-Orange	1,860	1,707	1,786	1,797
Lamar State College-Port Arthur	2,019	2,248	2,326	2,300
Laredo Community College	7,908	7,652	7,627	7,344
Lee College	5,762	5,440	4,898	4,633
Lone Star College System Cy-Fair College	12,145	10,925	11,077	12,145
Lone Star College System Kingwood College	7,269	7,043	7,036	7,267
Lone Star College System Montgomery College	8,947	8,567	8,330	8,517
Lone Star College System North Harris College	10,709	10,062	9,836	9,729
Lone Star College System Tomball College	8,266	7,736	7,609	7,726

	2008 Actual Prelim	2007 (Trend) Rate	2008 (Trend) Rate	2009 (Trend) Rate
McLennan Community College	7,728	7,882	7,959	8,223
Midland College	5,633	5,513	5,741	5,899
Navarro College	8,034	7,364	7,454	7,978
North Central Texas Community College District	7,778	7,491	7,488	7,606
Northeast Texas Community College	2,372	2,378	2,392	2,398
Odessa College	4,541	4,414	4,510	4,547
Panola College	1,807	1,710	1,788	1,868
Paris Junior College	4,507	4,120	4,250	4,327
Ranger College	848	764	897	956
San Jacinto College Central Campus	12,599	11,942	12,077	12,234
San Jacinto College North Campus	5,383	5,019	5,123	5,080
San Jacinto College South Campus	8,634	8,059	8,152	8,356
South Plains College	9,052	8,743	8,752	8,803
South Texas College	21,614	20,429	19,689	20,108
Southwest Collegiate Institute for the Deaf	84	96	138	147
Southwest Texas Junior College	4,873	4,885	4,986	4,968
TCCD - Northeast Campus	14,770	12,655	12,376	12,400
TCCD - Northwest Campus	9,886	8,358	8,130	8,460
TCCD - South Campus	10,924	9,933	9,865	9,955
TCCD - Southeast Campus	11,701	10,735	9,963	10,267
Temple College	5,085	4,689	4,492	4,615
Texarkana College	3,490	2,924	2,816	2,777
Texas Southmost College	13,476	13,027	12,960	14,152
Trinity Valley Community College	5,738	5,533	5,548	5,482
TSTC Harlingen Campus	3,883	4,947	4,726	4,844
TSTC Marshall Campus	923	691	694	724
TSTC Waco Campus	4,871	4,223	4,348	4,443
TSTC West Texas Campus	1,803	1,608	1,669	1,704
Tyler Junior College	9,681	8,128	8,592	8,359
Vernon College	2,838	2,671	2,748	2,846
Victoria College, The	3,936	3,939	3,987	4,001
Weatherford College	4,683	4,445	4,482	4,534
Western Texas College	2,075	2,010	2,172	2,331
Wharton County Junior College	6,019	6,020	6,032	5,934

### In-State Participation "Best Fit" Rate Selection

The next step was to select for each institution one of the three in-state participation rate alternatives. The following criteria were used:

1. The participation forecast produced for 2008, when compared with the certified/preliminary 2008 enrollment and the five-year trend, must be the one that most closely follows the general trend of the historical participation pattern. If the historical participation pattern is increasing, the selected alternative should show an increase. If the pattern is decreasing, the selected alternative should show a decrease. If the pattern is stable, the nearest alternative to the certified/preliminary 2008 participation is selected.
2. If the historical pattern is increasing or decreasing, the 2008 participation produced by the selected alternative must fall within 3 percent of the certified/preliminary 2008 participation. If the historical pattern is stable, the 2008 participation produced by the selected alternative must fall within plus or minus 1 percent of the certified/preliminary 2008 participation. If necessary, a multiplier can be computed to satisfy this condition.

The selected "best fit" alternative (see Tables 15 and 16) determined which rate to use for each institution in forecasting 2008, 2009, 2010, 2011, 2015, and 2020 participation. The multiplier, if needed, was used to augment the forecast for each year.



**Table 15**  
**In-State Participation—Public Universities**  
**Comparison of Preliminary to Forecast In-State Participation for 2008**

	2008 Actual/ Prelim In- State Participation	"Best Fit" In-State Participation	Selected Rate
Angelo State University	5,946	5,894	2007
Lamar University	12,380	9,484	2008
Midwestern State University	5,218	5,304	2007
Prairie View A&M University	7,659	7,667	2009
Sam Houston State University	16,097	16,179	2008
Stephen F. Austin State University	11,538	11,439	2009
Sul Ross State University	1,788	1,732	2007
Sul Ross State University Rio Grande College	901	958	2007
Tarleton State University	9,180	9,104	2008
Texas A&M International University	5,620	4,887	2007
Texas A&M University	41,378	40,433	2009
Texas A&M University at Galveston	1,511	1,432	2009
Texas A&M University-Commerce	8,263	8,371	2008
Texas A&M University-Corpus Christi	8,613	8,640	2009
Texas A&M University-Kingsville	6,385	5,903	2008
Texas A&M University-Texarkana	1,150	1,126	2007
Texas Southern University	7,582	8,181	2007
Texas State University - San Marcos	28,381	27,889	2009
Texas Tech University	25,307	25,195	2007
Texas Woman's University	11,858	11,810	2009
The University of Texas at Arlington	21,937	22,568	2007
The University of Texas at Austin	40,330	40,053	2008
The University of Texas at Brownsville	6,046	6,071	2009
The University of Texas at Dallas	11,267	10,978	2009
The University of Texas at El Paso	17,701	17,576	2009
The University of Texas at San Antonio	27,234	27,426	2007
The University of Texas at Tyler	5,883	5,942	2007
The University of Texas of the Permian Basin	3,463	3,540	2008
The University of Texas-Pan American	16,325	16,670	2009
University of Houston	32,458	31,509	2007
University of Houston-Clear Lake	6,603	6,726	2009
University of Houston-Downtown	11,829	11,621	2007
University of Houston-Victoria	3,066	2,788	2009
University of North Texas	31,792	32,107	2008
West Texas A&M University	6,752	6,771	2008

**Table 16**  
**In-State Participation—Public Two-Year Colleges**  
**Comparison of Preliminary to Forecast In-State Participation for 2008**

	2008 Actual/ Preliminary In-State Participation	"Best Fit" In-State Participation	Selected Rate
ACCD - Northeast Lakeview College	405	155	2009
ACCD - Northwest Vista College	11,923	10,798	2009
ACCD - Palo Alto College	7,785	8,061	2007
ACCD - San Antonio College	20,985	20,823	2007
ACCD - St. Philip's College	9,828	9,571	2007
Alvin Community College	4,351	4,080	2007
Amarillo College	9,735	10,093	2007
Angelina College	4,894	4,579	2008
Austin Community College	31,533	30,429	2009
Blinn College	15,213	14,412	2009
Brazosport College	3,831	3,788	2007
Central Texas College District	7,675	6,854	2007
Cisco Junior College	3,633	3,683	2009
Clarendon College	1,136	1,139	2008
Coastal Bend College	3,299	3,168	2008
College of the Mainland Community College District	3,575	3,564	2007
Collin County Community College District	19,037	19,533	2007
DCCCD - Brookhaven College	8,901	8,645	2007
DCCCD - Cedar Valley College	4,879	4,376	2007
DCCCD - Eastfield College	9,287	8,915	2008
DCCCD - El Centro College	7,473	6,708	2009
DCCCD - Mountain View College	6,454	6,481	2009
DCCCD - North Lake College	8,507	8,387	2009
DCCCD - Richland College	12,879	12,873	2007
Del Mar College	11,116	11,089	2009
El Paso Community College District	22,143	21,355	2007
Frank Phillips College	1,140	1,167	2007
Galveston College	2,163	2,039	2008
Grayson County College	3,878	3,376	2007
Hill College	3,634	3,479	2009
Houston Community College System	33,128	33,273	2009
Howard College	3,409	3,449	2009
Kilgore College	5,234	4,917	2007
Lamar Institute of Technology	2,969	2,546	2007
Lamar State College-Orange	1,860	1,797	2009
Lamar State College-Port Arthur	2,019	2,248	2007
Laredo Community College	7,908	7,652	2007
Lee College	5,762	5,440	2007
Lone Star College System Cy-Fair College	12,145	12,145	2009
Lone Star College System Kingwood College	7,269	7,267	2009

	2008 Actual/ Preliminary In-State Participation	"Best Fit" In-State Participation	Selected Rate
Lone Star College System Montgomery College	8,947	8,567	2007
Lone Star College System North Harris College	10,709	10,062	2007
Lone Star College System Tomball College	8,266	7,736	2007
McLennan Community College	7,728	7,882	2007
Midland College	5,633	5,741	2008
Navarro College	8,034	7,978	2009
North Central Texas Community College District	7,778	7,606	2009
Northeast Texas Community College	2,372	2,378	2007
Odessa College	4,541	4,510	2008
Panola College	1,807	1,868	2009
Paris Junior College	4,507	4,327	2009
Ranger College	848	897	2008
San Jacinto College Central Campus	12,599	12,234	2009
San Jacinto College North Campus	5,383	5,123	2008
San Jacinto College South Campus	8,634	8,356	2009
South Plains College	9,052	8,803	2009
South Texas College	21,614	20,429	2007
Southwest Collegiate Institute for the Deaf	84	96	2007
Southwest Texas Junior College	4,873	4,885	2007
TCCD - Northeast Campus	14,770	12,655	2007
TCCD - Northwest Campus	9,886	8,460	2009
TCCD - South Campus	10,924	9,955	2009
TCCD - Southeast Campus	11,701	10,735	2007
Temple College	5,085	4,689	2007
Texarkana College	3,490	2,924	2007
Texas Southmost College	13,476	13,027	2007
Trinity Valley Community College	5,738	5,548	2008
TSTC Harlingen Campus	3,883	4,726	2008
TSTC Marshall Campus	923	724	2009
TSTC Waco Campus	4,871	4,443	2009
TSTC West Texas Campus	1,803	1,704	2009
Tyler Junior College	9,681	8,592	2008
Vernon College	2,838	2,846	2009
Victoria College, The	3,936	3,939	2007
Weatherford College	4,683	4,534	2009
Western Texas College	2,075	2,172	2008
Wharton County Junior College	6,019	6,020	2007

### In-State Participation Forecast

The selected “best fit” participation rate alternative for each institution and for each racial/ethnic group was applied to the corresponding age/racial/ethnic group projected population for 2008, 2009, 2010, 2015, and 2020 by county. Age groups were summed for each year, by racial/ethnic group, to provide county total participation for white, Hispanic, African American, and other students at each institution for each of the forecast years. County participation levels were summed by institution and year to provide total white, Hispanic, African American, and other student forecasts for each institution. Finally, the racial/ethnic participation levels for each institution were summed to produce total in-state participation. Multipliers are applied to the in-state participation to meet the criteria described above, if needed.

### Nonresident Participation Ratios

In fall 2008, the percent of out-of-state students varied from 1 percent to 27 percent at public universities and from less than 1 percent to 7 percent at public two-year colleges. Therefore, it was necessary to determine a means of accounting for expected nonresident students in each institution. This was done by selecting a representative “nonresidential factor” for each institution, based on historical data from 2003 to 2007. The ratios of nonresident to in-state participation were compared with the preliminary 2008 nonresident to in-state ratios for each institution. The selected ratio became a factor used in the forecast process to determine nonresident participation forecasts for each institution. (See Tables 17 and 18.)

**Table 17**  
**Nonresident Participation Ratios—Public Universities**

	Average	Actual/Prelim		Selected
		2007	2008	
Angelo State University	0.038	0.038	0.035	0.038
Lamar University	0.074	0.082	0.075	0.075
Midwestern State University	0.117	0.110	0.168	0.117
Prairie View A&M University	0.075	0.079	0.081	0.075
Sam Houston State University	0.029	0.029	0.036	0.029
Stephen F. Austin State University	0.032	0.030	0.039	0.032
Sul Ross State University	0.032	0.032	0.059	0.032
Sul Ross State University Rio Grande College	0.006	0.006	0.010	0.006
Tarleton State University	0.053	0.052	0.049	0.053
Texas A&M International University	0.067	0.067	0.062	0.067
Texas A&M University	0.158	0.159	0.163	0.158
Texas A&M University at Galveston	0.198	0.189	0.176	0.198
Texas A&M University-Commerce	0.076	0.054	0.064	0.076
Texas A&M University-Corpus Christi	0.038	0.037	0.062	0.038
Texas A&M University-Kingsville	0.112	0.127	0.120	0.120
Texas A&M University-Texarkana	0.430	0.427	0.040	0.430
Texas Southern University	0.162	0.186	0.200	0.162
Texas State University - San Marcos	0.031	0.024	0.026	0.026
Texas Tech University	0.120	0.121	0.193	0.120
Texas Woman's University	0.073	0.052	0.029	0.073
The University of Texas at Arlington	0.127	0.120	0.143	0.127
The University of Texas at Austin	0.238	0.239	0.240	0.238
The University of Texas at Brownsville	0.033	0.041	0.036	0.036
The University of Texas at Dallas	0.361	0.368	0.323	0.361
The University of Texas at El Paso	0.178	0.169	0.156	0.178
The University of Texas at San Antonio	0.052	0.056	0.050	0.052
The University of Texas at Tyler	0.046	0.037	0.043	0.043
The University of Texas of the Permian Basin	0.045	0.044	0.040	0.045
The University of Texas-Pan American	0.037	0.042	0.077	0.037
University of Houston	0.112	0.117	0.112	0.112
University of Houston-Clear Lake	0.129	0.128	0.155	0.129
University of Houston-Downtown	0.036	0.036	0.038	0.036
University of Houston-Victoria	0.024	0.028	0.044	0.024
University of North Texas	0.093	0.072	0.094	0.093
West Texas A&M University	0.119	0.122	0.118	0.119

**Table 18**  
**Nonresident Participation Ratios—Public Two-Year Colleges**

	Average	Actual/Prelim		
		2007	2008	Selected
ACCD - Northeast Lakeview College	0.002	0.010	0.025	0.025
ACCD - Northwest Vista College	0.032	0.040	0.026	0.032
ACCD - Palo Alto College	0.010	0.008	0.009	0.009
ACCD - San Antonio College	0.039	0.039	0.039	0.039
ACCD - St. Philip's College	0.054	0.044	0.045	0.045
Alvin Community College	0.017	0.020	0.009	0.017
Amarillo College	0.007	0.009	0.030	0.007
Angelina College	0.017	0.016	0.008	0.017
Austin Community College	0.067	0.070	0.072	0.072
Blinn College	0.022	0.021	0.025	0.022
Brazosport College	0.011	0.009	0.013	0.011
Central Texas College District	0.225	0.217	0.198	0.225
Cisco Junior College	0.011	0.013	0.035	0.011
Clarendon College	0.091	0.097	0.092	0.092
Coastal Bend College	0.009	0.005	0.066	0.009
College of the Mainland Community College District	0.001	0.001	0.011	0.001
Collin County Community College District	0.075	0.075	0.081	0.075
DCCCD - Brookhaven College	0.101	0.119	0.124	0.124
DCCCD - Cedar Valley College	0.018	0.025	0.030	0.018
DCCCD - Eastfield College	0.017	0.022	0.012	0.017
DCCCD - El Centro College	0.052	0.043	0.045	0.045
DCCCD - Mountain View College	0.022	0.027	0.039	0.022
DCCCD - North Lake College	0.129	0.124	0.151	0.129
DCCCD - Richland College	0.075	0.079	0.111	0.075
Del Mar College	0.027	0.020	0.019	0.027
El Paso Community College District	0.062	0.063	0.061	0.062
Frank Phillips College	0.068	0.073	0.089	0.068
Galveston College	0.038	0.045	0.033	0.038
Grayson County College	0.098	0.102	0.099	0.099
Hill College	0.031	0.022	0.022	0.022
Houston Community College System	0.123	0.098	0.154	0.123
Howard College	0.026	0.033	0.011	0.026
Kilgore College	0.038	0.041	0.048	0.038
Lamar Institute of Technology	0.015	0.016	0.011	0.016
Lamar State College-Orange	0.131	0.171	0.178	0.178
Lamar State College-Port Arthur	0.009	0.010	0.007	0.009
Laredo Community College	0.037	0.038	0.036	0.037
Lee College	0.030	0.062	0.019	0.030
Lone Star College System Cy-Fair College	0.066	0.080	0.039	0.066
Lone Star College System Kingwood College	0.039	0.048	0.023	0.039
Lone Star College System Montgomery College	0.043	0.061	0.029	0.043
Lone Star College System North Harris College	0.081	0.093	0.037	0.081

	Average	Actual/Prelim		
		2007	2008	Selected
Lone Star College System Tomball College	0.048	0.055	0.028	0.048
McLennan Community College	0.018	0.018	0.019	0.019
Midland College	0.026	0.030	0.032	0.032
Navarro College	0.050	0.026	0.031	0.031
North Central Texas Community College District	0.024	0.020	0.038	0.024
Northeast Texas Community College	0.036	0.035	0.032	0.036
Odessa College	0.030	0.034	0.038	0.038
Panola College	0.099	0.095	0.096	0.099
Paris Junior College	0.033	0.036	0.053	0.033
Ranger College	0.078	0.060	0.048	0.078
San Jacinto College Central Campus	0.043	0.037	0.031	0.043
San Jacinto College North Campus	0.049	0.041	0.029	0.049
San Jacinto College South Campus	0.086	0.078	0.071	0.086
South Plains College	0.045	0.050	0.024	0.045
South Texas College	0.000	0.000	0.021	0.000
Southwest Collegiate Institute for the Deaf	0.313	0.253	0.358	0.313
Southwest Texas Junior College	0.012	0.011	0.030	0.012
TCCD - Northeast Campus	0.023	0.033	0.019	0.023
TCCD - Northwest Campus	0.019	0.024	0.018	0.023
TCCD - South Campus	0.020	0.026	0.018	0.020
TCCD - Southeast Campus	0.033	0.046	0.024	0.033
Temple College	0.014	0.022	0.017	0.017
Texarkana College	0.338	0.324	0.339	0.338
Texas Southmost College	0.044	0.036	0.026	0.044
Trinity Valley Community College	0.015	0.017	0.018	0.015
TSTC Harlingen Campus	0.017	0.010	0.415	0.017
TSTC Marshall Campus	0.020	0.013	0.020	0.020
TSTC Waco Campus	0.026	0.019	0.065	0.026
TSTC West Texas Campus	0.008	0.011	0.017	0.008
Tyler Junior College	0.017	0.016	0.034	0.017
Vernon College	0.053	0.046	0.043	0.053
Victoria College, The	0.018	0.010	0.014	0.014
Weatherford College	0.022	0.028	0.022	0.022
Western Texas College	0.028	0.036	0.051	0.028
Wharton County Junior College	0.002	0.002	0.018	0.002

### Draft Total Participation Forecast and Adjustments

At this point in the forecast process, total in-state participation forecasts for 2008, 2009, 2010, 2015, and 2020, plus a nonresident factor, were available for each institution. Multiplying the selected nonresident factor by the in-state participation produced nonresident participation by institution and year. Nonresident and in-state participation levels were added to produce a base total participation forecast for each institution for 2008, 2009, 2010, 2015, and 2020. The selected alternative used to forecast in-state participation and the factor which produced nonresident participation were controlled by quantifiable historical participation patterns and expected demographic changes. Consequently, the participation forecasts which they produced did not take into account future changes in the status of institutions or internal, non-quantifiable conditions which could influence participation at a specific college or university. These were addressed, to some degree, by making adjustments to institutional draft forecasts as appropriate:

- Some public universities have, or intend to establish, policies that will cap enrollment at specific levels. For these institutions, the model might possibly forecast an excess number of students. In cases where this occurred, the excess was subtracted and redistributed to other institutions.
- Other institutions have responded with limitations on capacity, new programs, or other institution-specific items for adjustment. Table 19 itemizes the institutional adjustments used to modify the CB forecasts.

**Table 19**  
**Adjustments to Draft Participation Forecasts**  
**Based on Local Conditions**

	<b>Institutional Adjustments</b>				
	<b>2009</b>	<b>2010</b>	<b>2011</b>	<b>2015</b>	<b>2020</b>
Texas A&M University-Corpus Christi	206	502	712	1,900	2,925
Texas State University - San Marcos		846	1,077	2,265	2,705
Texas Woman's University	-317				
The University of Texas at El Paso				5,900	6,200
ACCD - Northeast Lakeview College	583	1,583	2,584	5,591	8,577
ACCD - St. Philip's College	197	190	113	105	103
Collin County Com College District	-595	-898	-1,261	-2,627	-4,397
Houston Community College System	500	750	900	900	900



**Participation Forecast –  
Texas Independent Senior Colleges and Universities**

Forecasts of total participation for the independent senior colleges and universities were calculated by first determining the historical correlation between independent and public university total participation levels for the period 2003 to 2007 as follows:

**Table 20  
Participation at Public and Independent Universities**

Year	Public Universities (X)	Independent Senior Institutions (Y)
2003	455,719	114,082
2004	472,818	113,497
2005	482,124	115,155
2006	491,140	115,684
2007	497,195	116,278

These observed data were used to develop the following regression equation:

$$Y_i = \bar{Y} + \frac{\sum xY}{\sum x^2} (X_i - \bar{X})$$

or

Where:

$Y_i$  is the predicted value of participation at independent colleges and universities

$X_i$  is the predicted value of participation at public universities

$\bar{Y}$  is the mean of the Y observations (independent senior institutions)

$\bar{X}$  is the mean of the X observations (public universities)

x is the deviation of X observations from the mean

After forecasts for public universities were made, the values as shown below were substituted for  $X_i$ . The regression equation was used to predict the participation for independent colleges and universities. An additional multiplier was added to account for past error. The following forecast was predicted:

**Table 21**  
**Independent Senior College and University Forecast**

<b>Year</b>	<b>Public University Forecast</b>	<b>Independent Senior College and University Forecast</b>
2009	514,582	118,035
2010	520,130	118,461
2011	524,299	118,827
2015	549,903	120,446
2020	572,876	122,163

Related reports available from the Texas Higher Education Coordinating Board, Division of Planning and Information Resources:

*Closing the Gaps by 2015*, adopted 2000, revised October 2005  
<http://www.thecb.state.tx.us/reports/PDF/0379.PDF> and  
<http://www.thecb.state.tx.us/reports/PDF/1176.PDF>

*Closing the Gaps by 2015: Annual Progress Reports*  
<http://www.thecb.state.tx.us/ClosingtheGaps/>

*Regional Plan for Texas Higher Education*, October 2008  
<http://www.thecb.state.tx.us/Reports/PDF/1668.PDF>



This document is available on the Texas Higher Education Coordinating Board Website: <http://www.thecb.state.tx.us>

**For more information contact:**

**Janet Beinke, Director of Planning and Performance**

Planning and Accountability

Texas Higher Education Coordinating Board

P. O. Box 12788

Austin, Texas 78711

(512) 427-6321

(512) 427-6147 (Fax)

[janet.beinke@thecb.state.tx.us](mailto:janet.beinke@thecb.state.tx.us)