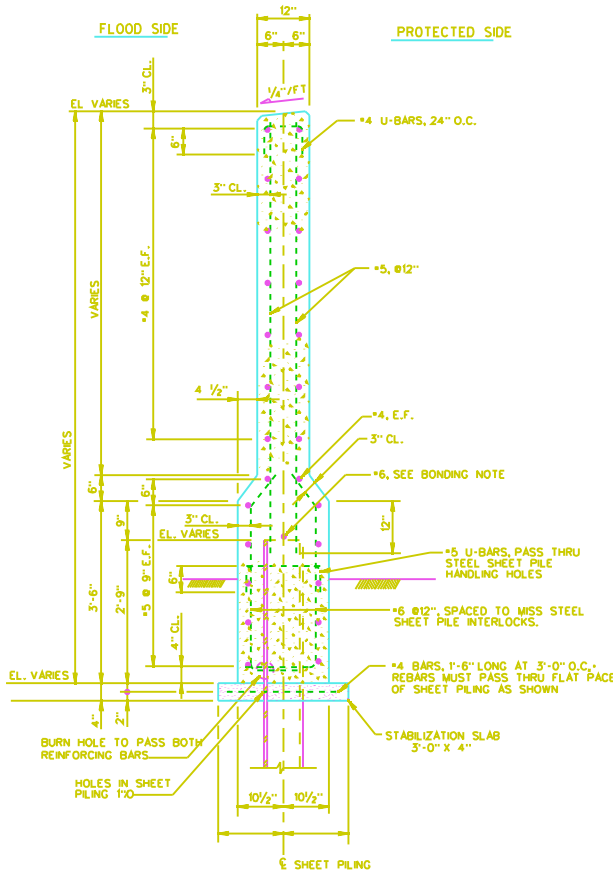
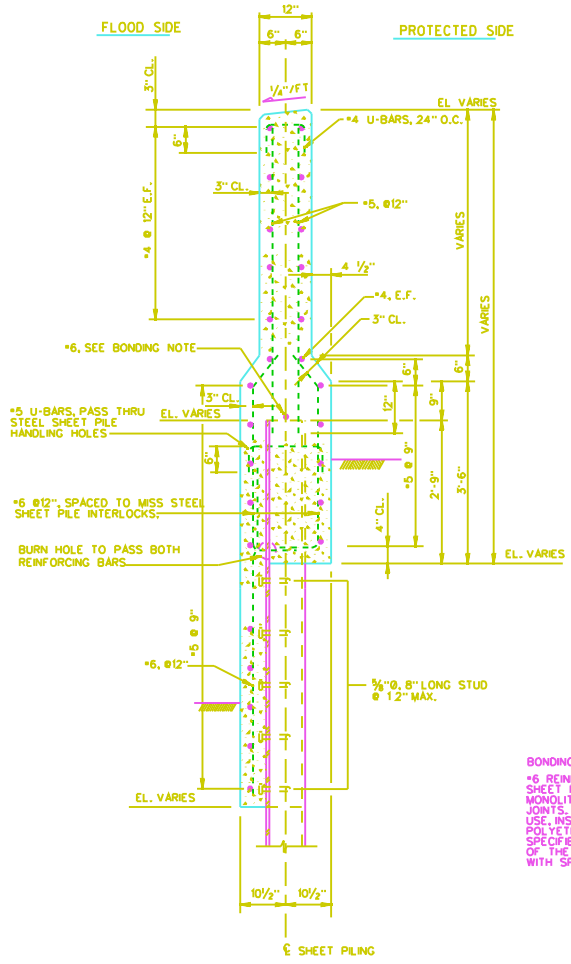


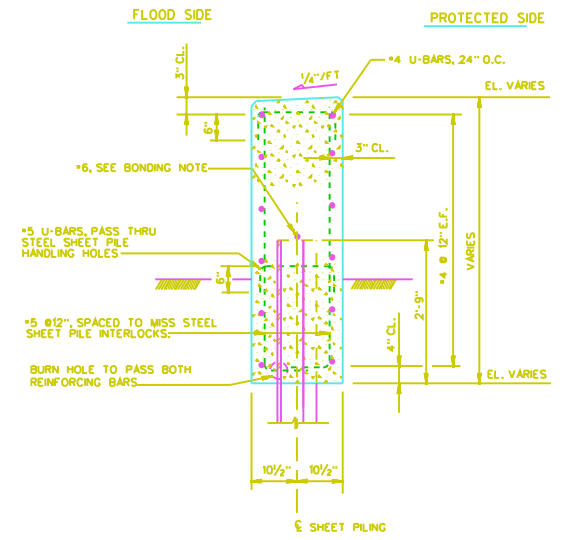
TYPICAL T-WALL SECTION
SCALE: 1" = 1'-0"



TYPICAL I-WALL SECTION
SCALE: 1" = 1'-0"

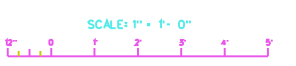


TYPICAL I-WALL SECTION
SCALE: 1" = 1'-0"



TYPICAL I-WALL SECTION
SCALE: 1" = 1'-0"

BONDING NOTE:
#8 REINFORCING BAR SHALL BE WELDED ACROSS THE TOP OF EACH SHEET PILE. #6 REINFORCING BAR SHALL NOT EXTEND ACROSS THE MONOLITH JOINT. INSTALL FLEXIBLE JUMPER AT ALL MONOLITH JOINTS. JUMPERS SHALL BE INSULATED NO. 10 AWG COPPER TYPE USE, INSULATED WITH A MINIMUM OF 95 MILS OF CROSS LINKED POLYETHYLENE IN A 6" DIA. LOOP. JUMPERS SHALL BE WELDED AS SPECIFIED TO ADJACENT STEEL SHEET PILES 3" BELOW THE BOTTOM OF THE CONCRETE CAP. WELDED CONNECTIONS SHALL BE COATED WITH SPLICING EPOXY TO OBTAIN MOISTURE PROOF JOINTS.



LAKE PORTCHARTRAIN, LA., AND VICINITY
HIGH LEVEL PLAN
DESIGN MEMORANDUM NO. 20 GENERAL DESIGN
ORLEANS PARISH - JEFFERSON PARISH
17TH STREET OUTFALL CANAL
(METAIRIE RELIEF)
TYPICAL WALL SECTIONS
U. S. ARMY ENGINEER DISTRICT, NEW ORLEANS
CORPS OF ENGINEERS
DATE: MARCH 1990 FILE # H-2-30300

COMPUTER
AIDED
DESIGN
DRAFTING