

37.5-39



19115
 #4
 4'.8'

B-1
 B-15
 32''

1/15 42.5'-44'

1/14 40'-41.5'

1/13 37.5'-39'

1/12 35'-36'

D

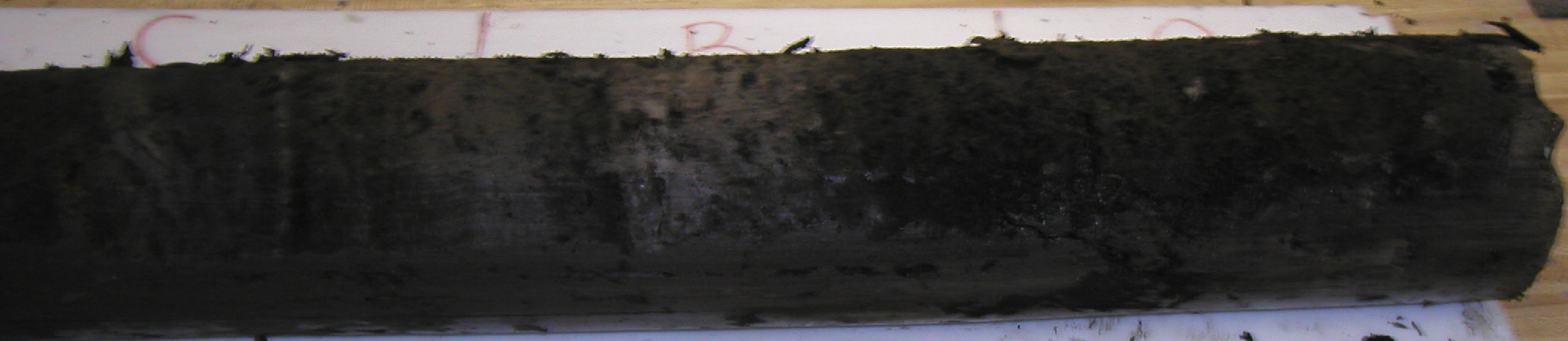
C

B



19115
 #4
 41.8'

B-15
 32"



19115
#4
4'-8"
B-1
B-15
32111





19115
1/15 42.5'-44'

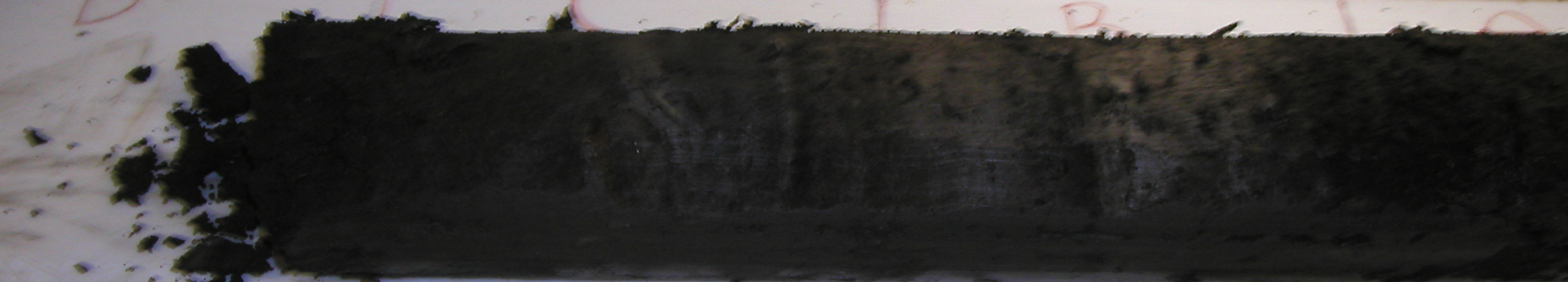
19115
1/14 40'-41.5'

19115
1/13 37.5'-39'

19115
1/12 35'-36'

19115
1/11 0'-6"

D I C I R I D



19115
#4
4'-8'
B-1
B-15
3211



B

A

19115
#2
20''

B-1
B-15



37.5'-39'
19115
1/12 5:36
19115
0-6"



19115
#2
B-1
B-15
6'-2'
20"



B

A



19115
#3
B-15
B-1
2:4
16'



19115
#3
B-15
B-1
2:4
16'

B A



19115
#5
B-1
B-15
8'-12'



D

C

B



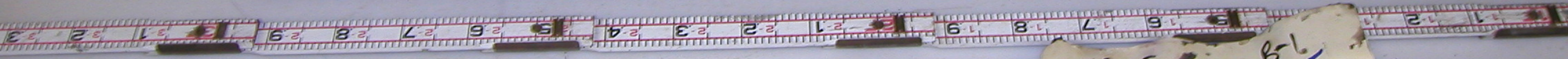
1915
#5
B-1
B-15
8'-12'

19113 32.5'-39'
19105 11/12 5'-36"
19115 0'-6"



19115
51191
#5
8'-12'
B-6
B-15





19115
#5
8'-12'
B-1
B-15



19115
#6 B-15
12-16 31"

C

B

A



19115 B-1
#6 B-15
12-16 31"



19115
11/13 37.5'-39'

19115
11/12 5'-8'

19115
11/11 0-6"

C B A



19115 B-1
#6 B-15
12-16 31"





19115
1115 42.5'-44'

19115
1114 40'-41.5'

19115
1113 37.5'-39'

19115
1112 5'-36'

19115
1111 0-6"



C

B

A

19115 B-1
#6 B-15
12-16 31"

B

A



191
#7
16:20
B-1
B-15
46"



16'-20"
 #7
 B-1
 B-15
 46"



19115
11/13 32.5'-39'

19105
11/12 5'-36'

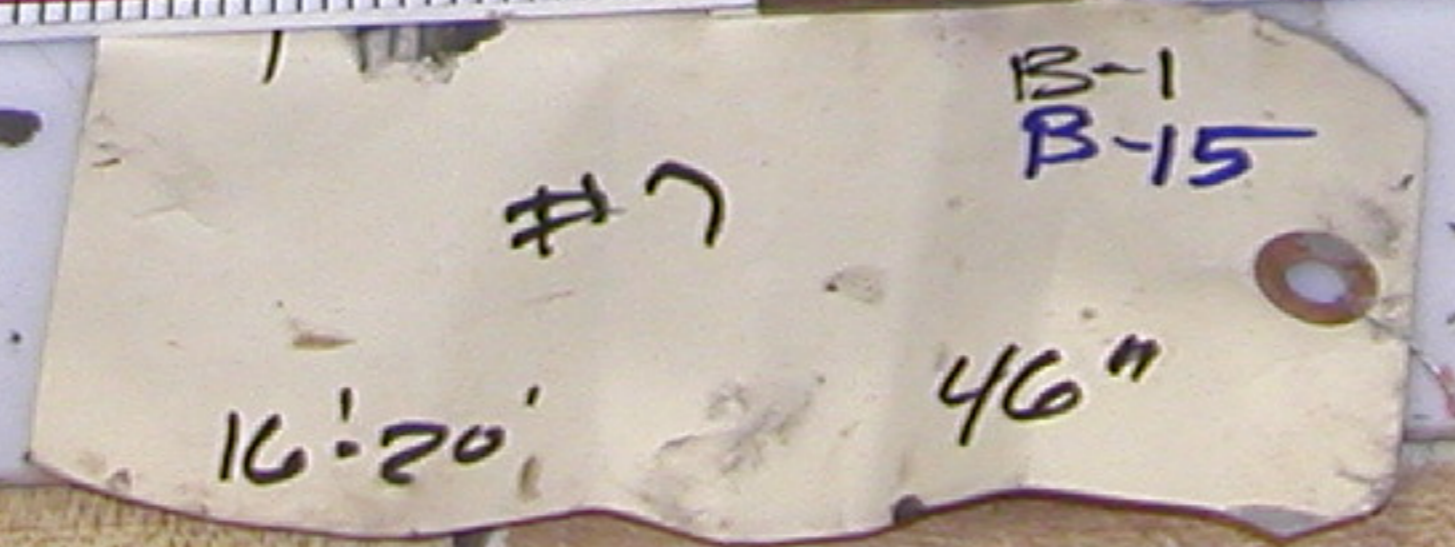
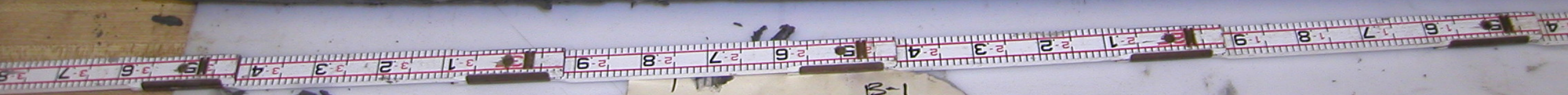
19115
11/11 0-6"

C B A



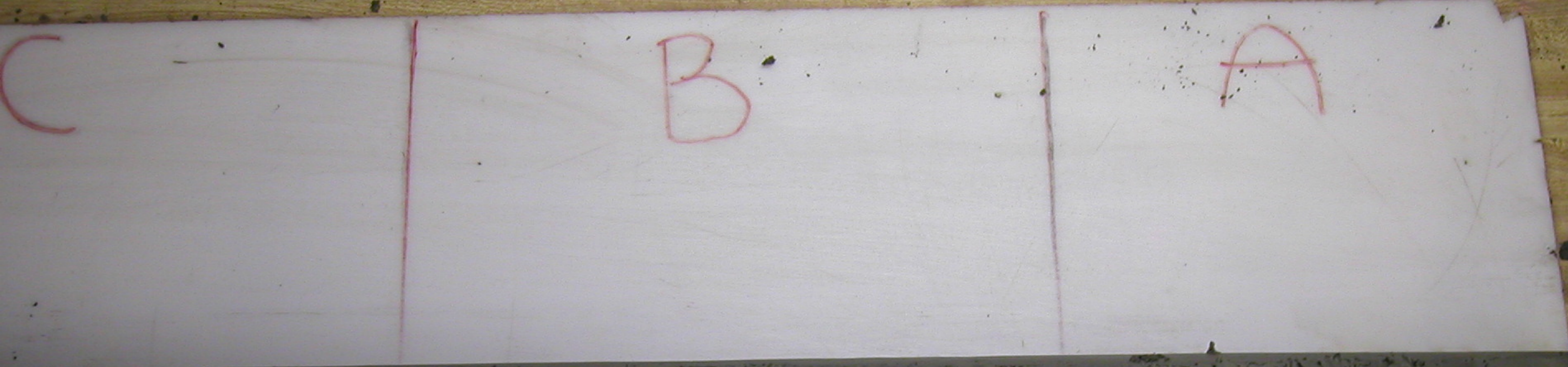
19115
#7
16'-20'
RD-1
B-15
46"





113 37.5-39'

36'



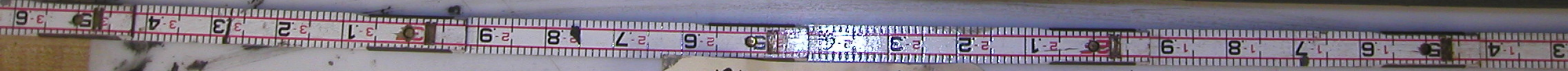
19115
 8#
 20'24'
 B-15
 46"



D

C

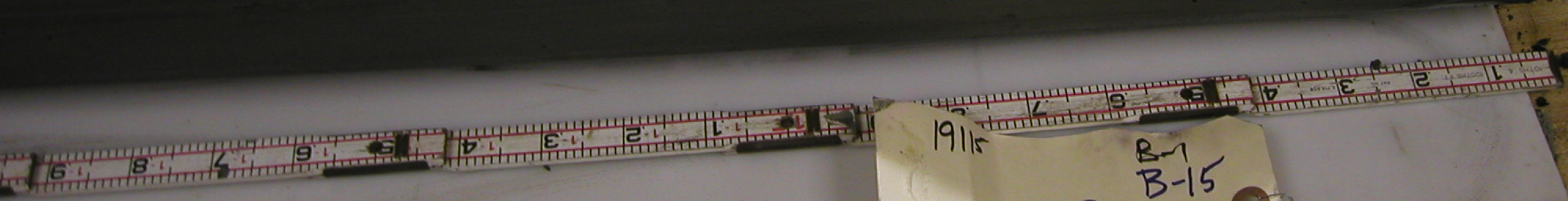
B



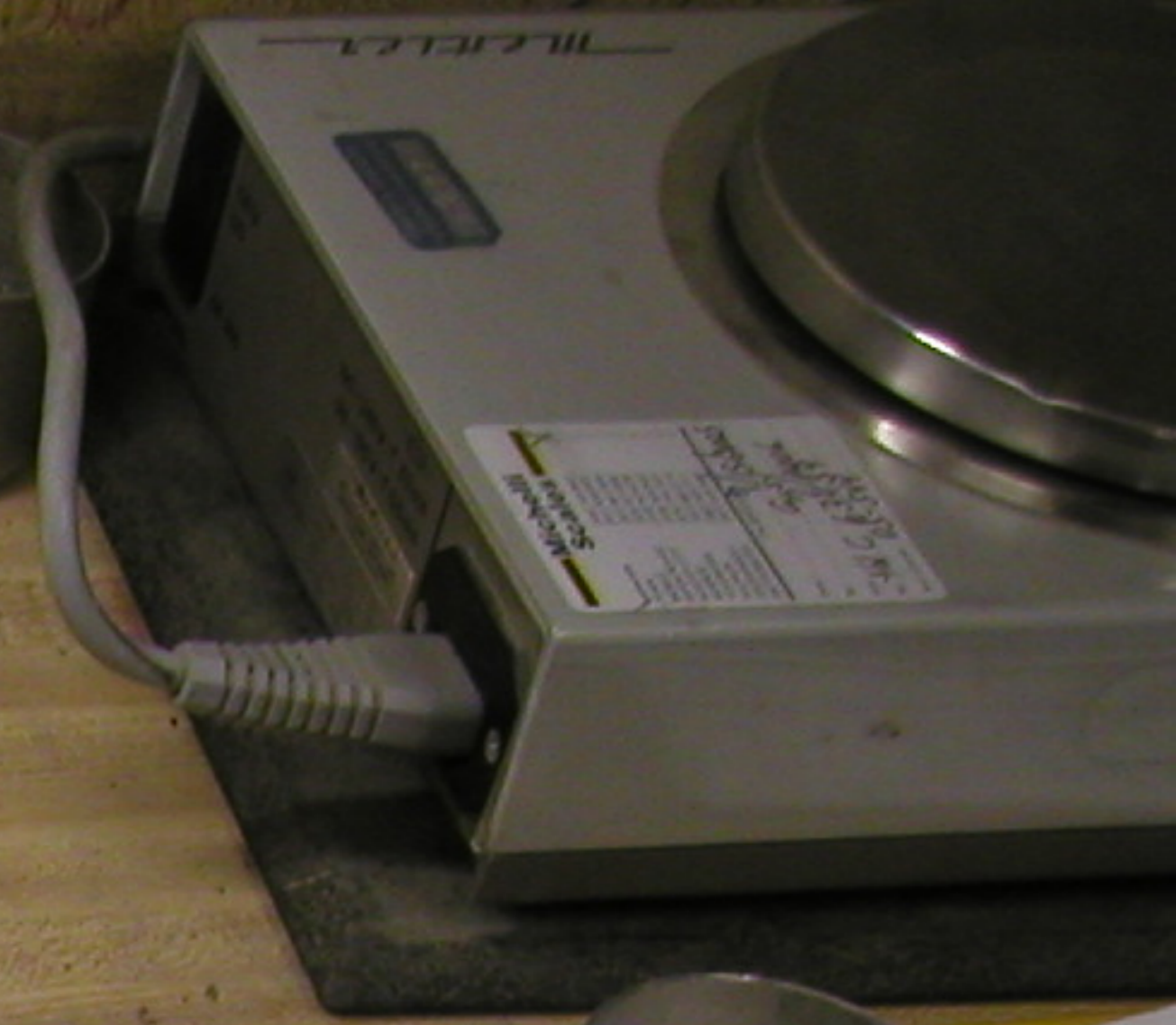
1915
#8
20'24'
B-1
B-15
46"

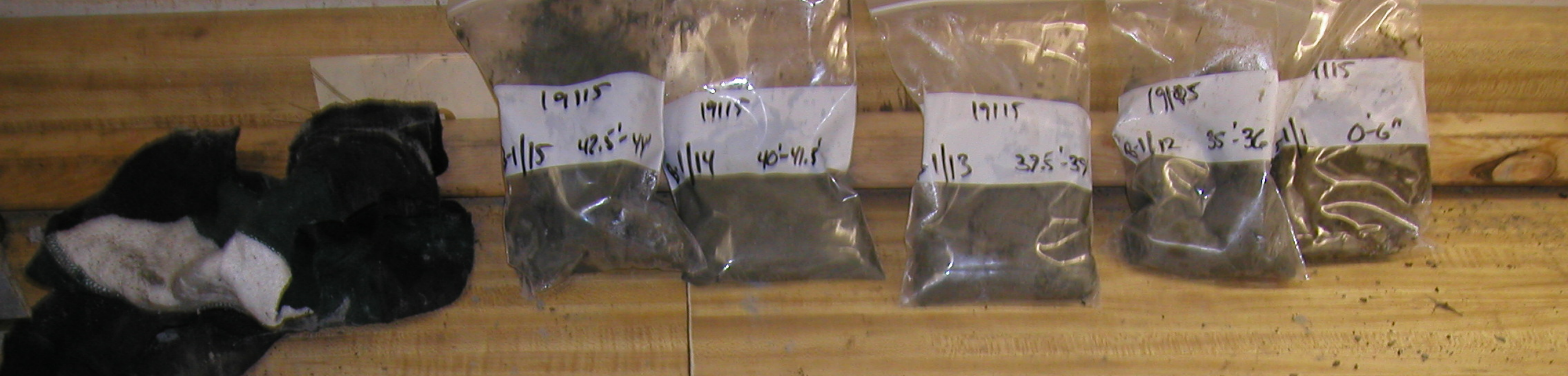
19115
1113 32.5'-39'
19105
1112 5'-36"
19115
1111 0-6"

B A



19115
#8
20'-24'
B-1
B-15
46"





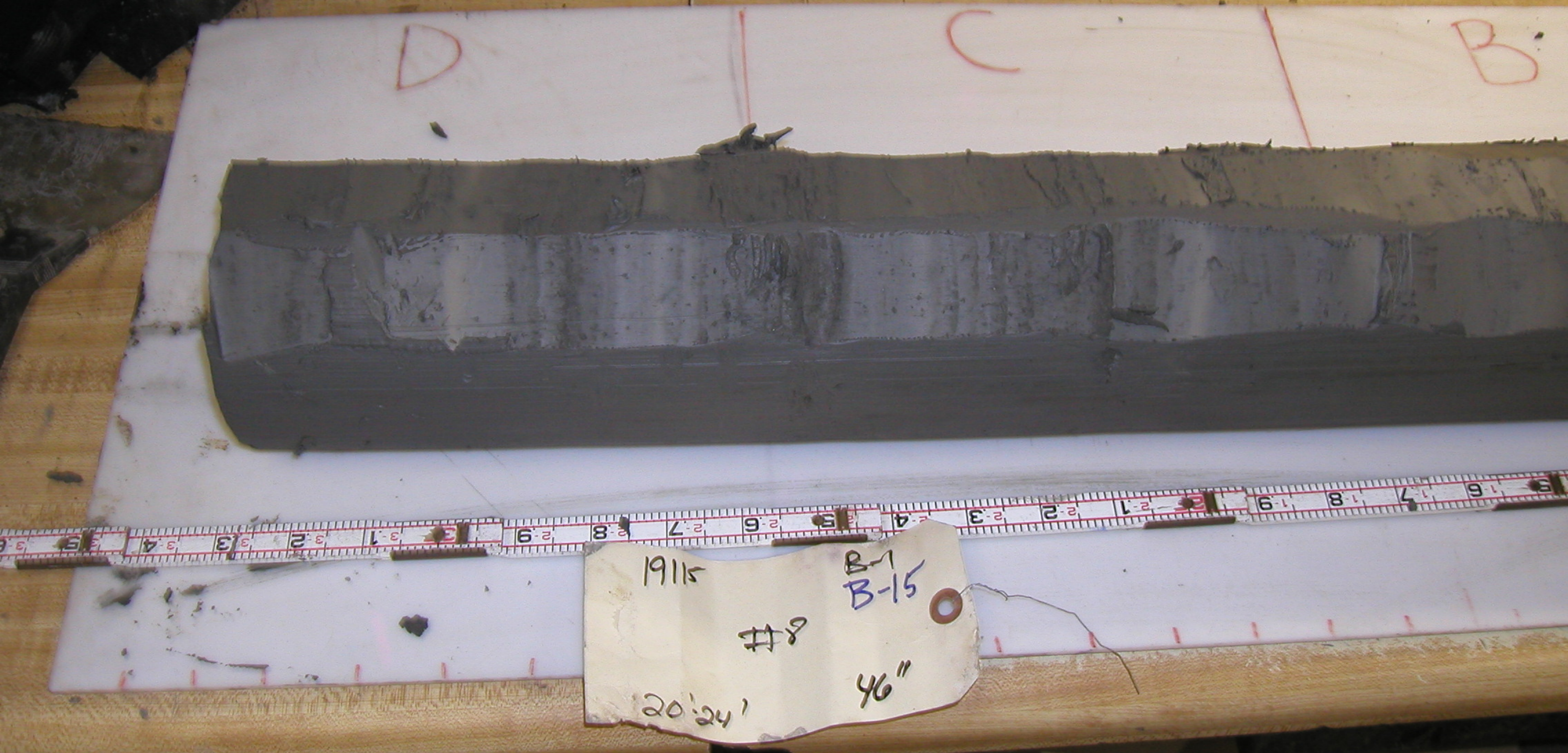
19115
11/15 42.5'-44'

19115
11/14 40'-41.5'

19115
11/13 37.5'-39'

19115
11/12 35'-36'

1115
11/11 0'-6"



D

C

B

19115
#8
20'-24'
B-15
46"

1113 375'-39'

1112 36'

C

B

A

8 3.9 4.0 4.1 4.2 4.3 4.4 4.5 4.6 4.7 4.8 4.9 5.0 5.1 5.2 5.3 5.4 5.5 5.6 5.7 5.8 5.9

1115 R. J.
9 B-15
24'-28' 43"



D

C

B



19115
9 B-15
24'-28'
43"

19115
32.5'-39'

1/12 5'-36'

0-6"

B A



19115
9 B-15
24'-28' 43%

GRAINGER
2011 0828 BY
JANUARY 2012



19115
1/15 42.5'-44'

19115
1/14 40'-41.5'

19115
1/13 37.5'-39'

19105
1/12 35'-36'

1115
1/11 0'-6"

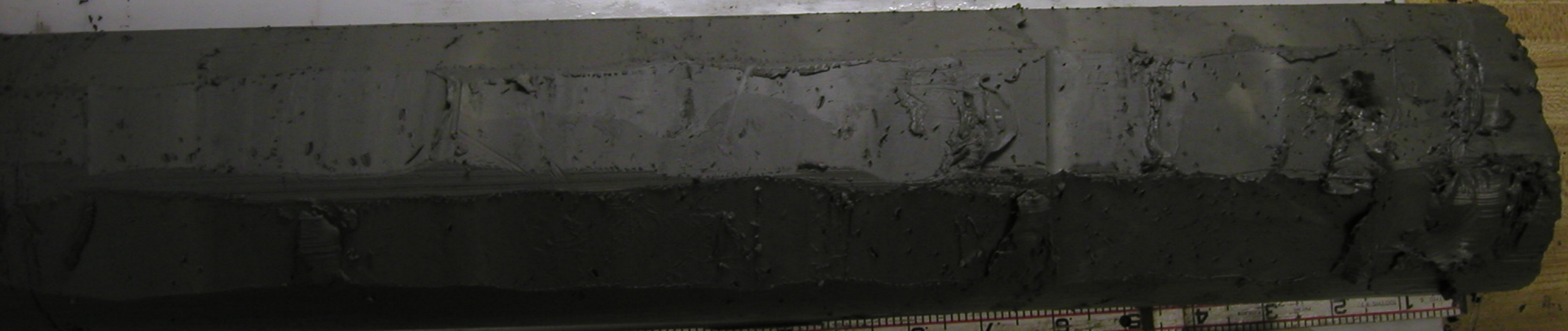
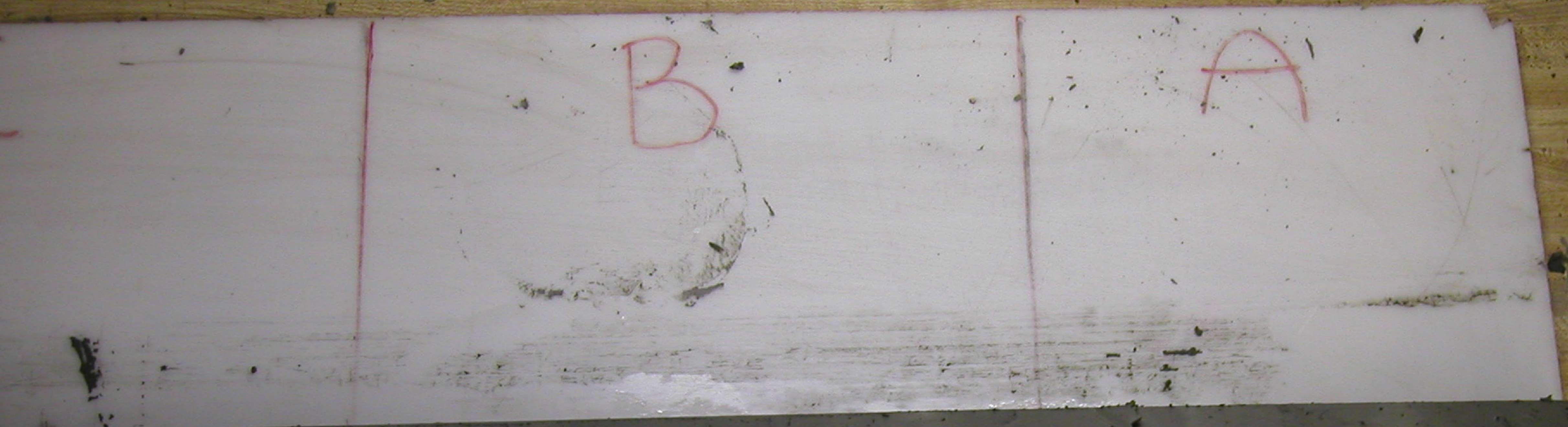
D

C

B



19115 B-1
9 B-15
24'-28' 43"



19115
 #10
 28'32

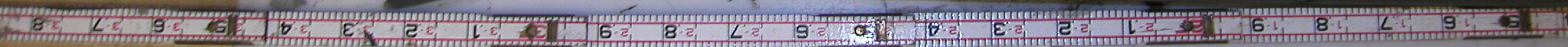
B-1
 B-15
 48"



D

C

19115
#10 B-1
28'-32" 48" B-15

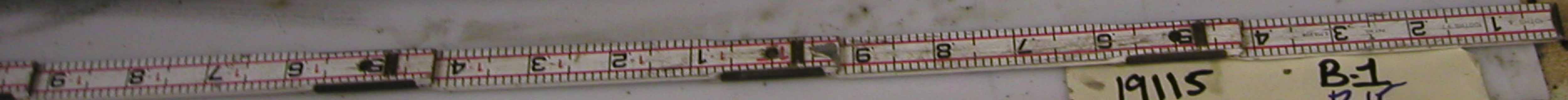


19115
11/13 32.5'-39'

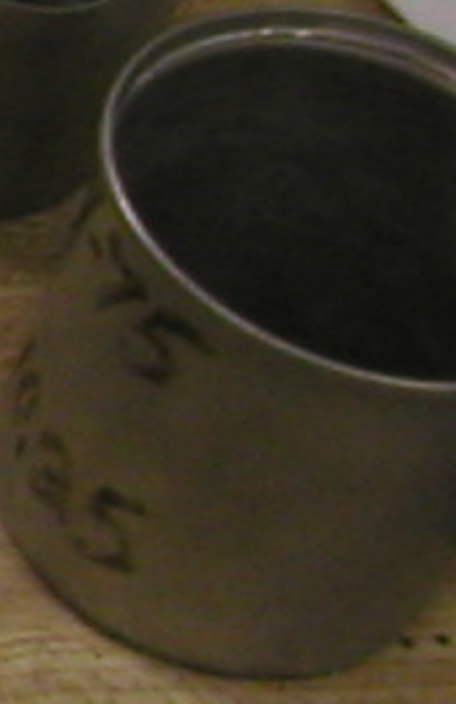
19115
11/12 5'-36'

19115
11/11 0-6"

C B A



19115
#10
28'-32'
B-1
B-15
48"



19115
51/15 42.5'-44'

19115
51/14 40'-41.5'

19115
51/13 37.5'-39'

19105
51/12 35'-36'

1115
51/11 0'-6"

D

C

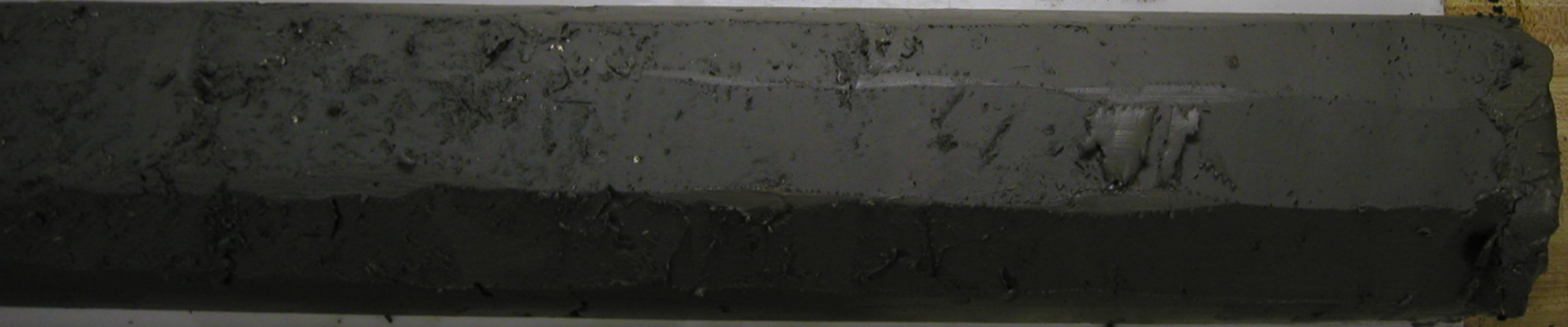
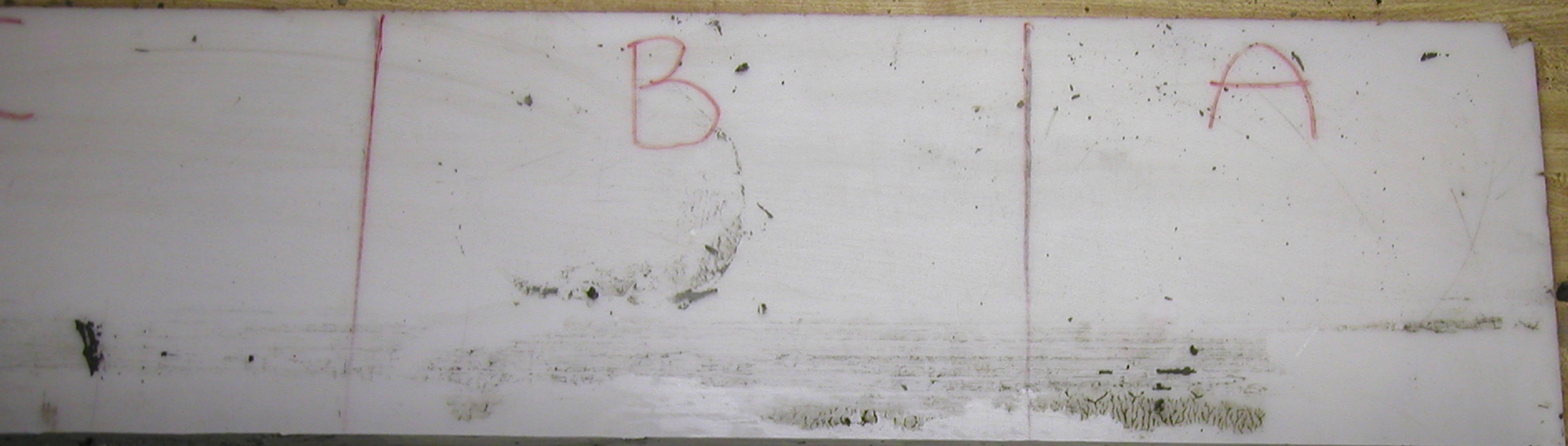
B

19115
#10
28'-32'

B-1
B-15

48"





19115
51191
#11
32'-35'
B-1
8-15
35"







19115
#11
32'-35'
BT
0-15
35"





19115
115 42.5-44

19115
114 40-41.5

19115
113 32.5-34

19115
112 31-36

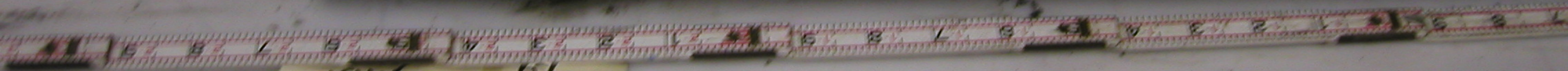
19115
0-10

D

C

B

A



19115
11
32'-35'
P1
6-15
35"