

Appendix B

IPET Public Website

In an effort to facilitate more efficient data searching, the taxonomy for the IPET Public Website has been reorganized according to Pre-Katrina and Post-Katrina data. While the Pre-Katrina data is still organized primarily according to New Orleans Hurricane Protection Projects and the type of data stored, the Post-Katrina data is currently organized as follows:

- (IPET) Interagency Performance Evaluation TaskForce
 - News Releases
 - Presentations
 - Reports
 - Soils
 - Structures
- Photographs
 - 17th Street 2005 Sep Oct Nov
 - 17th Street Slide Block Cores 2005 Oct Nov
 - 9th Ward
 - Bayou Bienvenue 2005.09(Sep)30 10(Oct)05 06
 - Bayou Dupree
 - Chef Menteur Hwy US 90
 - Entergy Plant – Paris Rd and GIWW 2005.09(Sep)
 - Helicopter Tour 2005.11(Nov)15
 - IHNC – Inner Harbor Navigation Canal
 - London Canal
 - MRGO
 - MRGO Air Product 2005.10(Oct)05
 - MRGO and GIWW Levee West Boh Bros Contr 2005 Sep and Oct
 - MS River Levee East Bank Vic Pointe A La Hache LA 2005Oct12
 - New Orleans Docks
 - Orleans Canal 2005.09(Sep)29 and 11(Nov)14
 - Orleans Canal Pumphouse 2005.09(Sep)30
 - Orleans Lakefront
 - Plaquemines Parish 2005 Nov

Users may view a list of the available documents, view a selected document in the website's view window or in a separate window, and download a specific file to their computer. Since most of the files posted on the site are in .pdf format,

a link to install the Adobe Acrobat Reader is provided. Also, a link to the New Orleans District Advertised Solicitations website is provided. A new feature was recently added to facilitate the collection of eyewitness account information via the public website.

As of 23 February, 2006, there were 2,344 documents/datasets posted to the IPET Public Website. Requests have been submitted for the approval to post additional documents/datasets to the Public Website. Since the Public website was opened on 2 November, 2005, the average daily number of hits to the Public Website is 91, while the average weekly number of hits is 612.

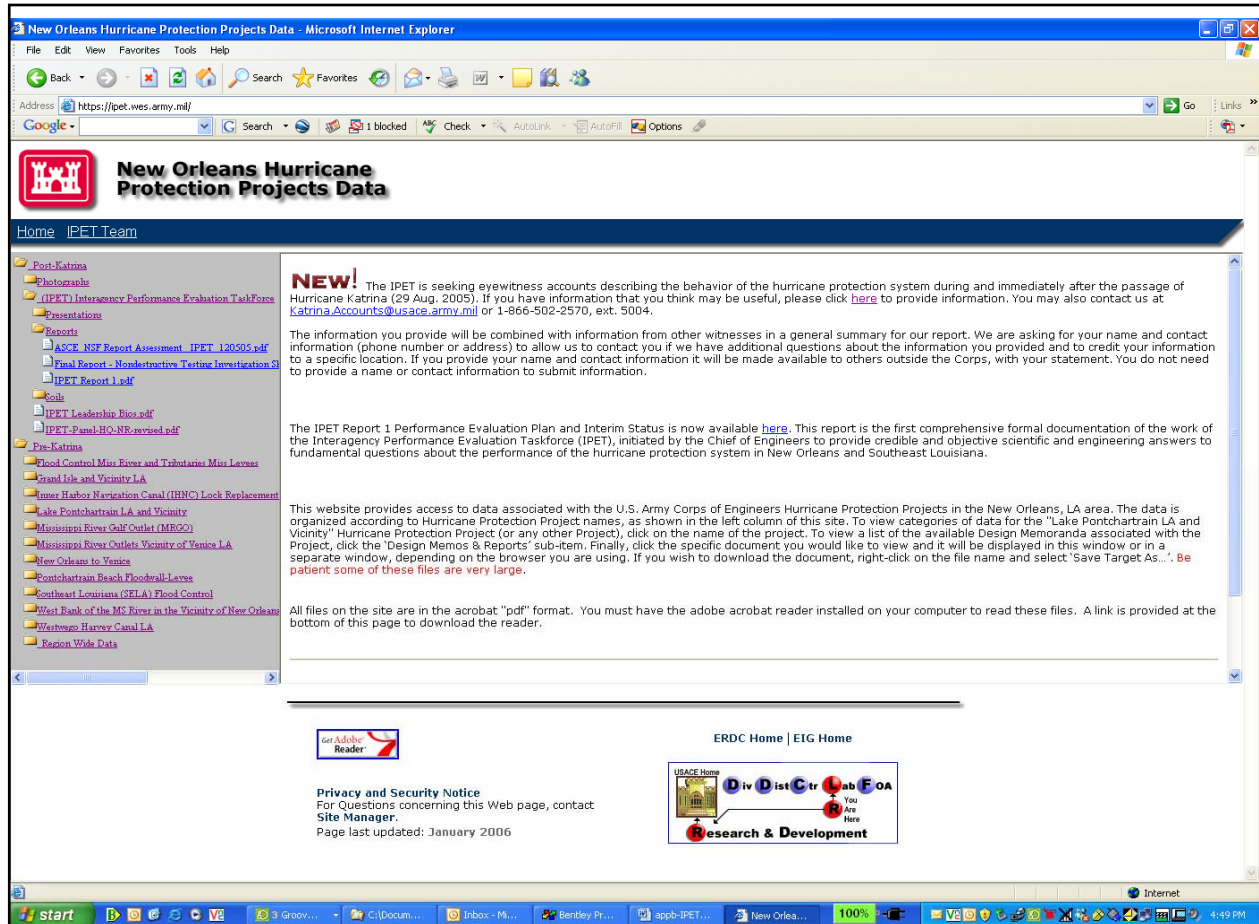


Figure B1. Screen capture of the frontpage of the New Orleans Hurricane Protection Projects Data website.

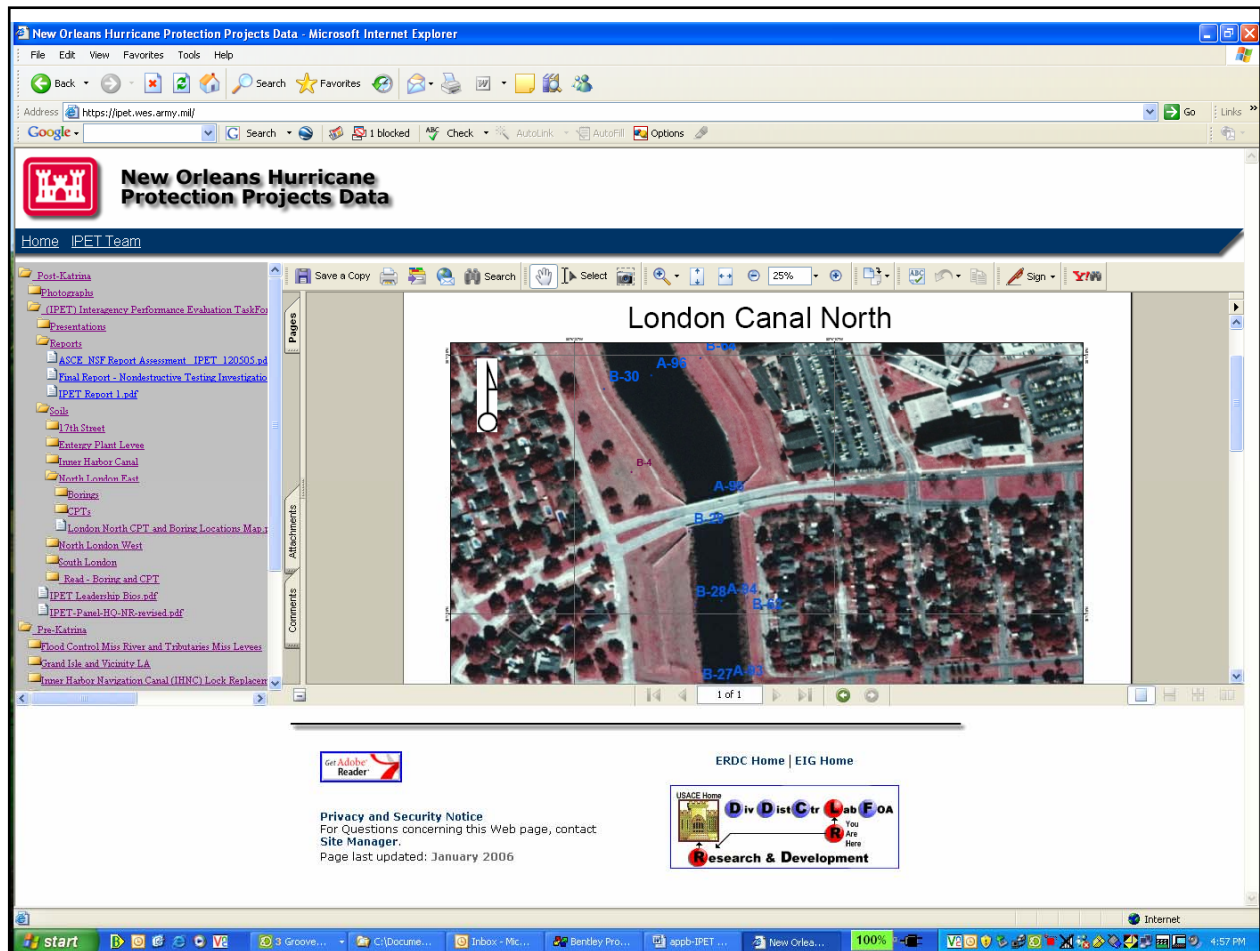


Figure B2. Screen capture of a document displayed in the view window of the New Orleans Hurricane Protection Projects Data website.

Users may view the date that a specific document was posted on the website by simply placing their mouse over the name of the document.

Metrics are collected daily on the number of hits to this website.