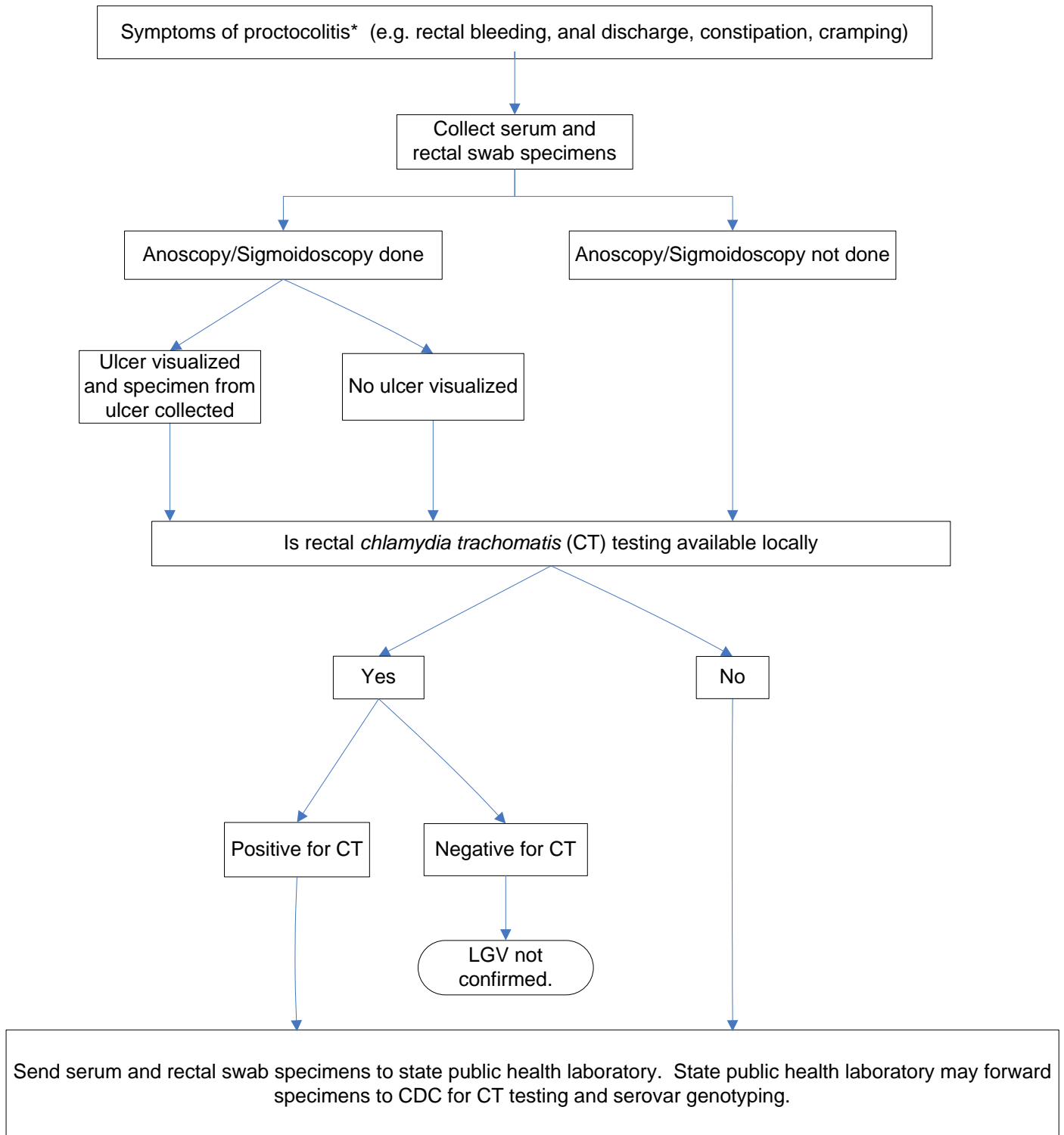


Laboratory Confirmation of Lymphogranuloma venereum (LGV) Proctocolitis Diagnosis



* For patients with classic LGV symptoms (e.g., genital papule or ulcer and inguinal lymphadenopathy) and for patients who are asymptomatic sex partners of LGV case patients, collect urethral (or urine) specimens and test locally for CT. If positive for CT, urethral/urine specimen and serum specimen may be sent to CDC for typing.