

EXHIBIT 3



Microsoft

roducing

Microsoft

95

Setting up Windows 95

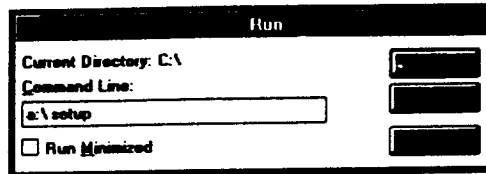
It's easy to set up Windows. There are two ways to do it, depending on whether you have an earlier version of Windows (version 3.x or Windows for Workgroups) on your computer.

To upgrade from an earlier version of Windows

- ▶ **1** Insert Setup Disk 1 in a floppy disk drive or your Windows CD-ROM in a CD-ROM drive.
- ▶ **2** In File Manager or Program Manager, click File, and then click Run.
- ▼ **3** Type the drive letter, followed by a colon (:), and a backslash (\), and the word setup. For example:

a:\setup

Note that if you install from a CD-ROM, precede the word "setup" with win95.



- ▶ **4** Follow the instructions on your screen. Click Next to continue through the Setup process.
-

If you do not have a previous version of Windows, use the following procedure.

To set up Windows from MS-DOS

- ▶ **1** Insert Setup Disk 1 in a floppy disk drive or your Windows CD-ROM in a CD-ROM drive.
- ▶ **2** At the command prompt, type the drive letter, followed by a colon (:), and a backslash (\), and the word setup. For example, your screen might look like this:

```
[c:\] a:\setup
```

Note that if you install from a CD-ROM, precede the word "setup" with win95.

- ▶ **3** Press ENTER, and then follow the instructions on your screen. Click Next to continue through the Setup process.
-

Setup prompts you to choose the type of installation you want. If you're not sure, choose the one that Windows selects for you. The following table describes these options.

This Setup option	Does this
Typical	Sets up the most commonly used Windows components.
Portable	Sets up features that are most useful for a portable computer, while conserving disk space. This includes power management features and Briefcase, a program that helps you synchronize files between laptop and desktop computers.
Compact	Sets up only the basic files you need to run Windows. This is useful if you have very limited disk space.
Custom	Enables you to choose exactly which components to install. If you are an advanced user or system administrator and want to customize your Windows installation, choose this option.

■ See Also

For more information about adding Windows components after you've installed Windows, see "If a Windows Component Isn't Available" in Chapter 4, "The Possibilities."

If you encounter problems setting up Windows, see the Setup.txt file that comes with Windows.

Index

? (question mark) button, using to get Help 12

A

Access control, setting up 50
 Access to your computer, restricting 50
 Accessibility for people with disabilities 78–81
 Accessibility Options shortcut keys 77
 Accessing online services
 by using HyperTerminal 65
 by using Microsoft Exchange 64
 by using The Microsoft Network 65
 Accessing remote computers by using HyperTerminal 65
 Accessing shared resources
 See also Network setup
 mapping drive letters to network resources 55
 opening shared folders 55
 overview of sharing resources 44
 printing from shared printers 55
 using Dial-Up Networking 56–57
 Accessing the Internet 58
 Accessories, where to find 67
 Adapter, setting up 46–47
 Add New Hardware wizard 36
 Add Printer wizard 32
 Add/Remove Programs 35
 Adding
 network software 46–47
 new folders 26
 new hardware 36
 new software 35
 printers 32–33
 shared resources 52–54
 shortcuts
 to the desktop 39
 to the StartUp folder 40–41
 Windows components 68
 Animations, viewing 60
 Applications *See* Programs
 Arranging open windows 7
 Arrow button on folder toolbars, using 23
 Audio cards, installing 36
 Audio cassettes of documentation, obtaining 80
 Audio compact discs, playing 60
 Autoexec.bat file xiii

B

Background pictures and patterns, displaying 61
 Backing up files
 as a regular maintenance procedure 62
 before setting up Windows 95 xiii
 Backup, using 62
 Bar at the bottom of the screen *See* Taskbar
 Blindness and low vision, support services for 80
 Booting your computer in troubleshooting mode 82–83
 Bootlog.txt file 83
 Briefcase, using 66
 Browsing through the network 45
 Bulletin boards, connecting to 65
 Buttons
 See also Start button
 for closing windows xi
 for getting Help information 12
 for quitting programs 6
 for sizing windows 72
 for viewing the previous folder 23
 on the taskbar
 appearing when programs start 5
 using to switch between programs 7
 Bypassing startup files 82–83

C

Capturing drive letters *See* Mapping drive letters
 to network resources
 Cards for new hardware, installing 36
 CDs
 playing 60
 viewing the contents of 20
 Checking for errors in disks, files, and folders 62
 Click, defined 70
 Client for Microsoft Networks 48
 Client for NetWare Networks 48
 Client, defined 48
 Clock on the taskbar, changing settings for 4
 Close button xi, 6
 Closing
 programs 6
 windows xi
 Colors, changing 61
 Commands on shortcut menus, displaying 70

Folder icons, illustrated 21
 Folder windows, working with 23
 Folders
 accessing shared folders 55
 checking for errors 62
 controlling access to 50
 copying
 by dragging 38
 by using the Edit menu 24
 by using the right mouse button 37
 creating 26
 deleting 25
 described 21
 finding 13
 moving
 by dragging 38
 by using the Edit menu 24
 by using the right mouse button 37
 navigating through 20–23
 opening
 by using My Computer 21
 by using Network Neighborhood 55
 by using shortcuts 39
 by using the Run command 15
 by using Windows Explorer 22
 previous folder, going back to 23
 saving files in 31
 sharing 50–52
 shortcuts to, creating 39
 viewing the hierarchy of 22
 Fragmentation of files, eliminating 63
 Full path, specifying 16
 Full-text search 12

G

Games
 playing Windows games 60
 running MS-DOS programs on a DriveSpace
 compressed drive 85
 Glossary 70
 Green text in Help topics 11
 Groups, appearing as folders ix, 5

H

Hard disk *See* Drives
 Hard-of-hearing, support services for 78
 Hardware
 changing hardware settings 14
 installing 36
 troubleshooting 82

Help troubleshooters, using 82
 Help, online 10–12
 Hidden window, switching to 7
 Hierarchy of folders, viewing 22
 Highlighting *See* Selecting
 HyperTerminal, using 65

I

Icons
 for disk drives, defined 20
 for files and folders
 changing the display of 23
 defined 21
 Identifying your computer on the network 48–49
 Inbox for Microsoft Exchange 64
 Index tab in Help, using to look up topics 11
 Installing
 hardware 36
 network software 46–47
 printers 32–33
 software 35, 68
 Windows 95 xiv–xv
 Windows components 68
 Internet, connecting to 58

K

Keyboard shortcuts 75–77

L

LAN Manager 48
 Laptop computer *See* Portable computer
 Links to documents and programs *See* Shortcuts
 Listing files and folders 22, 23
 Locating *See* Finding
 Location of files, specifying in the path 16
 Logging on to Windows or your network 2
 Long filenames 16
 Looking up topics in Help 11–12

M

Mail messages, exchanging
 by using Microsoft Exchange 64
 by using The Microsoft Network 65
 Mapping drive letters to network resources 55
 Maximizing windows 72
 Media Player, using 60
 Memory, troubleshooting 82