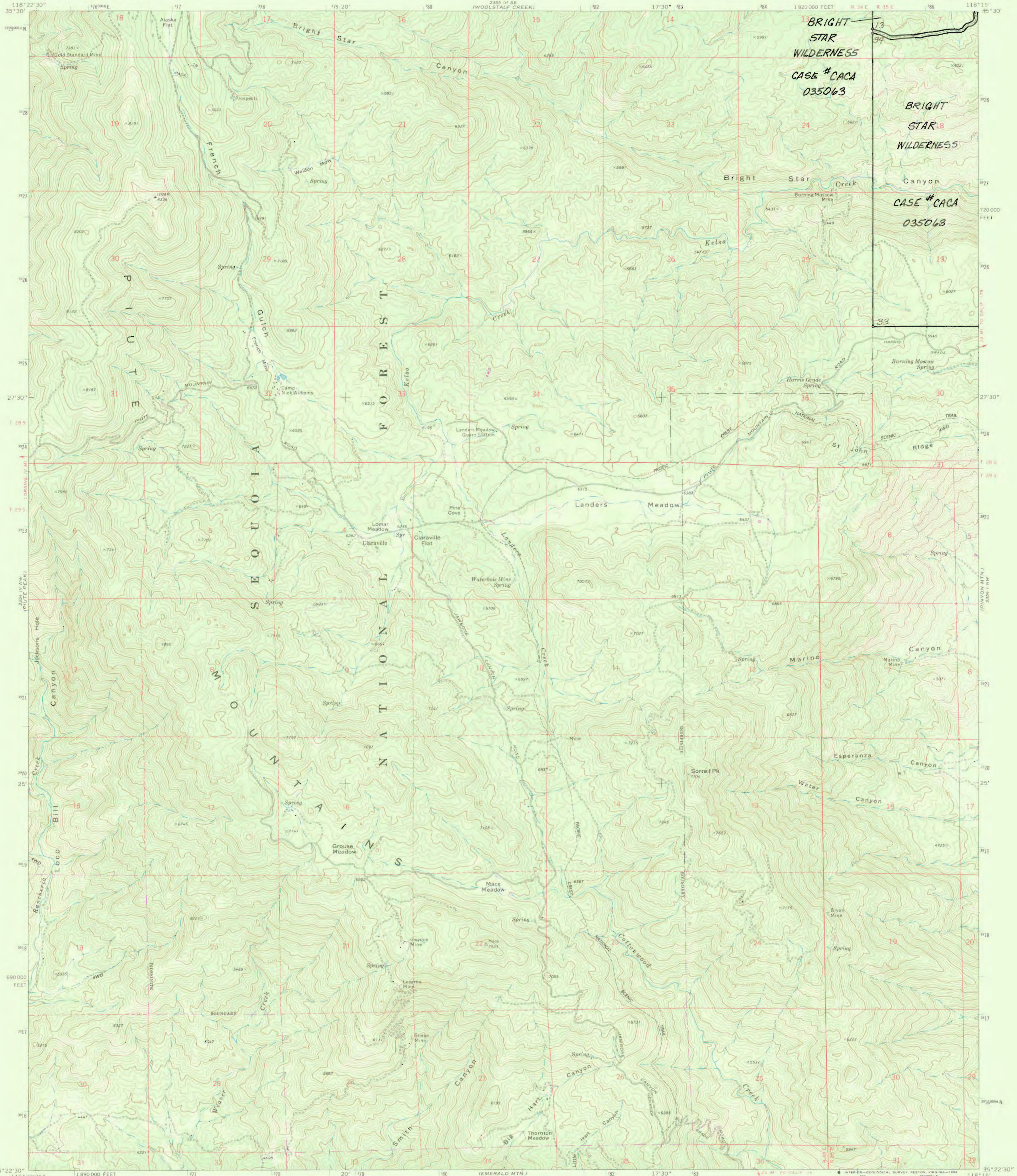
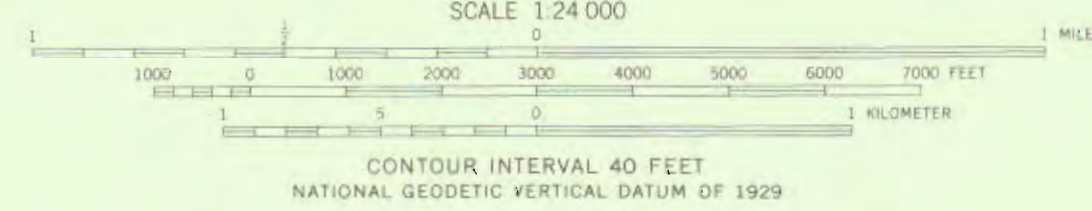


JUN 17 2005



Produced by the United States Geological Survey  
Control by USGS and NOS/NOAA  
Compiled from aerial photographs taken 1970. Field checked 1972  
North American Datum of 1927 (NAD 27). Projection and  
10000-foot ticks: California Coordinate System, zone 5.  
(Lambert Conformal Conic)  
Blue 1000-meter Universal Transverse Mercator ticks, zone 11  
North American Datum of 1983 (NAD 83) is shown by dashed  
corner ticks. The values of the shift between NAD 27 and NAD 83  
for 7.5-minute intersections are obtainable from National Geodetic  
Survey NADCON software  
There may be private inholdings within the boundaries of the  
National or State reservations shown on this map  
Certain land lines are omitted because of insufficient data  
Photospectored from 1989 source; no major culture or  
drainage changes observed. Boundaries verified and names  
revised 1994



**ORIGINAL**  
**FINAL**

ROAD CLASSIFICATION

Primary highway, hard surface	Light-duty road, hard or improved surface
Secondary highway, hard surface	Unimproved road
Interstate Route	U. S. Route
	State Route

THIS MAP COMPLIES WITH NATIONAL MAP ACCURACY STANDARDS  
FOR SALE BY U. S. GEOLOGICAL SURVEY, DENVER, COLORADO 80225, OR RESTON, VIRGINIA 22092  
A FOLDER DESCRIBING TOPOGRAPHIC MAPS AND SYMBOLS IS AVAILABLE ON REQUEST

QUADRANGLE LOCATION

CLARAVILLE, CA  
35118-D3-TF-024

1972  
PHOTOREVISED 1985  
MINOR REVISION 1994  
DMA 2354 IV NE-SERIES V895