

Amendment 29 to the Fishery Management Plan for BSAI King and Tanner Crabs

1. Revise the first sentence of the second paragraph of Section 5.0 to read as follows:

The BS/AI area is defined as those waters of the EEZ lying south of the Chukchi Sea statistical area as described in the coordinates to Figure 1 to 50 CFR part 679, east of the 1990 U.S./Russian maritime boundary line, and extending south of the Aleutian Islands for 200 miles between the convention line and Scotch Cap Light (164°44'36"W. longitude) (Figure 5.1). * * *

2. Insert Figure 5.1 after the second paragraph of Section 5.0 to read as follows.

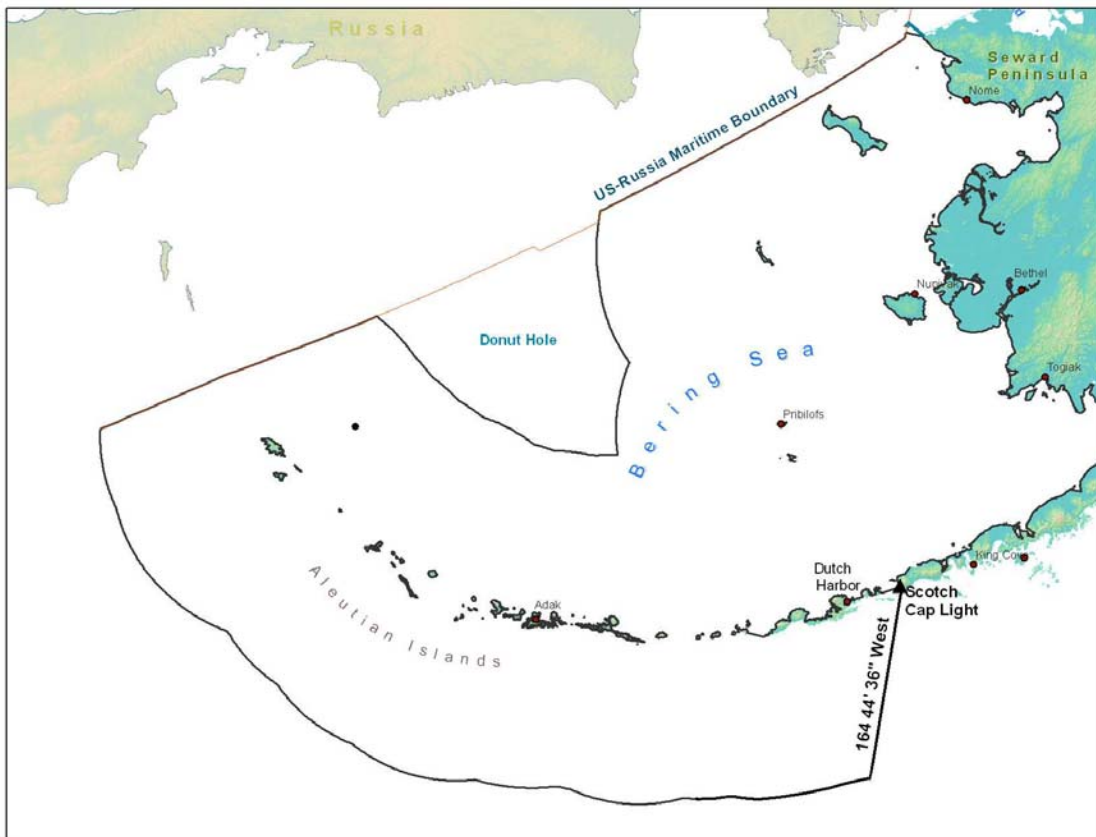


Figure 5.1 The BS/AI Area

3. In the introduction to Appendix H, add a note to read as follows:

The following descriptions of the statistical areas are adopted from Alaska State regulations. In the case of the Bering Sea Registration Area (Statistical Area Q) and some of its districts, the boundary descriptions extend into the Chukchi Sea to Point Hope. This FMP's jurisdiction ends at the southern boundary of the Chukchi Sea as described in the coordinates to Figure 1 to 50 CFR part 679.