



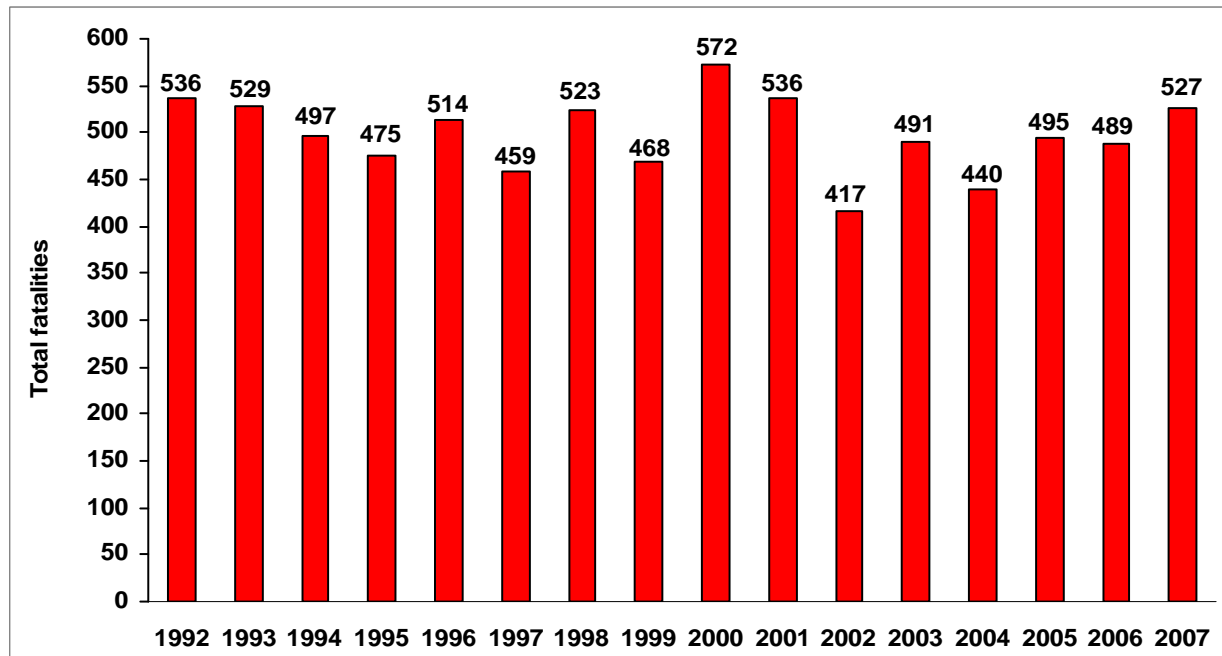
FOR FURTHER INFORMATION:  
Cheryl Abbot, Regional Economist  
(214) 767-6970  
<http://www.bls.gov/ro6/home.htm>

FOR RELEASE:  
December 31, 2008

## TEXAS WORKPLACE FATALITIES IN 2007

A total of 527 fatal work injuries were recorded in Texas during 2007, an increase of 38 from 2006, according to the Bureau of Labor Statistics of the U.S. Department of Labor. Please note that the 2007 results are preliminary; final results will be released in April 2009. Regional Commissioner Stanley W. Suchman noted that this was the highest number of work-related fatalities since 2001, but well below the series high of 572 reached in 2000. (See chart A.)

**Chart A. Total work-related fatalities in Texas by year, 1992-2007**



Note: Totals for 2007 are preliminary.

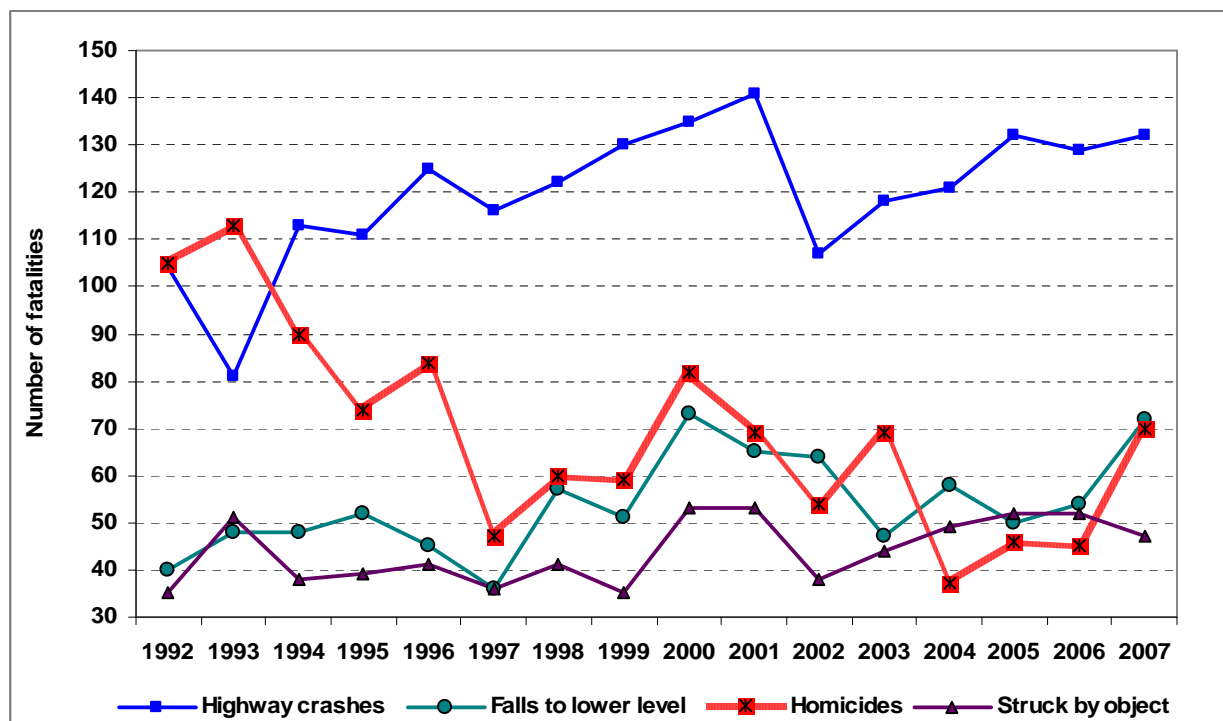
The most frequent events leading to workplace fatalities in Texas in 2007 were highway crashes (132), falls to a lower level (72), homicides (70), and being struck by an object (47). (See chart B.) Combined, these four events<sup>1</sup> accounted for 61 percent of all work-related fatalities in the State.

<sup>1</sup> Fatal events are categorized into several major groupings including transportation incidents, assaults and violent acts, and falls, among others. These major groups are further broken down into more detailed groups. See the Occupational Injury and Illness Classification System (OIICS) Manual at [www.bls.gov/iif/oshiccs.htm](http://www.bls.gov/iif/oshiccs.htm) for detailed information on the categories of fatalities used in this census.

Highway crashes remained the most frequent type of fatal workplace event for both the State and the nation in 2007. In Texas, highway crashes have led all other fatal events since 1994. The 132 fatal injuries resulting from highway crashes in Texas accounted for 25 percent of the statewide total in 2007. Nationally, this fatal event has led all others since the program's inception in 1992 and accounted for 24 percent of work-related deaths in 2007. (See tables A and B.)

Occupational fatalities caused by falls to a lower level rose substantially in 2007 accounting for 72 fatalities, up from 54 in 2006. The 2007 fatality count nearly matched the series high of 73 registered in 2000. Falls to a lower level represented 14 percent of all workplace fatalities in Texas; this event accounted for 13 percent of the national total.

**Chart B. The four most frequent work-related fatal events in Texas, 1992-2007**



Note: Totals for 2007 are preliminary.

Work-related homicides in Texas accounted for 70 fatalities in 2007, an increase of 25 (or 56 percent) over the previous year. The 2007 level resembled those experienced earlier in the decade, but was 38 percent below the peak of 113 reached in 1993. Work-related homicides accounted for 13 percent of on-the-job deaths statewide and 11 percent nationally.

Forty-seven fatalities in Texas resulted from workers being struck by an object in 2007, the lowest level since 2003 (44). These types of fatal work injuries accounted for 9 percent of on-the-job fatalities in both the State and the nation.

Other fatal workplace events in Texas in 2007 included contact with electric current (39), being struck by a vehicle or mobile equipment (32), and being caught in or compressed by equipment or objects (31). (See table 1.)

**Table A. Distribution of fatal occupational injuries in Texas by selected event, 1992-2007**

Year	Total fatalities	Highway crashes		Falls to lower level		Homicides		Struck by object	
		Number	Percent	Number	Percent	Number	Percent	Number	Percent
1992	536	104	19	40	7	105	20	35	7
1993	529	81	15	48	9	113	21	51	10
1994	497	113	23	48	10	90	18	38	8
1995	475	111	23	52	11	74	16	39	8
1996	514	125	24	45	9	84	16	41	8
1997	459	116	25	36	8	47	10	36	8
1998	523	122	23	57	11	60	11	41	8
1999	468	130	28	51	11	59	13	35	7
2000	572	135	24	73	13	82	14	53	9
2001	536	141	26	65	12	69	13	53	10
2002	417	107	26	64	15	54	13	38	9
2003	491	118	24	47	10	69	14	44	9
2004	440	121	28	58	13	37	8	49	11
2005	495	132	27	50	10	46	9	52	11
2006 <sup>1</sup>	489	129	26	54	11	45	9	52	11
2007 <sup>2</sup>	527	132	25	72	14	70	13	47	9

<sup>1</sup> Since the initial release of 2006 data, 3 additional job-related fatalities were identified in Texas bringing the 2006 total job-related fatality count to 489.

<sup>2</sup> Totals for 2007 are preliminary.

**Table B. Distribution of fatal occupational injuries in the U.S. by selected event, 1992-2007**

Year	Total fatalities	Highway crashes		Falls to lower level		Homicides		Struck by object	
		Number	Percent	Number	Percent	Number	Percent	Number	Percent
1992	6,217	1,158	19	507	8	1,044	17	557	9
1993	6,331	1,242	20	534	8	1,074	17	565	9
1994	6,632	1,343	20	580	9	1,080	16	591	9
1995	6,275	1,346	21	578	9	1,036	17	547	9
1996	6,202	1,346	22	610	10	927	15	582	9
1997	6,238	1,393	22	653	10	860	14	579	9
1998	6,055	1,442	24	625	10	714	12	520	9
1999	6,054	1,496	25	634	10	651	11	585	10
2000	5,920	1,365	23	659	11	677	11	571	10
2001 <sup>1</sup>	5,915	1,409	24	700	12	643	11	553	9
2002	5,534	1,373	25	638	12	609	11	505	9
2003	5,575	1,353	24	604	11	632	11	531	10
2004	5,764	1,398	24	738	13	559	10	602	10
2005	5,734	1,437	25	664	12	567	10	607	11
2006 <sup>2</sup>	5,840	1,356	23	738	13	540	9	589	10
2007 <sup>3</sup>	5,488	1,311	24	733	13	610	11	504	9

<sup>1</sup> Totals for 2001 exclude fatalities due to the September 11, 2001 terrorist attacks.

<sup>2</sup> The BLS news release issued August 9, 2007, reported a total of 5,703 fatal work injuries for calendar year 2006. Since then, an additional 137 job-related fatalities were identified bringing the 2006 total to 5,840.

<sup>3</sup> Totals for 2007 are preliminary.

## **U.S. Workplace Fatalities**

Nationwide, a total of 5,488 fatal work injuries were reported in 2007, a decrease of 6 percent from the revised total of 5,840 fatal work injuries recorded in 2006. While these results are preliminary, this figure represents the lowest annual total since the Census of Fatal Occupational Injuries (CFOI) program was first conducted in 1992. (See table B.) Highway crashes in 2007 accounted for nearly one out of every four fatal work injuries in the nation and continued to lead all other events in the frequency of on-the-job fatalities. Still, the 2007 count of 1,311 fatal highway crashes was the lowest annual total since 1993. The 2007 total of 733 fatal falls to a lower level was the third highest since the fatality census began, but was slightly lower than the 738 incidents recorded in 2006. The number of workers (504) who were fatally injured from being struck by objects or equipment in 2007 was at the lowest level since the fatality census began and represented a 14-percent decline from the 2006 total. Two other events were also at series lows in 2007—fatal work injuries involving electrocutions (212) and fatalities resulting from fires and explosions (151).

Workplace homicides in the United States rose 13 percent to 610 in 2007 after recording a series low of 540 in 2006. Even after the increase, workplace homicides have declined 44 percent from a series high of 1,080 in 1994. Workplace homicides involving police officers and supervisors of retail sales workers saw substantial increases in 2007.

### **Key characteristics of fatal work injuries in Texas:**

- Men accounted for 94 percent (493) of the work-related fatalities in Texas. Transportation incidents, which include highway, nonhighway, pedestrian, air, water, and rail fatalities, accounted for 36 percent of deaths among male workers and contact with objects and equipment made up 17 percent. Thirty-four women were fatally injured on-the-job, primarily as a result of assaults and violent acts and transportation incidents. Combined, these two events accounted for 88 percent of all worker fatalities among females. (See table 2.)
- In Texas, 46 percent of those who died from a workplace injury were non-Hispanic whites; 40 percent were Hispanics or Latinos; 11 percent were non-Hispanic blacks; and 2 percent were Asians. (Some worker fatalities were not identified by race or ethnic origin.) The most frequent cause of death among each of these worker groups, except Asians, was transportation incidents. For Asians, the primary cause of death was assaults and violent acts which accounted for 8 of the 11 total fatalities. (See table 2.)
- Workers 25-54 years old – the prime working age group – made up nearly two-thirds (341) of the State’s on-the-job fatalities in 2007. (See table 2.)
- Seventy-eight percent of workers killed on-the-job worked for wages and salaries and the remaining 22 percent were self-employed. (See table 2.)
- Two industry sectors accounted for 40 percent of workplace fatalities in the State – construction (141) and transportation and warehousing (72). In the construction industry, falls were responsible for slightly more than one-third of fatal injuries and transportation incidents made up one-fourth. In the transportation and warehousing industry, transportation incidents were the most prevalent cause of workplace deaths, accounting for two-thirds of all fatal injuries. (See table 3.)
- From an occupational perspective, construction and extraction jobs had the highest number of fatalities (153), followed by transportation and material moving jobs (108). Combined, these two groups accounted for 50 percent of all fatal work injuries in Texas. Falls was the most frequent cause of on-the-job fatalities among construction and extraction workers, while transportation incidents led all events within transportation and material moving occupations. (See table 4.)

Additional Census of Fatal Occupational Injuries data are available on the BLS Internet site at <http://www.bls.gov/iif/oshcfoi1.htm>. Data can be accessed in a number of ways. Selected current and historical information is available in PDF format. Detailed data may be accessed through the online query system located at <http://data.bls.gov/PDQ/outside.jsp?survey=fi> or via an extensive collection of flat text files. For further information on the Census of Fatal Occupational Injuries contact the Southwest Economic Analysis and Information Office at 214-767-6970 from 8:00 a.m. to 11:00 a.m. and 1:00 p.m. to 4:00 p.m. (CT).

## **Technical Note**

### Background of the program

The Census of Fatal Occupational Injuries, part of the BLS occupational safety and health statistics program, compiles a count of all fatal work injuries occurring in the U.S. in each calendar year. The program uses diverse State, federal, and independent data sources to identify, verify, and describe fatal work injuries. This assures counts are as complete and accurate as possible.

For technical information about the CFOI program, please go to the BLS Handbook of Methods on the BLS web site. To get to that document, click on Workplace Injuries on the BLS home page, scroll down to IIF Documentation, and then click on “BLS Handbook of Methods.” The technical information and definitions for the CFOI Program are in Chapter 9, Part 2 of the BLS Handbook of Methods.

### Federal/State agency coverage

The Census of Fatal Occupational Injuries includes data for all fatal work injuries, whether the decedent was working in a job covered by the Occupational Safety and Health Administration (OSHA) or other federal or State agencies or was outside the scope of regulatory coverage. Thus, any comparison between the BLS fatality census counts and those released by other agencies should take into account the different coverage requirements and definitions being used by each agency.

Several federal and State agencies have jurisdiction over workplace safety and health. OSHA and affiliated agencies in States with approved safety programs cover the largest portion of the nation's workers. However, injuries and illnesses occurring in certain industries or activities, such as coal, metal, and nonmetal mining and highway, water, rail, and air transportation, are excluded from OSHA coverage because they are covered by other federal agencies, such as the Mine Safety and Health Administration and various agencies within the Department of Transportation.

### Acknowledgments

BLS thanks the Texas Department of Labor's Division of Workers' Compensation for their efforts in collecting accurate, comprehensive, and useful data on fatal work injuries. BLS also appreciates the efforts of all federal, State, local, and private sector entities that submitted source documents used to identify fatal work injuries. Among these agencies are the Occupational Safety and Health Administration; the National Transportation Safety Board; the U.S. Coast Guard; the Mine Safety and Health Administration; the Employment Standards Administration (Federal Employees' Compensation and Longshore and Harbor Workers' divisions); the Federal Railroad Administration; the Department of Energy; State vital statistics registrars, coroners, and medical examiners; State departments of health, labor and industries, and workers' compensation agencies; State and local police departments; and State farm bureaus.

TABLE 1. Fatal occupational injuries by event or exposure and major private industry<sup>1</sup> sector, Texas, 2007

Event or exposure <sup>2</sup>	Total fatalities (number)	Goods producing				Service providing							
		Total goods producing	Natural resources and mining <sup>3</sup>	Construction	Manufacturing	Total service providing	Trade, transportation, & utilities	Information	Financial activities	Professional & business services	Education & health services	Leisure & hospitality	Other services
Total.....	527	247	68	141	38	231	115	3	11	46	11	29	16
Contact with objects and equipment.....	85	57	21	23	13	24	12	--	--	4	--	--	8
Struck by object or equipment.....	47	29	10	14	5	15	7	--	--	3	--	--	5
Struck by falling object or equipment.....	33	19	8	11	--	12	5	--	--	--	--	--	5
Struck by flying object.....	6	4	--	--	4	--	--	--	--	--	--	--	--
Struck by dislodged flying object, particle.....	3	--	--	--	--	--	--	--	--	--	--	--	--
Struck by swinging or slipping object.....	3	3	--	--	--	--	--	--	--	--	--	--	--
Struck by object or equipment, n.e.c.....	3	--	--	--	--	--	--	--	--	--	--	--	--
Caught in or compressed by equipment or objects.....	31	22	10	5	7	8	4	--	--	--	--	--	3
Caught in running equipment or machinery.....	20	18	8	4	6	--	--	--	--	--	--	--	--
Compressed or pinched by rolling, sliding, or shifting objects.....	5	--	--	--	--	--	--	--	--	--	--	--	--
Caught in or compressed by equipment or objects, n.e.c.....	6	--	--	--	--	4	--	--	--	--	--	--	--
Caught in or crushed in collapsing materials.....	7	6	--	4	--	--	--	--	--	--	--	--	--
Excavation or trenching cave-in.....	3	3	--	3	--	--	--	--	--	--	--	--	--
Caught in or crushed in collapsing structure.....	4	3	--	--	--	--	--	--	--	--	--	--	--
Falls.....	78	59	7	48	4	19	5	--	--	8	--	--	--
Fall to lower level.....	72	55	6	48	--	17	4	--	--	7	--	--	--
Fall from floor, dock, or ground level.....	7	7	--	6	--	--	--	--	--	--	--	--	--
Fall through existing floor opening.....	6	6	--	5	--	--	--	--	--	--	--	--	--
Fall from ladder.....	12	9	--	9	--	3	--	--	--	--	--	--	--
Fall from roof.....	14	12	--	11	--	--	--	--	--	--	--	--	--
Fall through existing roof opening.....	4	4	--	4	--	--	--	--	--	--	--	--	--
Fall from roof edge.....	6	4	--	4	--	--	--	--	--	--	--	--	--
Fall from scaffold, staging.....	15	15	--	13	--	--	--	--	--	--	--	--	--
Fall from nonmoving vehicle.....	10	5	--	3	--	5	3	--	--	--	--	--	--
Fall to lower level, n.e.c.....	10	5	--	5	--	5	--	--	--	4	--	--	--
Fall on same level.....	5	3	--	--	3	--	--	--	--	--	--	--	--
Fall to floor, walkway, or other surface.....	4	--	--	--	--	--	--	--	--	--	--	--	--
Bodily reaction and exertion.....	3	--	--	--	--	--	--	--	--	--	--	--	--
Bodily reaction.....	3	--	--	--	--	--	--	--	--	--	--	--	--
Exposure to harmful substances or environments.....	66	41	8	27	6	21	9	--	--	8	--	--	--
Contact with electric current.....	39	30	6	20	4	8	3	--	--	4	--	--	--
Contact with electric current of machine, tool, appliance, or light fixture.....	13	11	3	5	3	--	--	--	--	--	--	--	--
Contact with wiring, transformers, or other electrical components.....	10	10	--	9	--	--	--	--	--	--	--	--	--
Contact with overhead power lines.....	15	9	--	6	--	5	--	--	--	3	--	--	--
Contact with temperature extremes.....	3	--	--	--	--	--	--	--	--	--	--	--	--
Exposure to environmental heat.....	3	--	--	--	--	--	--	--	--	--	--	--	--
Exposure to caustic, noxious, or allergenic substances.....	16	7	--	3	--	8	5	--	--	--	--	--	--
Exposure to caustic, noxious, or allergenic substances, unspecified.....	3	--	--	--	--	--	--	--	--	--	--	--	--
Injections, stings, venomous bites.....	5	--	--	--	--	3	--	--	--	--	--	--	--
Ingestion of substance.....	5	3	--	--	--	--	--	--	--	--	--	--	--
Oxygen deficiency, n.e.c.....	8	--	--	--	--	5	--	--	--	--	--	--	--
Drowning, submersion.....	7	--	--	--	--	4	--	--	--	--	--	--	--
Transportation accidents.....	192	67	20	36	11	102	62	--	5	19	8	6	--
Highway accident.....	132	43	17	19	7	76	47	--	5	15	4	--	--
Collision between vehicles, mobile equipment.....	79	31	13	13	5	38	18	--	4	9	--	--	--
Moving in same direction.....	18	7	4	--	--	9	7	--	--	--	--	--	--
Moving in opposite directions, oncoming.....	36	14	5	7	--	18	6	--	--	5	--	--	--
Moving in intersection.....	11	5	--	--	--	4	--	--	--	--	--	--	--
Moving and standing vehicle, mobile equipment--in roadway.....	9	5	--	--	--	4	3	--	--	--	--	--	--
Vehicle struck object in roadway.....	4	--	--	--	--	4	4	--	--	--	--	--	--
Vehicle struck object on side of road.....	26	5	--	3	--	19	15	--	--	--	--	--	--
Noncollision accident.....	23	7	--	3	--	15	10	--	--	4	--	--	--
Jack-knifed or overturned--no collision.....	21	7	--	3	--	13	9	--	--	3	--	--	--
Nonhighway accident, except rail, air, water.....	16	7	--	4	--	6	4	--	--	--	--	--	--
Vehicle, mobile equipment struck stationary object.....	3	--	--	--	--	--	--	--	--	--	--	--	--
Noncollision accident.....	13	5	--	3	--	5	3	--	--	--	--	--	--
Overturned.....	8	3	--	3	--	3	--	--	--	--	--	--	--
Pedestrian, nonpassenger struck by vehicle, mobile equipment.....	32	15	--	11	3	13	7	--	--	3	--	--	--
Pedestrian struck by vehicle, mobile equipment in roadway.....	12	4	--	4	--	7	3	--	--	--	--	--	--
Pedestrian struck by vehicle, mobile equipment on side of road.....	6	--	--	--	--	--	--	--	--	--	--	--	--
Pedestrian struck by vehicle, mobile equipment in parking lot or non-roadway area.....	14	9	--	5	3	4	3	--	--	--	--	--	--
Water vehicle accident.....	6	--	--	--	--	4	3	--	--	--	--	--	--
Aircraft accident.....	5	--	--	--	--	--	--	--	--	--	--	--	--
Aircraft accident, n.e.c.....	3	--	--	--	--	--	--	--	--	--	--	--	--
Fires and explosions.....	17	11	6	--	3	4	--	--	--	--	--	--	3
Fire--unintended or uncontrolled.....	5	3	--	--	--	--	--	--	--	--	--	--	--
Fire, n.e.c.....	3	3	--	--	--	--	--	--	--	--	--	--	--
Explosion.....	12	8	5	--	--	4	--	--	--	--	--	--	3
Explosion of pressure vessel or piping.....	8	5	--	--	--	3	--	--	--	--	--	--	3
Explosion, n.e.c.....	4	--	--	--	--	--	--	--	--	--	--	--	--
Assaults and violent acts.....	86	10	6	3	--	60	26	--	4	7	--	19	3
Assaults and violent acts by person(s).....	70	--	--	--	--	53	23	--	4	5	--	18	--
Hitting, kicking, beating.....	3	--	--	--	--	--	--	--	--	--	--	--	--
Shooting.....	57	--	--	--	--	44	19	--	4	5	--	13	--
Stabbing.....	4	--	--	--	--	4	--	--	--	--	--	3	--
Assaults and violent acts by person(s), n.e.c.....	6	--	--	--	--	3	--	--	--	--	--	--	--
Self-inflicted injury.....	13	5	3	--	--	7	3	--	--	--	--	--	--
Suicide, attempted suicide.....	13	5	3	--	--	7	3	--	--	--	--	--	--
Assaults by animals.....	3	3	3	--	--	--	--	--	--	--	--	--	--
Assaults by animals, n.e.c.....	3	3	3	--	--	--	--	--	--	--	--	--	--

<sup>1</sup> Classified according to the North American Industry Classification System, 2002.

<sup>2</sup> Based on the 1992 BLS Occupational Injury and Illness Classification Manual.

<sup>3</sup> Includes fatalities at all establishments categorized as Mining (Sector 21) in the North American Industry Classification System, 2002, including establishments not governed by the Mine Safety and Health Administration (MSHA) rules and reporting, such as those in Oil and Gas Extraction.

NOTE: Totals for major categories may include subcategories not shown separately. Dashes indicate no data reported or data that do not meet publication criteria. n.e.c. means "not elsewhere classified." Data for 2007 are preliminary.

SOURCE: U.S. Department of Labor, Bureau of Labor Statistics, in cooperation with State and Federal agencies, Census of Fatal Occupational Injuries

**Table 2. Fatal occupational injuries by worker characteristics and event or exposure, Texas, 2007**

Worker characteristics	Total fatalities (number)	Event or exposure <sup>1</sup>					
		Transportation incidents <sup>2</sup>	Assaults and violent acts <sup>3</sup>	Contact with objects and equipment	Falls	Exposure to harmful substances or environments	Fires and explosions
Total.....	527	192	86	85	78	66	17
<b>Employee Status</b>							
Wage and Salary Workers <sup>4</sup> .....	411	164	58	65	52	53	16
Self-employed <sup>5</sup> .....	116	28	28	20	26	13	--
<b>Gender</b>							
Men.....	493	178	70	84	76	66	17
Women.....	34	14	16	--	--	--	--
<b>Age</b>							
Under 16 years.....	--	--	--	--	--	--	--
16 to 17 years.....	--	--	--	--	--	--	--
18 to 19 years.....	14	4	--	--	--	4	--
20 to 24 years.....	66	25	7	14	10	9	--
25 to 34 years.....	109	40	17	16	15	15	5
35 to 44 years.....	107	39	19	18	14	15	--
45 to 54 years.....	125	44	18	22	19	16	4
55 to 64 years.....	74	28	19	8	11	4	4
65 years and over.....	32	12	4	5	8	3	--
<b>Race or Ethnic Origin<sup>6</sup></b>							
White, non-Hispanic.....	243	94	38	32	34	38	6
Black, non-Hispanic.....	59	25	18	6	3	4	--
Hispanic or Latino.....	211	71	22	45	41	22	9
American Indian or Alaska Native.....	--	--	--	--	--	--	--
Asian.....	11	--	8	--	--	--	--
Native Hawaiian or Pacific Islander.....	--	--	--	--	--	--	--

<sup>1</sup> Based on the 1992 BLS Occupational Injury and Illness Classification Manual.

<sup>2</sup> Includes highway, nonhighway, air, water, rail fatalities, and fatalities resulting from being struck by a vehicle.

<sup>3</sup> Includes violence by persons, self-inflicted injury, and attacks by animals.

<sup>4</sup> May include volunteers and workers receiving other types of compensation.

<sup>5</sup> Includes self-employed workers, owners of unincorporated businesses and farms, paid and unpaid family workers, and may include some owners of incorporated businesses or members of partnerships.

<sup>6</sup> Persons identified as Hispanic or Latino may be of any race. The race categories shown exclude data for Hispanics and Latinos.

NOTE: Totals for major categories may include subcategories not shown separately. Dashes indicate no data reported or data that do not meet publication criteria. Data for 2007 are preliminary.

SOURCE: U.S. Department of Labor, Bureau of Labor Statistics, in cooperation with State and Federal agencies, Census of Fatal Occupational Injuries

**TABLE 3. Fatal occupational injuries by industry and event or exposure, Texas, 2007**

Industry <sup>1</sup>	NAICS code <sup>1</sup>	Total fatalities (number)	Event or exposure <sup>2</sup>					
			Transportation incidents <sup>3</sup>	Assaults & violent acts <sup>4</sup>	Contact with objects & equipment	Falls	Exposure to harmful substances or environments	Fires & explosions
<b>Total</b> .....		527	192	86	85	78	66	17
<b>Private Industry</b> .....		478	169	70	81	78	62	15
<b>Goods Producing</b> .....		247	67	10	57	59	41	11
<b>Natural Resources and Mining</b> .....		68	20	6	21	7	8	6
<b>Agriculture, Forestry, Fishing and Hunting</b> .....	11	19	4	5	5	3	--	--
Animal Production.....	112	10	--	5	--	--	--	--
Cattle Ranching and Farming.....	1121	9	--	5	--	--	--	--
Beef Cattle Ranching and Farming, including Feedlots.....	11211	6	--	3	--	--	--	--
Beef Cattle Ranching and Farming.....	112111	6	--	3	--	--	--	--
Support Activities for Agriculture and Forestry.....	115	5	--	--	--	--	--	--
Support Activities for Crop Production.....	1151	5	--	--	--	--	--	--
Support Activities for Crop Production.....	11511	5	--	--	--	--	--	--
Cotton Ginning.....	115111	3	--	--	--	--	--	--
<b>Mining</b> <sup>5</sup> .....	21	49	16	--	16	4	6	6
Support Activities for Mining.....	213	46	16	--	15	4	6	4
Support Activities for Mining.....	2131	46	16	--	15	4	6	4
Support Activities for Mining.....	21311	46	16	--	15	4	6	4
Drilling Oil and Gas Wells.....	213111	17	5	--	6	3	3	--
Support Activities for Oil and Gas Operations.....	213112	29	11	--	9	--	--	4
<b>Construction</b> .....		141	36	3	23	48	27	--
<b>Construction</b> .....	23	141	36	3	23	48	27	--
Construction of buildings.....	236	22	5	--	3	9	4	--
Residential Building Construction.....	2361	10	--	--	--	6	--	--
Residential Building Construction.....	23611	10	--	--	--	6	--	--
New Single-family Housing Construction (except operative builders).....	236115	4	--	--	--	--	--	--
New Multi-family Housing Construction (except operative builders).....	236116	3	--	--	--	--	--	--
Residential Remodelers.....	236118	3	--	--	--	--	--	--
Nonresidential Building Construction.....	2362	12	5	--	--	3	--	--
Industrial Building Construction.....	23621	3	--	--	--	--	--	--
Commercial and Institutional Building Construction.....	23622	9	5	--	--	--	--	--
Heavy and Civil Engineering Construction.....	237	32	16	--	9	--	4	--
Utility System Construction.....	2371	15	5	--	6	--	3	--
Water and Sewer Line and Related Structures Construction.....	23711	9	--	--	5	--	3	--
Oil and Gas Pipeline and Related Structures Construction.....	23712	5	3	--	--	--	--	--
Highway, Street, and Bridge Construction.....	2373	14	10	--	--	--	--	--
Highway, Street, and Bridge Construction.....	23731	14	10	--	--	--	--	--
Other Heavy and Civil Engineering Construction.....	2379	3	--	--	--	--	--	--
Other Heavy and Civil Engineering Construction.....	23799	3	--	--	--	--	--	--
Specialty Trade Contractors.....	238	87	15	3	11	37	19	--
Foundation, Structure, and Building Exterior Contractors.....	2381	34	3	--	5	19	6	--
Poured Concrete Foundation and Structure contractors.....	23811	6	--	--	--	--	3	--
Residential Poured Concrete Foundation and Structure Contractors.....	238111	3	--	--	--	--	--	--
Nonresidential Poured Concrete Foundation and Structure Contractors.....	238112	3	--	--	--	--	--	--
Structural Steel and Precast Concrete Contractors.....	23812	5	--	--	--	3	--	--
Nonresidential Structural Steel and Precast Concrete Contractors.....	238122	5	--	--	--	3	--	--
Framing Contractors.....	23813	8	--	--	--	6	--	--
Residential Framing Contractors.....	238131	6	--	--	--	4	--	--
Roofing Contractors.....	23816	11	--	--	--	6	3	--
Residential Roofing Contractors.....	238161	6	--	--	--	3	--	--
Nonresidential Roofing Contractors.....	238162	5	--	--	--	3	--	--
Building Equipment Contractors.....	2382	21	3	--	--	4	11	--
Electrical Contractors.....	23821	13	--	--	--	--	9	--
Nonresidential Electrical Contractors.....	238212	12	--	--	--	--	9	--
Plumbing, Heating, and Air-Conditioning Contractors.....	23822	7	--	--	--	--	--	--
Residential Plumbing, Heating, and Air-Conditioning Contractors.....	238221	4	--	--	--	--	--	--
Nonresidential Plumbing, Heating, and Air-Conditioning Contractors.....	238222	3	--	--	--	--	--	--
Building Finishing Contractors.....	2383	16	--	--	--	11	--	--
Drywall and Insulation Contractors.....	23831	7	--	--	--	6	--	--
Nonresidential Drywall and Insulation Contractors.....	238312	4	--	--	--	4	--	--
Painting and Wall Covering Contractors.....	23832	5	--	--	--	3	--	--
Nonresidential Painting and Wall Covering Contractors.....	238322	4	--	--	--	--	--	--
Finish Carpentry Contractors.....	23835	4	--	--	--	--	--	--
Residential Finish Carpentry Contractors.....	238351	3	--	--	--	--	--	--
Other Specialty Trade Contractors.....	2389	16	8	--	4	3	--	--
Site Preparation Contractors.....	23891	11	5	--	4	--	--	--
Other Residential Site Preparation Contractors.....	238911	5	3	--	--	--	--	--
Other Nonresidential Site Preparation Contractors.....	238912	6	--	--	3	--	--	--
All Other Special Trade Contractors.....	23899	5	3	--	--	--	--	--
All Other Nonresidential Special Trade Contractors.....	238992	4	--	--	--	--	--	--
<b>Manufacturing</b> .....		38	11	--	13	4	6	3
<b>Manufacturing</b> .....	31-33	38	11	--	13	4	6	3
Food Manufacturing.....	311	3	--	--	--	--	--	--

See footnotes at end of table.



**TABLE 3. Fatal occupational injuries by industry and event or exposure, Texas, 2007 - continued**

Industry <sup>1</sup>	NAICS code <sup>1</sup>	Total fatalities (number)	Event or exposure <sup>2</sup>					
			Transportation incidents <sup>3</sup>	Assaults & violent acts <sup>4</sup>	Contact with objects & equipment	Falls	Exposure to harmful substances or environments	Fires & explosions
Wood Product Manufacturing.....	321	3	--	--	3	--	--	--
Printing and Related Support Activities.....	323	3	--	--	--	--	--	--
Printing and Related Support Activities.....	3231	3	--	--	--	--	--	--
Printing.....	32311	3	--	--	--	--	--	--
Primary Metal Manufacturing.....	331	6	--	--	--	--	--	--
Iron and Steel Mills and Ferroalloy Manufacturing.....	3311	3	--	--	--	--	--	--
Iron and Steel Mills and Ferroalloy Manufacturing.....	33111	3	--	--	--	--	--	--
Iron and Steel Mills.....	331111	3	--	--	--	--	--	--
Fabricated Metal Product Manufacturing.....	332	9	3	--	3	--	--	--
Boiler, Tank, and Shipping Container Manufacturing.....	3324	3	--	--	--	--	--	--
<b>Service providing.....</b>		231	102	60	24	19	21	4
<b>Trade, Transportation, and Utilities.....</b>		115	62	26	12	5	9	--
<b>Wholesale Trade.....</b>	42	16	8	--	4	--	--	--
Merchant Wholesalers, Durable Goods.....	423	8	3	--	4	--	--	--
Lumber and Other Construction Materials Merchant wholesalers.....	4233	4	--	--	--	--	--	--
Merchant Wholesalers, Nondurable Goods.....	424	7	5	--	--	--	--	--
Petroleum and Petroleum Products Merchant wholesalers.....	4247	3	3	--	--	--	--	--
Petroleum and Petroleum Products Merchant wholesalers (except Bulk Stations and Terminals).....	42472	3	3	--	--	--	--	--
<b>Retail Trade.....</b>	44-45	24	5	17	--	--	--	--
Motor Vehicle and Parts Dealers.....	441	3	--	--	--	--	--	--
Food and Beverage Stores.....	445	6	--	5	--	--	--	--
Grocery Stores.....	4451	5	--	4	--	--	--	--
Convenience Stores.....	44512	4	--	4	--	--	--	--
Gasoline Stations.....	447	5	--	5	--	--	--	--
Gasoline Stations.....	4471	5	--	5	--	--	--	--
Gasoline Stations with Convenience Stores.....	44711	5	--	5	--	--	--	--
<b>Transportation and Warehousing.....</b>	48-49	72	48	8	7	4	5	--
Truck Transportation.....	484	49	36	3	5	--	3	--
General Freight Trucking.....	4841	36	27	3	--	--	3	--
General Freight Trucking, Long-Distance.....	48412	35	26	3	--	--	3	--
General Freight Trucking, Long-Distance, Truckload.....	484121	33	25	3	--	--	--	--
Specialized Freight Trucking.....	4842	13	9	--	3	--	--	--
Specialized Freight (except Used Goods) Trucking, Local.....	48422	8	6	--	--	--	--	--
Specialized Freight (except Used Goods) Trucking, Long-Distance.....	48423	4	--	--	--	--	--	--
Transit and Ground Passenger Transportation.....	485	4	--	4	--	--	--	--
Taxi and Limousine Service.....	4853	4	--	4	--	--	--	--
Taxi Service.....	48531	4	--	4	--	--	--	--
Support Activities for Transportation.....	488	11	8	--	--	--	--	--
Support Activities for Water Transportation.....	4883	5	5	--	--	--	--	--
Marine Cargo Handling.....	48832	3	3	--	--	--	--	--
Support Activities for Road Transportation.....	4884	6	3	--	--	--	--	--
Motor Vehicle Towing.....	48841	5	--	--	--	--	--	--
<b>Utilities.....</b>	22	3	--	--	--	--	--	--
Utilities.....	221	3	--	--	--	--	--	--
Electric Power Generation, Transmission and Distribution.....	2211	3	--	--	--	--	--	--
<b>Information.....</b>		3	--	--	--	--	--	--
<b>Information.....</b>	51	3	--	--	--	--	--	--
<b>Financial Activities.....</b>		11	5	4	--	--	--	--
<b>Finance and Insurance.....</b>	52	4	--	--	--	--	--	--
<b>Real Estate and Rental and Leasing.....</b>	53	7	--	3	--	--	--	--
Real Estate.....	531	4	--	3	--	--	--	--
Lessors of Real Estate.....	5311	4	--	3	--	--	--	--
Rental and Leasing Services.....	532	3	--	--	--	--	--	--
<b>Professional and Business Services.....</b>		46	19	7	4	8	8	--
<b>Professional, Scientific, and Technical Services.....</b>	54	7	5	--	--	--	--	--
Professional, Scientific, and Technical Services.....	541	7	5	--	--	--	--	--
Architectural, Engineering, and Related Services.....	5413	5	4	--	--	--	--	--
Testing Laboratories.....	54138	3	3	--	--	--	--	--
<b>Administrative and Support and Waste Management and Remediation Services.....</b>	56	39	14	6	4	7	8	--
Administrative and Support Services.....	561	33	11	6	3	7	6	--
Investigation and Security Services.....	5616	14	8	6	--	--	--	--
Investigation, Guard, and Armored Car Services.....	56161	13	7	6	--	--	--	--
Security Guards and Patrol Services.....	561612	8	--	6	--	--	--	--
Armored Car Services.....	561613	5	5	--	--	--	--	--
Services to Buildings and Dwellings.....	5617	19	3	--	3	7	6	--
Landscaping Services.....	56173	16	3	--	3	6	4	--
Waste Management and Remediation Services.....	562	6	3	--	--	--	--	--
Waste Collection.....	5621	3	--	--	--	--	--	--
Waste Collection.....	56211	3	--	--	--	--	--	--

See footnotes at end of table.

**TABLE 3. Fatal occupational injuries by industry and event or exposure, Texas, 2007 - continued**

Industry <sup>1</sup>	NAICS code <sup>1</sup>	Total fatalities (number)	Event or exposure <sup>2</sup>					
			Transportation incidents <sup>3</sup>	Assaults & violent acts <sup>4</sup>	Contact with objects & equipment	Falls	Exposure to harmful substances or environments	Fires & explosions
<b>Education and Health Services</b> .....		11	8	--	--	--	--	--
<b>Educational Services</b> .....	61	3	3	--	--	--	--	--
Educational Services.....	611	3	3	--	--	--	--	--
<b>Health Care and Social Assistance</b> .....	62	8	5	--	--	--	--	--
<b>Leisure and Hospitality</b> .....		29	6	19	--	--	--	--
<b>Arts, Entertainment, and Recreation</b> .....	71	13	6	5	--	--	--	--
Performing Arts, Spectator Sports, and Related Industries.....	711	7	--	3	--	--	--	--
Amusement, Gambling, and Recreation Industries.....	713	4	--	--	--	--	--	--
<b>Accommodation and Food Services</b> .....	72	16	--	14	--	--	--	--
Food Services and Drinking Places.....	722	14	--	13	--	--	--	--
Limited-Service Eating Places.....	7222	4	--	4	--	--	--	--
Limited-Service Eating Places.....	72221	4	--	4	--	--	--	--
Limited-Service Restaurants.....	722211	4	--	4	--	--	--	--
Drinking Places (Alcoholic Beverages).....	7224	8	--	8	--	--	--	--
Drinking Places (Alcoholic Beverages).....	72241	8	--	8	--	--	--	--
<b>Other Services</b> .....		16	--	3	8	--	--	3
<b>Other Services, except Public Administration</b> .....	81	16	--	3	8	--	--	3
Repair and Maintenance.....	811	14	--	--	7	--	--	3
Automotive Repair and Maintenance.....	8111	10	--	--	4	--	--	--
Automotive Mechanical and Electrical Repair and Maintenance.....	81111	6	--	--	3	--	--	--
General Automotive Repair.....	811111	4	--	--	3	--	--	--
Other Automotive Repair and Maintenance.....	81119	4	--	--	--	--	--	--
All Other Automotive Repair and Maintenance.....	811198	3	--	--	--	--	--	--
Commercial and Industrial Machinery and Equipment (except Automotive and Electronic) Repair and Maintenance.....	8113	4	--	--	3	--	--	--
Commercial and Industrial Machinery and Equipment (except Automotive and Electronic) Repair and Maintenance.....	81131	4	--	--	3	--	--	--
<b>Government</b> <sup>6</sup> .....		49	23	16	4	--	4	--
<b>Federal Government</b> .....		7	5	--	--	--	--	--
Service providing.....		7	5	--	--	--	--	--
Public Administration.....		6	4	--	--	--	--	--
Public Administration.....	92	6	4	--	--	--	--	--
State Government.....		10	5	4	--	--	--	--
Service providing.....		10	5	4	--	--	--	--
Public Administration.....		8	5	--	--	--	--	--
Public Administration.....	92	8	5	--	--	--	--	--
Justice, Public Order, and Safety Activities.....	922	6	4	--	--	--	--	--
Justice, Public Order, and Safety Activities.....	9221	6	4	--	--	--	--	--
Correctional Institutions.....	92214	5	3	--	--	--	--	--
<b>Local Government</b> .....		32	13	11	4	--	--	--
Service providing.....		30	12	11	3	--	--	--
Leisure and Hospitality.....		4	--	--	--	--	--	--
<b>Arts, Entertainment, and Recreation</b> .....	71	4	--	--	--	--	--	--
Museums, Historical Sites, and Similar Institutions.....	712	4	--	--	--	--	--	--
Museums, Historical Sites, and Similar Institutions.....	7121	4	--	--	--	--	--	--
Nature Parks and Other Similar Institutions.....	71219	4	--	--	--	--	--	--
<b>Public Administration</b> .....		23	10	10	--	--	--	--
Public Administration.....	92	23	10	10	--	--	--	--
Justice, Public Order, and Safety Activities.....	922	22	9	10	--	--	--	--
Justice, Public Order, and Safety Activities.....	9221	22	9	10	--	--	--	--
Police Protection.....	92212	20	9	10	--	--	--	--

<sup>1</sup> Classified according to the North American Industry Classification System, 2002.

<sup>2</sup> Based on the 1992 BLS Occupational Injury and Illness Classification Manual.

<sup>3</sup> Includes highway, nonhighway, air, water, rail fatalities, and fatalities resulting from being struck by a vehicle.

<sup>4</sup> Includes violence by persons, self-inflicted injury, and attacks by animals.

<sup>5</sup> Includes fatalities at all establishments categorized as Mining (Sector 21) in the North American Industry Classification System, 2002, including establishments not governed by the Mine Safety and Health Administration (MSHA) rules and reporting, such as those in Oil and Gas Extraction.

<sup>6</sup> Includes fatalities to workers employed by governmental organizations regardless of industry.

NOTE: Totals for major categories may include subcategories not shown separately. Dashes indicate no data reported or data that do not meet publication criteria. Data for 2007 are preliminary.

SOURCE: U.S. Department of Labor, Bureau of Labor Statistics, in cooperation with State and Federal agencies, Census of Fatal Occupational Injuries.

**TABLE 4. Fatal occupational injuries by occupation and event or exposure, Texas, 2007**

Occupation <sup>1</sup>	Total fatalities (number)	Event or exposure <sup>2</sup>					
		Transportation incidents <sup>3</sup>	Assaults and violent acts <sup>4</sup>	Contact with objects and equipment	Falls	Exposure to harmful substances or environments	Fires and explosions
Total.....	527	192	86	85	78	66	17
Management occupations.....	20	3	10	3	--	--	--
Operations specialties managers.....	3	--	3	--	--	--	--
Other management occupations.....	17	3	7	3	--	--	--
Agricultural managers.....	5	--	--	3	--	--	--
Farmers and ranchers.....	5	--	--	3	--	--	--
Construction managers.....	4	3	--	--	--	--	--
Construction managers.....	4	3	--	--	--	--	--
Miscellaneous managers.....	4	--	--	--	--	--	--
Managers, all other.....	4	--	--	--	--	--	--
Business and financial operations occupations.....	3	--	--	--	--	--	--
Architecture and engineering occupations.....	5	--	--	--	--	--	--
Engineers.....	4	--	--	--	--	--	--
Life, physical, and social science occupations.....	3	--	--	--	--	--	--
Life, physical, and social science technicians.....	3	--	--	--	--	--	--
Arts, design, entertainment, sports, and media occupations.....	6	--	--	--	--	--	--
Entertainers and performers, sports and related workers.....	5	--	--	--	--	--	--
Healthcare practitioners and technical occupations.....	5	3	--	--	--	--	--
Health diagnosing and treating practitioners.....	3	--	--	--	--	--	--
Protective service occupations.....	54	26	21	--	--	--	--
Law enforcement workers.....	26	13	12	--	--	--	--
Bailiffs, correctional officers, and jailers.....	3	--	--	--	--	--	--
Correctional officers and jailers.....	3	--	--	--	--	--	--
Police officers.....	21	10	10	--	--	--	--
Police and sheriff's patrol officers.....	21	10	10	--	--	--	--
Other protective service workers.....	24	12	9	--	--	--	--
Security guards and gaming surveillance officers.....	20	10	8	--	--	--	--
Security guards.....	20	10	8	--	--	--	--
Miscellaneous protective service workers.....	3	--	--	--	--	--	--
Food preparation and serving related occupations.....	8	--	8	--	--	--	--
Supervisors, food preparation and serving workers.....	4	--	4	--	--	--	--
First-line supervisors/managers, food preparation and serving workers.....	4	--	4	--	--	--	--
First-line supervisors/managers of food preparation and serving workers.....	4	--	4	--	--	--	--
Food and beverage serving workers.....	3	--	3	--	--	--	--
Building and grounds cleaning and maintenance occupations.....	28	6	--	5	7	8	--
Supervisors, building and grounds cleaning and maintenance workers.....	3	--	--	--	--	--	--
First-line supervisors/managers, building and grounds cleaning and maintenance workers.....	3	--	--	--	--	--	--
First-line supervisors/managers of landscaping, lawn service, and groundskeeping workers.....	3	--	--	--	--	--	--
Building cleaning and pest control workers.....	4	--	--	--	--	3	--
Building cleaning workers.....	3	--	--	--	--	3	--
Janitors and cleaners, except maids and housekeeping cleaners.....	3	--	--	--	--	3	--
Grounds maintenance workers.....	21	5	--	3	6	5	--
Grounds maintenance workers.....	21	5	--	3	6	5	--
Landscaping and groundskeeping workers.....	11	5	--	--	--	--	--
Tree trimmers and pruners.....	10	--	--	--	5	3	--
Personal care and service occupations.....	6	4	--	--	--	--	--
Other personal care and service workers.....	4	--	--	--	--	--	--
Sales and related occupations.....	30	8	20	--	--	--	--
Supervisors, sales workers.....	13	--	11	--	--	--	--
First-line supervisors/managers, sales workers.....	13	--	11	--	--	--	--
First-line supervisors/managers of retail sales workers.....	11	--	10	--	--	--	--
Retail sales workers.....	11	--	9	--	--	--	--
Cashiers.....	6	--	6	--	--	--	--
Cashiers.....	6	--	6	--	--	--	--
Retail salespersons.....	3	--	--	--	--	--	--
Retail salespersons.....	3	--	--	--	--	--	--
Sales representatives, wholesale and manufacturing.....	5	4	--	--	--	--	--
Sales representatives, wholesale and manufacturing, except technical and scientific products.....	5	4	--	--	--	--	--
Sales representatives, wholesale and manufacturing, except technical and scientific products.....	4	3	--	--	--	--	--
Office and administrative support occupations.....	9	5	--	--	--	--	--
Material recording, scheduling, dispatching, and distributing workers.....	6	3	--	--	--	--	--
Farming, fishing, and forestry occupations.....	14	5	3	3	--	--	--
Agricultural workers.....	9	4	3	--	--	--	--
Miscellaneous agricultural workers.....	9	4	3	--	--	--	--
Farmworkers, farm and ranch animals.....	6	--	3	--	--	--	--
Fishing and hunting workers.....	3	--	--	--	--	--	--
Fishers and related fishing workers.....	3	--	--	--	--	--	--
Fishers and related fishing workers.....	3	--	--	--	--	--	--
Construction and extraction occupations.....	153	35	3	35	45	28	5
Supervisors, construction and extraction workers.....	10	5	--	--	--	--	--
First-line supervisors/managers of construction trades and extraction workers.....	10	5	--	--	--	--	--
First-line supervisors/managers of construction trades and extraction workers.....	10	5	--	--	--	--	--
Construction trades workers.....	103	21	--	20	40	19	--
Carpenters.....	12	--	--	--	8	--	--

See footnotes at end of table.

**TABLE 4. Fatal occupational injuries by occupation and event or exposure, Texas, 2007 - Continued**

Occupation <sup>1</sup>	Total fatalities (number)	Event or exposure <sup>2</sup>					
		Transportation incidents <sup>3</sup>	Assaults and violent acts <sup>4</sup>	Contact with objects and equipment	Falls	Exposure to harmful substances or environments	Fires and explosions
Carpenters.....	12	--	--	--	8	--	--
Construction laborers.....	41	10	--	9	17	5	--
Construction laborers.....	41	10	--	9	17	5	--
Construction equipment operators.....	9	5	--	3	--	--	--
Paving, surfacing, and tamping equipment operators.....	3	3	--	--	--	--	--
Operating engineers and other construction equipment operators.....	6	--	--	3	--	--	--
Electricians.....	11	--	--	--	--	8	--
Electricians.....	11	--	--	--	--	8	--
Painters and paperhangers.....	3	--	--	--	3	--	--
Painters, construction and maintenance.....	3	--	--	--	3	--	--
Pipelayers, plumbers, pipefitters, and steamfitters.....	8	--	--	4	--	--	--
Pipelayers.....	3	--	--	3	--	--	--
Plumbers, pipefitters, and steamfitters.....	5	--	--	--	--	--	--
Roofers.....	8	--	--	--	5	--	--
Roofers.....	8	--	--	--	5	--	--
Helpers, construction trades.....	3	--	--	--	--	--	--
Helpers, construction trades.....	3	--	--	--	--	--	--
Helpers--electricians.....	3	--	--	--	--	--	--
Extraction workers.....	35	8	--	15	3	6	--
Derrick, rotary drill, and service unit operators, oil, gas, and mining.....	8	--	--	5	--	--	--
Derrick operators, oil and gas.....	4	--	--	--	--	--	--
Rotary drill operators, oil and gas.....	3	--	--	--	--	--	--
Helpers--extraction workers.....	3	--	--	3	--	--	--
Helpers--extraction workers.....	3	--	--	3	--	--	--
Miscellaneous extraction workers.....	21	6	--	5	3	4	--
Extraction workers, all other.....	21	6	--	5	3	4	--
Installation, maintenance, and repair occupations.....	38	9	--	10	7	9	--
Vehicle and mobile equipment mechanics, installers, and repairers.....	13	--	--	7	--	--	--
Automotive technicians and repairers.....	3	--	--	3	--	--	--
Automotive service technicians and mechanics.....	3	--	--	3	--	--	--
Bus and truck mechanics and diesel engine specialists.....	3	--	--	--	--	--	--
Bus and truck mechanics and diesel engine specialists.....	3	--	--	--	--	--	--
Heavy vehicle and mobile equipment service technicians and mechanics.....	4	--	--	--	--	--	--
Miscellaneous vehicle and mobile equipment mechanics, installers, and repairers.....	3	--	--	--	--	--	--
Tire repairers and changers.....	3	--	--	--	--	--	--
Other installation, maintenance, and repair occupations.....	24	6	--	3	5	9	--
Heating, air conditioning, and refrigeration mechanics and installers.....	5	--	--	--	--	--	--
Heating, air conditioning, and refrigeration mechanics and installers.....	5	--	--	--	--	--	--
Industrial machinery installation, repair, and maintenance workers.....	13	3	--	3	--	4	--
Industrial machinery mechanics.....	9	3	--	3	--	--	--
Maintenance and repair workers, general.....	4	--	--	--	--	--	--
Line installers and repairers.....	5	--	--	--	--	3	--
Electrical power-line installers and repairers.....	4	--	--	--	--	3	--
Production occupations.....	31	6	--	12	4	3	6
Supervisors, production workers.....	4	--	--	--	--	--	--
First-line supervisors/managers of production and operating workers.....	4	--	--	--	--	--	--
First-line supervisors/managers of production and operating workers.....	4	--	--	--	--	--	--
Metal workers and plastic workers.....	4	--	--	3	--	--	3
Welding, soldering, and brazing workers.....	5	--	--	--	--	--	--
Welders, cutters, solderers, and brazers.....	5	--	--	--	--	--	--
Other production occupations.....	15	5	--	7	--	--	--
Inspectors, testers, sorters, samplers, and weighers.....	5	4	--	--	--	--	--
Inspectors, testers, sorters, samplers, and weighers.....	5	4	--	--	--	--	--
Miscellaneous production workers.....	5	--	--	--	--	--	--
Production workers, all other.....	4	--	--	--	--	--	--
Transportation and material moving occupations.....	108	70	9	13	4	11	--
Air transportation workers.....	4	3	--	--	--	--	--
Aircraft pilots and flight engineers.....	4	3	--	--	--	--	--
Commercial pilots.....	3	--	--	--	--	--	--
Motor vehicle operators.....	79	56	8	7	--	5	--
Driver/sales workers and truck drivers.....	73	54	4	7	--	5	--
Driver/sales workers.....	4	--	--	--	--	--	--
Truck drivers, heavy and tractor-trailer.....	68	51	--	7	--	5	--
Taxi drivers and chauffeurs.....	4	--	4	--	--	--	--
Taxi drivers and chauffeurs.....	4	--	4	--	--	--	--
Water transportation workers.....	4	--	--	--	--	3	--
Ship and boat captains and operators.....	3	--	--	--	--	--	--
Captains, mates, and pilots of water vessels.....	3	--	--	--	--	--	--
Material moving workers.....	20	10	--	6	--	3	--
Industrial truck and tractor operators.....	4	--	--	--	--	--	--
Industrial truck and tractor operators.....	4	--	--	--	--	--	--
Laborers and material movers, hand.....	12	8	--	3	--	--	--
Laborers and freight, stock, and material movers, hand.....	11	7	--	3	--	--	--

<sup>1</sup> Based on the 2000 Standard Occupational Classification System.

<sup>2</sup> Based on the 1992 BLS Occupational Injury and Illness Classification Manual.

<sup>3</sup> Includes highway, nonhighway, air, water, rail fatalities, and fatalities resulting from being struck by a vehicle.

<sup>4</sup> Includes violence by persons, self-inflicted injury, and attacks by animals.

NOTE: Totals for major categories may include subcategories not shown separately. Dashes indicate no data reported or data that do not meet publication criteria. Data for 2007 are preliminary.

SOURCE: U.S. Department of Labor, Bureau of Labor Statistics, in cooperation with State and Federal agencies, Census of Fatal Occupational Injuries