



X-Plain *Pap Smear*

Reference Summary

Introduction

Cancer of the cervix affects more than 10,000 women in the United States every year.

Thanks to a procedure called a Pap smear test, many early stages of cervical cancer can be detected and treated.

Your doctor has recommended that you have a Pap smear.

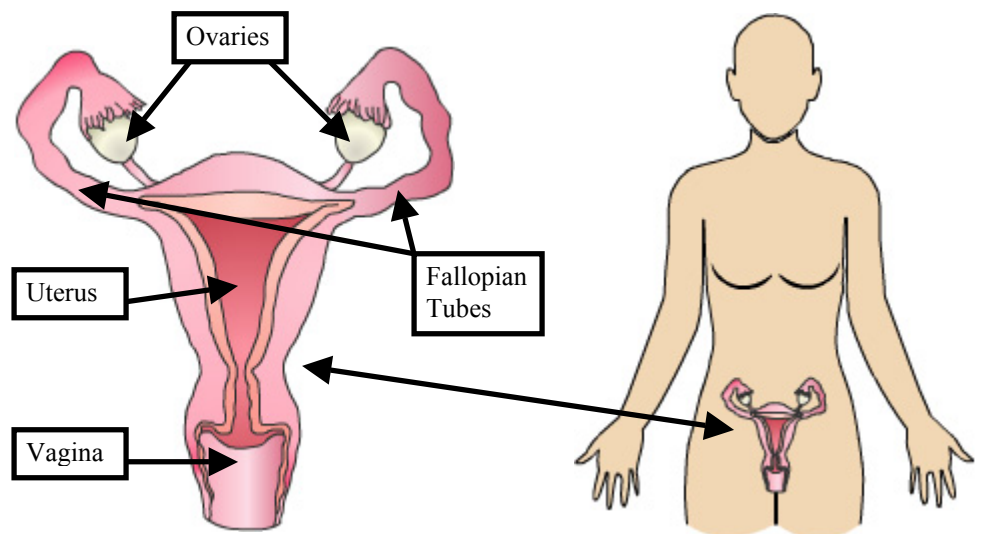
This reference summary will help you better understand what a Pap smear is and why it is beneficial.

Anatomy

The female reproductive organs include:

- The vagina
- The uterus
- The fallopian tubes
- The ovaries.

These organs are located in the pelvis, between the urinary bladder and the rectum.



The ovaries have 2 main functions.

- The production of specialized hormones, such as estrogen and progesterone.
- Ovulation, which is the release of eggs needed for reproduction.

Estrogen and progesterone prepare the inner lining of the uterus in case a pregnancy takes place. These hormones also regulate when the eggs get released.

This document is a summary of what appears on screen in *X-Plain*[™]. It is for informational purposes and is not intended to be a substitute for the advice of a doctor or healthcare professional or a recommendation for any particular treatment plan. Like any printed material, it may become out of date over time. It is important that you rely on the advice of a doctor or a healthcare professional for your specific condition.

When an egg is released, it goes down the fallopian tube, where it may or may not get fertilized by a sperm.

If it is not fertilized, the egg and the inner lining of the uterus are discharged to the outside of the body during the menstrual period.

The uterus is pear shaped and measures approximately 3 inches in length.

The lowest part of the uterus is called the cervix; it opens into the vagina. The vagina opens to the outside of the body between the urethra, which is the urinary bladder opening, and the rectum.

Diseases Of The Cervix

Some sexually transmitted diseases are associated with the development of cancer of the cervix, also called cervical cancer. Since the cervix comes in contact with semen during unprotected heterosexual sex, it could get infected with sexually transmitted diseases.

Cervical cancer usually develops gradually. At first, the cells that line the cervix become slightly abnormal; this is known as “atypia”. After a while, atypia could turn into cancer.

In the early stages of cervical cancer, the cancer is limited to just the surface area of the cervix. This is called “carcinoma in-situ.”

If left untreated, the cancer will move deeper into the cervix. From there, it could move to other organs.

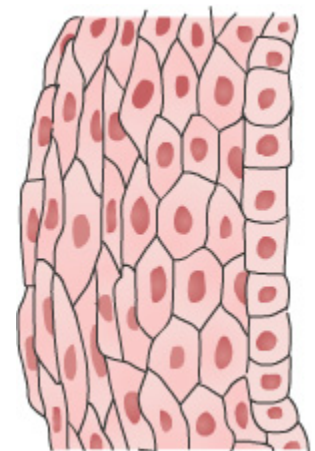
Treating atypia and carcinoma in situ is very successful in curing cervical cancer.

The Pap smear test is essential in detecting atypia early. It is named after the doctor who made it popular, Dr. Papanicolaou.

The aim of a Pap smear test is to obtain a specimen from the cervix using a swab, or smear. The specimen is sent to a lab to be analyzed.

During A Pap Smear

First you will be asked to undress, at least from the waist down. You will be given either a gown or a sheet to drape over your lap.

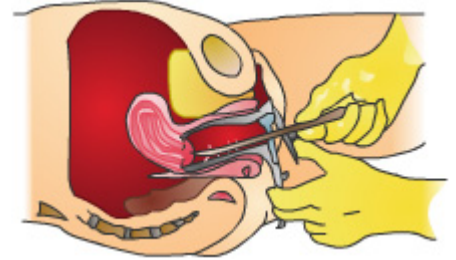


Surface of cervix

This document is a summary of what appears on screen in *X-Plain™*. It is for informational purposes and is not intended to be a substitute for the advice of a doctor or healthcare professional or a recommendation for any particular treatment plan. Like any printed material, it may become out of date over time. It is important that you rely on the advice of a doctor or a healthcare professional for your specific condition.

You will then be asked to lie on an examination table and put your feet in the stirrups.

The doctor or nurse will then gently open your vagina and insert a speculum. A speculum is a specialized instrument that keeps the vagina open so that a health care provider can see and reach inside the vagina more easily.



Next, a small spatula is inserted into the vagina and used to swab the cervix.

The sample, which contains cells and mucus, is then smeared onto a glass slide and sent to a lab for a pathologist to look at.

After the test is finished, the speculum is taken out and you will be able to put your clothes back on.

Results

In the lab, a specialized doctor, known as a pathologist, looks at the Pap smear slides under a microscope. By doing this, he or she is able to find out if there is infection, atypia or cancer in the specimen.

Next, the test results are sent to your doctor. He or she will discuss the results with you.

It is very important to make a follow-up appointment if your test results are abnormal. Abnormal test results are known as positive Pap smear tests.



Results are considered abnormal if any of the following were noticed on the slide:

- Atypia
- Early cancer
- Advanced cancer
- Infections

A Pap smear test should usually be done once a year. In cases where abnormalities are found, the test might need to be repeated every few months.

This document is a summary of what appears on screen in *X-Plain™*. It is for informational purposes and is not intended to be a substitute for the advice of a doctor or healthcare professional or a recommendation for any particular treatment plan. Like any printed material, it may become out of date over time. It is important that you rely on the advice of a doctor or a healthcare professional for your specific condition.

Prevention

A Pap smear test is one of the best ways to detect cervical cancer in its early stages. The chances of successfully treating cervical cancer are higher if it is found early.

According to the American Cancer Society, women should start getting annual Pap smears either when they become sexually active or when they turn 18, whichever comes first.

If a woman's Pap smears show no sign of cervical cancer or infection for 3 years in a row, sometimes it is okay to get them less often than once a year. It is always best to follow your doctor's advice.

Since cervical cancer is very strongly associated with sexually transmitted diseases, practicing safe sex is very important. When used properly, condoms are extremely helpful in preventing sexually transmitted diseases.

Smoking has also been linked to cervical cancer. This is an excellent reason to refrain from or stop smoking!

When found early, most cases of cervical atypia or cancer can be cured. You owe it to yourself to have Pap smears on a regular basis!

Summary

A Pap smear is extremely important in detecting cervical cancer in its early stages.

Pap smears are safe, painless, and very reliable.

Getting regular Pap smears could save your life! Don't forget to schedule your yearly Pap smear. It is a small price to pay for your health.



This document is a summary of what appears on screen in *X-Plain™*. It is for informational purposes and is not intended to be a substitute for the advice of a doctor or healthcare professional or a recommendation for any particular treatment plan. Like any printed material, it may become out of date over time. It is important that you rely on the advice of a doctor or a healthcare professional for your specific condition.