

OE ENERGY MARKET SNAPSHOT

National Version – June 2009 Data

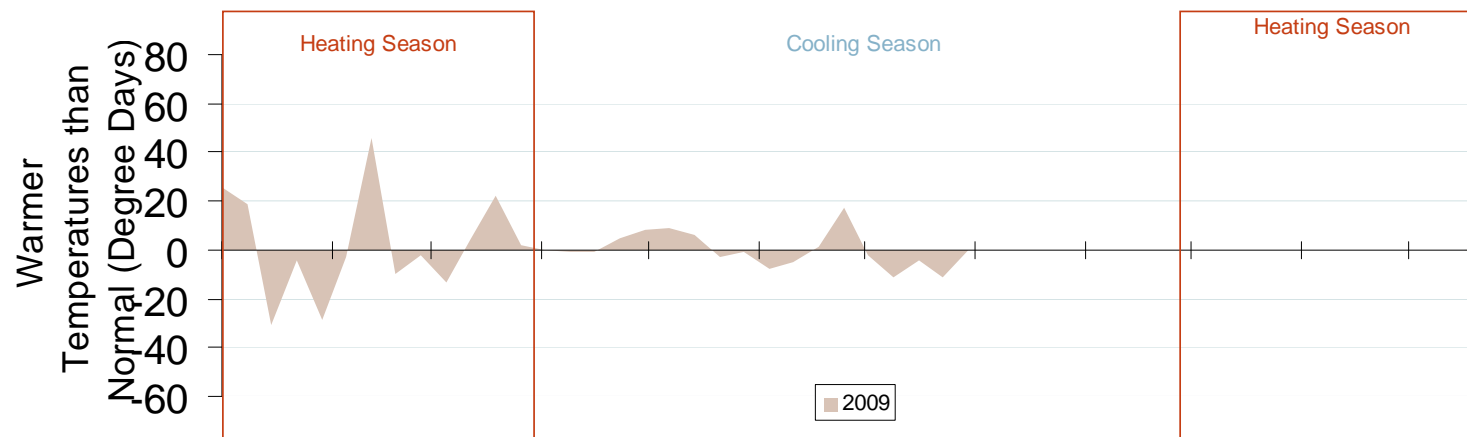
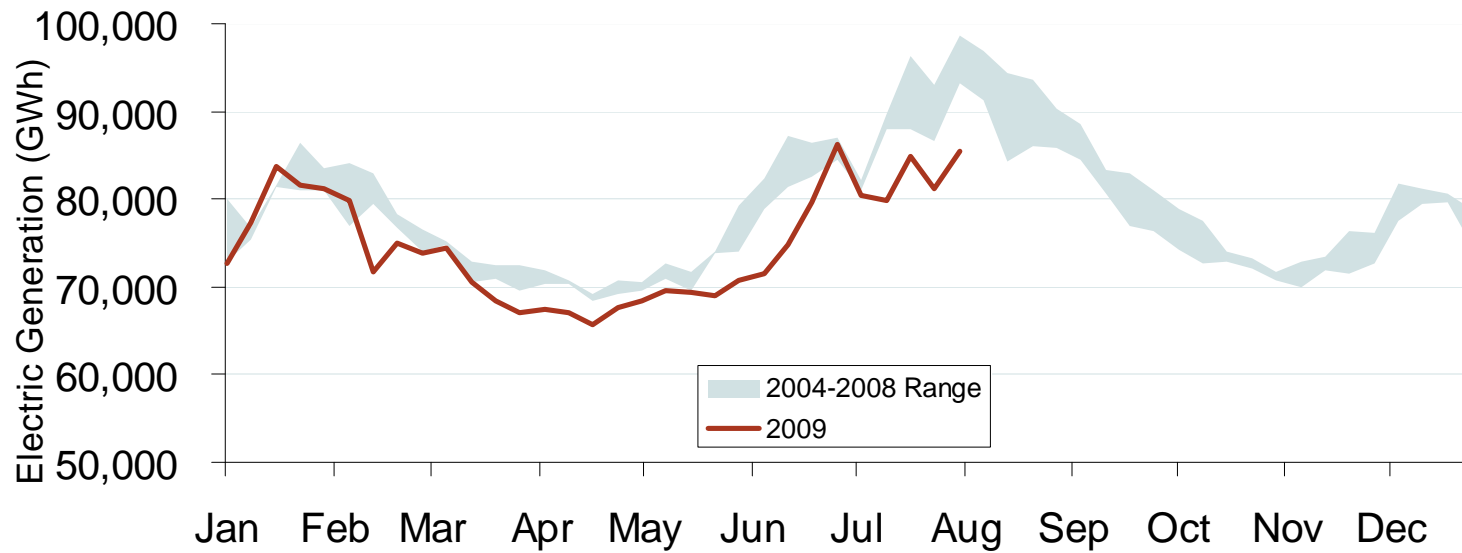
- **Electricity Markets**
- **Natural Gas and Fuel Markets**

Office of Enforcement
Federal Energy Regulatory Commission
July 2009

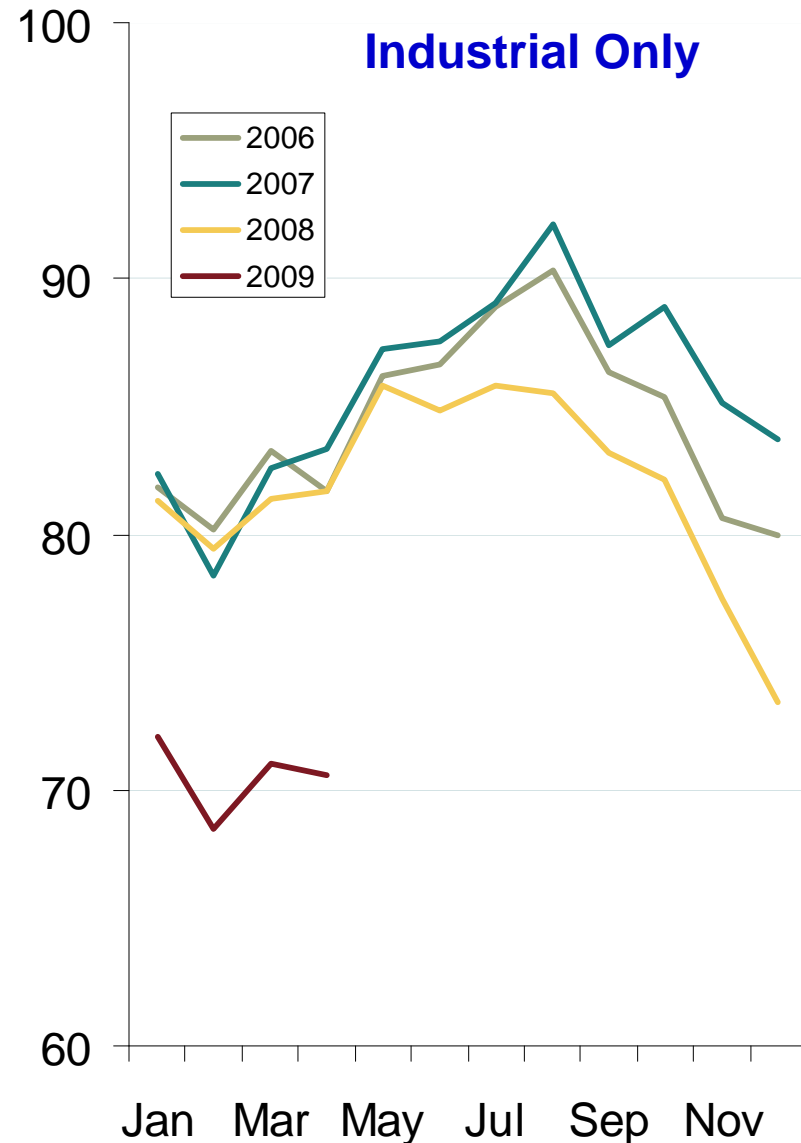
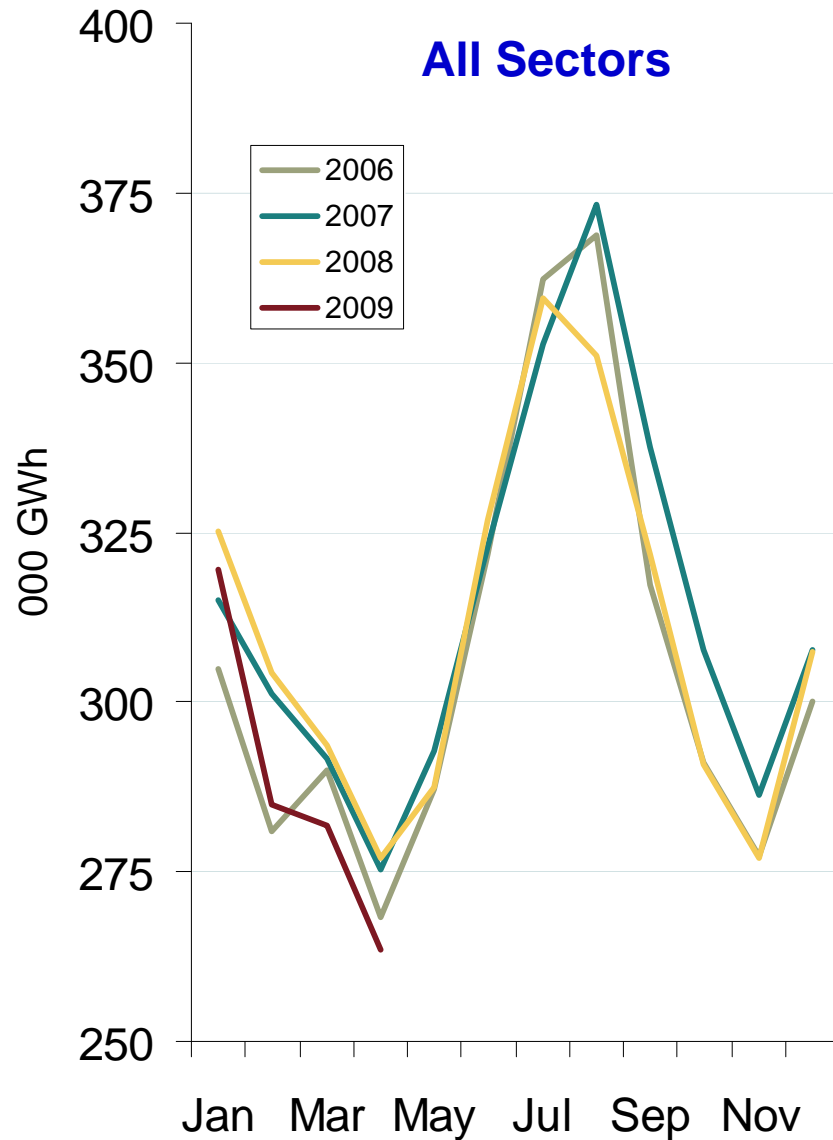


Electricity Markets

Weekly U.S. Electric Generation Output and Temperatures

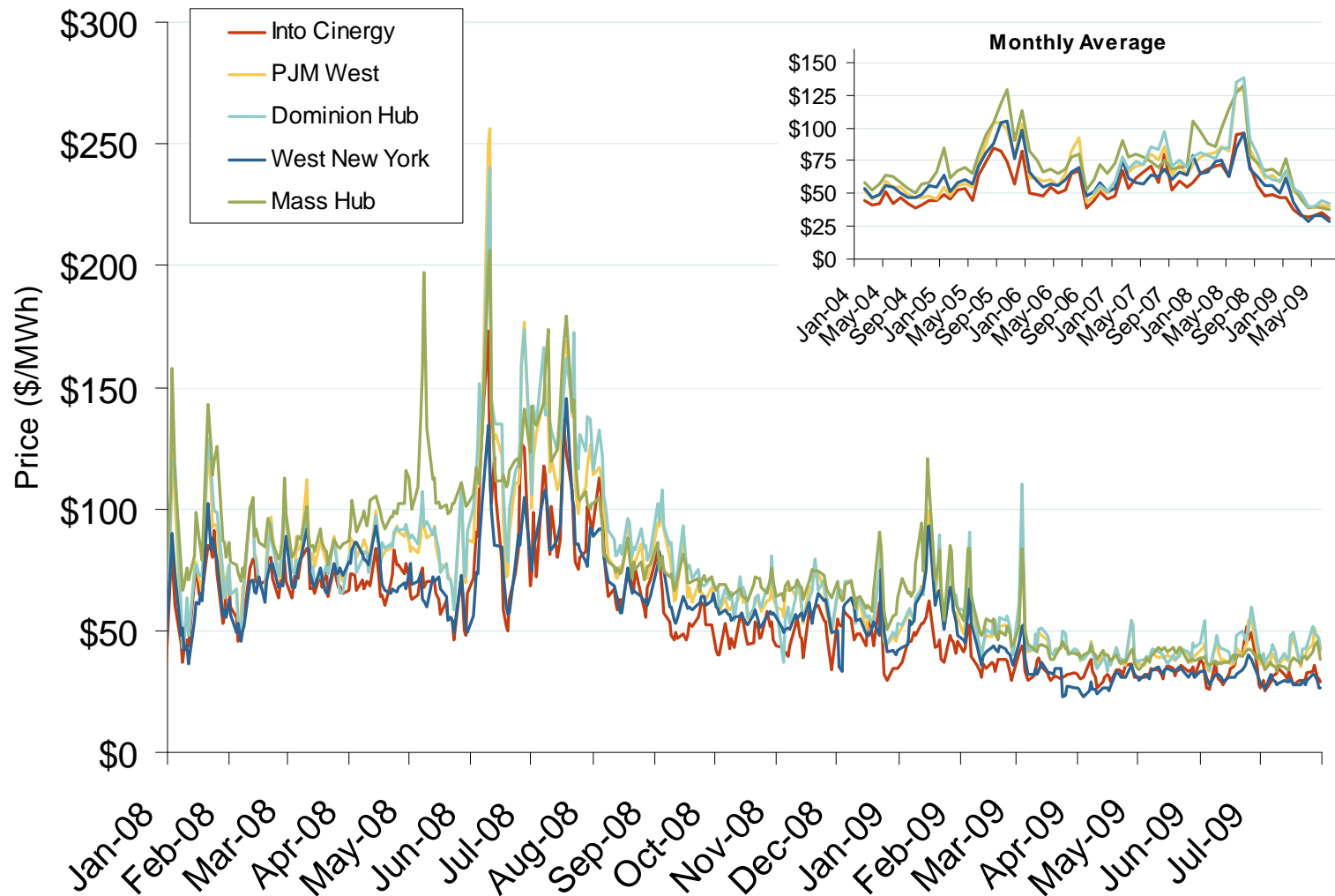


Monthly Retail Electricity Demand



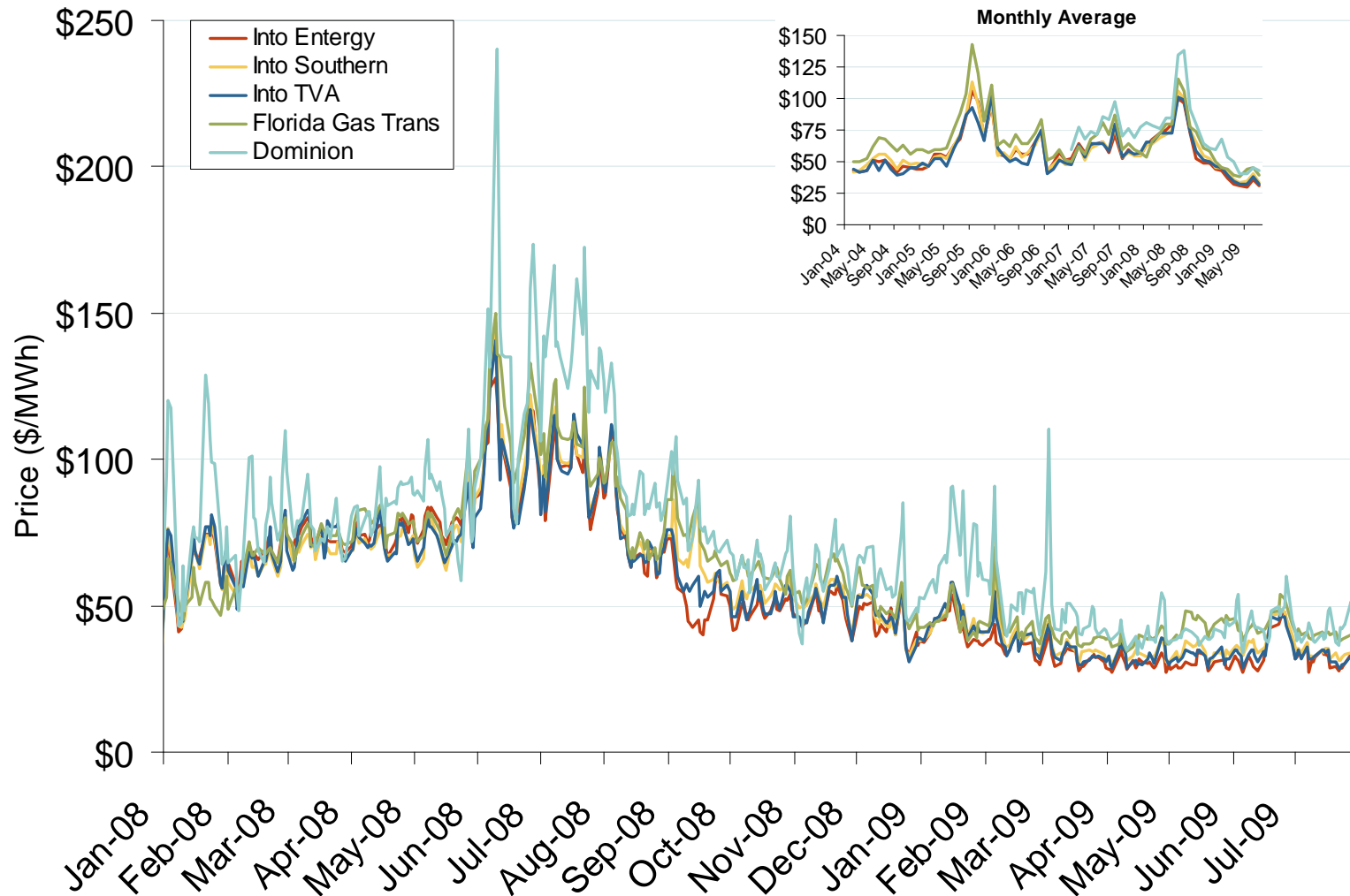
Source: Derived from EIA data.
August 2009 National Snapshot Report

Eastern Daily Bilateral Day-Ahead On-Peak Prices



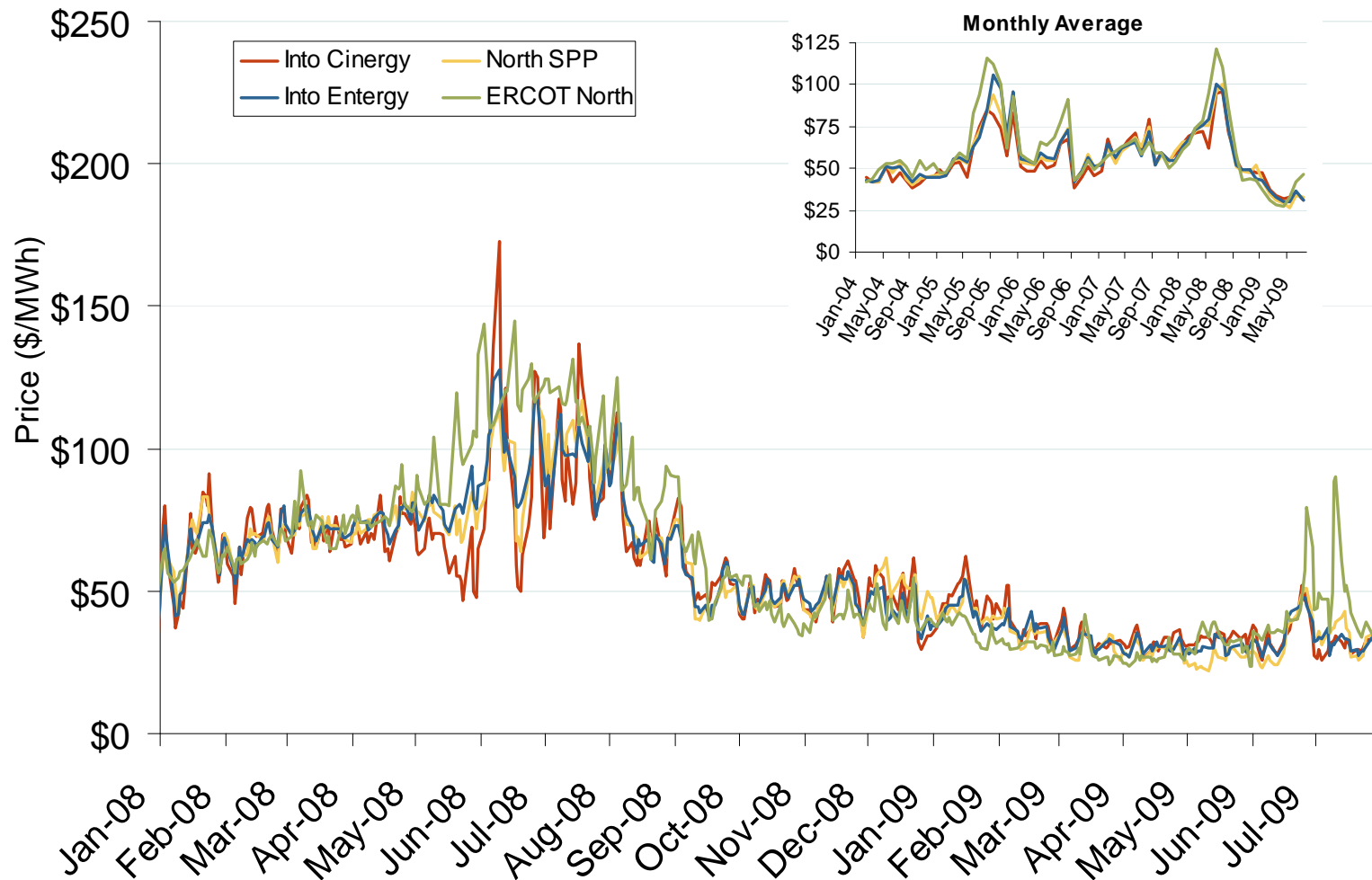
Source: Derived from *Platts* data.
August 2009 National Snapshot Report

Southeastern Daily Bilateral Day-Ahead On-Peak Prices



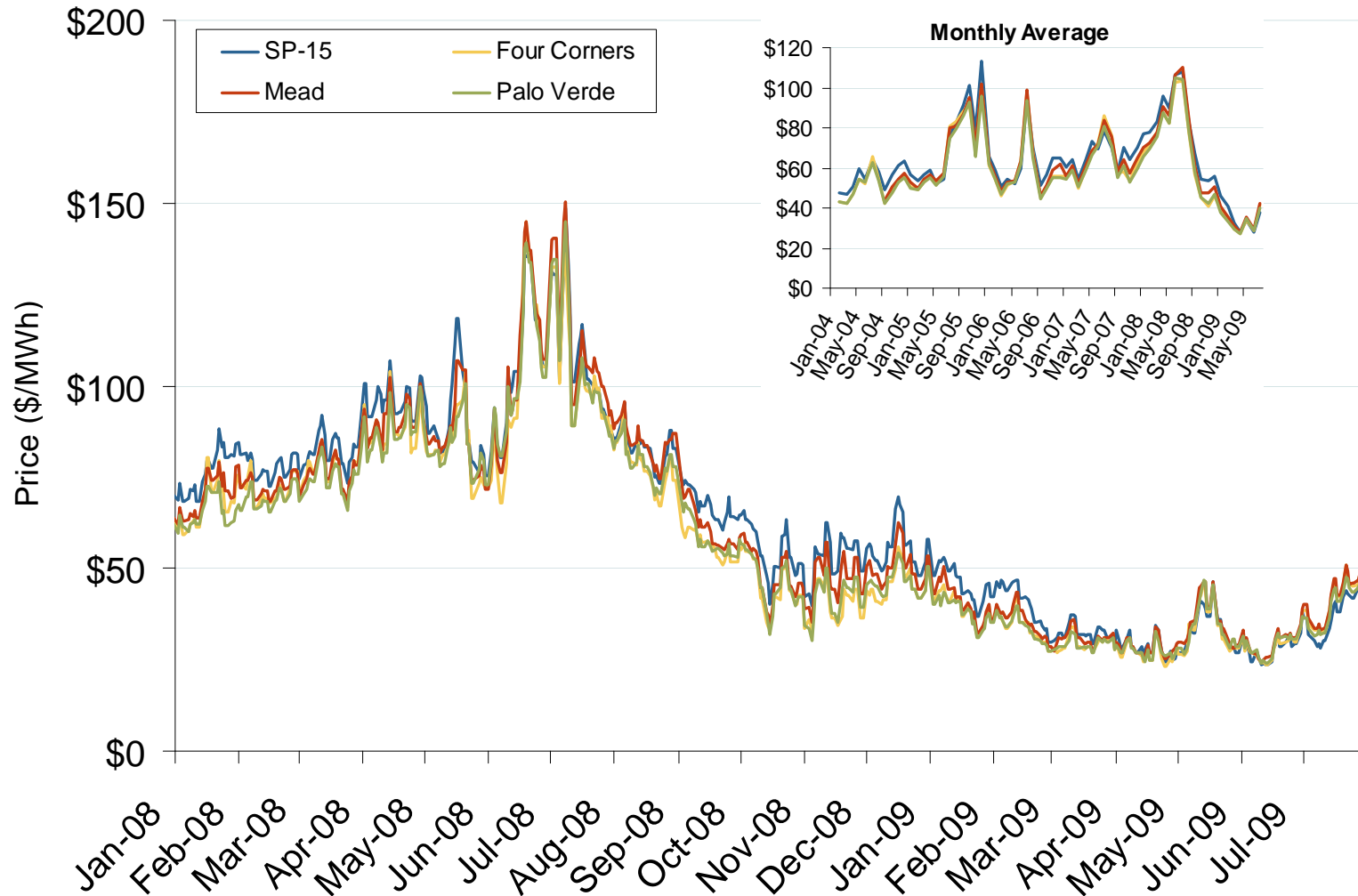
Source: Derived from *Platts* data.
August 2009 National Snapshot Report

Central Daily Bilateral Day-Ahead On-Peak Prices



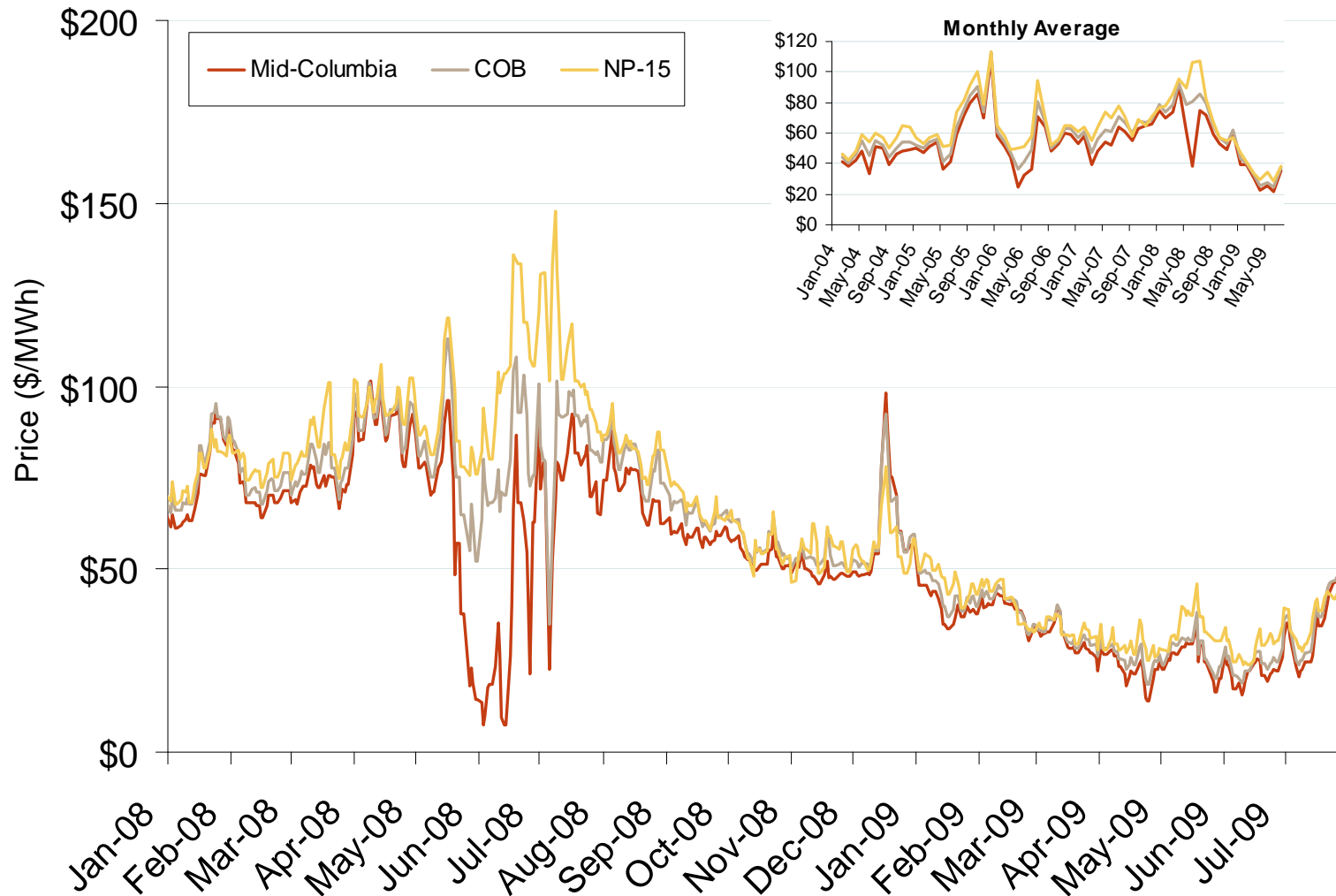
Source: Derived from *Platts* data.
August 2009 National Snapshot Report

Southwestern Daily Bilateral Day-Ahead On-Peak Prices



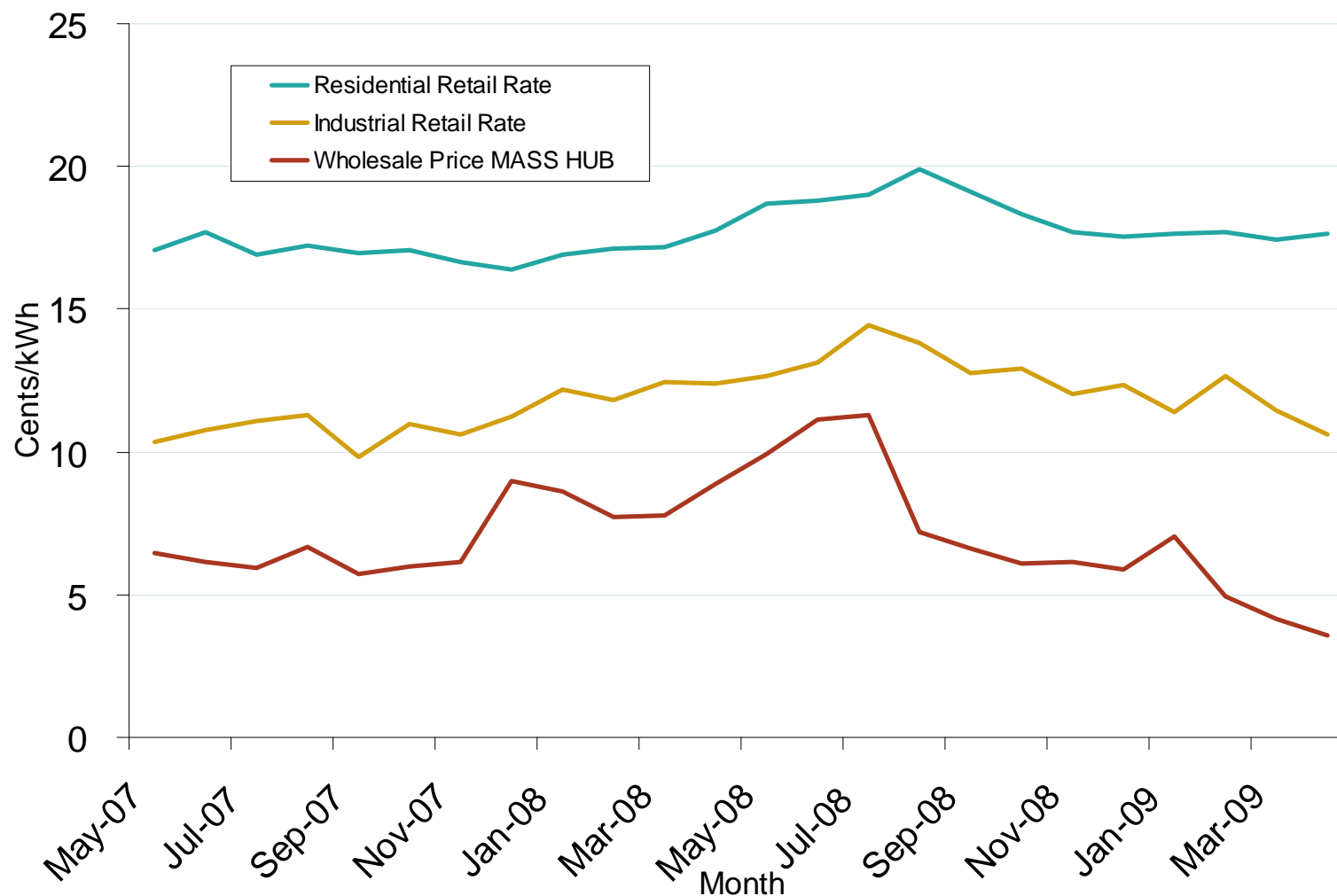
Source: Derived from *Platts* data.
August 2009 National Snapshot Report

Northwestern Daily Bilateral Day-Ahead On-Peak Prices



Source: Derived from Platts data.
August 2009 National Snapshot Report

Northeastern Average Retail Rates and Wholesale Prices



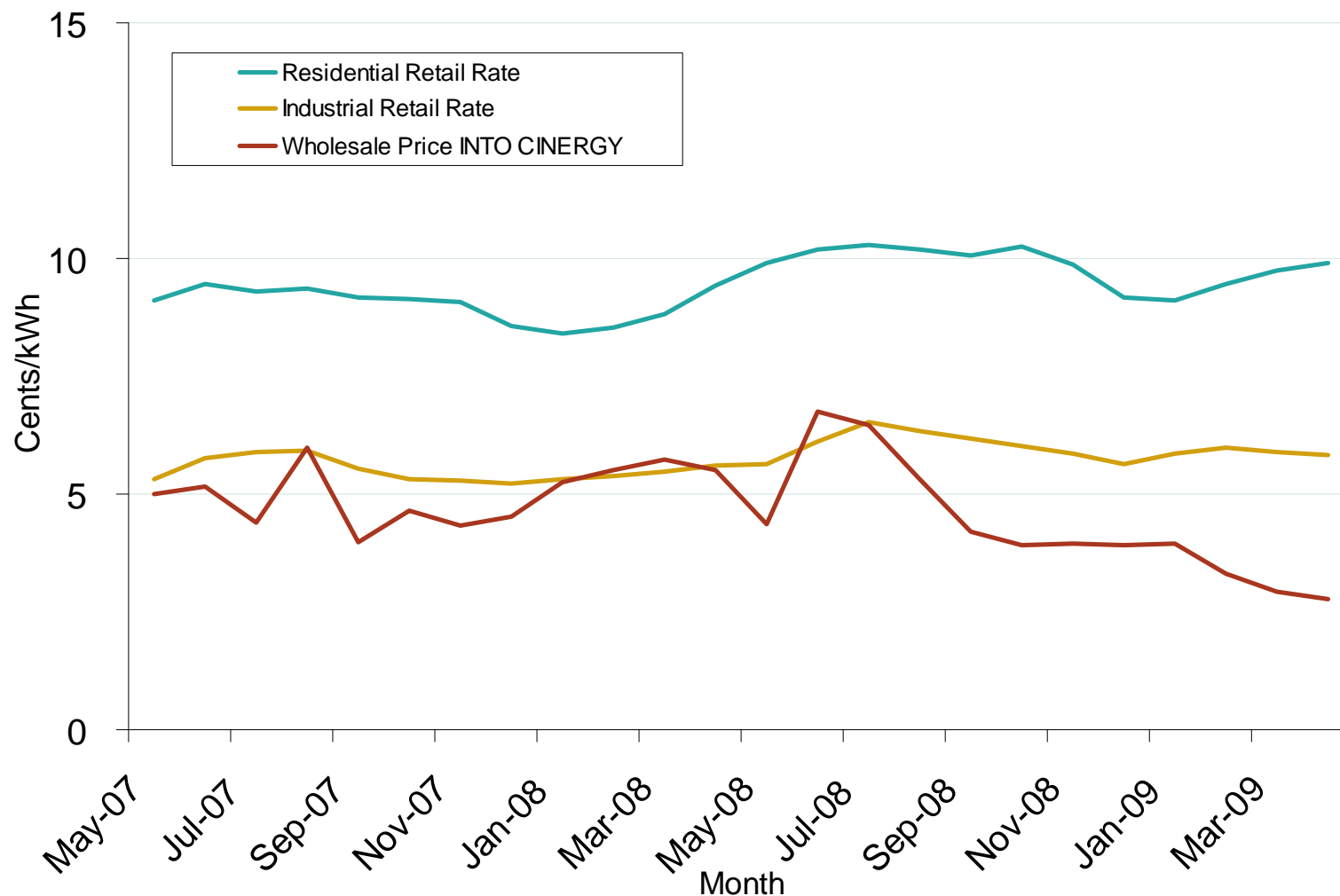
Notes: Retail rates represent average monthly rates for ME, NH, VT, MA, RI, CT and NY, weighted by sales in each state, as reported in Form EIA-826 database. Wholesale prices represent monthly day ahead indices for power at MASS HUB, weighted by peak and off-peak hours, as reported by *Platts*.

Southeastern Average Retail Rates and Wholesale Prices



Notes: Retail rates represent average monthly rates for AL, FL, GA, LA, MS, NC, SC, and TN, weighted by sales in each state, as reported in Form EIA-826 database. Wholesale prices represent monthly day ahead indices for power at INTO SOUTHERN, weighted by peak and off-peak hours, as reported by *Platts*.

Midwest Average Retail Rates and Wholesale Prices



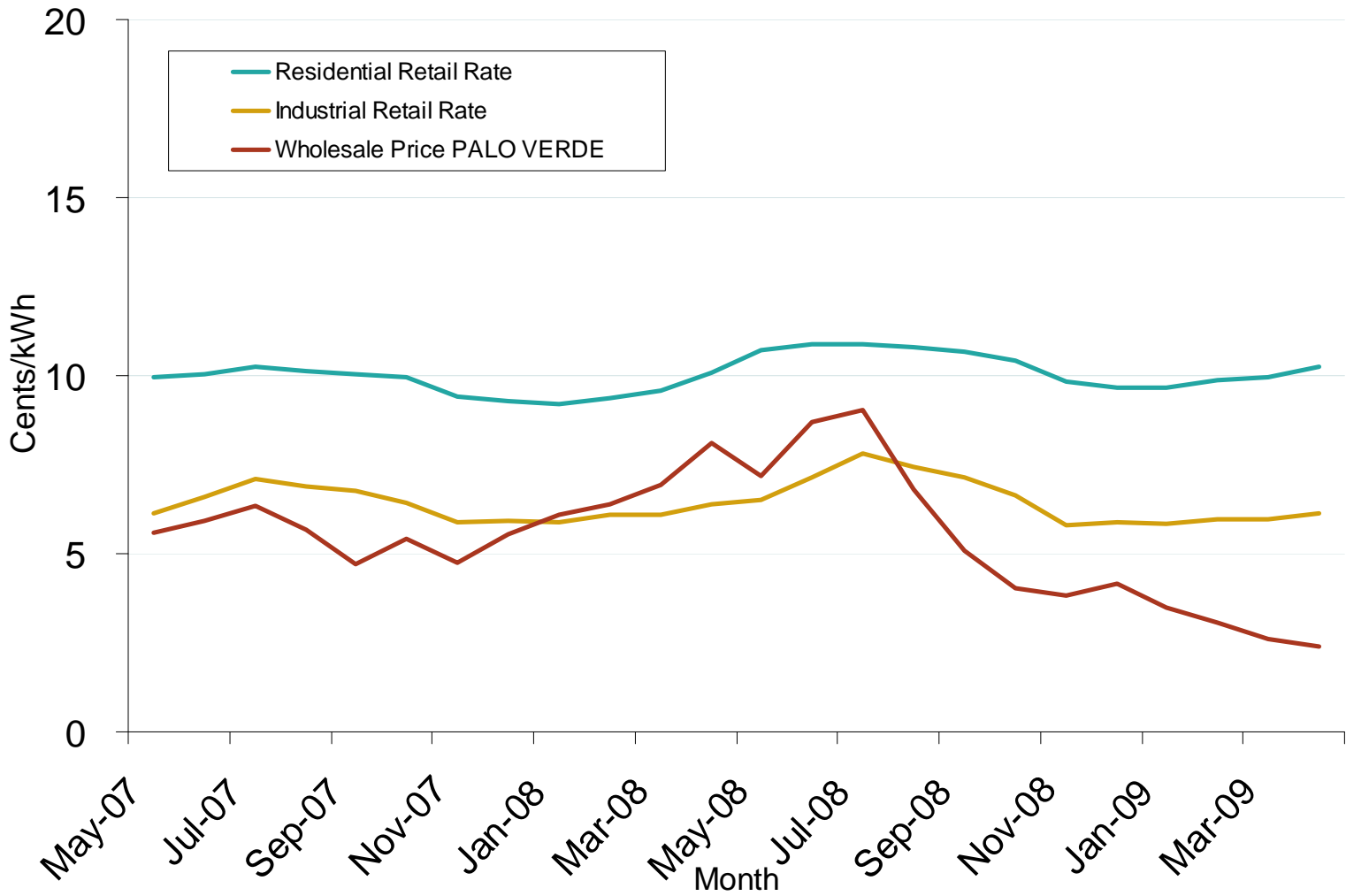
Notes: Retail rates represent average monthly rates for AR, IA, IL, IN, KS, KY, MI, MN, MO, MT, ND, NE, OK, SD, and WI, weighted by sales in each state, as reported in Form EIA-826 database. Wholesale prices represent monthly day ahead indices for power at INTO CINERGY, weighted by peak and off-peak hours, as reported by *Platts*.

Mid-Atlantic Average Retail Rates and Wholesale Prices



Notes: Retail rates represent average monthly rates for DC, DE, MD, NJ, OH, PA, VA, and WV, weighted by sales in each state, as reported in Form EIA-826 database. Wholesale prices represent monthly day ahead indices for power at PJM WEST, weighted by peak and off-peak hours, as reported by *Platts*.

Southwest Average Retail Rates and Wholesale Prices



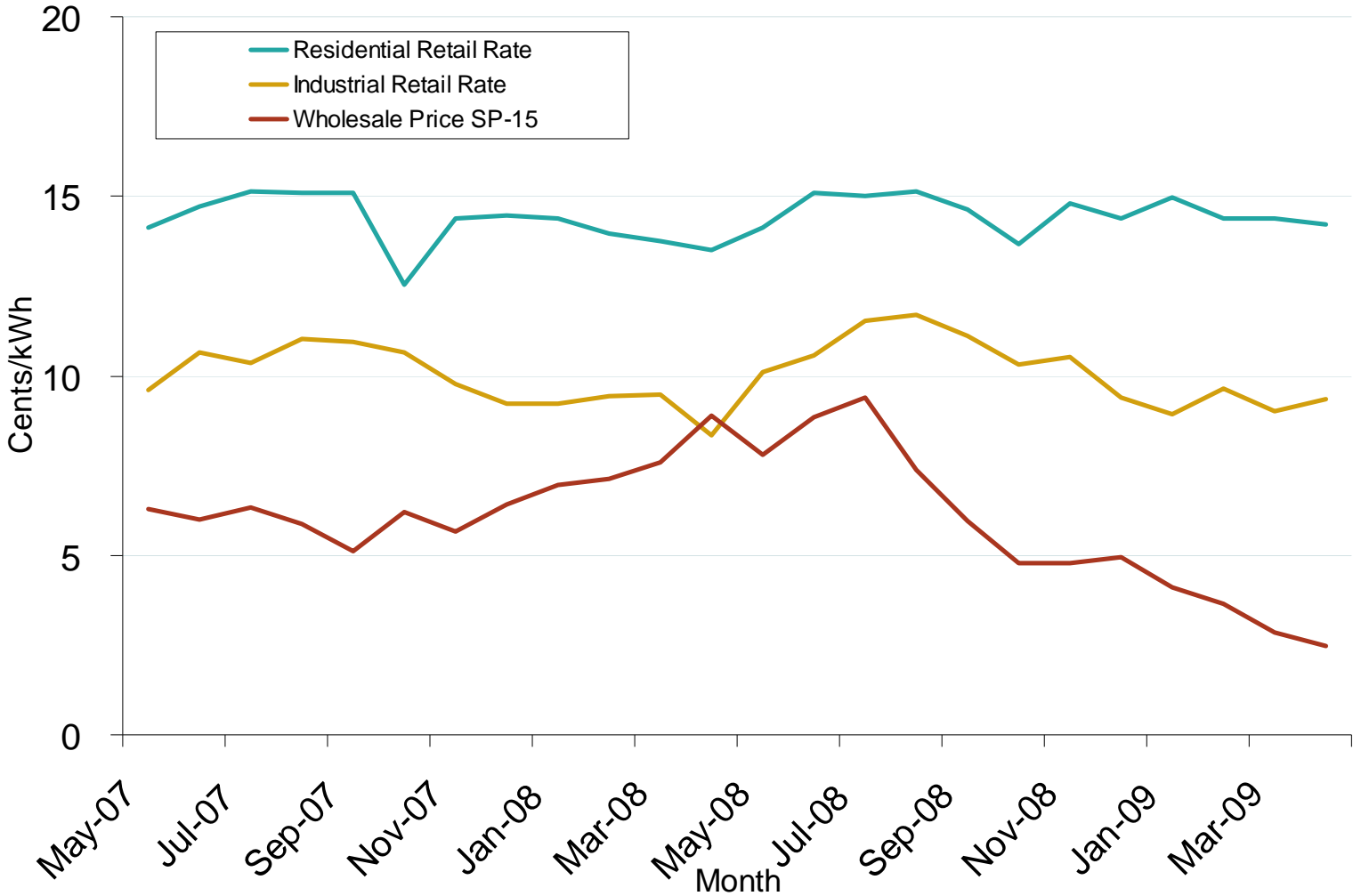
Notes: Retail rates represent average monthly rates for AZ, CO, NM, NV, and UT, weighted by sales in each state, as reported in Form EIA-826 database. Wholesale prices represent monthly day ahead indices for power at PALO VERDE, weighted by peak and off-peak hours, as reported by *Platts*.

Northwest Average Retail Rates and Wholesale Prices



Notes: Retail rates represent average monthly rates for OR, WA, ID, MT, WY, weighted by sales in each state, as reported in Form EIA-826 database. Wholesale prices represent monthly day ahead indices for power at MID-COLUMBIA, weighted by peak and off-peak hours, as reported by *Platts*.

California Average Retail Rates and Wholesale Prices

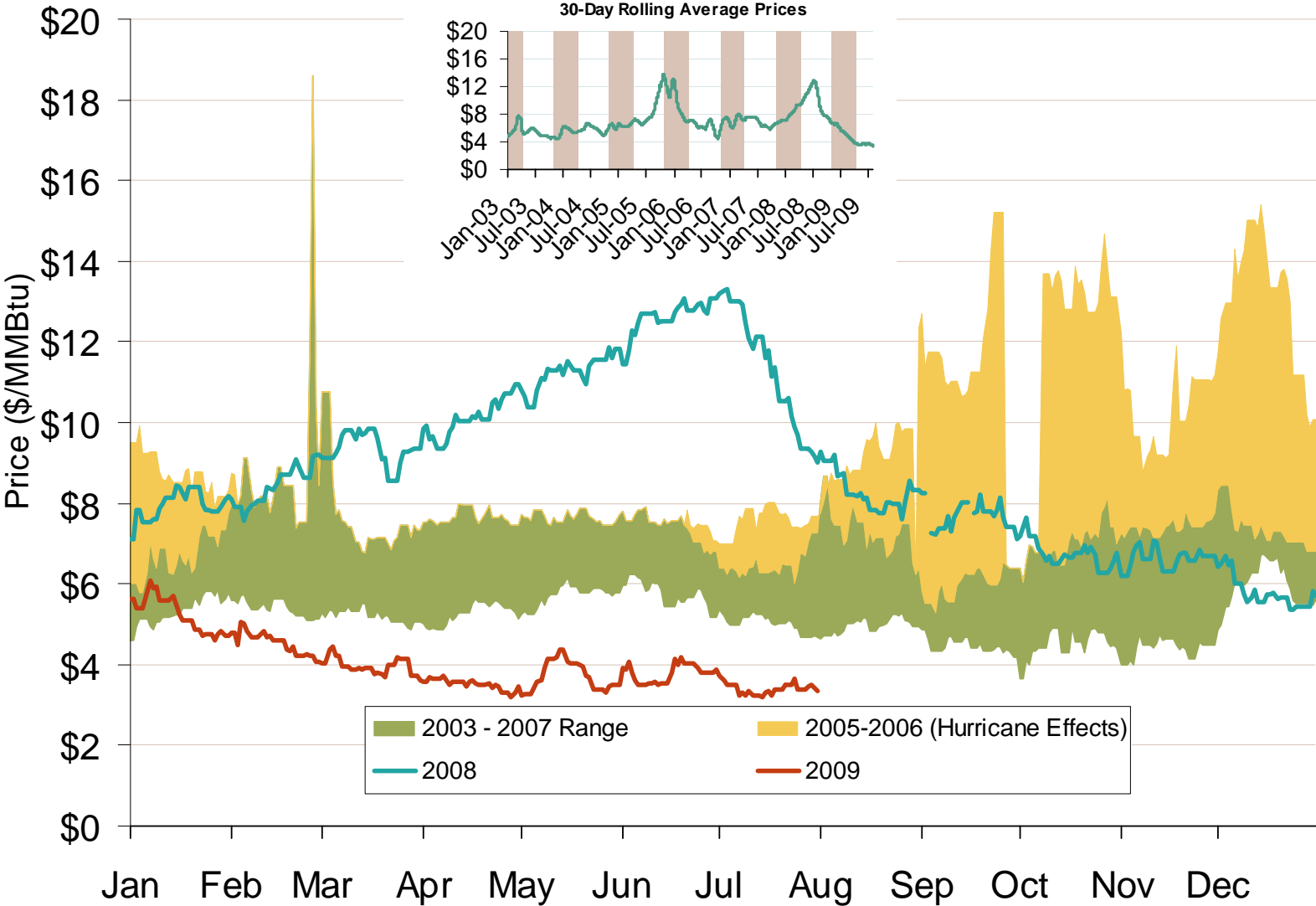


Notes: Retail rates represent average monthly rates for CA as reported in Form EIA-826 database. Wholesale prices represent monthly day ahead indices for power at SP-15, weighted by peak and off-peak hours, as reported by *Platts*.
August 2009 National Snapshot Report

A decorative graphic consisting of several thick, parallel red lines. Two lines are vertical, intersecting with three horizontal lines. The lines have a slight blur or glow effect.

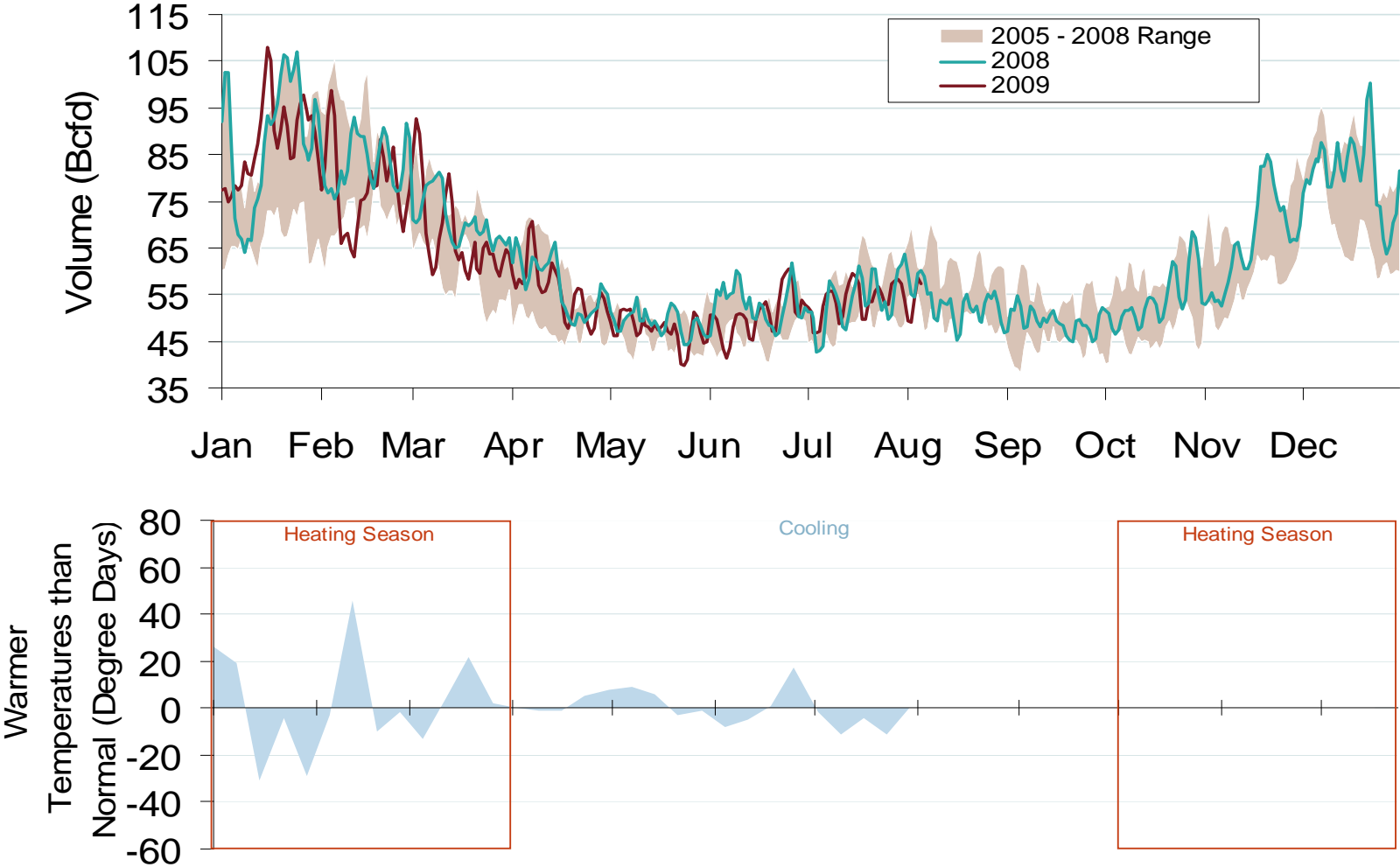
Natural Gas and Fuel Markets

Henry Hub Natural Gas Daily Spot Prices 2008, 2009 and 2003-2007 Year Range



Source: Derived from *Platts* data.

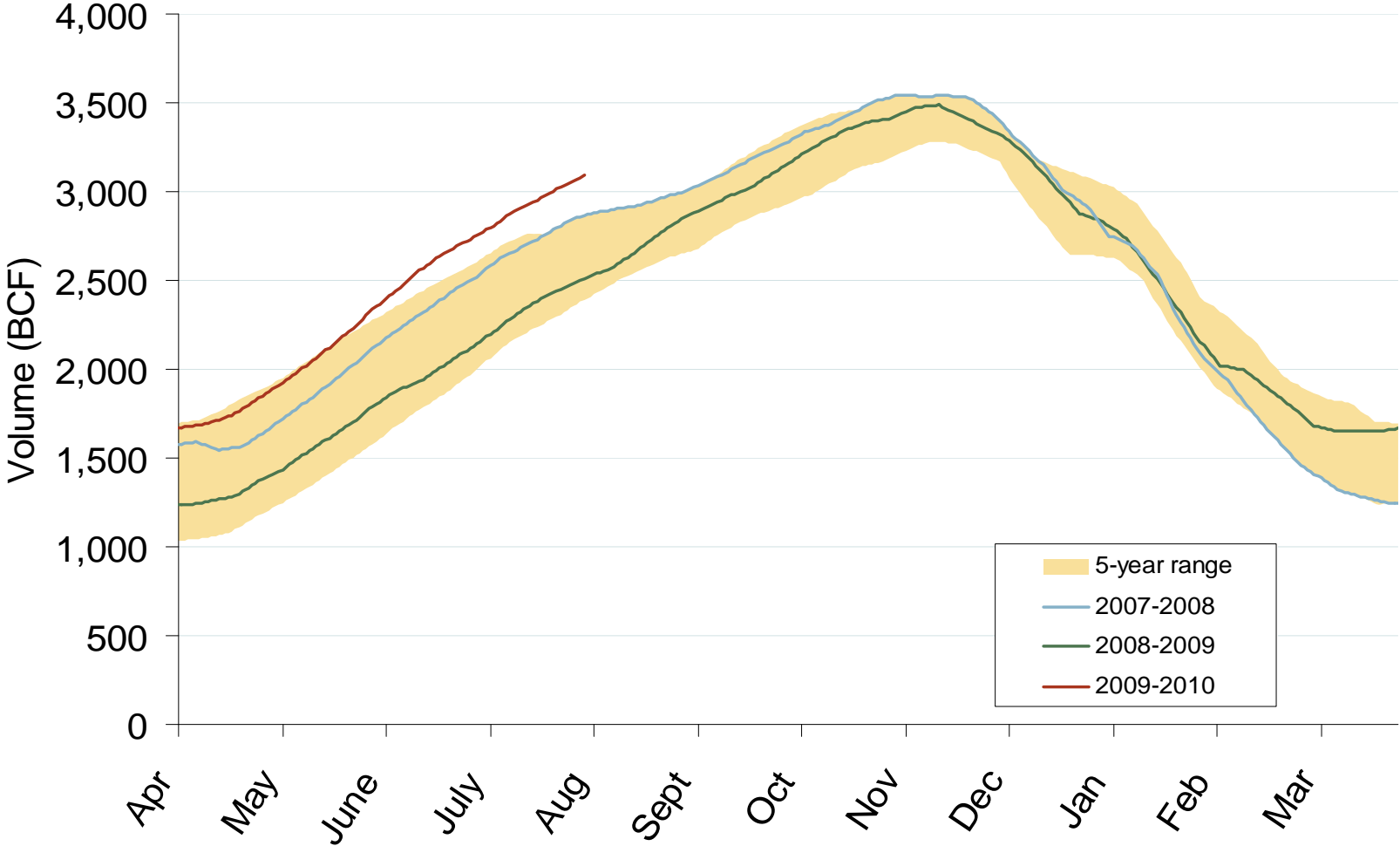
Total U.S. Natural Gas Demand (All Sectors) and Temperatures



Source: Derived from *Bentek Energy* data.
August 2009 National Snapshot Report

Updated August 7, 2009

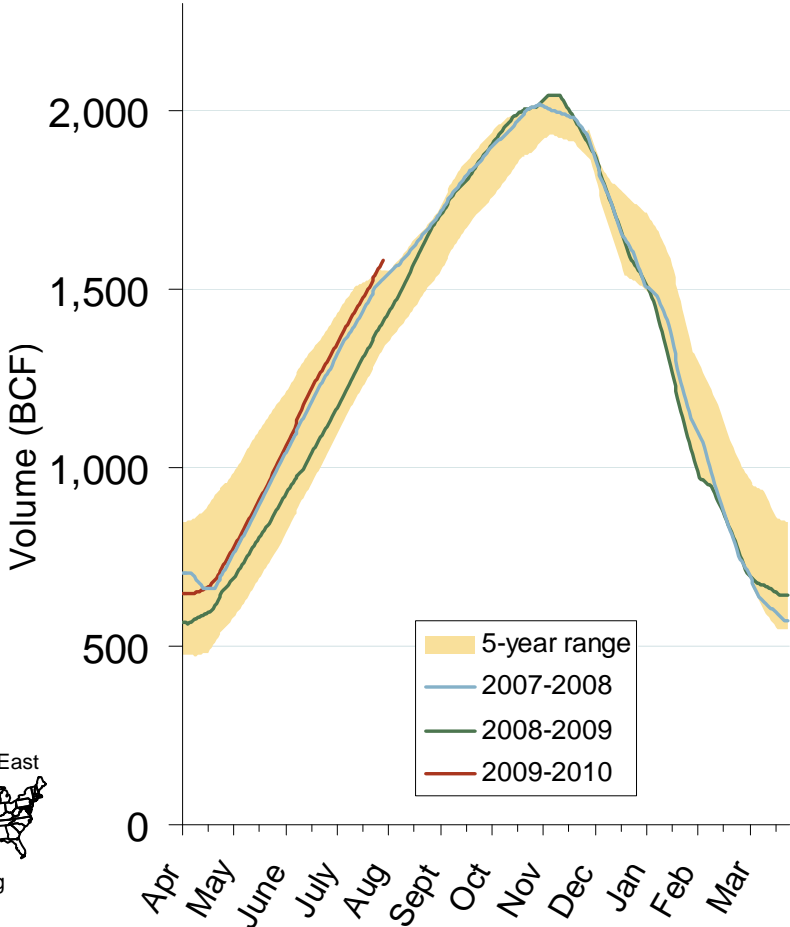
Total U.S. Working Gas in Storage



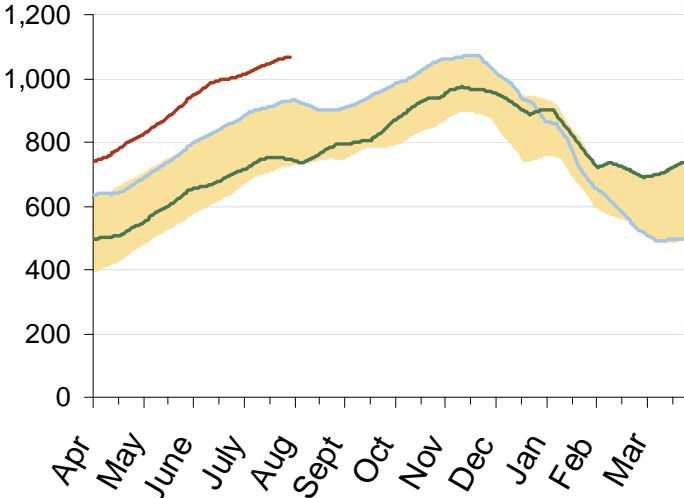
Source: Derived from EIA data.
August 2009 National Snapshot Report

Regional Totals of Working Gas in Storage

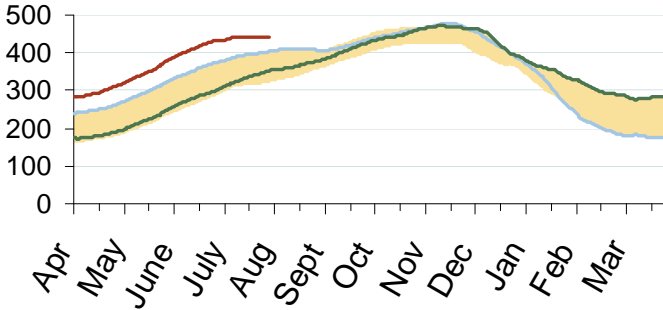
Eastern Consuming Region



Producing Region

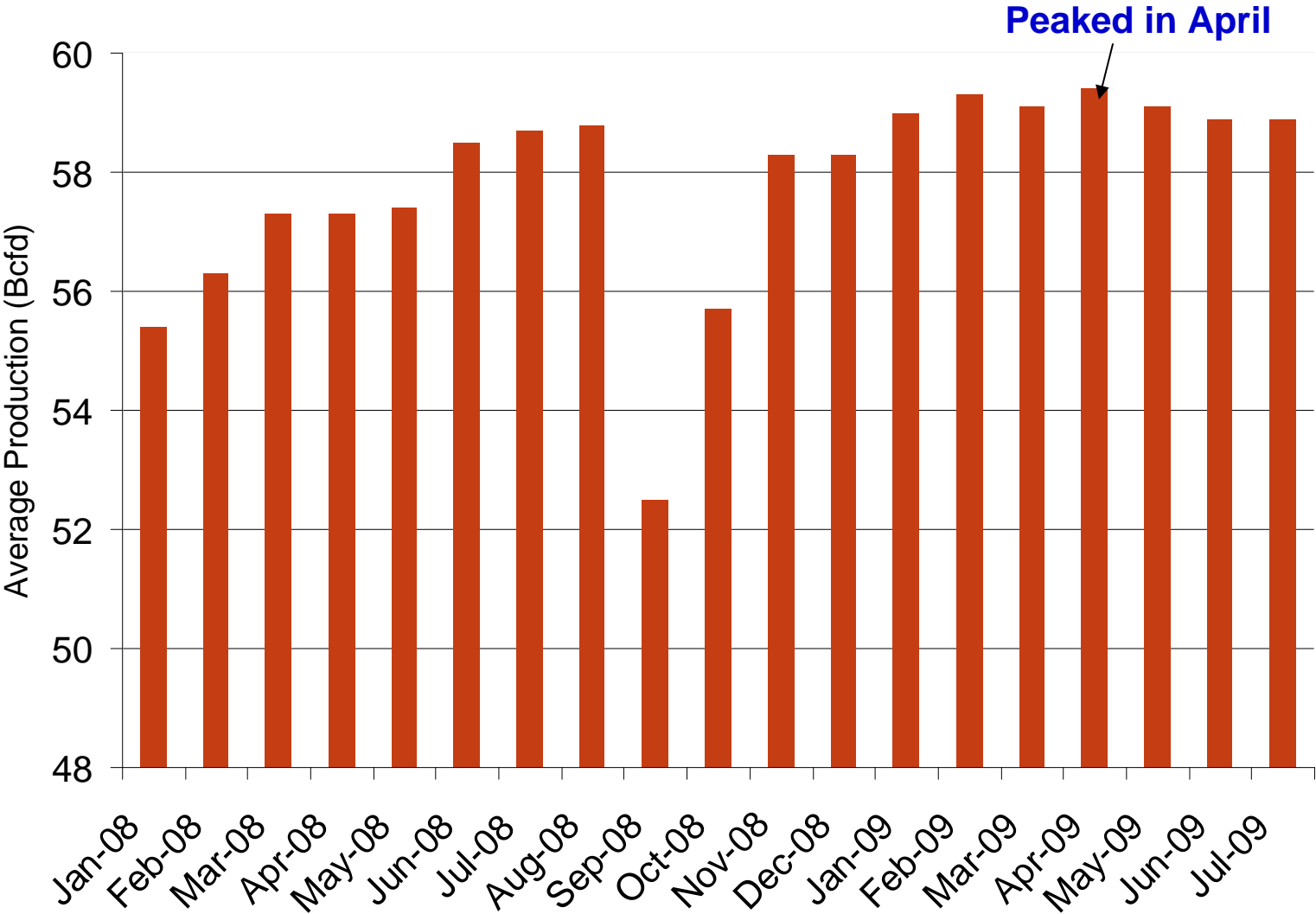


Western Consuming Region



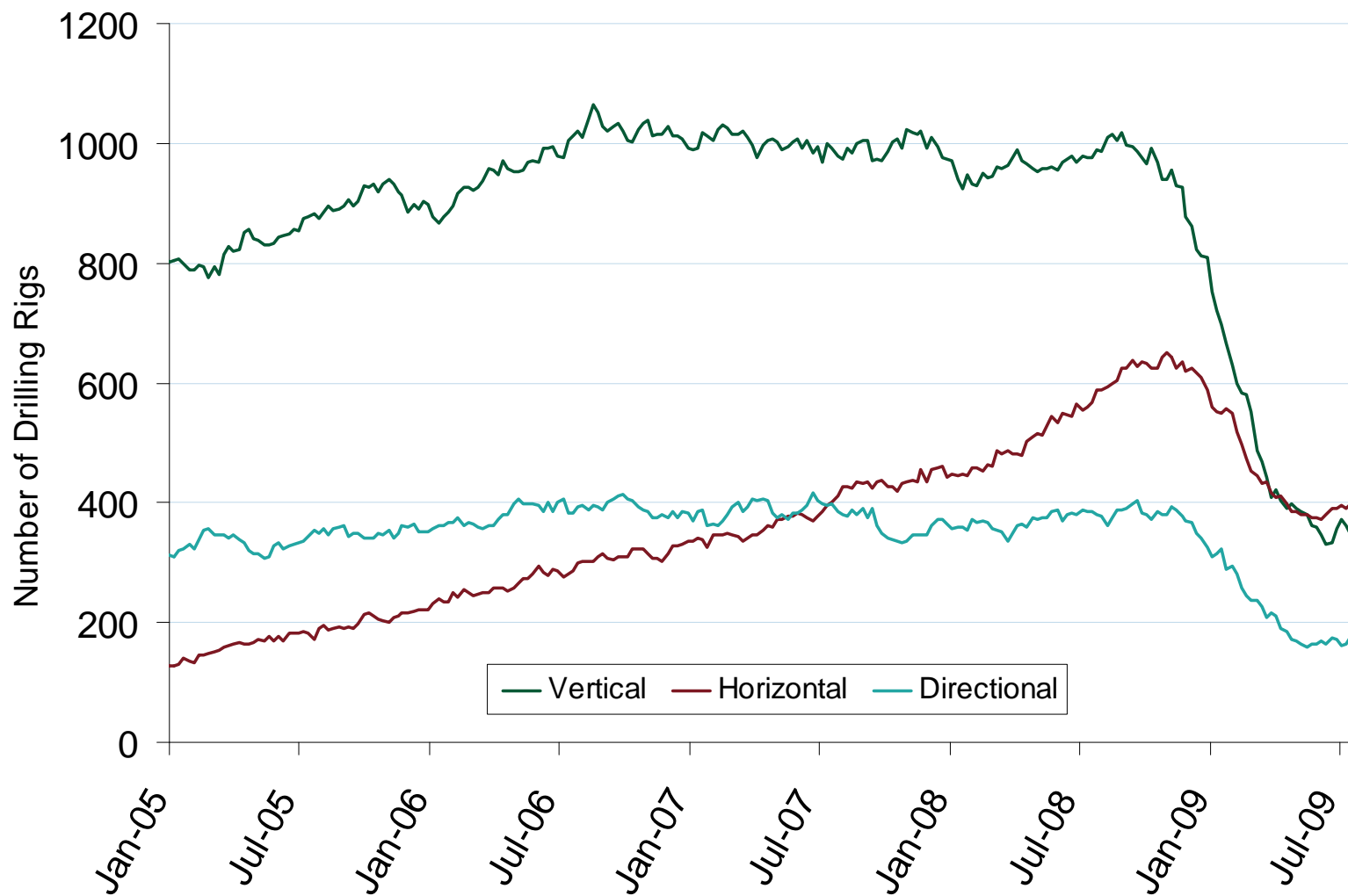
Source: Derived from EIA data.

U.S. Gas Production



Source: Derived from *Bentek* data.
August 2009 National Snapshot Report

U.S. Oil and Natural Gas Drilling Rig Count by Type

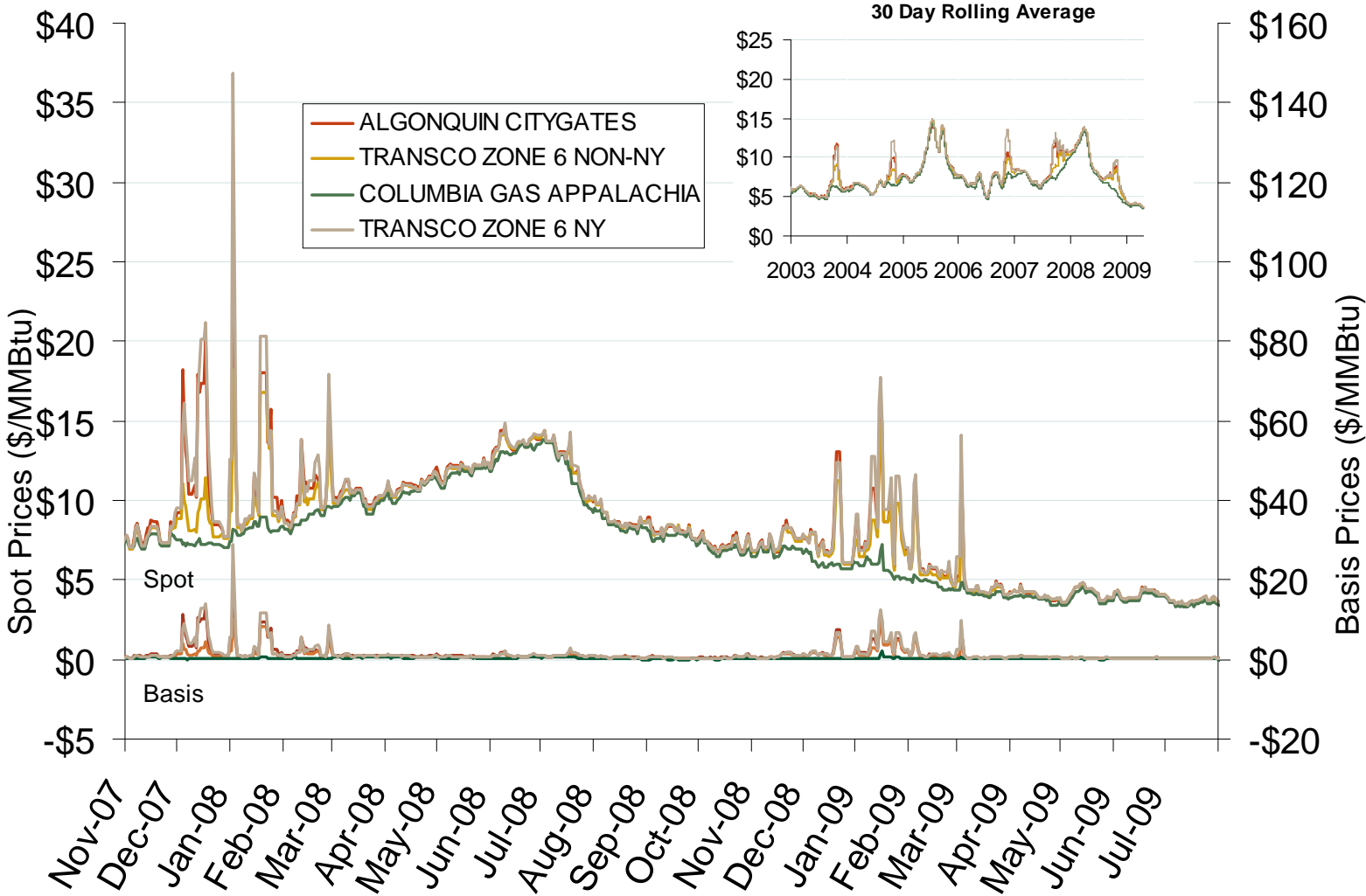


Source: Derived from *Platts* and *Baker Hughes* data.
August 2009 National Snapshot Report

Updated August 7, 2009

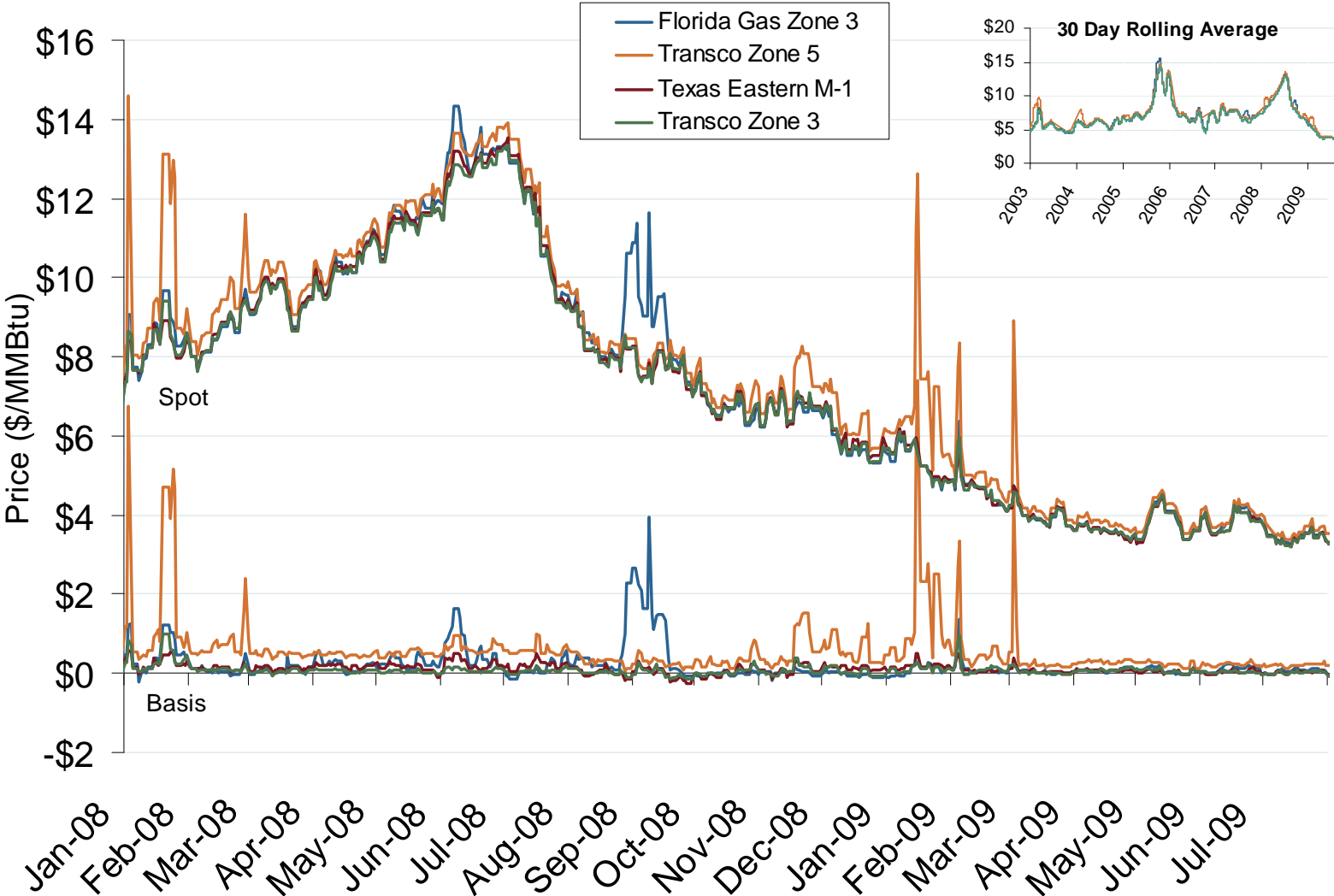
20018

Northeastern Spot Prices and Basis



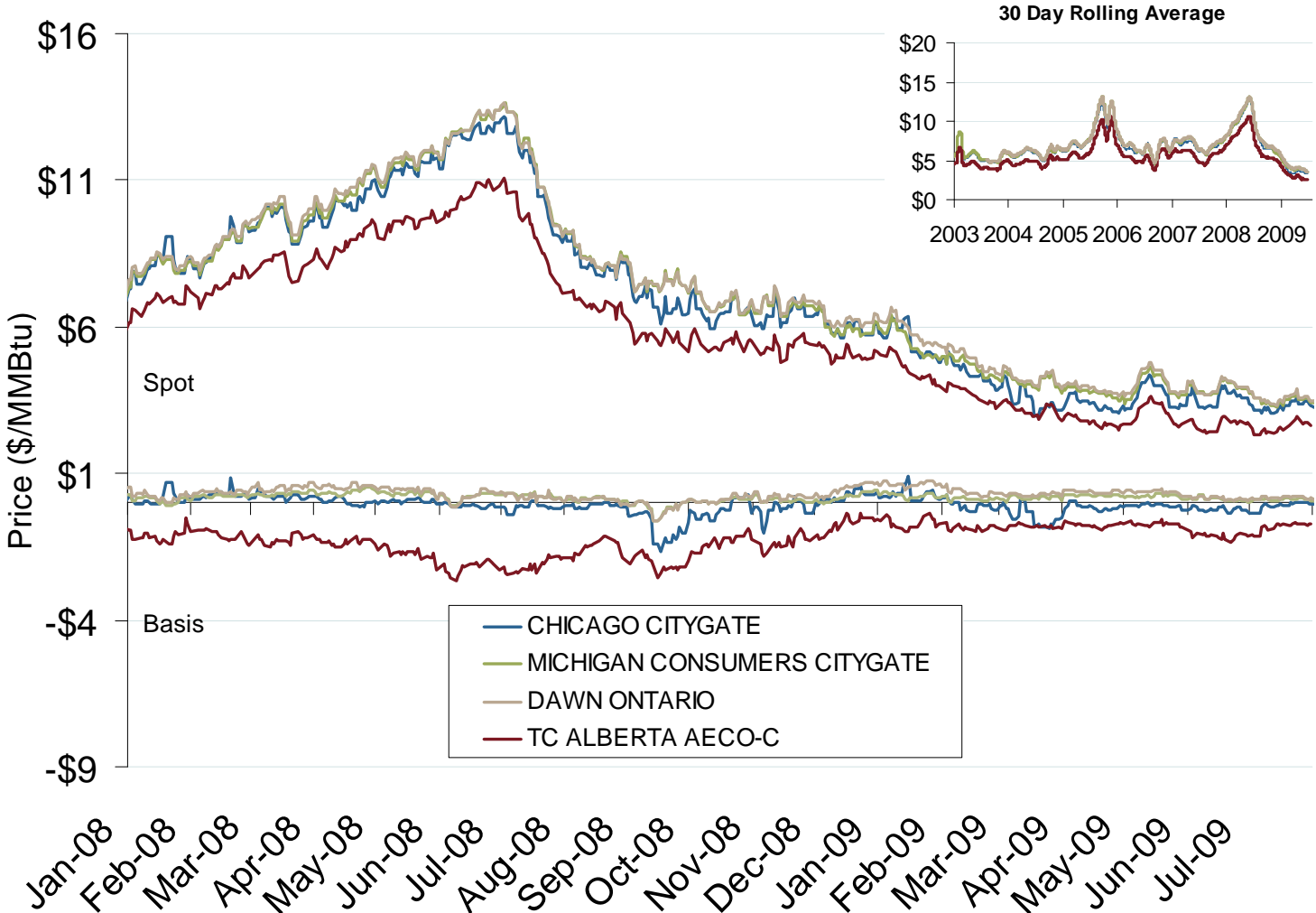
Source: Derived from *Platts* data.

Southeastern Day-Ahead Hub Spot Prices and Basis



Source: Derived from Platts data.
August 2009 National Snapshot Report

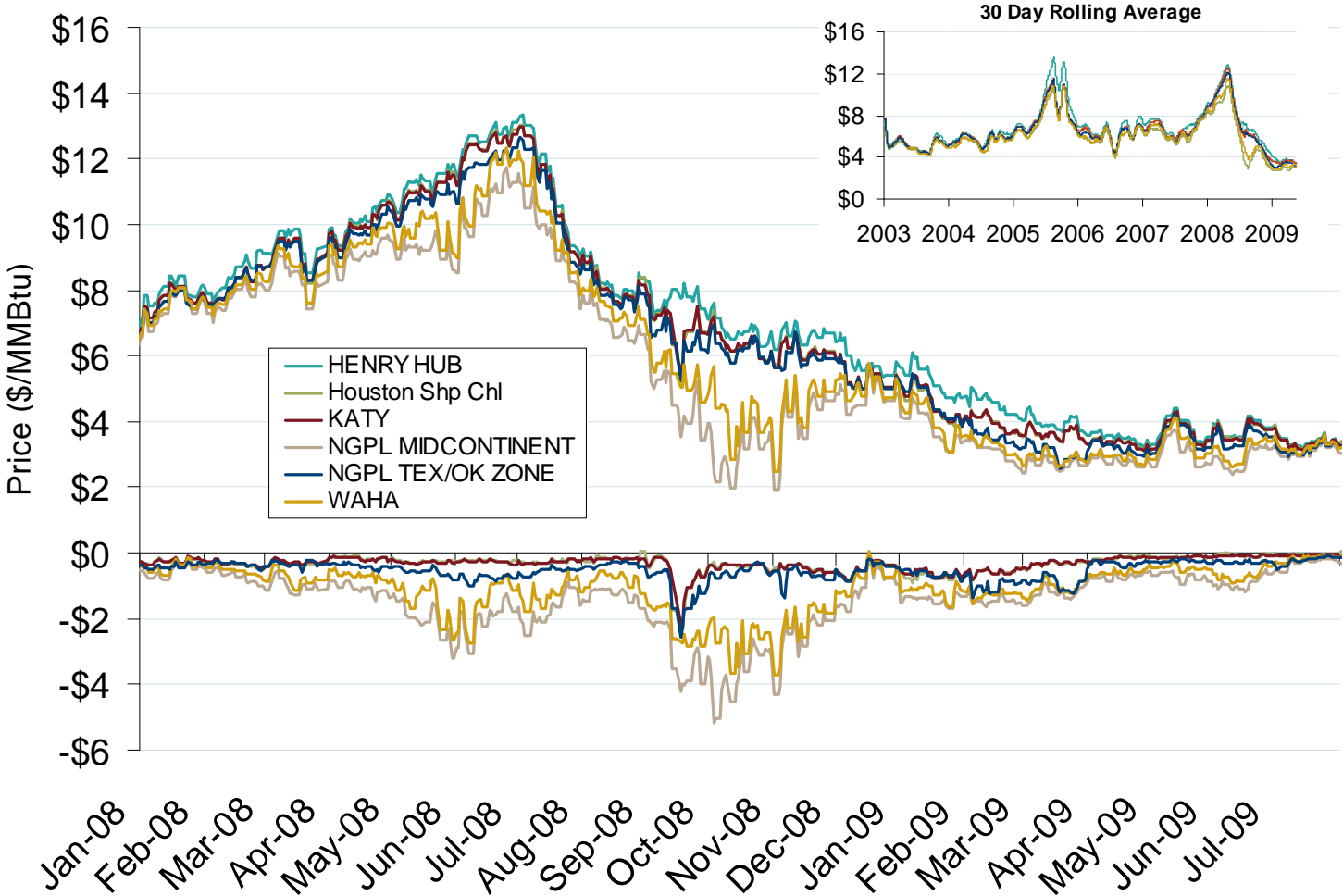
Midwestern Day-Ahead Hub Spot Prices and Basis



Source: Derived from Platts data.
August 2009 National Snapshot Report

Updated August 7, 2009

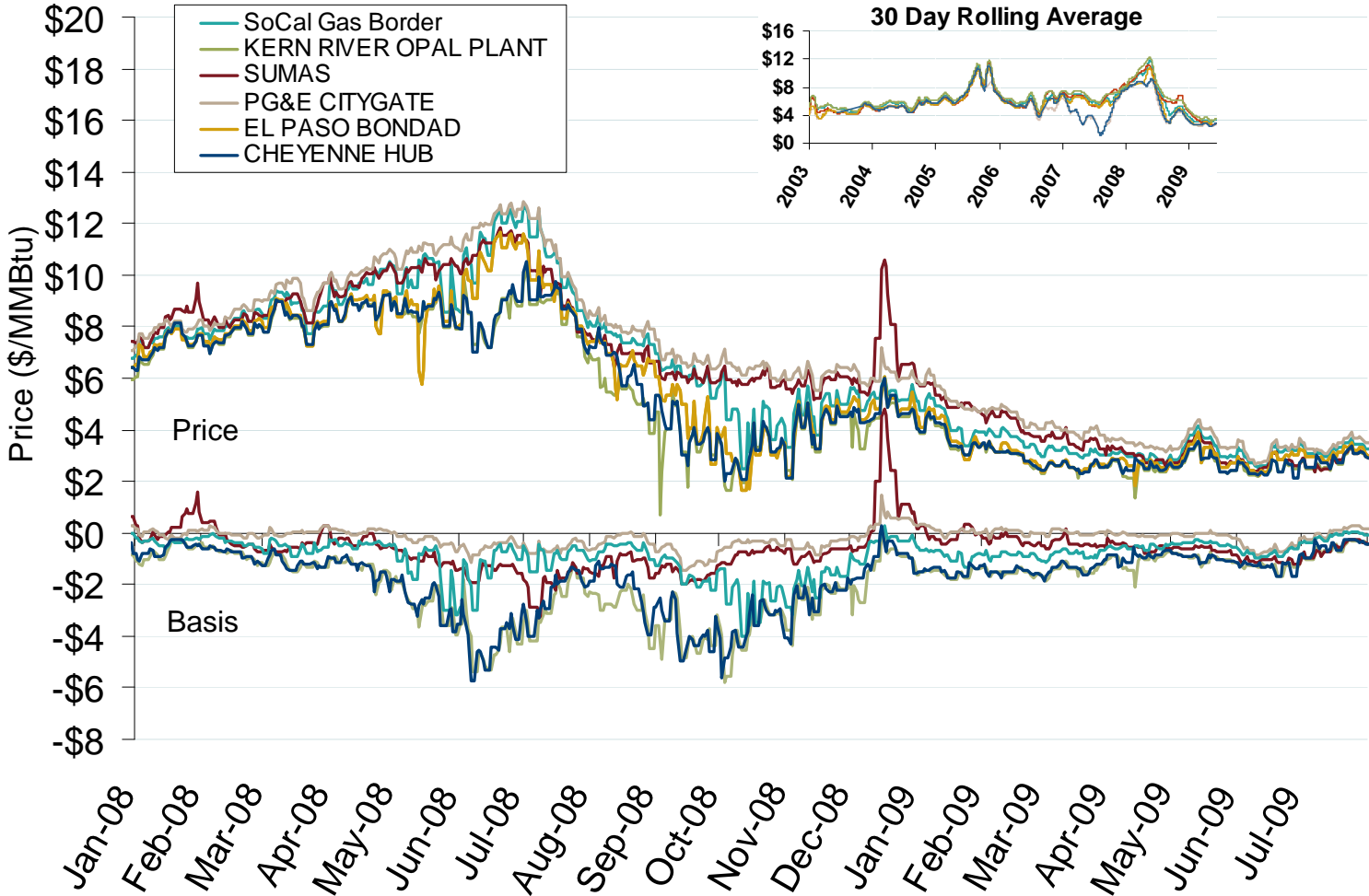
South Central Day-Ahead Hub Spot Prices and Basis



Source: Derived from *Platts* data.
August 2009 National Snapshot Report

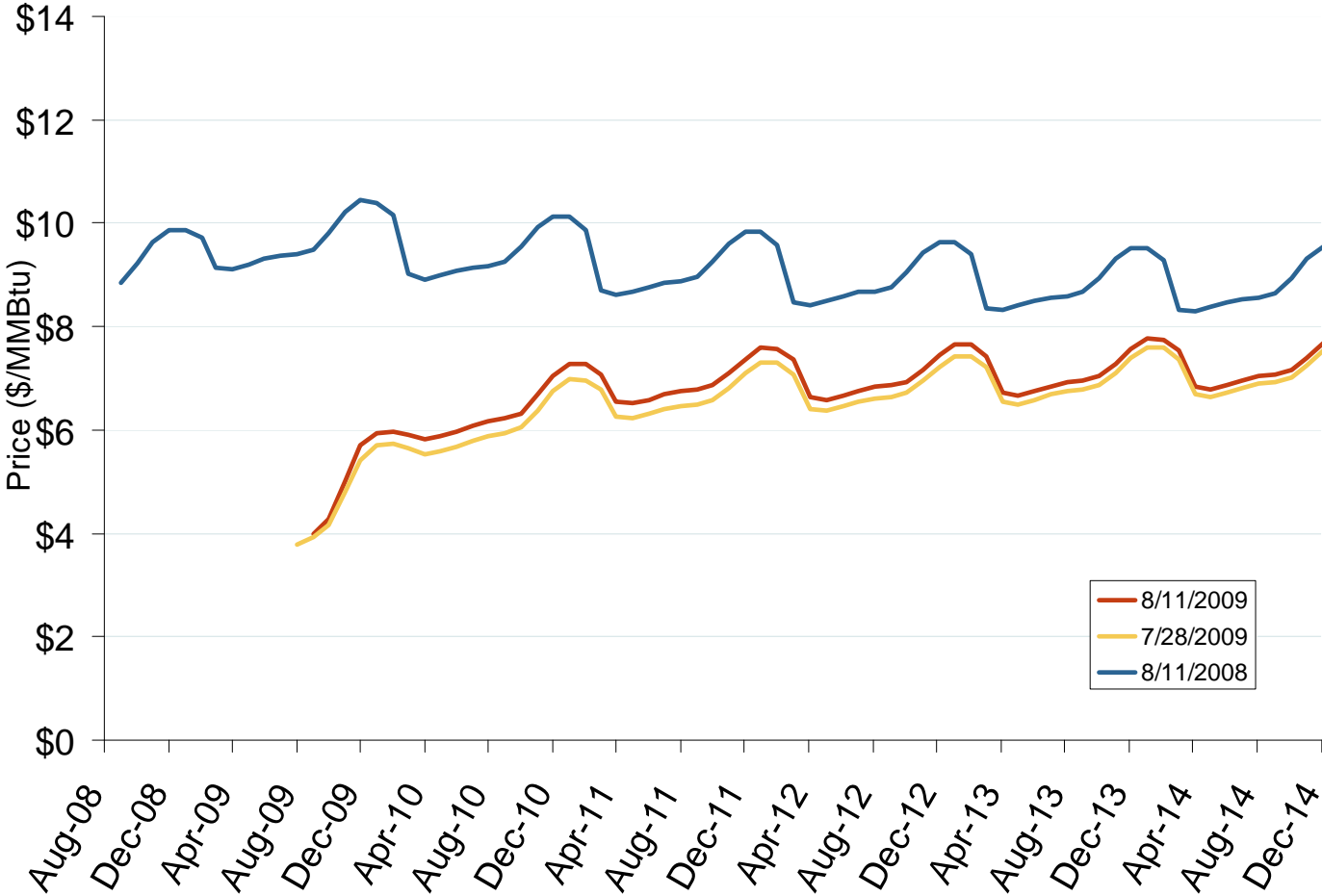
Updated August 7, 2009

Western Day-Ahead Hub Spot Prices and Basis



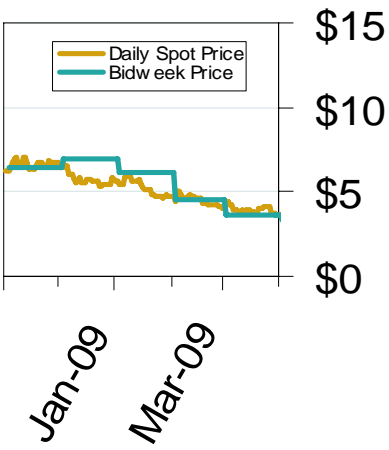
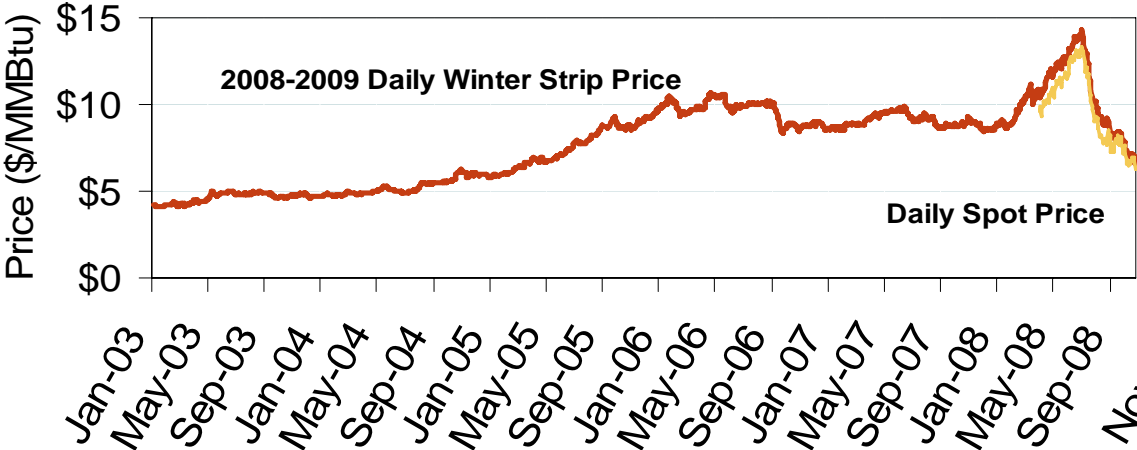
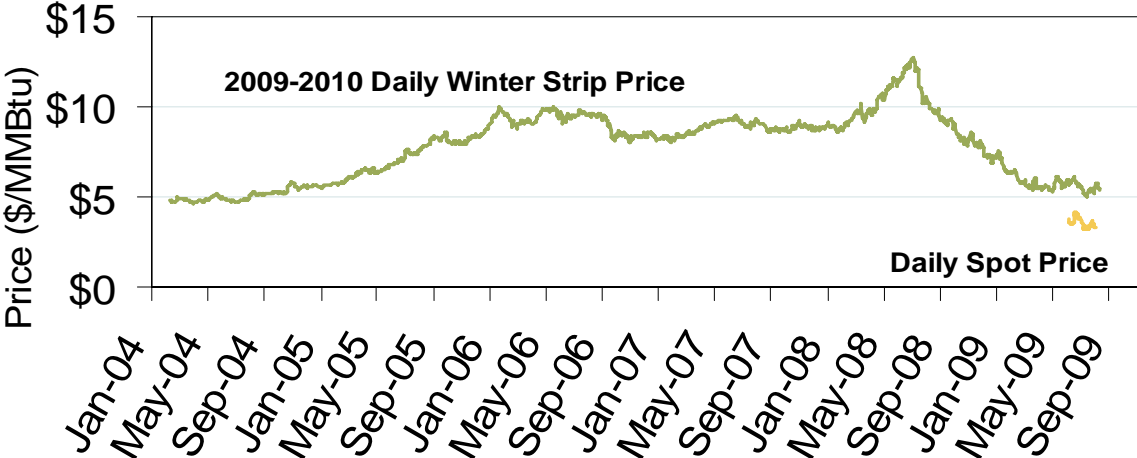
Source: Derived from Platts data.

NYMEX Natural Gas Forward Price Curve



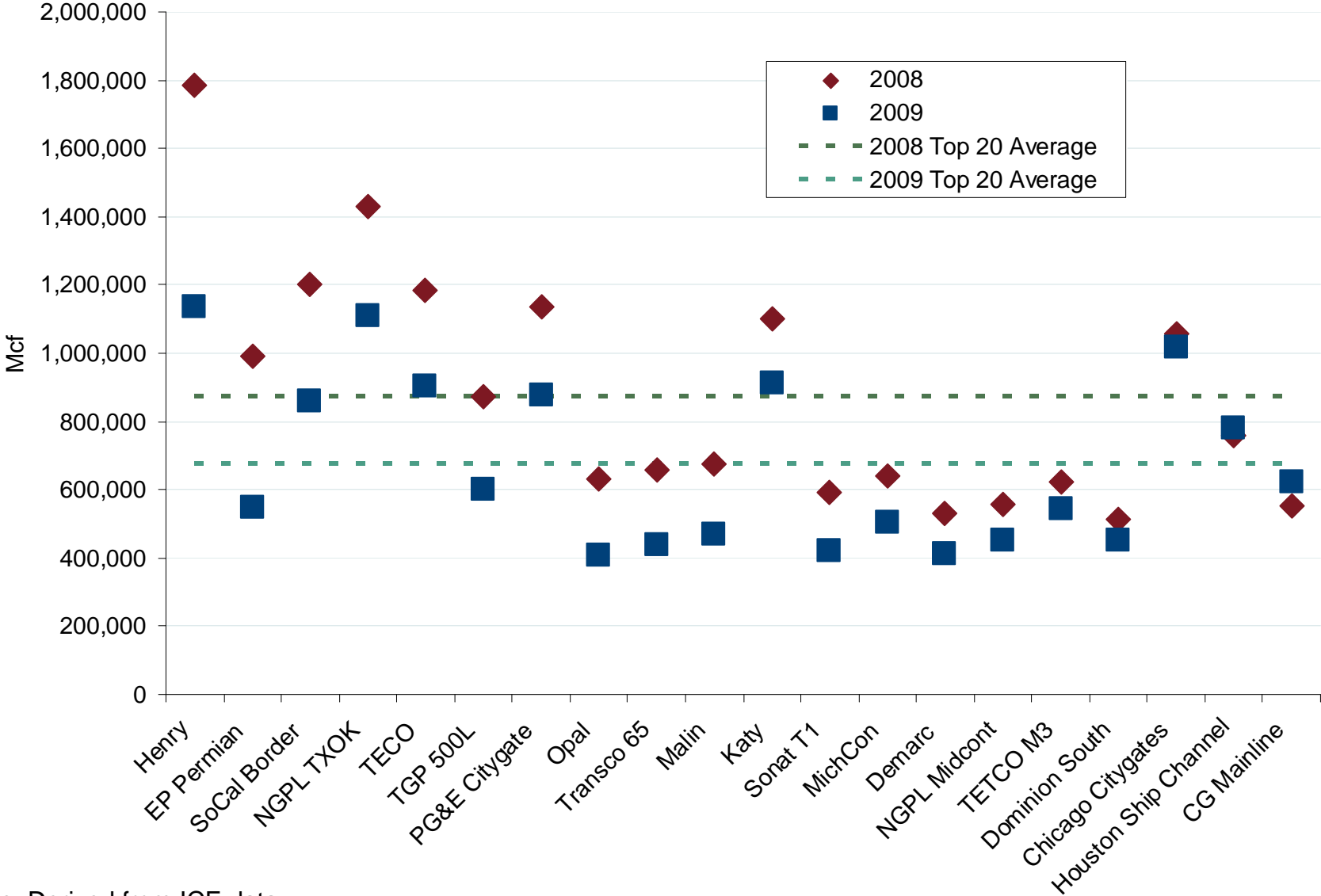
The NYMEX futures contract trades in 10,000 million Btu units. The blue series shows the forward price curve for these contracts 1-year ago. The red and yellow curves show prices for contracts traded on the current and previous months.

Natural Gas Winter Futures Strip and Daily Henry Hub Spot and Bidweek Prices



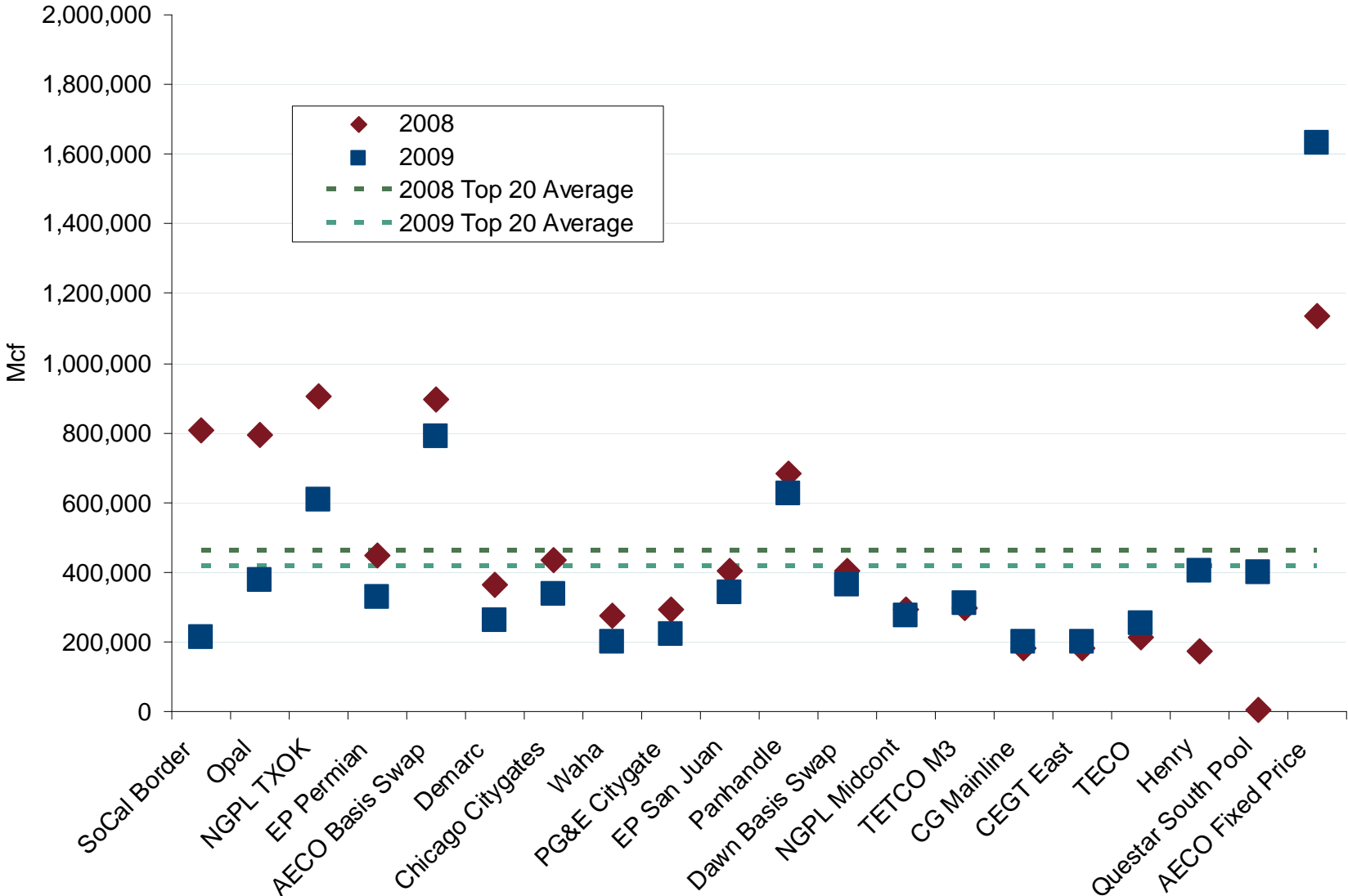
Source: Derived from Platts and Nymex data.
August 2009 National Snapshot Report

Average Daily Day Ahead Volumes on ICE



Source: Derived from ICE data. August 2009 National Snapshot Report

Average Monthly Bidweek Volumes on ICE

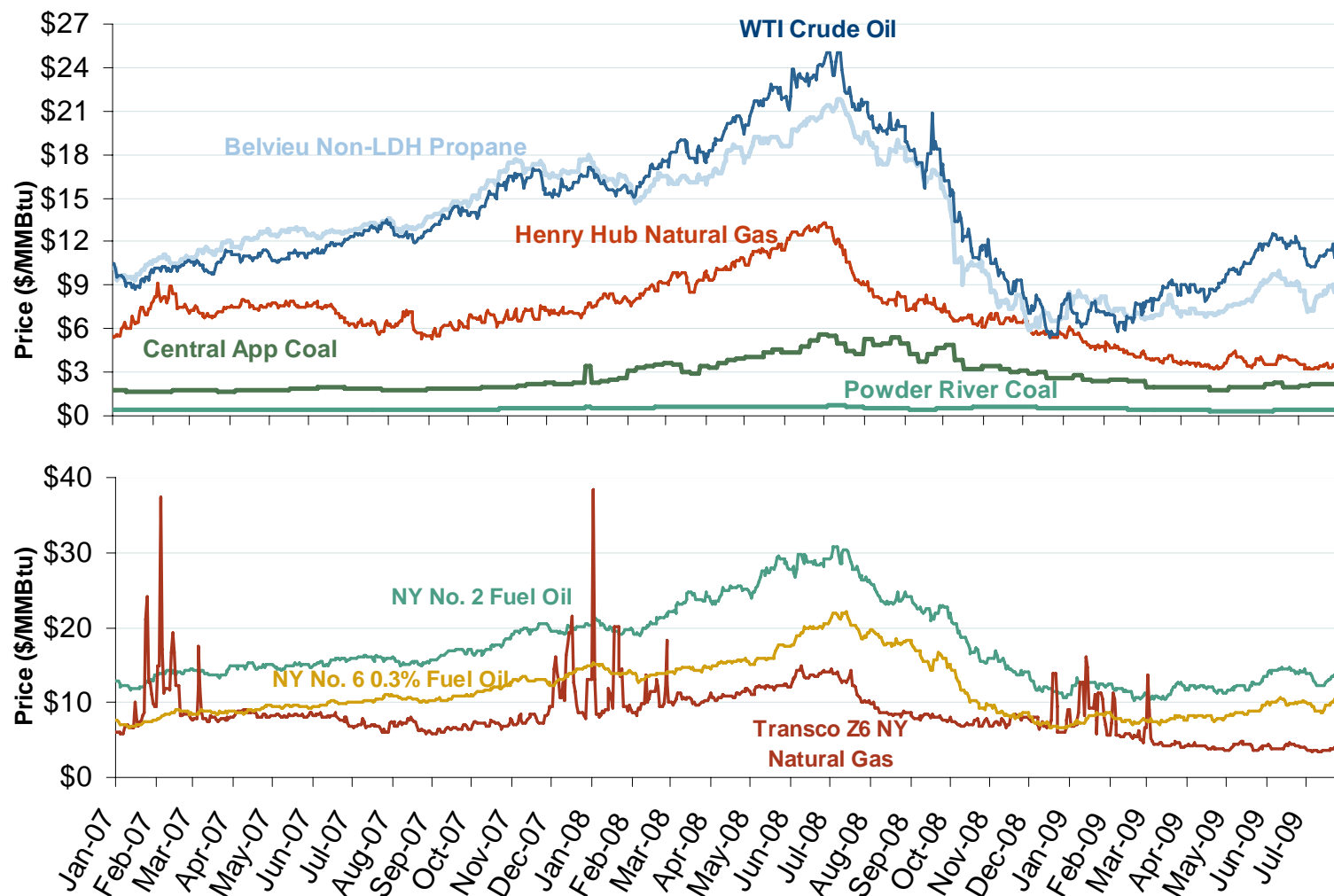


Source: Derived from ICE data.
August 2009 National Snapshot Report

Position Limits Established on Contracts & Swaps

- NYMEX position limit of 1,000 NG (4,000 NN) contracts in prompt-month settlement
- Limit applies to Oct-09 contract onward
- ICE to follow suit within 90 days of NYMEX
- Effect will be to move to mid-month & drive trading into the bilateral market
- Proposed legislation to place bilateral deals under similar position limits
- Ultimate effect may drive trading overseas

Oil, Coal, Natural Gas and Propane Daily Spot Prices

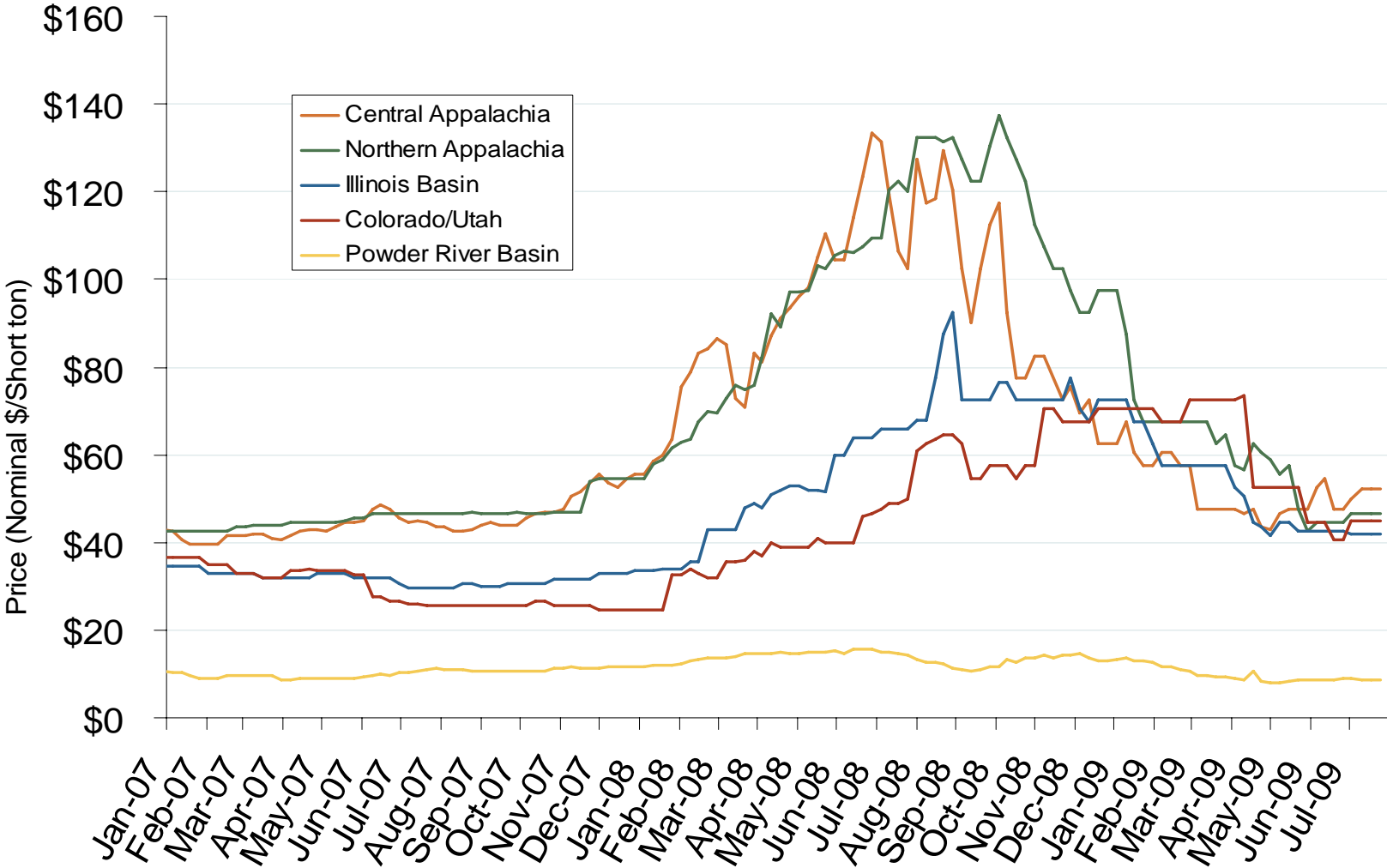


Source: Derived from *ICE* and *Bloomberg* data.

Note: Coal prices are quoted in \$/ton. Conversion factors to \$/MMBtu are based on contract specifications of 12,000 btus/pound for Central Appalachian coal and 8800 btus/pound for Powder River Basin coal.

Updated August 7, 2009

Regional Coal Spot Prices

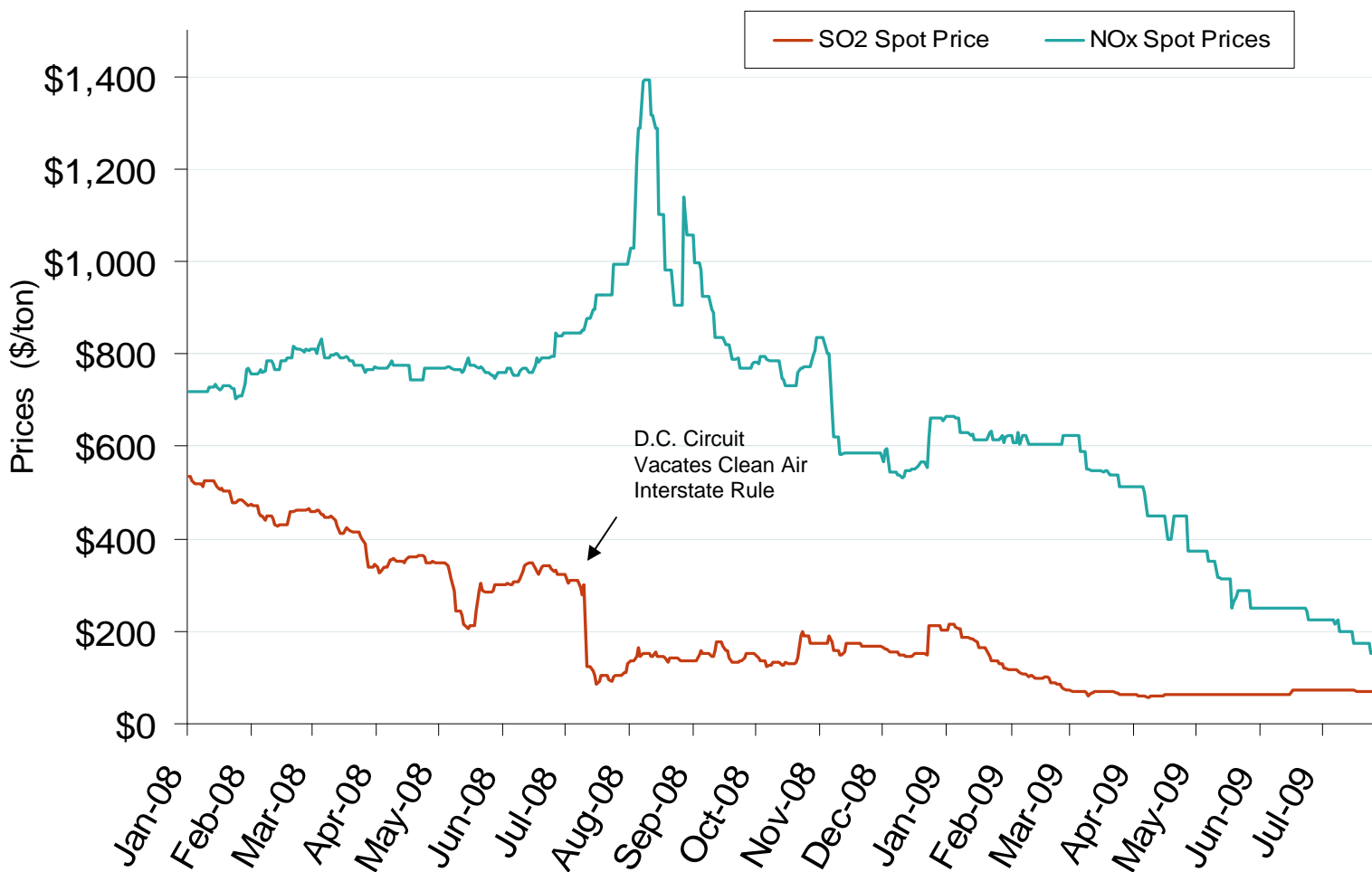


Note: Does not reflect the delivered price of coal; excludes incremental cost of emissions allowances.

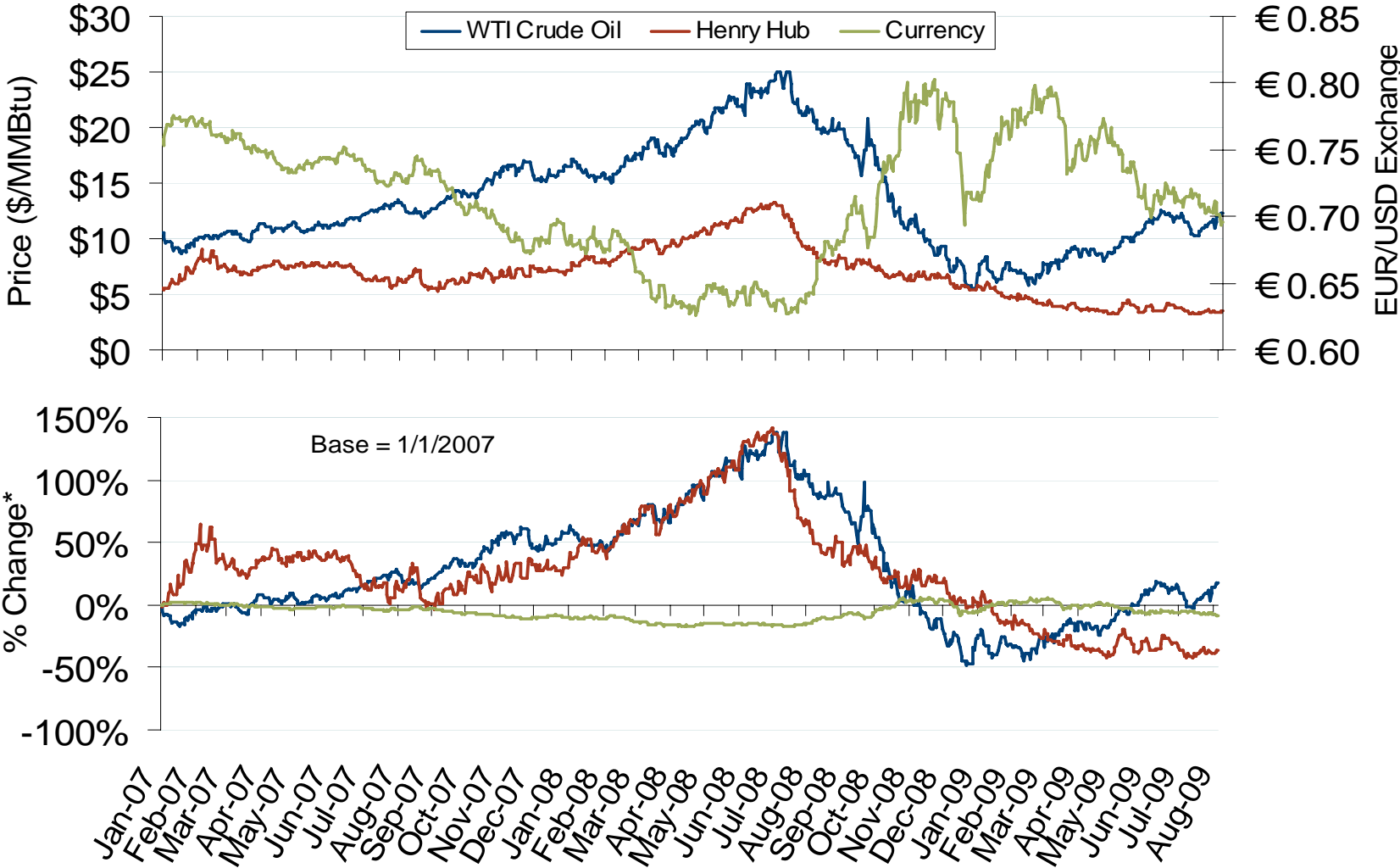
Source: Derived from *Bloomberg* data.
August 2009 National Snapshot Report

Updated August 7, 2009

SO₂ Allowance Spot Prices and NOx Seasonal Allowance Spot Prices

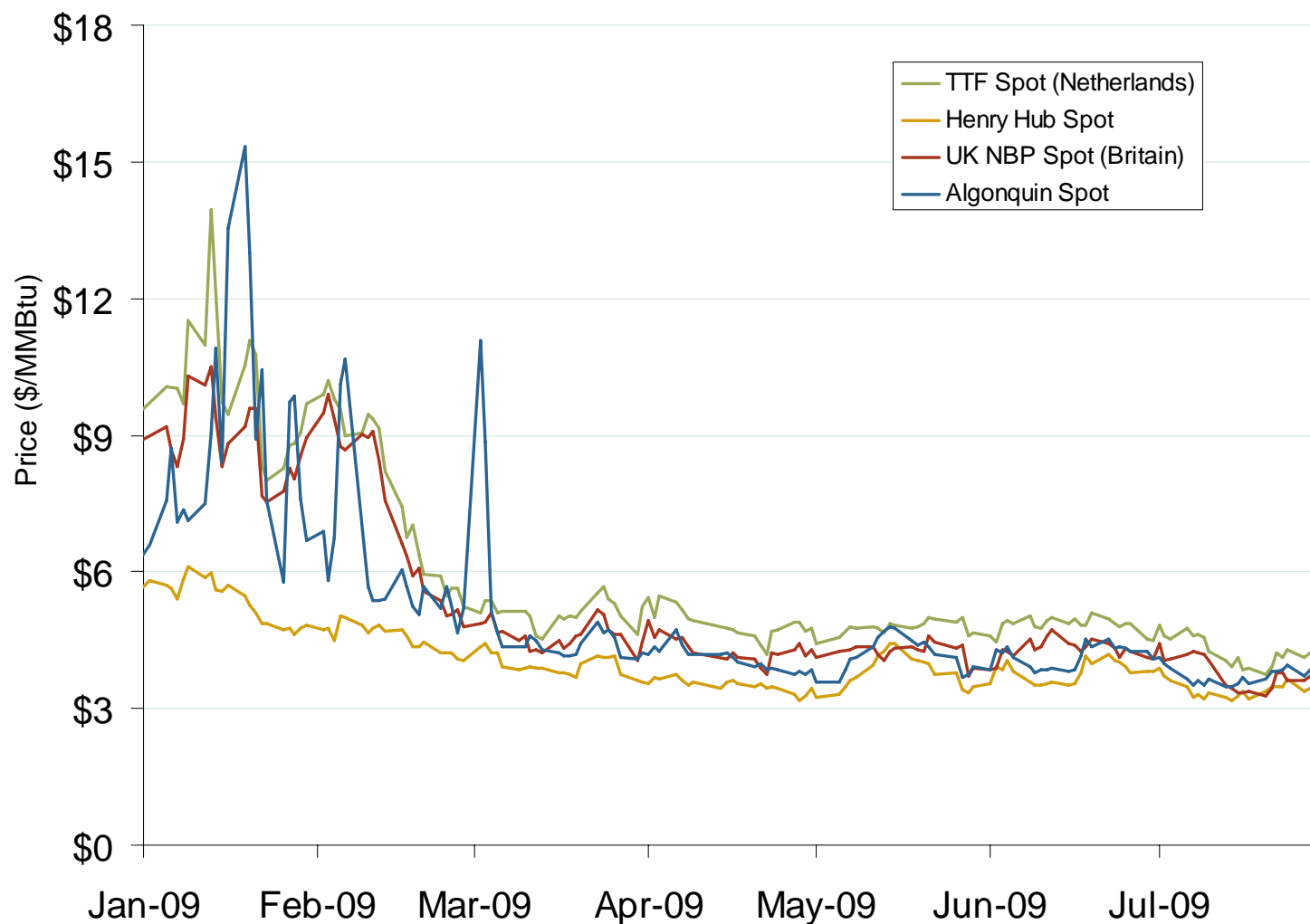


Oil, Natural Gas and Currency Spot Prices



Source: Derived from *Bloomberg* data.

Atlantic Basin European and US Spot Natural Gas Prices



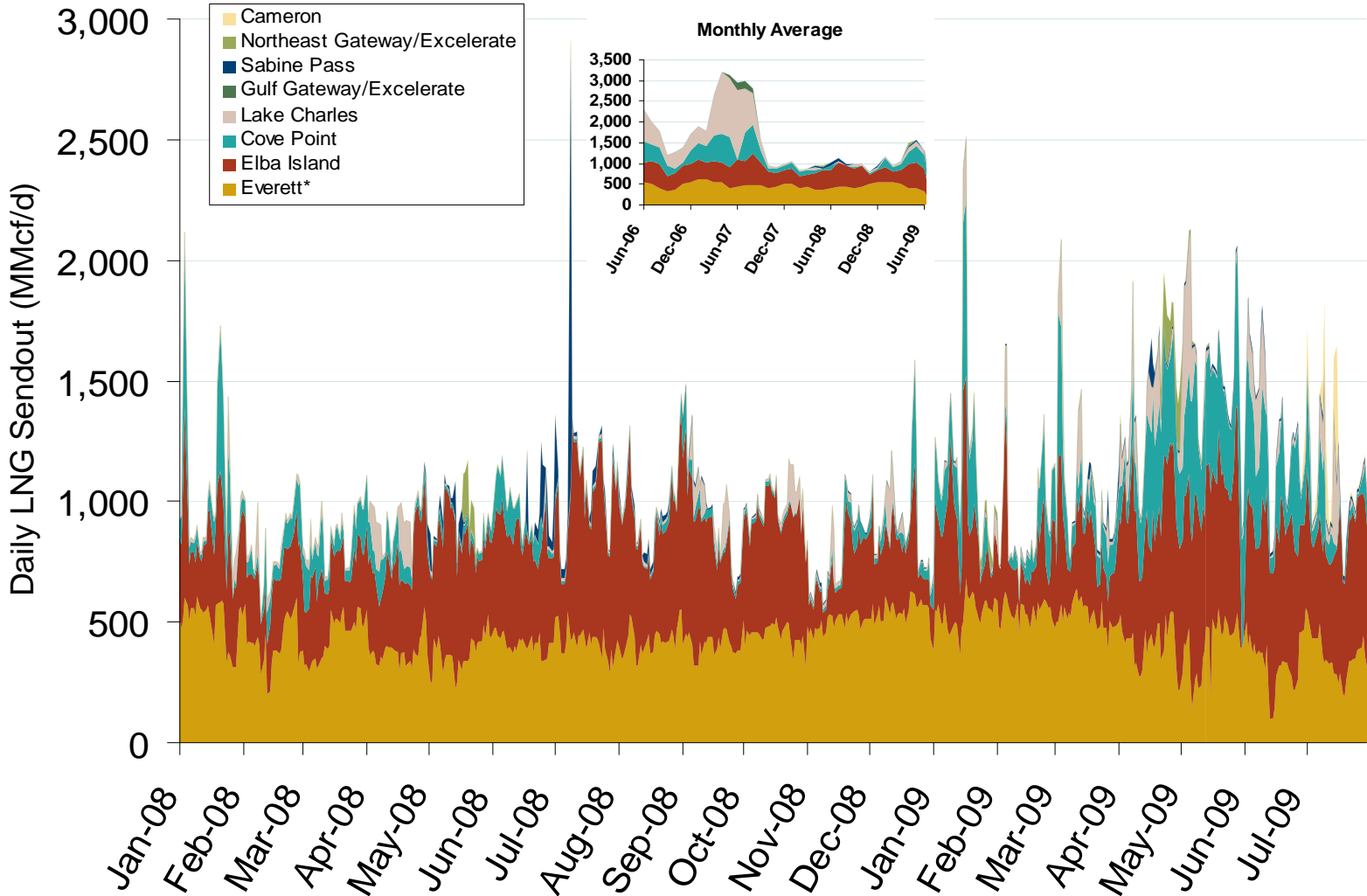
World LNG Estimated August 2009 Landed Prices



Source: Waterborne Energy, Inc. Data in \$US/MMBtu.
August 2009 National Snapshot Report

Updated August 7, 2009

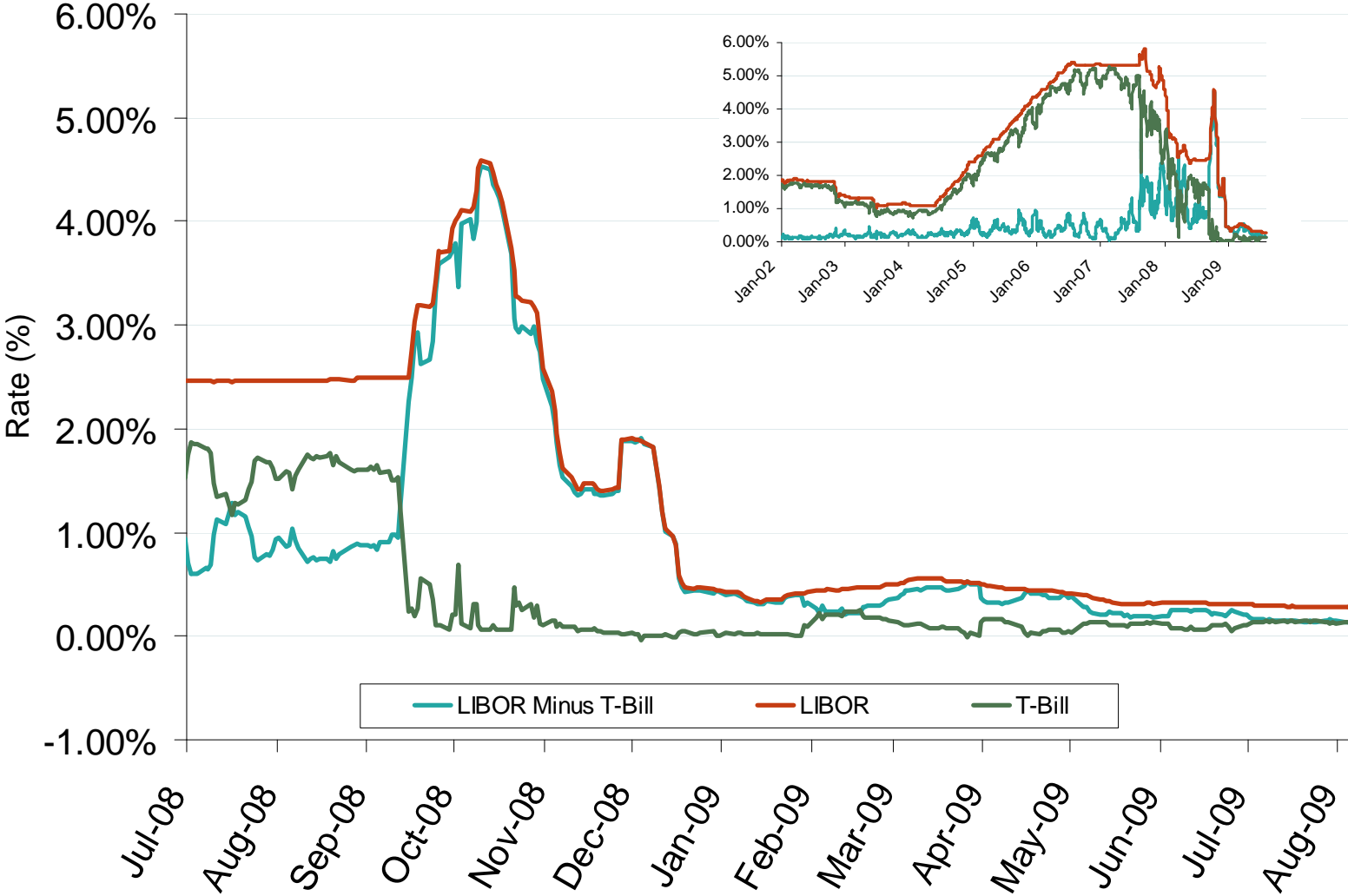
Daily Gas Sendout from Existing U.S. LNG Facilities



Source: Derived from Bentek data.

* Everett data includes flows onto the AGT and TGP interstate lines, plus estimates of flows to the Mystic 7 power plant, Keyspan Boston Gas, and LNG trucked out of the terminal. Excludes Freeport LNG which flows via intrastate pipelines.
August 2009 National Snapshot Report

One Month LIBOR and One Month US Treasury Bill Rates



Source: Derived from Bloomberg data.
August 2009 National Snapshot Report

Updated August 7, 2009