

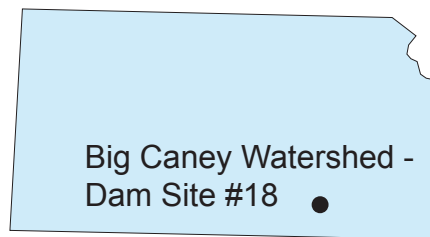
Watershed Operations

May 2009

Reinvesting in Big Caney Watershed - Site #18, Kansas

Introduction

When fully implemented, the Big Caney Watershed, Site 18 flood control dam will be stabilized. It has experienced two downstream slope embankment failures since 2006. An estimated 1,500 residents will benefit from the repair work on this site.



Dam Site 18 is located in Cowley County, Kansas.

Project Description

- **Location:** Cowley County, 4th Congressional District
- **Federal Funding:** \$214,000

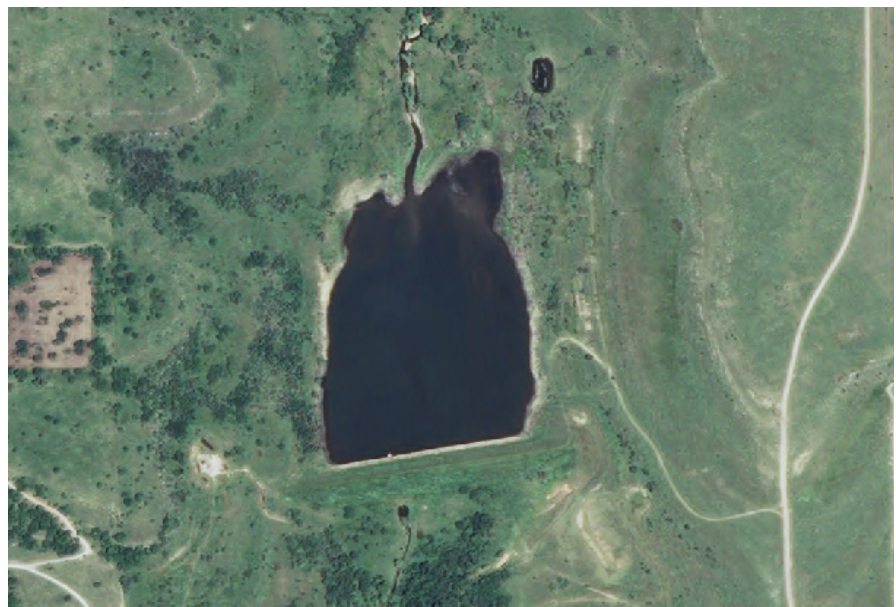
Partners

- USDA, Natural Resources Conservation Service
- Big Caney Watershed Joint District #31
- Chautauqua County Conservation District
- Cowley County Conservation District
- Elk County Conservation District
- Osage County (Oklahoma) Conservation District

Benefits

When the project is completed, seven county and/or township roads and bridges will be protected from flood damage. Approximately 1,500 residents and 20 farms and ranches in or near the watershed will benefit from increased public safety.

Funded through the American Recovery and Reinvestment Act (ARRA) of 2009, this project is part of the Obama Administration's plans to modernize the nation's infrastructure, jump-start the economy, and create jobs. NRCS is using Recovery Act dollars to update aging flood control structures, protect and maintain water supplies, improve water quality, reduce soil erosion, enhance fish and wildlife habitat, and restore wetlands. NRCS acquires easements and restores floodplains to safeguard lives and property in areas along streams and rivers that have experienced flooding.



Big Caney Watershed - Dam Site #18 is located in Cowley County, Kansas.

Reinvesting in Big Caney Watershed - Site #18, Kansas

Economic Opportunities

Site 18 yields an estimated \$25,500 in average annual flood reduction benefits. It provides flood protection on 12 miles of stream corridor with a floodplain that encompasses 20 farms and ranches and approximately 2,000 acres in agricultural land.

Statewide Perspective

Approximately 34,000 people live in or commute through the Big Caney project area. The area has income levels about 14 percent below the area mean.

For More Information

USDA, NRCS
760 South Broadway
Salina, Kansas 67401
Phone: 785-823-4500
Fax: 785-823-4540
www.ks.nrcs.usda.gov



The downstream slope of the dam on Site 18 has experienced two slope failures since the fall of 2006.

Helping People Help the Land

An Equal Opportunity Provider and Employer

