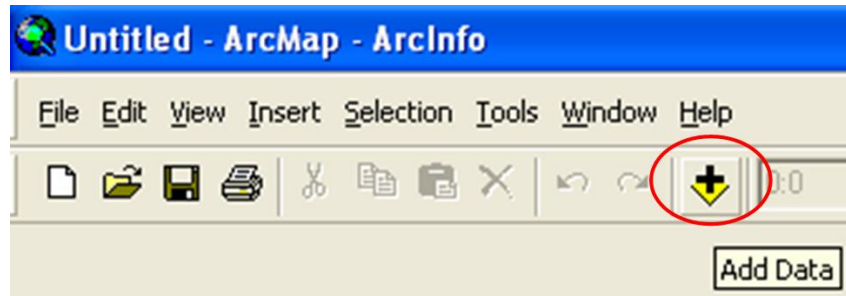
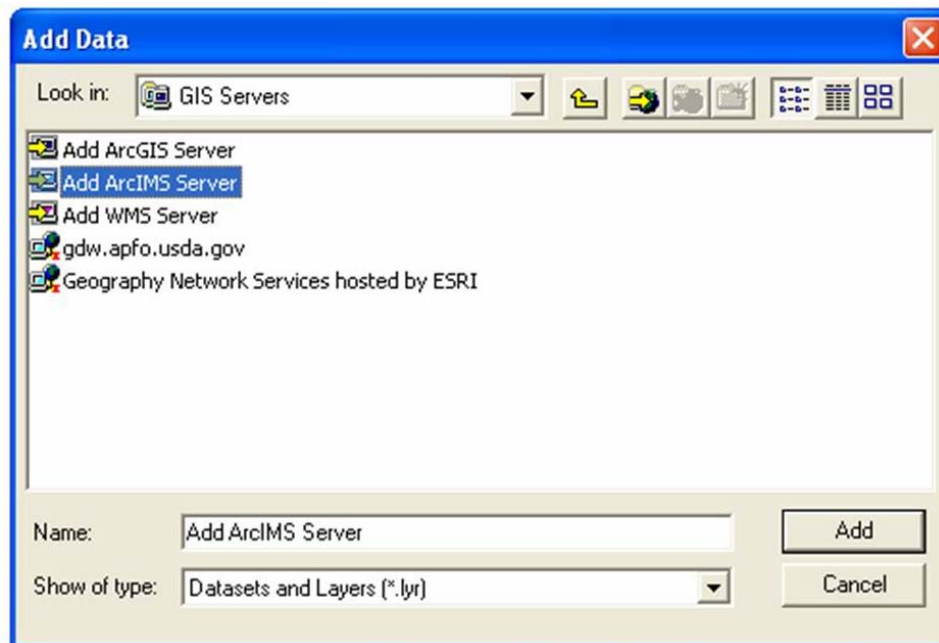


Adding an ArcIMS Web Service to ArcMap in ArcGIS 9.1

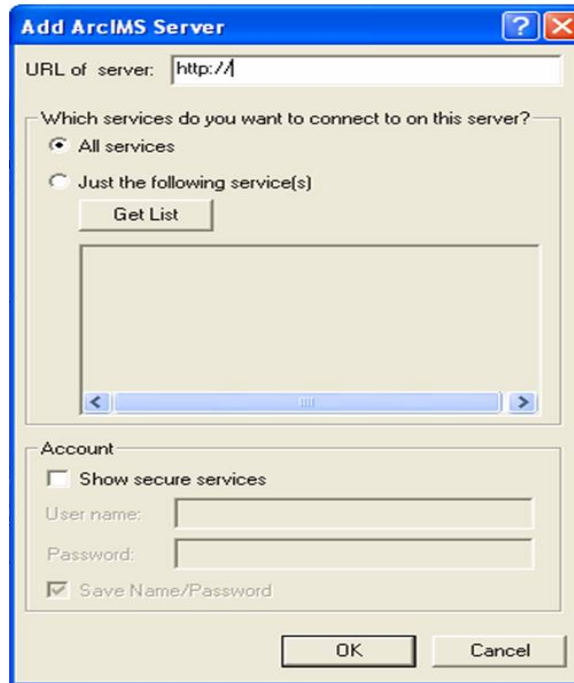
1. Open ArcMap
2. Click the 'Add Data' button.



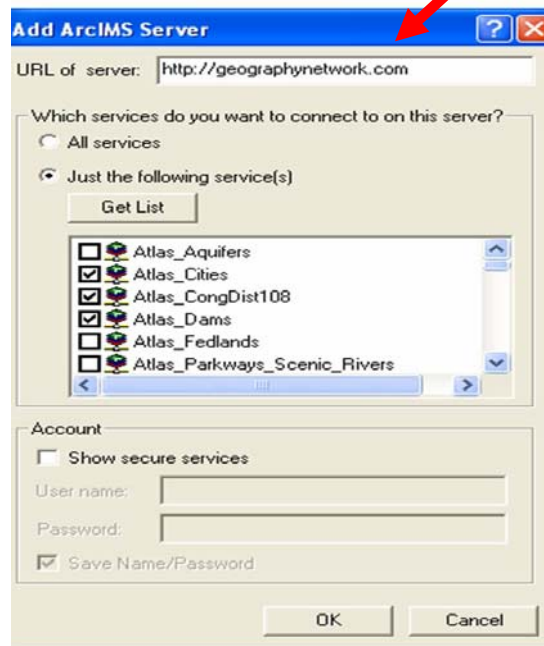
3. When the popup window appears, navigate to *GIS Servers* and double click *Add ArcIMS Server*; or single click *Add ArcIMS Server* and then click *Add*.



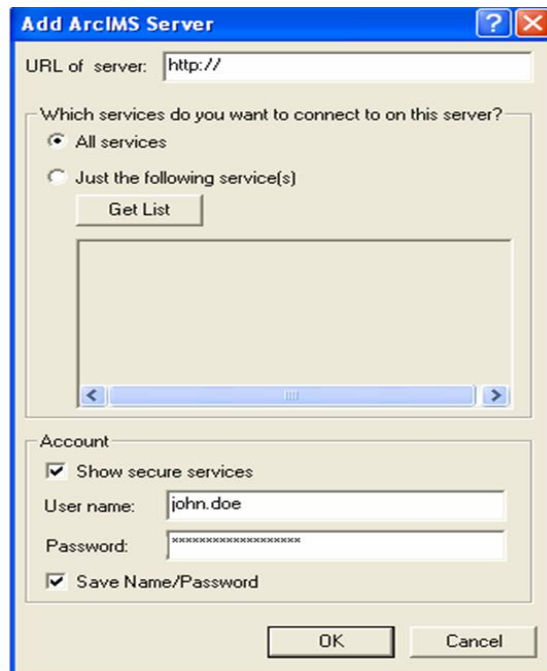
4. The *Add ArcIMS Server* window will appear. Under *URL of server*, type in the website address of the GDW ArcIMS Server:



http://gdw.apfo.usda.gov.



7. A secure service can be created by entering a valid *User name* and *Password* after checking the *Show secure services* box.



8. After the ArcIMS Web Service has been successfully added, add data to ArcMap from the Web Service by clicking the *Add Data* button, navigating to the *GIS Servers* icon, clicking on it, and selecting data from the GDW.

For additional information contact:

USDA-FSA

Aerial Photography Field Office

2222 West 2300 South

Salt Lake City, UT 84119-2020

801-844-2930

801-844-2934

www.apfo.usda.gov