

Adding GDW Data from the ArcGIS Server into ArcMap 9.1

- 1) Open ArcMap and Click the Add Data Button
- 2) Select GIS Servers and then Add ArcGIS Server
- 3) The Add ArcGIS Server Dialog will open.
 - 3a) Click the Internet Server radio button
 - 3b) In the Server: text box enter <http://gis.apfo.usda.gov/arcgis/services>
 - 3c) Make sure the All Resources radio button is checked
 - 3d) Click OK to save and close the Add ArcGIS Server dialog

Add ArcGIS Server

What ArcGIS server do you want to connect to?

Local Server Internet Server

Server:

Example:

Which ArcGIS server resources do you want to connect to?

All resources
 Just the following resource(s)

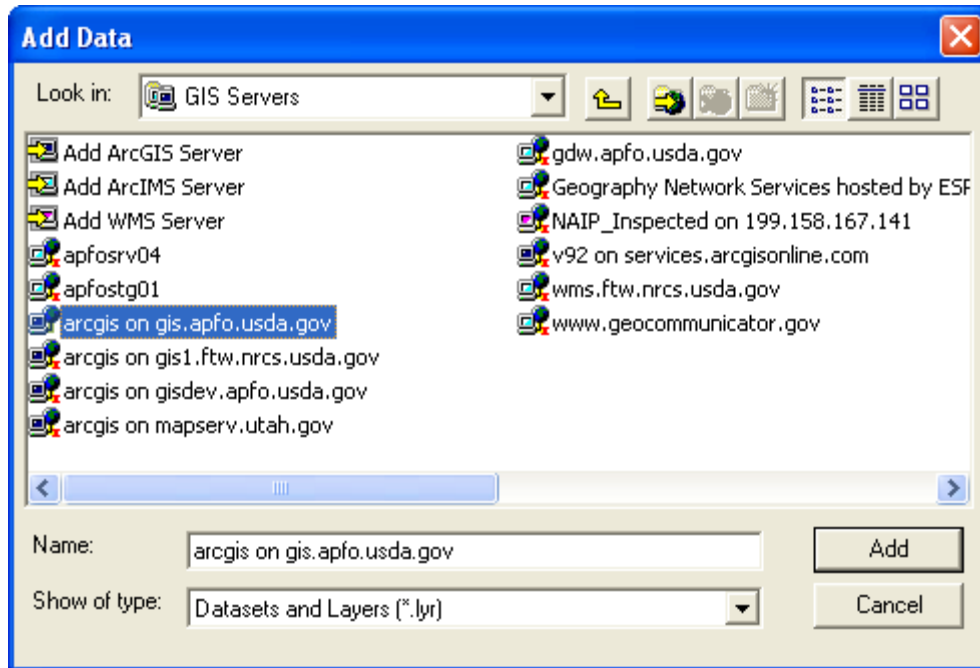
Account

User name:

Password:

Save Name/Password

4) A new Server has been added to the GIS Servers list. The new server is called: *arcgis on gis.apfo.usda.gov*. This is the new GDW imagery server for FY07 NAIP imagery. The data is organized by state.



5) Double Click the new ArcGIS Server connection to access the server.

6) Double Click the NAIP_2007 folder to see the FY07 state based imagery services.

