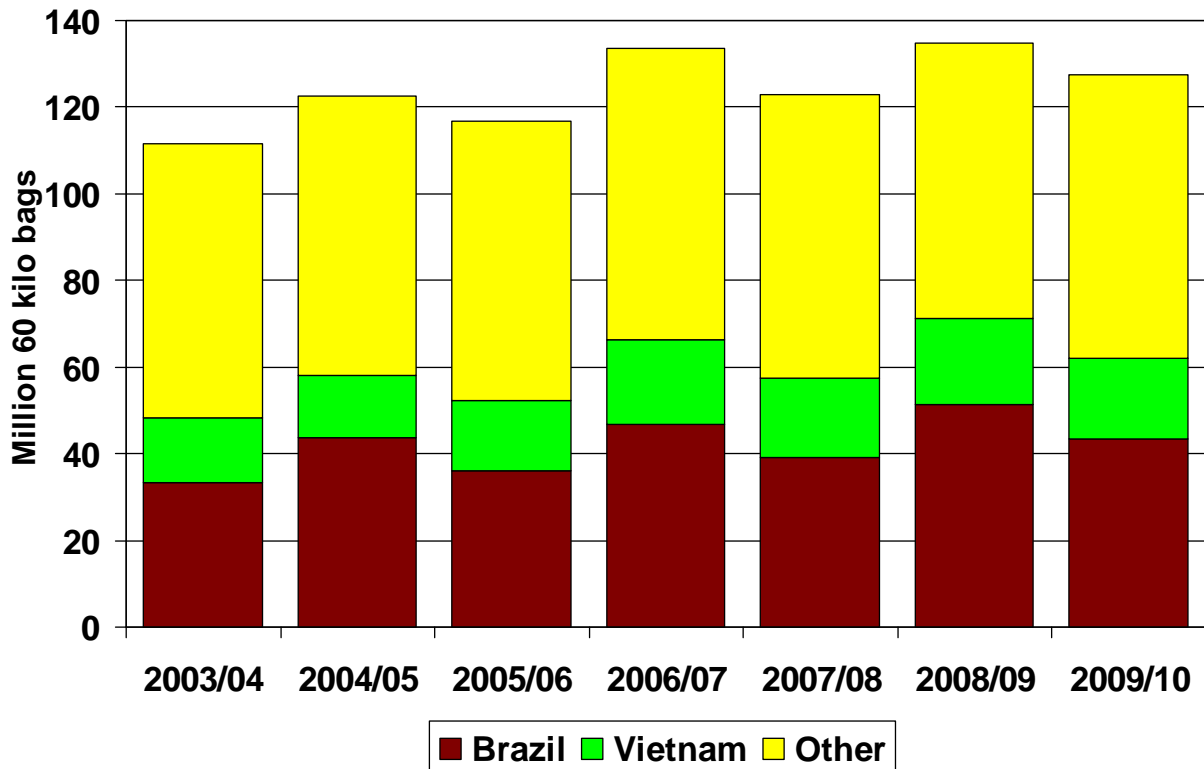




Coffee: World Markets and Trade

Brazil's Biennial Downturn Lowers World Coffee Production for 2009/10



Coffee: 2009/10 Forecast Overview

- **Coffee production forecast down from previous year's record**

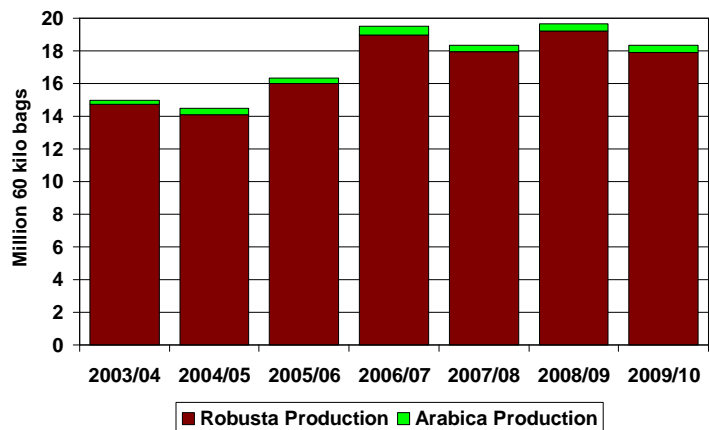
Coffee production for 2009/10 is forecast at 127.4 million bags (60 kilograms or 132.276 pounds), down 7.3 million from last year's record harvest of 134.8 million bags. The decline is attributed to Brazil's 8 million bag drop as it enters the off-cycle of Arabica production. Brazil and Vietnam are forecast to produce 43.5 million and 18.4 million bags, respectively, accounting for 49 percent of the world's coffee. Other top countries include Colombia, Indonesia and India and are forecast to produce 12.2 million, 7.6 million, and 4.9 million bags, respectively.

Brazil: Production is forecast to fall 8 million bags to total 43.5 million in 2009/10. Arabica production is forecast to drop 7 million bags to total 31.9 million due to the off-year of the biennial cycle of Arabica trees. Despite the loss, Arabica trees benefited from favorable weather during blossom, cherry setting, and fruit formation, thus offsetting below average crop

management due to higher fertilizer and labor costs. Robusta production is forecast to ease 1 million bags to total 11.6 million due to adverse weather in Espirito Santo during the blossoming period.

Vietnam: Production is forecast to slip 1.3 million bags to total 18.4 million in 2009/10. Torrential rains destroyed coffee blossoms in the largest growing areas (Dak Lak and Lam Dong province). Also, uneven flowering caused some beans to ripen before others. Labor costs are anticipated to be much higher than the previous crop. Growers are also complaining of poor soil quality and report that coffee trees are dying in some areas of Lam Dong.

Vietnam's Production Forecast Down 1.3 Million Bags Due Mainly to Adverse Weather



Colombia: Production is forecast to rise 1.7 million bags to total 12.2 million in 2009/10 on expectations of favorable growing conditions. The 2008/09 estimate is downwardly revised 1.8 million bags to total 10.5 million bags. Heavy rains damaged coffee tree blossoms, while soaring fertilizer costs forced growers to reduce applications.

India: Production is forecast up 500,000 bags to total 4.9 million in 2009/10 as a result of timely pre-blossom showers in March and follow-up precipitation. The 2008/09 estimate is downwardly revised 300,000 bags from the previous estimate to total 4.4 million bags. Damage from rains during the peak blossoming stage in March 2008 as well as the post-harvest season was more serious than anticipated.

- **Green coffee bean exports seen down on lower production**

Green coffee bean exports are forecast to total 91.7 million bags in 2009/10, down 2.3 million from the previous year.

Brazil: Exports are forecast to decline 2.3 million bags to total 25 million on reduced availability. Inventories will be reduced 50 percent to compensate for the production shortfall and satisfy export markets. Approximately 60 percent of exports are destined for the EU-27, with shipments to the United States and Japan accounting for 20 percent and 8 percent, respectively.

Vietnam: Exports are forecast to decline 800,000 bags to total 18 million due to lower production. Inventories will contract 20 percent on strong demand. Over 50 percent of exports are shipped to the EU-27, while exports to the United States and Japan account for 25 percent and 7 percent, respectively.

Colombia: Exports are forecast to grow 500,000 bags to total 10.6 million due to an anticipated rebound in production. The 2008/09 estimate is downwardly revised 500,000 bags to total 10.1 million as a result of production losses attributed to heavy rains.

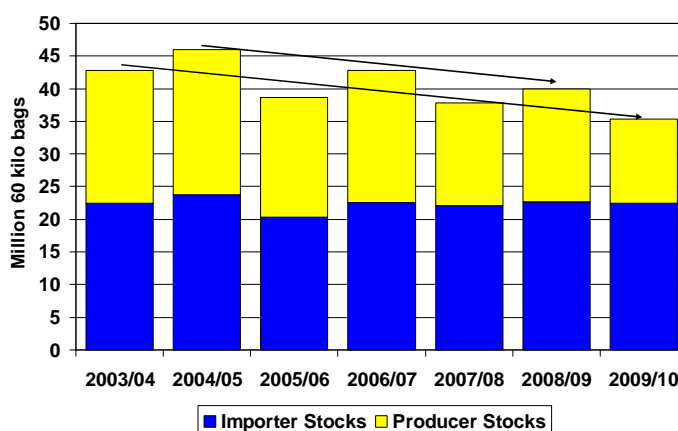
- **Green coffee bean imports**

Green coffee bean imports are forecast to total 86.4 million bags in 2009/10, down 1.4 million from the previous year. EU-27 imports will likely slow 800,000 bags to total 44.4 million after rebuilding inventories the previous year. U.S. imports are expected up 200,000 bags to total 21.7 million, with inventories remaining tight. Japan and Canada are expected to import 6.4 million, and 2 million bags, respectively. These import figures exclude roast, ground, and soluble coffee. Also, import figures for the EU-27 and Canada have been reduced by the amount that these countries export green coffee beans in order not to overstate world green coffee bean exports.

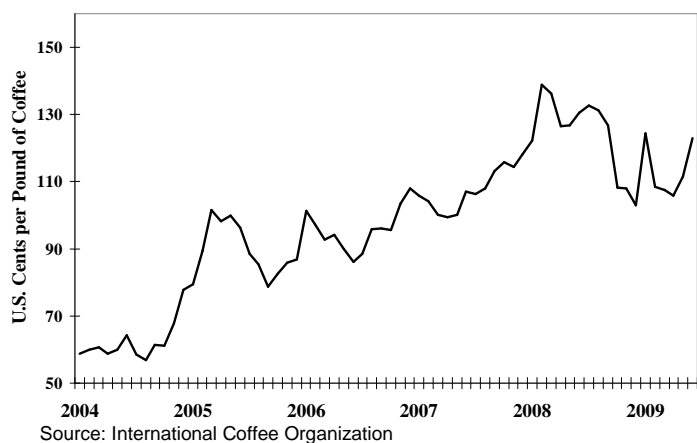
- **Ending stocks tighten as Brazil draws down inventories**

Ending stocks in producing and importing countries are forecast to contract 4.8 million bags to total 35.3 million. Importer stocks have been fairly steady, averaging 22 million bags over the last 7 years. In contrast, producer stocks have declined from 20 million bags in 2003/04 to 13 million forecast for 2009/10. Producer stocks have dwindled due primarily to Brazil's auctioning of government stocks, though the cyclical nature of the country's Arabica production also influences ending stocks.

Ending Stocks Trending Down in Pattern Dominated by Brazil's Biennial Coffee Cycle



ICO Composite Price Jump Since March 2009 Lifted by Colombian Prices



- **Rise in composite price tied to surge in Colombian price**

The International Coffee Organization's (ICO) composite price was up 16 percent between March and May 2009, primarily due to Colombian Mild prices surging 50 percent since February. Previously, prices had been trending down since March 2008, as hedge and index funds reduced their exposure to coffee in order to cover margin calls for other investments.

For further information, please contact Tony Halstead at 202-690-2313, or send an email to Tony.Halstead@fas.usda.gov

PSD Online

Users can find the release schedule and generate the full USDA Production, Supply and Distribution (PSD) dataset for reporting countries by accessing the following link:

<http://www.fas.usda.gov/psdonline/psdHome.aspx>

**Table 01 Green Coffee Bean Production 1/
Thousand 60-Kilogram bags 2/**

	2004/05	2005/06	2006/07	2007/08	2008/09	Jun 2009/10
Production						
Algeria	0	0	0	0	0	0
Angola	15	25	35	35	50	50
Argentina	0	0	0	0	0	0
Australia	0	0	0	0	0	0
Benin	nr	0	0	0	0	0
Bolivia	165	135	152	140	135	140
Brazil	43,600	36,100	46,700	39,100	51,450	43,500
Burundi	437	285	387	167	350	200
Cameroon	790	850	825	795	800	800
Canada	0	0	0	0	0	0
Central African Republic	45	46	78	65	60	60
China	0	0	0	0	0	0
Colombia	11,532	11,953	12,164	12,515	10,500	12,200
Congo (Brazzaville)	3	3	3	3	3	3
Congo (Kinshasa)	360	336	380	400	400	400
Costa Rica	1,907	1,751	1,782	1,867	1,622	1,730
Cote d'Ivoire	2,301	1,962	2,847	1,600	2,150	2,000
Croatia	0	0	0	0	0	0
Cuba	150	125	100	70	125	100
Dominican Republic	481	310	390	465	500	500
EU-27	0	0	0	0	0	0
Ecuador	733	784	805	702	637	625
El Salvador	1,329	1,387	1,300	1,515	1,380	1,520
Equatorial Guinea	0	0	0	0	0	0
Ethiopia	4,575	4,000	4,650	4,200	4,500	4,300
Gabon	nr	0	0	0	0	0
Ghana	17	21	28	30	25	25
Guatemala	3,817	3,605	4,050	3,980	3,700	3,800
Guinea	316	525	475	400	350	350
Guyana	2	0	0	0	0	0
Haiti	365	356	362	350	350	375
Honduras	2,575	3,204	3,500	3,802	3,600	4,000
India	4,672	4,617	4,800	4,665	4,375	4,900
Indonesia	8,450	9,450	8,050	7,500	7,600	7,600
Jamaica	21	34	41	20	40	30
Japan	0	0	0	0	0	0
Kenya	756	869	869	700	885	800
Korea, South	0	0	0	0	0	0
Laos	385	417	400	400	400	400
Liberia	68	71	53	50	50	40
Madagascar	522	599	587	580	580	580
Malawi	21	24	17	20	25	25
Malaysia	1,000	450	450	450	450	450
Mexico	3,900	4,000	4,200	4,500	4,450	4,500
Morocco	0	0	0	0	0	0
New Caledonia	0	0	0	0	0	0
Nicaragua	1,130	1,718	1,300	1,700	1,700	1,700
Nigeria	45	69	50	40	50	50
Norway	0	0	0	0	0	0
Panama	90	173	170	170	160	170
Papua New Guinea	998	1,333	842	1,013	885	835
Paraguay	26	45	20	28	25	25
Peru	3,550	2,420	4,550	3,950	4,026	3,900
Philippines	700	710	705	690	685	685
Russia	0	0	0	0	0	0
Rwanda	450	300	254	250	300	250
Serbia	0	0	0	0	0	0
Sierra Leone	15	60	30	40	20	25
South Africa	0	0	0	0	0	0
Sri Lanka	32	34	32	35	35	35
Switzerland	0	0	0	0	0	0
Tanzania	765	800	820	810	920	800
Thailand	884	1,000	750	600	600	600
Togo	166	140	134	135	130	130

Table 01 Green Coffee Bean Production 1/ (Continued)

Thousand 60-Kilogram bags 2/

	2004/05	2005/06	2006/07	2007/08	2008/09	Jun 2009/10
Trinidad and Tobago	15	15	11	15	15	15
Turkey	0	0	0	0	0	0
Uganda	2,593	2,159	2,500	2,500	2,700	2,500
United States	146	168	154	153	160	160
Venezuela	800	820	862	1,000	845	910
Vietnam	14,500	16,335	19,500	18,333	19,670	18,350
Yemen	171	189	200	200	200	200
Zambia	110	103	56	60	70	70
Zimbabwe	120	66	45	30	30	30
Total	122,616	116,951	133,465	122,838	134,768	127,443

nr equals zero

1/ Coffee marketing year begins October in some countries and April or July (e.g. Brazil) in others.

2/ One bag - 132.276 pounds.

Table 01A Arabica Coffee Production

Thousand 60-kilogram bags 1/

	2004/05	2005/06	2006/07	2007/08	2008/09	Jun 2009/10
Arabica Production						
Algeria	0	0	0	0	0	0
Angola	0	0	0	0	0	0
Argentina	0	0	0	0	0	0
Australia	0	0	0	0	0	0
Benin	nr	0	0	0	0	0
Bolivia	165	135	152	140	135	140
Brazil	34,300	26,000	36,000	27,650	38,850	31,900
Burundi	437	285	387	167	350	200
Cameroon	90	93	90	90	90	90
Canada	0	0	0	0	0	0
Central African Republic	0	0	0	0	0	0
China	0	0	0	0	0	0
Colombia	11,532	11,953	12,164	12,515	10,500	12,200
Congo (Brazzaville)	0	0	0	0	0	0
Congo (Kinshasa)	58	54	200	212	212	210
Costa Rica	1,907	1,751	1,782	1,867	1,622	1,730
Cote d'Ivoire	0	0	0	0	0	0
Croatia	0	0	0	0	0	0
Cuba	150	125	100	70	125	100
Dominican Republic	481	310	390	465	500	500
EU-27	0	0	0	0	0	0
Ecuador	398	439	450	419	379	371
El Salvador	1,329	1,387	1,300	1,515	1,380	1,520
Equatorial Guinea	0	0	0	0	0	0
Ethiopia	4,575	4,000	4,650	4,200	4,500	4,300
Gabon	nr	0	0	0	0	0
Ghana	0	0	0	0	0	0
Guatemala	3,802	3,590	4,040	3,970	3,690	3,790
Guinea	0	0	0	0	0	0
Guyana	2	0	0	0	0	0
Haiti	365	356	362	350	350	375
Honduras	2,575	3,204	3,500	3,802	3,600	4,000
India	1,963	1,594	1,662	1,583	1,325	1,500
Indonesia	950	1,050	1,050	1,000	1,000	1,000
Jamaica	21	34	41	20	40	30
Japan	0	0	0	0	0	0
Kenya	754	867	867	699	884	799
Korea, South	0	0	0	0	0	0
Laos	0	0	0	0	0	0
Liberia	0	0	0	0	0	0
Madagascar	25	37	35	30	30	30
Malawi	21	24	17	20	25	25
Malaysia	0	0	0	0	0	0
Mexico	3,800	3,800	4,000	4,250	4,200	4,250
Morocco	0	0	0	0	0	0
New Caledonia	0	0	0	0	0	0
Nicaragua	1,130	1,718	1,300	1,700	1,700	1,700
Nigeria	0	0	0	0	0	0
Norway	0	0	0	0	0	0
Panama	90	173	170	170	160	170
Papua New Guinea	948	1,270	810	970	850	800
Paraguay	26	45	20	28	25	25
Peru	3,550	2,420	4,550	3,950	4,026	3,900
Philippines	35	35	35	35	35	35
Russia	0	0	0	0	0	0
Rwanda	450	300	254	250	300	250
Serbia	0	0	0	0	0	0
Sierra Leone	0	0	0	0	0	0
South Africa	0	0	0	0	0	0
Sri Lanka	10	10	9	10	10	10
Switzerland	0	0	0	0	0	0
Tanzania	480	500	515	505	580	500
Thailand	0	0	0	0	0	0
Togo	0	0	0	0	0	0

Table 01A Arabica Coffee Production (Continued)

Thousand 60-kilogram bags 1/

	2004/05	2005/06	2006/07	2007/08	2008/09	Jun 2009/10
Trinidad and Tobago	1	1	1	1	1	1
Turkey	0	0	0	0	0	0
Uganda	493	475	400	400	400	400
United States	146	168	154	153	160	160
Venezuela	800	820	862	1,000	845	910
Vietnam	383	335	500	400	470	450
Yemen	171	189	200	200	200	200
Zambia	110	103	56	60	70	70
Zimbabwe	120	66	45	30	30	30
Total	78,643	69,716	83,120	74,896	83,649	78,671

nr equals zero

1/ Coffee marketing year begins October in some countries and April or July (e.g. Brazil) in others.

2/ One bag - 132.276 pounds.

Table 01B Robusta Coffee Production

Thousand 60-kilogram bags 1/

	2004/05	2005/06	2006/07	2007/08	2008/09	Jun 2009/10
Robusta Production						
Algeria	0	0	0	0	0	0
Angola	15	25	35	35	50	50
Argentina	0	0	0	0	0	0
Australia	0	0	0	0	0	0
Benin	nr	0	0	0	0	0
Bolivia	0	0	0	0	0	0
Brazil	9,300	10,100	10,700	11,450	12,600	11,600
Burundi	0	0	0	0	0	0
Cameroon	700	757	735	705	710	710
Canada	0	0	0	0	0	0
Central African Republic	45	46	78	65	60	60
China	0	0	0	0	0	0
Colombia	0	0	0	0	0	0
Congo (Brazzaville)	3	3	3	3	3	3
Congo (Kinshasa)	302	282	180	188	188	190
Costa Rica	0	0	0	0	0	0
Cote d'Ivoire	2,301	1,962	2,847	1,600	2,150	2,000
Croatia	0	0	0	0	0	0
Cuba	0	0	0	0	0	0
Dominican Republic	0	0	0	0	0	0
EU-27	0	0	0	0	0	0
Ecuador	335	345	355	283	258	254
El Salvador	0	0	0	0	0	0
Equatorial Guinea	0	0	0	0	0	0
Ethiopia	0	0	0	0	0	0
Gabon	nr	0	0	0	0	0
Ghana	17	21	28	30	25	25
Guatemala	15	15	10	10	10	10
Guinea	316	525	475	400	350	350
Guyana	0	0	0	0	0	0
Haiti	0	0	0	0	0	0
Honduras	0	0	0	0	0	0
India	2,709	3,023	3,138	3,082	3,050	3,400
Indonesia	7,500	8,400	7,000	6,500	6,600	6,600
Jamaica	0	0	0	0	0	0
Japan	0	0	0	0	0	0
Kenya	2	2	2	1	1	1
Korea, South	0	0	0	0	0	0
Laos	385	417	400	400	400	400
Liberia	68	71	53	50	50	40
Madagascar	497	562	552	550	550	550
Malawi	0	0	0	0	0	0
Malaysia	1,000	450	450	450	450	450
Mexico	100	200	200	250	250	250
Morocco	0	0	0	0	0	0
New Caledonia	0	0	0	0	0	0
Nicaragua	0	0	0	0	0	0
Nigeria	45	69	50	40	50	50
Norway	0	0	0	0	0	0
Panama	0	0	0	0	0	0
Papua New Guinea	50	63	32	43	35	35
Paraguay	0	0	0	0	0	0
Peru	0	0	0	0	0	0
Philippines	640	650	645	630	625	625
Russia	0	0	0	0	0	0
Rwanda	0	0	0	0	0	0
Serbia	0	0	0	0	0	0
Sierra Leone	15	60	30	40	20	25
South Africa	0	0	0	0	0	0
Sri Lanka	22	24	23	25	25	25
Switzerland	0	0	0	0	0	0
Tanzania	285	300	305	305	340	300
Thailand	884	1,000	750	600	600	600
Togo	166	140	134	135	130	130

Table 01B Robusta Coffee Production (Continued)

Thousand 60-kilogram bags 1/

	2004/05	2005/06	2006/07	2007/08	2008/09	Jun 2009/10
Trinidad and Tobago	14	14	10	14	14	14
Turkey	0	0	0	0	0	0
Uganda	2,100	1,684	2,100	2,100	2,300	2,100
United States	0	0	0	0	0	0
Venezuela	0	0	0	0	0	0
Vietnam	14,117	16,000	19,000	17,933	19,200	17,900
Yemen	0	0	0	0	0	0
Zambia	0	0	0	0	0	0
Zimbabwe	0	0	0	0	0	0
Total	43,948	47,210	50,320	47,917	51,094	48,747

nr equals zero

1/ Coffee marketing year begins October in some countries and April or July (e.g. Brazil) in others.

2/ One bag - 132.276 pounds.

**Table 02 Green Coffee Bean Exports 1/
Thousand kilogram bags 2/**

	2004/05	2005/06	2006/07	2007/08	2008/09	Jun 2009/10
Bean Exports						
Algeria	0	0	0	0	0	0
Angola	5	5	5	6	8	8
Argentina	0	0	0	0	0	0
Australia	0	0	0	0	0	0
Benin	nr	0	0	0	0	0
Bolivia	114	76	85	80	75	80
Brazil	24,505	21,264	26,185	23,770	27,300	25,000
Burundi	475	350	400	240	300	300
Cameroon	658	850	760	550	650	600
Canada	0	0	0	0	0	0
Central African Republic	42	75	70	45	50	50
China	0	0	0	0	0	0
Colombia	10,352	10,042	10,507	10,656	10,100	10,600
Congo (Brazzaville)	0	0	0	0	0	0
Congo (Kinshasa)	169	300	175	215	175	175
Costa Rica	1,542	1,388	1,582	1,588	1,300	1,400
Cote d'Ivoire	2,065	1,710	1,590	1,525	1,600	1,500
Croatia	0	0	0	0	0	0
Cuba	33	15	18	5	10	10
Dominican Republic	45	75	85	80	100	100
EU-27	0	0	0	0	0	0
Ecuador	230	278	285	162	179	175
El Salvador	1,309	1,275	1,215	1,465	1,295	1,450
Equatorial Guinea	0	0	0	0	0	0
Ethiopia	2,625	2,550	2,400	2,300	2,400	2,400
Gabon	nr	0	0	0	0	0
Ghana	11	17	30	30	20	25
Guatemala	3,451	3,325	3,700	3,820	3,400	3,500
Guinea	266	375	400	370	350	350
Guyana	2	0	0	0	0	0
Haiti	17	24	21	19	20	20
Honduras	2,450	2,978	3,246	3,395	3,200	3,600
India	2,367	3,271	2,598	2,615	2,460	2,900
Indonesia	6,400	7,700	6,000	5,400	5,500	5,600
Jamaica	21	20	22	24	25	20
Japan	0	0	0	0	0	0
Kenya	670	631	748	660	860	800
Korea, South	0	0	0	0	0	0
Laos	235	250	260	220	250	225
Liberia	63	66	49	41	50	40
Madagascar	85	123	131	210	200	200
Malawi	20	21	17	20	20	25
Malaysia	7	27	21	20	22	20
Mexico	1,907	2,400	2,500	2,420	2,400	2,400
Morocco	0	0	0	0	0	0
New Caledonia	0	0	0	0	0	0
Nicaragua	985	1,369	1,130	1,610	1,500	1,500
Nigeria	5	29	5	5	5	5
Norway	0	0	0	0	0	0
Panama	81	83	110	100	100	100
Papua New Guinea	1,010	1,200	780	970	1,050	900
Paraguay	10	23	10	14	5	10
Peru	3,306	2,225	4,430	3,840	3,750	3,800
Philippines	4	4	2	2	2	2
Russia	0	0	0	0	0	0
Rwanda	458	250	280	250	300	250
Serbia	0	0	0	0	0	0
Sierra Leone	17	50	35	40	20	25
South Africa	0	0	0	0	0	0
Sri Lanka	3	5	3	2	2	0
Switzerland	0	0	0	0	0	0
Tanzania	715	740	750	760	850	750
Thailand	340	540	315	150	200	150
Togo	175	130	134	135	130	130

Table 02 Green Coffee Bean Exports 1/ (Continued)

Thousand kilogram bags 2/

	2004/05	2005/06	2006/07	2007/08	2008/09	Jun 2009/10
Trinidad and Tobago	0	0	0	0	0	0
Turkey	0	0	0	0	0	0
Uganda	2,489	2,002	2,300	2,300	2,700	2,400
United States	0	0	0	0	0	0
Venezuela	5	70	85	200	200	0
Vietnam	14,200	15,600	18,700	15,700	18,800	18,000
Yemen	36	30	30	30	30	30
Zambia	109	102	55	59	70	70
Zimbabwe	116	62	51	30	30	30
Total	86,205	85,995	94,310	88,148	94,063	91,725

nr equals zero

1/ Coffee marketing year begins October in some countries and April or July (e.g. Brazil) in others.

2/ One bag - 132.276 pounds.

For Canada and the EU-27, green coffee bean exports appear as zero and the amount has been subtracted from green coffee bean imports to show net imports.

**Table 03 Green Coffee Bean Imports 1/
Thousand kilogram bags 2/**

	2004/05	2005/06	2006/07	2007/08	2008/09	Jun 2009/10
Bean Imports						
Algeria	1,900	2,100	1,825	1,500	1,800	1,500
Angola	0	0	0	0	0	0
Argentina	500	490	510	490	510	500
Australia	800	850	900	920	890	900
Benin	nr	0	0	0	0	0
Bolivia	0	0	0	0	0	0
Brazil	0	0	0	0	0	0
Burundi	0	0	0	0	0	0
Cameroon	0	0	0	0	0	0
Canada	2,140	1,960	1,950	1,940	1,900	1,950
Central African Republic	0	0	0	0	0	0
China	235	275	300	300	300	300
Colombia	0	0	0	0	0	0
Congo (Brazzaville)	0	0	0	0	0	0
Congo (Kinshasa)	0	0	0	0	0	0
Costa Rica	0	0	0	0	0	0
Cote d'Ivoire	0	0	0	0	0	0
Croatia	320	330	330	325	310	300
Cuba	0	0	0	0	0	0
Dominican Republic	0	0	0	0	0	0
EU-27	40,950	41,775	44,325	43,550	45,175	44,375
Ecuador	1	126	130	210	310	300
El Salvador	28	30	31	1	3	2
Equatorial Guinea	0	0	0	0	0	0
Ethiopia	0	0	0	0	0	0
Gabon	nr	0	0	0	0	0
Ghana	0	0	0	0	0	0
Guatemala	0	0	0	0	0	0
Guinea	0	0	0	0	0	0
Guyana	0	0	0	0	0	0
Haiti	0	0	0	0	0	0
Honduras	0	0	0	0	0	0
India	688	366	334	330	200	200
Indonesia	60	30	430	470	400	350
Jamaica	0	0	0	0	0	0
Japan	6,600	6,400	6,200	6,150	6,500	6,400
Kenya	0	0	0	0	0	0
Korea, South	1,400	1,425	1,400	1,550	1,590	1,550
Laos	0	0	0	0	0	0
Liberia	0	0	0	0	0	0
Madagascar	0	0	0	0	0	0
Malawi	0	0	0	0	0	0
Malaysia	402	503	730	622	650	650
Mexico	145	10	21	15	15	20
Morocco	470	525	560	570	570	550
New Caledonia	0	0	0	0	0	0
Nicaragua	0	0	0	0	0	0
Nigeria	0	0	0	0	0	0
Norway	650	560	650	590	640	625
Panama	0	0	0	0	0	0
Papua New Guinea	0	0	0	0	0	0
Paraguay	0	0	0	0	0	0
Peru	0	0	0	0	0	0
Philippines	330	350	292	382	270	250
Russia	480	700	960	970	1,050	900
Rwanda	0	0	0	0	0	0
Serbia	670	575	590	590	610	600
Sierra Leone	0	0	0	0	0	0
South Africa	395	430	430	410	370	360
Sri Lanka	0	0	0	0	0	0
Switzerland	1,550	1,275	1,490	1,710	1,750	1,700
Tanzania	0	0	0	0	0	0
Thailand	0	0	5	200	100	100
Togo	0	0	0	0	0	0

Table 03 Green Coffee Bean Imports 1/ (Continued)**Thousand kilogram bags 2/**

	2004/05	2005/06	2006/07	2007/08	2008/09	Jun 2009/10
Trinidad and Tobago	0	0	0	0	0	0
Turkey	200	185	225	220	225	200
Uganda	0	0	0	0	0	0
United States	20,480	20,830	22,110	21,775	21,500	21,700
Venezuela	0	10	0	0	0	0
Vietnam	0	50	79	65	70	75
Yemen	0	0	0	0	0	0
Zambia	0	0	0	0	0	0
Zimbabwe	0	0	0	0	0	0
Total	81,394	82,160	86,807	85,855	87,708	86,357

nr equals zero

1/ Coffee marketing year begins October in some countries and April or July (e.g. Brazil) in others. Coffee marketing year for non-producing countries begins in October. Please note the inclusion of data for non-producing countries is limited to imports of green coffee beans. Roasted and soluble coffee import data as well as green, roasted, and soluble export data have been excluded for non-producing countries.

2/ One bag - 132.276 pounds.

Imports for Canada and the EU-27 are net imports after subtracting green coffee exports.

**Table 04 Green Coffee Bean Ending Stocks 1/
Thousand 60-Kilogram bags 2/**

	2004/05	2005/06	2006/07	2007/08	2008/09	Jun 2009/10
Ending Stocks						
Algeria	0	0	0	0	0	0
Angola	35	40	40	39	39	40
Argentina	0	0	0	0	0	0
Australia	0	0	0	0	0	0
Benin	nr	0	0	0	0	0
Bolivia	161	160	167	167	167	167
Brazil	11,999	7,641	8,361	2,781	6,011	2,941
Burundi	400	333	318	243	291	191
Cameroon	83	14	35	211	286	411
Canada	0	0	0	0	0	0
Central African Republic	238	184	167	162	147	127
China	0	0	0	0	0	0
Colombia	931	1,215	1,302	1,411	461	441
Congo (Brazzaville)	0	0	0	0	0	0
Congo (Kinshasa)	195	29	49	49	49	49
Costa Rica	200	200	77	76	77	77
Cote d'Ivoire	508	192	931	432	417	357
Croatia	0	0	0	0	0	0
Cuba	30	15	0	0	0	0
Dominican Republic	200	280	120	50	50	50
EU-27	15,200	12,300	14,460	14,175	15,350	15,225
Ecuador	3	10	14	8	8	9
El Salvador	2	45	31	18	37	39
Equatorial Guinea	0	0	0	0	0	0
Ethiopia	875	625	1,000	900	900	600
Gabon	nr	0	0	0	0	0
Ghana	8	10	7	5	8	8
Guatemala	36	25	125	10	18	16
Guinea	86	186	221	211	171	131
Guyana	0	0	0	0	0	0
Haiti	171	163	164	155	145	160
Honduras	100	63	88	235	367	494
India	1,734	1,812	2,228	1,985	1,773	1,443
Indonesia	288	88	48	158	183	153
Jamaica	8	13	22	8	13	13
Japan	2,450	2,450	2,160	1,960	1,860	1,800
Kenya	316	534	635	659	665	646
Korea, South	0	0	0	0	0	0
Laos	0	0	0	0	0	0
Liberia	0	0	0	0	0	0
Madagascar	405	548	604	524	454	384
Malawi	1	3	2	1	5	4
Malaysia	0	0	0	0	0	0
Mexico	566	700	390	270	136	56
Morocco	0	0	0	0	0	0
New Caledonia	0	0	0	0	0	0
Nicaragua	21	225	186	81	86	91
Nigeria	38	28	23	8	3	3
Norway	125	125	125	125	125	125
Panama	14	44	29	34	29	34
Papua New Guinea	370	502	562	603	436	369
Paraguay	109	111	91	75	55	30
Peru	39	24	24	16	172	152
Philippines	213	214	139	140	145	69
Russia	0	0	0	0	0	0
Rwanda	85	135	109	109	109	109
Serbia	0	0	0	0	0	0
Sierra Leone	23	28	18	13	8	8
South Africa	0	0	0	0	0	0
Sri Lanka	20	19	18	16	14	14
Switzerland	200	200	200	200	200	200
Tanzania	213	216	229	219	218	213
Thailand	132	82	12	102	42	92
Togo	29	37	35	33	33	33

Table 04 Green Coffee Bean Ending Stocks 1/ (Continued)

Thousand 60-Kilogram bags 2/

	2004/05	2005/06	2006/07	2007/08	2008/09	Jun 2009/10
Trinidad and Tobago	0	0	0	0	0	0
Turkey	0	0	0	0	0	0
Uganda	89	146	271	411	311	311
United States	5,700	5,200	5,700	5,600	5,200	5,060
Venezuela	538	526	483	414	155	286
Vietnam	782	834	791	2,604	2,611	2,039
Yemen	0	0	0	0	0	0
Zambia	0	0	0	0	0	0
Zimbabwe	37	37	27	23	23	23
Total	46,006	38,611	42,838	37,729	40,063	35,293

nr equals zero

1/ Coffee marketing year begins October in some countries and April or July (e.g. Brazil) in others. Coffee marketing year for non-producing countries begins in October. Please note that the inclusion of data for non-producing countries is limited to imports of green coffee beans. Roasted and soluble coffee import data as well as green, roasted, and soluble export data have been excluded for non-producing countries.

2/ One bag - 132.276 pounds.

Table 05 World Coffee Supply and Distribution, 2009/10
 Thousand 60-kilogram bags 1/

Country	Beginning Stocks	Total Production	Bean Imports	Domestic Use	Bean Exports	Ending Stocks	Exportable Production
Caribbean							
Cuba	0	100	0	90	10	0	10
Dominican Republic	50	500	0	400	100	50	100
Haiti	145	375	0	340	20	160	35
Jamaica	13	30	0	10	20	13	20
Trinidad and Tobago	0	15	0	15	0	0	0
Total Caribbean	208	1,020	0	855	150	223	165
Central America							
Costa Rica	77	1,730	0	330	1,400	77	1,400
El Salvador	37	1,520	2	227	1,450	39	1,293
Guatemala	18	3,800	0	335	3,500	16	3,465
Honduras	367	4,000	0	249	3,600	494	3,751
Nicaragua	86	1,700	0	165	1,500	91	1,535
Panama	29	170	0	65	100	34	105
Total Central America	614	12,920	2	1,371	11,550	751	11,549
East Asia							
China	0	0	300	300	0	0	0
Japan	1,860	0	6,400	6,460	0	1,800	0
Korea, South	0	0	1,550	1,550	0	0	0
Total East Asia	1,860	0	8,250	8,310	0	1,800	0
European Union							
EU-27	15,350	0	44,375	44,500	0	15,225	0
Total European Union	15,350	0	44,375	44,500	0	15,225	0
Former Soviet Union - 12							
Russia	0	0	900	900	0	0	0
Total Former Soviet Union - 12	0	0	900	900	0	0	0
Middle East							
Turkey	0	0	200	200	0	0	0
Yemen	0	200	0	170	30	0	30
Total Middle East	0	200	200	370	30	0	30
North Africa							
Algeria	0	0	1,500	1,500	0	0	0
Morocco	0	0	550	550	0	0	0
Total North Africa	0	0	2,050	2,050	0	0	0
North America							
Canada	0	0	1,950	1,950	0	0	0
Mexico	136	4,500	20	2,200	2,400	56	2,300
United States	5,200	160	21,700	22,000	0	5,060	0
Total North America	5,336	4,660	23,670	26,150	2,400	5,116	2,300
Oceania							
Australia	0	0	900	900	0	0	0
New Caledonia	0	0	0	0	0	0	0
Papua New Guinea	436	835	0	2	900	369	833
Total Oceania	436	835	900	902	900	369	833
Croatia	0	0	300	300	0	0	0
Norway	125	0	625	625	0	125	0
Serbia	0	0	600	600	0	0	0

Table 05 World Coffee Supply and Distribution, 2009/10 (Continued)

Thousand 60-kilogram bags 1/

Country	Beginning Stocks	Total Production	Bean Imports	Domestic Use	Bean Exports	Ending Stocks	Exportable Production
Switzerland	200	0	1,700	1,700	0	200	0
Total Other Europe	325	0	3,225	3,225	0	325	0
South America							
Argentina	0	0	500	500	0	0	0
Bolivia	167	140	0	60	80	167	80
Brazil	6,011	43,500	0	18,470	25,000	2,941	25,030
Colombia	461	12,200	0	1,250	10,600	441	10,950
Ecuador	8	625	300	109	175	9	516
Guyana	0	0	0	0	0	0	0
Paraguay	55	25	0	40	10	30	0
Peru	172	3,900	0	120	3,800	152	3,780
Venezuela	155	910	0	870	0	286	40
Total South America	7,029	61,300	800	21,419	39,665	4,026	40,396
South Asia							
India	1,773	4,900	200	1,620	2,900	1,443	3,280
Sri Lanka	14	35	0	35	0	14	0
Total South Asia	1,787	4,935	200	1,655	2,900	1,457	3,280
Southeast Asia							
Indonesia	183	7,600	350	2,350	5,600	153	5,250
Laos	0	400	0	175	225	0	225
Malaysia	0	450	650	350	20	0	100
Philippines	145	685	250	1,025	2	69	0
Thailand	42	600	100	500	150	92	100
Vietnam	2,611	18,350	75	995	18,000	2,039	17,355
Total Southeast Asia	2,981	28,085	1,425	5,395	23,997	2,353	23,030
Sub-Saharan Africa							
Angola	39	50	0	41	8	40	9
Benin	0	0	0	0	0	0	0
Burundi	291	200	0	0	300	191	200
Cameroon	286	800	0	75	600	411	725
Central African Republic	147	60	0	30	50	127	30
Congo (Brazzaville)	0	3	0	3	0	0	0
Congo (Kinshasa)	49	400	0	225	175	49	175
Cote d'Ivoire	417	2,000	0	310	1,500	357	1,690
Equatorial Guinea	0	0	0	0	0	0	0
Ethiopia	900	4,300	0	2,200	2,400	600	2,100
Gabon	0	0	0	0	0	0	0
Ghana	8	25	0	0	25	8	25
Guinea	171	350	0	40	350	131	310
Kenya	665	800	0	22	800	646	778
Liberia	0	40	0	0	40	0	40
Madagascar	454	580	0	450	200	384	130
Malawi	5	25	0	1	25	4	24
Nigeria	3	50	0	45	5	3	5
Rwanda	109	250	0	0	250	109	250
Sierra Leone	8	25	0	0	25	8	25
South Africa	0	0	360	360	0	0	0
Tanzania	218	800	0	55	750	213	745
Togo	33	130	0	0	130	33	130
Uganda	311	2,500	0	100	2,400	311	2,400
Zambia	0	70	0	0	70	0	70

Table 05 World Coffee Supply and Distribution, 2009/10 (Continued)
Thousand 60-kilogram bags 1/

Country	Beginning Stocks	Total Production	Bean Imports	Domestic Use	Bean Exports	Ending Stocks	Exportable Production
Zimbabwe	23	30	0	0	30	23	30
Total Sub-Saharan Africa	4,137	13,488	360	3,957	10,133	3,648	9,891
World							
World	40,063	127,443	86,357	121,059	91,725	35,293	91,474

1/ One bag - 132.276 pounds.

Table 05 World Coffee Supply and Distribution, 2008/09
Thousand 60-kilogram bags 1/

Country	Beginning Stocks	Total Production	Bean Imports	Domestic Use	Bean Exports	Ending Stocks	Exportable Production
Caribbean							
Cuba	0	125	0	115	10	0	10
Dominican Republic	50	500	0	400	100	50	100
Haiti	155	350	0	340	20	145	10
Jamaica	8	40	0	10	25	13	30
Trinidad and Tobago	0	15	0	15	0	0	0
Total Caribbean	213	1,030	0	880	155	208	150
Central America							
Costa Rica	76	1,622	0	321	1,300	77	1,301
El Salvador	18	1,380	3	230	1,295	37	1,150
Guatemala	10	3,700	0	335	3,400	18	3,365
Honduras	235	3,600	0	249	3,200	367	3,351
Nicaragua	81	1,700	0	165	1,500	86	1,535
Panama	34	160	0	65	100	29	95
Total Central America	454	12,162	3	1,365	10,795	614	10,797
East Asia							
China	0	0	300	300	0	0	0
Japan	1,960	0	6,500	6,600	0	1,860	0
Korea, South	0	0	1,590	1,590	0	0	0
Total East Asia	1,960	0	8,390	8,490	0	1,860	0
European Union							
EU-27	14,175	0	45,175	44,000	0	15,350	0
Total European Union	14,175	0	45,175	44,000	0	15,350	0
Former Soviet Union - 12							
Russia	0	0	1,050	1,050	0	0	0
Total Former Soviet Union - 12	0	0	1,050	1,050	0	0	0
Middle East							
Turkey	0	0	225	225	0	0	0
Yemen	0	200	0	170	30	0	30
Total Middle East	0	200	225	395	30	0	30
North Africa							
Algeria	0	0	1,800	1,800	0	0	0
Morocco	0	0	570	570	0	0	0
Total North Africa	0	0	2,370	2,370	0	0	0
North America							
Canada	0	0	1,900	1,900	0	0	0
Mexico	270	4,450	15	2,200	2,400	136	2,250
United States	5,600	160	21,500	22,060	0	5,200	0
Total North America	5,870	4,610	23,415	26,160	2,400	5,336	2,250
Oceania							
Australia	0	0	890	890	0	0	0
New Caledonia	0	0	0	0	0	0	0
Papua New Guinea	603	885	0	2	1,050	436	883
Total Oceania	603	885	890	892	1,050	436	883
Croatia	0	0	310	310	0	0	0
Norway	125	0	640	640	0	125	0
Serbia	0	0	610	610	0	0	0

Table 05 World Coffee Supply and Distribution, 2008/09 (Continued)

Thousand 60-kilogram bags 1/

Country	Beginning Stocks	Total Production	Bean Imports	Domestic Use	Bean Exports	Ending Stocks	Exportable Production
Switzerland	200	0	1,750	1,750	0	200	0
Total Other Europe	325	0	3,310	3,310	0	325	0
South America							
Argentina	0	0	510	510	0	0	0
Bolivia	167	135	0	60	75	167	75
Brazil	2,781	51,450	0	17,940	27,300	6,011	33,510
Colombia	1,411	10,500	0	1,250	10,100	461	9,250
Ecuador	8	637	310	163	179	8	474
Guyana	0	0	0	0	0	0	0
Paraguay	75	25	0	40	5	55	0
Peru	16	4,026	0	120	3,750	172	3,906
Venezuela	414	845	0	860	200	155	0
Total South America	4,872	67,618	820	20,943	41,609	7,029	47,215
South Asia							
India	1,985	4,375	200	1,620	2,460	1,773	2,755
Sri Lanka	16	35	0	35	2	14	0
Total South Asia	2,001	4,410	200	1,655	2,462	1,787	2,755
Southeast Asia							
Indonesia	158	7,600	400	2,445	5,500	183	5,155
Laos	0	400	0	150	250	0	250
Malaysia	0	450	650	346	22	0	104
Philippines	140	685	270	1,065	2	145	0
Thailand	102	600	100	550	200	42	50
Vietnam	2,604	19,670	70	933	18,800	2,611	18,737
Total Southeast Asia	3,004	29,405	1,490	5,489	24,774	2,981	24,296
Sub-Saharan Africa							
Angola	39	50	0	42	8	39	8
Benin	0	0	0	0	0	0	0
Burundi	243	350	0	2	300	291	348
Cameroon	211	800	0	75	650	286	725
Central African Republic	162	60	0	25	50	147	35
Congo (Brazzaville)	0	3	0	3	0	0	0
Congo (Kinshasa)	49	400	0	225	175	49	175
Cote d'Ivoire	432	2,150	0	315	1,600	417	1,835
Equatorial Guinea	0	0	0	0	0	0	0
Ethiopia	900	4,500	0	2,100	2,400	900	2,400
Gabon	0	0	0	0	0	0	0
Ghana	5	25	0	2	20	8	23
Guinea	211	350	0	40	350	171	310
Kenya	659	885	0	22	860	665	863
Liberia	0	50	0	0	50	0	50
Madagascar	524	580	0	450	200	454	130
Malawi	1	25	0	1	20	5	24
Nigeria	8	50	0	50	5	3	0
Rwanda	109	300	0	0	300	109	300
Sierra Leone	13	20	0	5	20	8	15
South Africa	0	0	370	370	0	0	0
Tanzania	219	920	0	61	850	218	859
Togo	33	130	0	0	130	33	130
Uganda	411	2,700	0	100	2,700	311	2,600
Zambia	0	70	0	0	70	0	70

Table 05 World Coffee Supply and Distribution, 2008/09 (Continued)
Thousand 60-kilogram bags 1/

Country	Beginning Stocks	Total Production	Bean Imports	Domestic Use	Bean Exports	Ending Stocks	Exportable Production
Zimbabwe	23	30	0	0	30	23	30
Total Sub-Saharan Africa	4,252	14,448	370	3,888	10,788	4,137	10,930

1/ One bag - 132.276 pounds.

Table 06 World Coffee Supply and Distribution, 2007/08
 Thousand 60-kilogram bags 1/

Country	Beginning Stocks	Total Production	Bean Imports	Domestic Use	Bean Exports	Ending Stocks	Exportable Production
Caribbean							
Cuba	0	70	0	65	5	0	5
Dominican Republic	120	465	0	455	80	50	10
Haiti	164	350	0	340	19	155	10
Jamaica	22	20	0	10	24	8	10
Trinidad and Tobago	0	15	0	14	0	0	1
Total Caribbean	306	920	0	884	128	213	36
Central America							
Costa Rica	77	1,867	0	280	1,588	76	1,587
El Salvador	31	1,515	1	224	1,465	18	1,291
Guatemala	125	3,980	0	338	3,820	10	3,642
Honduras	88	3,802	0	239	3,395	235	3,563
Nicaragua	186	1,700	0	165	1,610	81	1,535
Panama	29	170	0	65	100	34	105
Total Central America	536	13,034	1	1,311	11,978	454	11,723
East Asia							
China	0	0	300	300	0	0	0
Japan	2,160	0	6,150	6,350	0	1,960	0
Korea, South	0	0	1,550	1,550	0	0	0
Total East Asia	2,160	0	8,000	8,200	0	1,960	0
Total European Union	14,460	0	43,550	43,835	0	14,175	0
Former Soviet Union - 12							
Russia	0	0	970	970	0	0	0
Total Former Soviet Union - 12	0	0	970	970	0	0	0
Middle East							
Turkey	0	0	220	220	0	0	0
Yemen	0	200	0	170	30	0	30
Total Middle East	0	200	220	390	30	0	30
North Africa							
Algeria	0	0	1,500	1,500	0	0	0
Morocco	0	0	570	570	0	0	0
Total North Africa	0	0	2,070	2,070	0	0	0
North America							
Canada	0	0	1,940	1,940	0	0	0
Mexico	390	4,500	15	2,200	2,420	270	2,300
United States	5,700	153	21,775	22,028	0	5,600	0
Total North America	6,090	4,653	23,730	26,168	2,420	5,870	2,300
Oceania							
Australia	0	0	920	920	0	0	0
New Caledonia	0	0	0	0	0	0	0
Papua New Guinea	562	1,013	0	2	970	603	1,011
Total Oceania	562	1,013	920	922	970	603	1,011
Croatia	0	0	325	325	0	0	0
Norway	125	0	590	590	0	125	0
Switzerland	200	0	1,710	1,710	0	200	0
Total Other Europe	325	0	3,215	3,215	0	325	0
South America							

Table 06 World Coffee Supply and Distribution, 2007/08 (Continued)

Thousand 60-kilogram bags 1/

Country	Beginning Stocks	Total Production	Bean Imports	Domestic Use	Bean Exports	Ending Stocks	Exportable Production
Argentina	0	0	490	490	0	0	0
Bolivia	167	140	0	60	80	167	80
Brazil	8,361	39,100	0	17,390	23,770	2,781	21,710
Colombia	1,302	12,515	0	1,250	10,656	1,411	11,265
Ecuador	14	702	210	148	162	8	554
Guyana	0	0	0	0	0	0	0
Paraguay	91	28	0	30	14	75	0
Peru	24	3,950	0	118	3,840	16	3,832
Venezuela	483	1,000	0	834	200	414	166
Total South America	10,442	57,435	700	20,320	38,722	4,872	37,607
South Asia							
India	2,228	4,665	330	1,574	2,615	1,985	3,091
Sri Lanka	18	35	0	35	2	16	0
Total South Asia	2,246	4,700	330	1,609	2,617	2,001	3,091
Southeast Asia							
Indonesia	48	7,500	470	2,430	5,400	158	5,070
Laos	0	400	0	180	220	0	220
Malaysia	0	450	622	379	20	0	71
Philippines	139	690	382	1,060	2	140	0
Thailand	12	600	200	550	150	102	50
Vietnam	791	18,333	65	885	15,700	2,604	17,448
Total Southeast Asia	990	27,973	1,739	5,484	21,492	3,004	22,859
Sub-Saharan Africa							
Angola	40	35	0	30	6	39	5
Benin	0	0	0	0	0	0	0
Burundi	318	167	0	2	240	243	165
Cameroon	35	795	0	69	550	211	726
Central African Republic	167	65	0	25	45	162	40
Congo (Brazzaville)	0	3	0	3	0	0	0
Congo (Kinshasa)	49	400	0	185	215	49	215
Cote d'Ivoire	931	1,600	0	299	1,525	432	1,301
Equatorial Guinea	0	0	0	0	0	0	0
Ethiopia	1,000	4,200	0	2,000	2,300	900	2,200
Gabon	0	0	0	0	0	0	0
Ghana	7	30	0	2	30	5	28
Guinea	221	400	0	40	370	211	360
Kenya	635	700	0	19	660	659	681
Liberia	0	50	0	9	41	0	41
Madagascar	604	580	0	450	210	524	130
Malawi	2	20	0	1	20	1	19
Nigeria	23	40	0	50	5	8	0
Rwanda	109	250	0	0	250	109	250
Sierra Leone	18	40	0	5	40	13	35
South Africa	0	0	410	410	0	0	0
Tanzania	229	810	0	50	760	219	760
Togo	35	135	0	2	135	33	133
Uganda	271	2,500	0	60	2,300	411	2,440
Zambia	0	60	0	1	59	0	59
Zimbabwe	27	30	0	4	30	23	26
Total Sub-Saharan Africa	4,721	12,910	410	3,716	9,791	4,252	9,614
World							

Table 06 World Coffee Supply and Distribution, 2007/08 (Continued)

Thousand 60-kilogram bags 1/

Country	Beginning Stocks	Total Production	Bean Imports	Domestic Use	Bean Exports	Ending Stocks	Exportable Production
World	42,838	122,838	85,855	119,094	88,148	37,729	88,271

1/ One bag - 132.276 pounds.