

---

# Macintosh Users and ECF

---

The topics below provide information specific to Macintosh users that will be useful when using ECF in the *United States Court of Appeals for the Ninth Circuit*.

The Apple Macintosh platform can now be used to run all parts of the ECF with no extra software.

- “Prerequisites for Macintosh Users” on page 2
- “Starting ECF on a Mac” on page 8
- “Known Differences for Mac Users” on page 12
- “Known Java Issues for Mac Users” on page 14

## Prerequisites for Macintosh Users

Both the hardware and the operating system (OS X) must be 64 bit. All Macintosh computers made in about the last 18 months are 64-bit capable. In summary, you need:

- 64-bit capable Macintosh
- OS X 10.5 (or higher)
- Java 1.6 Update 13

You must install the latest Java update for Macintosh users, released by Apple on 18 June 2009 as *Java for Mac OS X 10.5 Update 4* (this is Java 1.6 Update 13).

You will not be able to log in if you have **not** installed this update.

**CAUTION:** Make sure you review the information in “Known Java Issues for Mac Users” on page 14 before you attempt to start ECF.

**NOTE:** If you have an Intel-based Mac that is not 64-bit capable, you may be able to use one of the parallel operating system products, such as Fusion or Parallels, that allow a Mac to mimic the Windows operating system. Fusion and Parallels only run on Intel-based Mac systems.

### Before you start, make sure you do the following:

1. Verify that you have the correct Java version, see “To verify that you have the correct Java version” below.
2. Configure your browser to accept cookies.
3. Decide which browser you want to use for ECF, define that browser as the default browser to use, and clear the browser cache and cookies. See one of the topics below for step-by-step instructions:
  - “To set Firefox as the default browser and clear the browser cache and cookies” on page 3
  - “To set Safari as the default browser and clear the browser cache and cookies” on page 7

### To verify that you have the correct Java version

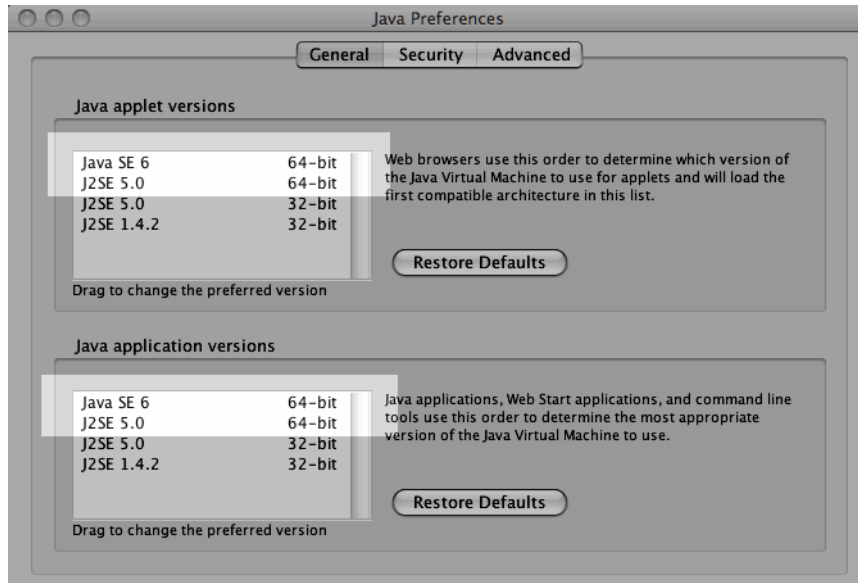
1. From **Finder**, click **Go**, then click **Applications**.
2. In **Applications**, expand **Utilities**, then expand **Java**.
3. Double-click **Java Preferences**.

The Java Preferences dialog box opens.

4. Drag the entries up and down to match the order shown in [Figure 1](#).

**CAUTION:** If you do not see Java SE 6, you do not have the latest version of Java. In this case, download it from [Apple](#), install the update and start again.

**Figure 1.** Java Preferences Updated



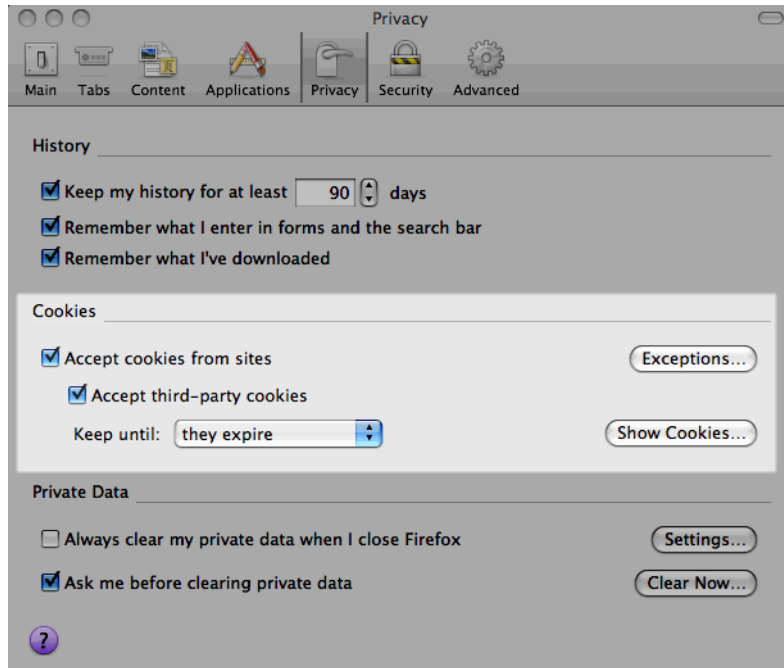
### ***To set Firefox as the default browser and clear the browser cache and cookies***

1. Open Firefox.
2. Choose **Firefox > Preferences**.
3. In the dialog box that opens, click the **Advanced** icon at the top, then make sure the **General** tab is the active tab.
4. At the bottom of the dialog box, under **System Defaults**, click the **Check Now** button to check and set Firefox as the default browser.
5. Click the **Privacy** icon at the top.

6. Under **Cookies**, make sure the **Accept cookies from sites** and **Accept third-party cookies** checkboxes are selected.

An example is shown in [Figure 2](#).

**Figure 2.** Cookies Section in Firefox Preferences



7. Click the **Show Cookies** button.

The Cookies dialog box opens. An example is shown in [Figure 3](#).

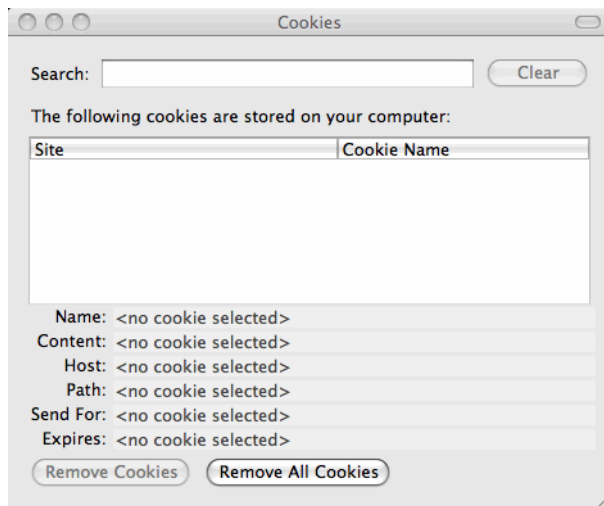
**Figure 3.** Cookies Dialog Box



8. In the Cookies dialog box, click the **Remove All Cookies** button.

The Cookies dialog box should look similar to the one shown in [Figure 4](#).

**Figure 4.** Cookies Dialog Box, After Remove All Cookies

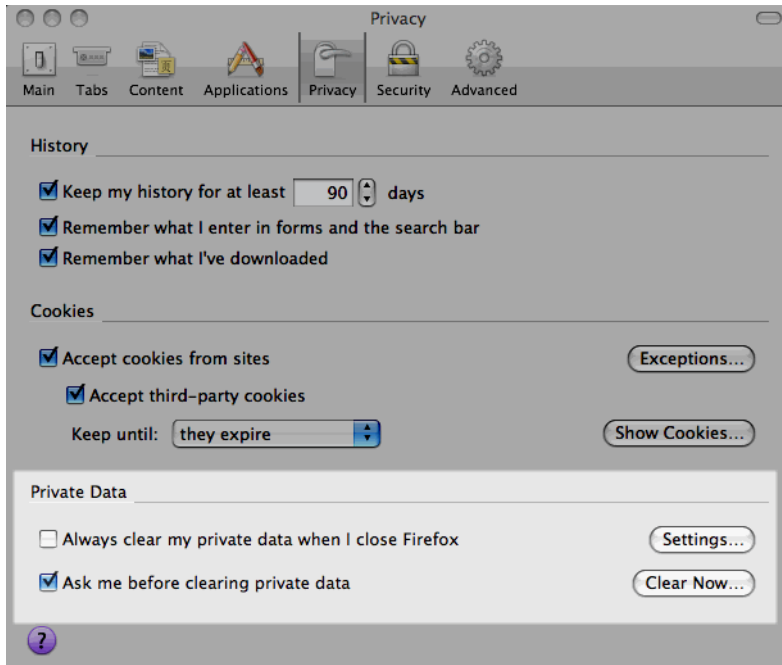


9. Close the Cookies dialog box.

10. Back in the Preferences dialog box, under **Private Data**, click the **Settings** button.

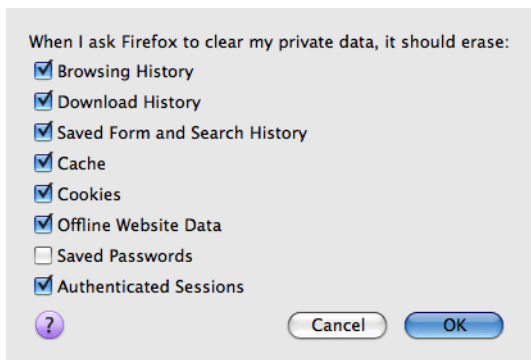
The **Private Data** area is highlighted in [Figure 5](#).

**Figure 5.** Private Data Area



A smaller dialog box with privacy settings opens. An example is shown in [Figure 6](#).

**Figure 6.** Privacy Settings



11. Select the **Cache**, **Cookies**, **Offline Website Data**, and **Authenticated Sessions** checkboxes and click the **OK** button.

12. Back in the Preferences dialog box, under **Private** Data, click the **Clear Now** button.

The **Private Data** area is highlighted in [Figure 5 on page 6](#).

13. In the Clear Private Data dialog box that opens, click the **Clear Private Data Now** button.
14. Close the Preferences dialog box.

### ***To set Safari as the default browser and clear the browser cache and cookies***

1. Open Safari.
2. Choose **Safari > Preferences**.
3. In the dialog box that opens, click the **General** icon at the top.
4. From the **Default web browser** drop-down list, select Safari.
5. In the dialog box, click the **Security** icon at the top.
6. Under Accept Cookies, click the **Show Cookies** button.
7. In the dialog box that opens, click the **Remove All** button, then click the **Done** button.
8. Close the Preferences dialog box.
9. Choose **Safari > Empty Cache**.
10. In the dialog box that opens, click the **Empty** button.

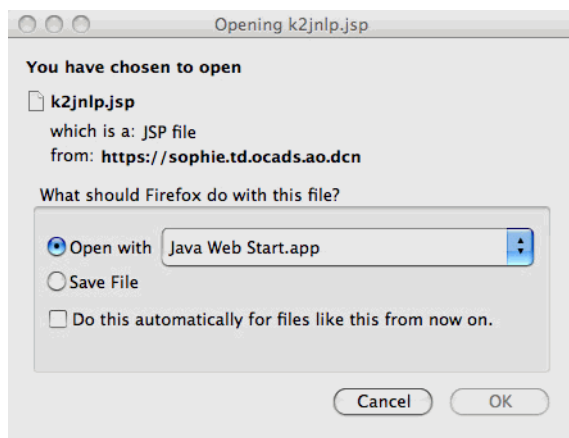
## Starting ECF on a Mac

**CAUTION:** Make sure you review the information in “Known Java Issues for Mac Users” on page 14 before you attempt to start ECF.

**NOTE:** The launching process described in this topic has been tested using the Safari and the Firefox browsers. Other browsers may work.

After you enter your login and password and you click the **Login** button, the browser may ask what to do next. This one-time setup is to associate the Java Network Launching Protocol (JNLP) file with Java Web Start. The dialog box shown in [Figure 7](#) opens.

**Figure 7.** Opening k2jnlp.jsp Dialog Box



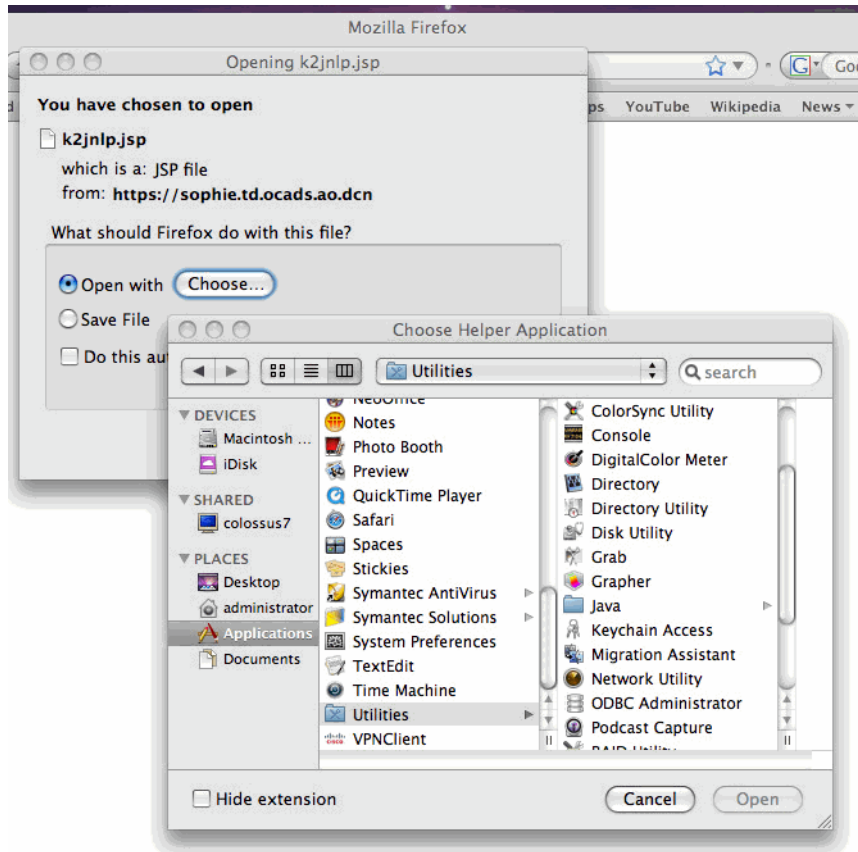
1. If the dialog box shows Java Web Start in the drop-down list next to **Open with**, then select the **Open with** radio button and go to step [Step 3 on page 10](#).



2. If you see a **Choose** button next to the **Open with** radio button, then click **Choose** to select the helper application.

A dialog box similar to the one shown in [Figure 8](#) opens.

**Figure 8.** Choose Helper Application

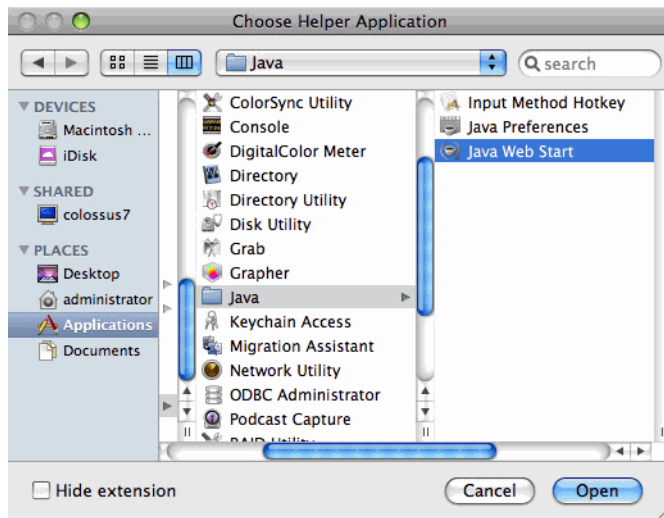


Do the following:

- a. In the left hand list, find and click the entry labeled **Utilities**.
- b. In the list on the right, find and click the entry labeled **Java**.

This shows the list of helper applications for Java, as shown in [Figure 9](#).

**Figure 9.** Choose Helper Application - Java



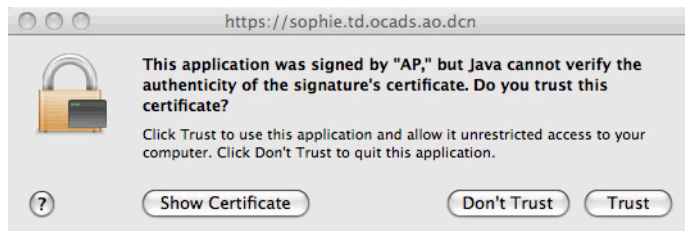
- c. Click **Java Web Start** and click the **Open** button.
3. Select the checkbox labeled **Do this automatically for files like this from now on** so that you do not have to do this twice.
4. Click the **OK** button.

A Java Starting message box opens and then the system may ask you to authenticate the certificate.

5. If a certificate dialog box opens asking you if you want to accept the certificate from “ecf.ca9.uscourts.gov,” click the **Trust** button to continue.

Another certificate dialog box opens. This time, you must click the Trust button to ensure that ECF will be able to read PDF files from your Mac. The PDF certificate dialog box will look similar to the one shown in [Figure 10](#).

**Figure 10.** PDF Certificate

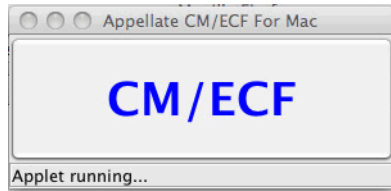


6. Click the **Trust** button.

At this point, a small window with a blue CM/ECF label opens. This is the program itself. An example of this window is shown in [Figure 11](#).

**CAUTION: Do not close this window at any time.**

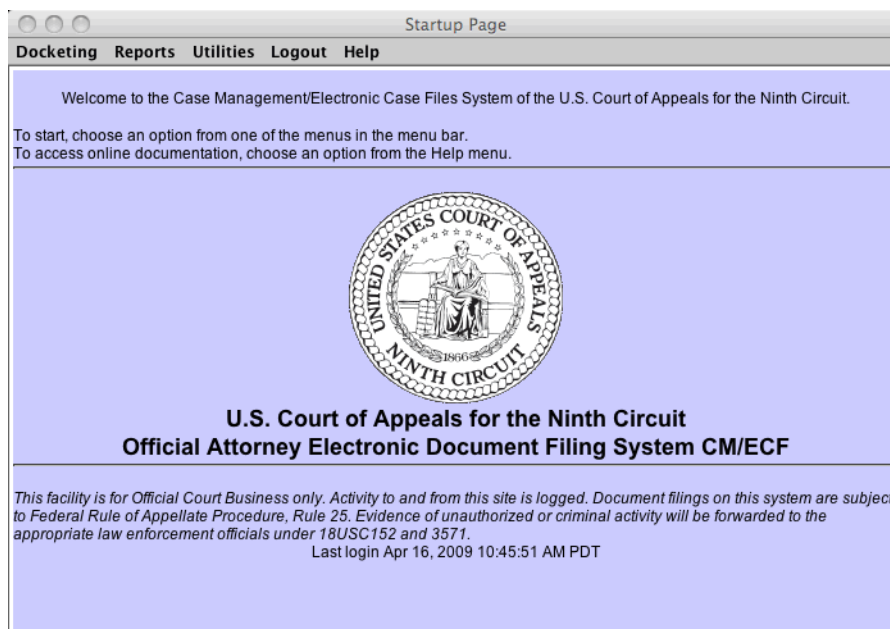
**Figure 11.** Appellate CM/ECF For Mac Background Window



The Startup Page window opens in the foreground. Notice that your last login date and time are shown near the middle of the page. An example of this window is shown in [Figure 12](#).

**CAUTION: Do not close the Startup Page window at any time.** If you do close this window by accident, find the background window, shown in [Figure 11](#), and click the large CM/ECF button.

**Figure 12.** Appellate CM/ECF For Mac Startup Page Window



## Known Differences for Mac Users

**CAUTION:** Make sure you review the information in “Known Java Issues for Mac Users” on page 14 before you attempt to start ECF.

### Longer Startup Process

In order to maintain the same security for the ECF application for all users, the URL used behind the scenes for downloading the program to the Mac is different each time. This will make the startup process take longer for Mac users, since the URL will not be cached.

### Automatic Login as a PACER User

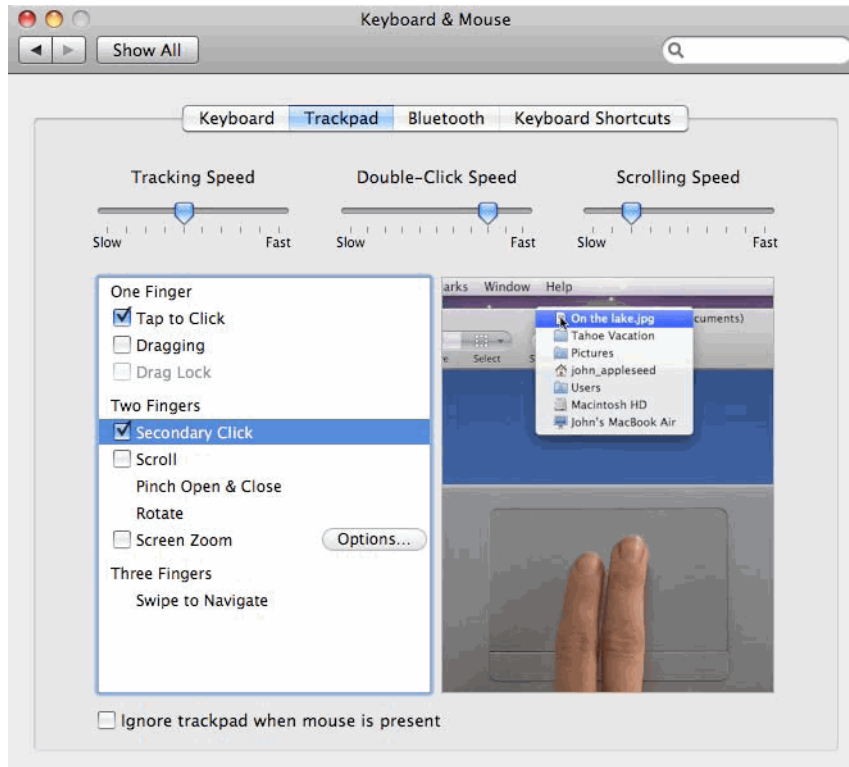
Automatic login as a PACER user when an attorney logs in as a filing user is not supported on the Mac.

The default Mac browser must be used to log in to ECF. If a secondary browser is used, it will not know that you are logged in when running browser-based portions of the system. To change the default browser, go to Safari > Preferences > General. Use the Default web browser to indicate the default web browser.

## Right-Click Functionality

There are a few areas in ECF Appellate which feature right-click functionality. Mac users can access the same features by going to System Preferences > Keyboard and Mouse > Trackpad, and selecting the checkbox labeled **Tap trackpad using two fingers for secondary click**.

Figure 13. Secondary Click



## Known Java Issues for Mac Users

CM/ECF needs Java Web Start to run correctly on Macintosh systems. With the latest Java update from Apple, the location of Java Web Start has changed and you may have to manually identify that location.

**If you have Safari and Firefox, the Court recommends using *Firefox* to file electronically in order to avoid some of the issues described in this section.**

### **Safari Browser is the Only Browser Installed on Your System**

Assuming you followed the instructions for clearing the cache and cookies, you should be able to run CM/ECF without any problems.

### **Safari and Firefox Installed on Your System, Using Safari to Log In to CM/ECF**

Assuming you followed the instructions for clearing the cache and cookies, and setting the default browser, you should be able to run CM/ECF to do your filings. However, PACER Report, Service List, and Help will open in a new Firefox window instead of the existing Safari window. As a result, the browser (Firefox) will not recognize that you are logged in to CM/ECF and will not allow you to run the reports.

As a workaround, you can copy the URL from the Firefox window to a new tab in your Safari browser. For this reason, the Court recommends using Firefox to file electronically if you have both Safari and Firefox installed on your system.

### **Safari and Firefox Installed on Your System, Using Firefox to Log In to CM/ECF**

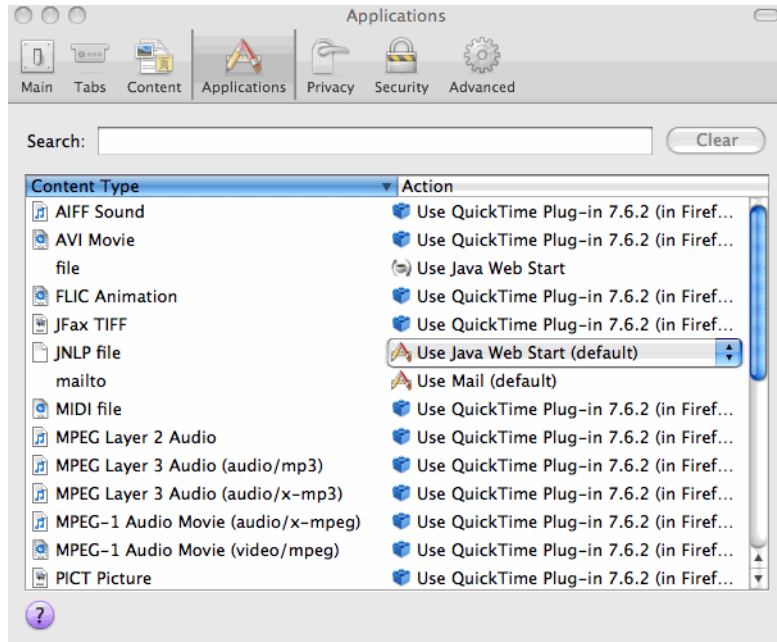
Assuming you followed the instructions for clearing the cache and cookies, and setting the default browser, you should be able to run CM/ECF after following the steps below to find and identify Java Web Start:

1. Open Firefox.
2. Choose **Firefox > Preferences**.
3. In the dialog box that opens, click the **Application** icon at the top.

4. In the **Content Type** box (on the left) scroll down to **JNLP File** and select that entry.

By default, the **Action** for this **Content Type** is set to **Use Java Web Start (default)**, as shown in Figure 14.

**Figure 14.** Applications - JNLP File Content Type, Default Setting



5. In the **Action** box (on the right), select **Use Other**.

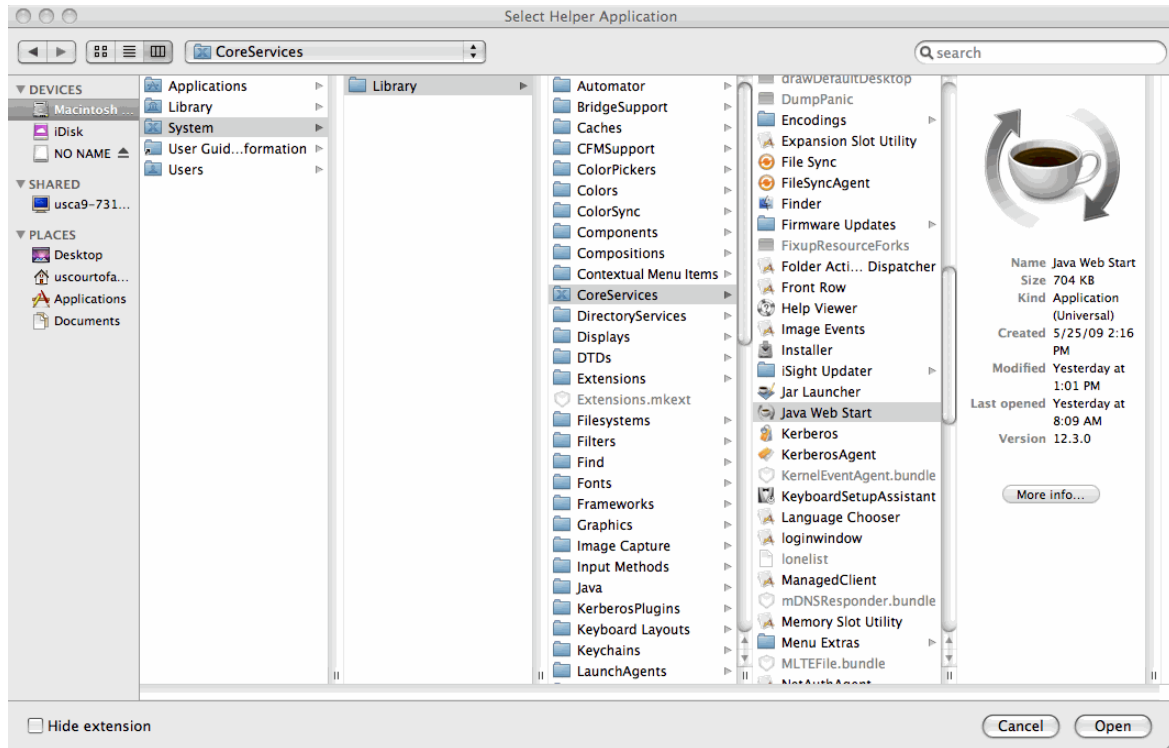
**CAUTION: Do not select Use Java Web Start (default).**

A window titled Select Helper Application opens.

6. In the Select Helper Application window, under **DEVICES**, click **Macintosh HD > System > Library > CoreServices > Java Web Start**.

Figure 15 shows an example of the correct selections.

Figure 15. Select Helper Applications Window

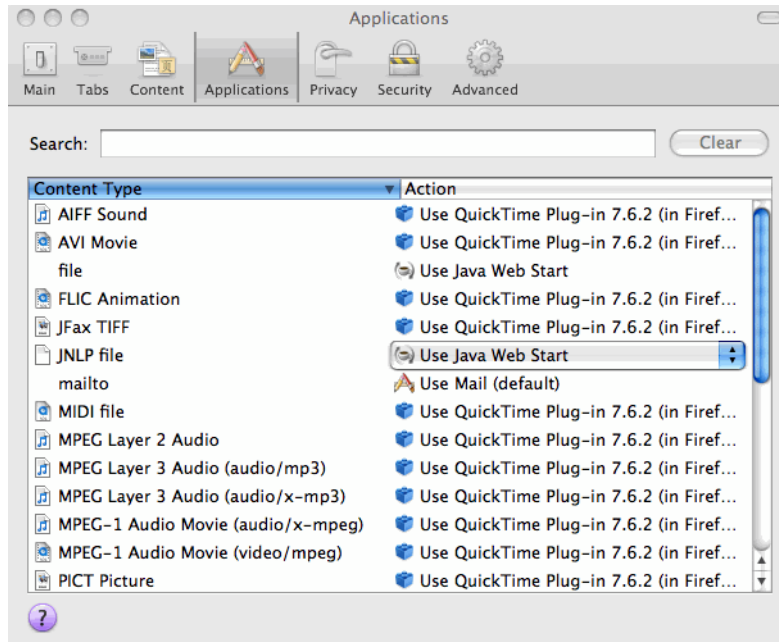




7. Click the **Open** button (at the bottom of the window).

The Select Helper Application window closes and the Preferences dialog box (Applications) now shows the correct selection for the JNLP file. An example is shown in [Figure 16](#).

**Figure 16.** Applications - JNLP File Content Type Updated



8. Close the Preferences dialog box.
9. Restart Firefox and then follow the instructions in “[To set Firefox as the default browser and clear the browser cache and cookies](#)” on page 3 before attempting to log in.