

Table 4.1
Cancer of the Female Breast (Invasive)

Trends in SEER Incidence^{ab} and U.S. Mortality^c Using the Joinpoint Regression Program,
1975-2006 With up to Four Joinpoints, 1992-2006 With up to Two Joinpoints,
All Ages by Race/Ethnicity

	Joinpoint Trend 1		Joinpoint Trend 2		Joinpoint Trend 3		Joinpoint Trend 4		Joinpoint Trend 5		AAPC ^d	
	Years	APC	Years	APC	Years	APC	Years	APC	Years	APC	1997-2006	2002-2006
<u>SEER 9 Delay-Adjusted Incidence^a, 1975-2006</u>												
All Races	1975-1980	-0.5	1980-1987	4.0*	1987-1994	-0.1	1994-1999	1.6*	1999-2006	-2.0*	-1.2*	-2.0*
White	1975-1980	-0.5	1980-1987	4.1*	1987-1994	-0.2	1994-1999	1.9*	1999-2006	-2.2*	-1.3*	-2.2*
Black	1975-1992	2.3*	1992-2006	-0.2							-0.2	-0.2
<u>SEER 13 Delay-Adjusted Incidence^b, 1992-2006</u>												
All Races	1992-1999	1.3*	1999-2006	-2.0*							-1.3*	-2.0*
White	1992-1999	1.5*	1999-2006	-2.2*							-1.4*	-2.2*
Black	1992-2006	-0.1									-0.1	-0.1
<u>SEER 9 Observed Incidence^a, 1975-2006</u>												
All Races	1975-1980	-0.5	1980-1987	4.0*	1987-1994	-0.2	1994-1999	1.6*	1999-2006	-2.2*	-1.3*	-2.2*
White	1975-1980	-0.5	1980-1987	4.1*	1987-1994	-0.2	1994-1999	1.9*	1999-2006	-2.3*	-1.4*	-2.3*
Black	1975-1992	2.3*	1992-2006	-0.3							-0.3	-0.3
<u>SEER 13 Observed Incidence^b, 1992-2006</u>												
All Races	1992-1999	1.2*	1999-2006	-2.2*							-1.4*	-2.2*
White	1992-1999	1.4*	1999-2006	-2.4*							-1.5*	-2.4*
White NH ^{ef}	1992-1999	1.6*	1999-2006	-2.3*							-1.5*	-2.3*
Black	1992-2006	-0.2									-0.2	-0.2
Black NH ^{ef}	1992-2006	-0.2									-0.2	-0.2
API ^e	1992-1994	-4.8	1994-1997	7.0	1997-2006	-0.8					-0.8*	-0.8*
AI/AN ^{eg}	1992-2006	-0.3									-0.3	-0.3
Hispanic ^f	1992-2006	0.0									0.0	0.0
<u>U.S. Cancer Mortality^c, 1975-2006</u>												
All Races	1975-1990	0.4*	1990-1995	-1.8*	1995-1998	-3.3*	1998-2006	-1.9*			-2.0*	-1.9*
White	1975-1990	0.3*	1990-1995	-2.0*	1995-1998	-3.5*	1998-2006	-2.0*			-2.1*	-2.0*
Black	1975-1992	1.5*	1992-2006	-1.4*							-1.4*	-1.4*
<u>U.S. Cancer Mortality^c, 1992-2006</u>												
All Races	1992-1995	-1.3*	1995-1998	-3.5*	1998-2006	-1.9*					-2.1*	-1.9*
White	1992-1995	-1.5*	1995-1998	-3.7*	1998-2006	-1.9*					-2.1*	-1.9*
White NH ^{ef}	1992-1995	-1.6*	1995-1998	-3.6*	1998-2006	-1.7*					-1.9*	-1.7*
Black	1992-1995	0.4	1995-2006	-1.6*							-1.6*	-1.6*
Black NH ^{ef}	1992-2006	-1.1*									-1.1*	-1.1*
API ^e	1992-2006	-0.6*									-0.6*	-0.6*
AI/AN ^{eg}	1992-2006	0.3									0.3	0.3
Hispanic ^f	1992-2006	-1.9*									-1.9*	-1.9*

Joinpoint Regression Program Version 3.3.1, April 2008, National Cancer Institute. (<http://srab.cancer.gov/joinpoint/>).

The APC is the Annual Percent Change based on rates age-adjusted to the 2000 US Std Population (19 age groups - Census P25-1130).

^a Trends are from the SEER 9 areas (San Francisco, Connecticut, Detroit, Hawaii, Iowa, New Mexico, Seattle, Utah, and Atlanta).

^b Trends are from the SEER 13 areas (SEER 9 Areas, Los Angeles, San Jose-Monterey, Rural Georgia, and the Alaska Native Registry).

^c Trends are from US Mortality Files, National Center for Health Statistics, Centers for Disease Control and Prevention.

^d The AAPC is the Average Annual Percent Change and is based on the APCs calculated by Joinpoint.

^e API - Asian/Pacific Islander, AI/AN - American Indian/Alaska Native, NH - Non-Hispanic

^f Hispanic and Non-Hispanic are not mutually exclusive from whites, blacks, Asian/Pacific Islanders, and American Indians/Alaska

Natives. Incidence data for Hispanics and Non-Hispanics are based on NHIA and exclude cases from the Alaska Native Registry.

The Hispanic and Non-Hispanic mortality trends exclude deaths from CT, DC, ME, MD, MN, NH, NY, ND, OK and VT.

^g Data for American Indian/Alaska Native are based on the CHSDA (Contract Health Service Delivery Area) counties.

* The APC/AAPC is significantly different from zero ($p < .05$).

- Joinpoint regression line analysis could not be performed on data series.

Table 4.2
Cancer of the Female Breast (Invasive)

Trends in SEER Incidence^{ab} and U.S. Mortality^c Using the Joinpoint Regression Program,
1975-2006 With up to Four Joinpoints, 1992-2006 With up to Two Joinpoints,
Ages <50 by Race/Ethnicity

	Joinpoint Trend 1		Joinpoint Trend 2		Joinpoint Trend 3		Joinpoint Trend 4		Joinpoint Trend 5		AAPC ^d	
	Years	APC	Years	APC	Years	APC	Years	APC	Years	APC	1997-2006	2002-2006
<u>SEER 9 Delay-Adjusted Incidence^a, 1975-2006</u>												
All Races	1975-1980	-1.3	1980-1986	2.8*	1986-2006	-0.2					-0.2	-0.2
White	1975-1980	-1.1	1980-1986	2.8*	1986-2006	-0.2					-0.2*	-0.2*
Black	1975-1991	1.4*	1991-2006	-0.6*							-0.6*	-0.6*
<u>SEER 13 Delay-Adjusted Incidence^b, 1992-2006</u>												
All Races	1992-2006	-0.1									-0.1	-0.1
White	1992-2006	-0.1									-0.1	-0.1
Black	1992-2002	-1.4*	2002-2006	2.6							0.4	2.6
<u>SEER 9 Observed Incidence^a, 1975-2006</u>												
All Races	1975-1980	-1.4	1980-1986	2.9*	1986-2006	-0.2*					-0.2*	-0.2*
White	1975-1980	-1.1	1980-1986	2.8*	1986-2006	-0.2*					-0.2*	-0.2*
Black	1975-1991	1.4*	1991-2006	-0.8*							-0.8*	-0.8*
<u>SEER 13 Observed Incidence^b, 1992-2006</u>												
All Races	1992-2006	-0.2									-0.2	-0.2
White	1992-1998	0.6	1998-2006	-0.7*							-0.5*	-0.7*
White NH ^{ef}	1992-1998	0.8*	1998-2006	-0.5*							-0.3	-0.5*
Black	1992-2002	-1.4*	2002-2006	2.2							0.2	2.2
Black NH ^{ef}	1992-2002	-1.5*	2002-2006	2.5							0.3	2.5
API ^e	1992-2004	1.4*	2004-2006	-5.5							-0.1	-2.1
AI/AN ^{eg}	1992-2006	0.7									0.7	0.7
Hispanic ^f	1992-2006	0.0									0.0	0.0
<u>U.S. Cancer Mortality^c, 1975-2006</u>												
All Races	1975-1990	-0.4*	1990-2006	-3.2*							-3.2*	-3.2*
White	1975-1990	-0.6*	1990-2006	-3.6*							-3.6*	-3.6*
Black	1975-1988	1.8*	1988-2006	-1.9*							-1.9*	-1.9*
<u>U.S. Cancer Mortality^c, 1992-2006</u>												
All Races	1992-2006	-3.2*									-3.2*	-3.2*
White	1992-2006	-3.6*									-3.6*	-3.6*
White NH ^{ef}	1992-2006	-3.4*									-3.4*	-3.4*
Black	1992-2006	-2.1*									-2.1*	-2.1*
Black NH ^{ef}	1992-2006	-2.0*									-2.0*	-2.0*
API ^e	1992-2006	-2.1*									-2.1*	-2.1*
AI/AN ^{eg}	1992-2006	-0.8									-0.8	-0.8
Hispanic ^f	1992-2006	-3.1*									-3.1*	-3.1*

Joinpoint Regression Program Version 3.3.1, April 2008, National Cancer Institute. (<http://srab.cancer.gov/joinpoint/>).

The APC is the Annual Percent Change based on rates age-adjusted to the 2000 US Std Population (19 age groups - Census P25-1130).

^a Trends are from the SEER 9 areas (San Francisco, Connecticut, Detroit, Hawaii, Iowa, New Mexico, Seattle, Utah, and Atlanta).

^b Trends are from the SEER 13 areas (SEER 9 Areas, Los Angeles, San Jose-Monterey, Rural Georgia, and the Alaska Native Registry).

^c Trends are from US Mortality Files, National Center for Health Statistics, Centers for Disease Control and Prevention.

^d The AAPC is the Average Annual Percent Change and is based on the APCs calculated by Joinpoint.

^e API - Asian/Pacific Islander, AI/AN - American Indian/Alaska Native, NH - Non-Hispanic

^f Hispanic and Non-Hispanic are not mutually exclusive from whites, blacks, Asian/Pacific Islanders, and American Indians/Alaska

Natives. Incidence data for Hispanics and Non-Hispanics are based on NHIA and exclude cases from the Alaska Native Registry.

The Hispanic and Non-Hispanic mortality trends exclude deaths from CT, DC, ME, MD, MN, NH, NY, ND, OK and VT.

^g Data for American Indian/Alaska Native are based on the CHSDA (Contract Health Service Delivery Area) counties.

* The APC/AAPC is significantly different from zero ($p < .05$).

- Joinpoint regression line analysis could not be performed on data series.

Table 4.3
Cancer of the Female Breast (Invasive)

Trends in SEER Incidence^{ab} and U.S. Mortality^c Using the Joinpoint Regression Program,
1975-2006 With up to Four Joinpoints, 1992-2006 With up to Two Joinpoints,
Ages 50+ by Race/Ethnicity

	Joinpoint Trend 1		Joinpoint Trend 2		Joinpoint Trend 3		Joinpoint Trend 4		Joinpoint Trend 5		AAPC ^d	
	Years	APC	Years	APC	Years	APC	Years	APC	Years	APC	1997-2006	2002-2006
<u>SEER 9 Delay-Adjusted Incidence^a, 1975-2006</u>												
All Races	1975-1982	0.9	1982-1987	5.3*	1987-1993	-0.3	1993-1999	1.9*	1999-2006	-2.5*	-1.5*	-2.5*
White	1975-1982	0.9	1982-1987	5.6*	1987-1993	-0.4	1993-1999	2.0*	1999-2006	-2.6*	-1.6*	-2.6*
Black	1975-1994	2.5*	1994-2006	-0.3							-0.3	-0.3
<u>SEER 13 Delay-Adjusted Incidence^b, 1992-2006</u>												
All Races	1992-1999	1.6*	1999-2006	-2.5*							-1.6*	-2.5*
White	1992-1999	1.8*	1999-2006	-2.7*							-1.7*	-2.7*
Black	1992-2006	0.1									0.1	0.1
<u>SEER 9 Observed Incidence^a, 1975-2006</u>												
All Races	1975-1982	0.9	1982-1987	5.3*	1987-1993	-0.3	1993-1999	1.8*	1999-2006	-2.7*	-1.7*	-2.7*
White	1975-1982	0.9	1982-1987	5.5*	1987-1993	-0.4	1993-1999	2.0*	1999-2006	-2.8*	-1.8*	-2.8*
Black	1975-1995	2.3*	1995-2006	-0.6							-0.6	-0.6
<u>SEER 13 Observed Incidence^b, 1992-2006</u>												
All Races	1992-1999	1.6*	1999-2006	-2.7*							-1.8*	-2.7*
White	1992-1999	1.8*	1999-2006	-2.9*							-1.9*	-2.9*
White NH ^{ef}	1992-1999	2.0*	1999-2006	-2.9*							-1.8*	-2.9*
Black	1992-1997	1.7	1997-2006	-0.8							-0.8*	-0.8*
Black NH ^{ef}	1992-2006	-0.1									-0.1	-0.1
API ^e	1992-1994	-5.5	1994-1997	8.0	1997-2006	-1.2*					-1.2*	-1.2*
AI/AN ^{eg}	1992-2006	-0.7									-0.7	-0.7
Hispanic ^f	1992-2006	0.1									0.1	0.1
<u>U.S. Cancer Mortality^c, 1975-2006</u>												
All Races	1975-1990	0.6*	1990-2006	-2.0*							-2.0*	-2.0*
White	1975-1990	0.5*	1990-2006	-2.1*							-2.1*	-2.1*
Black	1975-1993	1.6*	1993-2006	-1.2*							-1.2*	-1.2*
<u>U.S. Cancer Mortality^c, 1992-2006</u>												
All Races	1992-1995	-1.2*	1995-1998	-3.2*	1998-2006	-1.7*					-1.9*	-1.7*
White	1992-1994	-0.6	1994-1997	-3.4*	1997-2006	-1.9*					-1.9*	-1.9*
White NH ^{ef}	1992-1994	-0.5	1994-1997	-3.5*	1997-2006	-1.6*					-1.6*	-1.6*
Black	1992-2006	-1.1*									-1.1*	-1.1*
Black NH ^{ef}	1992-2006	-0.9*									-0.9*	-0.9*
API ^e	1992-2006	-0.1									-0.1	-0.1
AI/AN ^{eg}	1992-2006	0.5									0.5	0.5
Hispanic ^f	1992-2006	-1.6*									-1.6*	-1.6*

Joinpoint Regression Program Version 3.3.1, April 2008, National Cancer Institute. (<http://srab.cancer.gov/joinpoint/>).

The APC is the Annual Percent Change based on rates age-adjusted to the 2000 US Std Population (19 age groups - Census P25-1130).

^a Trends are from the SEER 9 areas (San Francisco, Connecticut, Detroit, Hawaii, Iowa, New Mexico, Seattle, Utah, and Atlanta).

^b Trends are from the SEER 13 areas (SEER 9 Areas, Los Angeles, San Jose-Monterey, Rural Georgia, and the Alaska Native Registry).

^c Trends are from US Mortality Files, National Center for Health Statistics, Centers for Disease Control and Prevention.

^d The AAPC is the Average Annual Percent Change and is based on the APCs calculated by Joinpoint.

^e API - Asian/Pacific Islander, AI/AN - American Indian/Alaska Native, NH - Non-Hispanic

^f Hispanic and Non-Hispanic are not mutually exclusive from whites, blacks, Asian/Pacific Islanders, and American Indians/Alaska

Natives. Incidence data for Hispanics and Non-Hispanics are based on NHIA and exclude cases from the Alaska Native Registry.

The Hispanic and Non-Hispanic mortality trends exclude deaths from CT, DC, ME, MD, MN, NH, NY, ND, OK and VT.

^g Data for American Indian/Alaska Native are based on the CHSDA (Contract Health Service Delivery Area) counties.

* The APC/AAPC is significantly different from zero ($p < .05$).

- Joinpoint regression line analysis could not be performed on data series.

Table 4.4
Cancer of the Female Breast (*In Situ*)

Trends in SEER Incidence^{ab} Using the Joinpoint Regression Program,
1975-2006 With up to Four Joinpoints, 1992-2006 With up to Two Joinpoints,
All Ages by Race/Ethnicity

	Joinpoint Trend 1		Joinpoint Trend 2		Joinpoint Trend 3		Joinpoint Trend 4		Joinpoint Trend 5		AAPC ^d	
	Years	APC	Years	APC	Years	APC	Years	APC	Years	APC	1997-2006	2002-2006
<u>SEER 9 Delay-Adjusted Incidence^a, 1975-2006</u>												
All Races	1975-1981	-3.0	1981-1987	24.9*	1987-1995	4.2*	1995-1998	11.9*	1998-2006	0.0	1.2*	0.0
White	1975-1981	-2.9	1981-1987	25.5*	1987-1995	3.9*	1995-1998	12.1*	1998-2006	0.0	1.2	0.0
Black	1975-1981	3.1	1981-1988	18.5*	1988-1998	7.8*	1998-2006	1.7*			2.4*	1.7*
<u>SEER 13 Delay-Adjusted Incidence^b, 1992-2006</u>												
All Races	1992-1999	7.4*	1999-2006	-0.4							1.3*	-0.4
White	1992-1994	0.8	1994-1999	8.8*	1999-2006	-0.9*					1.2*	-0.9*
Black	1992-1998	9.0*	1998-2006	1.4							2.3*	1.4
<u>SEER 9 Observed Incidence^a, 1975-2006</u>												
All Races	1975-1981	-3.0	1981-1987	24.9*	1987-1995	4.2*	1995-1998	12.0*	1998-2006	-0.1	1.2*	-0.1
White	1975-1981	-2.9	1981-1987	25.4*	1987-1995	3.9*	1995-1998	12.1*	1998-2006	-0.2	1.1	-0.2
Black	1975-1981	3.1	1981-1988	18.4*	1988-1998	7.8*	1998-2006	1.6*			2.3*	1.6*
<u>SEER 13 Observed Incidence^b, 1992-2006</u>												
All Races	1992-1999	7.5*	1999-2006	-0.4							1.3*	-0.4
White	1992-1994	0.8	1994-1999	8.8*	1999-2006	-1.0*					1.1*	-1.0*
White NH ^{ef}	1992-1994	0.7	1994-1999	9.2*	1999-2006	-1.0*					1.2*	-1.0*
Black	1992-1998	9.1*	1998-2006	1.3							2.1*	1.3
Black NH ^{ef}	1992-1998	8.9*	1998-2006	1.4							2.2*	1.4
API ^e	1992-2002	7.5*	2002-2006	-3.0							2.7*	-3.0
AI/AN ^{eg}	1992-2006	2.4									2.4	2.4
Hispanic ^f	1992-1998	8.4*	1998-2006	1.7*							2.5*	1.7*

Joinpoint Regression Program Version 3.3.1, April 2008, National Cancer Institute. (<http://srab.cancer.gov/joinpoint/>).

The APC is the Annual Percent Change based on rates age-adjusted to the 2000 US Std Population (19 age groups - Census P25-1130).

Trends are from the SEER 9 areas (San Francisco, Connecticut, Detroit, Hawaii, Iowa, New Mexico, Seattle, Utah, and Atlanta).

Trends are from the SEER 13 areas (SEER 9 Areas, Los Angeles, San Jose-Monterey, Rural Georgia, and the Alaska Native Registry).

Trends are from US Mortality Files, National Center for Health Statistics, Centers for Disease Control and Prevention.

The AAPC is the Average Annual Percent Change and is based on the APCs calculated by Joinpoint.

API - Asian/Pacific Islander, AI/AN - American Indian/Alaska Native, NH - Non-Hispanic

Hispanic and Non-Hispanic are not mutually exclusive from whites, blacks, Asian/Pacific Islanders, and American Indians/Alaska

Natives. Incidence data for Hispanics and Non-Hispanics are based on NHIA and exclude cases from the Alaska Native Registry.

The Hispanic and Non-Hispanic mortality trends exclude deaths from CT, DC, ME, MD, MN, NH, NY, ND, OK and VT.

Data for American Indian/Alaska Native are based on the CHSDA (Contract Health Service Delivery Area) counties.

* The APC/AAPC is significantly different from zero ($p < .05$).

- Joinpoint regression line analysis could not be performed on data series.

a
b
c
d
e
f
g
*
-

Table 4.5
Cancer of the Breast (Invasive)

Age-adjusted SEER Incidence^a Rates by Year, Race and Sex

Year of Diagnosis:	All Races			Whites			Blacks		
	Total	Males	Females	Total	Males	Females	Total	Males	Females
1975	58.05	0.85	105.06	59.44	0.88	107.32	52.10	-	93.56
1976	56.44	1.10	101.90	58.12	1.12	104.80	48.03	-	85.34
1977	55.98	0.96	100.82	57.47	0.88	103.43	49.67	-	87.03
1978	55.84	0.90	100.61	57.54	0.89	103.61	48.27	-	86.09
1979	56.83	0.99	102.08	58.32	0.94	104.78	49.86	-	86.85
1980	56.88	0.90	102.19	58.53	0.95	105.09	50.52	-	89.35
1981	59.29	1.00	106.29	61.23	0.93	109.89	54.35	-	94.24
1982	59.22	0.98	106.45	61.08	0.94	109.97	53.98	-	93.66
1983	61.90	1.04	111.14	63.75	1.13	114.55	58.83	-	103.35
1984	64.46	0.92	115.96	66.59	0.93	119.93	58.32	-	102.29
1985	69.08	0.95	124.18	71.03	0.97	127.89	64.00	-	111.49
1986	70.44	0.94	126.79	72.31	0.95	130.42	66.21	-	114.95
1987	74.76	0.96	134.45	77.83	0.98	140.31	63.01	-	109.33
1988	73.06	1.23	131.27	75.64	1.17	136.36	68.95	2.76	118.57
1989	70.70	1.13	127.13	73.35	1.08	132.32	60.47	-	104.83
1990	73.10	1.13	131.72	75.32	1.15	136.20	68.25	-	118.09
1991	74.03	1.13	133.72	76.56	1.19	138.74	67.39	-	117.38
1992	72.97	1.04	131.94	74.75	1.02	135.78	71.32	-	123.52
1993	71.28	1.08	129.11	73.16	1.04	133.14	68.82	-	119.44
1994	72.01	1.13	130.83	74.25	1.08	135.62	70.41	-	122.13
1995	72.77	0.99	132.46	75.08	0.94	137.51	71.63	-	123.76
1996	73.25	1.32	133.49	75.28	1.33	138.02	71.22	-	123.51
1997	75.48	1.14	137.75	77.59	1.12	142.60	72.19	-	124.80
1998	77.18	1.07	141.12	79.65	1.13	146.62	70.50	-	122.84
1999	76.95	1.03	141.00	79.41	1.02	146.70	72.24	2.24	124.83
2000	74.18	1.19	136.13	77.14	1.16	142.79	67.41	2.94	116.00
2001	75.10	1.21	137.91	77.79	1.21	144.14	65.79	1.55	113.94
2002	73.01	1.16	134.57	75.30	1.13	140.12	69.92	2.06	121.07
2003	68.06	1.31	125.46	69.93	1.34	130.15	70.02	1.60	121.54
2004	68.13	1.21	125.89	69.60	1.25	129.85	69.28	1.57	120.34
2005	67.02	1.15	124.10	68.83	1.25	128.75	65.80	-	114.44
2006	66.41	1.27	123.04	67.62	1.34	126.61	68.51	1.48	119.22
1975-2006	68.58	1.09	124.60	70.51	1.09	128.61	64.76	1.60	112.63

^a SEER 9 areas (San Francisco, Connecticut, Detroit, Hawaii, Iowa, New Mexico, Seattle, Utah, and Atlanta). Rates are per 100,000 and are age-adjusted to the 2000 US Std Population (19 age groups - Census P25-1130).
- Statistic not shown. Rate based on less than 16 cases for the time interval.

Table 4.6
Cancer of the Breast (Invasive)

Age-adjusted U.S. Death^a Rates by Year, Race and Sex

Year of Death:	All Races			Whites			Blacks		
	Total	Males	Females	Total	Males	Females	Total	Males	Females
1975	17.83	0.37	31.45	18.03	0.38	31.79	16.82	0.41	29.49
1976	18.06	0.38	31.80	18.25	0.36	32.17	17.61	0.60	30.47
1977	18.47	0.36	32.48	18.56	0.35	32.67	18.90	0.51	32.80
1978	18.05	0.36	31.73	18.12	0.35	31.90	18.63	0.60	32.14
1979	17.74	0.28	31.21	17.87	0.26	31.48	17.87	0.54	30.82
1980	18.04	0.30	31.68	18.15	0.30	31.93	18.37	0.42	31.68
1981	18.20	0.32	31.92	18.28	0.31	32.12	18.95	0.46	32.55
1982	18.39	0.33	32.19	18.42	0.32	32.31	19.68	0.56	33.75
1983	18.33	0.31	32.07	18.36	0.29	32.20	19.57	0.50	33.53
1984	18.79	0.29	32.90	18.76	0.28	32.90	20.97	0.47	35.94
1985	18.84	0.34	32.98	18.88	0.34	33.11	20.35	0.43	34.85
1986	18.76	0.28	32.87	18.76	0.27	32.93	20.69	0.42	35.44
1987	18.66	0.34	32.66	18.57	0.34	32.57	21.53	0.47	36.73
1988	18.98	0.33	33.20	18.85	0.28	33.09	22.35	0.88	37.78
1989	19.00	0.33	33.23	18.95	0.33	33.23	21.56	0.45	36.61
1990	18.93	0.28	33.14	18.79	0.26	33.02	22.49	0.52	38.00
1991	18.66	0.28	32.69	18.46	0.27	32.45	22.62	0.44	38.28
1992	18.07	0.31	31.64	17.89	0.30	31.43	21.88	0.45	37.09
1993	17.98	0.36	31.39	17.74	0.34	31.09	22.62	0.66	38.04
1994	17.67	0.35	30.92	17.40	0.34	30.56	22.44	0.60	37.74
1995	17.44	0.35	30.55	17.11	0.32	30.09	22.70	0.77	38.18
1996	16.83	0.34	29.49	16.52	0.31	29.05	22.09	0.72	37.13
1997	16.07	0.32	28.21	15.67	0.30	27.62	22.25	0.63	37.43
1998	15.67	0.32	27.54	15.32	0.31	27.01	21.08	0.56	35.53
1999	15.18	0.34	26.61	14.77	0.32	25.98	20.93	0.69	35.21
2000	15.18	0.37	26.63	14.85	0.35	26.17	20.47	0.63	34.36
2001	14.74	0.35	25.98	14.34	0.33	25.39	20.50	0.65	34.52
2002	14.48	0.31	25.56	14.07	0.28	24.95	20.28	0.60	34.12
2003	14.23	0.31	25.19	13.81	0.30	24.56	20.19	0.46	34.06
2004	13.74	0.29	24.40	13.36	0.27	23.82	19.09	0.54	32.29
2005	13.52	0.29	24.03	13.08	0.28	23.36	19.37	0.50	32.83
2006	13.16	0.29	23.45	12.78	0.28	22.89	18.73	0.47	31.65
1975-2006	16.89	0.32	29.70	16.75	0.31	29.54	20.50	0.56	34.81

^a US Mortality Files, National Center for Health Statistics, Centers for Disease Control and Prevention.
Rates are per 100,000 and are age-adjusted to the 2000 US Std Population (19 age groups - Census P25-1130).
- Statistic not shown. Rate based on less than 16 cases for the time interval.

Table 4.7
Cancer of the Female Breast (Invasive)

Age-adjusted SEER Incidence^a Rates by Year, Race and Age

	All Races, Females			White Females			Black Females		
	All	<50	50+	All	<50	50+	All	<50	50+
Year of Diagnosis:									
1975	105.06	40.61	273.82	107.32	40.71	281.77	93.56	42.59	227.04
1976	101.90	40.04	263.90	104.80	40.85	272.27	85.34	37.82	209.77
1977	100.82	39.12	262.40	103.43	39.40	271.08	87.03	37.62	216.41
1978	100.61	38.85	262.34	103.61	39.29	272.02	86.09	40.24	206.14
1979	102.08	37.97	269.95	104.78	38.63	278.00	86.85	37.78	215.34
1980	102.19	37.76	270.92	105.09	38.28	280.03	89.35	37.61	224.82
1981	106.29	39.19	282.02	109.89	40.12	292.60	94.24	38.86	239.26
1982	106.45	40.54	279.04	109.97	41.29	289.82	93.66	38.11	239.13
1983	111.14	40.24	296.79	114.55	40.92	307.37	103.35	41.24	266.00
1984	115.96	42.35	308.70	119.93	43.13	321.04	102.29	44.76	252.92
1985	124.18	44.35	333.24	127.89	44.56	346.11	111.49	45.45	284.41
1986	126.79	44.43	342.46	130.42	45.24	353.46	114.95	45.49	296.84
1987	134.45	45.49	367.41	140.31	46.55	385.82	109.33	43.13	282.66
1988	131.27	44.01	359.75	136.36	45.09	375.36	118.57	42.95	316.57
1989	127.13	43.36	346.48	132.32	44.46	362.42	104.83	42.16	268.93
1990	131.72	45.56	357.35	136.20	45.38	374.03	118.09	48.71	299.77
1991	133.72	47.16	360.39	138.74	47.13	378.63	117.38	50.93	291.39
1992	131.94	43.43	363.71	135.78	43.68	376.95	123.52	46.80	324.43
1993	129.11	42.79	355.14	133.14	43.26	368.48	119.44	45.31	313.55
1994	130.83	42.35	362.50	135.62	42.74	378.86	122.13	47.27	318.15
1995	132.46	43.15	366.34	137.51	43.76	382.99	123.76	45.36	329.03
1996	133.49	43.46	369.26	138.02	43.92	384.42	123.51	44.11	331.44
1997	137.75	43.43	384.75	142.60	44.05	400.68	124.80	44.18	335.91
1998	141.12	45.36	391.88	146.62	45.72	410.81	122.84	46.15	323.67
1999	141.00	43.60	396.05	146.70	44.93	413.21	124.83	43.36	338.18
2000	136.13	43.34	379.11	142.79	43.93	401.69	116.00	43.85	304.94
2001	137.91	43.53	385.08	144.14	44.44	405.22	113.94	39.14	309.80
2002	134.57	42.34	376.08	140.12	43.03	394.35	121.07	40.31	332.56
2003	125.46	42.68	342.22	130.15	43.50	357.07	121.54	42.33	328.97
2004	125.89	43.97	340.40	129.85	43.91	354.90	120.34	45.38	316.63
2005	124.10	42.97	336.52	128.75	43.29	352.56	114.44	43.75	299.54
2006	123.04	42.79	333.19	126.61	43.47	344.32	119.22	42.66	319.69
1975-2006	124.60	42.86	338.67	128.61	43.40	351.77	112.63	43.44	293.81

^a SEER 9 areas (San Francisco, Connecticut, Detroit, Hawaii, Iowa, New Mexico, Seattle, Utah, and Atlanta). Rates are per 100,000 and are age-adjusted to the 2000 US Std Population (19 age groups - Census P25-1130).
- Statistic not shown. Rate based on less than 16 cases for the time interval.

Table 4.8
Cancer of the Female Breast (Invasive)
Age-adjusted U.S. Death^a Rates by Year, Race and Age

Year of Death:	All Races, Females			White Females			Black Females		
	All	<50	50+	All	<50	50+	All	<50	50+
1975	31.45	9.11	89.94	31.79	9.01	91.42	29.49	10.68	78.75
1976	31.80	8.74	92.21	32.17	8.64	93.80	30.47	10.22	83.50
1977	32.48	8.86	94.34	32.67	8.75	95.32	32.80	10.52	91.13
1978	31.73	8.69	92.08	31.90	8.46	93.29	32.14	11.37	86.53
1979	31.21	8.58	90.47	31.48	8.34	92.07	30.82	11.36	81.78
1980	31.68	8.57	92.22	31.93	8.39	93.56	31.68	10.82	86.31
1981	31.92	8.46	93.33	32.12	8.20	94.77	32.55	11.48	87.74
1982	32.19	8.42	94.43	32.31	8.19	95.46	33.75	11.19	92.83
1983	32.07	8.16	94.70	32.20	7.89	95.85	33.53	11.17	92.10
1984	32.90	8.58	96.57	32.90	8.22	97.55	35.94	12.55	97.21
1985	32.98	8.56	96.90	33.11	8.30	98.09	34.85	12.04	94.58
1986	32.87	8.64	96.32	32.93	8.26	97.53	35.44	12.86	94.58
1987	32.66	8.44	96.08	32.57	7.99	96.93	36.73	12.94	99.04
1988	33.20	8.39	98.18	33.09	8.01	98.78	37.78	12.71	103.42
1989	33.23	8.42	98.22	33.23	8.06	99.16	36.61	12.41	99.96
1990	33.14	8.32	98.14	33.02	7.99	98.55	38.00	11.99	106.13
1991	32.69	8.16	96.91	32.45	7.73	97.15	38.28	12.31	106.29
1992	31.64	7.77	94.15	31.43	7.37	94.45	37.09	12.03	102.73
1993	31.39	7.41	94.18	31.09	6.99	94.20	38.04	11.65	107.14
1994	30.92	7.37	92.58	30.56	6.92	92.47	37.74	11.70	105.91
1995	30.55	7.29	91.46	30.09	6.80	91.07	38.18	11.71	107.49
1996	29.49	6.95	88.53	29.05	6.40	88.35	37.13	11.74	103.61
1997	28.21	6.71	84.53	27.62	6.22	83.64	37.43	11.03	106.56
1998	27.54	6.34	83.05	27.01	5.82	82.50	35.53	10.65	100.68
1999	26.61	5.75	81.22	25.98	5.20	80.40	35.21	10.27	100.52
2000	26.63	5.89	80.96	26.17	5.37	80.61	34.36	9.94	98.30
2001	25.98	5.86	78.66	25.39	5.35	77.86	34.52	9.86	99.07
2002	25.56	5.63	77.75	24.95	5.05	77.05	34.12	10.04	97.17
2003	25.19	5.57	76.56	24.56	5.06	75.60	34.06	9.66	97.96
2004	24.40	5.20	74.67	23.82	4.65	74.03	32.29	9.30	92.49
2005	24.03	5.19	73.37	23.36	4.62	72.42	32.83	9.53	93.86
2006	23.45	5.04	71.64	22.89	4.55	70.90	31.65	8.96	91.08
1975-2006	29.70	7.20	88.60	29.54	6.83	89.00	34.81	10.98	97.22

^a US Mortality Files, National Center for Health Statistics, Centers for Disease Control and Prevention.
Rates are per 100,000 and are age-adjusted to the 2000 US Std Population (19 age groups - Census P25-1130).
- Statistic not shown. Rate based on less than 16 cases for the time interval.

Table 4.9
Cancer of the Female Breast (*In Situ*)

Age-adjusted SEER Incidence^a Rates by Year, Race and Age

Year of Diagnosis:	All Races, Females			White Females			Black Females		
	All	<50	50+	All	<50	50+	All	<50	50+
1975	5.83	3.78	11.19	5.89	3.81	11.32	3.94	-	8.31
1976	5.28	2.72	11.98	5.38	2.91	11.83	3.28	-	9.40
1977	4.26	2.56	8.71	4.33	2.59	8.89	3.03	-	-
1978	4.40	2.36	9.74	4.55	2.50	9.91	3.29	-	-
1979	4.58	2.81	9.22	4.67	2.87	9.38	4.78	-	9.55
1980	4.83	2.98	9.67	5.03	3.07	10.17	3.56	-	-
1981	4.96	2.64	11.05	4.95	2.54	11.26	4.08	-	8.72
1982	5.30	2.73	12.03	5.34	2.71	12.24	5.55	2.73	12.94
1983	6.09	3.03	14.09	6.22	3.03	14.57	5.41	-	13.20
1984	8.62	4.79	18.66	9.16	5.16	19.61	6.35	2.37	16.77
1985	11.53	5.93	26.19	12.10	6.27	27.38	8.21	3.49	20.57
1986	13.63	6.78	31.55	14.29	7.23	32.77	9.32	5.12	20.32
1987	17.38	7.83	42.39	18.21	8.24	44.33	12.30	5.64	29.73
1988	17.57	8.18	42.15	18.11	8.52	43.23	16.08	7.38	38.85
1989	16.52	7.02	41.41	17.08	7.27	42.76	14.53	5.52	38.14
1990	19.14	8.40	47.27	19.95	8.77	49.22	15.06	5.54	40.01
1991	19.78	8.77	48.61	20.45	8.87	50.80	15.31	7.29	36.29
1992	21.41	8.99	53.92	22.18	9.25	56.04	19.09	6.83	51.21
1993	20.70	8.36	53.03	21.35	8.78	54.26	16.51	6.06	43.87
1994	22.31	8.75	57.80	22.91	9.05	59.18	20.14	7.47	53.32
1995	24.69	9.63	64.14	25.06	9.98	64.55	22.64	6.39	65.19
1996	25.36	9.83	66.05	25.91	9.79	68.12	22.48	7.78	61.00
1997	28.31	11.05	73.51	28.97	11.25	75.39	28.08	11.40	71.77
1998	32.76	11.97	87.19	33.74	12.31	89.84	30.42	10.77	81.85
1999	32.74	11.97	87.11	33.17	12.22	88.00	29.58	10.39	79.83
2000	32.78	11.75	87.84	33.80	12.49	89.62	29.50	8.04	85.72
2001	33.58	11.52	91.34	34.10	11.95	92.11	31.57	8.94	90.82
2002	33.81	11.77	91.52	34.29	12.16	92.24	28.34	8.55	80.17
2003	32.14	11.84	85.31	33.07	12.34	87.34	29.52	9.16	82.83
2004	32.71	12.54	85.53	33.46	12.77	87.62	29.98	9.69	83.10
2005	32.12	12.18	84.33	33.00	12.67	86.23	31.03	9.70	86.91
2006	32.48	13.38	82.48	32.69	13.82	82.10	34.71	11.06	96.62
1975-2006	20.62	8.66	51.93	20.74	8.82	51.96	19.39	7.10	51.55

^a SEER 9 areas (San Francisco, Connecticut, Detroit, Hawaii, Iowa, New Mexico, Seattle, Utah, and Atlanta). Rates are per 100,000 and are age-adjusted to the 2000 US Std Population (19 age groups - Census P25-1130).
- Statistic not shown. Rate based on less than 16 cases for the time interval.

Table 4.10
Cancer of the Breast (Invasive)SEER Incidence^a and U.S. Death^b Rates, Age-Adjusted and Age-Specific Rates, by Race and Sex

	All Races			Whites			Blacks		
	Total	Males	Females	Total	Males	Females	Total	Males	Females
<u>SEER Incidence</u>									
<u>Age at Diagnosis</u>									
Age-Adjusted Rates, 2002-2006									
All ages	67.1	1.2	123.8	68.7	1.2	127.8	67.4	1.6	117.7
Under 65	42.3	0.4	82.7	42.7	0.4	84.4	44.2	0.8	81.4
65 and over	238.4	6.0	408.2	248.6	6.3	428.2	228.0	7.5	368.5
All ages (IARC world std) ^c	47.5	0.7	89.5	48.5	0.7	92.3	48.1	1.1	85.7
Age-Specific Rates, 2002-2006									
<1	-	-	-	-	-	-	-	-	-
1-4	-	-	-	-	-	-	-	-	-
5-9	-	-	-	-	-	-	-	-	-
10-14	-	-	-	-	-	-	-	-	-
15-19	0.1	-	0.2	0.1	-	0.2	-	-	-
20-24	0.7	-	1.4	0.6	-	1.3	1.0	-	1.9
25-29	4.0	-	8.1	3.7	-	7.8	5.8	-	11.2
30-34	12.6	-	25.6	12.3	-	25.3	16.0	-	30.4
35-39	29.0	0.1	58.5	28.4	-	58.0	33.8	-	64.4
40-44	59.4	0.4	118.4	59.1	0.3	119.3	63.2	-	119.9
45-49	94.0	0.7	185.3	94.2	0.7	188.1	95.4	-	178.7
50-54	117.3	1.1	229.0	118.7	1.1	234.7	121.8	1.6	224.1
55-59	149.4	2.0	288.5	151.7	1.9	296.1	156.1	3.6	282.7
60-64	185.3	3.2	351.9	191.3	3.2	366.8	181.6	5.9	321.4
65-69	213.2	4.3	394.4	223.1	4.7	416.5	201.5	4.6	351.2
70-74	232.7	5.2	415.4	241.8	5.2	435.9	227.8	7.7	382.3
75-79	260.1	6.2	441.9	272.6	6.3	465.7	242.8	8.5	387.6
80-84	266.5	8.1	428.7	278.4	8.2	447.9	246.3	-	376.7
85+	235.9	9.0	342.1	242.9	9.6	350.5	240.4	-	335.8
<u>U.S. Mortality</u>									
<u>Age at Death</u>									
Age-Adjusted Rates, 2002-2006									
All ages	13.8	0.3	24.5	13.4	0.3	23.9	19.5	0.5	33.0
Under 65	6.5	0.1	12.5	6.0	0.1	11.8	10.8	0.2	19.8
65 and over	64.7	1.7	107.3	64.6	1.7	107.9	79.4	2.7	123.9
All ages (IARC world std) ^c	8.7	0.2	16.0	8.4	0.2	15.5	12.9	0.3	22.5
Age-Specific Rates, 2002-2006									
<1	-	-	-	-	-	-	-	-	-
1-4	-	-	-	-	-	-	-	-	-
5-9	-	-	-	-	-	-	-	-	-
10-14	-	-	-	-	-	-	-	-	-
15-19	-	-	-	-	-	-	-	-	-
20-24	0.1	-	0.1	0.0	-	0.1	0.1	-	0.2
25-29	0.3	-	0.7	0.3	-	0.5	0.9	-	1.6
30-34	1.6	-	3.2	1.4	-	2.8	3.3	-	6.3
35-39	4.0	-	8.0	3.5	-	7.0	7.9	-	14.9
40-44	7.5	0.1	14.8	6.7	0.0	13.4	13.9	-	25.9
45-49	12.1	0.1	23.8	10.9	0.1	21.6	22.2	0.3	41.3
50-54	18.5	0.3	35.9	17.1	0.3	33.6	30.9	0.6	56.6
55-59	25.7	0.4	49.5	24.4	0.4	47.5	41.5	0.8	75.0
60-64	33.3	0.7	63.0	32.3	0.6	61.7	47.8	1.3	84.0
65-69	39.7	0.9	73.5	39.3	0.8	73.3	52.7	1.9	90.4
70-74	50.0	1.3	89.2	49.8	1.3	89.8	63.1	2.4	104.3
75-79	64.8	1.8	110.0	65.0	1.8	111.2	77.7	2.8	122.4
80-84	85.0	2.5	135.7	85.3	2.5	136.7	102.0	3.0	153.9
85+	126.4	3.2	181.6	126.8	3.2	182.4	149.0	4.7	206.1

^a SEER 17 areas. Rates are per 100,000 and are age-adjusted to the 2000 US Std Population (19 age groups - Census P25-1130), unless noted.^b US Mortality Files, National Center for Health Statistics, Centers for Disease Control and Prevention.^c Rates are per 100,000 and are age-adjusted to the 2000 US Std Population (19 age groups - Census P25-1130), unless noted.

- Rates are per 100,000 and are age-adjusted to the IARC world standard population.

- Statistic not shown. Rate based on less than 16 cases for the time interval.

Table 4.11
Cancer of the Female Breast (*In Situ*)

SEER Incidence^a Rates, Age-Adjusted and Age-Specific Rates, by Race

	All Races, Females	White Females	Black Females
<u>Age-Adjusted Rates, 2002-2006</u>			
Age at Diagnosis:			
All ages	29.6	30.3	26.6
Under 65	22.2	22.7	18.4
65 and over	81.4	83.0	82.7
All ages (IARC world std) ^b	22.4	22.9	19.8
<u>Age-Specific Rates, 2002-2006</u>			
Age at Diagnosis:			
<1	-	-	-
1-4	-	-	-
5-9	-	-	-
10-14	-	-	-
15-19	-	-	-
20-24	0.2	0.2	-
25-29	0.8	0.8	-
30-34	2.5	2.3	2.6
35-39	9.7	10.0	9.1
40-44	34.8	35.7	24.3
45-49	57.0	59.1	41.6
50-54	67.4	69.1	54.4
55-59	78.6	80.1	74.8
60-64	86.1	88.0	79.7
65-69	96.9	98.6	96.6
70-74	91.5	93.7	93.7
75-79	86.9	88.7	89.5
80-84	66.7	68.2	61.8
85+	34.0	33.6	41.7

^a SEER 17 areas. Rates are per 100,000 and are age-adjusted to the 2000 US Std Population (19 age groups - Census P25-1130), unless noted.

^b Rates are per 100,000 and are age-adjusted to the IARC world standard population.

- Statistic not shown. Rate based on less than 16 cases for the time interval.

Table 4.12
Cancer of the Female Breast (Invasive)

Survival Rates, by Race, Diagnosis Year, Stage and Age

	All Races, Females			White Females			Black Females		
	All	<50	50+	All	<50	50+	All	<50	50+
5-Year Relative Survival Rates									
Year of Diagnosis:									
1960-1963 ^a	-	-	-	63	-	-	46	-	-
1970-1973 ^a	-	-	-	68	-	-	51	-	-
1975-1977 ^b	75.1	76.7	74.5	75.9	77.9	75.2	62.2	62.3	62.1
1978-1980 ^b	74.9	75.6	74.7	75.6	76.3	75.4	63.9	67.1	62.1
1981-1983 ^b	76.7	77.5	76.5	77.7	78.7	77.4	64.0	65.3	63.4
1984-1986 ^b	79.3	78.0	79.8	80.4	79.7	80.7	65.3	64.0	66.0
1987-1989 ^b	84.3	81.5	85.2	85.4	82.9	86.2	71.3	69.6	72.2
1990-1992 ^b	85.5	83.4	86.3	86.7	85.2	87.3	71.8	70.3	72.8
1993-1995 ^b	86.6	84.3	87.5	88.0	86.3	88.6	72.9	70.1	74.6
1996-1998 ^b	88.5	86.6	89.2	89.6	88.3	90.1	76.5	74.0	78.1
1999-2005 ^b	90.1 ^e	88.4 ^e	90.8 ^e	91.3 ^e	90.2 ^e	91.8 ^e	78.9 ^e	76.7 ^e	80.2 ^e
5-Year Period Survival Rates^{cd}									
Year of Diagnosis:									
1999-2005	89.3	87.8	89.9	90.6	89.4	91.0	77.4	75.7	78.3
Stage Distribution (%) 1999-2005^c									
All Stages									
Number of cases	272,566	68,325	204,241	227,140	53,060	174,080	24,363	8,063	16,300
Percent	100%	100%	100%	100%	100%	100%	100%	100%	100%
Localized	60	53	63	61	54	64	51	46	53
Regional	33	41	30	32	41	29	39	46	35
Distant	5	4	5	4	3	5	8	7	9
Unstaged	2	2	2	2	2	2	3	2	3
5-Year Relative Survival Rates, 1999-2005^c									
Age at Diagnosis:									
Ages <45	85.9	-	-	87.5	-	-	74.5	-	-
Ages 45-54	89.3	-	-	90.7	-	-	78.2	-	-
Ages 55-64	90.2	-	-	91.2	-	-	78.7	-	-
Ages 65-74	90.9	-	-	91.7	-	-	81.8	-	-
Ages 75+	88.8	-	-	89.8	-	-	76.4	-	-
Ages <65	88.9	-	-	90.2	-	-	77.3	-	-
Ages 65+	90.0	-	-	90.9	-	-	79.8	-	-
Stage:									
All Stages	89.1	87.6	89.8	90.3	89.1	90.8	77.9	76.2	78.9
Localized	98.3	96.0	99.1	98.8	96.5	99.6	93.8	91.6	94.9
Regional	83.5	82.9	83.8	84.8	84.6	85.0	72.1	71.3	72.6
Distant	23.3	28.8	21.7	24.7	33.2	22.5	16.0	15.0	16.4
Unstaged	57.7	72.3	52.9	58.7	76.7	53.5	44.8	49.7	42.2
<i>In Situ</i> ^h	100.0	100.0	100.0	100.0	100.0	100.0	100.0	99.6	100.0

^a Rates are based on End Results data from a series of hospital registries and one population-based registry.

^b Rates are from the SEER 9 areas (San Francisco, Connecticut, Detroit, Hawaii, Iowa, New Mexico, Seattle, Utah, Atlanta).

Rates are based on follow-up of patients into 2006.

^c Rates are from the SEER 17 areas (San Francisco, Connecticut, Detroit, Hawaii, Iowa, New Mexico, Seattle, Utah, Atlanta, San Jose-Monterey, Los Angeles, Alaska Native Registry, Rural Georgia, California excluding SF/SJM/LA, Kentucky, Louisiana and New Jersey). California excluding SF/SJM/LA, Kentucky, Louisiana, and New Jersey contribute cases for diagnosis years 2000-2005. The remaining 13 SEER Areas contribute cases for the entire period 1999-2005. Rates are based on follow-up of patients into 2006.

^d Period survival provides a more up-to-date estimate of survival by piecing together the most recent conditional survival estimates from several cohorts. It is computed here using three year calendar blocks (2003-2005: 0-1 year survival), (2002-2004: 1-2 year survival), (2001-2003: 2-3 year survival), (2000-2002: 3-4 year survival), (1999-2001: 4-5 years survival).

^e The difference in rates between 1975-1977 and 1999-2005 is statistically significant ($p < .05$).

^f The standard error of the survival rate is between 5 and 10 percentage points.

^g The standard error of the survival rate is greater than 10 percentage points.

^h *In situ* cases are not included in the All Stages group.

- Statistic could not be calculated due to fewer than 25 cases during the time period.

Table 4.13
Cancer of the Female Breast (Invasive)

Survival Rates^a
By Year of Diagnosis

All Races, Females

Year of Diagnosis

	1975- 1979	1980- 1984	1985- 1989	1990	1991	1992	1993	1994	1995	1996	1997	1998	1999	2000	2001	2002	2003	2004	2005
Relative Survival Rates (SEER ^b)																			
1-year	94.7	95.5	96.6	97.0	97.4	97.4	97.2	97.6	97.3	97.2	97.6	97.7	97.7	97.7	97.5	97.7	98.0	98.0	98.0
2-year	88.9	90.5	92.6	93.4	93.9	94.5	94.2	94.4	94.2	94.0	94.6	95.1	95.4	95.6	95.3	95.8	95.8	95.9	
3-year	83.4	85.1	88.6	89.9	90.3	91.2	91.1	91.2	91.6	91.2	92.2	93.1	93.3	93.7	93.1	93.9	93.6		
4-year	78.7	80.7	85.3	87.0	87.8	88.3	88.3	88.8	89.0	89.2	90.1	91.3	91.5	91.9	91.3	92.3			
5-year	74.9	76.9	82.5	84.9	85.5	86.0	86.0	86.9	87.0	87.0	88.6	89.7	89.8	90.6	89.8				
6-year	71.8	73.9	80.1	82.7	83.6	84.3	84.1	85.3	85.6	85.3	87.2	88.6	88.3	89.4					
7-year	69.1	71.1	78.1	80.8	81.9	82.7	82.4	83.8	84.0	84.2	86.1	87.4	87.4						
8-year	66.9	68.9	76.6	79.5	80.3	81.8	80.8	83.1	82.8	82.8	85.2	86.1							
9-year	64.7	66.9	74.9	78.2	79.0	80.8	79.8	81.8	81.5	81.8	84.0								
10-year	63.0	65.0	73.6	77.1	77.9	79.8	78.8	80.7	80.7	80.8									
11-year	61.3	63.2	72.3	76.0	77.2	78.8	77.5	79.3	79.6										
12-year	59.8	62.0	71.1	75.1	76.0	77.8	77.0	78.3											
13-year	58.6	61.0	70.1	74.0	75.1	76.8	76.2												
14-year	57.7	59.7	69.2	72.9	74.4	76.2													
15-year	56.6	58.9	68.3	71.8	73.7														
16-year	55.7	57.9	67.5	70.7															
17-year	54.9	57.0	66.7																
18-year	54.2	56.3																	
19-year	53.4	55.7																	
20-year	52.8	55.0																	

^a

Survival rates are relative rates expressed as percents.

^b

Rates are from the SEER 9 areas (San Francisco, Connecticut, Detroit, Hawaii, Iowa, New Mexico, Seattle, Utah, and Atlanta).

Table 4.14
Cancer of the Female Breast (Ages <50, Invasive)

Survival Rates^a
By Year of Diagnosis

All Races, Females

Year of Diagnosis

	1975- 1979	1980- 1984	1985- 1989	1990	1991	1992	1993	1994	1995	1996	1997	1998	1999	2000	2001	2002	2003	2004	2005
Relative Survival Rates (SEER ^b)																			
1-year	96.8	97.6	98.0	97.6	98.5	98.4	98.0	98.4	98.0	97.8	98.1	98.4	98.7	98.5	98.4	98.6	98.9	98.6	98.8
2-year	91.0	91.5	92.8	93.1	93.9	94.7	94.3	93.6	93.7	93.8	94.8	95.2	95.2	95.7	94.9	95.8	96.1	95.9	
3-year	84.7	85.7	87.5	88.5	90.1	90.9	90.3	89.4	90.0	90.7	91.8	92.3	92.2	93.1	91.5	93.3	93.6		
4-year	80.1	81.1	83.5	85.1	86.9	86.5	87.2	86.2	86.7	88.2	88.8	89.5	90.0	90.5	89.1	90.6			
5-year	76.2	77.2	80.3	82.4	84.0	83.9	84.8	84.0	84.2	85.5	86.9	87.4	88.1	88.9	87.1				
6-year	73.4	74.2	77.9	80.1	81.8	81.7	83.0	82.0	82.3	83.2	84.8	85.4	86.1	87.3					
7-year	70.9	71.6	75.8	78.6	79.6	80.3	81.3	80.3	80.3	81.6	83.2	83.7	84.7						
8-year	69.0	69.5	74.2	76.6	78.2	78.6	79.6	79.0	78.7	80.0	81.5	82.3							
9-year	67.1	67.7	72.6	75.4	77.3	77.6	78.5	77.5	77.6	78.9	80.5								
10-year	65.5	66.3	71.4	74.3	76.3	76.8	77.3	76.5	76.3	77.5									
11-year	64.2	64.9	70.4	73.3	75.3	75.7	76.6	75.6	75.4										
12-year	62.8	64.0	69.3	72.4	73.9	75.1	76.0	74.2											
13-year	61.7	62.9	68.3	71.3	73.1	74.0	75.2												
14-year	61.0	61.8	67.6	70.8	72.4	73.4													
15-year	60.2	61.0	66.8	70.1	71.7														
16-year	59.5	60.3	66.1	69.7															
17-year	58.9	59.6	65.5																
18-year	58.3	59.0																	
19-year	57.7	58.5																	
20-year	57.0	57.9																	

^a

^b

Survival rates are relative rates expressed as percents.

Rates are from the SEER 9 areas (San Francisco, Connecticut, Detroit, Hawaii, Iowa, New Mexico, Seattle, Utah, and Atlanta).

Table 4.15
Cancer of the Female Breast (Ages 50+, Invasive)

Survival Rates^a
By Year of Diagnosis

All Races, Females

Year of Diagnosis

	1975- 1979	1980- 1984	1985- 1989	1990	1991	1992	1993	1994	1995	1996	1997	1998	1999	2000	2001	2002	2003	2004	2005
Relative Survival Rates (SEER ^b)																			
1-year	94.0	94.9	96.1	96.8	97.0	97.1	96.9	97.3	97.1	97.0	97.4	97.4	97.3	97.5	97.3	97.5	97.7	97.8	97.6
2-year	88.3	90.1	92.6	93.5	93.9	94.4	94.1	94.7	94.3	94.0	94.5	95.1	95.4	95.6	95.5	95.8	95.7	95.9	
3-year	83.0	84.9	89.0	90.4	90.3	91.3	91.3	91.9	92.1	91.3	92.4	93.5	93.7	93.9	93.6	94.1	93.6		
4-year	78.2	80.6	86.0	87.8	88.1	89.0	88.8	89.8	89.9	89.6	90.6	91.9	92.0	92.4	92.1	92.8			
5-year	74.4	76.8	83.3	85.8	86.1	86.9	86.5	87.9	88.1	87.6	89.3	90.6	90.5	91.3	90.8				
6-year	71.2	73.8	80.9	83.8	84.4	85.3	84.5	86.6	87.0	86.2	88.1	89.8	89.2	90.3					
7-year	68.4	71.0	79.0	81.8	82.9	83.7	82.9	85.3	85.6	85.3	87.2	88.9	88.4						
8-year	66.0	68.6	77.5	80.8	81.3	83.1	81.4	84.8	84.5	84.1	86.8	87.7							
9-year	63.8	66.6	75.8	79.4	79.8	82.2	80.4	83.8	83.4	83.2	85.6								
10-year	61.9	64.5	74.5	78.4	78.7	81.3	79.5	82.6	82.9	82.4									
11-year	60.1	62.5	73.2	77.4	78.2	80.3	78.0	81.1	81.7										
12-year	58.4	61.3	72.0	76.5	77.1	79.2	77.6	80.4											
13-year	57.2	60.2	71.0	75.5	76.3	78.4	76.9												
14-year	56.1	58.8	70.1	74.3	75.6	77.8													
15-year	54.9	58.0	69.1	72.9	75.0														
16-year	53.8	56.7	68.3	71.5															
17-year	52.7	55.7	67.5																
18-year	51.9	54.9																	
19-year	50.9	54.2																	
20-year	50.3	53.4																	

^a

Survival rates are relative rates expressed as percents.

^b

Rates are from the SEER 9 areas (San Francisco, Connecticut, Detroit, Hawaii, Iowa, New Mexico, Seattle, Utah, and Atlanta).

Table 4.16
Cancer of the Female Breast (Invasive)

Risk of Being Diagnosed With Cancer in 10, 20 and 30 Years,
Lifetime Risk of Being Diagnosed with Cancer Given Alive and Cancer-Free at Current Age, and
Lifetime Risk of Dying from Cancer Given Alive at Current Age
Females, 2004-2006 By Race/Ethnicity

Race/ Ethnicity	Current Age	Risk of Being Diagnosed with Cancer					Risk of Dying from Cancer	
		+10 yrs Percent (95% C.I.)	+20 yrs Percent (95% C.I.)	+30 yrs Percent (95% C.I.)	Eventually Percent (95% C.I.)	Eventually Percent (95% C.I.)		
All Races	0	0.00 (0.00, 0.00)	0.00 (0.00, 0.00)	0.06 (0.05, 0.06)	12.08 (12.01, 12.15)	2.84 (2.82, 2.85)		
	10	0.00 (0.00, 0.00)	0.06 (0.06, 0.06)	0.49 (0.48, 0.50)	12.21 (12.14, 12.28)	2.87 (2.86, 2.89)		
	20	0.06 (0.05, 0.06)	0.49 (0.48, 0.50)	1.91 (1.89, 1.93)	12.24 (12.17, 12.31)	2.88 (2.86, 2.90)		
	30	0.44 (0.43, 0.45)	1.86 (1.84, 1.88)	4.15 (4.12, 4.18)	12.25 (12.18, 12.32)	2.89 (2.87, 2.91)		
	40	1.44 (1.43, 1.46)	3.75 (3.73, 3.78)	6.83 (6.79, 6.88)	11.96 (11.89, 12.03)	2.86 (2.84, 2.88)		
	50	2.39 (2.37, 2.41)	5.57 (5.53, 5.62)	8.62 (8.56, 8.67)	10.87 (10.81, 10.94)	2.73 (2.71, 2.75)		
	60	3.40 (3.37, 3.44)	6.65 (6.60, 6.70)	8.59 (8.53, 8.65)	9.06 (9.00, 9.13)	2.44 (2.42, 2.45)		
	70	3.73 (3.69, 3.77)	5.96 (5.90, 6.02)	- (- , -)	6.50 (6.44, 6.56)	2.01 (2.00, 2.03)		
80	3.04 (3.00, 3.08)	- (- , -)	- (- , -)	3.78 (3.72, 3.83)	1.53 (1.52, 1.55)			
White	0	0.00 (0.00, 0.00)	0.00 (0.00, 0.00)	0.06 (0.05, 0.06)	12.54 (12.46, 12.61)	2.82 (2.81, 2.84)		
	10	0.00 (0.00, 0.00)	0.06 (0.05, 0.06)	0.49 (0.47, 0.50)	12.66 (12.58, 12.73)	2.85 (2.84, 2.87)		
	20	0.05 (0.05, 0.06)	0.49 (0.47, 0.50)	1.92 (1.90, 1.95)	12.68 (12.61, 12.76)	2.86 (2.84, 2.88)		
	30	0.43 (0.42, 0.44)	1.88 (1.86, 1.90)	4.23 (4.19, 4.26)	12.70 (12.62, 12.77)	2.87 (2.85, 2.89)		
	40	1.46 (1.44, 1.48)	3.84 (3.81, 3.87)	7.07 (7.02, 7.12)	12.41 (12.33, 12.48)	2.85 (2.83, 2.86)		
	50	2.45 (2.43, 2.48)	5.79 (5.74, 5.84)	8.99 (8.93, 9.06)	11.30 (11.23, 11.38)	2.73 (2.71, 2.75)		
	60	3.56 (3.52, 3.60)	6.97 (6.91, 7.03)	8.98 (8.91, 9.05)	9.44 (9.36, 9.51)	2.45 (2.43, 2.47)		
	70	3.92 (3.88, 3.97)	6.22 (6.16, 6.29)	- (- , -)	6.76 (6.69, 6.82)	2.03 (2.01, 2.04)		
80	3.15 (3.11, 3.20)	- (- , -)	- (- , -)	3.88 (3.82, 3.94)	1.53 (1.52, 1.55)			
Black	0	0.00 (0.00, 0.00)	0.00 (0.00, 0.00)	0.07 (0.06, 0.09)	10.07 (9.88, 10.27)	3.20 (3.15, 3.25)		
	10	0.00 (0.00, 0.00)	0.08 (0.07, 0.09)	0.55 (0.52, 0.58)	10.29 (10.09, 10.49)	3.27 (3.22, 3.33)		
	20	0.07 (0.06, 0.08)	0.55 (0.52, 0.58)	1.92 (1.87, 1.98)	10.32 (10.12, 10.52)	3.28 (3.23, 3.34)		
	30	0.48 (0.46, 0.51)	1.87 (1.81, 1.92)	3.96 (3.87, 4.05)	10.33 (10.14, 10.54)	3.30 (3.24, 3.35)		
	40	1.41 (1.36, 1.45)	3.55 (3.46, 3.63)	6.13 (6.00, 6.26)	10.04 (9.85, 10.25)	3.24 (3.19, 3.30)		
	50	2.25 (2.18, 2.32)	4.96 (4.84, 5.09)	7.38 (7.21, 7.55)	9.08 (8.88, 9.29)	3.04 (2.98, 3.09)		
	60	3.00 (2.90, 3.11)	5.67 (5.51, 5.84)	7.12 (6.93, 7.31)	7.56 (7.35, 7.76)	2.62 (2.56, 2.68)		
	70	3.24 (3.10, 3.37)	4.99 (4.81, 5.17)	- (- , -)	5.52 (5.32, 5.72)	2.14 (2.09, 2.20)		
80	2.60 (2.45, 2.76)	- (- , -)	- (- , -)	3.39 (3.20, 3.60)	1.71 (1.65, 1.78)			

Devcan Version 6.4.0, April 2009, National Cancer Institute (<http://srab.cancer.gov/devcan/>).

Source: Incidence data are from the SEER 17 areas (San Francisco, Connecticut, Detroit, Hawaii, Iowa, New Mexico, Seattle, Utah, Atlanta, San Jose-Monterey, Los Angeles, Alaska Native Registry, Rural Georgia, California excluding SF/SJM/LA, Kentucky, Louisiana and New Jersey). Mortality data are from the NCHS public use data file for the total US.

- Statistic could not be calculated.

A percent or confidence interval value of 0.00 represents a value that is below 0.005.

Table 4.16 - continued
Cancer of the Female Breast (Invasive)

Risk of Being Diagnosed With Cancer in 10, 20 and 30 Years,
Lifetime Risk of Being Diagnosed with Cancer Given Alive and Cancer-Free at Current Age, and
Lifetime Risk of Dying from Cancer Given Alive at Current Age
Females, 2004-2006 By Race/Ethnicity

Race/ Ethnicity	Current Age	Risk of Being Diagnosed with Cancer						Risk of Dying from Cancer	
		+10 yrs Percent (95% C.I.)	+20 yrs Percent (95% C.I.)	+30 yrs Percent (95% C.I.)	Eventually Percent (95% C.I.)	Eventually Percent (95% C.I.)			
Asian/ Pacific Islander	0	0.00 (0.00, 0.00)	0.00 (0.00, 0.01)	0.05 (0.04, 0.06)	9.36 (9.13, 9.60)	1.76 (1.64, 1.89)			
	10	0.00 (0.00, 0.01)	0.05 (0.04, 0.06)	0.45 (0.42, 0.47)	9.43 (9.21, 9.68)	1.77 (1.66, 1.91)			
	20	0.05 (0.04, 0.06)	0.45 (0.42, 0.47)	1.74 (1.69, 1.80)	9.45 (9.22, 9.70)	1.78 (1.66, 1.91)			
	30	0.40 (0.37, 0.42)	1.70 (1.64, 1.76)	3.60 (3.51, 3.69)	9.43 (9.20, 9.68)	1.78 (1.66, 1.91)			
	40	1.31 (1.27, 1.36)	3.22 (3.14, 3.31)	5.47 (5.34, 5.60)	9.10 (8.88, 9.35)	1.75 (1.64, 1.89)			
	50	1.95 (1.89, 2.02)	4.25 (4.13, 4.37)	6.29 (6.13, 6.45)	7.97 (7.74, 8.21)	1.65 (1.53, 1.78)			
	60	2.39 (2.30, 2.49)	4.52 (4.37, 4.67)	5.87 (5.69, 6.07)	6.27 (6.05, 6.51)	1.41 (1.29, 1.55)			
	70	2.31 (2.20, 2.42)	3.78 (3.62, 3.95)	- (- , -)	4.21 (4.00, 4.44)	1.12 (1.00, 1.26)			
	80	1.77 (1.64, 1.91)	- (- , -)	- (- , -)	2.29 (2.09, 2.52)	0.84 (0.71, 1.00)			
American Indian/ Alaska Native ^a	0	0.00 (0.00, 0.04)	0.00 (0.00, 0.04)	0.04 (0.02, 0.09)	7.21 (6.50, 8.19)	1.98 (1.74, 2.29)			
	10	0.00 (0.00, 0.02)	0.04 (0.02, 0.08)	0.31 (0.23, 0.41)	7.32 (6.60, 8.32)	2.02 (1.77, 2.33)			
	20	0.04 (0.02, 0.08)	0.31 (0.23, 0.41)	1.24 (1.07, 1.43)	7.36 (6.64, 8.36)	2.03 (1.78, 2.34)			
	30	0.27 (0.20, 0.36)	1.21 (1.04, 1.40)	2.65 (2.37, 2.96)	7.39 (6.66, 8.39)	2.04 (1.80, 2.36)			
	40	0.96 (0.82, 1.12)	2.43 (2.16, 2.72)	4.28 (3.85, 4.75)	7.26 (6.52, 8.28)	2.04 (1.79, 2.36)			
	50	1.53 (1.31, 1.77)	3.45 (3.04, 3.90)	5.24 (4.66, 5.88)	6.54 (5.80, 7.58)	1.97 (1.71, 2.30)			
	60	2.05 (1.72, 2.43)	3.97 (3.42, 4.59)	5.11 (4.42, 5.90)	5.36 (4.62, 6.43)	1.80 (1.54, 2.15)			
	70	2.22 (1.78, 2.74)	3.53 (2.88, 4.30)	- (- , -)	3.83 (3.11, 4.96)	1.57 (1.29, 1.96)			
	80	1.78 (1.23, 2.50)	- (- , -)	- (- , -)	2.17 (1.51, 3.48)	1.32 (1.01, 1.80)			
Hispanic ^b	0	0.00 (0.00, 0.00)	0.00 (0.00, 0.00)	0.05 (0.04, 0.05)	9.29 (9.08, 9.50)	2.06 (1.99, 2.14)			
	10	0.00 (0.00, 0.00)	0.05 (0.04, 0.05)	0.39 (0.37, 0.40)	9.38 (9.17, 9.60)	2.09 (2.01, 2.16)			
	20	0.05 (0.04, 0.05)	0.39 (0.37, 0.40)	1.47 (1.43, 1.50)	9.40 (9.19, 9.62)	2.09 (2.02, 2.17)			
	30	0.34 (0.33, 0.36)	1.42 (1.39, 1.46)	3.16 (3.10, 3.23)	9.39 (9.18, 9.61)	2.09 (2.02, 2.17)			
	40	1.09 (1.06, 1.13)	2.85 (2.78, 2.91)	5.10 (4.99, 5.21)	9.13 (8.92, 9.35)	2.07 (1.99, 2.14)			
	50	1.80 (1.74, 1.85)	4.10 (4.00, 4.21)	6.35 (6.20, 6.50)	8.23 (8.02, 8.46)	1.96 (1.89, 2.04)			
	60	2.42 (2.34, 2.51)	4.79 (4.65, 4.93)	6.20 (6.03, 6.38)	6.77 (6.55, 6.99)	1.73 (1.66, 1.81)			
	70	2.63 (2.52, 2.74)	4.20 (4.04, 4.37)	- (- , -)	4.83 (4.62, 5.05)	1.42 (1.35, 1.51)			
	80	2.01 (1.87, 2.15)	- (- , -)	- (- , -)	2.80 (2.59, 3.04)	1.11 (1.02, 1.20)			

Devcan Version 6.4.0, April 2009, National Cancer Institute (<http://srab.cancer.gov/devcan/>).

Source: Incidence data are from the SEER 17 areas (San Francisco, Connecticut, Detroit, Hawaii, Iowa, New Mexico, Seattle, Utah, Atlanta, San Jose-Monterey, Los Angeles, Alaska Native Registry, Rural Georgia, California excluding SF/SJM/LA, Kentucky, Louisiana and New Jersey). Mortality data are from the NCHS public use data file for the total US.

^a Underlying incidence and mortality data for American Indian/Alaska Native are based on the CHSDA (Contract Health Service Delivery Area) counties.

^b Hispanic is not mutually exclusive from whites, blacks, Asian/Pacific Islanders, and American Indians/Alaska Natives.

Underlying incidence data for Hispanics are based on NHIA and exclude cases from the Alaska Native Registry.

Underlying mortality data for Hispanics exclude deaths from the District of Columbia, Minnesota, New Hampshire and North Dakota.

- Statistic could not be calculated.

A percent or confidence interval value of 0.00 represents a value that is below 0.005.

Table 4.17
Cancer of the Female Breast (Invasive)

SEER Incidence and U.S. Mortality
Age-Adjusted Rates and Trends^a
By Race/Ethnicity

SEER Incidence	SEER 17 Areas ^b	SEER 13 Areas ^b	SEER 9 Areas ^b
	Rate 2002-2006	Trend 1997-2006 ^c	Trend 1997-2006 ^d
	Rate per 100,000 persons	AAPC (%)	AAPC (%)
RACE/ETHNICITY	Females	Females	Females
All Races	123.8	-1.4*	-1.3*
White	127.8	-1.5*	-1.4*
White Hispanic ^e	90.5	-0.1	-
White Non-Hispanic ^e	134.0	-1.5*	-
Black	117.7	-0.2	-0.3
Asian/Pacific Islander	89.5	-0.8*	-
Amer Ind/Alaska Nat ^f	74.4	-0.3	-
Hispanic ^e	88.3	0.0	-
<u>U.S. Mortality^g</u>			
	Rate 2002-2006	Trend 1997-2006 ^h	
	Rate per 100,000 persons	AAPC (%)	
RACE/ETHNICITY	Females	Females	
All Races	24.5	-2.1*	
White	23.9	-2.1*	
White Hispanic ^e	16.0	-2.0*	
White Non-Hispanic ^e	24.5	-1.9*	
Black	33.0	-1.6*	
Asian/Pacific Islander	12.5	-0.6*	
Amer Ind/Alaska Nat			
Total U.S.	14.3	-0.7	
CHSDA Counties	17.6	0.3	
Non-CHSDA Counties	10.2	-2.3*	
Hispanic ^e	15.5	-1.9*	

The AAPC is the Average Annual Percent Change over the time interval. The AAPCs are calculated by the Joinpoint Regression Program Version 3.3, April 2008, National Cancer Institute.

- Statistic not shown. Rate based on less than 16 cases for the time interval.

Trend based on less than 10 cases for at least one year within the time interval.

a Rates are age-adjusted to the 2000 US Std Population (19 age groups - Census P25-1130). Trends

are based on rates age-adjusted to the 2000 US Std Population (19 age groups - Census P25-1130).

b The SEER 9 areas are San Francisco, Connecticut, Detroit, Hawaii, Iowa, New Mexico, Seattle, Utah and Atlanta.

The SEER 13 areas comprise the SEER 9 areas plus San Jose-Monterey, Los Angeles, the Alaska Native Registry and Rural Georgia.

The SEER 17 areas comprise the SEER 13 areas plus California excluding SF/SJM/LA, Kentucky, Louisiana and New Jersey.

c The 1997-2006 AAPC estimates are based on a Joinpoint analysis with up to 2 Joinpoints over diagnosis years 1992-2006.

d The 1997-2006 AAPC estimates are based on a Joinpoint analysis with up to 4 Joinpoints over diagnosis years 1975-2006.

e Hispanic and Non-Hispanic are not mutually exclusive from whites, blacks, Asian/Pacific Islanders, and American Indians/Alaska Natives. Incidence data for Hispanics and Non-Hispanics are based on NHIA and exclude cases from the Alaska Native Registry. The 2002-2006 Hispanic and Non-Hispanic death rates exclude deaths from the District of Columbia, Minnesota, New Hampshire and North Dakota. The 1997-2006 Hispanic and Non-Hispanic mortality trends exclude deaths from Connecticut, the District of Columbia, Maine, Maryland, Minnesota, New Hampshire, New York, North Dakota, Oklahoma and Vermont.

f Incidence data for American Indian/Alaska Native are based on the CHSDA(Contract Health Service Delivery Area) counties.

g US Mortality Files, National Center for Health Statistics, CDC.

h The 1997-2006 mortality AAPCs are based on a Joinpoint analysis using years of death 1992-2006.

* The APC is significantly different from zero (p<.05).

Table 4.18
Cancer of the Female Breast (*In Situ*)

SEER Incidence
Age-Adjusted Rates and Trends^a
By Race/Ethnicity

SEER Incidence	SEER 17 Areas ^b	SEER 13 Areas ^b	SEER 9 Areas ^b
	Rate 2002-2006	Trend 1997-2006 ^c	Trend 1997-2006 ^d
	Rate per 100,000 persons	AAPC (%)	AAPC (%)
RACE/ETHNICITY	Females	Females	Females
All Races	29.6	1.3*	-
White	30.3	1.1*	-
White Hispanic ^e	19.4	2.6*	-
White Non-Hispanic ^e	32.3	1.2*	-
Black	26.6	2.1*	-
Asian/Pacific Islander	25.9	2.7*	-
Amer Ind/Alaska Nat ^f	14.7	-	-
Hispanic ^e	18.9	2.5*	-

The AAPC is the Average Annual Percent Change over the time interval. The AAPCs are calculated by the Joinpoint Regression Program Version 3.3, April 2008, National Cancer Institute.

- Statistic not shown. Rate based on less than 16 cases for the time interval.

Trend based on less than 10 cases for at least one year within the time interval.

^a Rates are age-adjusted to the 2000 US Std Population (19 age groups - Census P25-1130). Trends are based on rates age-adjusted to the 2000 US Std Population (19 age groups - Census P25-1130).

^b The SEER 9 areas are San Francisco, Connecticut, Detroit, Hawaii, Iowa, New Mexico, Seattle, Utah and Atlanta.

The SEER 13 areas comprise the SEER 9 areas plus San Jose-Monterey, Los Angeles, the Alaska Native Registry and Rural Georgia.

The SEER 17 areas comprise the SEER 13 areas plus California excluding SF/SJM/LA, Kentucky, Louisiana and New Jersey.

^c The 1997-2006 AAPC estimates are based on a Joinpoint analysis with up to 2 Joinpoints over diagnosis years 1992-2006.

^d The 1997-2006 AAPC estimates are based on a Joinpoint analysis with up to 4 Joinpoints over diagnosis years 1975-2006.

^e Hispanic and Non-Hispanic are not mutually exclusive from whites, blacks, Asian/Pacific Islanders, and American Indians/Alaska Natives. Incidence data for Hispanics and Non-Hispanics are based on NHIA and exclude cases from the Alaska Native Registry.

^f Incidence data for American Indian/Alaska Native are based on the CHSDA (Contract Health Service Delivery Area) counties.

* The APC is significantly different from zero ($p < .05$).

Table 4.19
Cancer of the Female Breast (Invasive)

Age-Adjusted SEER Incidence Rates^a
By Registry, Race and Age

	All Races			Whites			Blacks		
	All Ages	Ages <50	Ages 50+	All Ages	Ages <50	Ages 50+	All Ages	Ages <50	Ages 50+
<u>SEER Incidence Rates^a, 2002-2006</u>									
Atlanta & Rural Georgia	119.55	41.70	323.44	122.81	40.76	337.67	117.32	43.97	309.42
Atlanta	119.95	41.55	325.23	123.02	40.63	338.76	118.39	43.85	313.57
Rural Georgia	115.88	46.81	296.74	120.20	44.91	317.37	107.54	48.77	261.44
California	122.28	40.06	337.61	128.02	40.24	357.87	118.12	41.55	318.62
Greater Bay Area	125.21	42.79	341.03	136.74	43.35	381.27	118.08	44.41	310.98
San Francisco-Oakland	129.35	44.72	350.95	142.03	45.70	394.28	122.12	45.15	323.68
San Jose-Monterey	117.23	39.24	321.45	127.55	39.34	358.55	84.08	39.72	200.23
Los Angeles	115.89	38.88	317.54	120.16	38.29	334.54	120.44	41.39	327.43
Greater California	124.34	39.64	346.15	128.67	40.17	360.43	115.01	40.32	310.58
Connecticut	134.99	48.51	361.46	137.55	49.76	367.44	113.92	41.54	303.43
Detroit	126.50	44.15	342.12	129.17	45.47	348.34	123.23	42.24	335.29
Hawaii	121.41	45.04	321.41	139.14	46.10	382.78	71.10	-	211.16
Iowa	123.98	41.98	338.71	124.26	41.97	339.76	114.63	42.87	302.56
Kentucky	119.82	42.58	322.08	118.75	41.57	320.85	127.35	46.72	338.48
Louisiana	119.64	41.36	324.64	119.06	38.77	329.29	122.51	47.91	317.86
New Jersey	128.04	45.90	343.13	132.65	47.68	355.14	108.75	39.36	290.46
New Mexico	109.59	36.78	300.24	115.58	39.12	315.81	60.89	20.95	165.46
Seattle-Puget Sound	138.73	43.16	388.99	143.57	43.43	405.78	120.69	46.96	313.75
Utah	110.04	33.97	309.22	111.52	34.36	313.57	86.14	-	261.70
9 SEER Areas ^b	126.48	42.96	345.19	130.95	43.44	360.12	119.23	42.92	319.07
11 SEER Areas ^b	123.53	41.75	337.69	128.44	42.01	354.75	119.18	42.54	319.89
13 SEER Areas ^b	123.54	41.78	337.63	128.41	42.02	354.65	118.97	42.59	318.98
17 SEER Areas ^b	123.82	41.77	338.66	127.84	42.04	352.51	117.73	42.74	314.07

^a Rates are per 100,000 and are age-adjusted to the 2000 US Std Population (19 age groups - Census P25-1130)

^b The SEER 9 areas are San Francisco, Connecticut, Detroit, Hawaii, Iowa, New Mexico, Seattle, Utah and Atlanta.

The SEER 11 areas comprise the SEER 9 areas plus San Jose-Monterey and Los Angeles.

The SEER 13 areas comprise the SEER 11 areas plus the Alaska Native Registry and Rural Georgia.

The SEER 17 areas comprise the SEER 13 areas plus California excluding SF/SJM/LA, Kentucky, Louisiana and New Jersey.

- Statistic not shown. Rate based on less than 16 cases for the time interval.

Table 4.20
Cancer of the Female Breast (Invasive)

Age-Adjusted SEER Death Rates^a
By Registry, Race and Age

	All Races			Whites			Blacks		
	All Ages	Ages <50	Ages 50+	All Ages	Ages <50	Ages 50+	All Ages	Ages <50	Ages 50+
<u>SEER Death Rates^a, 2002-2006</u>									
Atlanta & Rural Georgia	25.55	5.72	77.48	22.84	3.86	72.56	32.48	8.70	94.76
Atlanta	25.76	5.60	78.55	23.16	3.84	73.76	32.71	8.46	96.21
Rural Georgia	24.07	9.66	61.81	18.00	-	52.91	32.47	-	76.75
California	23.17	5.03	70.69	23.90	4.87	73.73	33.15	9.34	95.51
Greater Bay Area	22.67	4.66	69.82	24.63	4.37	77.68	31.52	9.80	88.39
San Francisco-Oakland	23.70	5.00	72.66	25.67	4.38	81.43	32.47	10.50	90.01
San Jose-Monterey	20.65	4.06	64.10	22.74	4.35	70.90	24.65	-	74.74
Los Angeles	23.09	5.21	69.89	23.27	4.85	71.51	33.98	9.42	98.30
Greater California	23.39	5.07	71.37	23.94	5.03	73.46	33.44	9.08	97.23
Connecticut	24.35	4.69	75.84	24.32	4.56	76.04	26.73	6.28	80.25
Detroit	27.43	6.19	83.05	25.03	5.03	77.39	35.99	9.67	104.90
Hawaii	17.69	4.62	51.90	21.66	4.73	66.00	-	-	-
Iowa	22.86	4.44	71.09	22.84	4.46	70.98	32.82	-	103.64
Kentucky	24.84	5.14	76.41	24.38	4.90	75.40	33.57	8.22	99.95
Louisiana	28.93	7.40	85.32	24.65	4.93	76.27	39.98	12.68	111.46
New Jersey	27.43	5.20	85.62	27.26	4.77	86.13	33.47	8.92	97.77
New Mexico	22.48	4.79	68.82	23.37	4.98	71.50	23.85	-	79.08
Seattle-Puget Sound	23.12	4.14	72.81	23.82	3.99	75.75	27.06	8.32	76.10
Utah	23.75	4.51	74.16	23.96	4.49	74.94	-	-	-
9 SEER Areas ^b	23.99	4.96	73.83	24.04	4.45	75.34	32.55	8.68	95.05
11 SEER Areas ^b	23.61	4.96	72.44	23.83	4.54	74.33	32.78	8.80	95.57
13 SEER Areas ^b	23.58	4.96	72.36	23.78	4.51	74.25	32.70	8.87	95.12
17 SEER Areas ^b	24.42	5.16	74.87	24.37	4.72	75.83	34.15	9.46	98.80
Total U.S.	24.51	5.33	74.74	23.90	4.79	73.95	32.97	9.50	94.43

^a US Mortality Files, National Center for Health Statistics, Centers for Disease Control and Prevention.
Rates are per 100,000 and are age-adjusted to the 2000 US Std Population (19 age groups - Census P25-1130).

^b The SEER 9 areas are San Francisco, Connecticut, Detroit, Hawaii, Iowa, New Mexico, Seattle, Utah and Atlanta.
The SEER 11 areas comprise the SEER 9 areas plus San Jose-Monterey and Los Angeles.
The SEER 13 areas comprise the SEER 11 areas plus the Alaska Native Registry and Rural Georgia.
The SEER 17 areas comprise the SEER 13 areas plus California excluding SF/SJM/LA, Kentucky, Louisiana and New Jersey.
- Statistic not shown. Rate based on less than 16 cases for the time interval.

Table 4.21
Cancer of the Female Breast (*In Situ*)

Age-Adjusted SEER Incidence Rates^a
By Registry, Race and Age

	All Races			Whites			Blacks		
	All Ages	Ages <50	Ages 50+	All Ages	Ages <50	Ages 50+	All Ages	Ages <50	Ages 50+
<u>SEER Incidence Rates^a, 2002-2006</u>									
Atlanta & Rural Georgia	31.45	11.30	84.24	33.83	12.19	90.50	28.83	10.24	77.49
Atlanta	31.78	11.44	85.02	33.98	12.19	91.03	29.59	10.61	79.30
Rural Georgia	25.11	-	72.59	31.84	-	83.19	15.36	-	52.85
California	27.17	9.37	73.77	27.69	9.41	75.58	24.68	7.12	70.68
Greater Bay Area	30.14	11.31	79.44	30.46	11.17	80.98	24.63	5.92	73.61
San Francisco-Oakland	31.15	11.72	82.03	32.04	12.08	84.32	25.07	5.66	75.91
San Jose-Monterey	28.14	10.55	74.18	27.68	9.62	74.98	19.99	-	52.08
Los Angeles	24.57	8.53	66.58	25.11	8.65	68.20	24.09	6.91	69.08
Greater California	27.36	9.09	75.19	27.96	9.22	77.01	25.37	7.96	70.94
Connecticut	43.63	18.40	109.71	44.53	19.06	111.21	34.58	11.39	95.29
Detroit	36.42	13.86	95.49	37.55	15.22	96.05	34.43	10.21	97.87
Hawaii	34.45	13.55	89.18	30.09	11.45	78.89	-	-	-
Iowa	26.75	9.84	71.04	26.71	9.77	71.10	20.14	-	57.15
Kentucky	23.15	8.50	61.50	22.85	8.40	60.69	24.94	7.77	69.90
Louisiana	22.88	7.12	64.15	24.07	7.75	66.80	20.63	5.95	59.08
New Jersey	36.54	16.38	89.33	38.35	17.60	92.71	26.06	8.54	71.95
New Mexico	20.53	7.20	55.44	22.13	8.07	58.97	-	-	-
Seattle-Puget Sound	34.95	12.57	93.55	35.95	12.89	96.34	28.10	8.44	79.56
Utah	22.30	7.48	61.10	22.65	7.58	62.12	-	-	-
9 SEER Areas ^b	32.61	12.34	85.68	33.26	12.75	86.94	30.77	9.65	86.10
11 SEER Areas ^b	30.51	11.32	80.74	31.18	11.63	82.37	28.94	9.01	81.13
13 SEER Areas ^b	30.51	11.32	80.74	31.18	11.63	82.37	28.76	8.92	80.72
17 SEER Areas ^b	29.65	11.03	78.41	30.34	11.36	80.05	26.57	8.27	74.46

^a Rates are per 100,000 and are age-adjusted to the 2000 US Std Population (19 age groups - Census P25-1130)

^b The SEER 9 areas are San Francisco, Connecticut, Detroit, Hawaii, Iowa, New Mexico, Seattle, Utah and Atlanta.

The SEER 11 areas comprise the SEER 9 areas plus San Jose-Monterey and Los Angeles.

The SEER 13 areas comprise the SEER 11 areas plus the Alaska Native Registry and Rural Georgia.

The SEER 17 areas comprise the SEER 13 areas plus California excluding SF/SJM/LA, Kentucky, Louisiana and New Jersey.

- Statistic not shown. Rate based on less than 16 cases for the time interval.

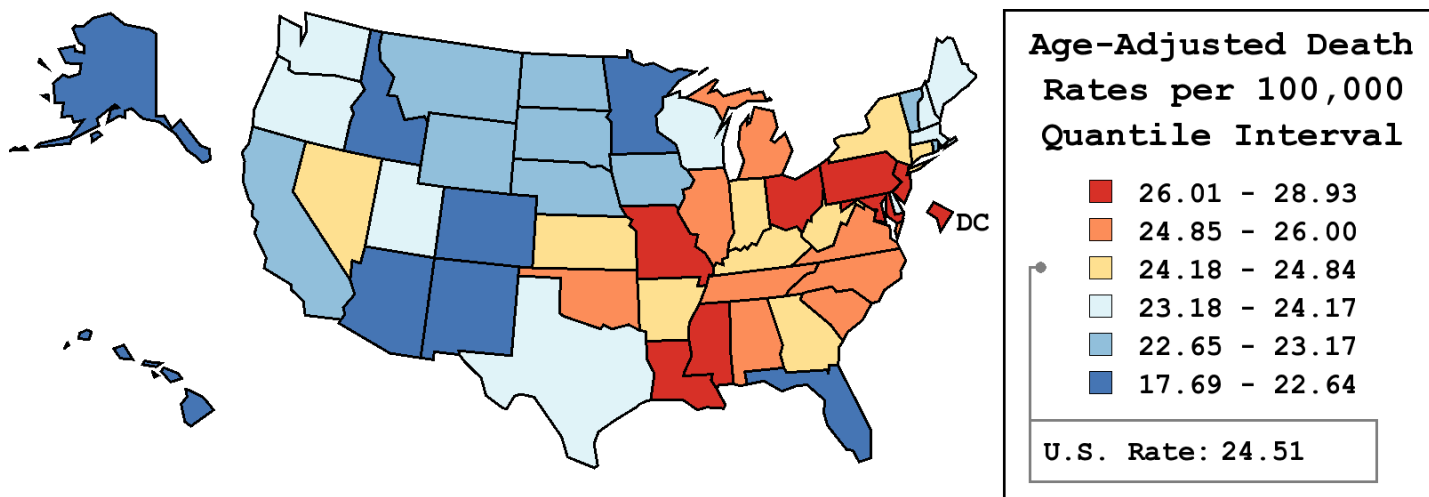
Table 4.22
Cancer of the Female Breast (Invasive)

Age-Adjusted Cancer Death^a Rates By State, All Races, 2002-2006

Females

State	Rate	SE	Rank	PD
TOTAL U.S.	24.51	0.05		
High Five States				
Louisiana	28.93	0.49	(01)	18.05 ^c
D.C.	28.85	1.32	(02)	17.72 ^c
New Jersey	27.43	0.33	(03)	11.91 ^c
Ohio	27.13	0.28	(04)	10.71 ^c
Maryland	26.77	0.42	(05)	9.24
Low Five States				
Colorado	22.22	0.45	(47)	-9.33
Minnesota	22.17	0.40	(48)	-9.55
Arizona	21.75	0.37	(49)	-11.25 ^c
Alaska	21.65	1.41	(50)	-11.66 ^c
Hawaii	17.69	0.70	(51)	-27.83 ^c

State	Rate	SE	Rank	PD	State	Rate	SE	Rank	PD
Alabama	25.11	0.43	(12)	2.44	Montana	23.06	0.91	(37)	-5.92
Alaska	21.65	1.41	(50)	-11.66 ^c	Nebraska	22.90	0.67	(41)	-6.58
Arizona	21.75	0.37	(49)	-11.25 ^c	Nevada	24.36	0.66	(22)	-0.60
Arkansas	24.27	0.54	(25)	-0.95	New Hampshire	23.27	0.79	(34)	-5.05
California	23.17	0.16	(35)	-5.44	New Jersey	27.43	0.33	(03)	11.91 ^c
Colorado	22.22	0.45	(47)	-9.33	New Mexico	22.48	0.66	(45)	-8.27
Connecticut	24.35	0.48	(24)	-0.63	New York	24.67	0.21	(19)	0.67
Delaware	24.01	1.00	(27)	-2.02	North Carolina	25.10	0.32	(13)	2.40
D.C.	28.85	1.32	(02)	17.72 ^c	North Dakota	23.01	1.11	(38)	-6.11
Florida	22.64	0.20	(44)	-7.63	Ohio	27.13	0.28	(04)	10.71 ^c
Georgia	24.48	0.33	(21)	-0.12	Oklahoma	25.06	0.50	(14)	2.26
Hawaii	17.69	0.70	(51)	-27.83 ^c	Oregon	23.90	0.48	(28)	-2.50
Idaho	22.29	0.79	(46)	-9.05	Pennsylvania	26.42	0.26	(06)	7.81
Illinois	25.72	0.27	(11)	4.92	Rhode Island	23.14	0.83	(36)	-5.60
Indiana	24.80	0.37	(18)	1.20	South Carolina	24.99	0.45	(16)	1.97
Iowa	22.86	0.50	(42)	-6.72	South Dakota	22.92	1.01	(40)	-6.46
Kansas	24.64	0.56	(20)	0.53	Tennessee	25.91	0.39	(10)	5.71
Kentucky	24.84	0.45	(17)	1.35	Texas	23.42	0.21	(30)	-4.46
Louisiana	28.93	0.49	(01)	18.05 ^c	Utah	23.75	0.70	(29)	-3.08
Maine	23.36	0.74	(32)	-4.69	Vermont	22.93	1.10	(39)	-6.45
Maryland	26.77	0.42	(05)	9.24	Virginia	26.00	0.36	(09)	6.10
Massachusetts	24.17	0.35	(26)	-1.37	Washington	23.34	0.38	(33)	-4.75
Michigan	25.06	0.30	(15)	2.25	West Virginia	24.35	0.64	(23)	-0.63
Minnesota	22.17	0.40	(48)	-9.55	Wisconsin	23.39	0.38	(31)	-4.56
Mississippi	26.39	0.57	(07)	7.66	Wyoming	22.65	1.29	(43)	-7.59
Missouri	26.25	0.39	(08)	7.12					



^a US Mortality Files, National Center for Health Statistics, Centers for Disease Control and Prevention. Rates are per 100,000 and are age-adjusted to the 2000 US Std Population (19 age groups - Census P25-1130).
^b Difference between state rate and total U.S. rate is statistically significant ($p \leq .0002$).
^c Absolute percent difference between state rate and total U.S. rate is 10% or more.
SE Standard error of the rate.
PD Percent difference between state rate and total U.S. rate.

Table 4.23
Cancer of the Breast (Invasive)

Estimated United States Cancer Prevalence Counts^a on January 1, 2006
By Race/Ethnicity, Sex and Years Since Diagnosis

Years Since Diagnosis		0 to <5	5 to <10	10 to <15	15 to <20	20 to <25	25 to <30	0 to <16 ^e	0 to <31 ^e	>=31 ^g	Complete ^h
<u>Race</u>	<u>Sex</u>										
All Races ^b	Both Sexes	806,524	648,228	436,782	291,728	158,753	96,802	1,959,764	2,454,992	91,333	2,546,325
	Males	5,466	3,352	1,709	1,182	736	406	10,895	12,876	256	13,132
	Females	801,058	644,876	435,073	290,546	158,017	96,396	1,948,869	2,442,116	91,077	2,533,193
White ^b	Both Sexes	700,075	574,925	391,645	266,134	144,496	88,457	1,728,591	2,180,598	81,191	2,261,789
	Males	4,614	2,984	1,464	1,052	674	393	9,379	11,206	95 ⁱ	11,301
	Females	695,461	571,941	390,181	265,082	143,822	88,064	1,719,212	2,169,392	81,096	2,250,488
Black ^b	Both Sexes	73,021	49,094	31,491	18,074	10,411	5,834	157,985	188,832	+	+
	Males	681	270	161	120	50	13	1,160	1,295	+	+
	Females	72,340	48,824	31,330	17,954	10,361	5,821	156,825	187,537	6,396	193,933
Asian/ Pacific Islander ^c	Both Sexes	25,304	17,399	9,956	+	+	+	54,134	+	+	+
	Males	106	45	48	+	+	+	203	+	+	+
	Females	25,198	17,354	9,908	+	+	+	53,931	+	+	+
Hispanic ^d	Both Sexes	45,325	29,708	18,423	+	+	+	96,279	+	+	+
	Males	176	101	27	+	+	+	320	+	+	+
	Females	45,149	29,607	18,396	+	+	+	95,959	+	+	+

Estimated prevalence percent^a on January 1, 2006, of the SEER 11 population diagnosed in the previous 16 years
By Age at Prevalence, Race/Ethnicity and Sex

Age at Prevalence		All Ages	0-9	10-19	20-29	30-39	40-49	50-59	60-69	70-79	80+	Age-Adjusted ^f All Ages
<u>Race</u>	<u>Sex</u>											
All Races ^c	Both Sexes	0.5773%	-	0.0002%	0.0057%	0.0814%	0.4260%	1.1244%	1.9183%	2.4904%	2.8998%	0.5857%
	Males	0.0063%	-	-	-	0.0004%	0.0023%	0.0093%	0.0242%	0.0412%	0.0550%	0.0075%
	Females	1.1379%	-	0.0004%	0.0116%	0.1647%	0.8490%	2.1882%	3.6274%	4.3807%	4.4781%	1.0696%
White ^c	Both Sexes	0.6330%	-	0.0002%	0.0053%	0.0808%	0.4294%	1.1649%	2.0317%	2.6780%	3.0991%	0.6162%
	Males	0.0068%	-	-	-	0.0002%	0.0022%	0.0091%	0.0241%	0.0435%	0.0591%	0.0077%
	Females	1.2596%	-	0.0004%	0.0110%	0.1671%	0.8699%	2.3024%	3.8921%	4.7584%	4.7661%	1.1365%
Black ^c	Both Sexes	0.3941%	-	-	0.0078%	0.0962%	0.4214%	0.9915%	1.6239%	2.0368%	2.3114%	0.5063%
	Males	0.0061%	-	-	-	-	0.0036%	0.0132%	0.0415%	0.0448%	0.0473%	0.0093%
	Females	0.7463%	-	-	0.0150%	0.1797%	0.7883%	1.8049%	2.8559%	3.3621%	3.4078%	0.8709%
Asian/ Pacific Islander ^c	Both Sexes	0.4222%	-	-	0.0059%	0.0726%	0.4106%	0.9699%	1.3902%	1.5756%	1.6294%	0.4308%
	Males	0.0034%	-	-	-	-	-	0.0067%	0.0106%	0.0230%	0.0266%	0.0040%
	Females	0.8155%	-	-	0.0118%	0.1404%	0.7865%	1.8153%	2.5596%	2.7136%	2.6856%	0.7801%
Hispanic ^d	Both Sexes	0.2191%	-	-	0.0046%	0.0554%	0.2939%	0.7737%	1.2684%	1.6101%	1.7243%	0.3870%
	Males	0.0013%	-	-	-	-	0.0010%	0.0048%	0.0081%	0.0152%	0.0200%	0.0029%
	Females	0.4495%	-	-	0.0100%	0.1191%	0.6046%	1.5030%	2.3360%	2.7707%	2.7149%	0.7060%

^a US 2006 cancer prevalence counts are based on 2006 cancer prevalence proportions from the SEER registries and 1/1/2006 US population estimates based on the average of 2005 and 2006 population estimates from the US Bureau of the Census. Prevalence was calculated using the First Malignant Primary Only for a person.

^{b c d} Statistics based on (b) SEER 9 Areas (c) SEER 11 Areas and Rural Georgia (d) NHIA for Hispanic for SEER 11 Areas and Rural Georgia.

^e Maximum limited-duration prevalence: 31 years for 1975-2006 SEER 9 data; 16 years for 1990-2006 SEER 11 data (used to calculate prevalence for Hispanics and Asian Pacific Islanders).

^f Percentages are age-adjusted to the 2000 US Standard Population (19 age groups - Census P25-1130) by 5-year age groups.

^{g h i} (g) Cases diagnosed more than 31 years ago were estimated using the completeness index method (Capocaccia et. al. 1997, Merrill et. al. 2000). (h) Complete prevalence is obtained by summing 0 to <31 and >=31. (i) Age-specific completeness index was approximated using empirical data from historical Connecticut tumor registry.

- Statistic not shown. Statistic based on fewer than 5 cases estimated alive in SEER for the time interval.

+ Not available.

Table 4.24

Cancer of the Female Breast (Invasive)

Percent Distribution and Counts by Histology among Histologically Confirmed Cases, 2002-2006
Females by Race

Histology ^a	All Races		White		Black		Asian/Pacific Islander		American Indian/ Alaska Native ^b		Hispanic ^c	
	Count	Percent	Count	Percent	Count	Percent	Count	Percent	Count	Percent	Count	Percent
Carcinoma	243,134	99.4%	202,283	99.4%	21,929	99.3%	16,291	99.3%	845	98.8%	21,806	99.1%
Epidermoid carcinoma ^d (8051-8131)	174	0.1%	134	0.1%	31	0.1%	-	-	-	-	-	-
Adenocarcinoma ^e	237,448	97.1%	197,895	97.3%	21,027	95.2%	15,983	97.4%	828	96.8%	21,134	96.0%
Adenocarcinoma, NOS (8140)	2,446	1.0%	1,973	1.0%	307	1.4%	119	0.7%	-	-	227	1.0%
Infiltrating duct carcinoma (8500)	167,100	68.3%	137,352	67.5%	15,766	71.4%	12,160	74.1%	621	72.6%	15,326	69.6%
Lobular carcinoma, NOS (8520)	19,613	8.0%	17,469	8.6%	1,226	5.6%	734	4.5%	58	6.8%	1,419	6.4%
Inflammatory adenocarcinoma (8530)	2,042	0.8%	1,668	0.8%	272	1.2%	87	0.5%	-	-	282	1.3%
Infiltrating duct mixed and infiltrating lobular mixed (8522-8524)	29,956	12.2%	25,960	12.8%	2,055	9.3%	1,644	10.0%	94	11.0%	2,514	11.4%
Mucinous adenocarcinoma (8480,8482)	6,147	2.5%	5,029	2.5%	506	2.3%	545	3.3%	20	2.3%	479	2.2%
Mucin-producing adenocarcinoma (8481)	133	0.1%	110	0.1%	17	0.1%	-	-	-	-	-	-
Tubular adenocarcinoma (8211)	3,547	1.5%	3,231	1.6%	138	0.6%	133	0.8%	-	-	191	0.9%
Papillary adenocarcinoma (8050,8260,8503,8504)	1,435	0.6%	1,035	0.5%	222	1.0%	156	1.0%	-	-	160	0.7%
Paget disease (8540-8543)	1,396	0.6%	1,159	0.6%	127	0.6%	102	0.6%	-	-	160	0.7%
Other adenocarcinomas ^f	3,633	1.5%	2,909	1.4%	391	1.8%	298	1.8%	-	-	369	1.7%
Other specific carcinomas ^g	2,735	1.1%	2,040	1.0%	512	2.3%	160	1.0%	-	-	354	1.6%
Medullary adenocarcinoma (8510-8513)	1,527	0.6%	1,071	0.5%	340	1.5%	103	0.6%	-	-	236	1.1%
Other ^h	1,208	0.5%	969	0.5%	172	0.8%	57	0.3%	-	-	118	0.5%
Unspecified, Carcinoma, NOS (8010-8011,8020-8022)	2,777	1.1%	2,214	1.1%	359	1.6%	142	0.9%	-	-	303	1.4%

Source: SEER 17 areas (San Francisco, Connecticut, Detroit, Hawaii, Iowa, New Mexico, Seattle, Utah, Atlanta, San Jose-Monterey, Los Angeles, Alaska Native Registry, Rural Georgia, California excluding SF/SJM/LA, Kentucky, Louisiana and New Jersey). Percents may not sum to 100 due to rounding.

^a Excludes Kaposi Sarcoma, mesothelioma, lymphomas, leukemias, myelomas, lymphoreticular, and immunoproliferative diseases.

^b Estimates for American Indian/Alaska Native are based on the CHSDA (Contract Health Service Delivery Area) counties.

^c Hispanic is not mutually exclusive from whites, blacks, Asian/Pacific Islanders, and American Indians/Alaska Natives.

^d Underlying incidence data for Hispanics are based on NHIA and exclude cases from the Alaska Native Registry.

^e Epidermoid carcinoma includes squamous, basal, and transitional cell carcinomas.

^f Adenocarcinoma includes histologies 8050, 8140-8147, 8160-8162, 8180-8221, 8250-8507, 8514, 8520-8551, 8560, 8570-8574, 8576, 8940-8941.

^g Other adenocarcinomas include histologies 8141-8147, 8160-8162, 8180-8210, 8212-8221, 8250-8259, 8261-8479, 8483-8499, 8501-8502, 8505-8507, 8514, 8521, 8525-8529, 8531-8539, 8544-8551, 8560, 8570-8574, 8576, 8940-8941.

^h Other specific carcinomas include histologies 8012-8015, 8030-8046, 8150-8155, 8170-8175, 8230-8249, 8508, 8510-8513, 8561-8562, 8575, 8580-8671.

ⁱ Other includes histologies 8012-8015, 8030-8046, 8150-8155, 8170-8175, 8230-8249, 8508, 8561-8562, 8575, 8580-8671.

- Statistic not shown due to fewer than 16 cases during the time period.

Table 4.24 - continued

Cancer of the Female Breast (Invasive)

Percent Distribution and Counts by Histology among Histologically Confirmed Cases, 2002-2006
Females by Race

Histology ^a	All Races		White		Black		Asian/Pacific Islander		American Indian/ Alaska Native ^b		Hispanic ^c	
	Count	Percent	Count	Percent	Count	Percent	Count	Percent	Count	Percent	Count	Percent
Sarcoma and other soft tissue tumors (8680-8713,8800-8921, 9040-9044,9120-9136, 9150-9252,9370-9373, 9540-9582)	307	0.1%	253	0.1%	28	0.1%	18	0.1%	-	-	20	0.1%
Hemangiosarcomas (9120-9126,9170)	144	0.1%	129	0.1%	-	-	-	-	-	-	-	-
Other sarcomas ^d	163	0.1%	124	0.1%	21	0.1%	-	-	-	-	-	-
Other specific types (8720-8790,8930-8936, 8950-9030,9060-9110, 9260-9365,9380-9539)	678	0.3%	510	0.3%	71	0.3%	82	0.5%	-	-	116	0.5%
Phyllodes tumor, malignant (9020)	553	0.2%	417	0.2%	53	0.2%	71	0.4%	-	-	98	0.4%
Other ^e	125	0.1%	93	0.0%	18	0.1%	-	-	-	-	18	0.1%
Unspecified (8000-8005)	468	0.2%	363	0.2%	55	0.2%	23	0.1%	-	-	68	0.3%
Total ^f	244,587	100.0%	203,409	100.0%	22,083	100.0%	16,414	100.0%	855	100.0%	22,010	100.0%

Source: SEER 17 areas (San Francisco, Connecticut, Detroit, Hawaii, Iowa, New Mexico, Seattle, Utah, Atlanta, San Jose-Monterey, Los Angeles, Alaska Native Registry, Rural Georgia, California excluding SF/SJM/LA, Kentucky, Louisiana and New Jersey). Percents may not sum to 100 due to rounding.

^a Excludes Kaposi Sarcoma, mesothelioma, lymphomas, leukemias, myelomas, lymphoreticular, and immunoproliferative diseases.

^b Estimates for American Indian/Alaska Native are based on the CHSDA (Contract Health Service Delivery Area) counties.

^c Hispanic is not mutually exclusive from whites, blacks, Asian/Pacific Islanders, and American Indians/Alaska Natives.

Underlying incidence data for Hispanics are based on NHIA and exclude cases from the Alaska Native Registry.

^d Other sarcomas include histologies 8680-8713, 8800-8921, 9040-9044, 9127-9136, 9150-9169, 9171-9252, 9370-9373, 9540-9582.

^e Other includes histologies 8720-8790, 8930-8936, 8950-9019, 9021-9030, 9060-9110, 9260-9365, 9380-9539.

^f Total includes carcinoma cases from the previous page.

- Statistic not shown due to fewer than 16 cases during the time period.

Table 4.25

Cancer of the Female Breast(*In Situ*)Percent Distribution and Counts by Histology among Histologically Confirmed Cases, 2002-2006
Females by Race

Histology ^a	All Races		White		Black		Asian/Pacific Islander		American Indian/ Alaska Native ^b		Hispanic ^c	
	Count	Percent	Count	Percent	Count	Percent	Count	Percent	Count	Percent	Count	Percent
Adenocarcinoma ^d	56,033	95.0%	45,834	94.9%	4,837	95.7%	4,548	94.7%	163	96.4%	4,577	95.6%
Adenocarcinoma <i>in situ</i> , NOS (8140/2)	-	-	-	-	-	-	-	-	-	-	-	-
Cribriform carcinoma <i>in situ</i> (8201/2)	4,737	8.0%	3,816	7.9%	370	7.3%	492	10.2%	-	-	389	8.1%
Ductal carcinoma <i>in situ</i> (8500/2)	20,472	34.7%	16,715	34.6%	1,819	36.0%	1,645	34.3%	72	42.6%	1,648	34.4%
Lobular carcinoma <i>in situ</i> , NOS (8520/2)	6,786	11.5%	5,950	12.3%	408	8.1%	240	5.0%	23	13.6%	496	10.4%
Comedocarcinoma <i>in situ</i> (8501/2)	4,746	8.0%	3,934	8.1%	392	7.8%	372	7.7%	-	-	378	7.9%
Intraductal and lobular carcinoma <i>in situ</i> (8522/2,8523/2,8524/2)	15,358	26.0%	12,336	25.6%	1,405	27.8%	1,459	30.4%	31	18.3%	1,329	27.8%
Intraductal micropapillary (8507/2)	1,734	2.9%	1,412	2.9%	177	3.5%	123	2.6%	-	-	154	3.2%
Other adenocarcinomas ^e	2,185	3.7%	1,657	3.4%	266	5.3%	216	4.5%	-	-	183	3.8%
Other <i>in situ</i> histologies ^f	2,941	5.0%	2,444	5.1%	219	4.3%	253	5.3%	-	-	209	4.4%
Total	58,974	100.0%	48,278	100.0%	5,056	100.0%	4,801	100.0%	169	100.0%	4,786	100.0%

Source: SEER 17 areas (San Francisco, Connecticut, Detroit, Hawaii, Iowa, New Mexico, Seattle, Utah, Atlanta, San Jose-Monterey, Los Angeles, Alaska Native Registry, Rural Georgia, California excluding SF/SJM/LA, Kentucky, Louisiana and New Jersey). Percents may not sum to 100 due to rounding.

^a Excludes Kaposi Sarcoma, mesothelioma, lymphomas, leukemias, myelomas, lymphoreticular, and immunoproliferative diseases.

^b Estimates for American Indian/Alaska Native are based on the CHSDA (Contract Health Service Delivery Area) counties.

^c Hispanic is not mutually exclusive from whites, blacks, Asian/Pacific Islanders, and American Indians/Alaska Natives.

^d Underlying incidence data for Hispanics are based on NHIA and exclude cases from the Alaska Native Registry.

^e Adenocarcinoma includes histologies 8050, 8140-8147, 8160-8162, 8180-8221, 8250-8507, 8514, 8520-8551, 8560, 8570-8574, 8576, 8940-8941.

^f Other adenocarcinomas include 8050, 8141-8147, 8160-8162, 8180-8200, 8202-8221, 8250-8490, 8502-8506, 8514, 8521, 8525-8551, 8560, 8570-8574, 8576, 8940-8941.

^f Other histologies include 8000-8049, 8051-8139, 8148-8159, 8163-8179, 8222-8249, 8508-8513, 8515-8519, 8552-8559, 8561-8569, 8575, 8577-8939, 8942-9989.

- Statistic not shown due to fewer than 16 cases during the time period.

SEER Observed Incidence, SEER Delay Adjusted Incidence and US Death Rates^a Cancer of the Female Breast, by Race

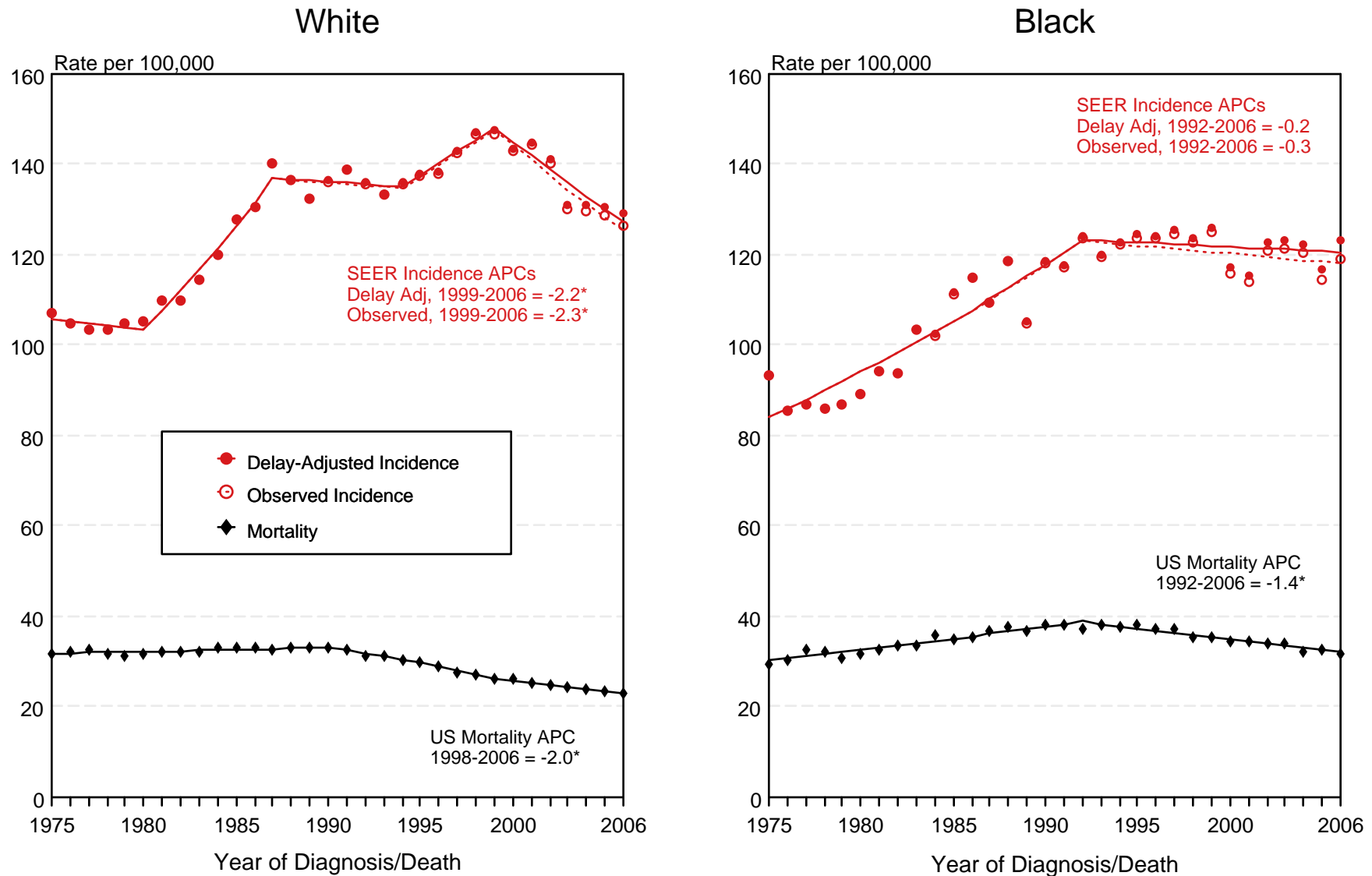


Figure 4.1

^a Source: SEER 9 areas and US Mortality Files (National Center for Health Statistics, CDC). Rates are age-adjusted to the 2000 US Std Population (19 age groups - Census P25-1103). Regression lines and APCs are calculated using the Joinpoint Regression Program Version 3.3.1, April 2008, National Cancer Institute. The APC is the Annual Percent Change for the regression line segments. The APC shown on the graph is for the most recent trend.

* The APC is significantly different from zero ($p < 0.05$).

SEER Observed Incidence, SEER Delay Adjusted Incidence and US Death Rates^a Cancer of the Female Breast, by Age and Race

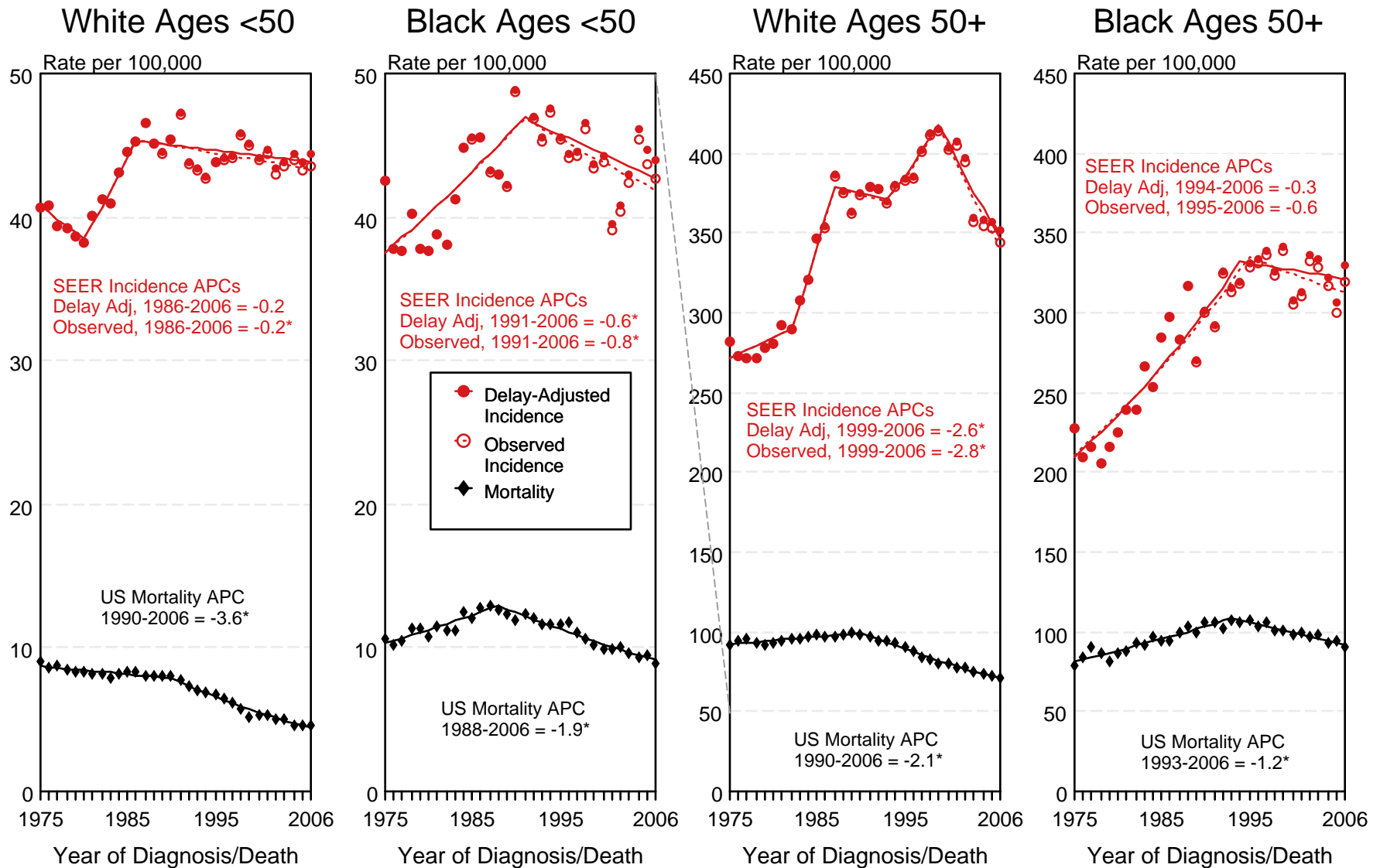


Figure 4.2

^a Source: SEER 9 areas and US Mortality Files (National Center for Health Statistics, CDC). Rates are age-adjusted to the 2000 US Std Population (19 age groups - Census P25-1103). Regression lines and APCs are calculated using the Joinpoint Regression Program Version 3.3.1, April 2008, National Cancer Institute. The APC is the Annual Percent Change for the regression line segments. The APC shown on the graph is for the most recent trend.
* The APC is significantly different from zero ($p < 0.05$).

SEER Observed Incidence and Delay Adjusted Incidence Rates^a Cancer of the Female Breast (*In Situ*), by Race

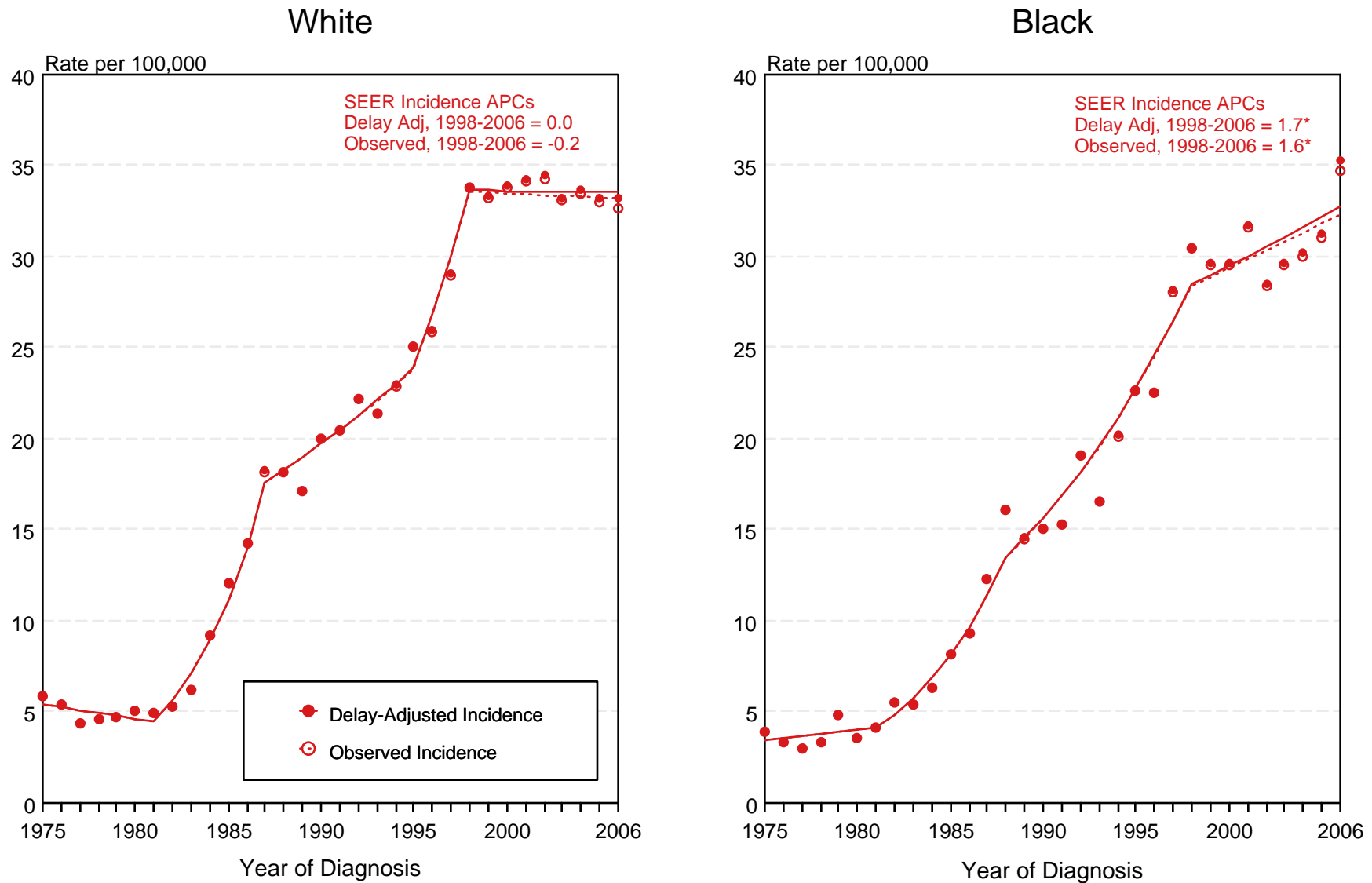


Figure 4.3

^a Source: SEER 9 areas. Rates are age-adjusted to the 2000 US Std Population (19 age groups - Census P25-1103). Regression lines and APCs are calculated using the Joinpoint Regression Program Version 3.3.1, April 2008, National Cancer Institute. The APC is the Annual Percent Change for the regression line segments. The APC shown on the graph is for the most recent trend. The APC is significantly different from zero ($p < 0.05$).

*

SEER Incidence and US Death Rates^a Cancer of the Female Breast

Joinpoint Analyses for Whites and Blacks from 1975-2006

and for Asian/Pacific Islanders, American Indians/Alaska Natives and Hispanics from 1992-2006

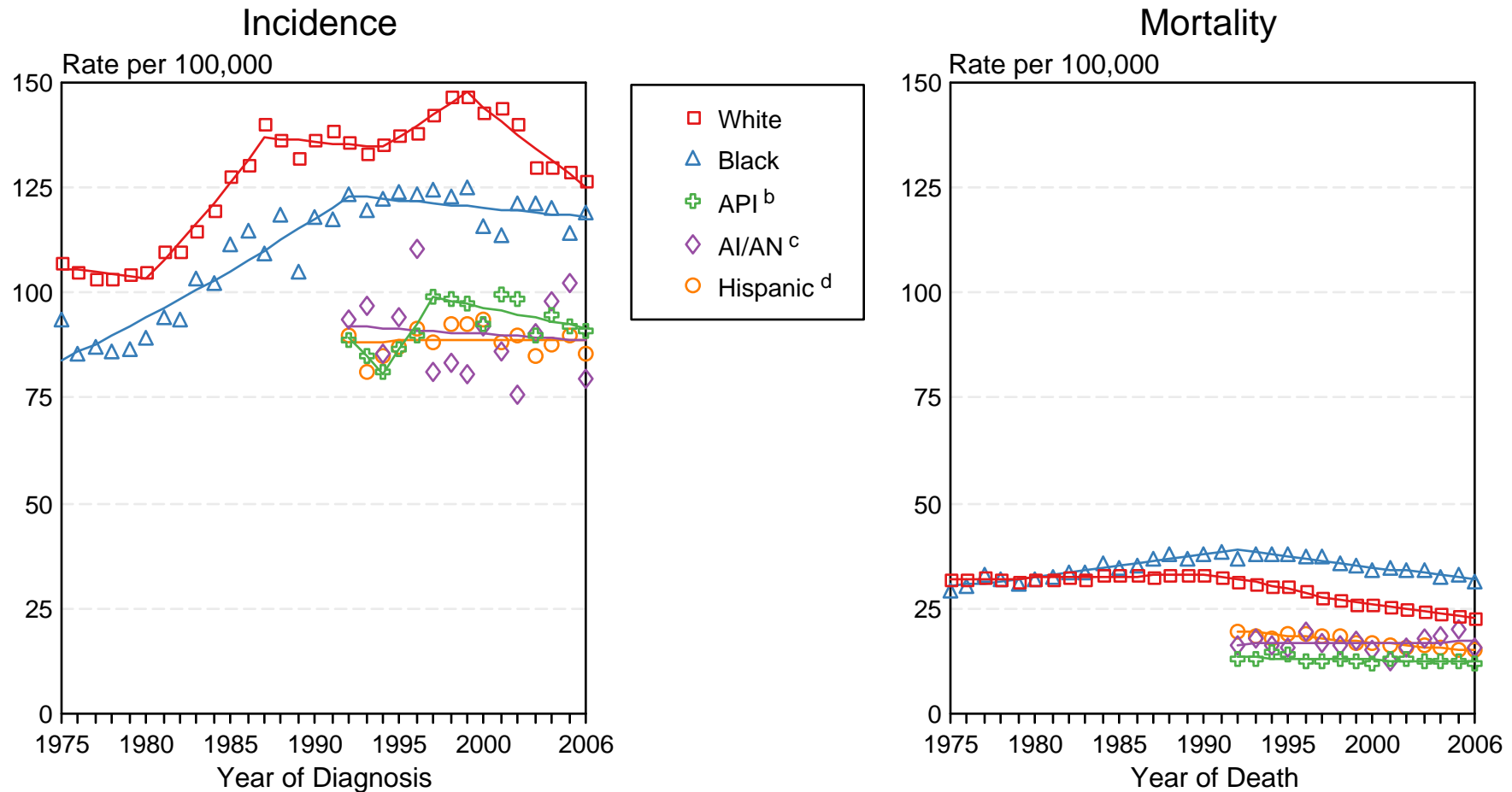


Figure 4.4

Source: Incidence data for whites and blacks are from the SEER 9 areas (San Francisco, Connecticut, Detroit, Hawaii, Iowa, New Mexico, Seattle, Utah, Atlanta).

Incidence data for Asian/Pacific Islanders, American Indians/Alaska Natives and Hispanics are from the SEER 13 Areas (SEER 9 Areas, San Jose-Monterey, Los Angeles, Alaska Native Registry and Rural Georgia). Mortality data are from US Mortality Files, National Center for Health Statistics, CDC.

^a Rates are age-adjusted to the 2000 US Std Population (19 age groups - Census P25-1103).

Regression lines are calculated using the Joinpoint Regression Program Version 3.3.1, April 2008, National Cancer Institute. Joinpoint analyses for Whites and Blacks during the 1975-2006 period allow a maximum of 4 joinpoints. Analyses for other ethnic groups during the period 1992-2006 allow a maximum of 2 joinpoints.

^b API = Asian/Pacific Islander.

^c AI/AN = American Indian/Alaska Native. Rates for American Indian/Alaska Native are based on the CHSDA(Contract Health Service Delivery Area) counties.

^d Hispanic is not mutually exclusive from whites, blacks, Asian/Pacific Islanders, and American Indians/Alaska Natives. Incidence data for Hispanics are based on NHIA and exclude cases from the Alaska Native Registry. Mortality data for Hispanics exclude cases from Connecticut, the District of Columbia, Maine, Maryland, Minnesota, New Hampshire, New York, North Dakota, Oklahoma, and Vermont.

Breast Cancer Incidence Rates, 1975-2006 by Age, *In Situ* vs Malignant All Races, Female

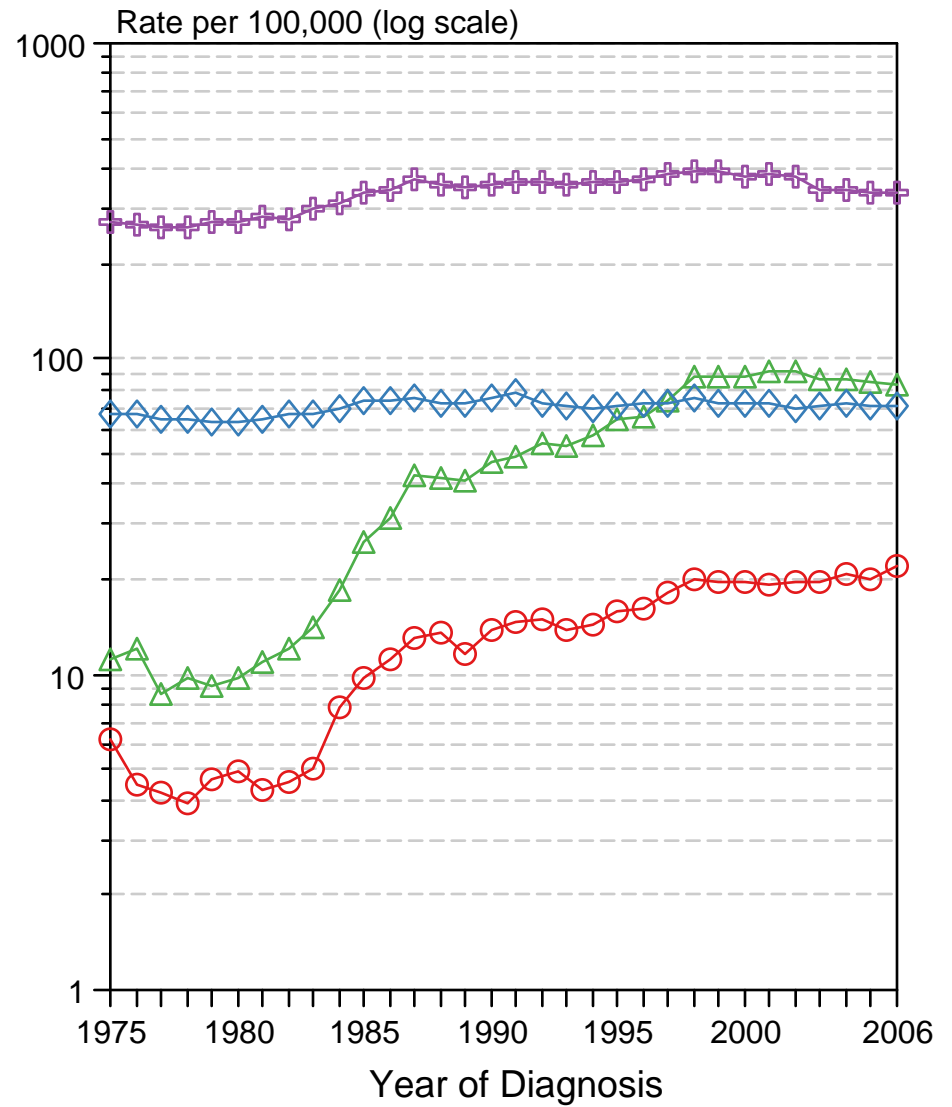
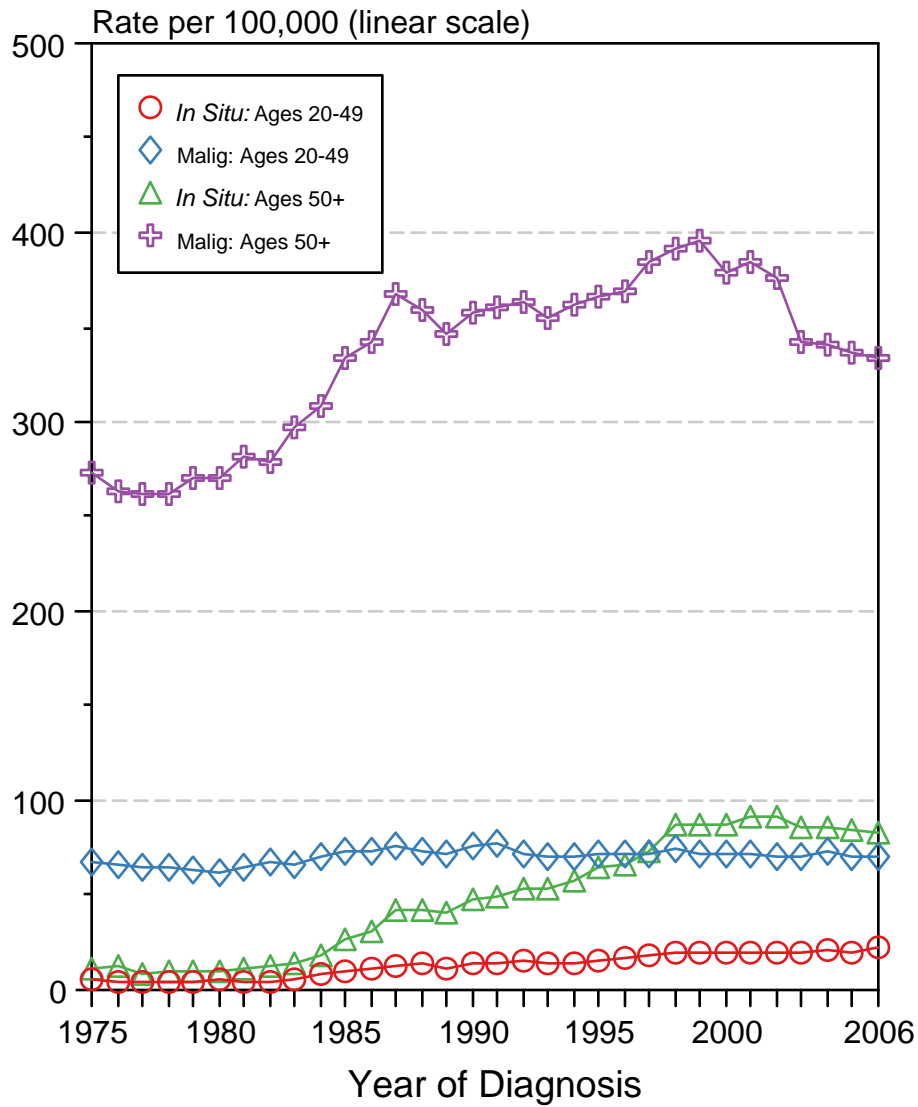


Figure 4.5

Source: SEER 9 areas. Rates are age-adjusted to the 2000 US Std Population (19 age groups - Census P25-1103).

Breast Cancer Incidence Rates, 1975-2006 by Age, *In Situ* vs Malignant White Female

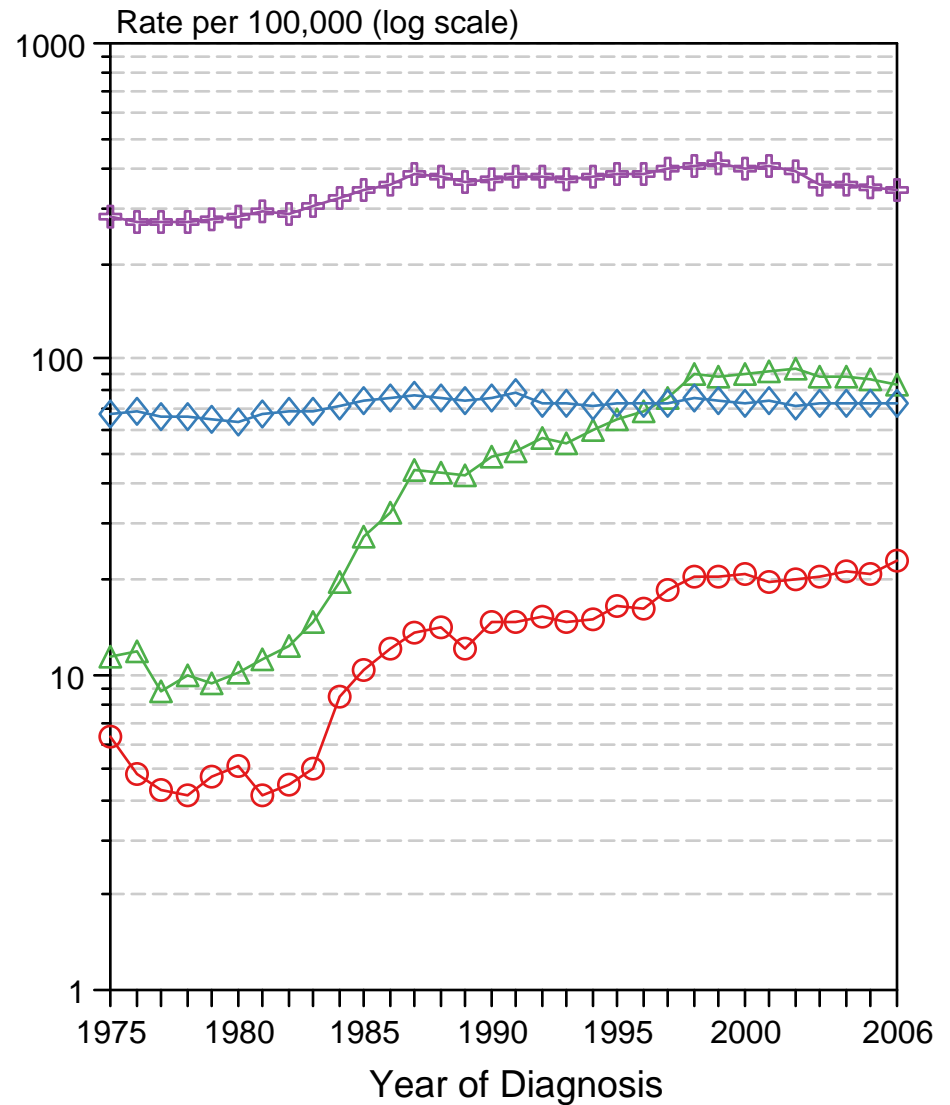
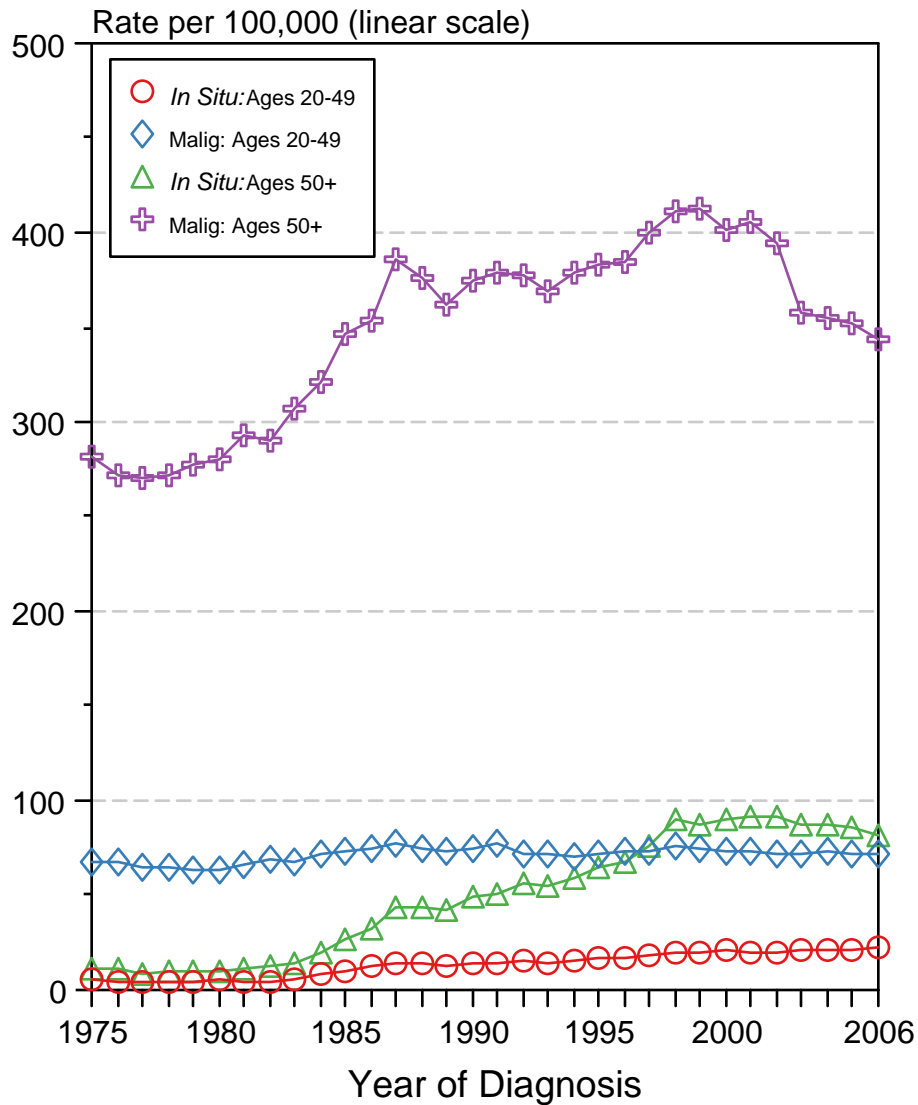


Figure 4.6

Source: SEER 9 areas. Rates are age-adjusted to the 2000 US Std Population (19 age groups - Census P25-1103).

Breast Cancer Incidence Rates, 1975-2006 by Age, *In Situ* vs Malignant Black Female

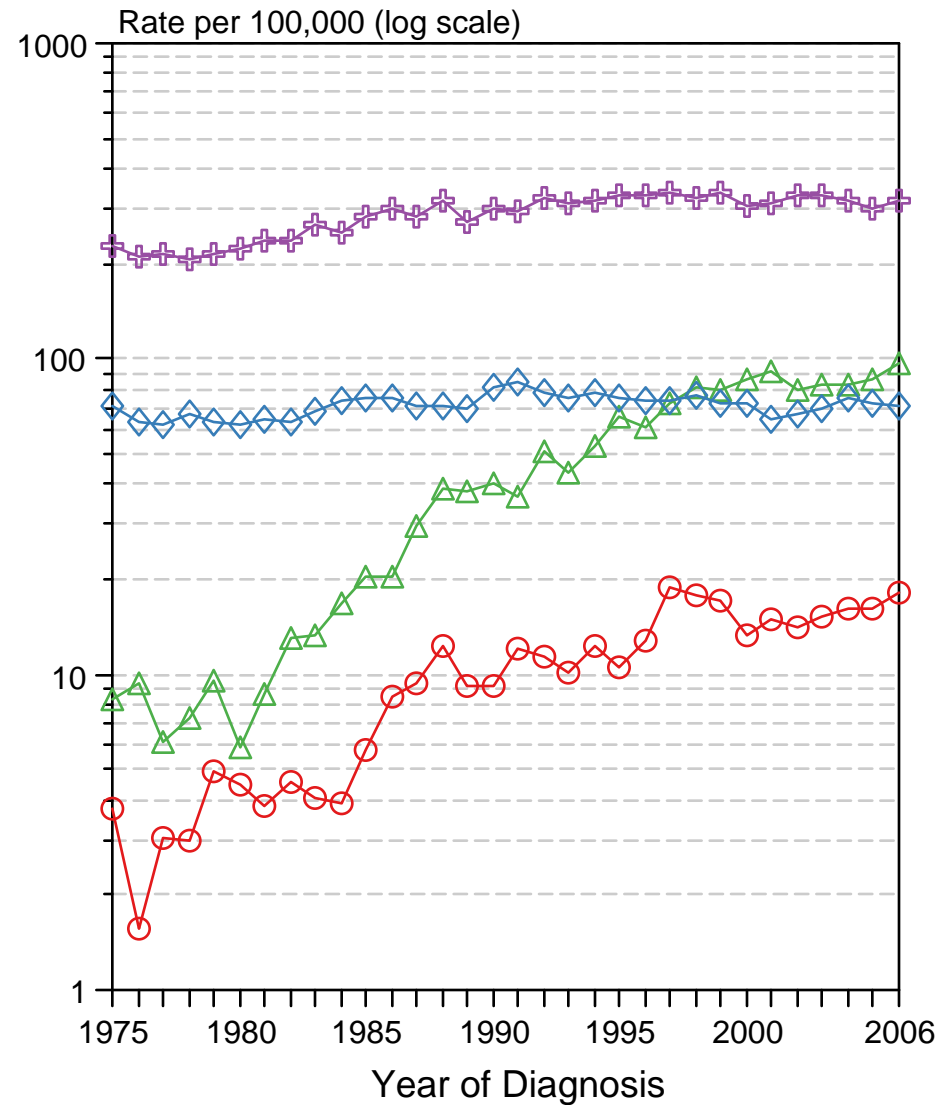
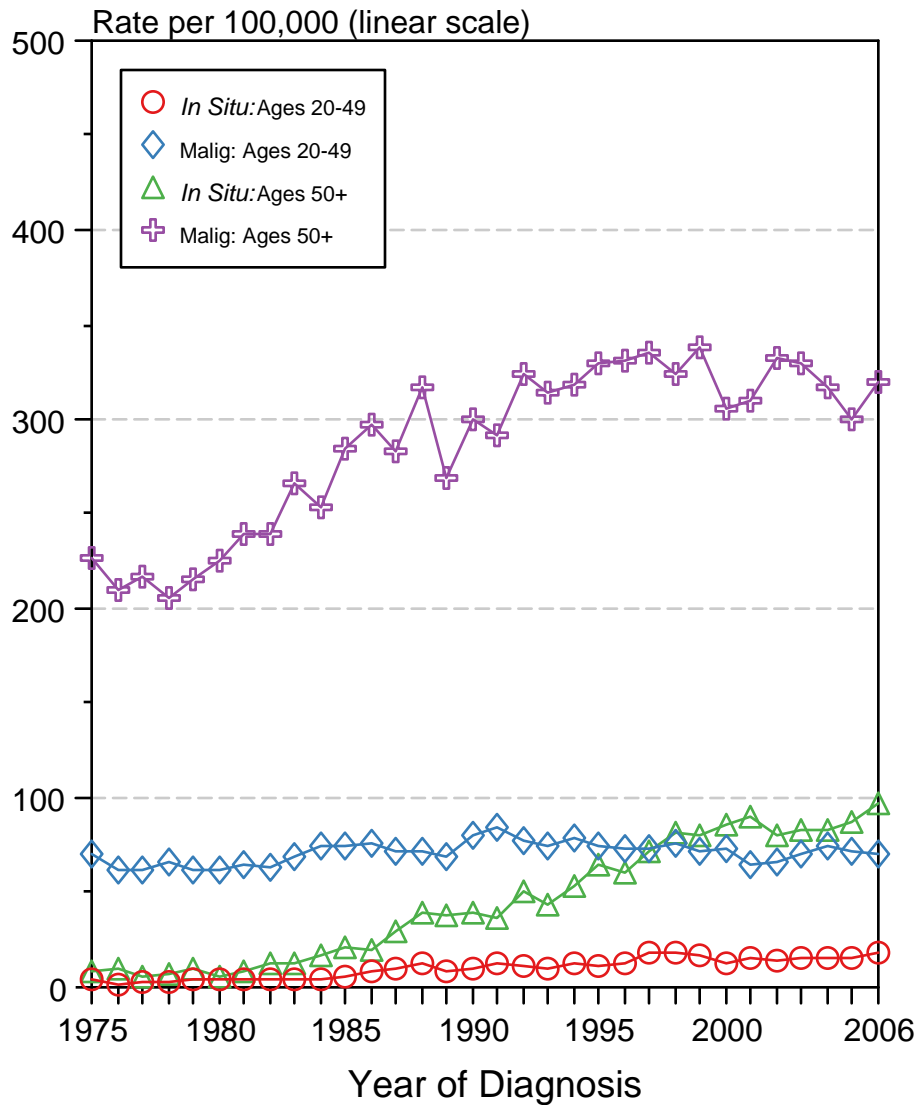


Figure 4.7

Source: SEER 9 areas. Rates are age-adjusted to the 2000 US Std Population (19 age groups - Census P25-1103).

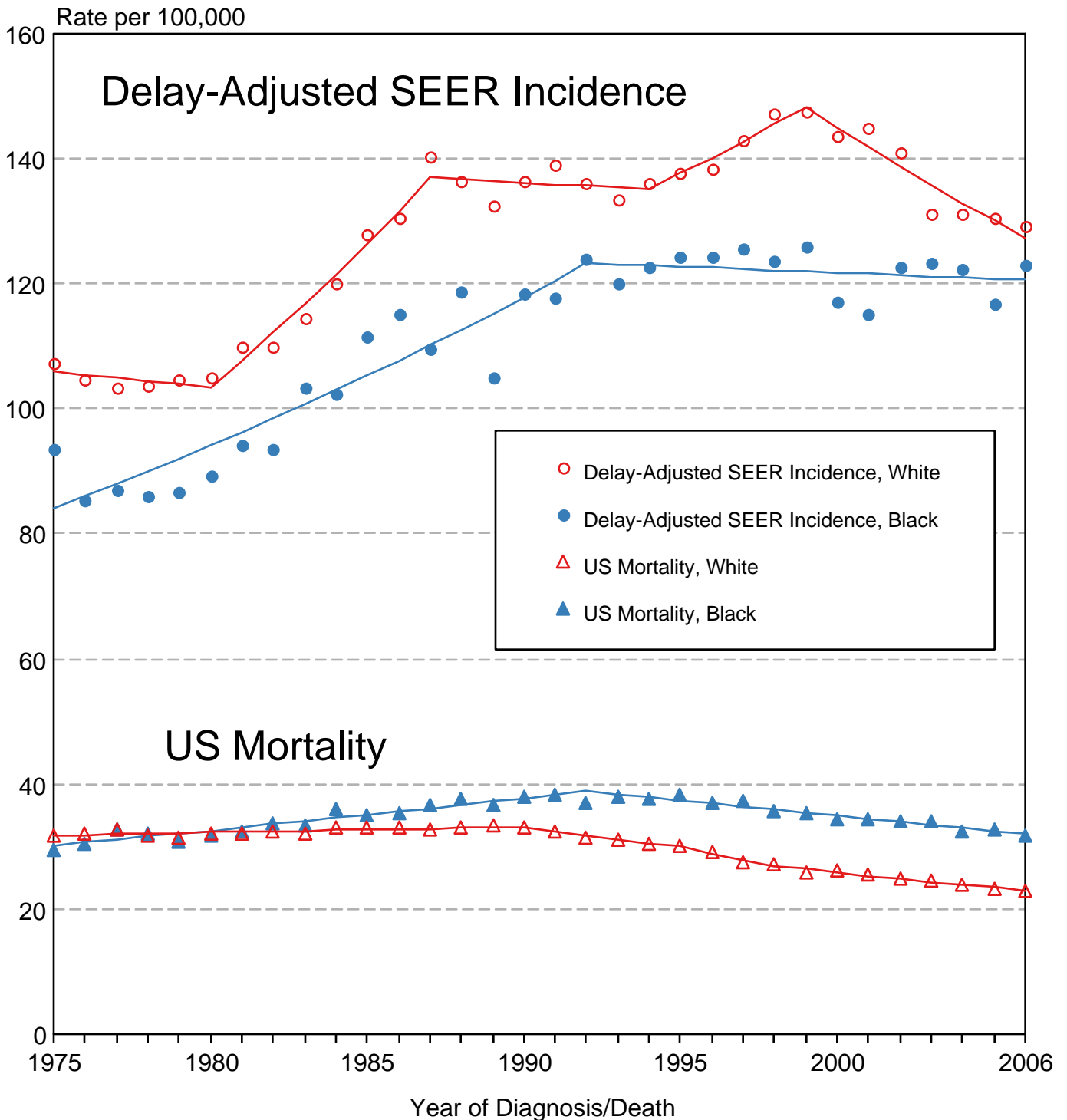
Figure 4.8

Cancer of the Breast

Delay-Adjusted SEER Incidence & US Mortality

White Females vs Black Females

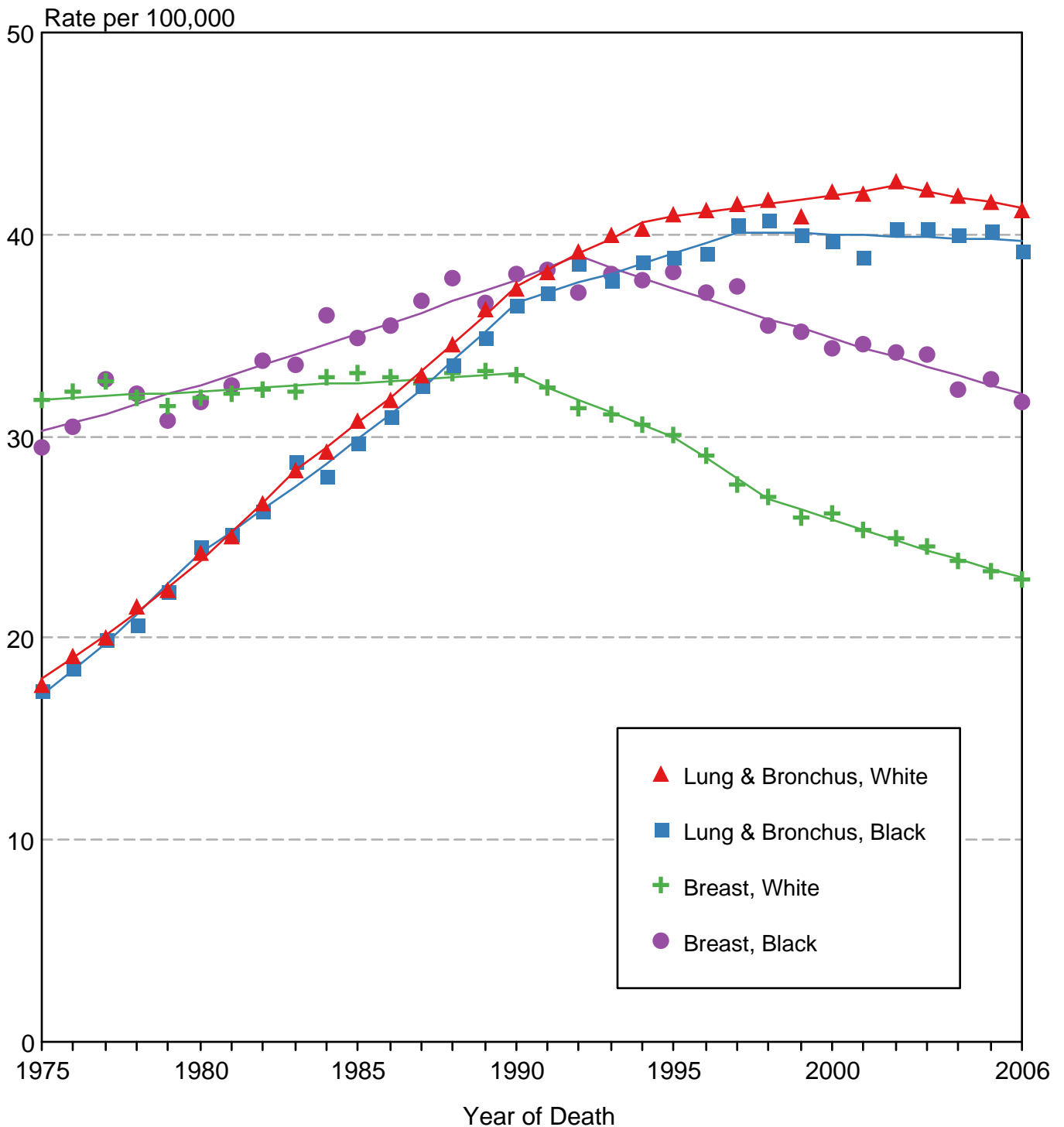
1975-2006



Source: SEER 9 areas and US Mortality Files (National Center for Health Statistics, CDC). Rates are age-adjusted to the 2000 US Std Population (19 age groups - Census P25-1103). Regression lines are calculated using the Joinpoint Regression Program Version 3.3.1, April 2008, National Cancer Institute.

Figure 4.9

US Death Rates for Cancer of the Breast and Cancer of the Lung and Bronchus White Females vs Black Females 1975-2006



Source: US Mortality Files, National Center for Health Statistics, CDC.
Rates are age-adjusted to the 2000 US Std Population (19 age groups - Census P25-1103).
Regression lines are calculated using the Joinpoint Regression Program Version 3.3.1, April 2008, National Cancer Institute.

SEER Observed Incidence and SEER Delay Adjusted Incidence Rates^a SEER 9 Areas Compared to SEER 13 Areas Cancer of the Female Breast, by Race

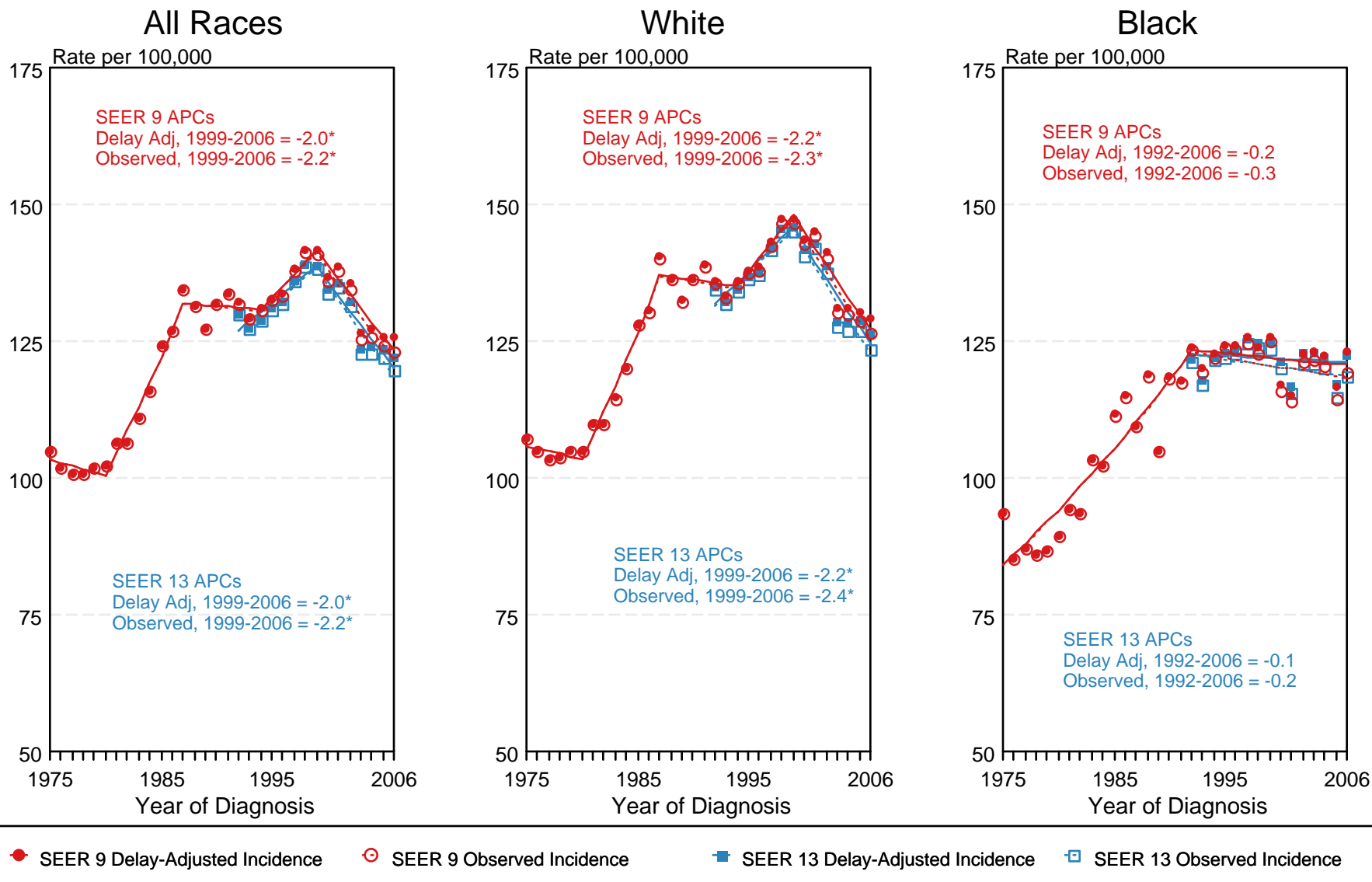


Figure 4.10

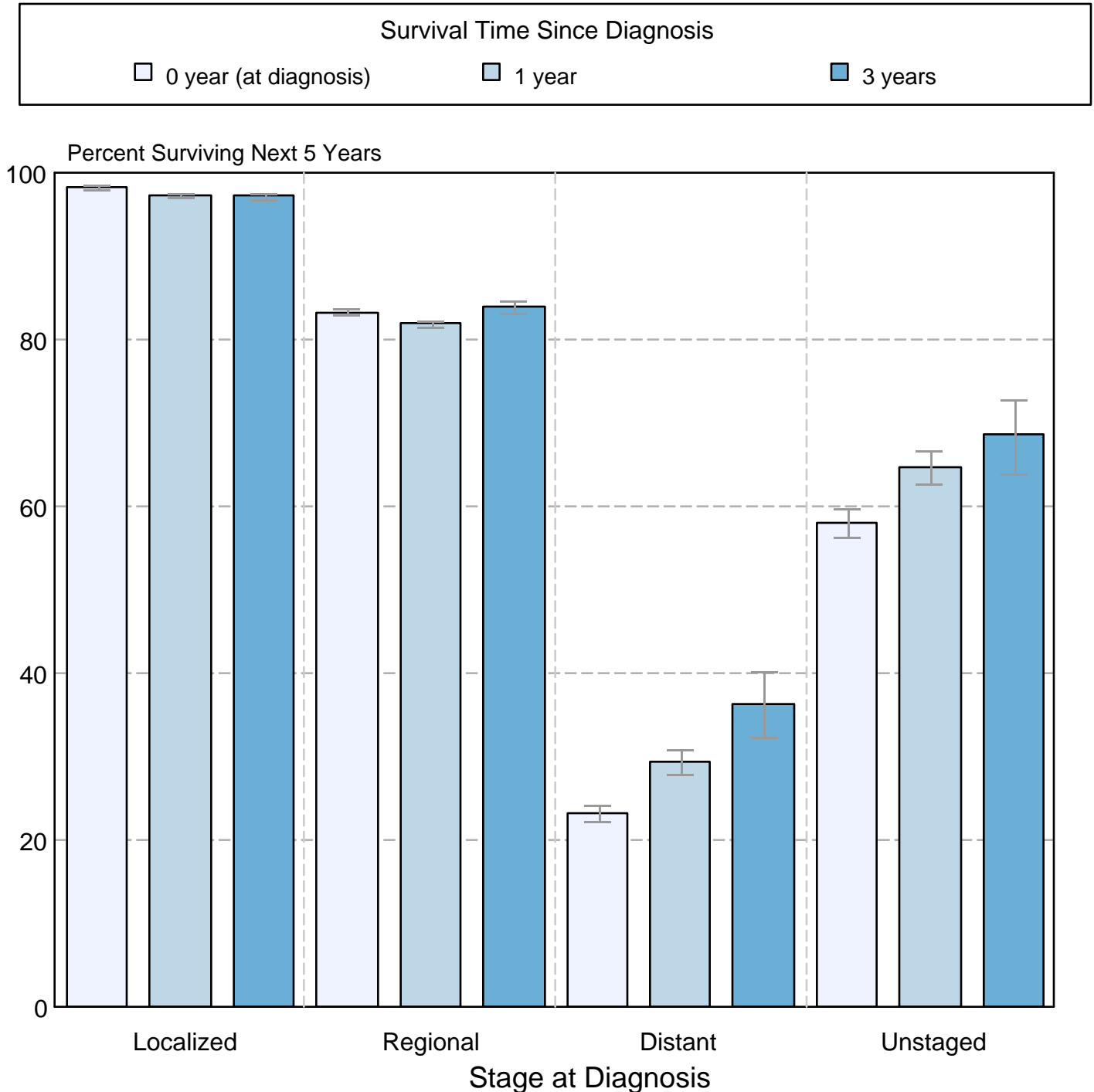
^a Source: SEER 9 areas and SEER 13 areas.
Rates are age-adjusted to the 2000 US Std Population (19 age groups - Census P25-1103).
Regression lines and APCs are calculated using the Joinpoint Regression Program Version 3.3.1, April 2008, National Cancer Institute.
The APC is the Annual Percent Change for the regression line segments. The APC shown on the graph is for the most recent trend.
* The APC is significantly different from zero ($p < 0.05$).

Figure 4.11

Cancer of the Female Breast

5-Year SEER Conditional Relative Survival Rates and 95% Confidence Intervals

Probability of surviving the next 5 years given the cohort
has already survived 0, 1, or 3 years
1998-2005 by stage at diagnosis



Source: SEER 17 areas (San Francisco, Connecticut, Detroit, Hawaii, Iowa, New Mexico, Seattle, Utah, Atlanta, San Jose-Monterey, Los Angeles, Alaska Native Registry, Rural Georgia, California excluding SF/SJM/LA, Kentucky, Louisiana, and New Jersey). California excluding SF/SJM/LA, Kentucky, Louisiana, and New Jersey contribute cases for diagnosis years 2000-2006. The remaining 13 SEER Areas contribute cases for the entire period 1998-2005. Percent surviving is not shown if based on less than 25 cases. Confidence intervals are not shown if length of the confidence interval is greater than 5 times the standard error.