

Table XXIII-1  
PROSTATE CANCER (Invasive)

TRENDS IN SEER INCIDENCE<sup>a</sup> AND U.S. MORTALITY<sup>b</sup> USING THE JOINTPOINT REGRESSION PROGRAM, 1975-2005  
WITH UP TO THREE JOINTPOINTS BY RACE AND AGE

		Jointpoint Trend 1		Jointpoint Trend 2		Jointpoint Trend 3		Jointpoint Trend 4		AAPC <sup>c</sup>	
		Years	APC	Years	APC	Years	APC	Years	APC	1996-2005	2001-2005
<u>SEER Cancer Incidence<sup>a</sup></u>											
All Races	All Ages	1975-1988	2.6*	1988-1992	16.1*	1992-1995	-9.5	1995-2005	-0.4	-0.4	-0.4
All Races	Under 65	1975-1988	3.1*	1988-1992	23.4*	1992-2002	3.3*	2002-2005	-4.6*	0.6	-2.7*
All Races	65 and Over	1975-1988	2.5*	1988-1992	14.8*	1992-1995	-13.0*	1995-2005	-1.3*	-1.3*	-1.3*
White	All Ages	1975-1988	2.8*	1988-1992	15.9*	1992-1995	-10.3	1995-2005	-0.4	-0.4	-0.4
White	Under 65	1975-1988	3.5*	1988-1992	23.0*	1992-2002	3.1*	2002-2005	-5.1*	0.3	-3.1*
White	65 and Over	1975-1987	2.3*	1987-1992	12.5*	1992-1995	-13.3*	1995-2005	-1.2*	-1.2*	-1.2*
Black	All Ages	1975-1989	2.1*	1989-1992	19.7*	1992-2005	-2.3*			-2.3*	-2.3*
Black	Under 65	1975-1989	2.0*	1989-1993	25.8*	1993-2002	2.6*	2002-2005	-5.0*	0.0	-3.2*
Black	65 and Over	1975-1989	2.0*	1989-1992	20.0*	1992-1995	-8.7	1995-2005	-3.1*	-3.1*	-3.1*
<u>SEER Delay-Adjusted Incidence<sup>a</sup></u>											
All Races	All Ages	1975-1988	2.6*	1988-1992	16.1*	1992-1995	-9.6	1995-2005	-0.2	-0.2	-0.2
All Races	Under 65	1975-1988	3.1*	1988-1992	23.3*	1992-2002	3.4*	2002-2005	-4.0*	0.8	-2.2
All Races	65 and Over	1975-1988	2.5*	1988-1992	14.8*	1992-1995	-13.1*	1995-2005	-1.0*	-1.0*	-1.0*
White	All Ages	1975-1988	2.8*	1988-1992	16.0*	1992-1995	-10.5	1995-2005	0.1	0.1	0.1
White	Under 65	1975-1988	3.5*	1988-1992	23.0*	1992-2002	3.2*	2002-2005	-4.1*	0.7	-2.3
White	65 and Over	1975-1987	2.3*	1987-1992	12.6*	1992-1995	-13.5*	1995-2005	-0.7	-0.7	-0.7
Black	All Ages	1975-1989	2.1*	1989-1992	19.4*	1992-2005	-1.9*			-1.9*	-1.9*
Black	Under 65	1975-1989	2.0*	1989-1993	25.9*	1993-2002	2.9*	2002-2005	-3.8	0.6	-2.2
Black	65 and Over	1975-1989	2.0*	1989-1992	20.2*	1992-1995	-8.9	1995-2005	-2.6*	-2.6*	-2.6*
<u>U.S. Cancer Mortality<sup>b</sup></u>											
All Races	All Ages	1975-1987	0.9*	1987-1991	3.0*	1991-1994	-0.6	1994-2005	-4.1*	-4.1*	-4.1*
All Races	Under 65	1975-1992	0.8*	1992-2000	-4.6*	2000-2005	-2.0*			-3.2*	-2.0*
All Races	65 and Over	1975-1987	0.9*	1987-1991	3.1*	1991-1994	-0.3	1994-2005	-4.1*	-4.1*	-4.1*
White	All Ages	1975-1987	0.8*	1987-1991	3.1*	1991-1994	-0.9	1994-2005	-4.1*	-4.1*	-4.1*
White	Under 65	1975-1987	0.7*	1987-1990	3.6	1990-2001	-4.4*	2001-2005	-1.7	-3.2*	-1.7
White	65 and Over	1975-1987	0.8*	1987-1991	3.2*	1991-1994	-0.6	1994-2005	-4.1*	-4.1*	-4.1*
Black	All Ages	1975-1988	1.9*	1988-1993	3.2*	1993-2000	-2.6*	2000-2005	-5.0*	-3.9*	-5.0*
Black	Under 65	1975-1992	0.5*	1992-2005	-2.9*					-2.9*	-2.9*
Black	65 and Over	1975-1988	2.1*	1988-1993	3.4*	1993-2000	-2.5*	2000-2005	-5.2*	-4.0*	-5.2*

Jointpoint Regression Program Version 3.3.1, April 2008, National Cancer Institute. (<http://srab.cancer.gov/joinpoint/>).  
 The APC is the Annual Percent Change based on rates age-adjusted to the 2000 US Std Population (19 age groups - Census P25-1130).  
 Trends are from the SEER 9 areas (San Francisco, Connecticut, Detroit, Hawaii, Iowa, New Mexico, Seattle, Utah, and Atlanta).  
 Trends are from US Mortality Files, National Center for Health Statistics, Centers for Disease Control and Prevention.  
 The AAPC is the Average Annual Percent Change and is based on the APCs calculated by Jointpoint over the time range of 1975-2005.  
 The APC/AAPC is significantly different from zero ( $p < .05$ ).

a  
b  
c  
\*

Table XXIII-1a  
PROSTATE CANCER (Invasive)

TRENDS IN SEER INCIDENCE<sup>a</sup> AND U.S. MORTALITY<sup>b</sup> USING THE JOINTPOINT REGRESSION PROGRAM, 1975-2005  
 WITH UP TO FOUR JOINTPOINTS BY RACE AND AGE

		Jointpoint Trend 1		Jointpoint Trend 2		Jointpoint Trend 3		Jointpoint Trend 4		Jointpoint Trend 5		AAPC <sup>c</sup>
		Years	APC	Years	APC	Years	APC	Years	APC	Years	APC	2001-2005
<u>SEER Cancer Incidence<sup>a</sup></u>												
All Races	All Ages	1975-1988	2.6*	1988-1992	16.5*	1992-1995	-11.6*	1995-2001	2.0*	2001-2005	-4.9*	-4.9*
All Races	Under 65	1975-1985	2.4*	1985-1989	7.7*	1989-1992	25.6*	1992-2002	3.2*	2002-2005	-4.5*	-2.7*
All Races	65 and Over	1975-1988	2.5*	1988-1992	15.1*	1992-1995	-14.8*	1995-2001	1.0	2001-2005	-5.6*	-5.6*
White	All Ages	1975-1988	2.8*	1988-1992	16.3*	1992-1995	-12.6*	1995-2001	2.4*	2001-2005	-5.3*	-5.3*
White	Under 65	1975-1985	2.5*	1985-1989	8.8*	1989-1992	24.5*	1992-2002	3.0*	2002-2005	-5.0*	-3.1*
White	65 and Over	1975-1988	2.7*	1988-1992	14.9*	1992-1995	-15.8*	1995-2001	1.5	2001-2005	-6.1*	-6.1*
Black	All Ages	1975-1989	2.0*	1989-1992	22.0*	1992-1995	-5.9	1995-2002	-0.5	2002-2005	-6.0*	-4.7*
Black	Under 65	1975-1989	2.0*	1989-1993	25.8*	1993-2002	2.6*	2002-2005	-5.0*			-3.2*
Black	65 and Over	1975-1989	2.0*	1989-1992	20.4*	1992-1995	-10.1*	1995-2000	-1.3	2000-2005	-5.1*	-5.1*
<u>SEER Delay-Adjusted Incidence<sup>a</sup></u>												
All Races	All Ages	1975-1988	2.6*	1988-1992	16.5*	1992-1995	-11.5*	1995-2001	2.1*	2001-2005	-4.4*	-4.4*
All Races	Under 65	1975-1985	2.4*	1985-1989	7.7*	1989-1992	25.6*	1992-2002	3.3*	2002-2005	-4.0*	-2.2*
All Races	65 and Over	1975-1988	2.5*	1988-1992	15.1*	1992-1995	-14.8*	1995-2001	1.1	2001-2005	-5.1*	-5.1*
White	All Ages	1975-1988	2.8*	1988-1992	16.3*	1992-1995	-12.5*	1995-2001	2.6*	2001-2005	-4.5*	-4.5*
White	Under 65	1975-1985	2.5*	1985-1989	8.9*	1989-1992	24.4*	1992-2002	3.2*	2002-2005	-4.0*	-2.3
White	65 and Over	1975-1988	2.7*	1988-1992	14.9*	1992-1995	-15.7*	1995-2001	1.7*	2001-2005	-5.2*	-5.2*
Black	All Ages	1975-1989	2.0*	1989-1992	22.1*	1992-1995	-5.9	1995-2002	-0.2	2002-2005	-4.8*	-3.7*
Black	Under 65	1975-1989	2.0*	1989-1993	25.9*	1993-2002	2.9*	2002-2005	-3.8			-2.2
Black	65 and Over	1975-1989	2.0*	1989-1992	20.2*	1992-1995	-8.9	1995-2005	-2.6*			-2.6*
<u>U.S. Cancer Mortality<sup>b</sup></u>												
All Races	All Ages	1975-1987	0.9*	1987-1991	3.0*	1991-1994	-0.6	1994-2005	-4.1*			-4.1*
All Races	Under 65	1975-1987	0.5*	1987-1990	3.1	1990-1996	-3.2*	1996-2000	-5.5*	2000-2005	-1.7*	-1.7*
All Races	65 and Over	1975-1987	0.9*	1987-1991	3.1*	1991-1994	-0.3	1994-2005	-4.1*			-4.1*
White	All Ages	1975-1987	0.8*	1987-1991	3.1*	1991-1994	-0.9	1994-2005	-4.1*			-4.1*
White	Under 65	1975-1987	0.7*	1987-1990	2.9	1990-1996	-3.5*	1996-1999	-6.9*	1999-2005	-2.0*	-2.0*
White	65 and Over	1975-1987	0.8*	1987-1991	3.2*	1991-1994	-0.6	1994-2005	-4.1*			-4.1*
Black	All Ages	1975-1988	1.9*	1988-1993	3.2*	1993-2000	-2.6*	2000-2005	-5.0*			-5.0*
Black	Under 65	1975-1992	0.5*	1992-2005	-2.9*							-2.9*
Black	65 and Over	1975-1988	2.1*	1988-1993	3.4*	1993-2000	-2.5*	2000-2005	-5.2*			-5.2*

Jointpoint Regression Program Version 3.3.1, April 2008, National Cancer Institute. (<http://srab.cancer.gov/jointpoint/>).

The APC is the Annual Percent Change based on rates age-adjusted to the 2000 US Std Population (19 age groups - Census P25-1130).

Trends are from the SEER 9 areas (San Francisco, Connecticut, Detroit, Hawaii, Iowa, New Mexico, Seattle, Utah, and Atlanta).

Trends are from US Mortality Files, National Center for Health Statistics, Centers for Disease Control and Prevention.

The AAPC is the Average Annual Percent Change and is based on the APCs calculated by Jointpoint over the time range of 1975-2005.

The APC/AAPC is significantly different from zero ( $p < .05$ ).

a  
b  
c  
\*

Table XXIII-2  
PROSTATE CANCER (Invasive)

AGE ADJUSTED SEER INCIDENCE<sup>a</sup> RATES BY YEAR, RACE AND AGE

	<u>All Races, Males</u>			<u>White Males</u>			<u>Black Males</u>		
	<u>All</u>	<u>&lt;65</u>	<u>65+</u>	<u>All</u>	<u>&lt;65</u>	<u>65+</u>	<u>All</u>	<u>&lt;65</u>	<u>65+</u>
<u>SEER INCIDENCE RATES</u>									
<u>YEAR OF DIAGNOSIS:</u>									
1975	94.0	13.7	649.5	92.2	13.0	639.6	141.0	26.8	930.5
1976	97.9	14.6	674.1	97.3	13.9	673.9	140.8	29.4	910.9
1977	100.5	15.0	691.0	98.6	14.4	680.7	159.2	29.2	1,057.2
1978	99.4	15.2	681.2	97.7	14.8	671.1	148.1	26.8	986.4
1979	103.4	14.9	715.3	102.3	14.6	708.4	162.2	26.2	1,102.1
1980	106.0	15.5	731.7	104.9	14.6	729.2	161.0	33.6	1,041.4
1981	108.9	16.8	745.5	107.9	15.9	743.5	161.7	34.4	1,041.9
1982	108.2	16.3	743.3	107.3	15.7	740.2	167.6	31.3	1,109.8
1983	111.6	17.1	764.6	110.8	16.6	762.2	170.8	34.1	1,116.4
1984	111.7	17.2	764.3	110.1	16.2	759.0	178.8	37.1	1,158.1
1985	115.5	17.8	790.5	114.6	17.5	785.5	170.2	31.4	1,129.4
1986	119.0	18.5	813.6	119.0	18.3	815.1	168.1	33.9	1,095.6
1987	133.6	21.5	908.9	134.5	21.1	918.2	189.2	36.1	1,247.6
1988	137.6	22.2	935.3	138.7	22.3	943.1	190.2	34.7	1,264.9
1989	145.3	24.1	982.8	146.0	24.0	989.8	192.0	37.3	1,261.3
1990	170.8	28.7	1,153.1	172.6	28.8	1,166.5	221.6	44.3	1,447.2
1991	214.7	38.8	1,430.1	216.2	39.2	1,439.7	288.4	57.3	1,885.7
1992	237.2	49.4	1,535.3	238.0	49.4	1,541.4	328.4	77.1	2,065.8
1993	209.3	50.5	1,306.9	204.3	49.1	1,277.2	344.1	94.0	2,072.5
1994	180.0	48.5	1,089.0	174.1	46.8	1,053.6	312.6	94.6	1,819.4
1995	168.6	49.9	989.5	163.8	48.0	964.2	280.3	97.9	1,540.9
1996	168.7	53.3	966.9	164.3	51.8	942.0	281.5	100.3	1,533.7
1997	172.9	55.0	987.4	169.2	53.9	966.3	281.0	96.3	1,557.8
1998	169.9	54.7	966.1	166.2	52.8	950.0	282.9	101.8	1,534.7
1999	182.6	60.6	1,025.6	177.9	58.7	1,001.7	287.4	110.9	1,507.6
2000	181.6	61.5	1,011.3	177.8	59.6	994.9	288.7	113.0	1,503.1
2001	183.1	64.0	1,005.9	180.9	62.0	1,002.6	268.8	113.6	1,341.2
2002	179.9	64.8	975.4	177.0	63.0	964.8	283.4	115.8	1,441.9
2003	167.0	61.0	899.5	163.1	58.6	885.9	253.7	114.3	1,216.8
2004	162.2	60.7	864.0	158.4	58.7	847.7	244.8	103.1	1,224.3
2005	150.5	55.7	805.5	144.9	52.6	782.6	232.3	100.5	1,143.9
1975-2005	150.9	38.2	929.5	148.0	36.6	918.2	233.3	71.7	1,350.3

<sup>a</sup> SEER 9 areas (San Francisco, Connecticut, Detroit, Hawaii, Iowa, New Mexico, Seattle, Utah, and Atlanta). Rates are per 100,000 and are age-adjusted to the 2000 US Std Population (19 age groups - Census P25-1130).

- Statistic not shown. Rate based on less than 16 cases for the time interval.

Table XXIII-3  
PROSTATE CANCER (Invasive)

AGE ADJUSTED U.S. DEATH<sup>a</sup> RATES BY YEAR, RACE AND AGE

	<u>All Races, Males</u>			<u>White Males</u>			<u>Black Males</u>		
	<u>All</u>	<u>&lt;65</u>	<u>65+</u>	<u>All</u>	<u>&lt;65</u>	<u>65+</u>	<u>All</u>	<u>&lt;65</u>	<u>65+</u>
<u>U.S. DEATH RATES</u>									
<u>YEAR OF DEATH:</u>									
1975	31.0	2.5	227.5	29.1	2.2	214.9	55.5	6.6	394.0
1976	31.8	2.7	232.9	29.9	2.3	220.8	55.6	6.9	392.2
1977	31.8	2.7	233.3	29.9	2.3	220.6	56.4	6.9	398.7
1978	32.7	2.6	240.3	30.6	2.2	226.8	58.5	6.8	416.1
1979	32.8	2.6	242.1	30.8	2.2	228.2	59.2	6.6	422.9
1980	33.1	2.7	243.1	30.8	2.3	227.4	62.0	6.6	445.0
1981	33.2	2.7	244.0	30.8	2.3	227.5	63.6	7.1	454.4
1982	33.4	2.7	245.5	31.1	2.3	229.8	62.4	6.6	447.7
1983	33.9	2.8	249.3	31.6	2.4	233.2	64.6	7.0	462.5
1984	34.1	2.7	250.8	31.6	2.4	233.5	65.9	6.7	475.1
1985	33.9	2.7	249.4	31.3	2.3	231.3	67.3	7.2	482.7
1986	34.9	2.8	257.0	32.5	2.5	239.7	67.4	6.6	487.4
1987	35.1	2.7	259.1	32.6	2.4	241.3	68.9	6.7	499.0
1988	35.9	2.8	264.4	33.4	2.5	247.1	69.6	7.0	502.3
1989	37.1	3.0	273.0	34.5	2.6	255.2	71.7	7.1	518.5
1990	38.6	3.0	284.2	35.7	2.6	264.0	78.0	7.4	565.6
1991	39.3	2.9	291.1	36.5	2.5	271.4	78.2	7.1	570.2
1992	39.2	2.9	290.6	36.3	2.4	270.3	79.8	7.7	578.7
1993	39.3	2.7	292.5	36.3	2.3	270.8	81.9	7.0	599.1
1994	38.5	2.7	286.5	35.6	2.3	266.0	80.0	6.8	585.9
1995	37.3	2.6	277.2	34.4	2.2	256.9	78.2	6.7	572.5
1996	36.0	2.5	267.6	33.0	2.1	246.4	78.8	6.5	579.2
1997	34.2	2.3	254.3	31.3	1.9	234.6	74.3	6.3	544.2
1998	32.6	2.3	242.5	29.9	1.9	223.4	72.8	6.3	532.4
1999	31.6	2.1	235.5	28.9	1.7	216.9	70.1	5.8	514.8
2000	30.3	2.0	226.1	27.7	1.7	207.7	68.7	5.4	505.8
2001	29.2	1.9	217.4	26.7	1.6	199.7	66.5	5.4	488.9
2002	28.2	1.9	209.6	25.9	1.6	193.9	63.0	5.4	461.2
2003	26.6	1.9	197.0	24.5	1.6	182.7	58.0	5.4	421.3
2004	25.5	1.8	189.2	23.5	1.6	175.0	56.2	5.0	410.3
2005	24.6	1.8	182.5	22.7	1.5	169.1	54.0	5.0	392.8
1975-2005	33.2	2.5	245.5	30.7	2.1	228.3	67.8	6.4	492.4

<sup>a</sup> US Mortality Files, National Center for Health Statistics, Centers for Disease Control and Prevention. Rates are per 100,000 and are age-adjusted to the 2000 US Std Population (19 age groups - Census P25-1130).

- Statistic not shown. Rate based on less than 16 cases for the time interval.

Table XXIII-4  
PROSTATE CANCER (Invasive)

SEER INCIDENCE<sup>a</sup> AND U.S. DEATH<sup>b</sup> RATES, AGE-ADJUSTED AND AGE-SPECIFIC RATES, BY RACE

	Incidence <sup>a</sup>			US Death <sup>b</sup>		
	All Races, Males	White Males	Black Males	All Races, Males	White Males	Black Males
<u>AGE-ADJUSTED RATES, 2001-2005</u>						
AGE AT DIAGNOSIS/DEATH:						
All ages	163.0	156.7	248.5	26.7	24.6	59.4
Under 65	57.7	55.3	102.7	1.9	1.6	5.2
65 and over	890.8	857.7	1,256.4	198.6	183.6	433.6
All ages(IARC world std) <sup>c</sup>	109.1	105.1	171.5	11.5	10.4	26.9
<u>AGE-SPECIFIC RATES, 2001-2005</u>						
AGE AT DIAGNOSIS/DEATH:						
<1	-	-	-	-	-	-
1-4	-	-	-	-	-	-
5-9	-	-	-	-	-	-
10-14	-	-	-	-	-	-
15-19	-	-	-	-	-	-
20-24	-	-	-	-	-	-
25-29	-	-	-	-	-	-
30-34	-	-	-	-	-	-
35-39	0.8	0.7	1.6	-	-	-
40-44	8.7	7.4	21.9	0.2	0.2	0.5
45-49	40.2	36.3	88.4	0.9	0.7	2.4
50-54	136.4	129.7	255.4	3.3	2.7	9.7
55-59	328.2	314.8	591.4	9.1	7.6	25.2
60-64	573.9	556.4	945.0	23.5	19.9	64.8
65-69	877.4	854.2	1,320.4	50.1	43.7	127.9
70-74	983.7	957.1	1,373.9	98.7	87.4	253.3
75-79	970.8	929.2	1,335.0	183.3	166.5	439.2
80-84	816.3	765.0	1,081.2	324.3	301.1	722.5
85+	676.3	643.7	939.3	613.5	584.6	1,136.3

<sup>a</sup> SEER 17 areas. Rates are per 100,000 and are age-adjusted to the 2000 US Std Population (19 age groups - Census P25-1130), unless noted.

<sup>b</sup> US Mortality Files, National Center for Health Statistics, Centers for Disease Control and Prevention. Rates are per 100,000 and are age-adjusted to the 2000 US Std Population (19 age groups - Census P25-1130), unless noted.

<sup>c</sup> Rates are per 100,000 and are age-adjusted to the IARC world standard population.

- Statistic not shown. Rate based on less than 16 cases for the time interval.

Table XXIII-5  
PROSTATE CANCER (Invasive)

SURVIVAL RATES, BY RACE, DIAGNOSIS YEAR, STAGE AND AGE

	All Races, Males			White Males			Black Males		
	All	<65	65+	All	<65	65+	All	<65	65+
<u>5-YR RELATIVE SURVIVAL RATES</u>									
YEAR OF DIAGNOSIS:									
1960-1963 <sup>a</sup>	-	-	-	50	-	-	35	-	-
1970-1973 <sup>a</sup>	-	-	-	63	-	-	55	-	-
1975-1977 <sup>b</sup>	68.9	73.4	67.3	69.8	75.2	67.8	61.3	61.9	61.0
1978-1980 <sup>b</sup>	72.0	75.7	70.6	73.2	77.2	71.8	62.8	65.3	61.5
1981-1983 <sup>b</sup>	73.8	76.4	72.8	74.9	78.0	73.9	63.7	65.4	62.9
1984-1986 <sup>b</sup>	76.1	77.5	75.6	77.3	79.1	76.7	66.3	67.3	65.8
1987-1989 <sup>b</sup>	83.9	83.4	84.0	85.4	84.8	85.6	72.2	72.9	72.0
1990-1992 <sup>b</sup>	94.2	93.4	94.4	95.3	94.4	95.6	85.5	87.0	84.9
1993-1995 <sup>b</sup>	95.4	95.8	95.2	96.2	96.5	96.0	91.5	92.9	90.5
1996-2004 <sup>b</sup>	98.9 <sup>e</sup>	99.2 <sup>e</sup>	99.1 <sup>e</sup>	99.4 <sup>e</sup>	99.5 <sup>e</sup>	99.6 <sup>e</sup>	95.9 <sup>e</sup>	98.0 <sup>e</sup>	94.3 <sup>e</sup>
<u>5-YR PERIOD SURVIVAL RATES<sup>cd</sup></u>									
YEAR OF DIAGNOSIS:									
1996-2004	99.9	99.3	99.8	99.9	99.7	99.8	96.3	97.9	94.5
<u>STAGE DISTRIBUTION (%) 1996-2004<sup>c</sup></u>									
All Stages									
Number of cases	324,062	118,154	205,908	258,296	92,400	165,896	40,796	18,954	21,842
Percent	100%	100%	100%	100%	100%	100%	100%	100%	100%
Localized/Regional	91	95	89	92	95	90	89	93	86
Distant	4	3	5	4	3	5	6	5	8
Unstaged	4	2	5	4	2	5	5	3	7
<u>5-YR RELATIVE SURVIVAL RATES, 1996-2004<sup>c</sup></u>									
AGE AT DIAGNOSIS:									
<45	94.5	-	-	94.0	-	-	95.5	-	-
45-54	97.5	-	-	97.8	-	-	96.5	-	-
55-64	99.5	-	-	99.7	-	-	98.2	-	-
65-74	100.0	-	-	100.0	-	-	96.7	-	-
75+	96.0	-	-	96.6	-	-	85.7	-	-
Under 65	99.0	-	-	99.3	-	-	97.6	-	-
65 and over	99.3	-	-	99.7	-	-	93.6	-	-
STAGE:									
All Stages	98.9	99.0	99.3	99.5	99.3	99.7	95.4	97.6	93.6
Localized/Regional	100.0	100.0	100.0	100.0	100.0	100.0	100.0	100.0	100.0
Distant	31.7	32.0	31.7	30.9	32.0	30.6	29.4	28.3	30.1
Unstaged	79.4	88.7	76.8	79.1	89.6	76.2	72.2	83.2	67.3

<sup>a</sup> Rates are based on End Results data from a series of hospital registries and one population-based registry.  
<sup>b</sup> Rates are from the SEER 9 areas (San Francisco, Connecticut, Detroit, Hawaii, Iowa, New Mexico, Seattle, Utah, Atlanta).  
Rates are based on follow-up of patients into 2005.  
<sup>c</sup> Rates are from the SEER 17 areas (San Francisco, Connecticut, Detroit, Hawaii, Iowa, New Mexico, Seattle, Utah, Atlanta, San Jose-Monterey, Los Angeles, Alaska Native Registry, Rural Georgia, California excluding SF/SJM/LA, Kentucky, Louisiana and New Jersey). California excluding SF/SJM/LA, Kentucky, Louisiana, and New Jersey contribute cases for diagnosis years 2000-2004. The remaining 13 SEER Areas contribute cases for the entire period 1996-2004. Rates are based on follow-up of patients into 2005.  
<sup>d</sup> Period survival provides a more up-to-date estimate of survival by piecing together the most recent conditional survival estimates from several cohorts. It is computed here using three calendar year blocks (2002-2004: 0-1 year survival), (2001-2003: 1-2 year survival), (2000-2002: 2-3 year survival), (1999-2001: 3-4 year survival), (1998-2000: 4-5 years survival).  
<sup>e</sup> The difference in rates between 1975-1977 and 1996-2004 is statistically significant (p<.05).  
<sup>f</sup> The standard error of the survival rate is between 5 and 10 percentage points.  
<sup>g</sup> The standard error of the survival rate is greater than 10 percentage points.  
- Statistic could not be calculated due to fewer than 16 cases during the time period.

Table XXIII-6  
PROSTATE CANCER (Invasive)

SURVIVAL RATES<sup>a</sup>

By Year of Diagnosis

All Races, Males

Year of Diagnosis

	1975- 1979	1980- 1984	1985	1986	1987	1988	1989	1990	1991	1992	1993	1994	1995	1996	1997	1998	1999	2000	2001	2002	2003	2004
Relative Survival Rates (SEER <sup>b</sup> )																						
1-year	91.9	94.2	95.0	95.0	95.6	96.4	97.0	97.7	99.0	99.6	99.6	99.5	99.0	99.1	99.3	99.5	99.7	99.9	100.0	99.9	99.9	100.0
2-year	85.2	88.5	88.7	89.5	91.6	92.9	93.9	95.0	97.7	98.9	98.8	98.5	97.7	97.9	98.7	98.9	99.6	99.6	100.0	99.9	99.9	
3-year	79.1	82.8	83.7	84.4	87.4	89.1	90.7	92.9	96.6	98.6	97.7	97.0	96.9	97.2	98.3	98.4	99.6	99.3	100.0	99.9		
4-year	74.2	77.8	79.3	80.6	84.1	86.4	88.3	91.1	95.5	98.0	96.9	95.7	96.2	96.7	97.9	98.3	99.3	99.2	100.0			
5-year	70.1	73.6	75.8	78.0	81.3	84.2	85.9	90.0	94.1	96.9	95.7	94.9	95.5	96.3	97.6	98.3	99.3	99.2				
6-year	67.0	70.2	73.0	75.0	79.0	82.0	84.0	88.6	92.4	95.5	94.8	94.2	95.2	96.0	97.6	98.3	99.3					
7-year	63.8	66.8	70.9	73.0	76.6	79.3	82.2	86.2	91.5	94.4	93.6	93.3	94.9	95.6	97.6	98.3						
8-year	60.9	64.0	68.6	71.6	74.8	77.4	80.4	84.5	90.3	93.0	93.0	92.8	94.9	95.4	97.6							
9-year	58.4	62.0	66.7	69.3	73.1	75.5	78.6	83.1	89.2	92.1	91.9	92.2	94.8	95.3								
10-year	56.1	60.4	64.7	67.2	71.1	73.7	77.3	81.4	88.3	91.1	91.1	92.0	94.6									
11-year	53.7	58.5	62.2	65.4	69.2	72.8	76.0	79.9	87.0	90.7	90.8	91.2										
12-year	51.7	56.8	59.6	63.2	67.9	70.7	74.4	79.1	86.4	90.1	89.9											
13-year	50.1	55.2	58.3	61.8	66.4	68.8	72.6	78.6	85.6	89.7												
14-year	48.7	53.7	55.7	60.5	65.2	68.3	71.3	77.7	85.6													
15-year	47.7	52.6	53.8	58.5	64.1	67.3	69.7	77.2														
16-year	46.2	50.7	51.6	57.1	63.1	66.3	68.9															
17-year	44.8	49.7	50.8	57.1	62.7	65.8																
18-year	43.6	48.4	50.1	56.8	61.8																	
19-year	43.0	47.2	49.7	55.9																		
20-year	42.0	45.9	49.4																			

<sup>a</sup> Survival rates are relative rates expressed as percents.

<sup>b</sup> Rates are from the SEER 9 areas (San Francisco, Connecticut, Detroit, Hawaii, Iowa, New Mexico, Seattle, Utah, and Atlanta).

Table XXIII-7  
 PROSTATE CANCER (Invasive)

Risk of Being Diagnosed With Cancer in 10, 20 and 30 Years, Lifetime Risk of Being Diagnosed with Cancer, and  
 Lifetime Risk of Dying from Cancer Given Cancer Free At Current Age  
 2003-2005 By Race/Ethnicity

Race/ Ethnicity	Current Age	Risk of Being Diagnosed with Cancer			Risk of Dying from Cancer	
		+10 yrs Percent ( 95% C.I. )	+20 yrs Percent ( 95% C.I. )	+30 yrs Percent ( 95% C.I. )	Eventually Percent ( 95% C.I. )	Eventually Percent ( 95% C.I. )
All Races	0	0.00 ( 0.00, 0.00 )	0.00 ( 0.00, 0.00 )	0.00 ( 0.00, 0.00 )	15.78 ( 15.69, 15.86 )	2.83 ( 2.81, 2.85 )
	10	0.00 ( 0.00, 0.00 )	0.00 ( 0.00, 0.00 )	0.01 ( 0.01, 0.01 )	15.99 ( 15.90, 16.08 )	2.87 ( 2.85, 2.89 )
	20	0.00 ( 0.00, 0.00 )	0.01 ( 0.01, 0.01 )	0.29 ( 0.28, 0.29 )	16.08 ( 15.99, 16.17 )	2.89 ( 2.87, 2.91 )
	30	0.01 ( 0.01, 0.01 )	0.29 ( 0.29, 0.30 )	2.39 ( 2.37, 2.42 )	16.30 ( 16.21, 16.38 )	2.93 ( 2.91, 2.95 )
	40	0.29 ( 0.28, 0.29 )	2.43 ( 2.40, 2.45 )	8.02 ( 7.97, 8.07 )	16.56 ( 16.48, 16.65 )	2.98 ( 2.96, 3.00 )
	50	2.22 ( 2.20, 2.25 )	8.04 ( 7.98, 8.09 )	13.97 ( 13.89, 14.05 )	16.92 ( 16.83, 17.01 )	3.09 ( 3.06, 3.11 )
	60	6.42 ( 6.37, 6.47 )	12.98 ( 12.90, 13.06 )	15.74 ( 15.64, 15.83 )	16.24 ( 16.14, 16.34 )	3.28 ( 3.25, 3.30 )
	70	8.34 ( 8.27, 8.41 )	11.85 ( 11.76, 11.94 )	- ( - , - )	12.49 ( 12.39, 12.58 )	3.52 ( 3.50, 3.55 )
80	5.85 ( 5.77, 5.93 )	- ( - , - )	- ( - , - )	6.91 ( 6.82, 7.01 )	3.72 ( 3.69, 3.76 )	
White	0	0.00 ( 0.00, 0.00 )	0.00 ( 0.00, 0.00 )	0.00 ( 0.00, 0.00 )	15.25 ( 15.16, 15.34 )	2.65 ( 2.63, 2.67 )
	10	0.00 ( 0.00, 0.00 )	0.00 ( 0.00, 0.00 )	0.01 ( 0.01, 0.01 )	15.43 ( 15.33, 15.52 )	2.69 ( 2.67, 2.71 )
	20	0.00 ( 0.00, 0.00 )	0.01 ( 0.01, 0.01 )	0.26 ( 0.26, 0.27 )	15.51 ( 15.42, 15.60 )	2.70 ( 2.68, 2.72 )
	30	0.01 ( 0.01, 0.01 )	0.27 ( 0.26, 0.27 )	2.28 ( 2.26, 2.31 )	15.70 ( 15.61, 15.80 )	2.74 ( 2.72, 2.76 )
	40	0.26 ( 0.26, 0.27 )	2.31 ( 2.29, 2.34 )	7.76 ( 7.70, 7.81 )	15.95 ( 15.85, 16.04 )	2.78 ( 2.76, 2.80 )
	50	2.13 ( 2.10, 2.15 )	7.77 ( 7.72, 7.83 )	13.52 ( 13.43, 13.61 )	16.27 ( 16.17, 16.37 )	2.88 ( 2.85, 2.90 )
	60	6.21 ( 6.15, 6.26 )	12.53 ( 12.44, 12.61 )	15.10 ( 15.00, 15.20 )	15.55 ( 15.45, 15.65 )	3.04 ( 3.02, 3.07 )
	70	7.99 ( 7.91, 8.06 )	11.23 ( 11.14, 11.33 )	- ( - , - )	11.81 ( 11.70, 11.91 )	3.27 ( 3.25, 3.30 )
80	5.40 ( 5.32, 5.49 )	- ( - , - )	- ( - , - )	6.36 ( 6.26, 6.46 )	3.48 ( 3.44, 3.51 )	
Black	0	0.00 ( 0.00, 0.00 )	0.00 ( 0.00, 0.01 )	0.00 ( 0.00, 0.01 )	18.25 ( 17.96, 18.55 )	4.43 ( 4.35, 4.50 )
	10	0.00 ( 0.00, 0.00 )	0.00 ( 0.00, 0.00 )	0.02 ( 0.02, 0.03 )	18.74 ( 18.44, 19.04 )	4.55 ( 4.48, 4.63 )
	20	0.00 ( 0.00, 0.00 )	0.02 ( 0.02, 0.03 )	0.58 ( 0.55, 0.61 )	18.91 ( 18.61, 19.22 )	4.59 ( 4.51, 4.67 )
	30	0.02 ( 0.02, 0.03 )	0.60 ( 0.57, 0.63 )	4.10 ( 4.00, 4.19 )	19.40 ( 19.10, 19.72 )	4.70 ( 4.62, 4.78 )
	40	0.59 ( 0.56, 0.62 )	4.21 ( 4.11, 4.31 )	11.70 ( 11.50, 11.91 )	20.02 ( 19.70, 20.34 )	4.84 ( 4.76, 4.92 )
	50	3.88 ( 3.78, 3.98 )	11.93 ( 11.72, 12.15 )	18.27 ( 17.97, 18.57 )	20.86 ( 20.53, 21.21 )	5.15 ( 5.06, 5.23 )
	60	9.75 ( 9.53, 9.96 )	17.42 ( 17.09, 17.75 )	20.10 ( 19.73, 20.47 )	20.56 ( 20.18, 20.94 )	5.75 ( 5.65, 5.85 )
	70	11.42 ( 11.11, 11.74 )	15.41 ( 15.01, 15.81 )	- ( - , - )	16.10 ( 15.68, 16.53 )	6.54 ( 6.42, 6.67 )
80	8.17 ( 7.77, 8.59 )	- ( - , - )	- ( - , - )	9.58 ( 9.09, 10.10 )	7.20 ( 7.02, 7.39 )	

Devcan Version 7.0.0, April 2008, National Cancer Institute (<http://srab.cancer.gov/devcan/>).

Source: Incidence data are from the SEER 17 areas (San Francisco, Connecticut, Detroit, Hawaii, Iowa, New Mexico, Seattle, Utah, Atlanta, San Jose-Monterey, Los Angeles, Alaska Native Registry, Rural Georgia, California excluding SF/SJM/LA, Kentucky, Louisiana and New Jersey). Mortality data are from the NCHS public use data file for the total US.

- Statistic could not be calculated.

A percent or confidence interval value of 0.00 represents a value that is below 0.005.



Table XXIII-7 - continued  
 PROSTATE CANCER (Invasive)

Risk of Being Diagnosed With Cancer in 10, 20 and 30 Years, Lifetime Risk of Being Diagnosed with Cancer, and  
 Lifetime Risk of Dying from Cancer Given Cancer Free At Current Age  
 2003-2005 By Race/Ethnicity

Race/ Ethnicity	Current Age	Risk of Being Diagnosed with Cancer				Risk of Dying from Cancer	
		+10 yrs Percent ( 95% C.I. )	+20 yrs Percent ( 95% C.I. )	+30 yrs Percent ( 95% C.I. )	Eventually Percent ( 95% C.I. )	Eventually Percent ( 95% C.I. )	
Asian/ Pacific Islander	0	0.00 ( 0.00, 0.00 )	0.00 ( 0.00, 0.00 )	0.00 ( 0.00, 0.00 )	12.10 ( 11.77, 12.45 )	2.36 ( 2.17, 2.57 )	
	10	0.00 ( 0.00, 0.00 )	0.00 ( 0.00, 0.00 )	0.00 ( 0.00, 0.01 )	12.22 ( 11.88, 12.57 )	2.38 ( 2.19, 2.59 )	
	20	0.00 ( 0.00, 0.00 )	0.00 ( 0.00, 0.01 )	0.10 ( 0.09, 0.11 )	12.26 ( 11.92, 12.62 )	2.39 ( 2.20, 2.60 )	
	30	0.00 ( 0.00, 0.01 )	0.10 ( 0.09, 0.11 )	0.93 ( 0.88, 0.97 )	12.34 ( 12.00, 12.70 )	2.40 ( 2.21, 2.61 )	
	40	0.09 ( 0.08, 0.11 )	0.93 ( 0.88, 0.98 )	4.23 ( 4.09, 4.36 )	12.43 ( 12.09, 12.79 )	2.42 ( 2.22, 2.63 )	
	50	0.85 ( 0.80, 0.90 )	4.21 ( 4.07, 4.35 )	8.93 ( 8.70, 9.16 )	12.57 ( 12.22, 12.93 )	2.45 ( 2.26, 2.67 )	
	60	3.54 ( 3.41, 3.66 )	8.50 ( 8.27, 8.74 )	11.32 ( 11.02, 11.62 )	12.33 ( 11.97, 12.71 )	2.53 ( 2.32, 2.75 )	
	70	5.70 ( 5.50, 5.91 )	8.94 ( 8.65, 9.25 )	- ( - , - )	10.11 ( 9.73, 10.50 )	2.66 ( 2.43, 2.90 )	
80	4.49 ( 4.24, 4.76 )	- ( - , - )	- ( - , - )	6.10 ( 5.69, 6.54 )	2.80 ( 2.53, 3.11 )		
American Indian/ Alaska Native <sup>a</sup>	0	0.00 ( 0.00, 0.05 )	0.00 ( 0.00, 0.05 )	0.00 ( 0.00, 0.05 )	7.12 ( 6.28, 8.27 )	2.29 ( 1.94, 2.73 )	
	10	0.00 ( 0.00, 0.02 )	0.00 ( 0.00, 0.02 )	0.01 ( 0.00, 0.04 )	7.27 ( 6.42, 8.45 )	2.34 ( 1.98, 2.79 )	
	20	0.00 ( 0.00, 0.02 )	0.01 ( 0.00, 0.04 )	0.10 ( 0.06, 0.16 )	7.35 ( 6.48, 8.54 )	2.36 ( 2.00, 2.82 )	
	30	0.01 ( 0.00, 0.04 )	0.10 ( 0.06, 0.16 )	0.89 ( 0.73, 1.08 )	7.52 ( 6.63, 8.73 )	2.43 ( 2.05, 2.90 )	
	40	0.10 ( 0.06, 0.15 )	0.91 ( 0.74, 1.11 )	3.40 ( 2.96, 3.88 )	7.78 ( 6.86, 9.03 )	2.52 ( 2.14, 3.02 )	
	50	0.86 ( 0.70, 1.06 )	3.49 ( 3.03, 3.99 )	6.11 ( 5.41, 6.88 )	8.11 ( 7.15, 9.44 )	2.69 ( 2.27, 3.21 )	
	60	2.91 ( 2.47, 3.40 )	5.81 ( 5.07, 6.62 )	7.53 ( 6.59, 8.59 )	8.02 ( 6.99, 9.47 )	2.95 ( 2.49, 3.54 )	
	70	3.57 ( 2.94, 4.30 )	5.69 ( 4.74, 6.80 )	- ( - , - )	6.30 ( 5.21, 7.92 )	3.28 ( 2.72, 4.00 )	
80	3.25 ( 2.34, 4.43 )	- ( - , - )	- ( - , - )	4.19 ( 2.97, 6.34 )	3.61 ( 2.83, 4.66 )		
Hispanic <sup>b</sup>	0	0.00 ( 0.00, 0.00 )	0.00 ( 0.00, 0.00 )	0.00 ( 0.00, 0.00 )	15.50 ( 15.18, 15.84 )	3.07 ( 2.94, 3.21 )	
	10	0.00 ( 0.00, 0.00 )	0.00 ( 0.00, 0.00 )	0.00 ( 0.00, 0.01 )	15.69 ( 15.36, 16.03 )	3.11 ( 2.98, 3.25 )	
	20	0.00 ( 0.00, 0.00 )	0.00 ( 0.00, 0.01 )	0.17 ( 0.16, 0.18 )	15.78 ( 15.45, 16.13 )	3.13 ( 3.00, 3.27 )	
	30	0.00 ( 0.00, 0.01 )	0.17 ( 0.16, 0.18 )	1.61 ( 1.56, 1.67 )	15.97 ( 15.63, 16.32 )	3.17 ( 3.03, 3.31 )	
	40	0.17 ( 0.16, 0.18 )	1.63 ( 1.58, 1.68 )	6.47 ( 6.32, 6.61 )	16.18 ( 15.84, 16.54 )	3.21 ( 3.07, 3.36 )	
	50	1.51 ( 1.46, 1.56 )	6.50 ( 6.35, 6.65 )	12.60 ( 12.35, 12.84 )	16.52 ( 16.17, 16.89 )	3.30 ( 3.16, 3.45 )	
	60	5.40 ( 5.26, 5.54 )	12.00 ( 11.75, 12.25 )	15.36 ( 15.04, 15.69 )	16.24 ( 15.87, 16.63 )	3.47 ( 3.32, 3.63 )	
	70	8.01 ( 7.79, 8.24 )	12.10 ( 11.77, 12.44 )	- ( - , - )	13.17 ( 12.77, 13.59 )	3.68 ( 3.51, 3.86 )	
80	6.20 ( 5.89, 6.53 )	- ( - , - )	- ( - , - )	7.82 ( 7.36, 8.33 )	3.86 ( 3.63, 4.10 )		

Devcan Version 7.0.0, April 2008, National Cancer Institute (<http://srab.cancer.gov/devcan/>).

Source: Incidence data are from the SEER 17 areas (San Francisco, Connecticut, Detroit, Hawaii, Iowa, New Mexico, Seattle, Utah, Atlanta, San Jose-Monterey, Los Angeles, Alaska Native Registry, Rural Georgia, California excluding SF/SJM/LA, Kentucky, Louisiana and New Jersey). Mortality data are from the NCHS public use data file for the total US.

<sup>a</sup> Underlying incidence and mortality data for American Indian/Alaska Native are based on the CHSDA (Contract Health Service Delivery Area) counties.

<sup>b</sup> Hispanic is not mutually exclusive from whites, blacks, Asian/Pacific Islanders, and American Indians/Alaska Natives. Underlying incidence data for Hispanics are based on NHIA and exclude cases from the Alaska Native Registry and Kentucky. Underlying mortality data for Hispanics exclude deaths from Minnesota, New Hampshire and North Dakota.

- Statistic could not be calculated.

A percent or confidence interval value of 0.00 represents a value that is below 0.005.

Table XXIII-8  
PROSTATE CANCER (Invasive)

SEER INCIDENCE AND U.S. MORTALITY  
AGE-ADJUSTED RATES AND TRENDS<sup>a</sup>  
By Race/Ethnicity

SEER Incidence	Rate 2001-2005 <sup>b</sup>		Seer 13 Areas <sup>c</sup>		SEER 9 Areas <sup>d</sup>	
	Rate per 100,000 persons		Trend 1996-2005		Trend 1996-2005	
			AAPC (%)		AAPC (%)	
RACE/ETHNICITY	Males		Males		Males	
All Races	163.0		-1.1*		-0.4	
White	156.7		-1.1		-0.4	
White Hispanic <sup>e</sup>	137.4		-1.3*		-	
White Non-Hispanic <sup>e</sup>	161.5		-1.1		-	
Black	248.5		-2.0		-2.3*	
Asian/Pacific Islander	93.8		-0.2		-	
Amer Ind/Alaska Nat <sup>f</sup>	73.3		-3.1*		-	
Hispanic <sup>e</sup>	138.0		-1.2*		-	
<u>U.S. Mortality<sup>g</sup></u>						
RACE/ETHNICITY	Rate 2001-2005		Trend 1996-2005 <sup>h</sup>			
	Rate per 100,000 persons		AAPC (%)			
			Males			
All Races	26.7		-4.1*			
White	24.6		-4.1*			
White Hispanic <sup>e</sup>	21.0		-3.1*			
White Non-Hispanic <sup>e</sup>	24.6		-4.1*			
Black	59.4		-4.0*			
Asian/Pacific Islander	11.0		-4.4*			
Amer Ind/Alaska Nat						
Total U.S.	17.8		-3.5*			
CHSDA Counties	21.1		-2.7*			
Non-CHSDA Counties	13.4		-4.5*			
Hispanic <sup>e</sup>	20.6		-3.1*			

The AAPC is the Average Annual Percent Change over the time interval. The AAPCs are calculated by the Joinpoint Regression Program Version 3.3, April 2008, National Cancer Institute.

Statistic not shown. Rate based on less than 16 cases for the time interval. Trend based on less than 10 cases for at least one year within the time interval.

Rates are age-adjusted to the 2000 US Std Population (19 age groups - Census P25-1130). Trends are based on rates age-adjusted to the 2000 US Std Population (19 age groups - Census P25-1130).

Incidence data used in calculating the 2001-2005 rates are from the SEER 17 areas (San Francisco, Connecticut, Detroit, Hawaii, Iowa, New Mexico, Seattle, Utah, Atlanta, San Jose-Monterey, Los Angeles, Alaska Native Registry, Rural Georgia, California excluding SF/SJM/LA, Kentucky, Louisiana and New Jersey).

The SEER 13 areas are San Francisco, Connecticut, Detroit, Hawaii, Iowa, New Mexico, Seattle, Utah, Atlanta, San Jose-Monterey, Los Angeles, Alaska Native Registry and Rural Georgia. The 1996-2005 AAPC trends are based on a Joinpoint analysis using diagnosis years 1992-2005.

The SEER 9 areas are San Francisco, Connecticut, Detroit, Hawaii, Iowa, New Mexico, Seattle, Utah, and Atlanta. The 1996-2005 AAPC trends are based on a Joinpoint analysis using diagnosis years 1975-2005.

Hispanic and Non-Hispanic are not mutually exclusive from whites, blacks, Asian/Pacific Islanders, and American Indians/Alaska Natives. Incidence data for Hispanics and Non-Hispanics are based on NHIA and exclude cases from the Alaska Native Registry and Kentucky. The 2001-2005 Hispanic and Non-Hispanic death rates exclude deaths from Minnesota, New Hampshire and North Dakota. The 1996-2005 Hispanic and Non-Hispanic mortality trends exclude deaths from Connecticut, Maine, Maryland, Minnesota, New Hampshire, New York, North Dakota, Oklahoma and Vermont.

Incidence data for American Indian/Alaska Native are based on the CHSDA(Contract Health Service Delivery Area) counties.

US Mortality Files, National Center for Health Statistics, CDC.

The 1996-2005 mortality AAPCs are based on a Joinpoint analysis using years of death 1992-2005.

The APC is significantly different from zero (p<.05).

Table XXIII-9  
PROSTATE CANCER (Invasive)

AGE-ADJUSTED SEER INCIDENCE RATES<sup>a</sup>  
 By Registry, Race/Ethnicity and Age

	<u>All Races</u>			<u>Whites</u>			<u>Blacks</u>		
	<u>All Ages</u>	<u>Ages &lt;65</u>	<u>Ages 65+</u>	<u>All Ages</u>	<u>Ages &lt;65</u>	<u>Ages 65+</u>	<u>All Ages</u>	<u>Ages &lt;65</u>	<u>Ages 65+</u>
<u>SEER INCIDENCE RATES<sup>a</sup>, 2001-2005</u>									
<u>REGISTRY</u>									
Atlanta & Rural Georgia	175.7	68.6	915.9	151.7	56.7	808.4	260.9	104.6	1341.2
Atlanta	175.4	68.7	912.9	151.7	56.9	806.7	262.3	105.0	1349.6
Rural Georgia	178.2	65.0	960.6	151.9	51.8	843.5	238.9	94.0	1240.5
California	152.5	53.1	839.8	148.6	52.6	812.5	223.1	100.0	1073.9
Greater Bay Area	156.8	56.3	851.6	163.5	58.9	886.0	203.9	96.6	945.8
San Francisco-Oakland	155.8	57.2	837.4	159.3	58.5	856.3	204.3	98.3	937.0
San Jose-Monterey	159.1	54.5	882.2	171.3	59.7	942.2	210.3	85.8	1070.8
Los Angeles	155.2	52.7	863.7	144.4	50.0	796.8	231.0	103.4	1113.3
Greater California	149.7	52.0	825.0	145.9	51.6	797.7	226.3	98.7	1108.2
Connecticut	166.6	64.0	875.7	162.1	60.9	862.0	234.3	108.7	1102.2
Detroit	206.1	77.3	1096.6	182.7	65.1	995.5	291.7	121.7	1467.2
Hawaii	129.3	37.7	762.6	147.4	51.0	813.6	181.6	100.8	740.1
Iowa	147.3	49.9	820.5	143.4	48.2	801.1	199.0	95.1	917.0
Kentucky	144.4	49.4	800.8	137.2	45.0	774.6	238.1	97.0	1213.0
Louisiana	180.3	61.1	1004.3	161.0	53.1	907.0	243.5	85.5	1335.2
New Jersey	183.6	66.9	990.2	171.5	62.2	926.6	269.5	108.5	1382.3
New Mexico	149.3	52.8	816.2	154.5	54.9	843.2	144.7	76.8	613.5
Seattle-Puget Sound	171.3	59.3	945.3	174.8	60.9	962.4	250.3	99.6	1291.4
Utah	185.0	63.8	1022.6	187.4	64.9	1033.8	183.7	103.5	738.4
9 SEER Areas <sup>b</sup>	168.2	61.0	908.8	164.5	58.8	895.6	255.9	109.0	1270.8
11 SEER Areas <sup>b</sup>	164.8	58.8	897.3	160.8	57.0	878.0	248.2	107.2	1222.7
13 SEER Areas <sup>b</sup>	164.7	58.8	896.6	160.7	57.0	877.9	248.1	107.0	1223.0
17 SEER Areas <sup>b</sup>	163.0	57.7	890.8	156.7	55.3	857.7	248.5	102.7	1256.4

<sup>a</sup> Rates are per 100,000 and are age-adjusted to the 2000 US Std Population (19 age groups - Census P25-1130)

<sup>b</sup> The SEER 9 areas are San Francisco, Connecticut, Detroit, Hawaii, Iowa, New Mexico, Seattle, Utah and Atlanta.

The SEER 11 areas comprise the SEER 9 areas plus San Jose-Monterey and Los Angeles.

The SEER 13 areas comprise the SEER 11 areas plus the Alaska Native Registry and Rural Georgia.

The SEER 17 areas comprise the SEER 13 areas plus California excluding SF/SJM/LA, Kentucky, Louisiana and New Jersey.

- Statistic not shown. Rate based on less than 16 cases for the time interval.

Table XXIII-10  
PROSTATE CANCER (Invasive)

AGE-ADJUSTED SEER DEATH RATES<sup>a</sup>  
 By Registry, Race/Ethnicity and Age

	<u>All Races</u>			<u>Whites</u>			<u>Blacks</u>		
	<u>All Ages</u>	<u>Ages &lt;65</u>	<u>Ages 65+</u>	<u>All Ages</u>	<u>Ages &lt;65</u>	<u>Ages 65+</u>	<u>All Ages</u>	<u>Ages &lt;65</u>	<u>Ages 65+</u>
<u>SEER DEATH RATES<sup>a</sup>, 2001-2005</u>									
REGISTRY									
Atlanta & Rural Georgia	29.2	1.9	218.1	21.3	1.0	161.6	58.9	4.5	435.0
Atlanta	28.5	1.9	212.9	21.3	1.0	161.6	56.9	4.3	420.2
Rural Georgia	38.5	-	286.3	21.3	-	165.5	77.3	-	562.3
California	25.0	1.8	185.1	25.0	1.7	186.3	57.7	5.9	416.3
Greater Bay Area	23.7	1.5	176.9	24.6	1.5	183.9	57.2	4.9	419.0
San Francisco-Oakland	24.4	1.6	181.7	24.6	1.6	184.1	58.4	5.1	426.8
San Jose-Monterey	22.2	1.2	167.3	24.5	1.4	184.0	47.7	-	352.1
Los Angeles	24.4	2.0	179.4	23.4	1.7	173.0	57.4	6.3	410.9
Greater California	25.6	1.8	190.5	25.8	1.7	192.0	58.8	6.0	423.9
Connecticut	27.0	1.8	201.5	26.1	1.5	196.4	48.8	5.4	349.0
Detroit	27.8	2.1	205.3	23.0	1.6	171.1	50.5	4.5	368.6
Hawaii	18.8	1.0	141.9	29.2	-	221.8	-	-	-
Iowa	27.5	1.8	205.2	27.3	1.7	204.0	57.9	-	422.8
Kentucky	26.9	1.9	199.5	25.2	1.7	187.4	61.4	5.6	447.1
Louisiana	32.2	2.4	238.4	24.5	1.5	183.9	60.0	5.3	438.0
New Jersey	26.2	1.8	195.2	24.0	1.5	179.4	57.7	4.8	423.2
New Mexico	26.9	1.7	201.4	26.8	1.7	200.2	61.5	-	477.5
Seattle-Puget Sound	26.6	1.6	199.0	26.9	1.5	202.0	49.1	5.2	352.4
Utah	26.5	1.6	198.3	26.6	1.6	199.6	-	-	-
9 SEER Areas <sup>b</sup>	26.3	1.7	196.0	25.7	1.5	192.3	53.1	4.6	388.0
11 SEER Areas <sup>b</sup>	25.7	1.8	190.9	25.1	1.6	188.0	54.1	5.0	393.6
13 SEER Areas <sup>b</sup>	25.7	1.8	191.1	25.1	1.6	188.0	54.4	5.0	395.7
17 SEER Areas <sup>b</sup>	26.2	1.8	194.6	25.1	1.6	187.6	56.7	5.2	413.2
Total U.S.	26.7	1.9	198.6	24.6	1.6	183.6	59.4	5.2	433.6

<sup>a</sup> US Mortality Files, National Center for Health Statistics, Centers for Disease Control and Prevention. Rates are per 100,000 and are age-adjusted to the 2000 US Std Population (19 age groups - Census P25-1130).

<sup>b</sup> The SEER 9 areas are San Francisco, Connecticut, Detroit, Hawaii, Iowa, New Mexico, Seattle, Utah and Atlanta. The SEER 11 areas comprise the SEER 9 areas plus San Jose-Monterey and Los Angeles.

The SEER 13 areas comprise the SEER 11 areas plus the Alaska Native Registry and Rural Georgia.

The SEER 17 areas comprise the SEER 13 areas plus California excluding SF/SJM/LA, Kentucky, Louisiana and New Jersey.

- Statistic not shown. Rate based on less than 16 cases for the time interval.

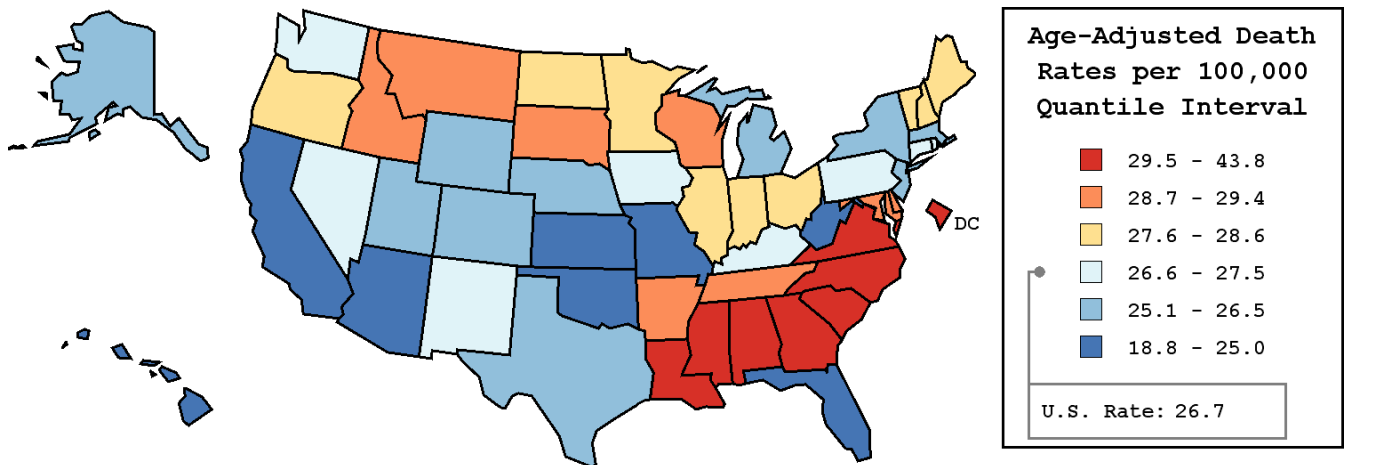
Table XXIII-11  
PROSTATE CANCER (Invasive)

AVERAGE ANNUAL AGE-ADJUSTED CANCER DEATH<sup>a</sup> RATES BY STATE, ALL RACES, 2001-2005

Males

State	Rate	SE	Rank	PD
TOTAL U.S.	26.7	0.07		
High Five States				
D.C.	43.8 <sup>b</sup>	2.09	(01)	64.0 <sup>c</sup>
Mississippi	36.2 <sup>b</sup>	0.86	(02)	35.6 <sup>c</sup>
Alabama	33.0 <sup>b</sup>	0.64	(03)	23.6 <sup>c</sup>
South Carolina	32.4 <sup>b</sup>	0.69	(04)	21.3 <sup>c</sup>
Louisiana	32.2 <sup>b</sup>	0.66	(05)	20.6 <sup>c</sup>
Low Five States				
Oklahoma	24.9	0.60	(47)	-6.7
Missouri	24.3 <sup>b</sup>	0.46	(48)	-9.0
Arizona	23.2 <sup>b</sup>	0.45	(49)	-13.1 <sup>c</sup>
Florida	22.3 <sup>b</sup>	0.21	(50)	-16.5 <sup>c</sup>
Hawaii	18.8 <sup>b</sup>	0.80	(51)	-29.6 <sup>c</sup>

State	Rate	SE	Rank	PD	State	Rate	SE	Rank	PD
Alabama	33.0 <sup>b</sup>	0.64	(03)	23.6 <sup>c</sup>	Montana	29.2	1.20	(12)	9.4
Alaska	26.1	2.27	(39)	-2.2	Nebraska	25.1	0.82	(43)	-6.0
Arizona	23.2 <sup>b</sup>	0.45	(49)	-13.1 <sup>c</sup>	Nevada	26.6	0.86	(33)	-0.4
Arkansas	28.9	0.71	(14)	8.2	New Hampshire	28.3	1.11	(19)	6.0
California	25.0 <sup>b</sup>	0.21	(46)	-6.4	New Jersey	26.2	0.40	(38)	-1.9
Colorado	26.5	0.64	(36)	-0.7	New Mexico	26.9	0.88	(30)	0.7
Connecticut	27.0	0.60	(27)	1.1	New York	26.0	0.26	(40)	-2.6
Delaware	29.4	1.37	(09)	10.1 <sup>c</sup>	North Carolina	29.9 <sup>b</sup>	0.47	(08)	12.0 <sup>c</sup>
D.C.	43.8 <sup>b</sup>	2.09	(01)	64.0 <sup>c</sup>	North Dakota	28.1	1.33	(22)	5.2
Florida	22.3 <sup>b</sup>	0.21	(50)	-16.5 <sup>c</sup>	Ohio	27.9	0.36	(23)	4.5
Georgia	30.6 <sup>b</sup>	0.52	(06)	14.6 <sup>c</sup>	Oklahoma	24.9	0.60	(47)	-6.7
Hawaii	18.8 <sup>b</sup>	0.80	(51)	-29.6 <sup>c</sup>	Oregon	27.7	0.61	(25)	3.7
Idaho	29.0	1.07	(13)	8.6	Pennsylvania	26.9	0.31	(29)	0.7
Illinois	28.1 <sup>b</sup>	0.35	(20)	5.2	Rhode Island	27.0	1.08	(28)	1.1
Indiana	27.8	0.50	(24)	4.1	South Carolina	32.4 <sup>b</sup>	0.69	(04)	21.3 <sup>c</sup>
Iowa	27.5	0.63	(26)	3.0	South Dakota	28.8	1.26	(16)	7.9
Kansas	25.0	0.66	(44)	-6.4	Tennessee	29.3 <sup>b</sup>	0.54	(11)	9.7
Kentucky	26.9	0.62	(31)	0.7	Texas	25.5 <sup>b</sup>	0.28	(42)	-4.5
Louisiana	32.2 <sup>b</sup>	0.66	(05)	20.6 <sup>c</sup>	Utah	26.5	0.90	(34)	-0.7
Maine	28.1	1.00	(21)	5.2	Vermont	28.3	1.54	(18)	6.0
Maryland	29.3 <sup>b</sup>	0.57	(10)	9.7	Virginia	30.1 <sup>b</sup>	0.51	(07)	12.7 <sup>c</sup>
Massachusetts	26.4	0.45	(37)	-1.1	Washington	26.8	0.49	(32)	0.4
Michigan	26.5	0.38	(35)	-0.7	West Virginia	25.0	0.79	(45)	-6.4
Minnesota	28.6	0.54	(17)	7.1	Wisconsin	28.8 <sup>b</sup>	0.51	(15)	7.9
Mississippi	36.2 <sup>b</sup>	0.86	(02)	35.6 <sup>c</sup>	Wyoming	25.8	1.66	(41)	-3.4
Missouri	24.3 <sup>b</sup>	0.46	(48)	-9.0					



<sup>a</sup> US Mortality Files, National Center for Health Statistics, Centers for Disease Control and Prevention. Rates are per 100,000 and are age-adjusted to the 2000 US Std Population (19 age groups - Census P25-1130).  
<sup>b</sup> Difference between state rate and total U.S. rate is statistically significant ( $p \leq .0002$ ).  
<sup>c</sup> Absolute percent difference between state rate and total U.S. rate is 10% or more.  
SE Standard error of the rate.  
PD Percent difference between state rate and total U.S. rate.

Table XXIII-12  
PROSTATE CANCER (Invasive)

Estimated United States Cancer Prevalence Counts<sup>a</sup> on January 1, 2005  
By Race/Ethnicity and Years Since Diagnosis

Years Since Diagnosis	0 to <5	5 to <10	10 to <15	15 to <20	20 to <25	25 to <30	0 to <15 <sup>e</sup>	0 to <30 <sup>e</sup>	>=30 <sup>g</sup>	Complete <sup>h</sup>
<u>Race</u>										
All Races <sup>b</sup>	939,384	648,082	398,529	87,363	22,685	6,915	1,985,995	2,102,958	3,541	2,106,499
White <sup>b</sup>	783,783	548,161	351,255	79,693	20,616	6,271	1,683,200	1,789,780	3,856	1,793,636
Black <sup>b</sup>	120,582	79,242	38,475	6,415	1,814	560	238,299	247,089	311	247,400
Asian/Pacific Islander <sup>c</sup>	16,643	9,136	4,383	+	+	+	30,162	+	+	+
Hispanic <sup>d</sup>	47,271	27,667	13,419	+	+	+	88,358	+	+	+

Estimated prevalence percent<sup>a</sup> on January 1, 2005, of the SEER 11 population diagnosed in the previous 15 years  
By Age at Prevalence and Race/Ethnicity

Age at Prevalence	Age Specific (Crude)										Age-Adjusted <sup>f</sup>
	All Ages	0-9	10-19	20-29	30-39	40-49	50-59	60-69	70-79	80+	All Ages
<u>Race</u>											
All Races <sup>c</sup>	1.1821%	-	0.0002%	0.0002%	0.0012%	0.0652%	0.9189%	4.5830%	10.7558%	12.6607%	1.5073%
White <sup>c</sup>	1.2449%	-	0.0002%	-	0.0010%	0.0582%	0.8855%	4.5615%	10.8543%	12.5270%	1.5017%
Black <sup>c</sup>	1.2525%	-	-	-	0.0030%	0.1606%	1.8297%	7.7507%	15.7410%	15.9066%	2.2660%
Asian/Pacific Islander <sup>c</sup>	0.5771%	-	-	-	-	0.0181%	0.2794%	1.8531%	5.5462%	8.4108%	0.7795%
Hispanic <sup>d</sup>	0.3934%	-	-	-	0.0009%	0.0326%	0.5447%	3.1912%	8.3546%	10.1096%	1.1377%

<sup>a</sup> US 2005 cancer prevalence counts are based on 2005 cancer prevalence proportions from the SEER registries and 1/1/2005 US population estimates based on the average of 2004 and 2005 population estimates from the US Bureau of the Census. Prevalence was calculated using the First Malignant Primary Only for a person.

<sup>b c d</sup> Statistics based on (b) SEER 9 Areas (c) SEER 11 Areas and Rural Georgia (d) NHIA for Hispanic for SEER 11 Areas and Rural Georgia.

<sup>e</sup> Maximum limited-duration prevalence: 30 years for 1975-2005 SEER 9 data; 15 years for 1990-2005 SEER 11 data (used to calculate prevalence for Hispanics and Asian Pacific Islanders).

<sup>f</sup> Percentages are age-adjusted to the 2000 US Standard Population (19 age groups - Census P25-1130) by 5-year age groups.

<sup>g h</sup> (g) Cases diagnosed more than 30 years ago were estimated using the completeness index method (Capocaccia et. al. 1997, Merrill et. al. 2000). (h) Complete prevalence is obtained by summing 0 to <30 and >=30.

- Statistic not shown. Statistic based on fewer than 5 cases estimated alive in SEER for the time interval.

+ Not available.

# SEER Incidence, Delay Adjusted Incidence and US Death Rates<sup>a</sup> Prostate Cancer, by Race

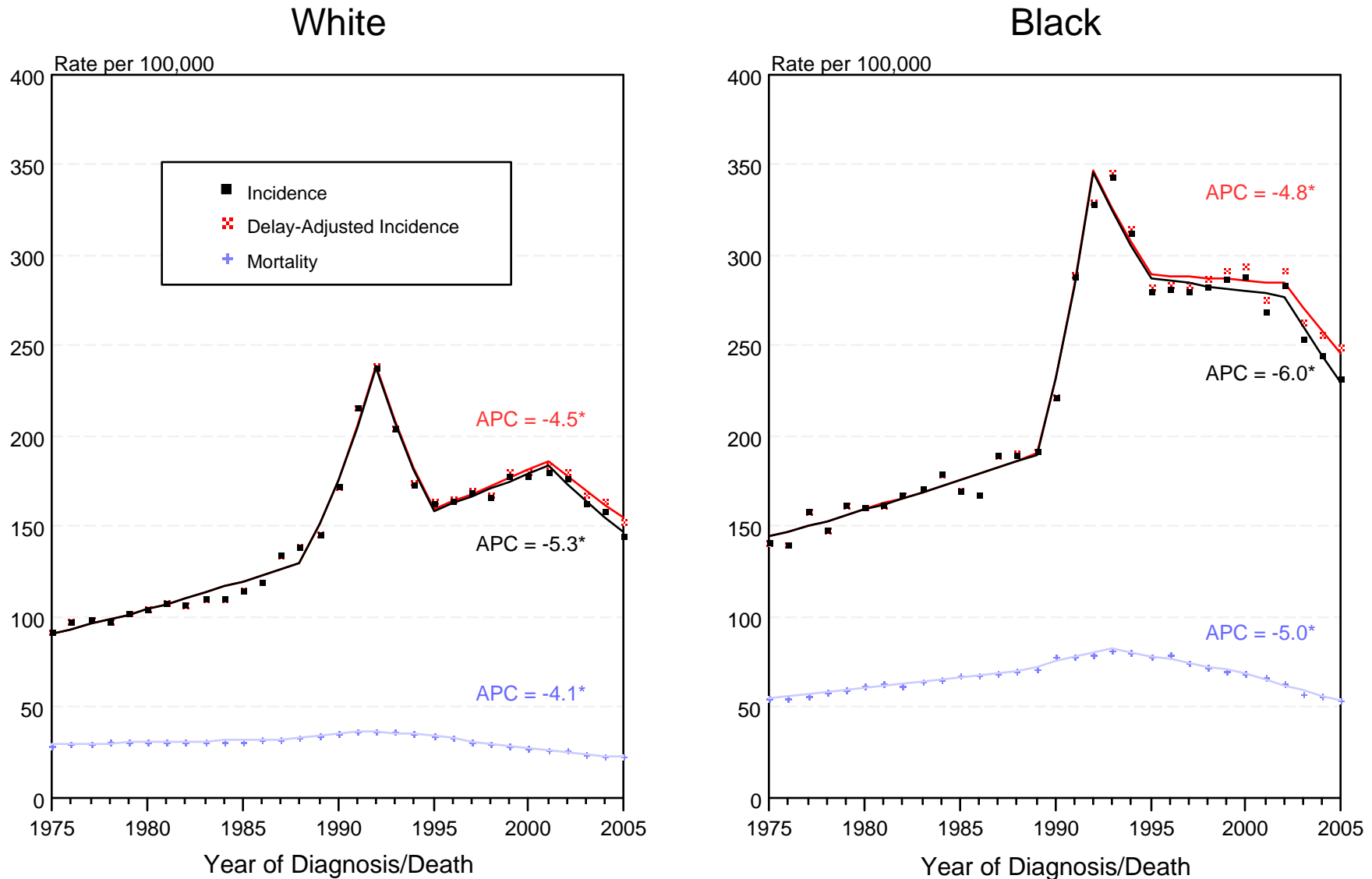


Figure XXIII-1

<sup>a</sup> Source: SEER 9 areas and US Mortality Files (National Center for Health Statistics, CDC). Rates are age-adjusted to the 2000 US Std Population (19 age groups - Census P25-1103). Regression lines and APCs are calculated using the Joinpoint Regression Program Version 3.3.1, April 2008, National Cancer Institute. The APC is the Annual Percent Change for the regression line segments. The APC shown on the graph is for the most recent trend.  
 \* The APC is significantly different from zero ( $p < 0.05$ ).

# SEER Incidence, Delay Adjusted Incidence and US Death Rates<sup>a</sup> Prostate Cancer, by Age and Race

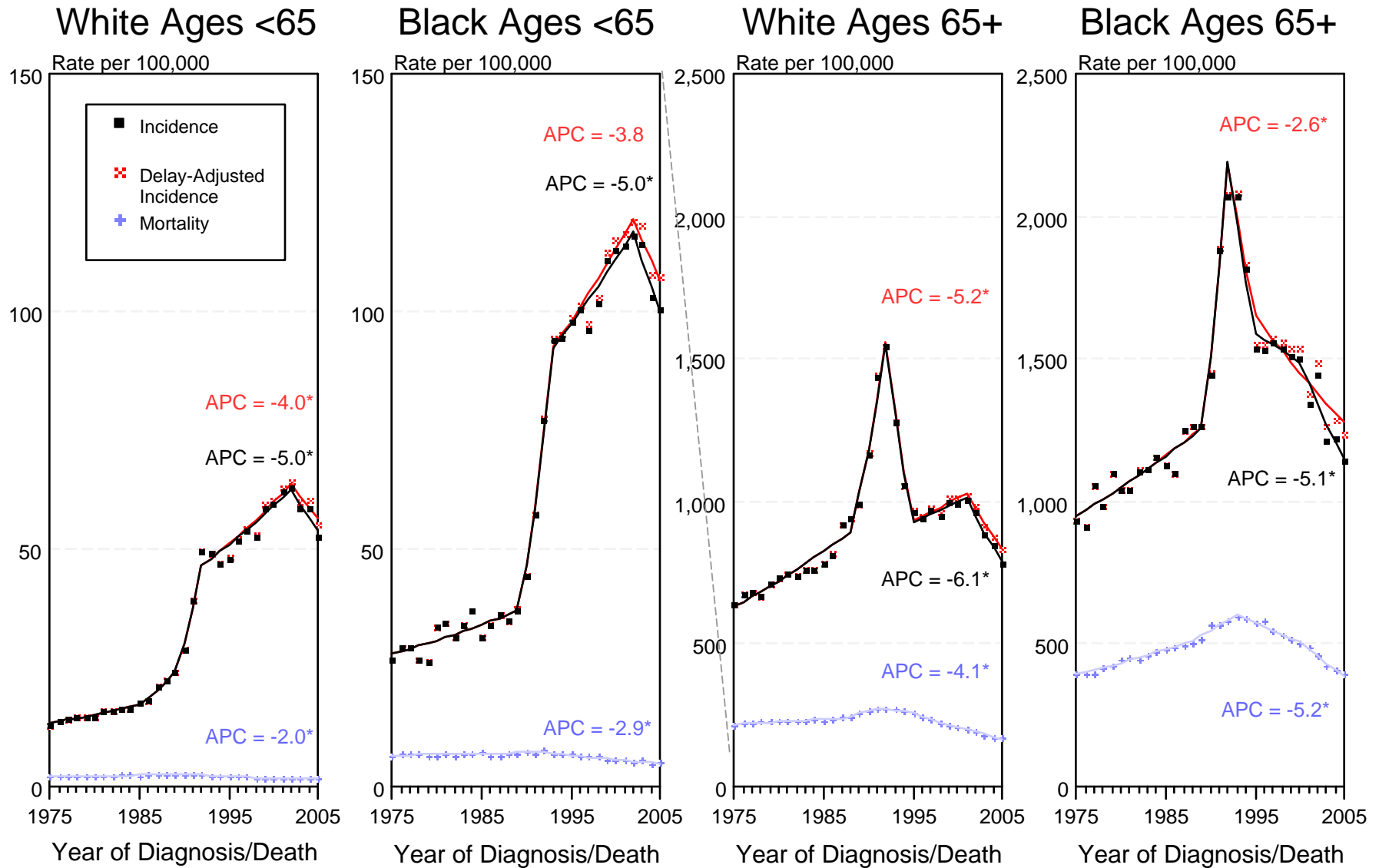


Figure XXIII-2

<sup>a</sup> Source: SEER 9 areas and US Mortality Files (National Center for Health Statistics, CDC). Rates are age-adjusted to the 2000 US Std Population (19 age groups - Census P25-1103). Regression lines and APCs are calculated using the Joinpoint Regression Program Version 3.3.1, April 2008, National Cancer Institute. The APC is the Annual Percent Change for the regression line segments. The APC shown on the graph is for the most recent trend.  
\* The APC is significantly different from zero ( $p < 0.05$ ).



# SEER Incidence and US Death Rates<sup>a</sup> Prostate Cancer

Joinpoint Analyses for Whites and Blacks from 1975-2005  
and for Asian/Pacific Islanders, American Indians/Alaska Natives and Hispanics from 1992-2005

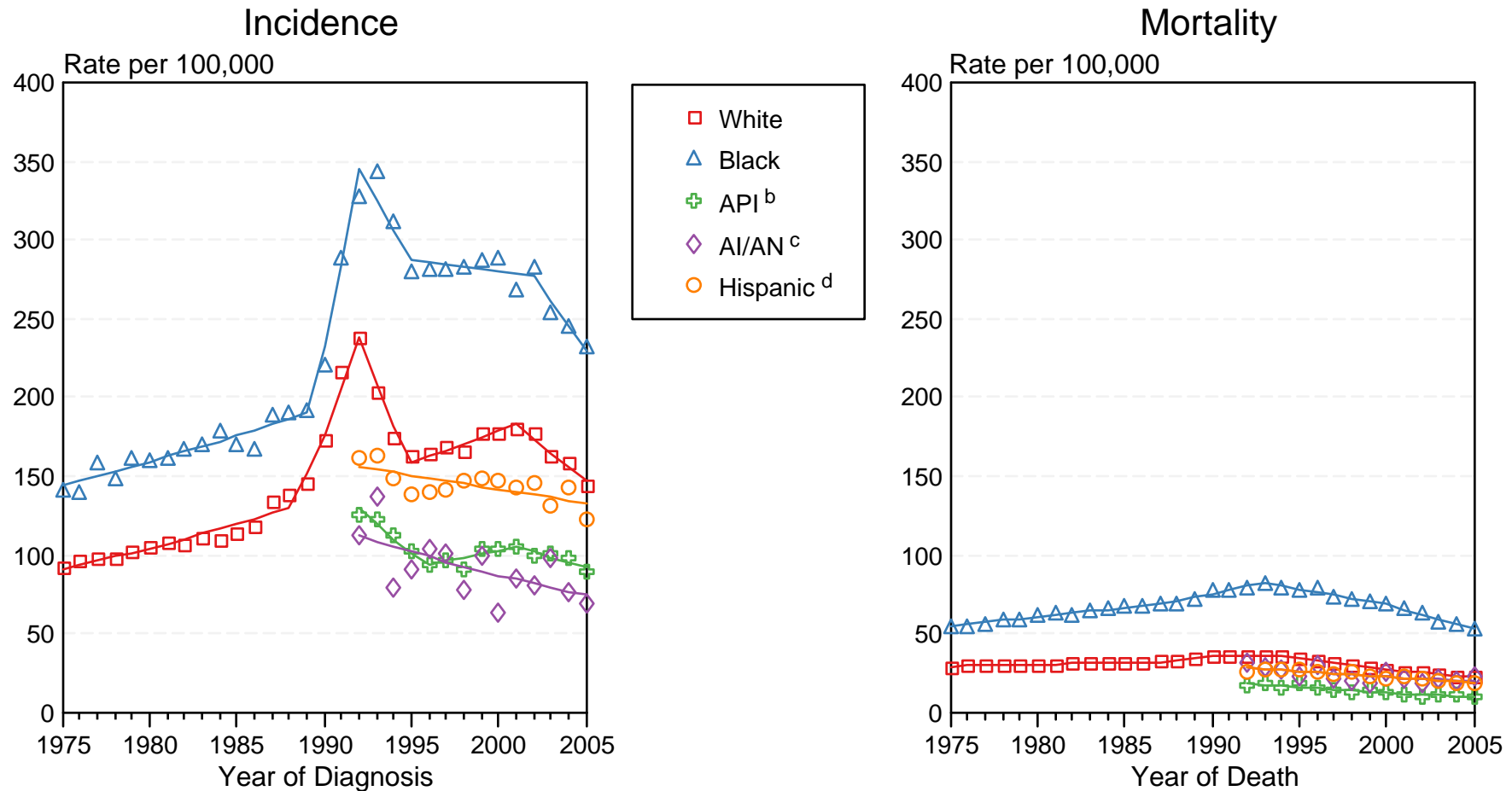


Figure XXIII-3

Source: Incidence data for whites and blacks are from the SEER 9 areas (San Francisco, Connecticut, Detroit, Hawaii, Iowa, New Mexico, Seattle, Utah, Atlanta). Incidence data for Asian/Pacific Islanders, American Indians/Alaska Natives and Hispanics are from the SEER 13 Areas (SEER 9 Areas, San Jose-Monterey, Los Angeles, Alaska Native Registry and Rural Georgia). Mortality data are from US Mortality Files, National Center for Health Statistics, CDC.

<sup>a</sup> Rates are age-adjusted to the 2000 US Std Population (19 age groups - Census P25-1103).

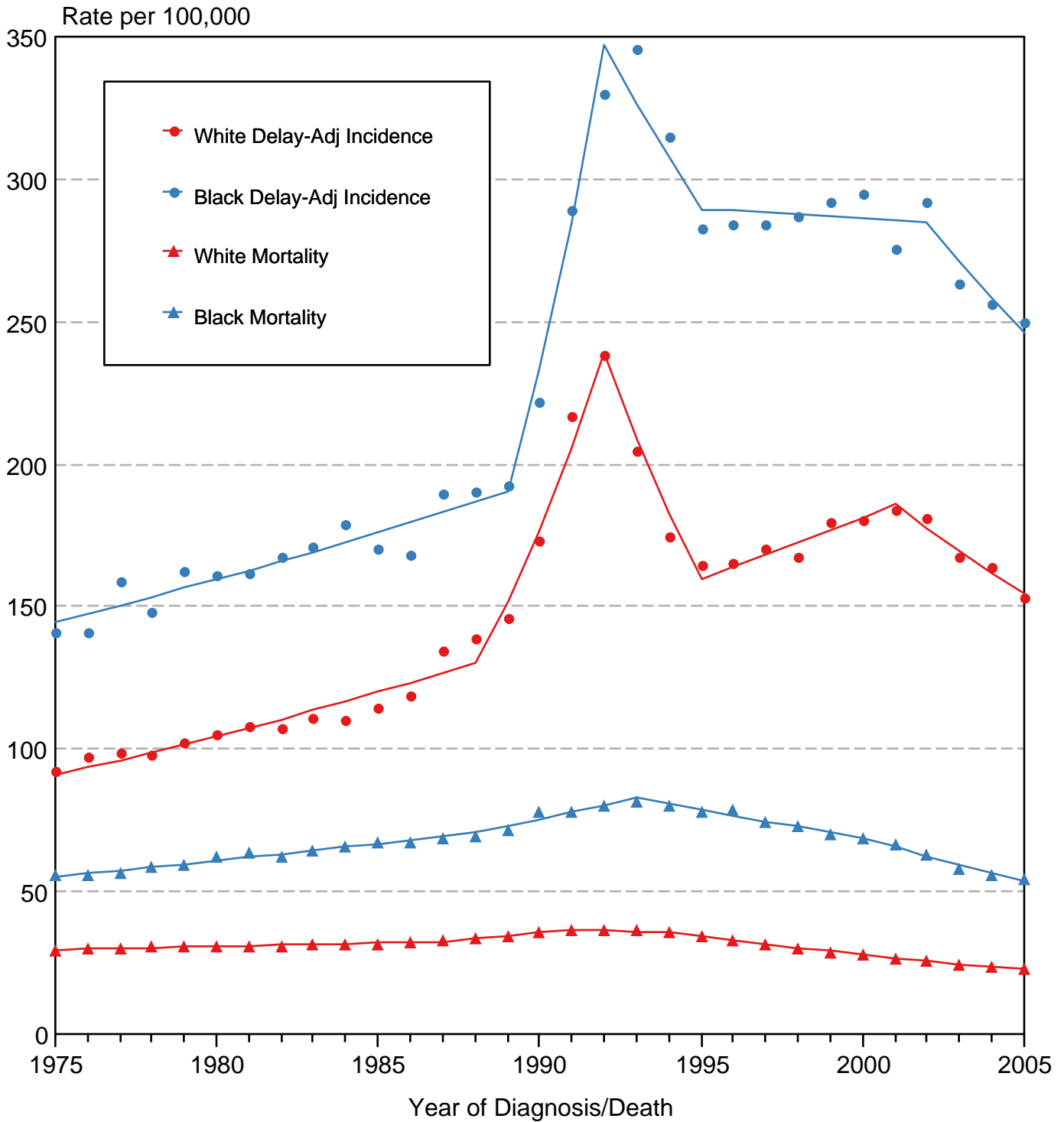
Regression lines are calculated using the Joinpoint Regression Program Version 3.3.1, April 2008, National Cancer Institute. Joinpoint analyses for Whites and Blacks during the 1975-2005 period allow a maximum of 4 joinpoints. Analyses for other ethnic groups during the period 1992-2005 allow a maximum of 3 joinpoints.

<sup>b</sup> API = Asian/Pacific Islander.

<sup>c</sup> AI/AN = American Indian/Alaska Native. Rates for American Indian/Alaska Native are based on the CHSDA(Contract Health Service Delivery Area) counties.

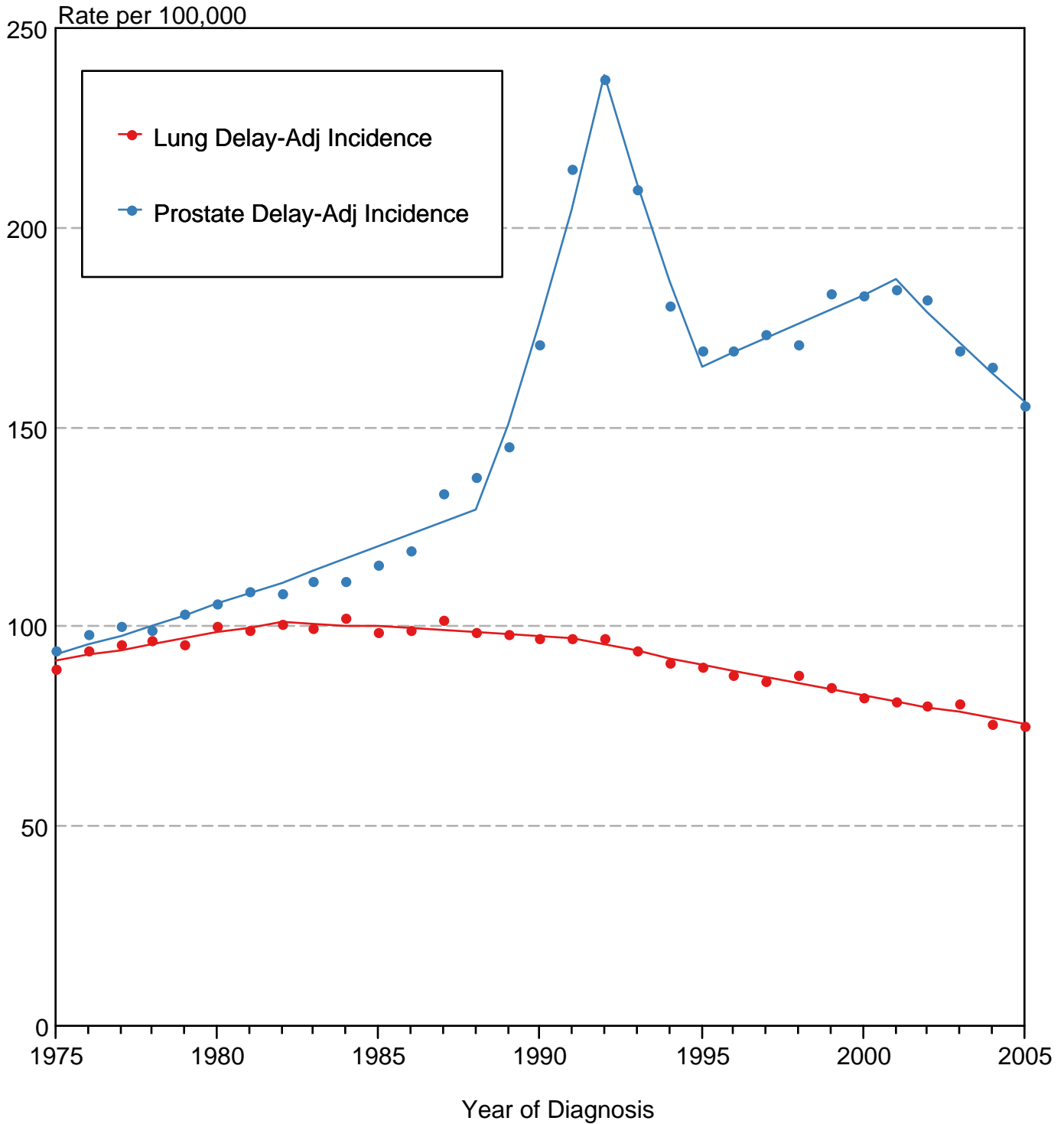
<sup>d</sup> Hispanic is not mutually exclusive from whites, blacks, Asian/Pacific Islanders, and American Indians/Alaska Natives. Incidence data for Hispanics are based on NHIA and exclude cases from the Alaska Native Registry. Mortality data for Hispanics exclude cases from Connecticut, Maine, Maryland, Minnesota, New Hampshire, New York, North Dakota, Oklahoma, and Vermont.

# Prostate Cancer Delay-Adjusted SEER Incidence & US Mortality 1975-2005



Source: SEER 9 areas and US Mortality Files (National Center for Health Statistics, CDC). Rates are age-adjusted to the 2000 US Std Population (19 age groups - Census P25-1103). Regression lines are calculated using the Joinpoint Regression Program Version 3.3.1, April 2008, National Cancer Institute.

# Prostate vs Lung Cancer Delay-Adjusted Incidence All Races, Males 1975-2005



Source: SEER 9 areas. Rates are age-adjusted to the 2000 US Std Population (19 age groups - Census P25-1103). Regression lines are calculated using the Joinpoint Regression Program Version 3.3.1, April 2008, National Cancer Institute.