

Office of Marine Safety



National Transportation Safety Board

National Transportation Safety Board Meeting

Sinking of the Small Passenger Vessel *Panther*

Everglades National Park

December 30, 2002



National Transportation Safety Board

Launch Team

Two investigators

- **IIC/OPS**
- **Survival Factors**



Party Members



Experience Your America
NATIONAL PARK SERVICE



*Everglades
National Park
Boat Tours*



National Transportation Safety Board

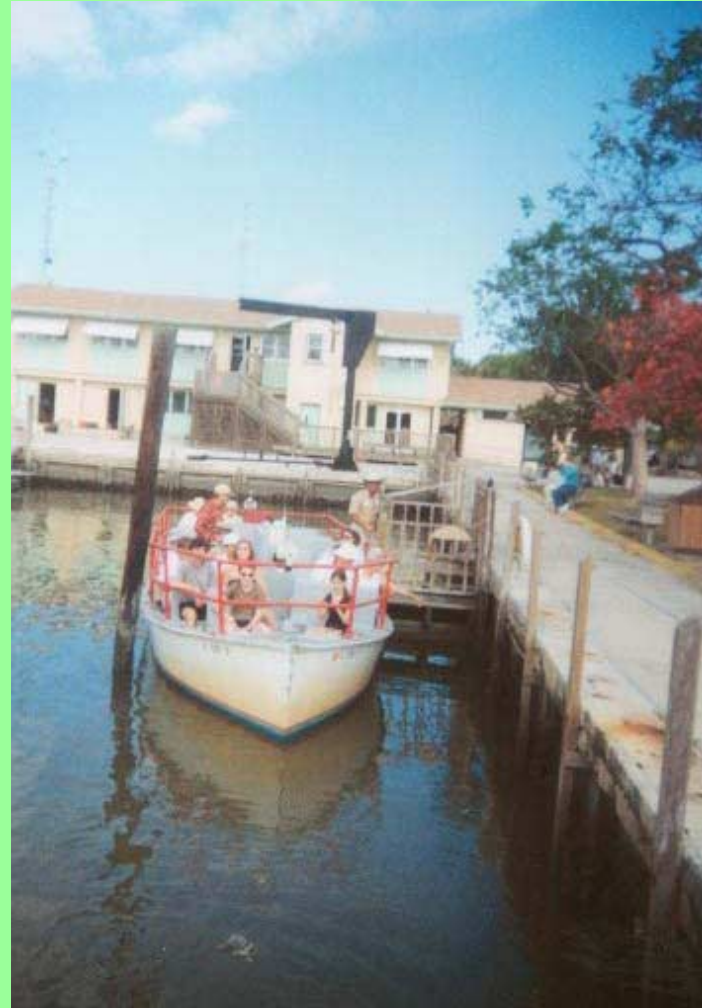
Office of Marine Safety

- Explosion of tank barge *Bouchard 125*
- Boiler Explosion on the cruise ship *Norway*
- Capsizing of the charter fishing vessel *Taki-Tooo*
- Allision of the Staten Island ferry *Andrew J. Barberi*
- Capsizing of the water taxi *Lady D*

- Grounding of small passenger vessel *Safari Spirit*
- Fire on passenger vessel *Columbia*



U.S. Small
Passenger
Vessel
Panther



National Transportation Safety Board

Panther



National Transportation Safety Board

Everglades National Park



National Transportation Safety Board

Everglades National Park Boat Tours

Skimmer



Panther II



Manatee



Manatee II





National Transportation Safety Board



National Transportation Safety Board



Gulf of Mexico



National Transportation Safety Board

“Red Rock”



National Transportation Safety Board

“Red Rock”



National Transportation Safety Board



National Transportation Safety Board

Hoosier Daddy



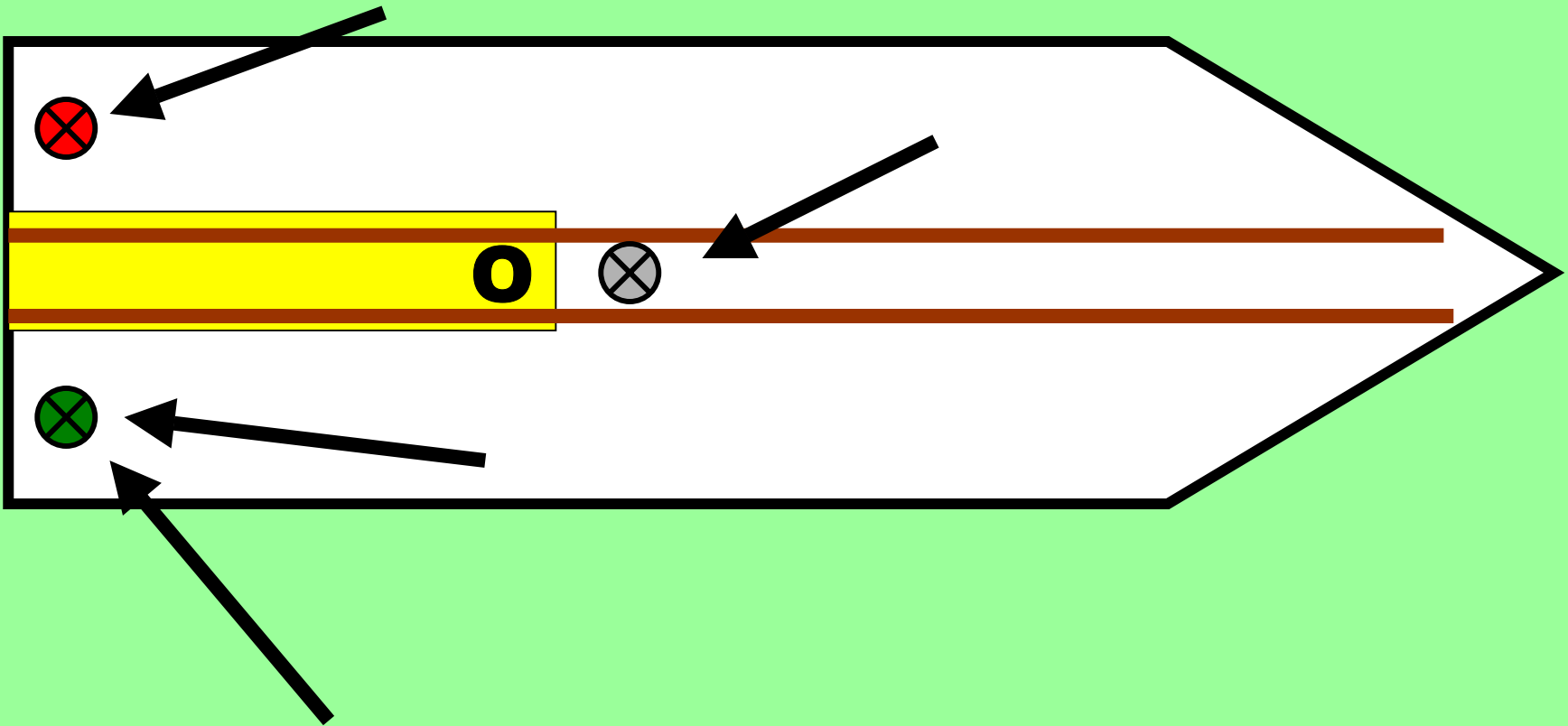
National Park Service Boat



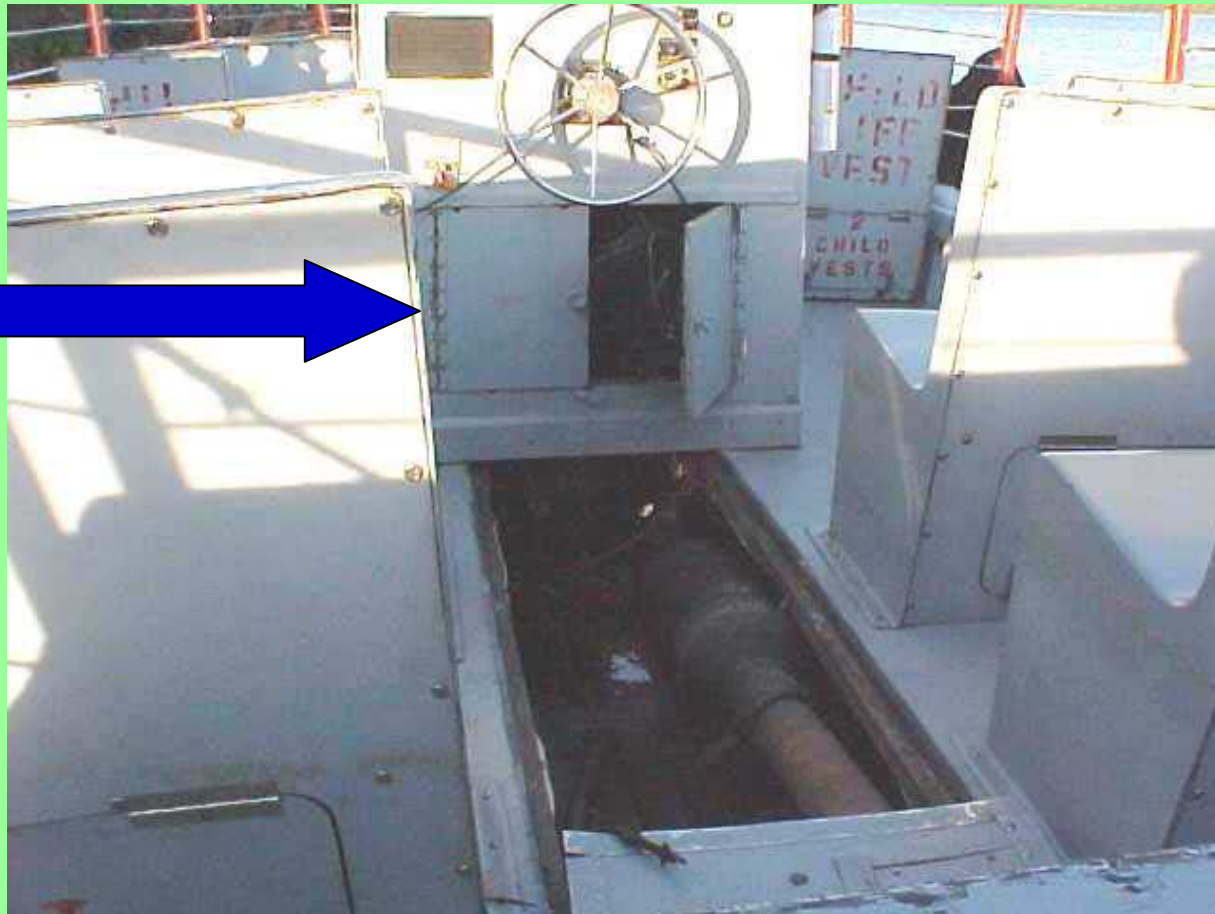
National Transportation Safety Board



National Transportation Safety Board



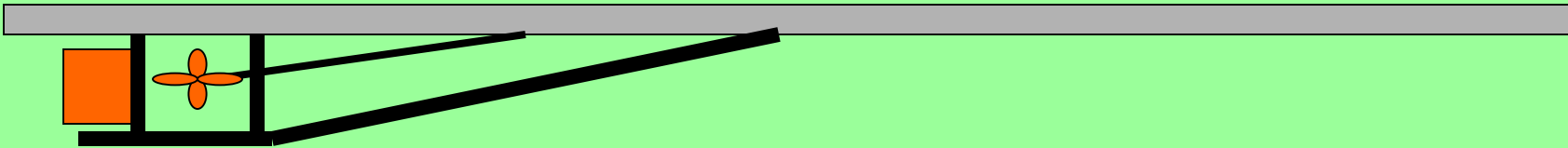
National Transportation Safety Board

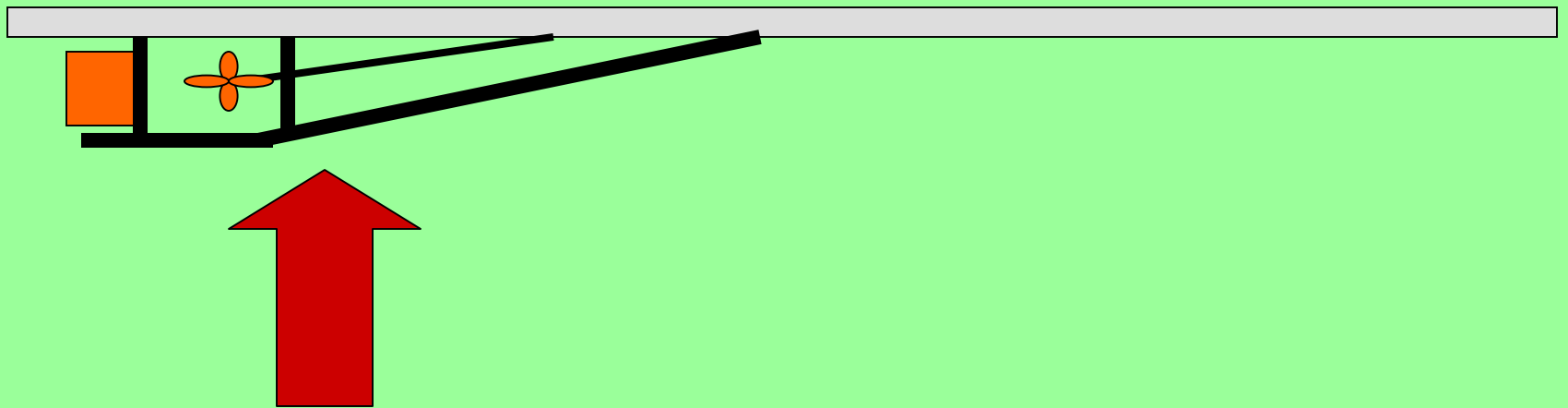
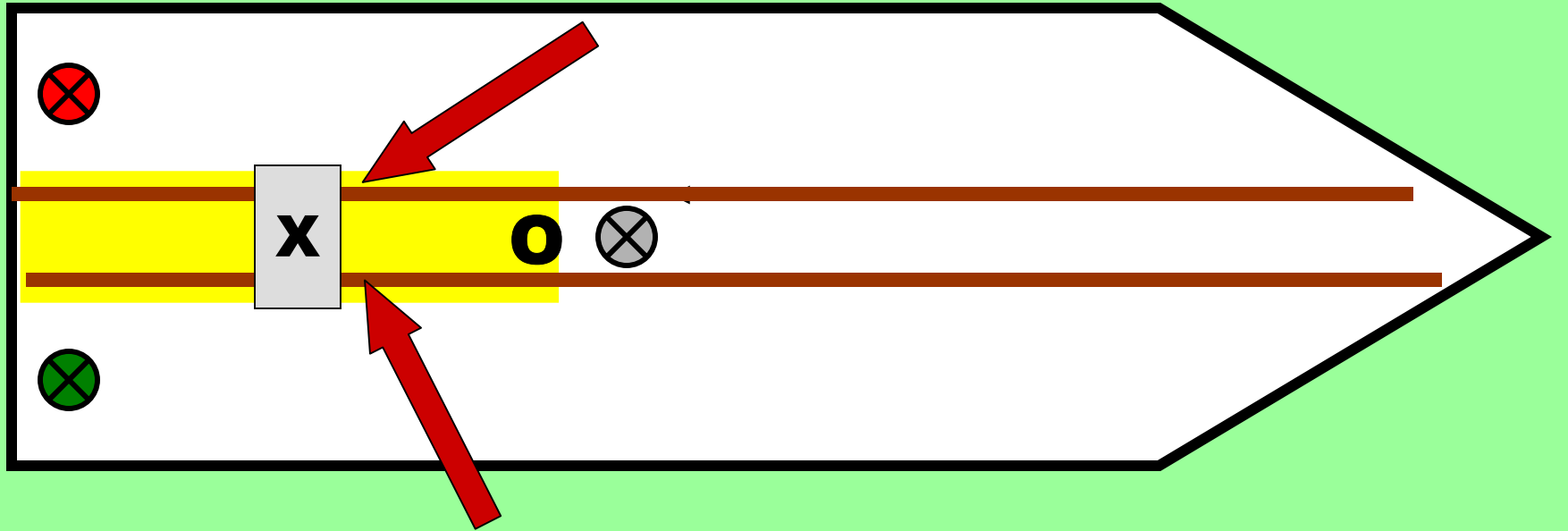


National Transportation Safety Board

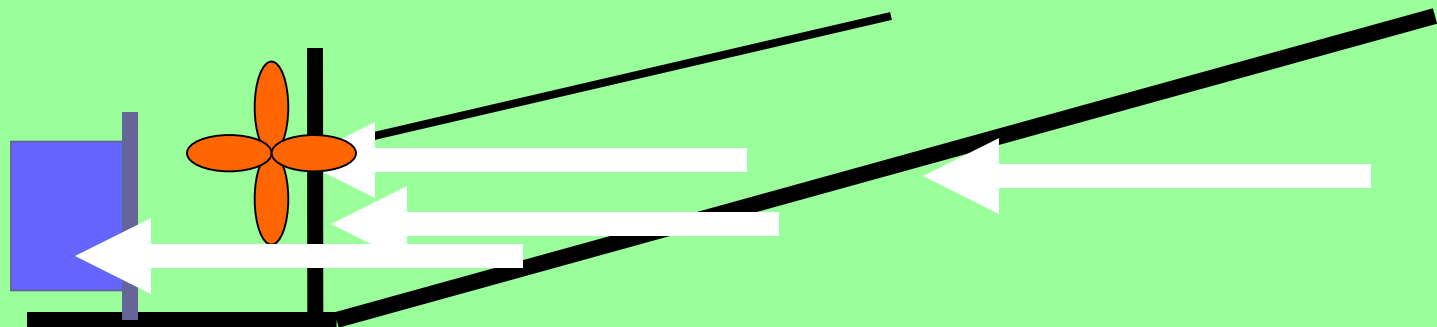
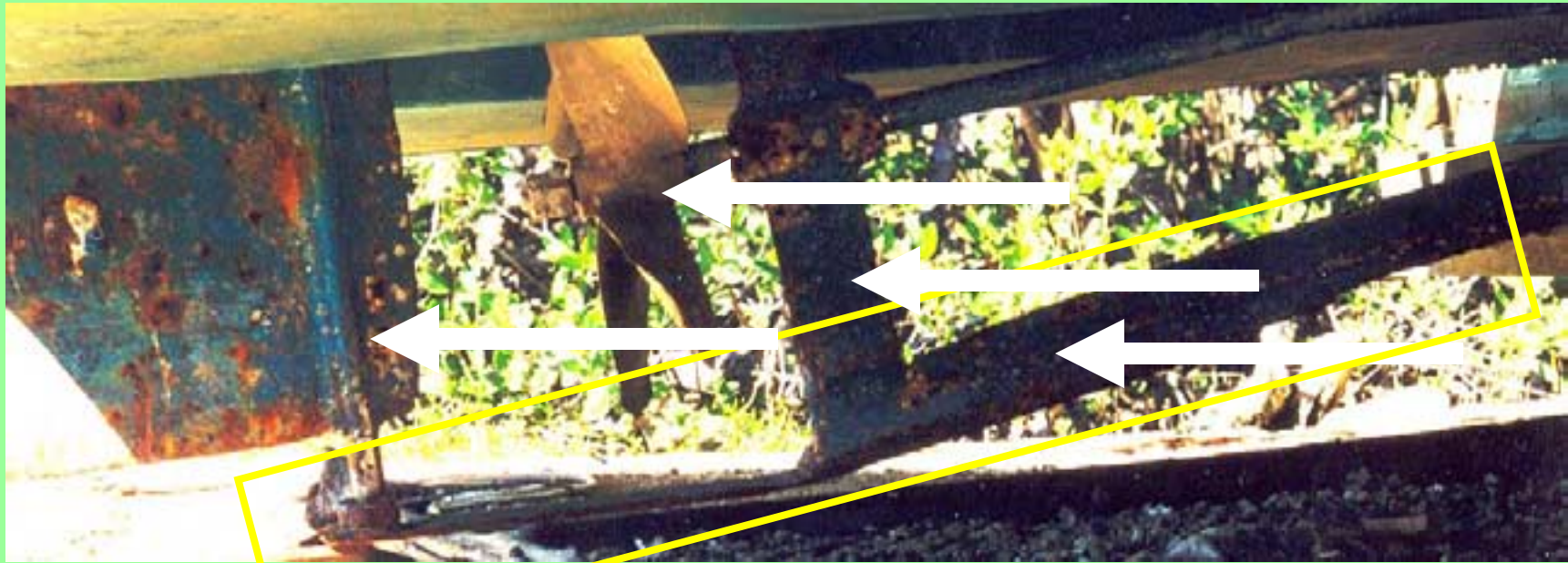
Stern

Bow





National Transportation Safety Board



National Transportation Safety Board

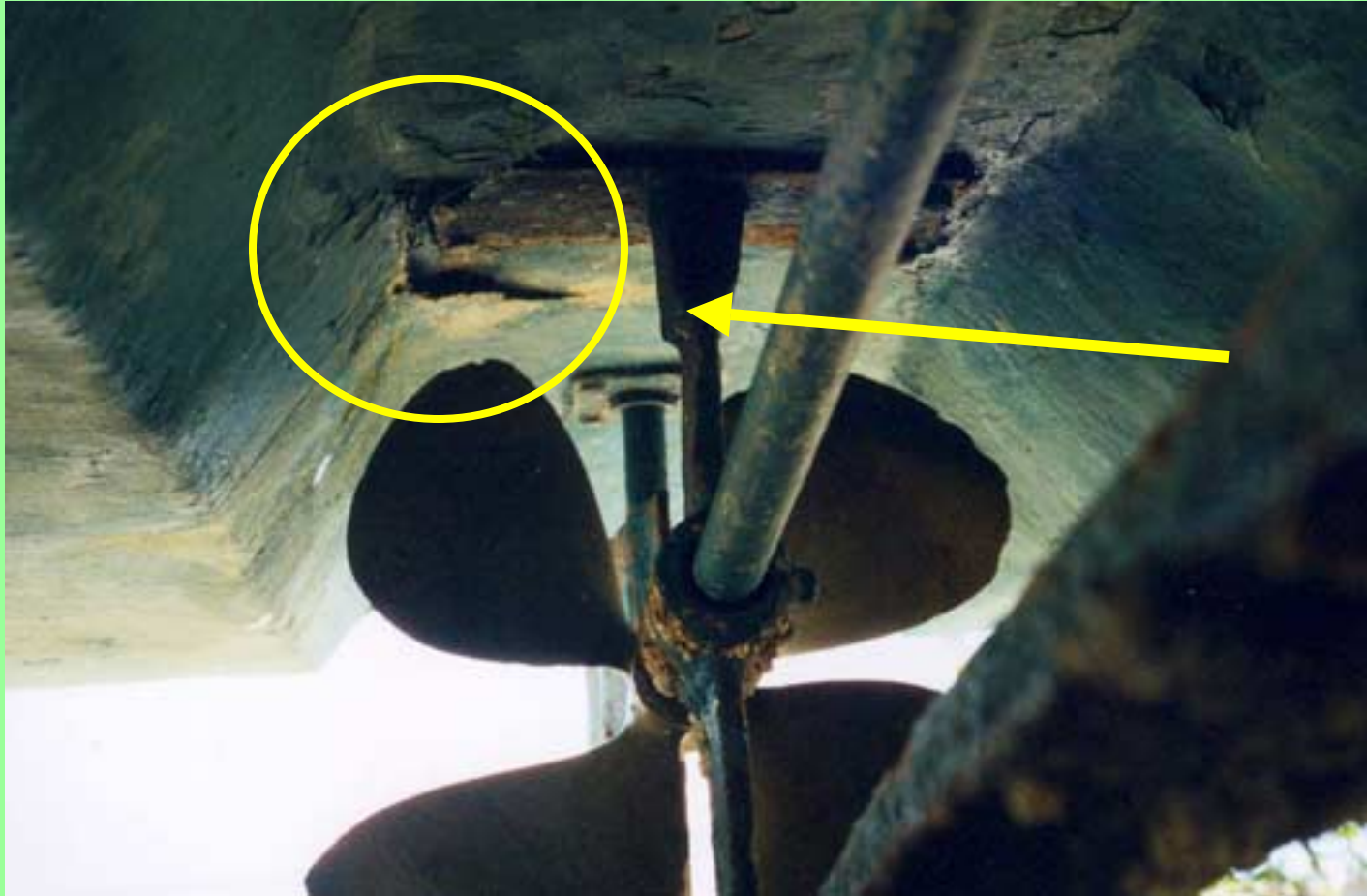
Salvage Operation



National Transportation Safety Board



National Transportation Safety Board



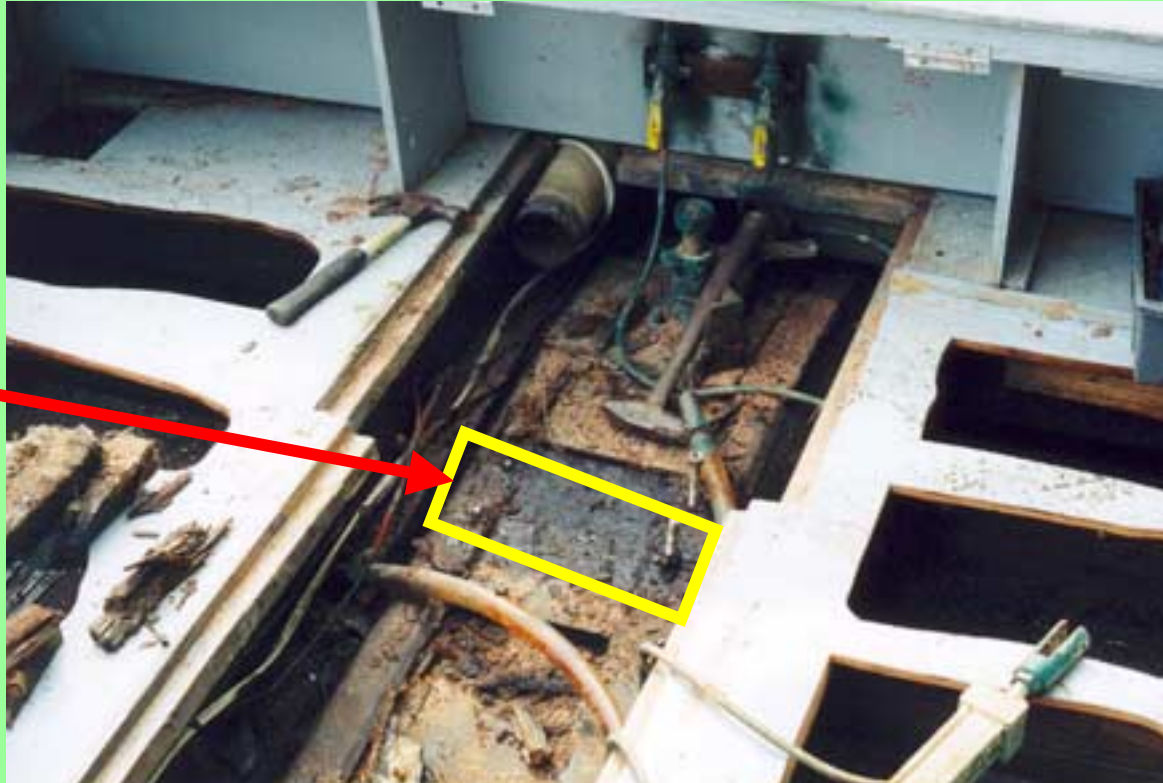
National Transportation Safety Board



National Transportation Safety Board



National Transportation Safety Board



National Transportation Safety Board



National Transportation Safety Board

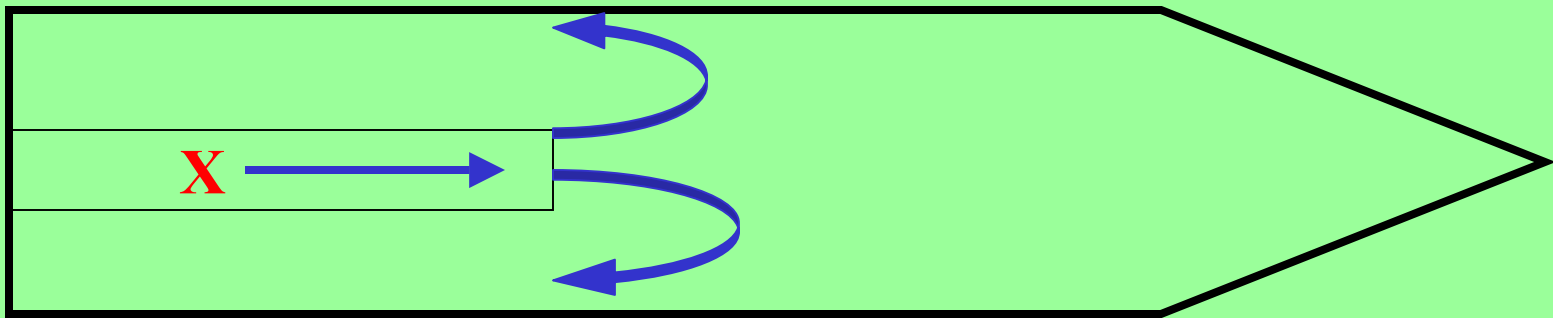


National Transportation Safety Board

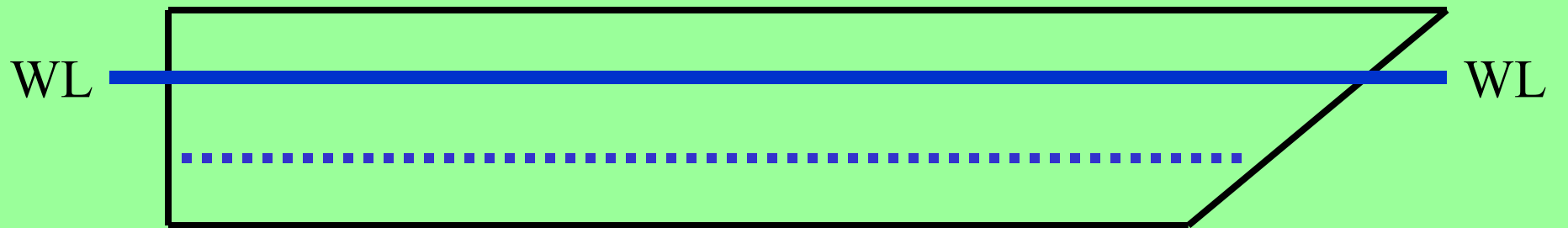
December 2002

- **Grounded first week of December**
- **Returned to marina twice with low freeboard**
- **December 29 returned with starboard list**



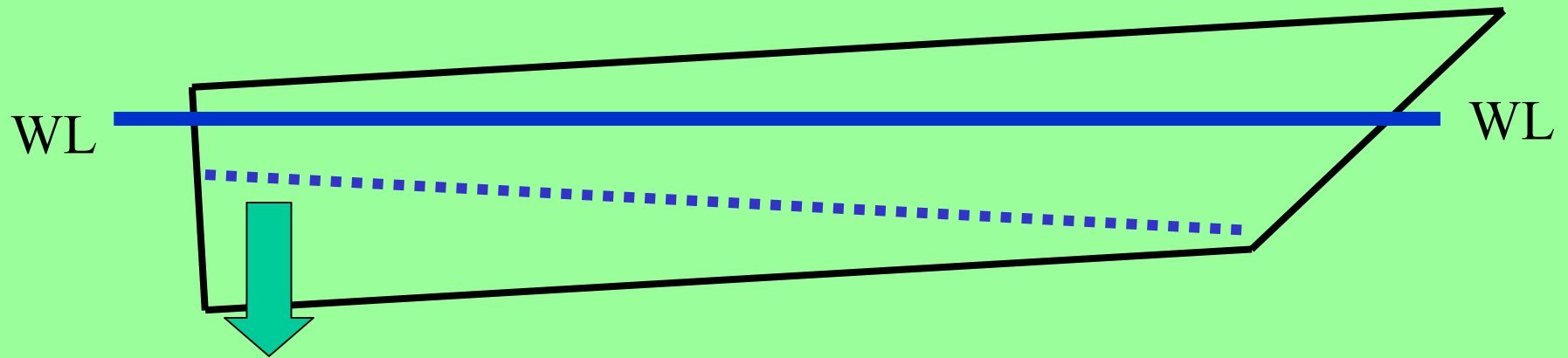


National Transportation Safety Board

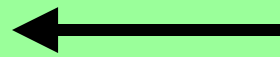


National Transportation Safety Board

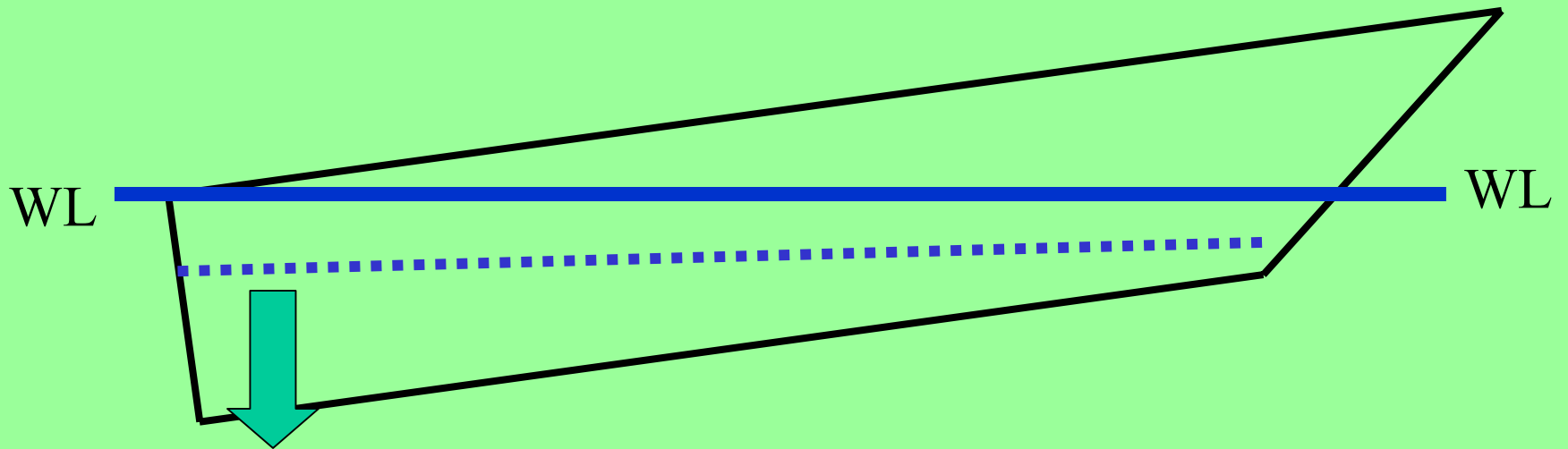
Speed Increased



National Transportation Safety Board



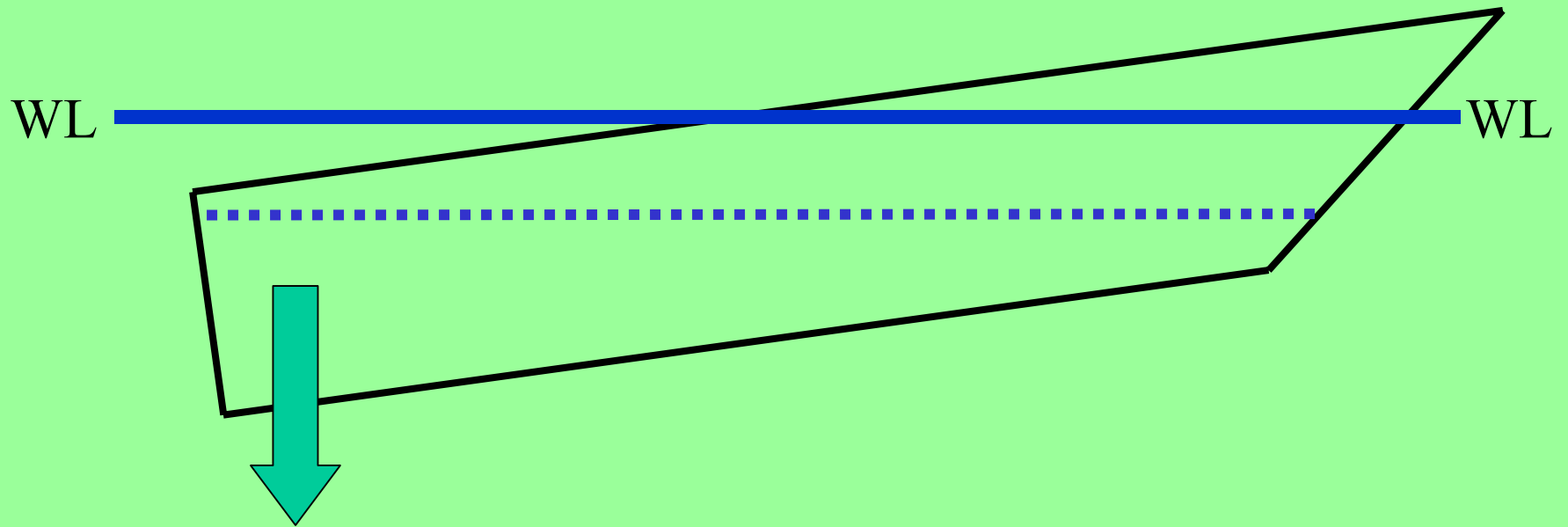
Passengers shifted aft



National Transportation Safety Board

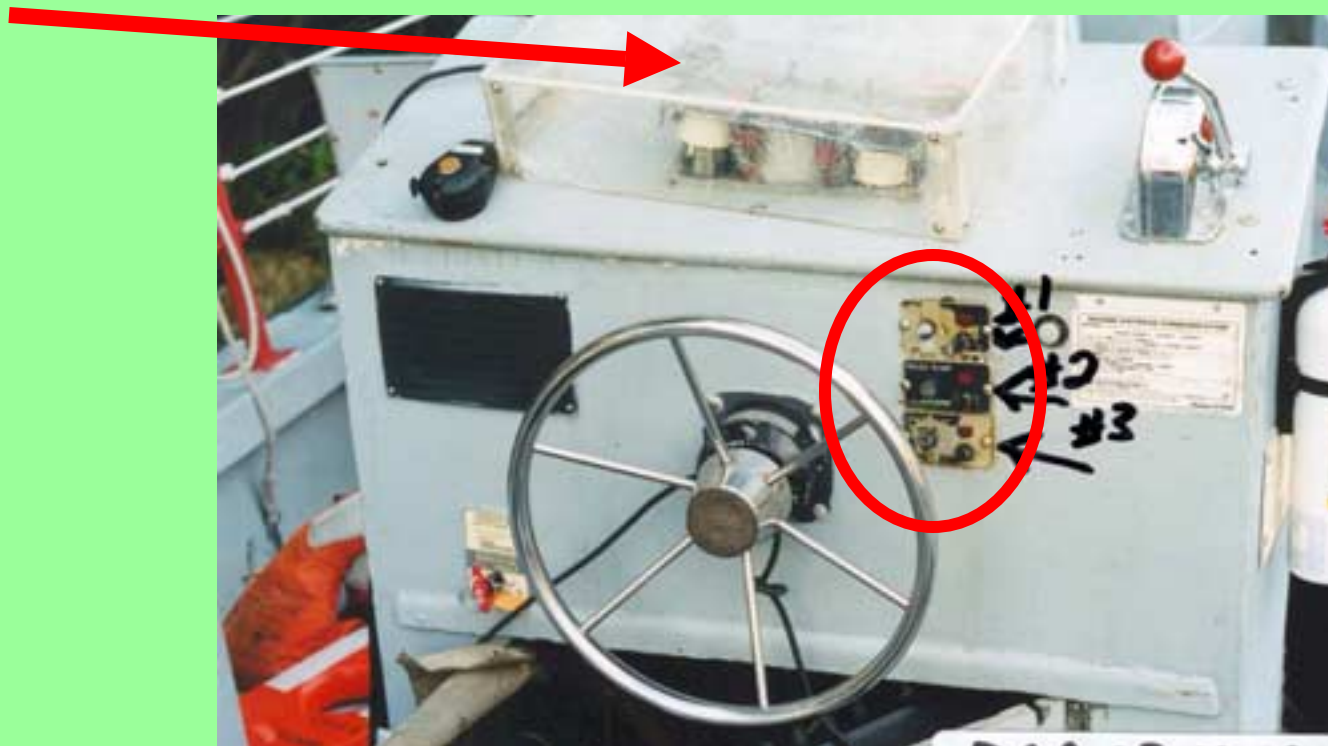


National Transportation Safety Board

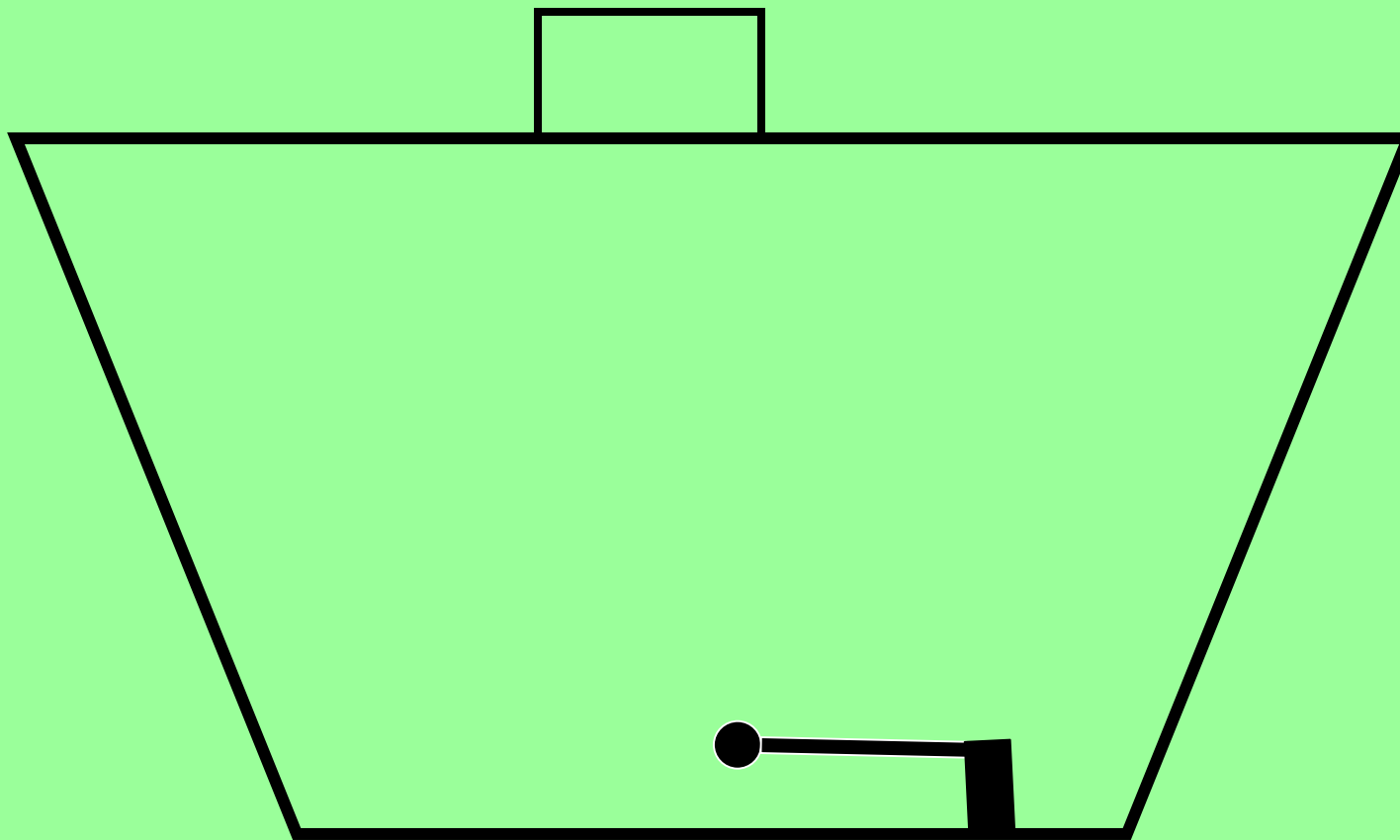


National Transportation Safety Board

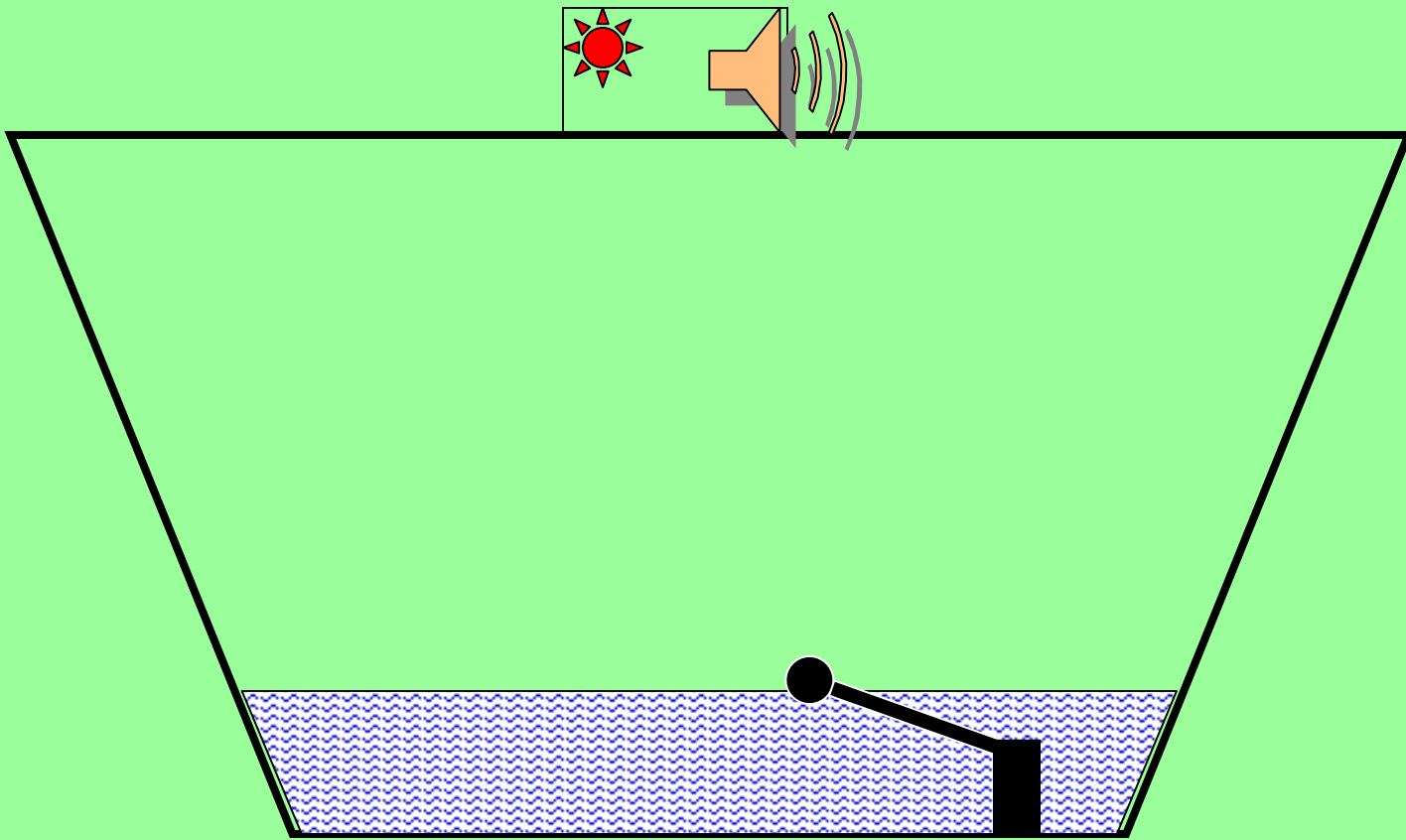
Operator's Console



National Transportation Safety Board



National Transportation Safety Board



National Transportation Safety Board



National Transportation Safety Board

Safety Issues

- **Vessel Maintenance**
- **Company Operations**
- **Lifejacket Stowage**



Office of Research and Engineering



National Transportation Safety Board

Bilge Pump

Dual Alarm

Strut Blocks



Bilge Pump

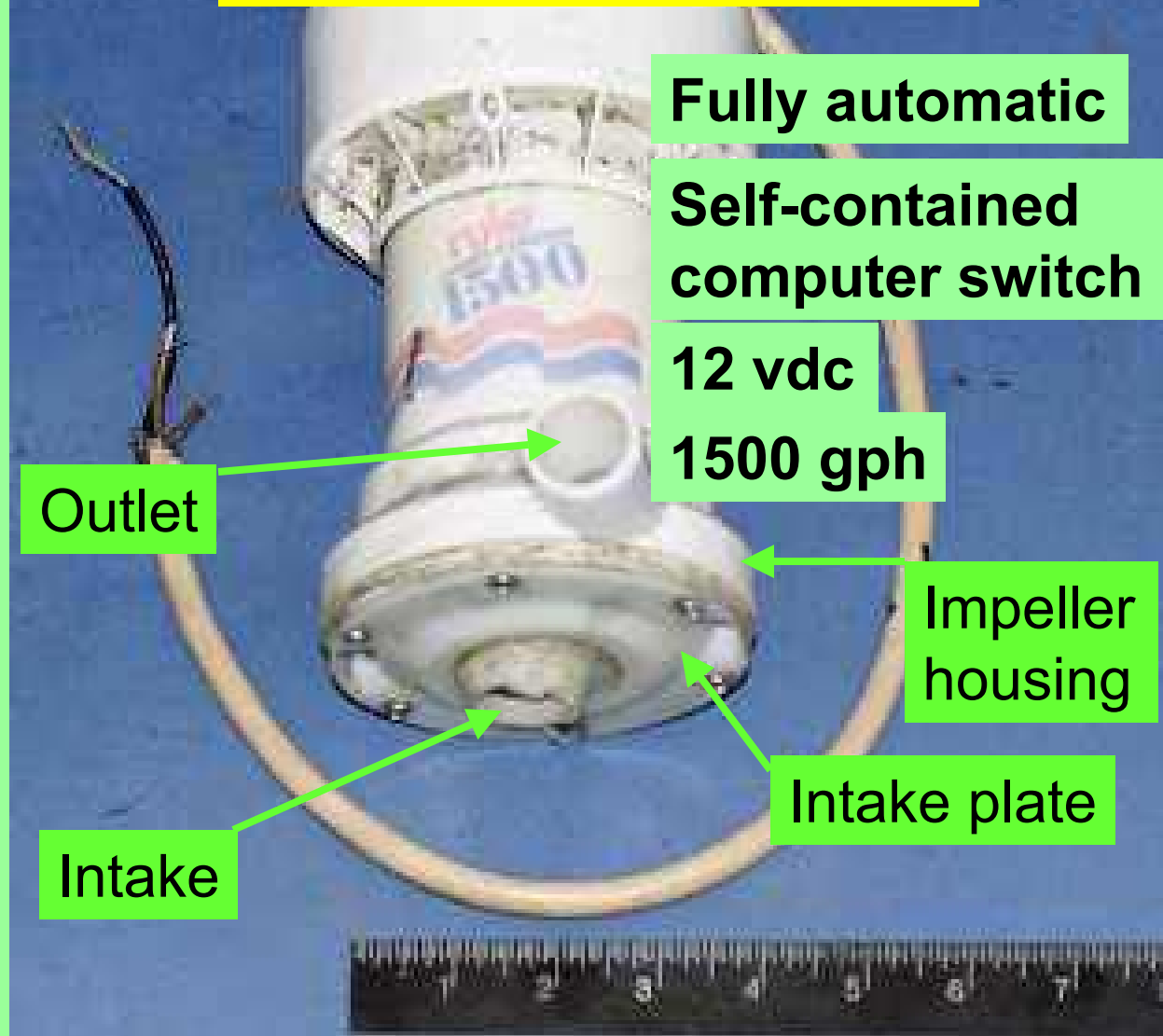


National Transportation Safety Board



National Transportation Safety Board

Rule Computerized 1500 Submersible Bilge Pump



Fully automatic

Self-contained
computer switch

12 vdc

1500 gph

Outlet

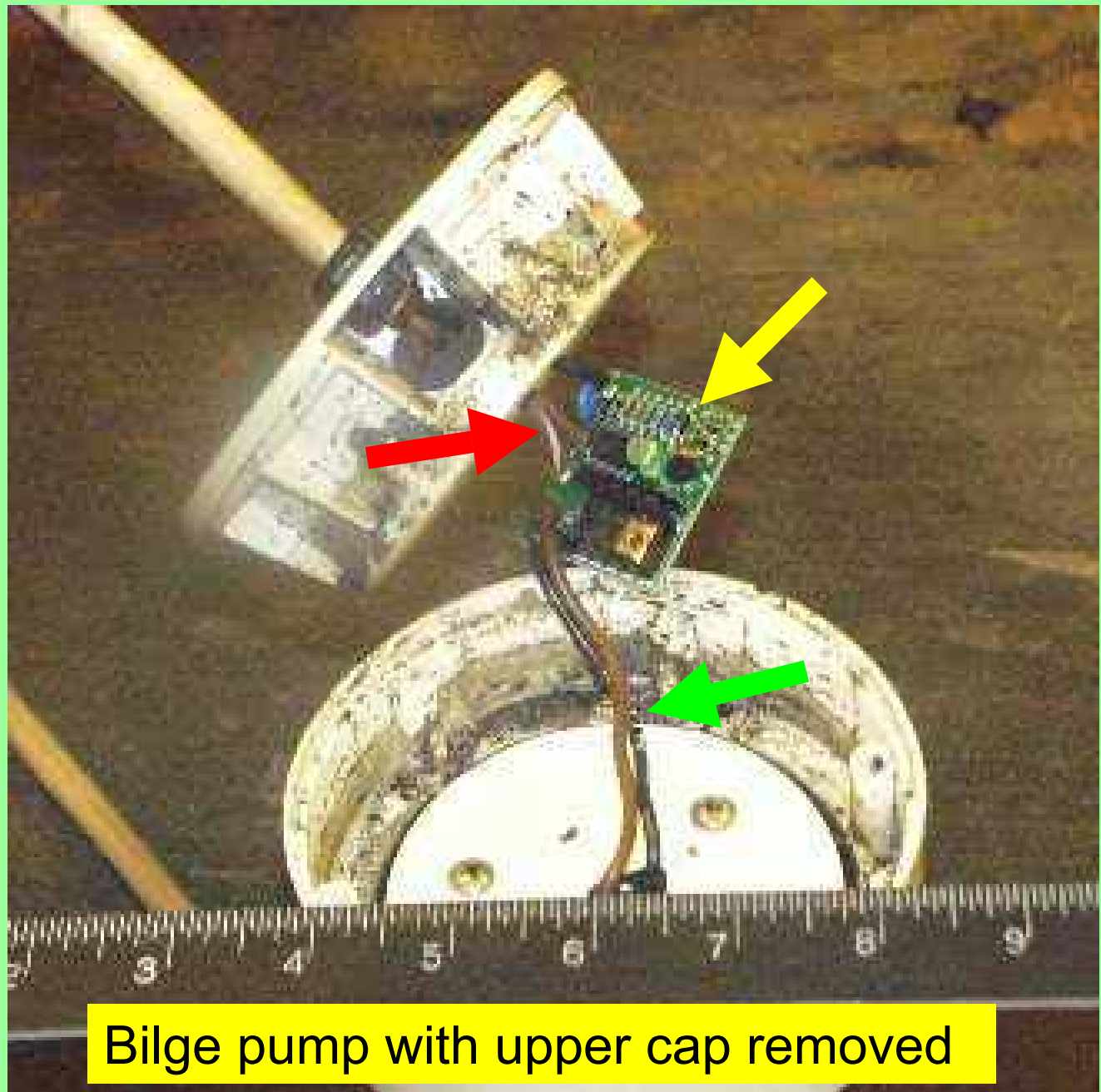
Impeller
housing

Intake

Intake plate



National Transportation Safety Board



Bilge pump with upper cap removed

National Transportation Safety Board



Laboratory finding:

That the bilge pump did not operate during laboratory testing and may not have been functioning at the time of the accident.



Dual Alarm



National Transportation Safety Board



National Transportation Safety Board

Laboratory finding:

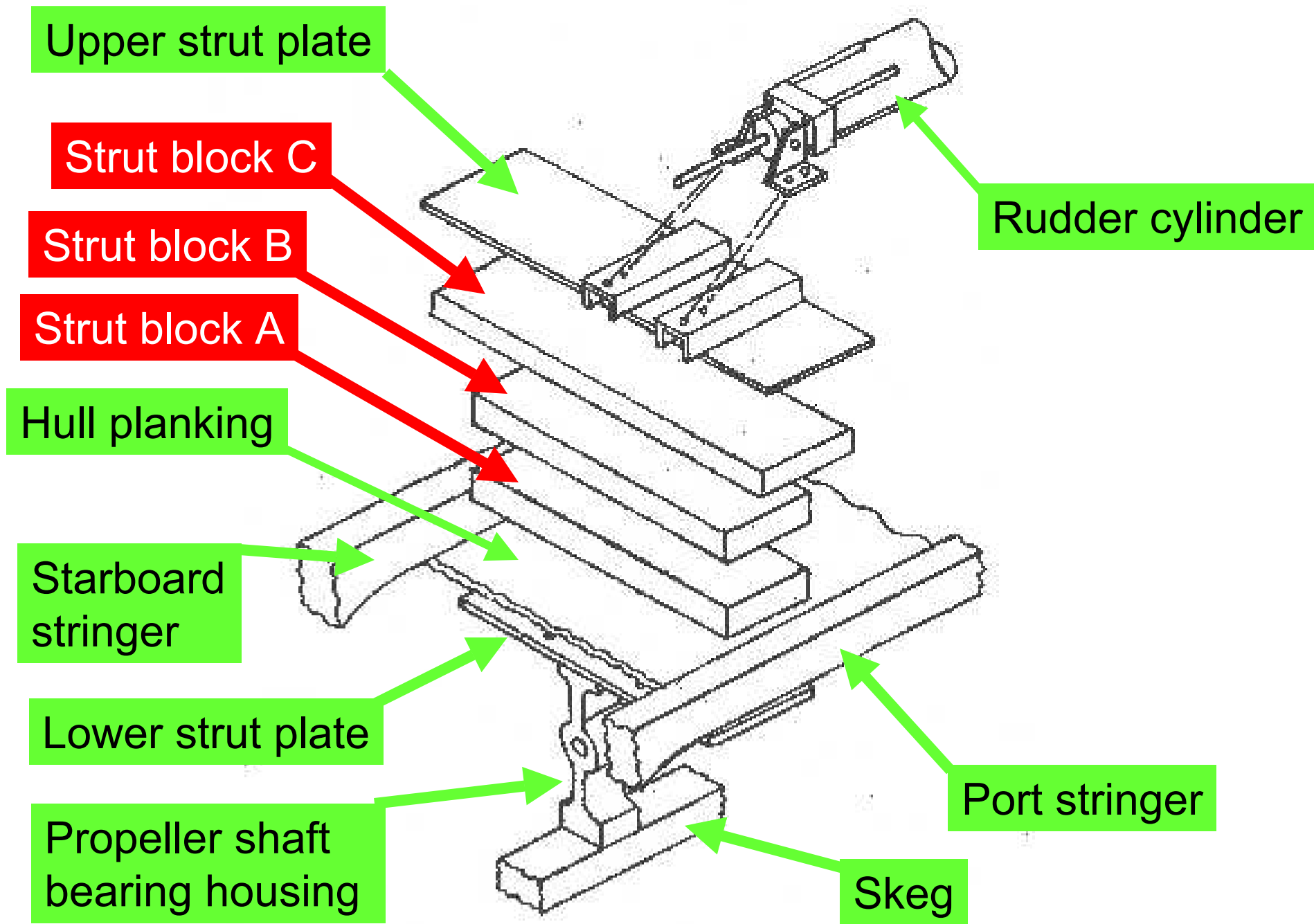
That the dual alarm, part of the bilge high-water level warning system, was functional, but it is likely that it was not connected to the system at the time of the accident.

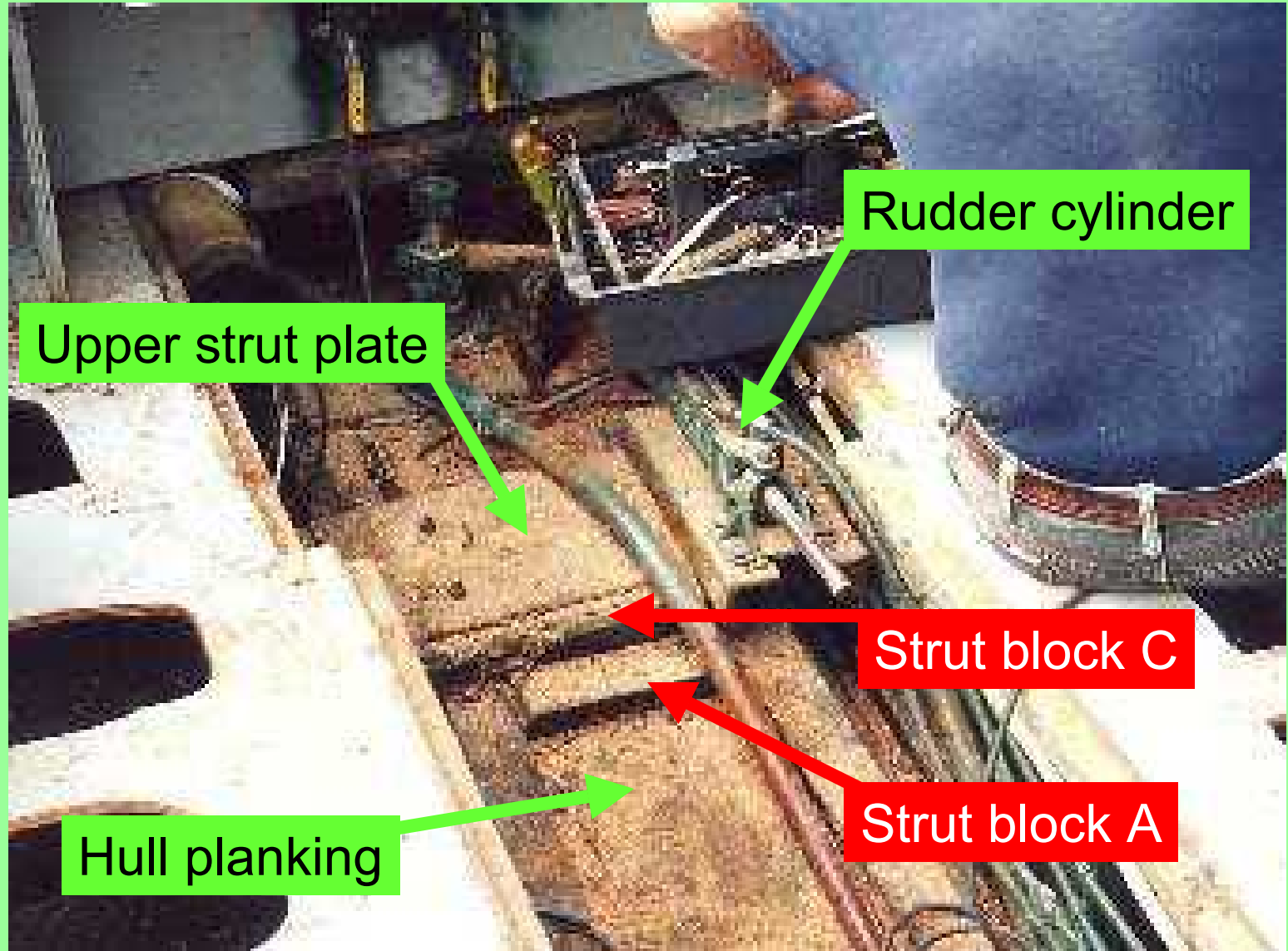


Strut Blocks

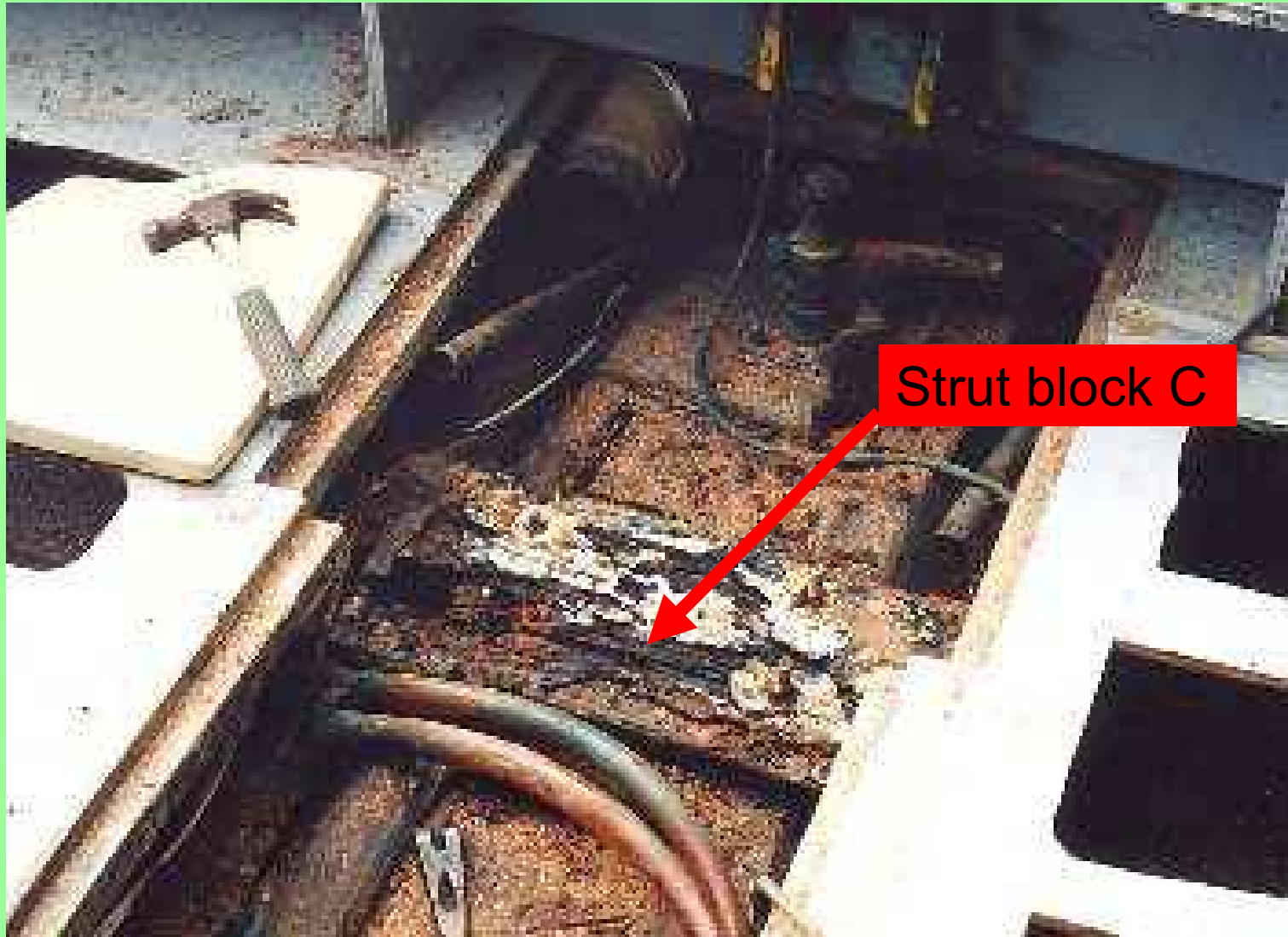


National Transportation Safety Board

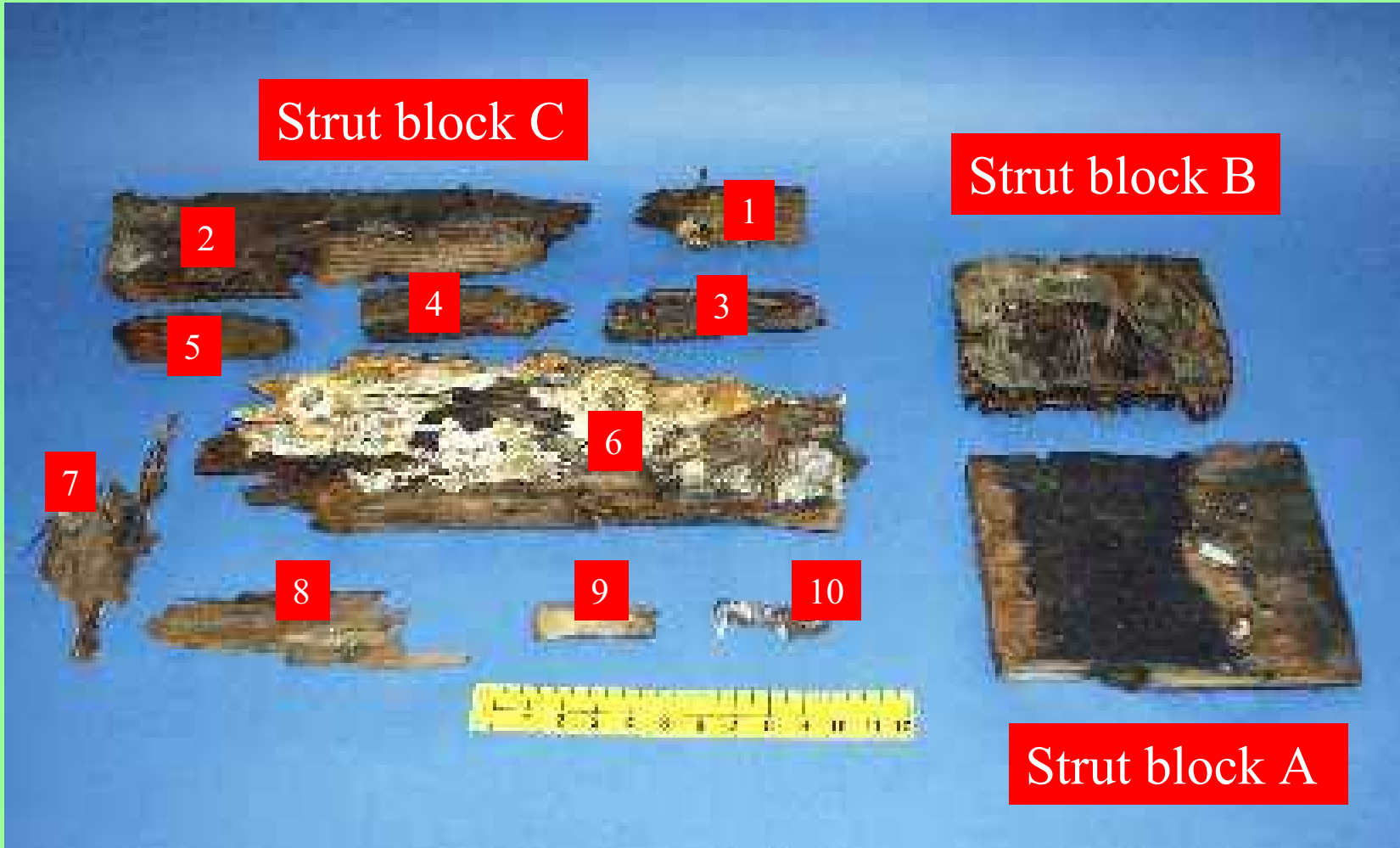




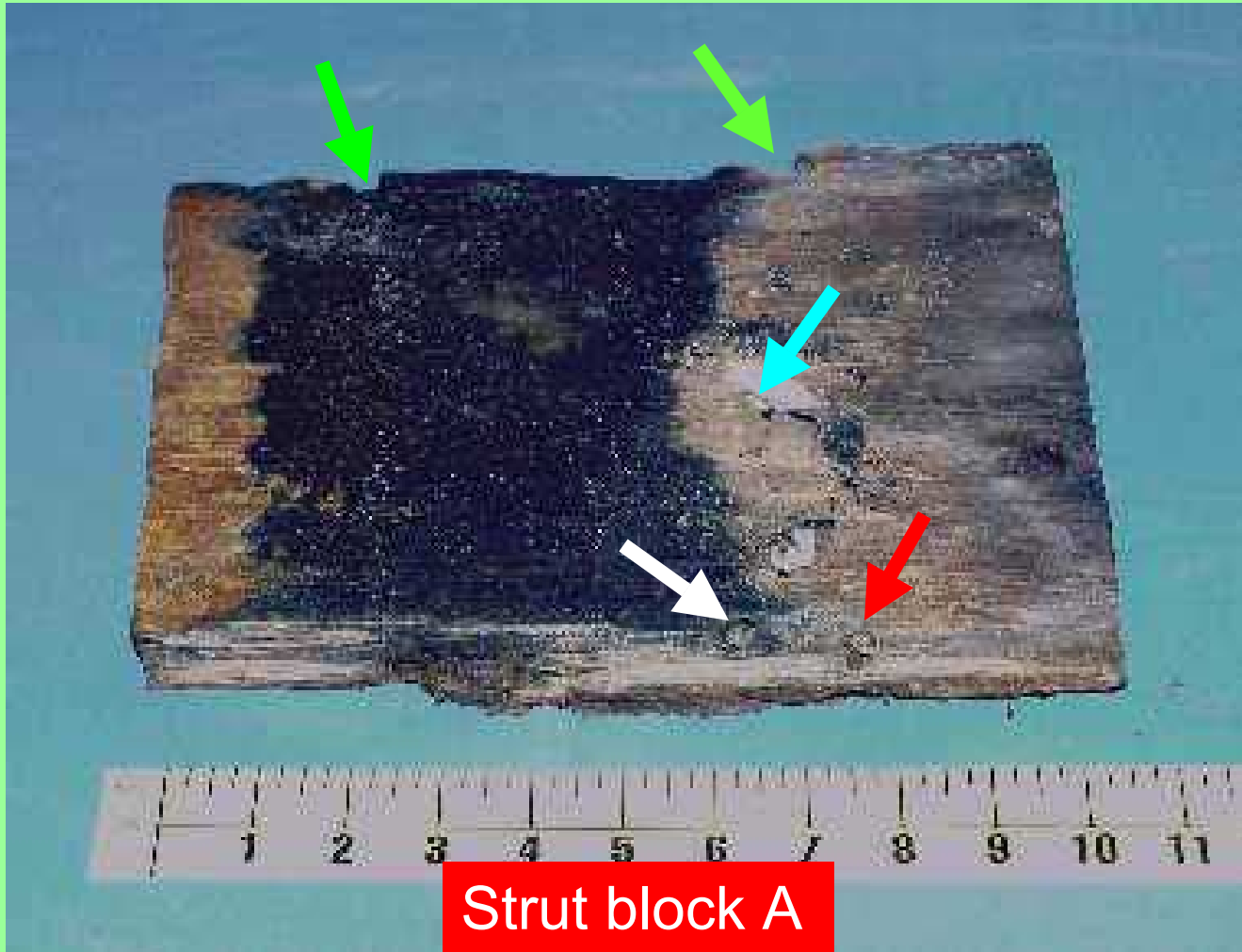
National Transportation Safety Board



National Transportation Safety Board



National Transportation Safety Board



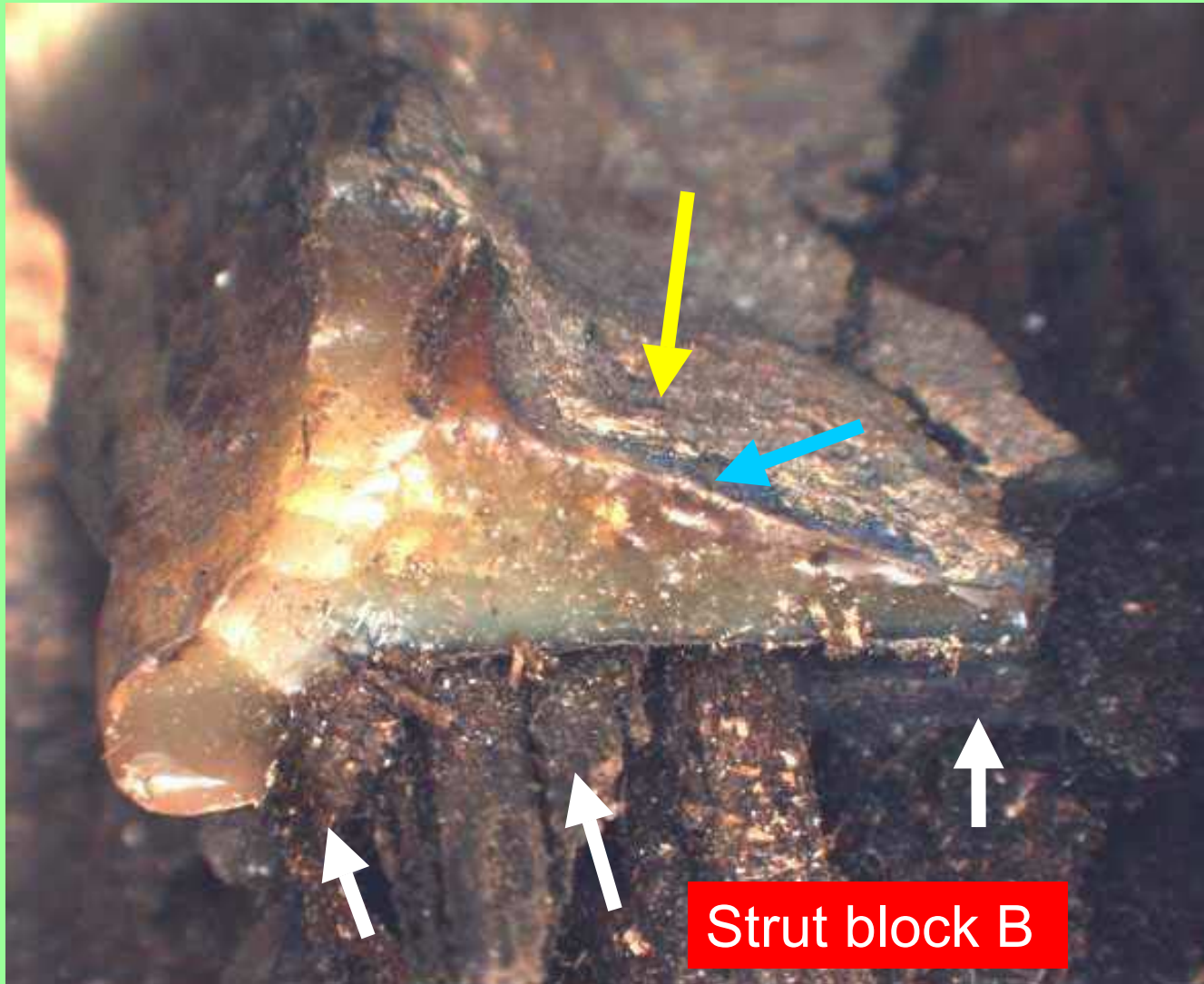
Strut block A



National Transportation Safety Board



National Transportation Safety Board



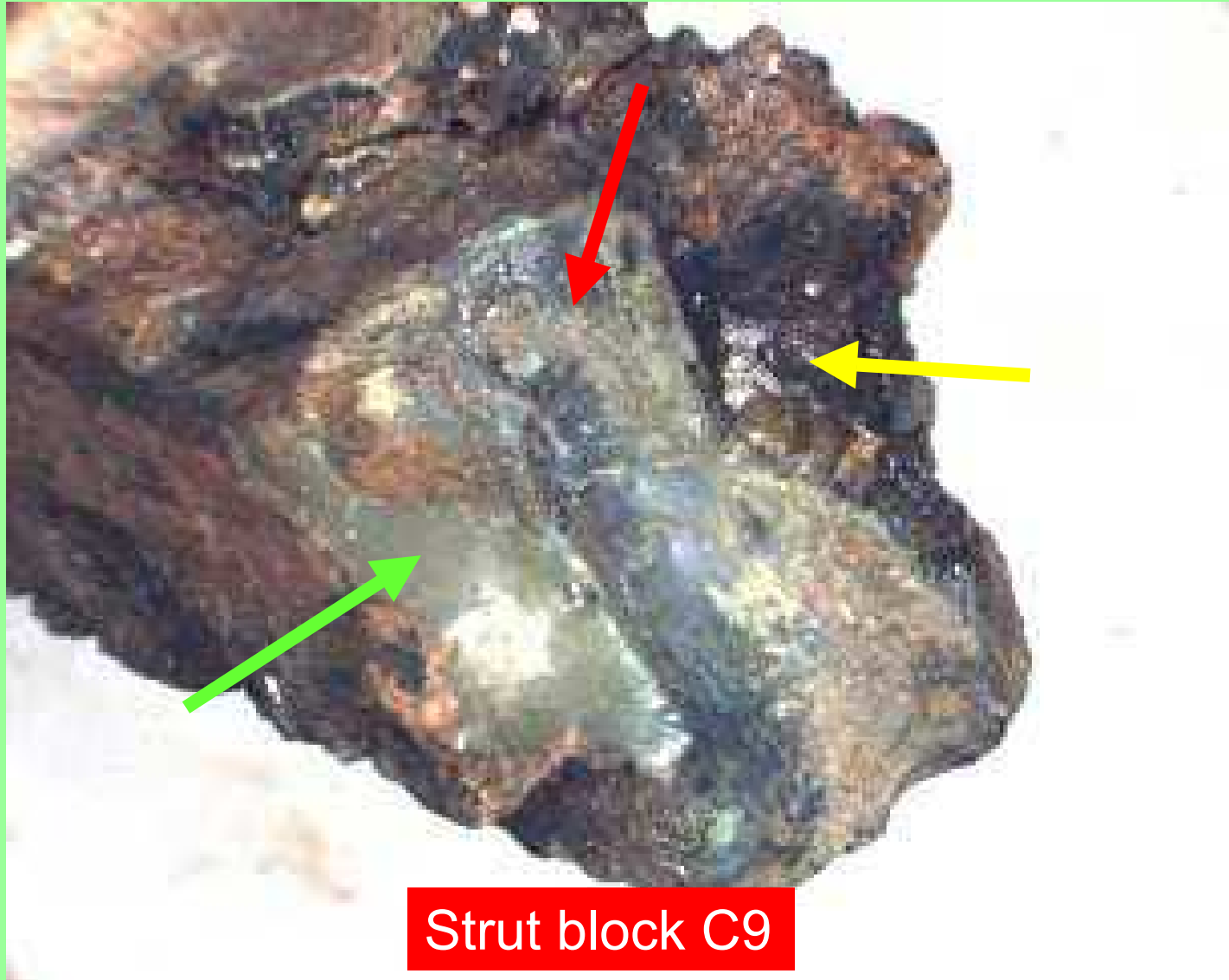
National Transportation Safety Board



Strut block C6



National Transportation Safety Board



National Transportation Safety Board

Laboratory finding:

That decayed wood was repaired, not replaced.



Maintenance Issues

- **No Maintenance Records**
- **Temporary vs. Permanent Repairs**
- **No Post-Casualty Procedures**



Marine Casualty

- **groundings**
- **loss of life or injury**
- **collisions**
- **fires**
- **explosions**
- **other damage impairing seaworthiness**



National Park Service Concessionaire Requirements

Took immediate action for Everglades National Park



National Transportation Safety Board

Proposed Safety Recommendation



Require that concessionaire companies operating passenger vessels in your jurisdictions develop and implement a preventive maintenance program for all systems affecting the safe operation of their vessels, including the hull and mechanical and electrical systems.



National Transportation Safety Board

Port Imperial Manhattan



National Transportation Safety Board

Port Imperial Manhattan



National Transportation Safety Board



Safety Recommendation

M-02-05

Require that companies operating domestic passenger vessels develop and implement a preventive maintenance program for all systems affecting the safe operation of their vessels, including the hull and mechanical and electrical systems.



Operational Procedures

- **Failure to report casualty**
- **Failure to carry required deckhand**



Operational Procedures

- **Masters operating outside channel**
- **Masters not aware of High-Level Bilge Alarm**



Lifejacket Stowage



National Transportation Safety Board

Lifejacket Locker



National Transportation Safety Board

Coast Guard Regulations

- **Convenient stowage**
- **Distributed throughout accommodation spaces**
- **If practicable, float free**
- **Readily available**



Port Imperial Manhattan Lifejacket Locker



National Transportation Safety Board

Safety Recommendation M-02-13



Issue a directive to small

**“Closed-
Acceptable
Action”**

segregated.



National Transportation Safety Board

Bayside Blaster



National Transportation Safety Board

Safety Recommendation

M-02-28

Evaluate inspection that small applicable for lifeja manning.

**“Closed-
Acceptable
Action”**

**safety
ensure
ce with
ements
s and**



Child-Sized Lifejackets



National Transportation Safety Board

Advance Safety Recommendation M-03-01

Establish a
regular basis
who operate
an appropriate
on board.

**“Open-
Acceptable
Response”**

y, on a
onaires
n carry
ry child

