

Community Partnerships for Translational Research

Daniel S. Blumenthal, MD, MPH

Professor and Chair

Community Health & Preventive
Medicine

Morehouse School of Medicine

Agenda

- Health disparities
- Translational research
- Community-based participatory research
- Who represents the community?
- What can translational community-based participatory disparities research tell us?

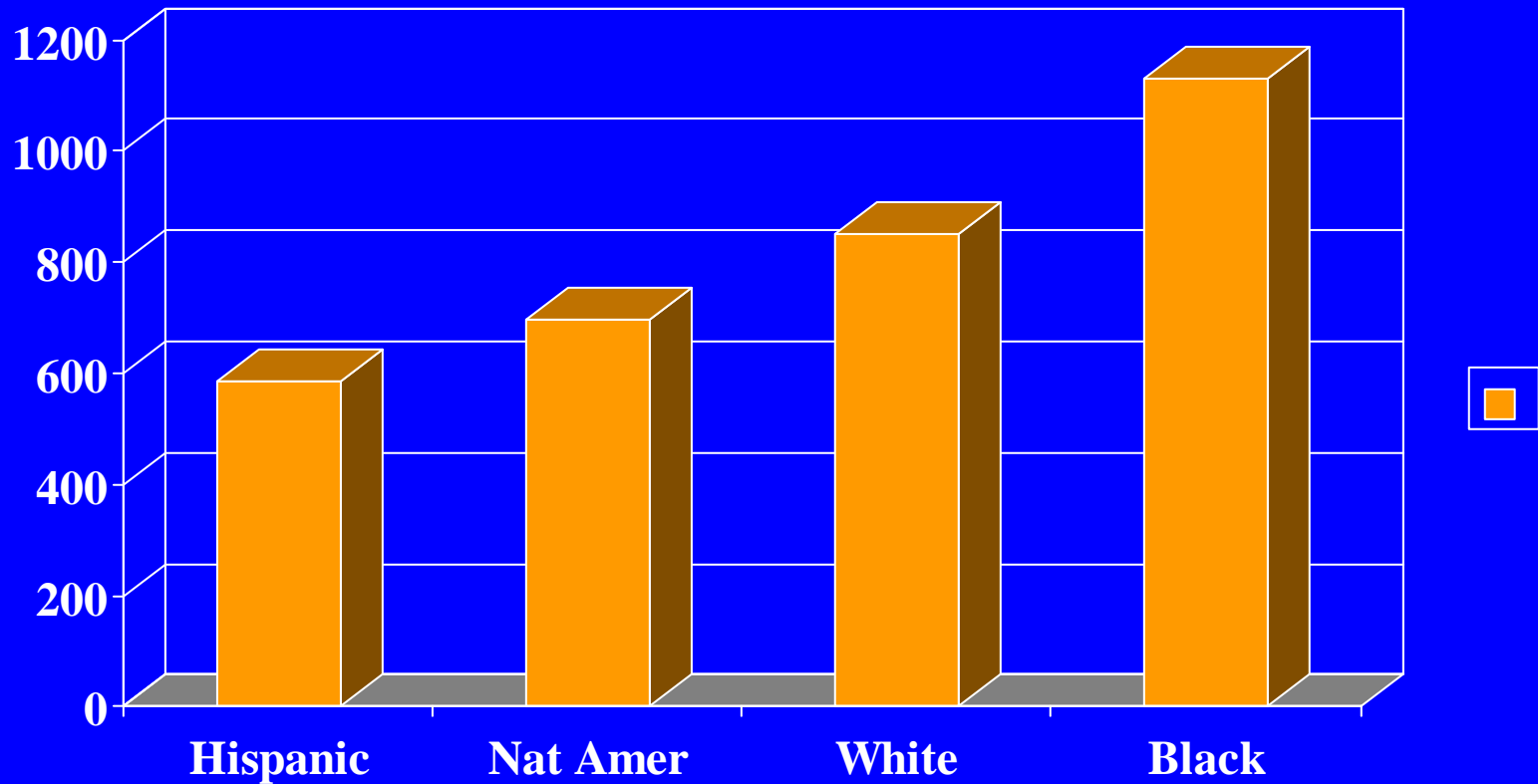
Mortality Rates, All Causes

Deaths/100,000 population – age-adjusted

Source: Health, United States, 2005

- Hispanic 629.3
- Native American 677.4
- White 837.5
- Black 1,083.3

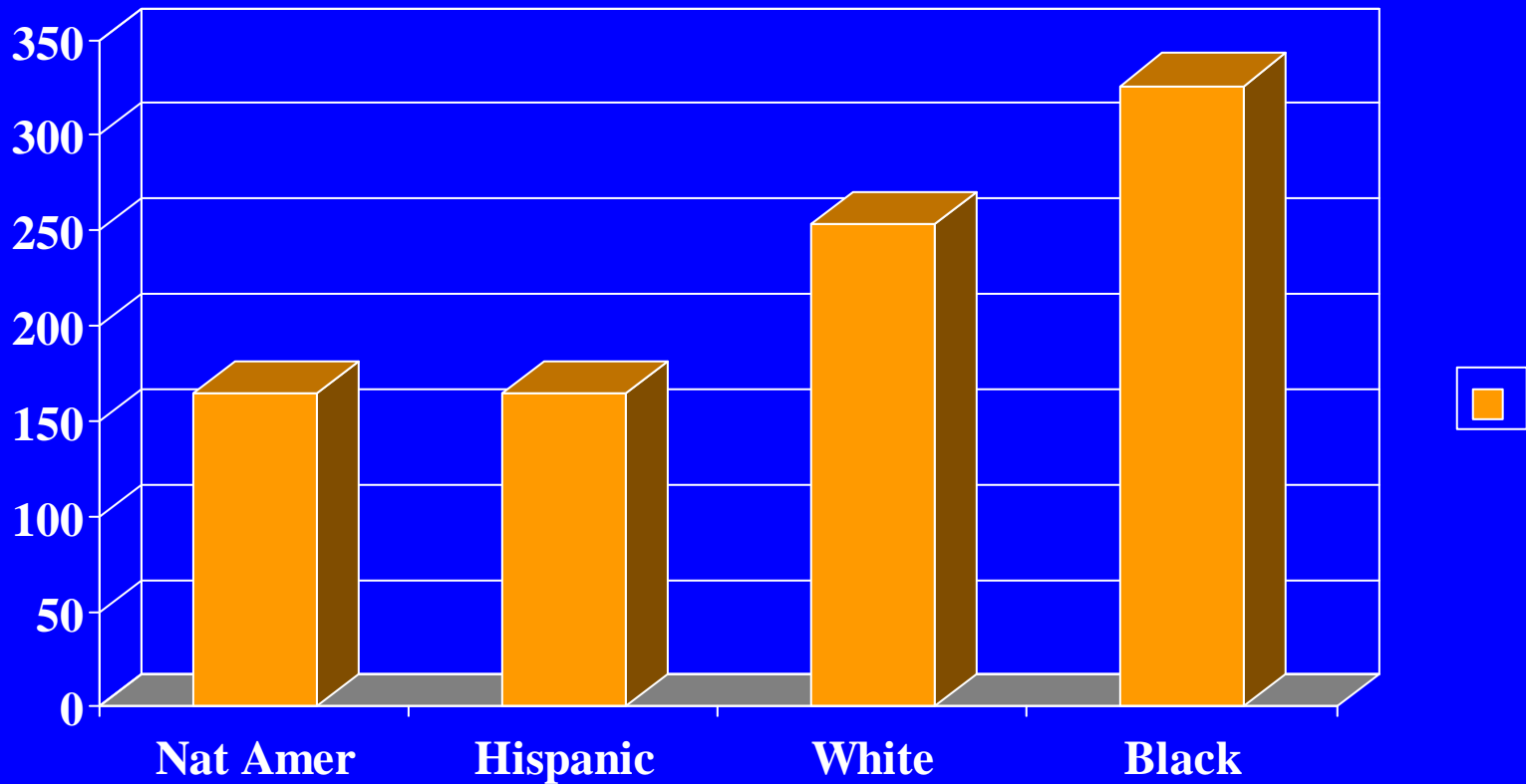
Mortality Rates



Heart Disease Mortality Rates

- Native American 157.4
- Hispanic 180.5
- White 239.2
- Black 308.4

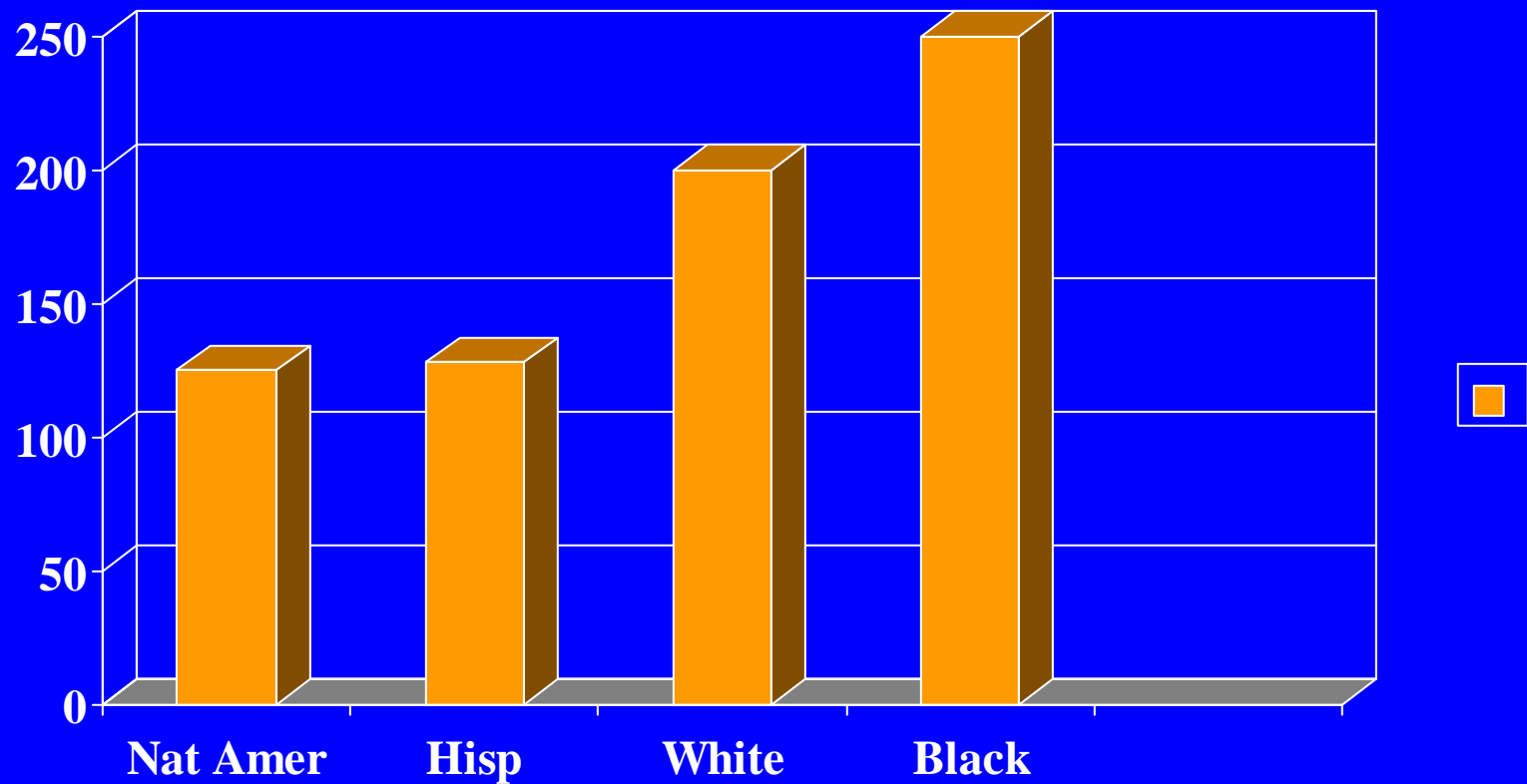
Heart Disease Mortality



Cancer Mortality Rates

- Native American 125.4
- Hispanic 128.4
- White 195.6
- Black 238.8

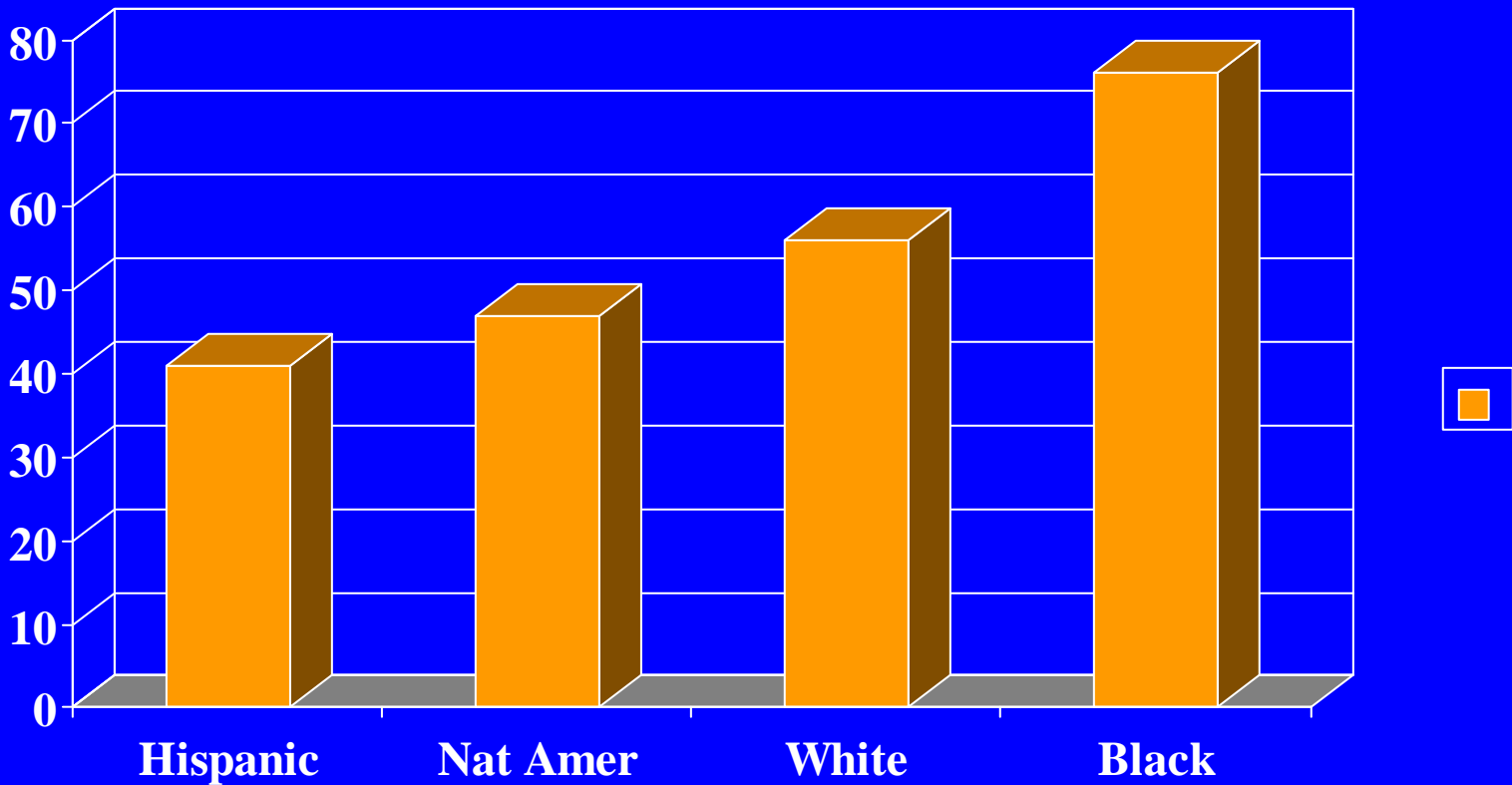
Cancer Mortality



Stroke Mortality Rates

- Hispanic 41.3
- Native American 47.5
- White 54.6
- Black 76.3

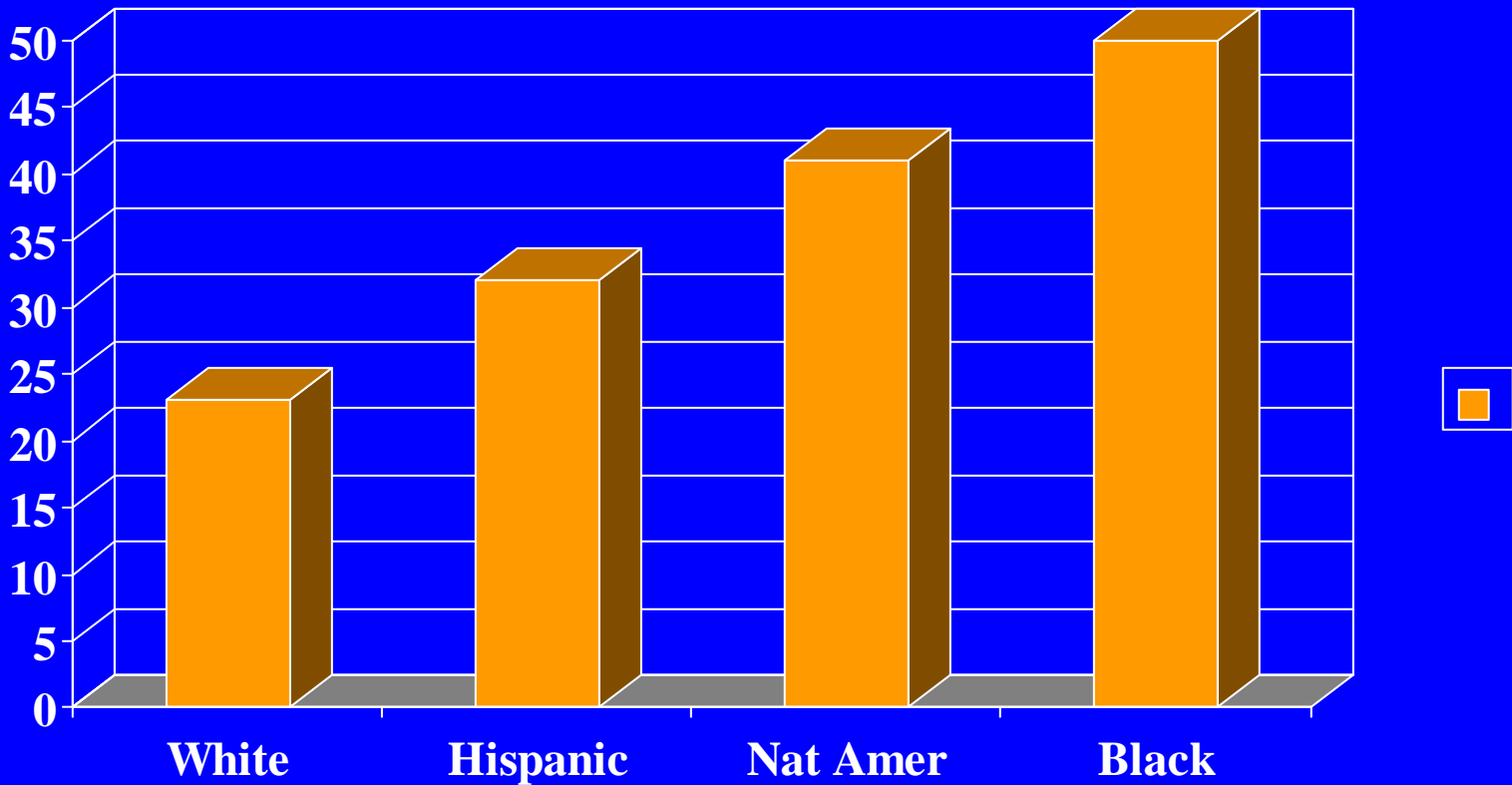
Stroke Mortality



Diabetes Mortality Rates

- White 22.2
- Hispanic 35.6
- Native American 43.2
- Black 49.5

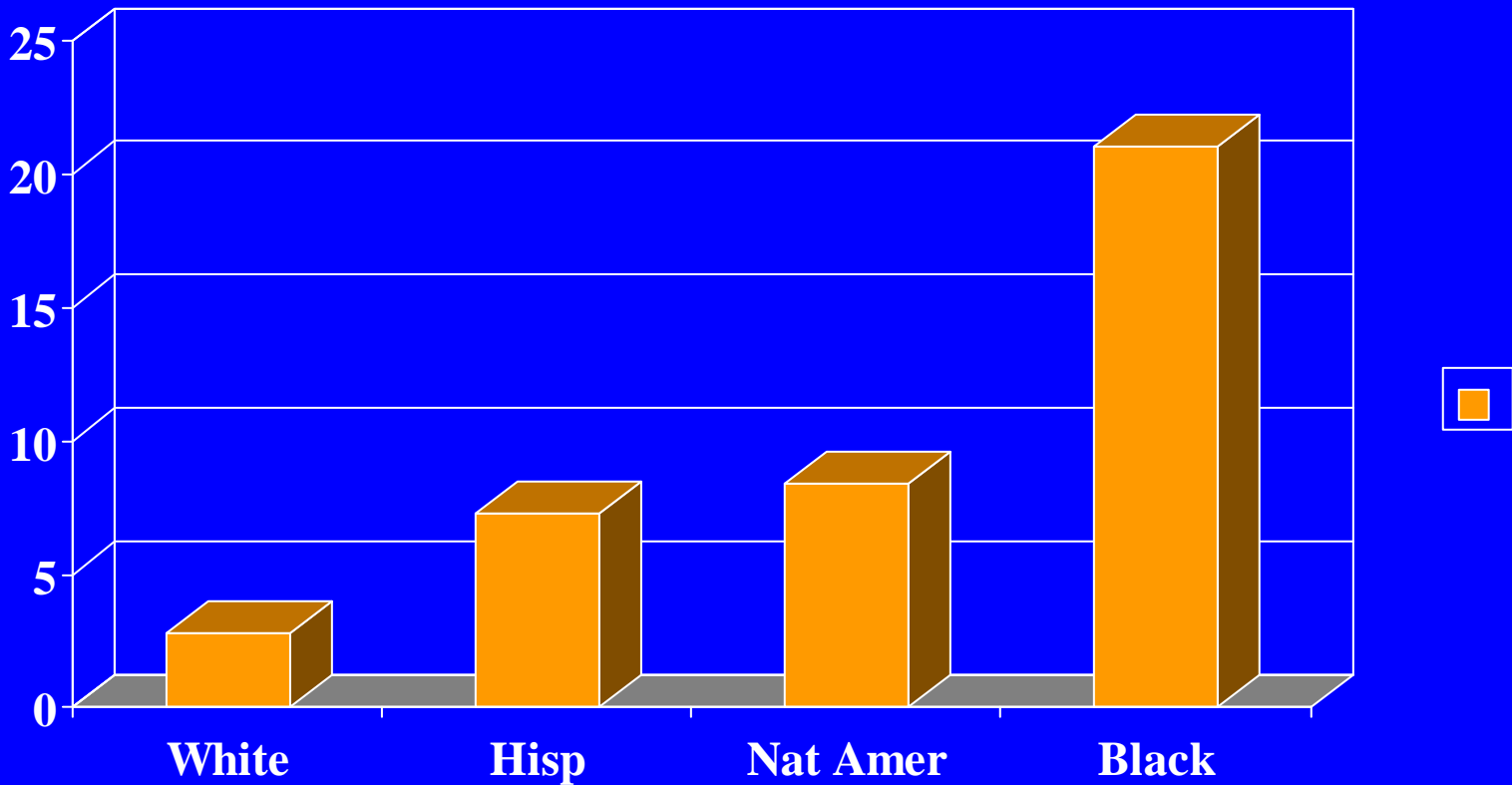
Diabetes Mortality



Homicide Mortality Rates

- White 2.8
- Hispanic 7.3
- Native American 8.4
- Black 21.0

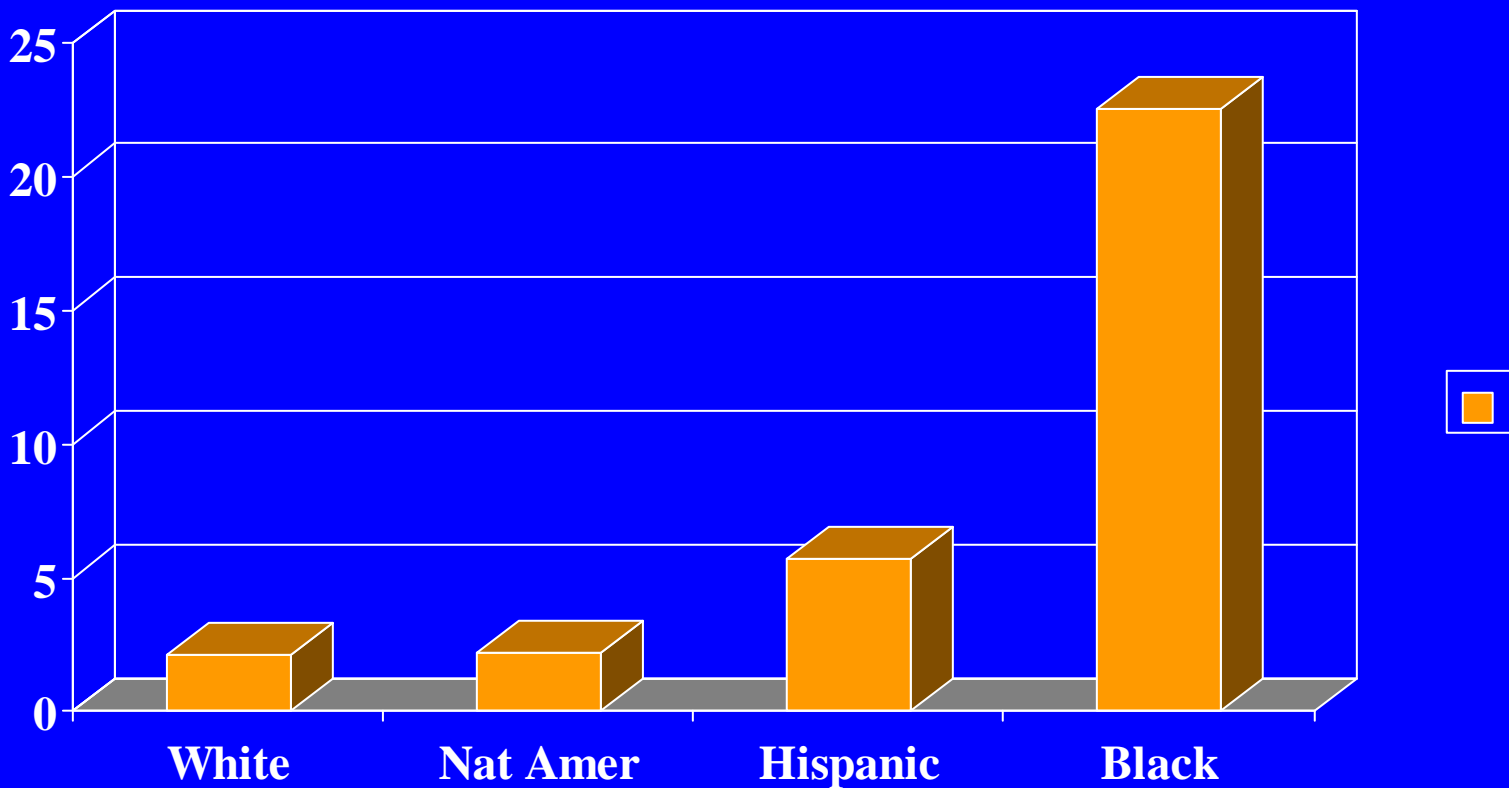
Homicide Mortality



AIDS Mortality Rates

- White 2.1
- Native American 2.2
- Hispanic 5.8
- Black 22.5

AIDS Mortality



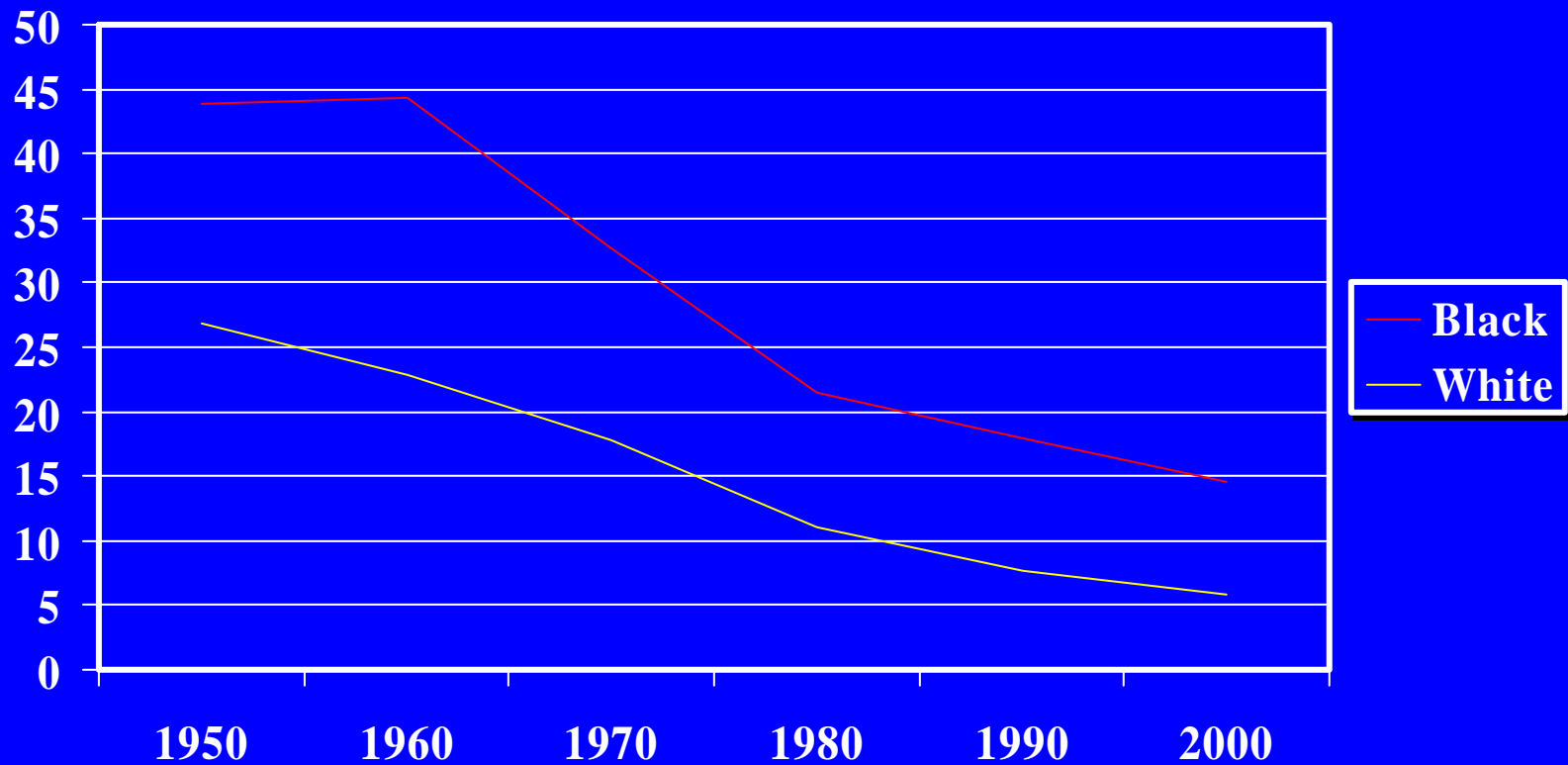
Infant Mortality

Infant Deaths/1000 live births

- Asian/Pacific Islander 4.8
- Hispanic 5.6
- White 5.8
- Native American 8.6
- Black 13.8

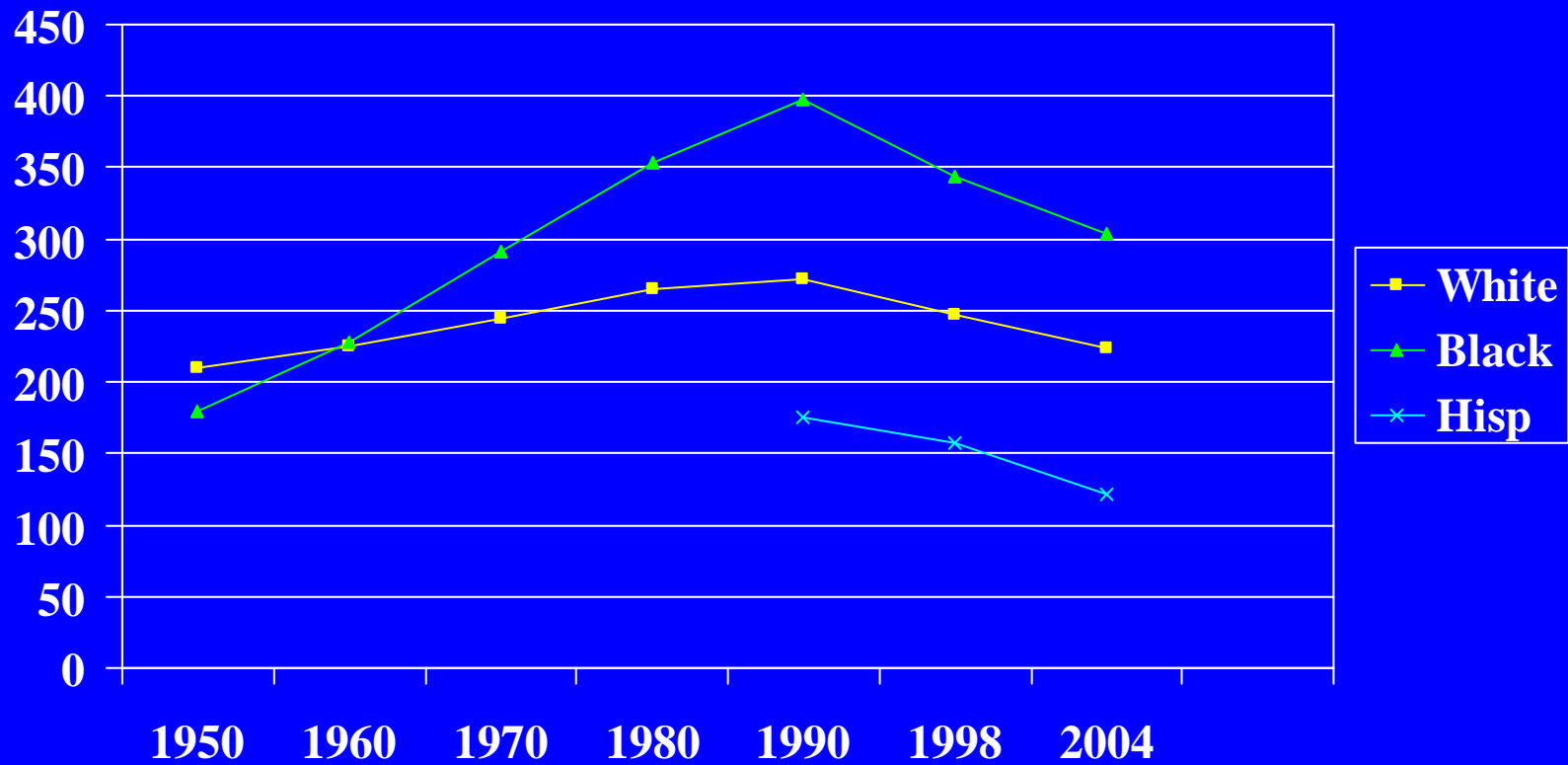
Infant Mortality, U.S. , 1950-2002

Infant deaths/1000 live births



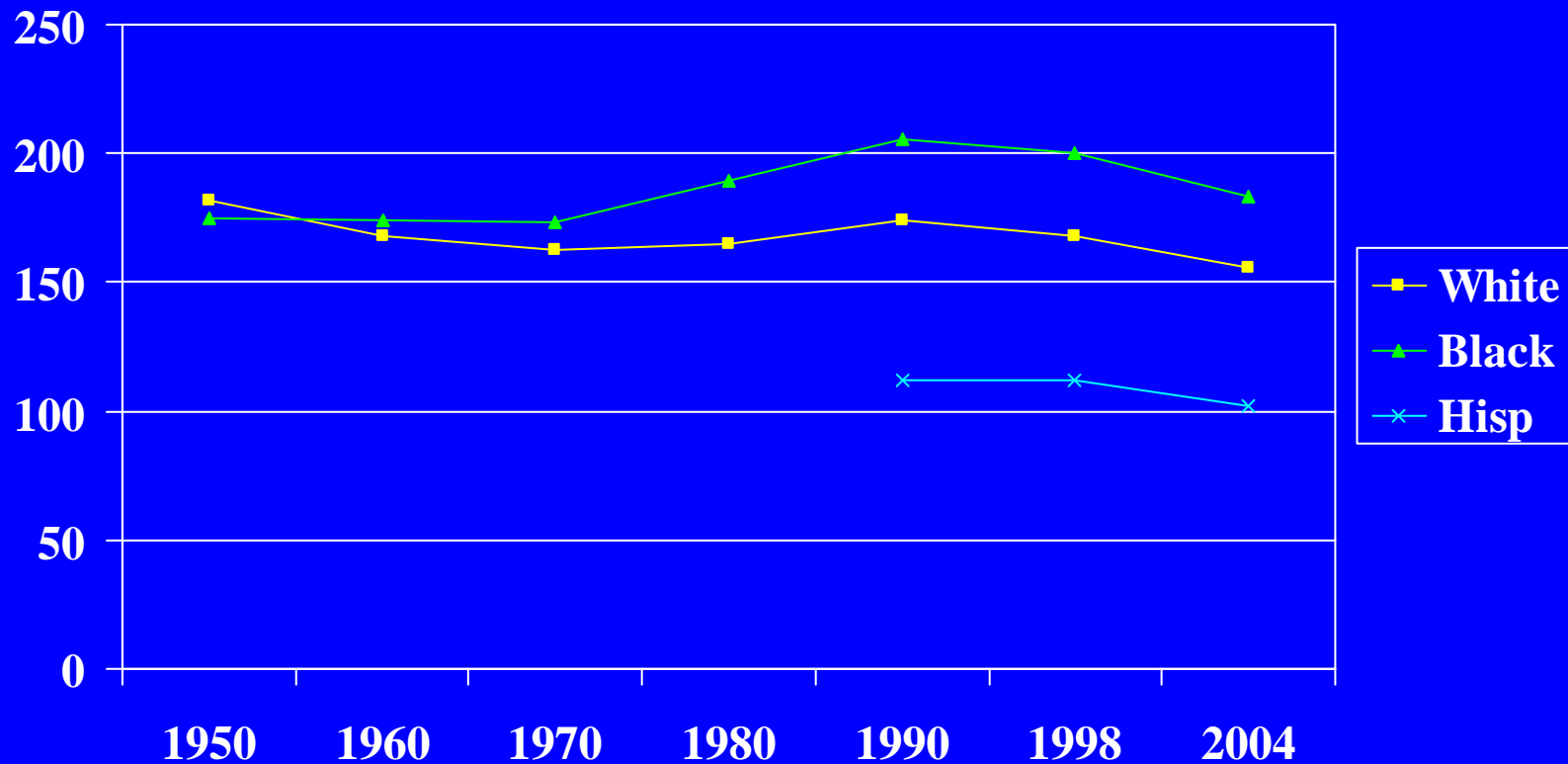
Cancer Mortality Rates, Age-Adjusted, Males, All Sites, U.S.

Deaths/100,000



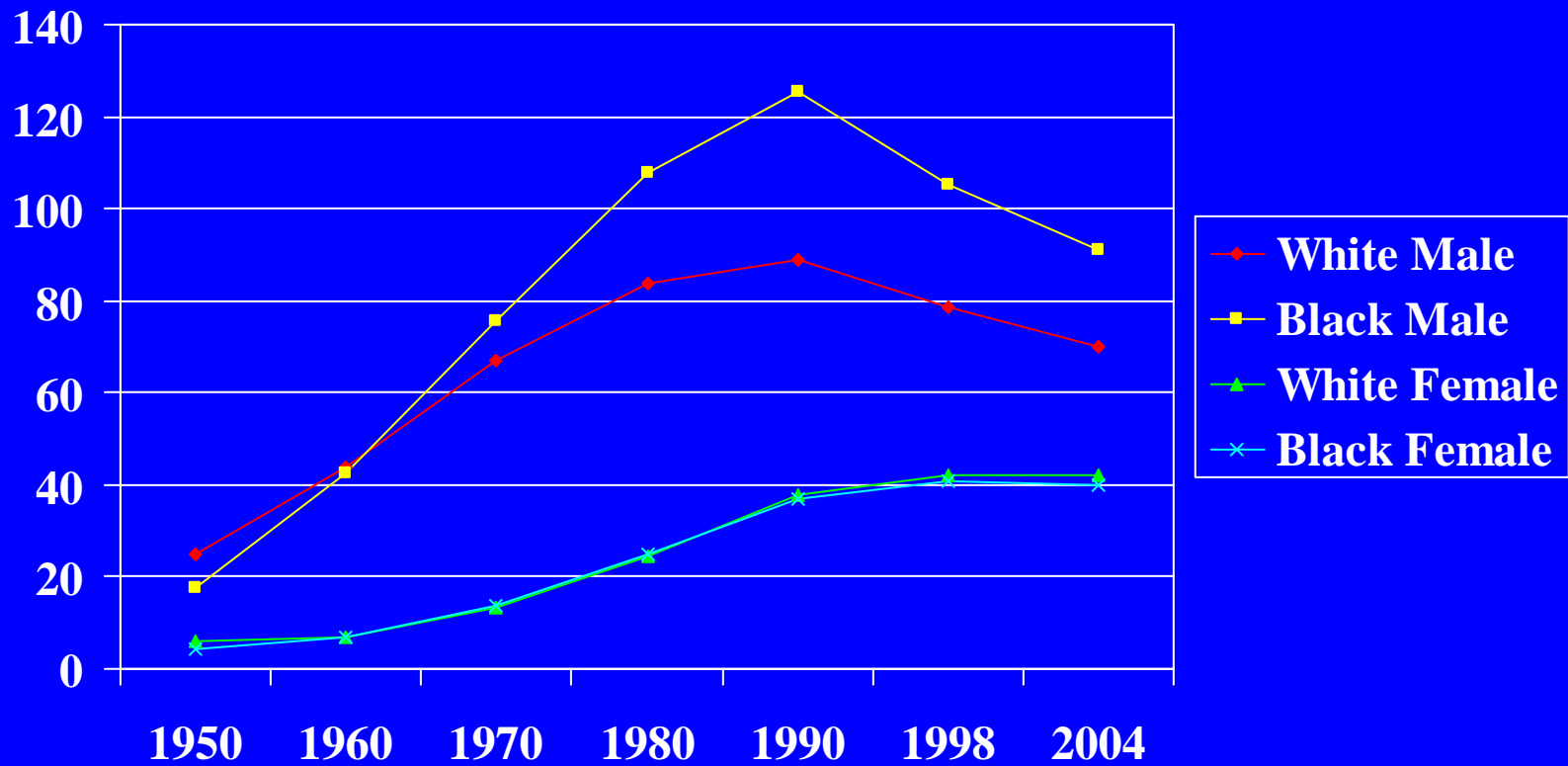
Cancer Mortality Rates, Age-Adjusted, Females, All Sites, U.S.

Deaths/100,000

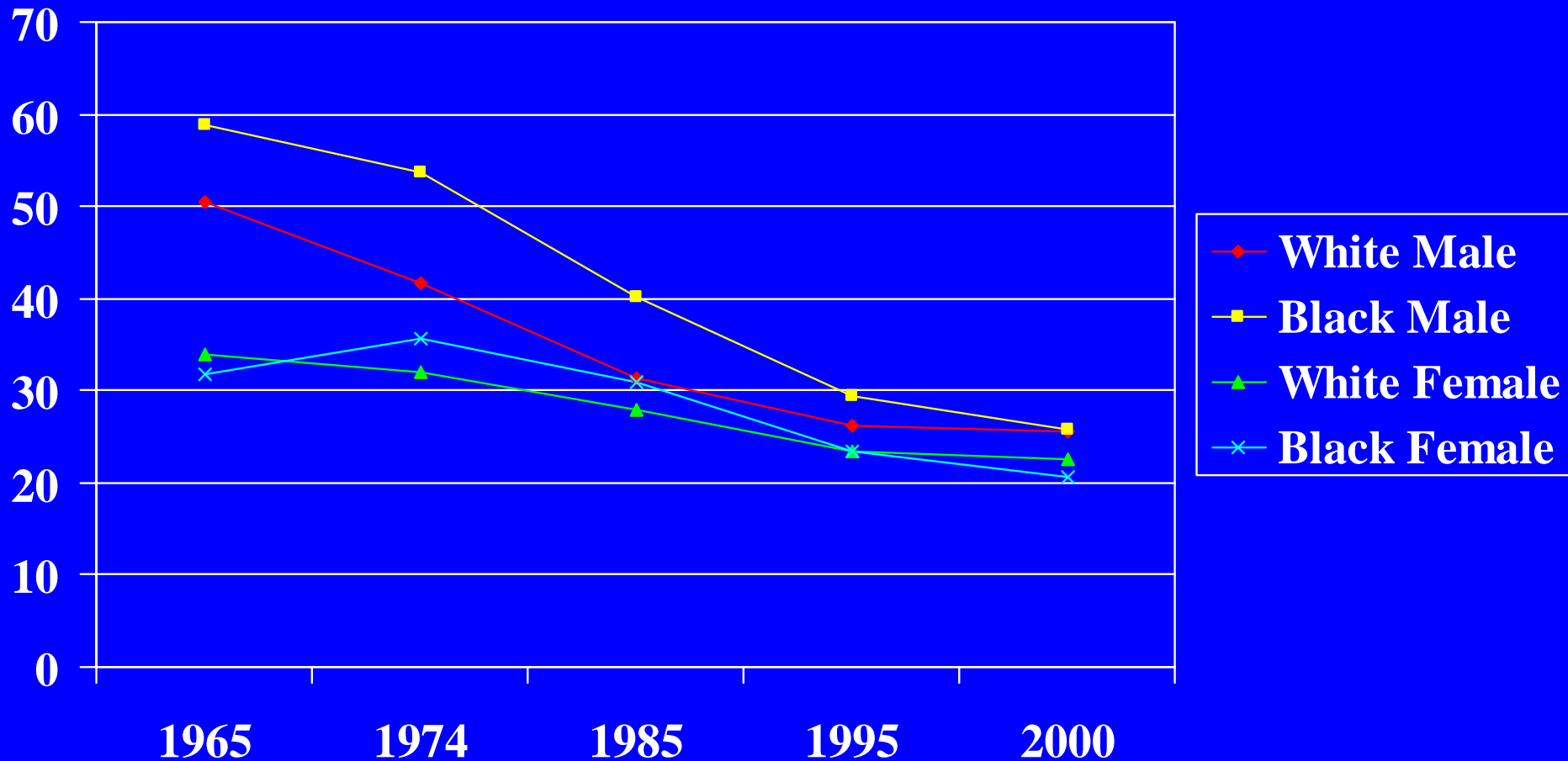


Lung Cancer Mortality Rates, Age-Adjusted, U.S.

Deaths/100,000



Smoking Prevalence, US, Persons \geq 18 Years Old, 1965-2000

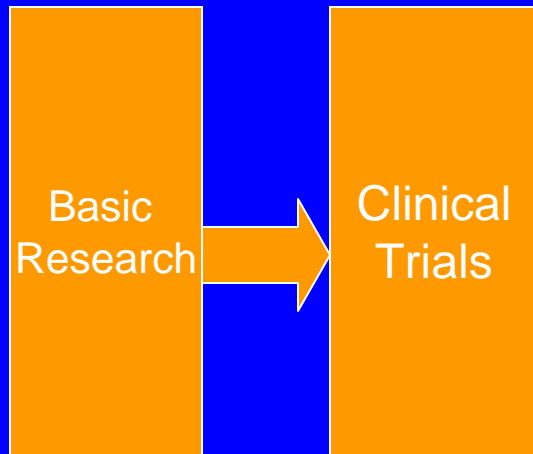


Translational Research

- “From the bench to the bedside”
- ...to the curbside
- ...to the countryside

Translational Research

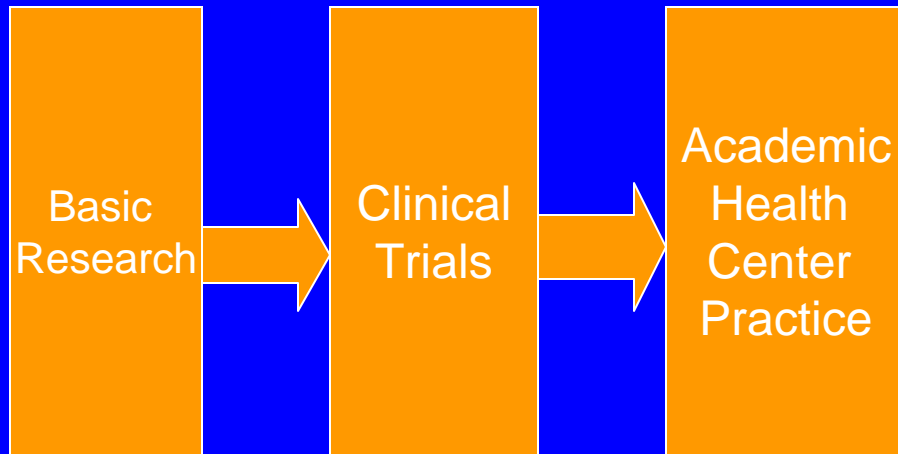
T1



Translational Research

T1

T2

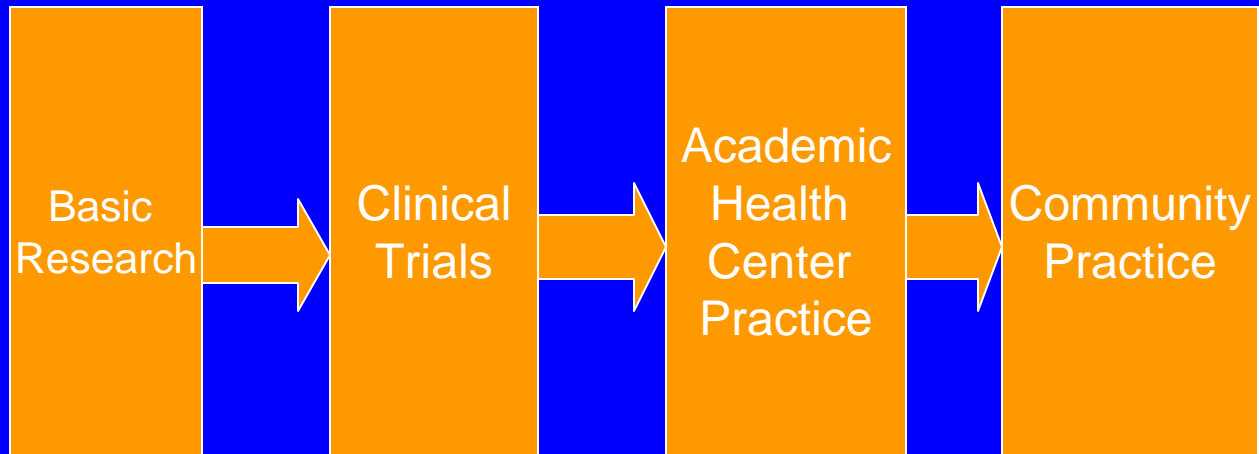


Translational Research

T1

T2

T3



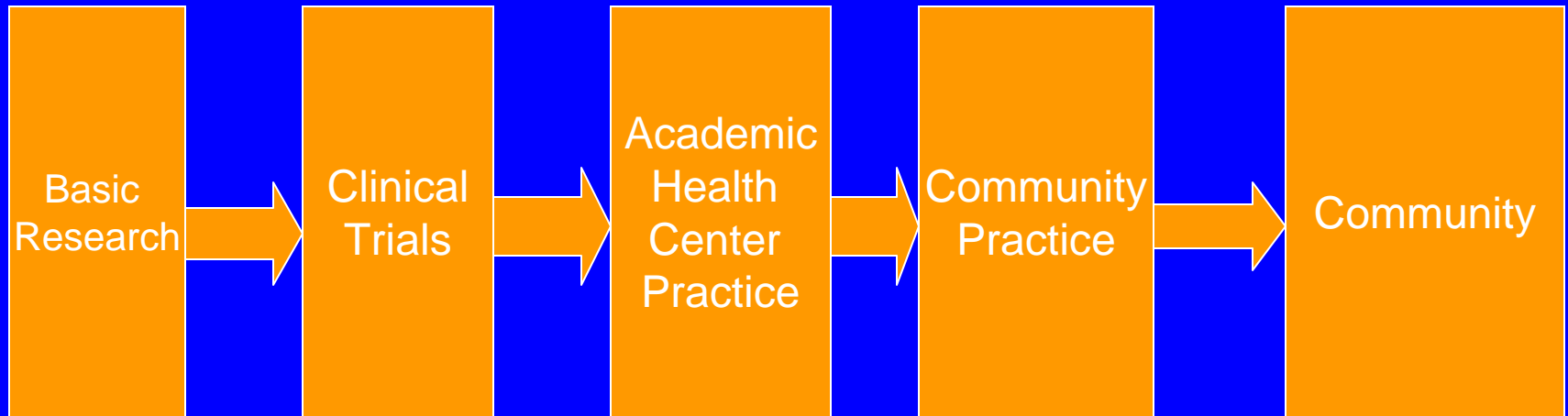
Translational Research

T1

T2

T3

T4



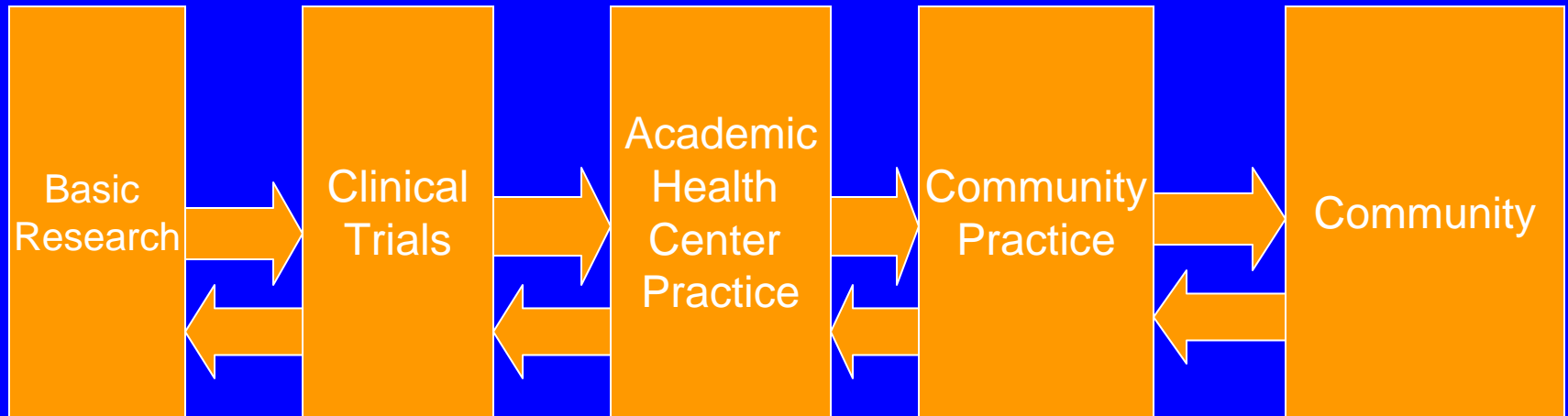
Translational Research

T1

T2

T3

T4



Community-Based Participatory Research

CBPR Growing in Popularity...

PubMed search on “Community-Based Participatory Research:”

- 1989- 1995: 12 citations
- 1996- 2000: 24
- 2001-2002: 55
- 2003-2004: 89
- 2005-2006: 170

T (to present): 449

...but has a long way to go

PubMed search on

- “Community-based Research:” T = 12,975
- “Clinical Research:” T = 55,535

From CBR to CBPR

- Largely an ethical issue →
- Tuskegee Study of Untreated Syphilis in the Negro male
 - A community-based research project
 - Violated ethical principles:
 - Beneficence
 - Autonomy
 - Justice

From CBR to CBPR

- CBPR = Research done with the community, not “in” the community or “on” the community
- Community is a partner
- Community involved in all phases of research: selecting the problem, designing the study, carrying out the project, analyzing the data, disseminating the results

Advantages of Community-based *Participatory* Research

1. Don't exploit the community
2. A vehicle for community organization and community development
3. Better research
4. Better research translation

Who represents the community?

Morehouse School of Medicine Prevention Research Center

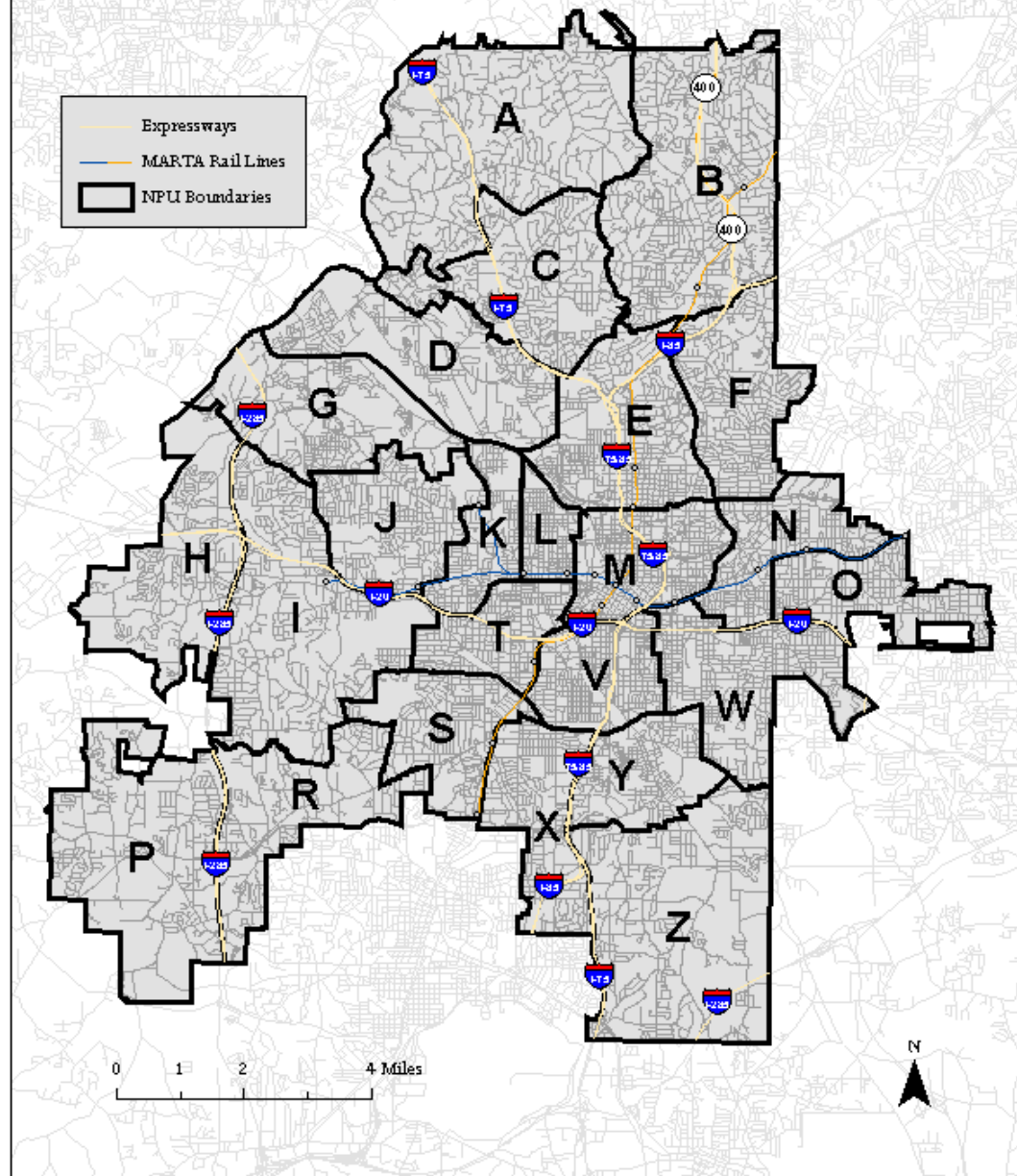
Community Coalition Board

Morehouse School
of Medicine

Prevention
Research
Center

Partnership with
NPU-Y

Neighborhood Planning Units of Atlanta



NPU-Y

- Includes 9 neighborhoods
- Population about 25,000
- Over 90% African-American
- Increasing Hispanic and SE Asian immigrants.
- Over 30% of residents below the poverty level
- Approximately 35% of adults lack a HS diploma.
- Leading health problems (per community):
 - alcohol and drug abuse
 - teen pregnancy
 - STDs
 - crime and violence
 - environmental pollution

NPU-Y Neighborhoods

Amal Heights

Betmar LaVilla

Chosewood Park

Englewood Manor

High Point

Joyland

Lakewood Heights

South Atlanta

The Villages at Carver

NPU-Y Neighborhood Organizations

- Betmar Lavilla Neighborhood Association
- Chosewood Park Neighborhood Association
- Englewood Manor Tenants Association
- Joyland-Highpoint Community Coalition
- Lakewood Heights Redevelopment Corporation
- Lakewood Heights Community Civic Association
- South Atlanta Civic League
- South Atlanta Redevelopment Corporation
- Thomasville Heights Community Coalition

Agency Partners

- Atlanta Public Schools
- Atlanta Housing Authority
- Fulton Co Dept of Health & Wellness
- GA Division of Public Health
- Atlanta Area Health Education Center (AHEC)
- Southside Medical Center (CHC)

Academic Partners

- Georgia State University – Institute of Public Health
- Emory University -- Jane Fonda Center

Community Coalition Board

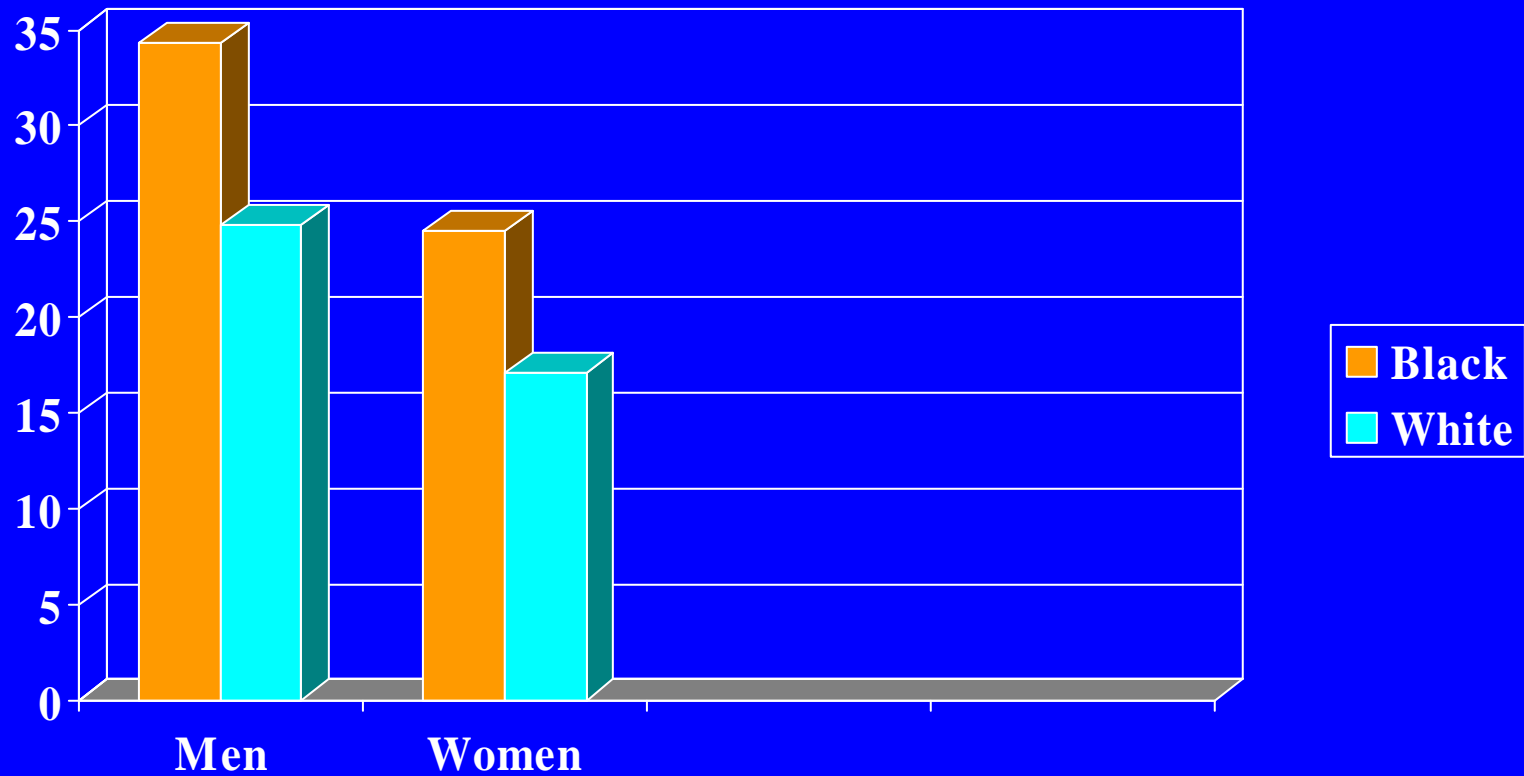
- All partners represented
- Neighborhood representatives always in the majority
- Chairman is always a neighborhood representative

Role of Community Coalition Board

- Sets policy (not “advisory”)
- Establishes research agenda
- Identifies community values
- Reviews projects/protocols
- Facilitates researchers’ access to the community

Colorectal Cancer Mortality

Deaths/100,000



Colorectal Cancer Screening – FOBT past 2 years; Scope ever

Source: BRFSS, CDC



Colorectal Cancer Screening Intervention Trial

Groups

- Control
 - NCI Pamphlet
 - Resource Directory
- Financial Support
 - NCI Pamphlet
 - Resource Directory
 - ≤ \$500 Reimbursement
- Small Group Educ.
 - NCI Pamphlet
 - Resource Directory
 - 4 Interactive Group Sessions
- 1-on-1 Education
 - NCI Pamphlet
 - Resource Directory
 - 3 Individual Counseling Sessions



Follow-up at 6 months

Groups	# Contacted	# Screened for Colon Ca	% Screened	Intervention vs Control (p-value)
Control	63	11	17.5	
Financial	63	14	22.2	ns
One-on-One	68	17	25.0	ns
Small	65	22	33.9	.0341
Total	259	64	24.7	

Conclusions

- Small-group education improves screening rates
- The other interventions might improve screening rates
- Even in the small-group education cohort, only a third of participants were screened – a better intervention is still needed

- “Research is good, but what do you do with the research after you get it?”

- Ella Heard Trammell

Chair, Morehouse School of Medicine
Prevention Research Center
Community Coalition Board