



U.S. Department of the Interior
Geological Survey

Northern Rocky Mountain Science Center



2008 Annual Report (with Administrative Overview)

TABLE of CONTENTS

- I. Northern Rocky Mountain Science Center**
 - a. About the Northern Rocky Mountain Science Center (NOROCK)**
 - b. History and Overview**
 - c. Organizational Chart**
 - d. Administrative Overview**

- II. NOROCK Research & Science Emphasis**
 - a. USGS Biological Science Programs**
 - b. NOROCK Research Emphasis**
 - c. Selected 2008 Projects**
 - d. New Projects**

- III. NOROCK Technical Assistance Activities**
 - a. Advisory and Consultation**
 - b. Reviews**
 - c. Graduate Advisory**

- IV. NOROCK Awards and Recognition**

- V. NOROCK in the National Spotlight**
 - a. USGS Science Picks**
 - b. USGS News Releases**
 - c. Newspaper**
 - d. Magazines**
 - e. Television**
 - f. Radio and Podcasts**
 - g. Web**

- VI. Appendix A – Technical Publications and Presentations**



Northern Rocky Mountain Science Center
U.S. Department of the Interior
Geological Survey



The following document is an overview and summary of the science and research conducted at the Northern Rocky Mountain Science Center (NOROCK). We hope you'll find the information useful and if you would like to have reprints or copies of the publications listed, please feel free to contact us for more information or visit our website at: <http://www.nrmsc.usgs.gov/>.

Jeff Kershner, Center Director

About the Center - The Northern Rocky Mountain Science Center (NOROCK) is part of the North Central Area of the Central Region of the USGS. Scientists from the Center work in the northern Rocky Mountains of the United States and throughout the western U.S. Many of our scientists work throughout the world on issues as diverse as global climate change, aquatic ecology, wildlife diseases, bison ecology, and large carnivores. Researchers work with partners from the Department of the Interior including the Bureau of Land Management, Bureau of Reclamation, National Park Service, and the U.S. Fish and Wildlife Service. Researchers also work in collaboration with state resource agencies throughout the United States and other federal agencies such as the U.S. Forest Service. We are hosted by Montana State University which jointly co-sponsors the Mountain Prairie Information Network as part of the National Biological Information Infrastructure

Mission – The mission of NOROCK is to produce and disseminate scientific information needed to manage and restore the ecosystems and associated plant and animal communities of the Northern Rockies.

Vision – The Center will generate and communicate unbiased, scientifically sound information needed to address issues of critical importance to natural resource managers of the region. The Center will be recognized for its ability to anticipate and address key issues effectively through research and information transfer, and for its collaborative approach to problem solving. Whenever feasible, the Center will continue to pursue integrated, interdisciplinary science within the USGS, with universities, other agencies, and non-governmental organizations.

History and Overview

Brief History

The Northern Rocky Mountain Science Center (NOROCK) is one of 18 biological science and information technology centers within the USGS. The Center was formed in January 2000 by the U.S. Geological Survey to conduct integrated, interdisciplinary research in support of natural resource management in the Northern Rocky Mountains. Researchers are based at Bozeman, Montana with field stations at West Glacier and Missoula, Montana and Jackson, Wyoming. Researchers work in collaboration with Federal, state, and International agencies, Native American tribes, academic institutions, and organizations to produce and disseminate scientific information needed to support natural resource management decisions.

Current Staffing

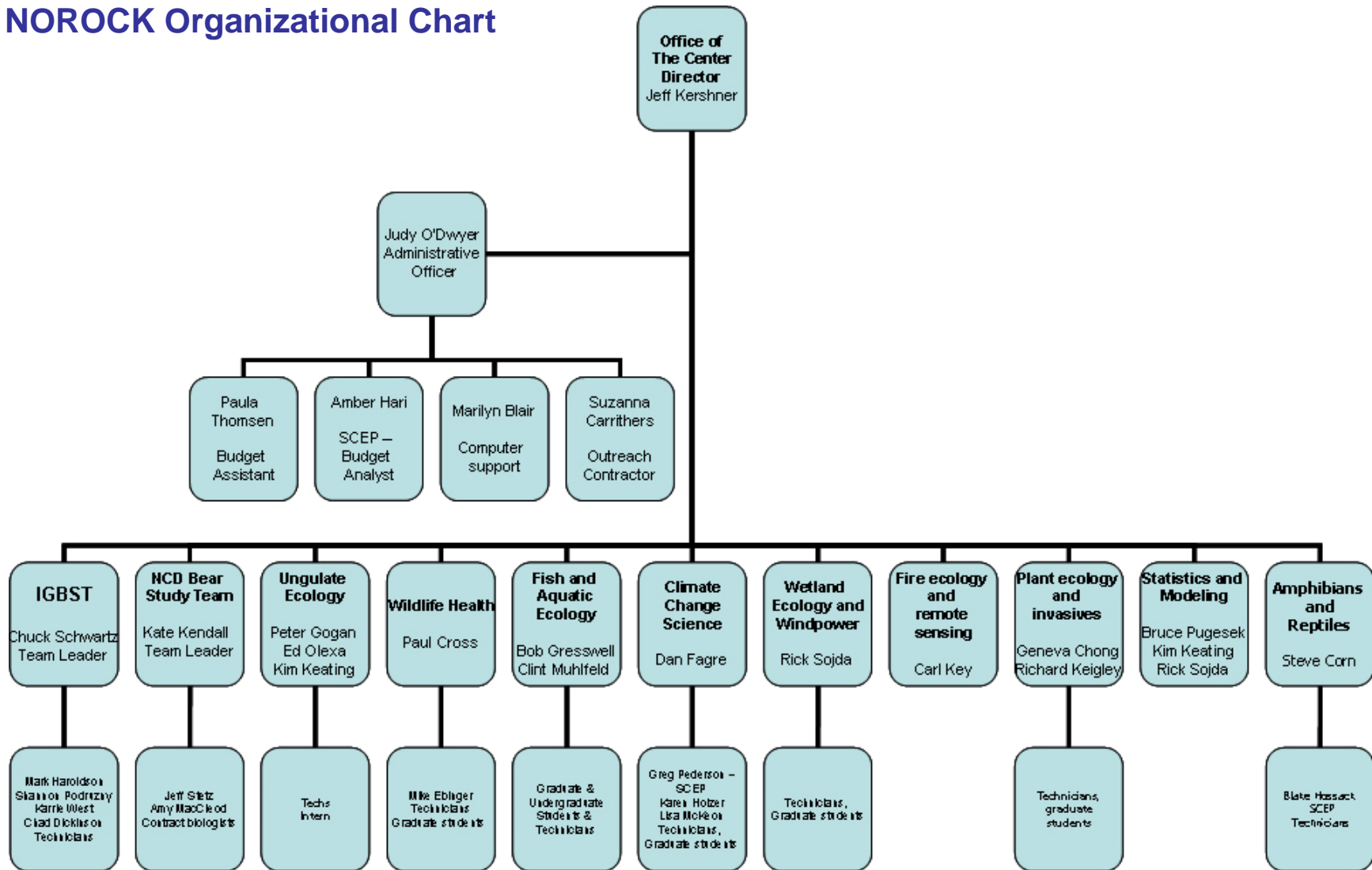
- 35 Federal Staff
- 16 Research scientists
 - Ecologists, zoologists, wildlife biologists, aquatic biologists, statisticians, plant ecologists, and geographers
 - 2 SCEP doctoral students
- Science support
 - Biologists, biology and hydrology technicians, administration
 - 1 SCEP graduate student
- Others
 - Contract employees, university cooperators, post-doctoral associates

Partners

Major partners include Montana State University, USGS Montana Water Center, USGS Montana Cooperative Fisheries Research Unit, the National Park Service, the U.S. Fish and Wildlife Service, the Bureau of Land Management, the U.S. Forest Service, the University of Montana, Montana Department of Fish, Wildlife and Parks, Wyoming Game and Fish Department, and Idaho Department of Game and Fish. Researchers also collaborate with numerous partners through the Interagency Grizzly Bear Committee, Greater Yellowstone Coordinating Committee, Greater Yellowstone Interagency Brucellosis Committee, Rocky Mountain Cooperative Ecosystem Studies Unit, Northern Yellowstone Cooperative Wildlife Working Group, Pacific Flyway Council, Montana Wetland Council, Big Sky Institute, and other joint ventures. Our role in all of these activities is to provide objective scientific information that can be used by others in making natural resource management decisions.



NOROCK Organizational Chart



Administrative Overview

Management: Strategic management of human capital

Recruitment – federal, non-federal, volunteers - The Center had a busy recruitment year which included successful recruitment for the Interagency Grizzly Bear Study Team, Global Climate Change, ARMI, Wildlife Disease, Greater Yellowstone Ecosystem, Fire Thrust, Prairie Potholes, Wetlands, Fisheries, and Invasives projects. There was also recruitment for the Administrative Office. The recruitment efforts included one NAGT appointment, one SCEP appointment, eleven STEP appointments (which includes one Native American student), fifteen temporary appointments, one TERM appointment, one student contractor, one CASU contractor, one contractor through a purchase order, one Italian volunteer, three Canadian volunteers and eighty six U.S. volunteers. The Center also obtained non-federal assistance via several university cooperative agreements.

Career development training – The Administrative Officer served on a two week detail at the USGS EROS Center in Sioux Falls, South Dakota. The Administrative Officer also attended a National Administrative Officer's Workshop in San Diego, California and a Leadership 101 course in Shepherdstown, West Virginia. The Center Director attended an All-Director's meeting in Reston, Virginia.

Partnerships with universities, other groups – The ARMI program established new working relationships with Virginia Commonwealth University and Idaho State University. The Fisheries program established a new working relationship with Watershed Consulting LLC. The Ungulate program established a new working relationship with U.S. Forest Service, Wildlife Genetics Laboratory.

SCEPs – The Center hired two SCEP student to work on the fisheries program and on the ARMI program. The Center also employed student contractors for field and office work and signed up one Work-Study student through Montana State University.

Training

- **Technical** – Training for Center personnel included Credit Card Training, IT Security Training, Orientation to the Privacy Act Training, Records Management Training, Defensive Driving Training, and Aviation Safety Training. The Administrative Operations Assistant took Section 508 Training.
- **HR** – No training to report.

Awards

- **Center** – NOROCK presented STAR awards to Sara Gregory and Clint Muhlfeld. Performance-Based awards for exceptional service were presented to Dan Fagre, Mark Haroldson, Jeff Kershner, Judy O'Dwyer, Chuck Schwartz and Karrie West.
- **USGS** – No awards to report.
- **External**
 - **Technical Writing:** Rick Sojda received an award for the best decision support paper (2007) from the journal, *Environmental Modeling and Software*.
 - **Bear Research:** Mark Haroldson, Katherine Kendall, and Chuck Schwartz were awarded the *Scientific Leadership Award* by the Interagency Grizzly Bear Committee (IGBC)

Promotions – 9 factor and 4 factor

No promotions to report.

Flexiplace, Maxiflex

A flexiplace agreement is in place for Richard Keigley. Several other Center staff have weather conditional flexiplace agreements in place. Everyone on the Center staff participates in the Maxiflex schedule option.

Staffing

- **Allocation for FY 2008** – The Center's allocation for FY 2008 was 34 FTE.
- **Usage – permanent, temporary, contract** – The Center's total FTE usage for 2008 was 22.37 for permanent employees, 1.26 for term appointments, 0.23 for a NAGT appointment, 3.00 for STEP appointments, 2.07 for SCEP appointments and 7.44 for temporary appointments, for a total of 36.37. During the year, the Center engaged 17 individuals as contractors in support of its mission.

Citizen-centered E-government

Information technology accomplishments

- All NOROCK computer systems receive all critical patches within 48 hours of release by USGS WSUS team.
- All new computer systems (9 desktops, 6 laptops, 1 Blackberry) were setup following the DOI Security Template Installation Guidelines (STIG).
- All NOROCK computer systems receive current Antivirus definitions
- NOROCK computer users are provided with a secure email system as needed.
- All USGS WAN connections were migrated to DOI ESN.

IT Security accomplishments

- All NOROCK registered users of DOI IT systems completed annual IT security awareness training. This includes not only Federal employees, but also Emeriti, contractors and volunteers.
- Daily AntiVirus scans were run on all NOROCK systems
- 3 minor computer systems infected were disconnected from the network and cleaned before allowing reconnection.

Information Management

- NOROCK developed a local policy for creating/tracking information in the USGS Fundamental Science Practices system
- NOROCK developed/revised IT policies for creating/updating/deleting users of IT systems.

E-government and information technology accomplishments

- NOROCK launched a new website for Professional staff and their research projects.

Improved financial management

Center budget status

- Reimbursable, base, cyclical funding – NOROCK base dollars slightly increased over 2007, with cyclical dollars experiencing moderate growth. Reimbursable funding, by far, represented the largest funding growth overall for the Center in 2008.

Type of funds	Amount	Percent of Total
Base	\$2.5 M	50
Cyclical	\$1.9M	38
Reimbursable	\$0.6M	12
Total	\$5.0M	100

- **Carryover** -- The Center was within the carryover target for biology funding, but we did go exceed the carryover target for Global Change Funding, Land Remote Sensing, and Invasive Species. However, this was driven by the time frame we received this funding, which was well into the fourth quarter, as well as the fact that contractual deadlines had passed for processing in cooperative agreements and contracts. The Center submitted the Repeal Request Forms for these funding sources.
- **New funding initiatives** – \$257,000 was received in Global Change funding for fisheries research and for wildlife research. The WLCI Healthy Land Initiative funded \$117,000 for work on habitat treatment in Wyoming, and the Bureau of Land Management, Cheyenne Office funded \$25,000 for the collection of hydrologic data. ARMI funding was received for work on sublethal fire effects in the amount of \$25,625. POBS awarded \$22,500 for amphibian monitoring work as well as \$37,735 for research related to Santa Rosa Island deer and elk population. Additionally, POBS sent \$43,500 to monitor black bear population in Glacier National Park. The Office of the Regional Geologist funded \$15,000 for work on fire science thrust, while \$25,000 was received from the Quick Response Program for work on Arctic Graying. The NRPP program funded \$35,245 for work on monitoring bear population. The National Park Service provided \$98,077 for work on fisheries databases, and Montana Fish, Wildlife and Parks funded work for instream flow of Salmonids for \$40,354. The National BLM office sent \$30,000 for aquatic indicator research, the National Park Service provided \$20,000 for collaring elk at the Fossil Butte National Monument in Wyoming, and \$35,000 was provided in Land Remote Sensing dollars for work on Montana Prairie Potholes project in northeastern Montana.

Budget-performance integration

Annual allocations of appropriated base funds for operating expenses (OE) were guided by performance, with the objective of optimizing the Center’s ability to produce science of the highest quality and meeting the highest priorities of its clients. Productivity of projects and tasks was reviewed early in FY 2008 and OE funding was adjusted accordingly, with any major adjustments being coordinated through the Regional Office with the Program Coordinators for Wildlife and Ecosystems.

Science Programs

NOROCK is located in the North Central Area of the Central Region of the U.S. Geological Survey (USGS). Science accomplishments of NOROCK are based on government goals specific to protection and conservation of natural resources and fall under specific programs. Below are the USGS biological science programs, other national programs, regional science thrusts and corresponding NOROCK projects.

ECOSYSTEMS

- Monitoring and ecological modeling of species and habitats with special emphasis on DOI lands in the Northern Rocky Mountains
- Climate Change in Mountain Ecosystems
- Understanding the effects of flow regulation on the Snake River Ecosystem below Jackson Lake: Using Science in an Adaptive Management Framework
- The use of radar to map bird migrations and migration corridors – with specific emphasis on potential wind farm development.
- Post-fire burn assessment by remote sensing on National Park Service lands
- Geologic studies of the Greater Yellowstone Ecosystem

INVASIVE SPECIES

- Anthropogenic encouragement of non-native species: impacts of fuel treatments and post-fire rehabilitation activities
- Monitoring and ecological modeling of species and habitats with special emphasis on DOI lands
- Wyoming Landscape Conservation Initiative

FISHERIES: AQUATIC & ENDANGERED RESOURCES

- Species, population, and habitat assessments for native salmonids in the Northern Rocky Mountains.

NATIONAL GEOSPATIAL PROGRAM

- Building the National Spatial Data Infrastructure

WILDLIFE: TERRESTRIAL & ENDANGERED RESOURCES

- Assessing the distribution and effects of disease on amphibians in the Northern Rocky Mountains.
- Conservation requirements for wild ungulates of the Northern Rocky Mountains
- Science to support management of wildlife diseases in the Rocky Mountains and Africa Plains.
- Modeling disease dynamics in structured populations
- Assessing the condition and trend of browse communities
- Effect of browsing following wildfire.
- Conservation requirements for wildlife of the Northern Rocky Mountains: The Interagency Grizzly Bear Study Team
- Conservation requirements for wildlife of the Northern Rocky Mountains: The Northern Continental Divide Grizzly Bear Project
- Sage grouse habitat relationships, Jackson, Wyoming

CLIMATE CHANGE PROGRAM

- Potential impacts of climate change on ungulate species in the Northern Rocky Mountains.
- Potential impact of climate change on native salmonids

CENTRAL REGION INTEGRATED SCIENCE PROGRAM

- Integrated science to understand lake and wetland ecosystems of the Northern Rocky Mountains

NOROCK Research Emphases

The Conservation of Amphibians, Fish, and Wildlife of the Northern Rocky Mountains

The Northern Rockies are blessed with an abundance of plant and animal species which have remained relatively intact since the Lewis and Clark expedition in the early 19th century. Large, charismatic species such as wolves and grizzly bears still inhabit many areas and free roaming ungulates are still very much part of the landscape. Native amphibians, fish and reptiles are still present in their historic ranges for the most part, but challenges to the conservation of these species are numerous. Energy development, increasing human population pressures, and the continued demand for more water make the management of wildlife more complicated than ever. Scientists at NOROCK work with partners to study key life history and habitat needs of these species. We develop analytic tools that help managers with decision support to evaluate the tradeoffs of various management options.

The Changing Landscape of the Northern Rocky Mountains

Unprecedented population growth, the re-emergence of the energy industry, and the increasing demand for water and natural resources is changing the landscape of the Rockies. Couple that with global climate change, and managers face unprecedented challenges in the management of natural resources. Center scientists are working on research projects that will provide managers with information related to the effects of climate change on glaciers and ecosystems, the consequences of flow regulation on aquatic and riparian resources, and the influence of geology and hydrology on the dynamics of wetland ecosystems. We study the effects of invasive species on terrestrial and aquatic systems, and track the effects of large-scale energy development on the sagebrush ecosystems of the northern Rockies. The changing dynamics of wildfire in the northern Rockies are also a concern of natural resource managers.

Modeling Complex Systems and Decision Support - An Emerging Need

Wildlife species assessments synthesize data from many sources that may use different methods, have different data, and often encompass multiple time periods. Tools are needed to integrate this information to determine the ecological effects of land management on both public and private lands. The increasing pressure of land development on private lands, expanding energy production, and continued commodity extraction on world class wildlife resources requires more complicated analyses to identify potential consequences and trade-offs of management alternatives. We are developing models that use this information to display the effects of management alternatives on the resource goals identified by managers and the public. Decision support systems are relatively new techniques to use information from research studies to develop models that display the consequences of various management alternatives. Model inputs can be adjusted to fit management goals or environmental conditions to display the effects on the system so that managers can weigh tradeoffs of different management options.

The Conservation of Amphibians, Fish, and Wildlife of the Northern Rocky Mountains - Highlights



AMPHIBIANS

Assessing the distribution and effects of chytrid fungus on amphibians in Grand Teton National Park. The objectives of NOROCK researchers and their partners were to determine the effects of the amphibian chytrid fungus, *Batrachochytrium dendrobatidis* (Bd), on the health and survival of boreal toads and map the distribution of the chytrid fungus prevalence of chytridiomycosis in Grand Teton National Park. Bd infects the frog's skin and may cause problems in respiration or other effects, and is suspected as a leading cause of global amphibian declines. The pathogen Bd was present in breeding adult boreal toads at all 10 sites sampled, with a mean prevalence of 67%. Additional experiments also suggest that although widely infected in nature, Wyoming boreal toads may escape chytridiomycosis due to a slight advantage in innate resistance or because their native habitat hinders Bd growth or provides more opportunities to reduce pathogen loads behaviorally than in Colorado. Results of this study are in press in the journal *Ecohealth*.

BIG GAME SPECIES AND WILDLIFE DISEASES

Analysis of changing elk demographics and disease dynamics across the Greater Yellowstone Ecosystem. NOROCK scientists and their partners are examining elk demographic and disease dynamics in Wyoming, Idaho and Montana. This work spans three states; with almost 4000 disease tests over 20 years, and census data from 1946 onwards. So far the study team has showed that some elk populations far from both bison and feedgrounds now appear to be viable reservoirs of brucellosis, sustaining levels not previously seen in elk. The number of that elk tested positive for brucellosis in the study population, known as seroprevalence, increased over time in four of five Wyoming elk herd units for which there are sufficient data. These changes in brucellosis correspond with elk counts in each herd unit, with one exception. Model simulations suggest that these seroprevalence levels cannot be sustained only by dispersal of elk from the supplemental feedgrounds where seroprevalence is high (~33%). Limited disease data existed for Montana, but some of Montana's elk populations were five to nine times larger in 2007 than in the 1970's and are comparable to the Wyoming populations with higher levels of brucellosis. In addition, by 2007 some Montana elk experienced group sizes similar to the supplemental feedgrounds in Wyoming.



NOROCK big game research is not limited to the Northern Rocky Mountain region. Two projects in Kruger National Park, South Africa, are studying 1) The effects of bovine tuberculosis (BTB) on the African buffalo population and 2) sexual segregation in African buffalo. Partners in this study include University of Pretoria, Kruger National Park, Agricultural Research Council, and USGS National Wildlife Health Center.

Modeling species occurrence in space and time. Widely used to describe an animal's relative frequency of occurrence in 2-dimensional space, utilization distributions (UDs) have been a cornerstone of home range studies for over 30 years. Extending the UD concept to include frequency of occurrence in space and time, NOROCK scientists have devised a new modeling method to give resource managers better information about patterns of occurrence and how those patterns change over time. The increased information made possible by this method is illustrated through computer simulations, and in an example model showing seasonal changes in the expected UD for bighorn sheep (*Ovis canadensis*) in Glacier National Park, Montana. A paper describing this work is expected in *Ecology* in 2009, together with videos showing the kinds of time-dependent models made possible by this method.

GREATER YELLOWSTONE ECOSYSTEM BEAR STUDIES.

The Interagency Grizzly Bear Study Team (IGBST) is an interdisciplinary group of scientists and biologists responsible for long-term monitoring and research efforts on grizzly bears in the Greater Yellowstone Ecosystem (GYE). Information gathered and analyzed annually by the IGBST is used to assess population trend and help focus management activities toward issues that impact bears.

In 2008, counts of unique females with cubs of the year (FCOY) include the following: 1) minimum number of unique females with cubs of the year (FCOY) identified during 2008 was 44; 2) excluding the families identified only via telemetry, the estimate for total number of FCOY was 56; 3) model-averaged estimate for FCOY indicates a continuing positive trend for this segment of the population; and 4) population estimate derived from the model-averaged FCOY was 596 grizzly bears.

NORTHERN CONTINENTAL DIVIDE ECOSYSTEM BEAR STUDIES

The Northern Continental Divide Ecosystem (NCDE) in northwest Montana is one of the last strongholds of the grizzly bear in the lower 48 states. However, little information exists about the bears in this region and as agencies strive to recover the threatened grizzly bear, it is clear that there is a need to assess the grizzly bear population in the NCDE. In 2008 NOROCK's Northern Divide Grizzly Bear Project (NDGBP) completed a study that provides a better understanding of the population size, distribution, and genetic health of grizzly bears in northwest Montana.

Noninvasive DNA studies to determine grizzly bear populations. This study is the largest non-invasive study of bears to date and is the first ever ecosystem-wide scientific assessment of grizzlies in the 12,187-square-mile Northern Continental Divide area. During the 2004 summer field season, 4,795 bear rubs and 2,558 hair traps were used to collect hair. Approximately 13,000 samples were collected from bear rubs and 21,000 were collected from hair traps, providing researchers with a total of 34,000 bear hair samples. NOROCK scientists then used statistical models to calculate the number of bears not sampled and incorporate them



IGBST documented 41 known and probable mortalities in the ecosystem as of October 2008. Total reported plus estimated unreported bear mortalities were within sustainable levels for independent aged (≥ 2 years) females, but was exceeded for males. Human-caused mortalities of dependent young (< 2 years) was $< 15\%$ of their estimated numbers.

IGBST also monitors and collects key food data throughout the ecosystem. 2008 surveys include: 1) spring carcass surveys on Yellowstone National Park ungulate winter ranges averaged 0.43 carcasses/km; 2) whitebark pine cone production transects average 8.2 cones/tree; 3) levels of tree mortality on transect trees alive in 2002 is 56.8%, and 94.7% of transects contain beetle killed trees; 4) researchers observed 297 grizzly bears on 26 (51%) of the 51 confirmed and possible moth aggregation sites.

into an estimate of the total population size, leading to a complete population estimate of 765 grizzly bears making their home in the NCDE.

The Remote Camera Project is a secondary output of the NDGBP project which used remote video and still cameras that captured numerous wildlife species throughout the NCDE. These video and still shots were used to investigate: how grizzly bears, black bears, and other wildlife species respond to baited, barbed wire hair traps; bear use of naturally-occurring bear rubs, bear marking behavior, and effects of putting barbed wire on bear rubs to facilitate hair collection; and how hair traps may be modified to improve detection probabilities. Not only has the remote camera footage been invaluable to researchers, it has also peaked the interest of the general public. Remote camera footage has been posted on NOROCK's website enabling web viewers to see various wildlife species in their natural habitat that may otherwise never be seen by humans.



NATIVE FISHES OF THE NORTHERN ROCKIES

Abiotic and biotic factors structuring the spawning and seasonal distribution patterns of Finespotted Cutthroat Trout in the Snake River, Grand Teton National Park, WY. The finespotted Snake River cutthroat trout is generally perceived as a morphologically divergent ecotype of the more broadly distributed Yellowstone cutthroat trout. Although there is a popular sport fishery focused on this native trout, spawning and distribution patterns in the historical range are poorly understood. Consequently, it is difficult to predict how future disturbances (e.g., climate change or an increase in the prevalence of nonnative species) may affect behavior or persistence. To identify spawning patterns, 49 radio telemetry tags were implanted in cutthroat trout during September and October, 2007, and fish were tracked weekly from May, 2008 through the spawning season. Significant temporal and spatial variability in spawning behavior was expressed by the 22 fish that made distinct spawning migrations. Spawning was observed in the mainstem and side channels of the Snake River, several tributaries, and three major spring creek complexes. Although the majority of this spawning activity occurred within 40 km of the fish's capture location, three fish migrated to spawning areas 75-100 river kilometers away. In September and October, 2008, an additional 199 cutthroat trout were implanted with radio telemetry tags. These fish will be relocated every two months in the winter until May, when weekly tracking resumes through the spawning season. Ultimately, understanding the behavioral variability of finespotted cutthroat trout, the physical and biological variables that influence distribution patterns, and the habitat connectivity required to complete the life cycle, will provide new insights into the management of this portion of the Snake River.

NOROCK fisheries research is not limited to the Northern Rocky Mountain region. Two projects in the Columbia Basin are studying 1) how landscape feature influence diversity in Oregon cutthroat trout and 2) evaluating the management objectives used to assess stream habitat conditions on federal lands within the Interior Columbia Basin.

The Changing Landscape of the Northern Rocky Mountains



MOUNTAIN ECOSYSTEMS

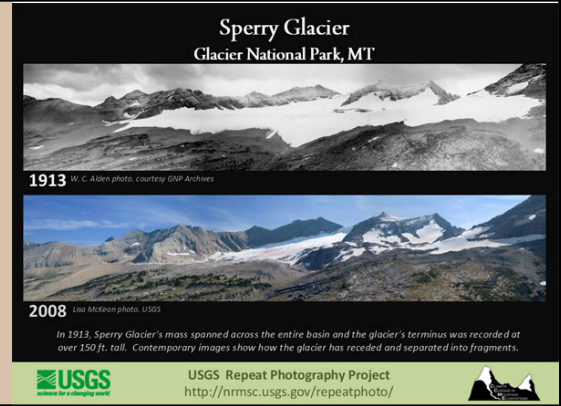
Declining snowpack in west. Snow shapes the landscapes and economies of the western United States and the decline in snow pack, and resulting ecological implications, are still not fully understood by researchers. To address this, NOROCK and their collaborators use tree-rings to reconstruct snowpack over several centuries for three key high-mountain areas: the Upper Colorado River Basin, Upper Yellowstone/Missouri River Basin, and the Columbia and Saskatchewan River Headwaters. The resulting high-resolution maps of past snowpack will be used to understand how ocean sea surface temperatures (e.g., El Niño, Pacific Decadal Oscillation) influence snowpack in the west. This question is particularly important in sorting out the degree to which current trends are 'natural' vs. resulting from human-caused changes in climate. This project will also develop tools for water managers to assess how variability in snowpack affects resource management. The work is particularly relevant as the three target ranges form the headwaters for the west's three most important watersheds, the Colorado, the Yellowstone/Missouri and the Columbia. In order to calibrate tree-ring data to snowpack data, researchers have assembled large spatial databases using existing tree-ring chronologies and records of April 1st snow water equivalent (SWE) in the headwaters of our three target watersheds. Preliminary results indicate that the tree-ring reconstructions faithfully capture the decade-scale variability in 20th century snowpack.

Climate Change in Mountain Ecosystems.

NOROCK's Climate Change in Mountain ecosystems program (CCME) has been monitoring, conducting research, and modeling ecosystem responses to climatic variability since 1991, first at Glacier National Park but eventually throughout the western U.S. in collaboration with other scientists. Coordination with scientists around the world has led to mountain research networks to expand our understanding of how mountain ecosystems respond to climate change.

The Repeat Photography Project. Since 1997 over seventy photographs of nineteen different glaciers have been repeated. Thirteen of those glaciers have shown marked recession and some of the more intensely studied glaciers have proved to be just 1/3 of their estimated maximum size that occurred at the end of the Little Ice Age (circa 1850). In fact, only 26 named glaciers presently exist of the 150 glaciers present in 1850 and those that do are mere remnants of their previous size. Repeat photography has become an important tool for documenting and analyzing the retreat of glaciers and the images have garnered much interest from the media, academia, and most recently from the art community. Incorporating repeat photographs and climate change research with art has become a new thrust for the Climate Change in Mountain Ecosystems (CCME) program in an effort to communicate research findings with new audiences. Recent art collaborations have included working with musicians, sculptors, poets, and a local art gallery to create an exhibit of repeat photographs.

Glacier mass balance studies on Sperry glacier, an index glacier in Glacier National Park, confirm that the glaciers will likely all be gone by 2030 as predicted by a model. Sperry is presently 0.841 km² - 22% of its mid nineteenth century estimated area of 3.87 km². It's diminished at 0.11 km² in the past decade at an annual rate of 0.013 km² (12700 m²/yr) or ~1.2% per year. Sperry shrank most dramatically in the early part of the century. The annual rate was 10-20x faster. It's declined since then, partly because it's pulled back in to the flatter, shaded cirque. At present rates of melting, Sperry will be gone in 22 years but the appearance of rock islands and collapse of ice from a cliff band during this past year will alter the albedo and likely accelerate melting.



FIRE SCIENCE

Effect of browsing following wildfire in the Missouri Breaks, Montana. The purpose of this study is to determine if browsing following two wildfires will prevent young plants from attaining their potential stature. One fire occurred in 2003, the other in 2006. It was determined that skunkbush will likely attain potential stature while chokecherry will not. Chokecherry is an important habitat component and by documenting its decline, this study may influence the setting of stocking rates, big game harvest levels, and the establishment of habitat. In addition, data indicate that weather conditions that occur during the late-Spring of the initial growing season may be an important determinant of the height to which plants ultimately grow.

This study also addressed the question of when certain browse evaluation techniques may be appropriate. A new method based on an analysis of growth rate was developed to assess potential growth of chokecherry during the early years following fire. Browsing level and LD Index data collected in 2008 corroborated the predictions based on 2007 growth rate data. It was determined that for the initial four years, an analysis of growth rate is the more appropriate method. After five years, browsing level and LD Index provide a better method of associating the effect of browsing on potential changes in structural diversity.

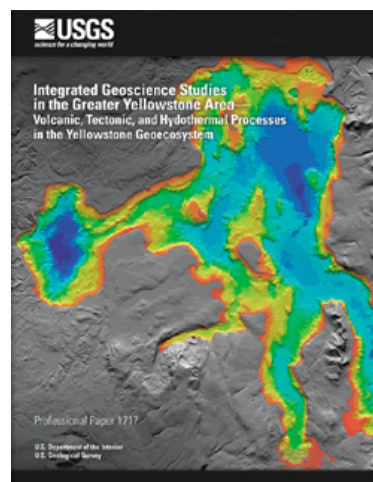
USGS-NPS Burn Severity Mapping. Remote sensing and field sampling techniques to support national assessment of burned areas was under development from the mid-1990's by collaborators at USGS and National Park Service. At the time, there was no standard approach to broadly quantify and spatially represent burn severity or the ecological effects of fire within the NPS. Researchers pursued a number of strategies to initiate a national program for burn severity mapping and monitoring within NPS and USGS. Current emphasis at NOROCK is to complete a publication on evaluation results across the U.S., to demonstrate useful applications of the extensive data holdings, and to derive new information on trends and the landscape ecology of fire.

Monitoring Trends in Burn Severity-MTBS. In June 2004, the Government Accountability Office (GAO) recommended that all federal land management agencies adopt the USGS-NPS burn severity mapping protocol as a monitoring mechanism to assess fire effects and broader wildland fire patterns and trends. Soon after, the Monitoring Trends in Burn Severity (MTBS) was established. The main goal of MTBS is to generate standard, comparable data to monitor fire trends and management effectiveness on a national level, in contrast to direct emergency response applications. Current products are based on Landsat imagery and the dNBR obtained

during the growing season after fire for an extended assessment on most burns. In addition, investigations that use the burn severity time-series in landscape and fire ecology are of interest, including relationships to climate, trends and modeling of fire behavior, and responses of vegetation and wildlife. Current MTBS outputs include instructional materials and guidance, training and assistance in field sampling, creation of a photo series of the burn severity continuum in key ecosystems of the U.S., and scientific or technical leadership and review of procedures and products.

GREATER YELLOWSTONE ECOSYSTEM – PRIORITY ECOSYSTEM SCIENCE

Glaciation of the Yellowstone area. In a recently published paper, NOROCK researchers and their partners discuss the chronology of Yellowstone glaciation. Penultimate glaciation, the next-to-last glacial period in Yellowstone, extended tens of kilometers beyond the last glaciation to the south, southwest, and west of Yellowstone and culminated about 140,000 years ago. During the last glaciation, glaciers flowed outward from Yellowstone and their culmination was older in the northeast and younger in the south: ~19,000 years ago in the northeast, ~16,500 years ago in the north, and 14,000 to 15,000 years ago in the south. This age progression may be explained by building of the Yellowstone glaciation progressively to the southwest in the direction of the moisture source for air masses funneled up the eastern Snake River Plain.



INVASIVE SPECIES AND VEGETATION CHANGE

Wyoming Landscape Conservation Initiative. The WLCI is a long-term science based effort to enhance aquatic and terrestrial habitats at a landscape scale in Southwest Wyoming, while facilitating responsible development. The USGS Science Planning Team is working with the multi-agency WLCI Coordination Team to design the science framework for long-term and effectiveness monitoring. Effectiveness monitoring activities conducted by NOROCK in 2008 were located in the Pinedale Anticline and the Rock Creek Allotment were researchers and interns selected and sampled vegetation. Products from this project include an MSAcess database and digital photos for each plot.

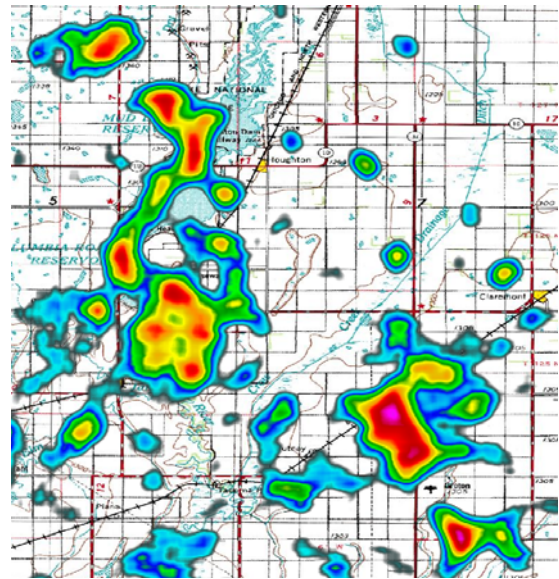
LAKE AND WETLAND ECOSYSTEMS

Wetland ecology and management. NOROCK's wetland ecology research has completed a final year of data collection at Red Rock Lakes NWR and researchers have begun some multivariate time series analysis of the hydrologic data in collaboration with statisticians at Montana State University. Researchers plan to apply these methods to similar data from prairie pothole wetlands, where they are now monitoring groundwater in almost 30 palustrine, seasonal basins. Because of close collaboration with biologists from the USDI-Fish and Wildlife Service, this project is morphing into one where scientists will apply knowledge of wetland ecology and groundwater movement to understanding the change in oil brine plumes from energy development in the Bakken Oil Field. Questions being posed by managers focus on the risk to wetlands on Waterfowl Production Areas from the potential sources of contamination.

Modeling Complex Systems and Decision Support - An Emerging Need



Radar ornithology. The tremendous growth in the wind energy industry has increased the value of NOROCK's work related to identifying birds in Doppler weather radar, also known as NEXRAD. Researchers have begun to develop field methods for surveying the three dimensional location of Canada geese and lesser snow geese at migration stopover sites like Horicon NWR (WI) and Freezout Lake Waterfowl Management Area (MT). This year, NOROCK researchers presented preliminary results at both international conferences and at national wind energy workshops. The work this year focused on developing partnerships with the National Renewable Energy Lab and Montana State University to use machine learning algorithms to successfully identify flocks of migrating birds. This work is in collaboration with the Upper Midwest Environmental Sciences Center and has begun to spawn additional research efforts to develop decision support systems for evaluating the effects of wind energy development on birds staging at migration stopovers.



Lesser snow geese (brighter colours) moving back to Sand Lake NWR as depicted on NEXRAD weather radar.

Modeling habitat-specific probability of occurrence for grizzly bears (*Ursus arctos*) in the Greater Yellowstone Ecosystem. Limiting human-caused mortalities is key to grizzly bear conservation in the GYE. To help manage mortalities, recent work at NOROCK has focused on developing a spatially explicit hazard model to better identify high-risk areas where mitigation measures might be most effective. Such a model requires two major components: one sub-model to predict probability of mortality at particular locations, and another to predict probability of use. Areas where the probabilities of mortality and use are both high would be prime candidates for mitigation measures. The first of these models was recently completed, providing spatially explicit estimates of probability of bear mortality based on relationships that show grizzly bear survival increases with secure habitat and elevation, but declines with road density, numbers of homes and site developments, and ungulate hunting activity. This study aims to model probability of occurrence of grizzly bears, thereby enabling construction of an overall hazard surface for Yellowstone grizzly bears.

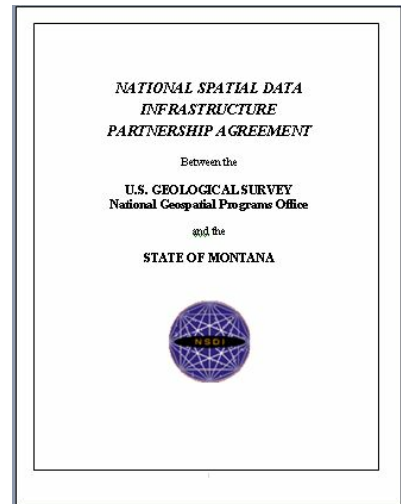
Predictive use of non-linear and structural equation modeling. NOROCK researchers use non-linear modeling in identifying years for which there exists an increased likelihood for climatic events that are severe enough to impact food production and disease pandemics. Results open

a new avenue for research regarding climate change and earth change events such as volcanism. Furthermore, research indicates years in which preparations for disease pandemics at the national and international level should be targeted. Structural equation modeling is used for modeling riparian data which will provide guidance to the National Park Service and Bureau of Reclamation for release of water at Jackson Lake Dam in a manner that is most conducive for managing the riparian ecosystem below the dam. NOROCK researchers also use structural equation modeling is also used for modeling BLM Bugs data proceeding which will provide example of scientific analysis of archived database. Results will provide initial steps aimed at developing a systems analysis for comparisons of managed and refernced habitats.

Relationship of crab abundance to Whooping Crane success. Tenth year of data collection provides additional data points on the relationship of crab abundance at the wintering area to Whooping Crane survival and reproductive success. Blue crab abundance is inversely related to Whooping Crane survival. Results of the study have been instrumental in the State of Texas' action to create a moratorium on commercial crabbing in the Aransas refuge area. Results may also play a role in the continuing debate and litigation concerning upstream uses of fresh water and its impact on the estuarine environment surrounding the Aransas Matagorda-Island National Wildlife Refuge.

National Geospatial Program

The U.S. Geological Survey (USGS) Geospatial Liaison to Montana is part of the National Geospatial Program Office (NGPO) supporting the geospatial community in Montana through the Northern Rocky Mountain Science Center located in Bozeman, Montana. The Geospatial Liaison works with partners to build the National Spatial Data Infrastructure (NSDI) through geospatial coordination, partnerships, leadership and guidance.



2008 Agreements:

University of Montana – National Center for Landscape Fire Analysis - GNIS Project. Correct inconsistencies in the GNIS to support MT Wildland Fire Base Map, establish GNIS as formal framework layer for MT, establish GNIS stewardship through State Names Advisor, define future needs for a state names database and stewardship of the GNIS

State of Montana – Department of Administrative Services - Structures Project. Research procedures and process to derive structures point data from state ownership parcel data. Produce structures data to support NSDI critical structures in Montana

State of Montana – Montana State Library, Natural Resource Information System – NHD Stewardship. Build, maintain, update, and improve the NHD in Montana under a long-term data stewardship program. Supports consistent / long term stewardship of the NHD

NGTOC – Support for the maintenance and stewardship of the National Wilderness Preservation Boundaries dataset. Support the maintenance of the National Wilderness Preservation Boundaries dataset as a national data resource.

New Projects in 2008

In 2008 NOROCK researchers were awarded approximately \$3.3 million in grant funding to support ongoing and emerging research in and around the Northern Rocky Mountains.

Implications of mining on native fish in the Transboundary Flathead. Research conducted by NOROCK and several partnering agencies demonstrates that the Transboundary Flathead Basin in Montana (USA) and British Columbia (Canada) is a stronghold for native trout, including the threatened bull trout and state sensitive westslope cutthroat trout. However, the Canadian headwaters are targeted for coal-bed methane (CBM) drilling and open-pit coal mining, threatening water and habitat quality, migratory fish populations, and all aquatic life downstream to Glacier National Park (GNP) and Flathead Lake. NOROCK is leading an international aquatics research project to assess the distribution, abundance, life-history, and genetic characteristics of native fishes in GNP and the Canadian portion of the drainage over the next five years. These baseline data will be used as a reference point for long-term population and habitat monitoring prior to potential mining or CBM development.

The potential impacts of climate change on native aquatic ecosystems of the Northern Rocky Mountains. State and federal agencies and non-governmental organizations are increasingly consumed with the recovery and restoration of native trout and salmon throughout the western United States. Complicating these issues is global warming and associated climate change and understanding how effects of climate change will influence habitat for native fish is critical for effective management and recovery of these species. NOROCK scientists and their partners are examining how climate change may be impacting the habitats of native trout throughout the Rocky Mountains and the interior western United States. The goal is to provide tools that will help managers predict potential climate change induced impacts on native fish. By developing these types of tools, researchers can assist managers in predicting potential climate change induced impacts on salmonid species throughout the Rocky Mountains.

Study examines impacts of climate change on wildlife in the Northern Rocky Mountains. The ecology of hooved big-game species in the northern Rocky Mountains, known as ungulates, is strongly influenced by climate. Climate change impacts summer precipitation, winter snow pack, and the timing of spring green-up, all of which control animal physiology, demography, diet, habitat selection, and predator prey interactions. However, the degree of response to these impacts from animals such as elk, moose, mule deer, and pronghorn antelope is uncertain. NOROCK and their collaborators will study how global climate change may impact ungulate species. The long term goal of the project is to provide the tools for natural resource managers to facilitate a better, science-based understanding of how climate change can impact various ungulate species within the region.

Composite Burn Index (CBI) Photo Series. The Composite Burn Index is a field rating of burn conditions averaged over a forest location ranging from 0.0 to 3.0. It is based on averaging 4-5 rating factors within Understory (A. - C.), Overstory (D. - E.), and over all strata (A. - E.) to rate the Total Plot. The CBI Photo Series shows burn conditions taken from field plots along a gradient of fire impact. Representative plots were selected where photos and data illustrated composite site-effects at intervals of severity. Examples offer a means to calibrate field interpretations, and display the variety of stratum responses contributing to overall ratings. This also illustrates the difficulty in applying burn severity categories or labels. NOROCK is currently developing the CBI Photo Series website which will be a comprehensive collection of CBI photo series based on geographic location and include supplemental, informational fire photos.

Climate impacts on burn severity in three forest ecoregions of the U.S. The historic range of variability in burn severity, as it relates to climate, is a critical missing link in current understanding of fire-climate relationships. This study aims to determine how climate variability, trends and teleconnections contribute to landscape heterogeneity of burn severity across three representative forest ecosystems of the western U.S. including areas surrounding Glacier National Park in Montana, Yukon-Charlie Rivers National Reserve in Alaska, and Yosemite National Park in California. Building upon past and current research and applications within USGS, other DOI agencies, and the USFS, the study spatially quantifies burn severity through Landsat remote sensing, and uses available climate data to address three scientific questions: 1) how does climate variability (e.g. seasonality, temperature, precipitation) manifest spatiotemporally in patterns of burn severity; 2) how do climate teleconnections manifest spatially and temporally in large area patterns of burn severity; and 3) to what extent can we generalize impacts and trends in burn severity across the three representative western U.S. ecoregions; how are they similar, how do they differ? Overall, results will lead to understanding how climate controls burn heterogeneity and subsequent fire effects in western U.S. forest ecosystems.

NOROCK Technical Assistance Activities

ADVISORY AND CONSULTATION

In 2008 NOROCK researchers served in the capacity of science advisor or technical consultant on approximately 80 occasions to federal, state, or private organizations. Examples of this service included:

- Advised USDA Forest Service researchers on science design issues for a black bear population abundance study in the Lake Tahoe basin, California.
- Rock Creek Allotment, Kemmerer Field Office: selected sample sites in the Rock Creek Burn (west side of Fossil Butte National Monument) and trained two Chicago Botanical Garden interns in multi-scale vegetation sampling.
- Multiple consultations with the National Elk Refuge Wildlife Biologist and Refuge Manager regarding vegetation, sage-grouse, invasive species, opportunities for funding/collaboration, etc.
- Expedition Team scientist for Extreme Ice Survey project with photographer James Balog. Sponsored by National Geographic Expeditions Council, National Science Foundation and numerous other organizations. <http://extremeicesurvey.org/>
- Canadian Wildlife Service. Guidance on a document addressing grizzly bear recovery in the Canada prairie region, Sask, Manitoba, Alberta.
- The Wildlife Society. Technical review of predator control plan.
- Provided consultation to Blackfeet Tribal Fish and Game authorities regarding bighorn sheep harvests on Tribal lands (joint meeting with Glacier National Park and the Blackfeet Fish and Game Agency, Browning.
- Swiss Federal Research Institute WSL, Birmensdorf, Switzerland, on use of the Composite Burn Index (CBI) for field sampling of burn severity, active research.
- Australia Department of Environment and Conservation, Science Division, on burn mapping approaches in Australia, active management.

TECHNICAL PUBLICATIONS OR USGS FSP REVIEW

NOROCK researchers served as reviewers for approximately 40 technical publications including the following: Journal of Wildlife Management, Conservation Biology, Conservation Genetics,

Environmental Monitoring and Assessment, Remote Sensing of Environment, and International Journal of Wildland Fire.

GRADUATE ADVISORS

NOROCK researchers served as advisor for approximately 30 graduate students at the following institutions:

- Montana State University
- University of Montana
- University of Arizona
- Oregon State University
- University of Wyoming
- Utah State University
- University of Minnesota
- Colorado State University
- University of Reno
- Washington State University

NOROCK Awards and Recognition

In 2008 four NOROCK scientists received honors for excellence in research and development within their individual disciplines.

Technical Writing

Rick Sojda, NOROCK wildlife biologist, received an award for the best decision support paper (2007) from the journal, *Environmental Modeling and Software*. As described by the journal's Editor-in-Chief, the aim of the awards is to recognize those authors whose papers epitomize the aims and scope of the journal. The certificate of award was presented at the 2008 Congress of the International Environmental Modeling and Software Society in Barcelona, Catalunya (Spain)per was joined by two other papers and authors from around the world who were recognized in the categories of integrated modeling, and generic modeling and software.

Bear Research

USGS wildlife biologists Mark Haroldson, Katherine Kendall, and Chuck Schwartz were awarded the *Scientific Leadership Award* by the Interagency Grizzly Bear Committee (IGBC) for their individual contributions to the study and conservation of bears in both the Greater Yellowstone and Northern Continental Divide Ecosystems.

NOROCK in the National Spotlight

NOROCK research is located all over the northern Rocky Mountains and western United States and focuses on a diverse spectrum of landscapes and wildlife species. Scientists produce a dynamic array of products based on their research which include information sheets, annual reports, journal articles, and books. The purpose of these resources is to provide information on NOROCK's wide range of research projects to both natural resource managers and the public.



Our publications can be found in many public venues such as interpretive centers within the National Park Service, Forest Service, Bureau of Land Management, and academic institutions throughout the northern Rocky Mountain region.

FEATURES IN USGS 2008 SCIENCE PICKS

Research highlights featured above are examples of the dynamic and exciting projects coming out of NOROCK in 2008. Because of the quality and innovation of NOROCK research, many projects were featured within the USGS network of research highlights – Science Picks. In 2008 nine NOROCK projects were highlighted in USGS Science Picks. Below are synopses of each:

- **A picture is worth a thousand words (or several degrees)...**Climate change research in Glacier National Park is revealing that northern Rocky Mountain ecosystems are responding to regional temperature trends.
- **Snowpack Affects Wildlife Disease in the Greater Yellowstone Ecosystem.** USGS researcher Paul Cross, in collaboration with colleagues at the Wyoming Game and Fish Department, recently found that increased snowpack results in longer feeding seasons and sites with longer feeding seasons had more brucellosis.
- **Science Prevails: Plans for Coal-Bed Methane Drilling Withdrawn.** The North Folk in British Columbia, Canada, is being targeted for coalbed methane (CBM) development and open-pit coal mining. To ensure decisions are supported by sound science, Congressional funding was recently provided to the USGS and collaborators to collect data on fish and wildlife populations, water quality, and the geologic and hydrologic characteristics of the watershed in 2008.
- **It's a bird, it's a plane...digital images may be able to see more than the weather.** Wildlife Biologist Rick Sojda at the USGS Northern Rocky Mountain Science Center (NOROCK) has been working with a Montana State University graduate student to develop artificial intelligence based algorithms to determine if birds can be digitally detected.
- **Groovin to the tunes of nature.** Just what does a bear do in the woods? USGS Northern Rocky Mountain Science Center (NOROCK) scientist Kate Kendall knows. Kendall's group used remote photography to learn more about black bear and grizzly bear's use of naturally-occurring bear rubs and how they respond to baited hair traps.
- **Hair sheds light on elusive carnivores.** The status of many carnivore populations is of growing concern to scientists and conservationists, making the need for data pertaining to carnivore distribution, abundance, and habitat use ever more pressing. A newly published book by Island Press entitled "Noninvasive Survey Methods for Carnivores" is a comprehensive guide for wildlife researchers who want to use "noninvasive" research techniques (those that minimize disturbance to the animal being studied) coupled with cutting-edge laboratory and statistical techniques to sample carnivore populations.
- **Not certain about climate change? Just ask you neighboring fish and big-game species.** The glaciers are receding and many areas are undergoing drought. However, many still aren't certain if climate change is really happening. Two studies are underway to examine how climate change may be impacting the habitats of native fish (cutthroat trout, grayling, and bull trout) and big-game (elk, moose, mule deer, and pronghorn antelope).

- **Fall bird migration may not be smooth sailing for all.** As the seasons change, the skies are filling with sites and sounds of the fall bird migration. At the same time, the U.S. is migrating toward more sustainable, domestically available energy resource options such as wind energy. USGS Northern Rocky Mountain Science Center researchers and their partners are developing a model of how birds use important landscapes so that managers can make knowledgeable decisions on wind farm development sites that are more protective of migratory bird species, both on land and in flight.
- **Newly released study finds 241 grizzlies in Glacier National Park.** USGS scientist Katherine Kendall and her team at the Northern Divide Grizzly Bear Project estimate that 241 grizzly bears live in and around Glacier National Park in Montana or 30 grizzlies for every 386 square miles.

USGS NEWS RELEASES, MEDIA ADVISORIES

6/18/2008. USGS News Release: What bears really do in the woods. USGS. USGS Glacier Field Station, West Glacier, MT.

7/14/2008. USGS News release: Wildlife may forecast impacts of climate change - USGS Science Center seeks understanding of climate impacts on fish and game. USGS NOROCK Center Headquarters, Bozeman, MT.

9/12/2008. USGS Media Advisory: How many grizzlies live in northwest Montana? Findings of Montana grizzly bear study to be released at Glacier National Park forum.

9/16/2008 USGS News Release: New study estimates 765 grizzly bears reside in northwest Montana. USGS. USGS Glacier Field Station, West Glacier, MT.

NEWSPAPER

Research at NOROCK turned the heads of numerous local and national news and media outlets including the Washington Post, New York Times, Smithsonian Magazine, Montana Outdoors, and Montana Magazine. In addition, NOROCK researchers and their projects have been featured on several national and international TV media venues such as local Montana news stations, NBC, the Discovery Channel, Animal Planet, and mainstream entertainment programming. Below are some examples of NOROCK's 2008 news and media features:

In 2008 NOROCK research was featured in approximately 370 known print and online news articles. Examples include:

- Coal mine would threaten trout, scientists say, 12/3/08 *Vancouver Sun*
- Whitebark pine faces variety of threats, 11/26/08 *Missoulian*
- Bears to get study, 11/14/08 *JH News and Guide*
- Lead in grizzly blood during hunt season, 11/12/08 *Jackson Hole News and Guide*
- Grizzly deaths reach legal 'trigger point', 11/3/08 *Billings Gazette*
- The good and bad news for the bears, 10/30/08 *Rexburg Standard Journal*
- Bear deaths high, 10/24/08 *Jackson Hole News and Guide*

- New study estimates 765 grizzly bears in northwest Montana, 9/16/08 Associated Press. (*This article picked up by approximately 300 newspapers, including state, national, and international media (UK, India, Indonesia, Iran)*)
- Studies look at potential climate change effects, 7/29/08 *Billings Gazette*
- 20 years after Yellowstone fires, ecosystem has largely recovered, 7/7/08 *Billings Gazette*
- Candid cameras catch bears, 7/4/08 *Waterton Boundary News*
- Scientists track toads with tiny transceivers, 6/30/08 *Casper Star*
- Video captures wolf, grizzly bear interaction., 6/26/08 *Helenair*
- Fish dinner - by the ton, 4/23/08 *Dailey Inter Lake*
- Yellowstone grizzlies denning later, 4/10/08 *Rocky Mountain Outlook*
- McCain Sees Pork Where Scientists See Success. 3/10/2008 Washington Post. Washington, DC.

MAGAZINES

Examples of NOROCK science and research in national magazine periodicals include:

- Moving and Melting., Sept/Oct 08 *Montana Magazine*
- Grizzly science., 8/08 *Discovery Magazine*
- The saga of #399 - a bear story., Summer 08 *Jackson Hole Magazine*
- Yellowstone Grizzly Bears - Part 1, Summer 08 *Yellowstone Science*
- Yellowstone Grizzly Bears - Part 2, Summer 08 *Yellowstone Science*
- Smile!, Summer 08 *Glacier Park Magazine*
- Windows on Watersheds, Spring 08 *Terra Magazine, Oregon State University*
- Tracking the Bighorns, 3/08 *Smithsonian Magazine*
- State of the Grizzly, March/April 08 *Montana Outdoors*
- McCain's Beef with Bears? - Pork. 2/8/2008 *Scientific American News*.

In 2009 NOROCK will have features in *National Geographic* and *Smithsonian* magazines, respectively.

TELEVISION

Examples of NOROCK science and research in television media include:

- Going, Going..., 10/7/08 *Dan Rather Reports*.
- Hidden camera reveals secret life of bears., 6/30/08 *NBC The Today Show*

Additional clips and segments featuring the NOROCK science include Montana NBC and CBS affiliates, Discovery Channel Canada, Inside Edition, Tonight Show-NBC, BBC, National Geographic, and Animal Planet.

RADIO AND PODCASTS

Examples of NOROCK science and research in radio and web media include:

- Bear Truth, 9/19/08 *National Public Radio - Montana*
- Yellowstone's Evolution, 8/31/08 *National Public Radio - Yellowstone*

- USGS CoreCast: Status of Grizzly Bears in Northwest Montana. 9/17/2008.
- MtnClim Conference, Silverton, Colorado, USA: Multi-scale reconstructions of snowpack variability for key watersheds in western North America: Tree-rings provide insights on the past 500 to 1000 years. 06/2008
- MtnClim Conference, Silverton, Colorado, USA: Climatic and topographic influences on the mass balance of a receding cirque glacier, Glacier National Park, Montana. 06/2008
- USGS CoreCast: Ecological Thresholds Relating to Climate Change, 01/17/2008

NOROCK WEBSITE (<http://nrmsc.usgs.gov>)

The mission of NOROCK is to produce and disseminate scientific information needed to manage and restore the ecosystems and associated plant and animal communities of the Northern Rockies. In addition to providing information for natural resource managers, NOROCK scientists appreciate the value of relaying technical information in a manner that enables non-science audiences to gain sound science-based knowledge. A key approach to transferring scientific information to non-science audiences is through effective and engaging outreach and education resources that enable individuals to appreciate and see value in research programs that enhance and protect the natural resources of the Northern Rockies.

The NOROCK website is a hub of information for individuals interested in learning more about current scientific projects. The site contains the following supplemental information about Center activities:

- Up to date Science Features which highlight the breakthrough science happening at NOROCK.
- Latest media (newspaper, magazine, and broadcast) releases of NOROCK work.
- Information on NOROCK scientists including projects, publications, staff, and students
- NOROCK information sheets and research briefs can be found on the NOROCK website.
- Photo galleries of images captured during research activities that include wildlife, scenic imagery, and scientists in action.
- Special media features which include Podcasts, video of Grizzly and black bears, and interactive panoramic photographs of Glacier National Park.

Between April 1 and December 1 of 2008 the NOROCK website received 5.6 million hits, resulting in 720,000 page visits. Within the nine month period, 30% of web traffic occurred in June, corresponding to the release of the NDGBP Remote Camera footage and release of grizzly bear estimates in the NCDE.

APPENDIX A.

NOROCK Technical Publications and Presentations

NOROCK authors indicated in bold type.

NOROCK Publications

In Press

Bateman, D. S., and **R. E. Gresswell**. Passive integrated transponder (PIT) retention rates in headwater populations of coastal cutthroat trout. *North American Journal of Fisheries Management*.

Butler, D.R., G.P. Malanson, S.J. Walsh, and **D.B. Fagre** (eds). Accepted. The Changing Alpine Treeline of Glacier National Park, Montana, USA. Elsevier, The Netherlands.

Conner, M.M., J.A. Blanchong, **M.R. Ebinger, & P.C. Cross**. In press. Infectious disease in cervids: models, data, & management challenges. *The Year in Ecology and Conservation Biology*

Corn P.S. In press. Selection of species and sampling areas — the importance to inference. In: Dodd CK Jr, Editor. *Amphibian ecology and conservation, a handbook of techniques*. Oxford University Press.

Cross, P.C., J Drewe, **V. Patrek**, G Pearce MD Samuel & RJ Delahay. *In press*. Host population structure and implications for disease management. *In* RJ Delahay, GC Smith, & MR Hutchings (eds.) *Management of Disease in Wild Mammals*. Springer-Verlag Tokyo, Inc. Tokyo.

Fagre, D.B. Accepted. Introduction: Understanding the Importance of Alpine Treeline Ecotones in Mountain Ecosystems. Pages xx-xx *in* Butler, D.R., G.P. Malanson, S.J. Walsh, and D.B. Fagre (eds), *The Changing Alpine Treeline of Glacier National Park, Montana, USA* Elsevier, The Netherlands.

Goebel A.M., Ranker T.A., **Corn P.S.**, Olmstead R.G. In press. Mitochondrial DNA evolution in the *Anaxyrus boreas* species group. *Molecular Phylogenetics and Evolution*.

Guscio, C.G., **B.R. Hossack**, L.A. Eby, and **P.S. Corn**. In press. Post-breeding habitat use by adult boreal toads (*Bufo boreas*) after wildfire in Glacier National Park, USA. *Herpetological Conservation and Biology*.

Hines, A.M., V.O. Ezenwa, **P.C. Cross**, & JR Rogerson. In press. Effects of supplemental feeding on gastrointestinal parasite infection in Rocky Mountain Elk (*Cervus elaphus*). *Veterinary Parasitology*.

Hossack, B. R., and **P. S. Corn**. In press. Wildfire effects on water temperature and selection of breeding sites by the Boreal Toad (*Bufo boreas*) in seasonal wetlands. *Herpetological Conservation and Biology*.

Keane, R.E., Agee, J, Fule, P, Keeley, **J.**, **Key**, C., Kitchen, S., Miller, R., and Schulte, L. (in press). The ecological effect of large fires in North America: benefit or catastrophe. *International Journal of Wildland Fire*.

Kendall, K. C., J. B. Stetz, D. A. Roon, L. P. Waits, J. B. Boulanger, and D. Paetkau. 2008. Grizzly Bear Density in Glacier National Park, Montana. *Journal of Wildlife Management*. (IN PRESS. – November 2008)

Kendall, K. C., J. B. Stetz, J. Boulanger, **A. C. Macleod**, D. Paetkau, and G. C. White. 2009. Demography and genetic structure of a recovering brown bear population. *Journal of Wildlife Management*. (IN PRESS – January 2009)

Luikart, G., **K. A. Keating**, J. T. Hogg, S. Zundel, C. Miquel, B. Steele, K. Foresman, and P. Taberlet. 2008. Low genotyping error rates for microsatellite multiplexes and non-invasive fecal DNA samples from bighorn sheep. *Journal of Wildlife Management* 72: in press.

Maichak, E.J., B.M. Scurlock, J.D. Rogerson, W.H. Edwards, A. Barbknecht, **P.C. Cross**. *In press*. Effects of density, time, and generalist scavenging on risk of brucellosis transmission in feedground elk of western Wyoming. *Journal of Wildlife Diseases*

Malanson, G.P., D.G. Brown, D.R. Butler, D.M. Cairns, **D.B. Fagre**, and S.J. Walsh. Accepted. Ecotone Dynamics: Invasibility of Alpine Tundra by Tree Species from the Subalpine Forest. Pages xx-xx in Butler, D.R., G.P. Malanson, S.J. Walsh, and D.B. Fagre (eds), *The Changing Alpine Treeline of Glacier National Park, Montana, USA* Elsevier, The Netherlands.

Murphy P.J., St-Hilaire S., Bruer S., Peterson C.R, **Corn P.S.**. In press. Distribution and pathogenicity of *Batrachochytrium dendrobatidis* in boreal toads from the Grand Teton area of western Wyoming. *EcoHealth*.

Oosthuizen, C, **P.C. Cross**, J.A. Bowers, C.T. Hay, M.R. Ebinger, P. Buss, M. Hofmeyr, E.Z. Cameron. *In press*. Chemical immobilization of African buffalo (*Syncerus caffer*) in Kruger National Park: Evaluating effects on movement, survival and reproduction. *Journal of Wildlife Management*.

Pederson, G. T., L. J. Graumlich, **D. B. Fagre**, T. Kipfer, and **C. C. Muhlfeld**. 2008. In Press. A Century of climate and ecosystem change in Western Montana: What do temperature trends portend? *Climatic Change*.

Sánchez-Marrè, M., K. Gibert, **R. S. Sojda**, J. P. Steyer, P. Struss, I. Rodríguez-Roda, J. Comas, V. Brilhante, and E. A. Roehl. in press. Chapter 8: Intelligent Environmental Decision Support Systems.

St. George S., D.M. Meko, M.P. Girardin, G.M. MacDonald, E. Nielsen, **G.T. Pederson**, D.J. Sauchyn, J.C. Tardif, and E. Watson. 2008. The tree-ring record of drought on the Canadian Prairies. *Journal of Climate*. *In press*.

Taper, M.L, José M. Ponciano, Bradley B. Shepard, **Clint C. Muhlfeld**, and David F. Staples. In-print. Risk based viable population monitoring of the upper Flathead River Bull Trout. *Conservation Biology*.

Published 2008

Boulanger, J., **K. C. Kendall**, **J. B. Stetz**, D. A. Roon, L. A. Waits, and D. Paetkau. 2008. Use of multiple data sources to improve DNA-based mark-recapture population estimates of grizzly bears. *Ecological Applications*. 18(3):577–589.

Boyer, M, **Clint C. Muhlfeld**, and Fred Allendorf. 2008. Rainbow trout invasion and the spread of hybridization with westslope cutthroat trout. *Canadian Journal of Fisheries and Aquatic Sciences*. On-line-February.

Conner, M.M., JA Blanchong, **M.R. Ebinger**, & **P.C. Cross**. 2008. Infectious disease in cervids of North America: models, data, & management challenges. *The Year in Ecology and Conservation Biology*. 1134: 146-172.

Corn P.S.. 2008. Perspectives from the Aldo Leopold Wilderness Research Institute: The U.S. Geological Survey and wilderness research. *International Journal of Wilderness* 14(2):24, 33.

Guscio C.G., **Hossack B.R**, Eby L.A., **Corn P.S.** 2008. Post-breeding habitat use by adult boreal toads (*Bufo boreas boreas*) after wildfire in Glacier National Park, USA. *Herpetological Conservation and Biology* 3:55–62.

Guy, T. J., **R. E. Gresswell**, and M. A. Banks. 2008. Landscape-scale evaluation of genetic structure among barrier-isolated populations of coastal cutthroat trout *Oncorhynchus clarkii clarkii*. *Canadian Journal of Fisheries and Aquatic Sciences* 65:1749-1762.

Haroldson, M.A., **C.C. Schwartz**, and K.A. Gunther. 2008. Grizzly bears in the Greater Yellowstone Ecosystem: garbage, controversy, and decline to recovery. *Yellowstone Science* 16(2):13-24.

Haroldson, M.A., K.A. Gunther, and T. Wyman. 2008. Possible grizzly cub adoption in Yellowstone National Park. *Yellowstone Science* 16(2):42-44.

Hay, C.T., **P.C. Cross**, & P. Funston. 2008. Tradeoffs of predation and foraging explain sexual segregation in African buffalo (*Syncerus caffer*). *Journal of Animal Ecology*.77:850-858.

Hossack B.R., **Corn P.S.**. 2008. Wildland fire and seasonal wetlands: effects on water temperature and selection of breeding sites by the boreal toad (*Bufo boreas*). *Herpetological Conservation and Biology* 3:46–54.

Keigley, R. B., and M. R. Frisina. 2008. Aspen Height, Stem-girth and Survivorship in Area of High Ungulate Use. *Northwest Science*. 82:199-210.

Kendall, K. C., **J. B. Stetz**, D. A. Roon, L. P. Waits, J. B. Boulanger, and D. Paetkau. 2008. Grizzly Bear Density in Glacier National Park, Montana. *Journal of Wildlife Management*.

Kendall, K. C. and K. S. McKelvey. 2008. Hair Collection. *In* R. Long, P. MacKay, J. Ray, and W. Zielinski, editors. *Noninvasive survey methods for North American Carnivores*. Island Press, Washington, DC., USA.

Licciardi, J.M., and **Pierce, K.L.**, 2008, Cosmogenic exposure-age chronologies of Pinedale and Bull Lake glaciations in greater Yellowstone and the Teton Range, USA: *Quaternary Science Reviews* 27, p. 814-831, doi:10.1016/j.quascirev.2007.12.005.

Luikart, G., S. Zundel, D. Rioux, C. Miquel, **K. A. Keating**, J. T. Hogg, B. Steele, K. Foresman, and P. Taberlet. 2008. Low genotyping error rates and noninvasive sampling in bighorn sheep. *Journal of Wildlife Management* 72:299–304.

Marsh W., **G.T. Pederson, D.B. Fagre**, and S.T. Gray, 2008. Trends in snowpack evolution, spring precipitation, and streamflow in the Crown of the Continent Ecosystem [abstract]. MTNCLIM 2008, June 9-12, Silverton CO.

Mead, R., J. Paxton, and **R.S. Sojda**. 2008. Identifying Biological Echoes in Radar Scans Using Machine Learning. pages 1758-1765 in: Sánchez-Marrè, M., J. Béjar, J. Comas, A. Rizzoli and G. Guariso, eds. *Proceedings of the Fourth Biennial Meeting of the International Congress on Environmental Modelling and Software: Integrating Sciences and Information Technology for Environmental Assessment and Decision Making*. Barcelona, Catalonia.

Morgan, L.A., **Pierce, K.L.**, and Shanks, W.C., 2008, Track of the Yellowstone hotspot: Young and ongoing geologic processes from the Snake River Plain to the Yellowstone Plateau and Tetons: *Geological Society of America Field Guide* 10, p. 139-173. doi:10.1130/2008.fld010(08).

Muhlfeld Clint C., David H. Bennett, Kirk Steinhorst, Brian Marotz, and Matthew C. Boyer. 2008. Using bioenergetics modeling to estimate consumption of native juvenile salmonids by nonnative northern pike in the upper Flathead River system, Montana. *North American Journal of Fisheries Management*. On-line April 2008.

Pederson G.T., S.T. Gray, D.B. Fagre, J.J. Shinker, L.J. Graumlich, 2008. Multi-scale reconstructions of snowpack variability for key watersheds in western North America: Tree-rings provide insights on the past 500 to 1000 years [abstract]. MTNCLIM 2008, June 9-12, Silverton, CO.

Prato, A., B. Keane, and **D. Fagre**. 2008. Assessing and managing wildfire risk in the wildland-urban interface. Pg. 275-297 In *Ecosystem ecology research trends*. Nova Science Publishers, Inc., New York, USA.

Reardon, B. A., G. T. Pederson, C. J. Caruso, and **D. B. Fagre**. 2008. Spatial reconstructions and comparisons of historic snow avalanche frequency and extent using tree rings in Glacier National Park, Montana, U.S.A. *Arctic, Antarctic, and Alpine Research* 40:148-160.

Reardon, B. A., J. T. Harper, and **D. B. Fagre**. 2008. Mass balance of a cirque glacier in the U.S. Rocky Mountains. in *Proceedings of the mass balance measurement and modeling workshop*, Skeikampen, Norway, 26-28 March 2008.

Schwartz, C.C., and G.C. White. 2008. Estimating reproductive rates for female bears: proportions versus transition probabilities. *Ursus* 19(1):1-12.

Schwartz, C. C., M. A. Haroldson, S. Cherry, and **K. A. Keating**. 2008. Evaluation of rules to distinguish unique female grizzly bears with cubs in Yellowstone. *Journal of Wildlife Management* 72(2):543-554.

Souchon, Y., C. Sabaton, R. Deibel, D. Reiser, **J.L. Kershner**, M. Gard, C. Katopodis, P. Leonard, N.L. Poff, W.J. Miller and B. L. Lamb. 2008. Detecting Biological Responses to flow management: Missed opportunities; Future directions. *River Research and Applications* 24: 1-13

Stetz, J. B., A. C. Macleod, and K. C. Kendall. 4/2008. Color photographs that illustrate the article, "Multiple data sources improve DNA-based mark–recapture population estimates of grizzly bears," (Ecological Society Bulletin Photo Gallery). Ecological Society of America. *Bulletin of the Ecological Society of America* 89(2):126-127.

Swenson, J.E., and **M.A. Haroldson.** 2008. Observations of mixed-aged litters in brown bears. *Ursus* 19(1):73-79.

Torgersen C. E., **R. E. Gresswell**, D. S. Bateman, and K. M. Burnett. 2008. Spatial identification of tributary impacts in river networks Pages 159-182 *in* S. P. Rice, A. G. Roy, and B. L. Rhoads, editors. *River confluences, tributaries and the fluvial network*. Wiley, London.

Watson, E., **G.T. Pederson**, B.H. Luckman, and **D.B. Fagre.** 2008 (February). Glacier mass balance in the northern U.S. and Canadian Rockies: paleo-perspectives and 20th century change. Pages 141-153 *In* Ben Orlove, Ellen Wiegandt and Brian Luckman (Eds.), *Darkening Peaks: Glacier Retreat, Science, and Society*, University of California Press, Berkeley, CA. USA. 280pp.

Winnie, J.A. Jr., **P.C. Cross**, W.M. Getz. 2008. Habitat quality and heterogeneity influences distribution, individual and herd behavior in African Buffalo (*Syncerus caffer*). *Ecology*. 89:1457-1468.

NOROCK Technical Reports

Battaglia, L., D. Batzer, **G. Chong**, D. Cooper, A. Hudak, and M. Young. Submitted February 2008. "Review of Terrestrial Monitoring Protocols for the Grand Canyon: Report of the Protocol Evaluation Panel (PEP)."

Bjornlie, D., and **M. A. Haroldson.** 2008. Grizzly bear use of insect aggregation sites documented from aerial telemetry and observation. Pages 34–36 *in* C. C. Schwartz, M. A. Haroldson, and K. West, editors. *Yellowstone grizzly bear investigations: annual report of the Interagency Grizzly Bear Study Team, 2007*. U.S. Geological Survey, Bozeman, Montana, USA.

Courtemanch, A., **G. Chong** and S. Kilpatrick. 2008. Upper Snake River Basin Sage-Grouse Conservation Plan, January 2008; Appendix 3: "Remote Sensing Analysis of Sage-Grouse Winter Habitat in Grand Teton National Park and Bridger-Teton National Forest, Wyoming.

Ebinger, M.R. & P.C. Cross. 2008 Surveillance for brucellosis in Yellowstone bison: The power of various strategies to detect vaccination effects. National Park Service, Mammoth, WY, YCR-2008-04. 69 pages.

Gresswell, R. E. 2008. Conservation and restoration of native trout in the face of climate change, invasive species, and development. Pages 247-249 *in* R. F. Carline and C. LoSapio,

editors. Sustaining wild trout in a changing world; Proceedings of Wild Trout IX symposium; 2007 October 9-12. Wild Trout Symposium, Nampa, Idaho.

Gresswell, B. and K. Homel. 2008. Distribution, abundance, and movement of native cutthroat trout in the Snake River below Jackson Lake. NPS Investigators Annual Report, USGS Northern Rocky Mountain Science Center, Bozeman Montana.

Gresswell, B. and K. Homel. 2008. Distribution, abundance, and movement of native cutthroat trout in the Snake River below Jackson Lake. Annual Report 2007 for Wyoming Game and Fish. USGS Northern Rocky Mountain Science Center, Bozeman Montana.

Gresswell, R. E., and K. Homel. Evaluating the effect of flow regulation on the distribution, abundance, and movement of native cutthroat trout in the Snake River below Jackson Lake. Project Completion Report FY07 for Greater Yellowstone Coordinating Committee. USGS Northern Rocky Mountain Science Center, Bozeman Montana.

Gunther, K. A., M. T. Bruscano, S. Cain, K. Frey, L. Hanauska-Brown, **M. A. Haroldson, and C. C. Schwartz.** 2008. Grizzly bear-human conflicts in the Greater Yellowstone Ecosystem. Pages 42–44 *in* C. C. Schwartz, M. A. Haroldson, and K. West, editors. Yellowstone grizzly bear investigations: annual report of the Interagency Grizzly Bear Study Team, 2007. U.S. Geological Survey, Bozeman, Montana, USA.

Guy, C., **R. Gresswell,** and C. Downs. Spawning demographics and early life history of bull trout *Salvelinus confluentus* in Quartz Lake, Glacier National Park, Montana. Project Status Report, Glacier National Park Fund, October 2008 Board Meeting, USGS Montana Cooperative Fishery Research Unit, Montana State University, Bozeman Montana.

Haroldson, M. A. 2008. Assessing trend and estimating population size from counts of unduplicated females. Pages 9–15 *in* C. C. Schwartz, M. A. Haroldson, and K. West, editors. Yellowstone grizzly bear investigations: annual report of the Interagency Grizzly Bear Study Team, 2007. U.S. Geological Survey, Bozeman, Montana, USA.

Haroldson, M. A., C. Dickinson, and D. Bjornlie. 2008. Marked animals. Pages 4–8 *in* C. C. Schwartz, M. A. Haroldson, and K. West, editors. Yellowstone grizzly bear investigations: annual report of the Interagency Grizzly Bear Study Team, 2007. U.S. Geological Survey, Bozeman, Montana, USA.

Haroldson, M. A., and K. Frey. 2008. Estimating sustainability of annual grizzly bear mortalities. Pages 24–27 *in* C. C. Schwartz, M. A. Haroldson, and K. West, editors. Yellowstone grizzly bear investigations: annual report of the Interagency Grizzly Bear Study Team, 2007. U.S. Geological Survey, Bozeman, Montana, USA.

Haroldson, M. A., K. A. Gunther, and T. Wyman. 2008. Possible grizzly cub adoption in Greater Yellowstone Ecosystem. Pages 15–18 *in* C. C. Schwartz, M. A. Haroldson, and K. West, editors. Yellowstone grizzly bear investigations: annual report of the Interagency Grizzly Bear Study Team, 2007. U.S. Geological Survey, Bozeman, Montana, USA.

Haroldson, M. A., and **S. R. Podruzny.** 2008. Whitebark pine cone production. Pages 37–38 *in* C. C. Schwartz, M. A. Haroldson, and K. West, editors. Yellowstone grizzly bear investigations: annual report of the Interagency Grizzly Bear Study Team, 2007. U.S. Geological Survey, Bozeman, Montana, USA.

Interagency Grizzly Bear Study Team. 2008. Reassessing methods to distinguish unique female grizzly bears with cubs-of-the-year in the Greater Yellowstone Ecosystem. Interagency Grizzly Bear Study Team, U.S. Geological Survey Northern Rocky Mountain Science Center, Montana State University, Bozeman, Montana, USA.

Keating, K. A. 2008. Bighorn sheep ecology and conservation in Waterton-Glacier International Peace Park: progress report (3/08; submitted to Glacier and Waterton Lakes National Parks).

Keating, K. A. 2008. Bighorn sheep ecology and conservation in Waterton-Glacier International Peace Park. NPS Investigator's Annual Report (3/08).

Keating, K. A. 2008. Bighorn sheep ecology and conservation in Dinosaur National Monument. NPS Investigator's Annual Report (3/08).

Keigley, R. B. 2008. Annual Report of 2007 Field Season; Effect of Browsing Following Wildfire in the Missouri Breaks. Submitted to BLM.

Schwartz, C. C., M. A. Haroldson, and K. West, editors. 2008. Yellowstone grizzly bear investigations: annual report of the Interagency Grizzly Bear Study Team, 2007. U.S. Geological Survey, Bozeman, Montana, USA.

Tenant, L. B., C. S. Guy, and R. E. Gresswell. 2008. Spawning Demographics and Early Life History of Bull Trout *Salvelinus confluentus* in Quartz Lake, Glacier National Park, Montana. Investigators annual report 2007 to National Park Service, Glacier National Park. USGS Montana Cooperative Fishery Research Unit, Montana State University, Bozeman Montana.

Vatland, S. J., and R. E. Gresswell. 2008. Fluvial Arctic grayling movement patterns in the upper Big Hole River, Montana: Insight from past tagging data and direction for future research. Pages 95-96 in R. F. Carline and C. LoSapio, editors. Sustaining wild trout in a changing world; Proceedings of Wild Trout IX symposium; 2007 October 9-12. Wild Trout Symposium, Nampa, Idaho.

Wetzel, W. , **G. Chong,** A. Courtemanch and N. Pope. 2008. Upper Snake River Basin Sage-Grouse Conservation Plan, January 2008; Appendix 4: "Composition and structure of sage-grouse winter habitat in the Upper Snake River Basin."

Zale, A. V., **R. E. Gresswell, and S. Vatland.** 2008. Evaluation of Habitat Restoration for the Fluvial Arctic Grayling in the Big Hole River, Montana. Annual briefing project progress report, USGS Montana Cooperative Fishery Research Unit, Montana State University, Bozeman Montana.

NOROCK Technical Presentations (Oral)

Bar-David, S., Bar-David I.; **Cross P.C.;** Ryan S.J.; Knechtel C.U.; Getz W.M. 2008. Movement path recursion in large herbivores: the African buffalo in South Africa 20th International Congress of Zoology.

Christensen, L., C. Tague, J. Baron, C. Allen, N. Stephenson, **D. Fagre**, D. Peterson and D. McKenzie. 2008. Modeling Mountain Ecosystem Responses to Climate Change. 2008. 2nd USGS Modeling Conference "Painting the Big Picture", Orange Beach, AL.

Chong, G. 2008. "Mancos Shale Biology Blitz" Final presentation to the USGS CRISP team and BLM collaborators. Grand Junction.

Corn S. 2008. Climate change and Montana amphibians and reptiles. Workshop: Climate Change and Energy Development, joint meeting of the Society for Northwestern Vertebrate Biology and the Montana Chapter of The Wildlife Society. Missoula, MT.

Corn, S. 2008. Amphibian Research in Glacier National Park. Briefing for Glacier National Park superintendent and staff.

Corn S., Hossack B., Pilliod D. 2008. Amphibians and Fire in the Northern Rockies. The '88 Fires: Yellowstone and Beyond, International Association of Wildland Fire. Jackson, WY.

Cross, P.C. 2008. Ecology and Management of brucellosis in the Greater Yellowstone Ecosystem. Ecology Seminar, Montana State University, Bozeman MT.

Ebinger, M., P.C Cross and R Wallen. 2008. Modeling bison brucellosis control strategies. University of Montana Conservation Biology Meeting.

Graves, T. A., K. C. Kendall, J. B. Stetz, and A. C. Macleod. 2008. Modeling Variation in Grizzly Bear Density within a population. USGS. 41st Joint Annual Conference of the Arizona and the New Mexico Chapters of the Wildlife Society and the Arizona and New Mexico Chapter of the American Fisheries Society, Prescott, AZ.(T. Graves presented)

Gresswell. R. E. 2008. Conservation and restoration of native trout in the face of climate change, invasive species, and development. Idaho Chapter American Fisheries Society, Post Falls, Idaho.

Gresswell. R. E. 2008. Conserving and restoring native trout in the face of climate change, invasive species, and development. Montana Chapter, American Fisheries Society, Billings, Montana.

Gresswell. R. E. 2008. Conserving and restoring native trout in the face of climate change, invasive species, and habitat degradation. Western Division, American Fisheries Society, Portland, Oregon.

Gresswell. R. E. 2008. Shifting paradigms in stream ecology. North American Benthological Society, Salt Lake City, Utah.

Gresswell, R. E. , D. S. Bateman, M. A. Banks, A. M. Burger, T. J. Guy, J. E. B. Wofford, C. E. Torgersen. 2008. Assessing the effects of network connectivity on the structure of fish assemblages in headwater streams of western Oregon. American Society for Limnology and Oceanography, St. Johns, Newfoundland, Canada

Gresswell, R. E., D. S. Bateman, C. E. Torgersen, D. Hockman-Wert, and A. M. Berger (coauthor but not presenter).2008. Habitat units to landscapes: sampling headwater streams in western Oregon. American Fisheries Society, Ottawa, Ontario, Canada

Gresswell, R. E. , T. J. Guy, and Helen Neville. 2008. Landscape-scale effects of disturbance on genetic structure of salmonid populations in headwater streams. The '88 Fires: Yellowstone and Beyond Conference, International Association of Wildland Fire, Jackson Hole, Wyoming

Haroldson, M. September 13, 2008, Grand Targhee Resort, Alta, Idaho. Grizzly bear–Whitebark pine relationships in the Greater Yellowstone Ecosystem. Presentation at the Whitebark Pine Ecosystem Foundation 8th Annual Meeting.

Haroldson, M. August 26, 2008, Chico Hot Springs and Resort, Pray, Montana. Changing use of spawning Cutthroat Trout by grizzly bears in tributary streams to Haroldson, M. 2008. Yellowstone Lake. Presentation to the Lake Trout Suppression in Yellowstone Lake Science Panel.

Haroldson, M. March 18, 2008. Mammoth, Yellowstone National Park, Wyoming. Student group from University of Minnesota. Grizzly bear research and population monitoring efforts in the Greater Yellowstone Ecosystem.

Keating K. 2008. Organized and presented material for day-long tour of Mount Haggin Wildlife Management Area. 15th Wildland Shrub Symposium, Bozeman, MT.

Keating K. 2008. Modeling utilization distributions in space and time. Paper presented at the annual meeting of the Montana Chapter of The Wildlife Society, Missoula, Montana.

Keating K. 2008. Metapopulation structure of bighorn sheep in Waterton-Glacier International Peace Park. Paper presented at the 16th Biennial Symposium, Northern Wild Sheep and Goat Council, Midway, Utah, April 27–May 1. NOTE: Presentation accepted and prepared, but canceled due to a death in the family.

Keating K. 2008. Large mammal ecology in the northern Rocky Mountains. Research program review prepared for and presented to Sue Haseltine and Bruce Jones.

Keating K. 2008. Bighorn sheep in Waterton-Glacier: the spatial ecology of a highly traditional species. Research update presented to the staff of Glacier National Park.

Keigley, R. B., and M. R. Frisina. 2008. Sustainable Habitat and Measurement and Management of Browsing Pressure. 15th Wildland Shrub Symposium, Bozeman, MT

Keigley, R. B., and K. Undlin. 2008. Effect of Browsing Following Wildfire in the Missouri Breaks. 15th Wildland Shrub Symposium, Bozeman, MT.

Kendall, K. C., **J. B. Stetz**, D. A. Roon, L. P. Waits, and J. B. Boulanger. 2008. Grizzly Bear Density in Glacier National Park, Montana. USGS. Montana Chapter of The Wildlife Society Meeting, Missoula, MT. (J. Stetz presented)

Kendall, K. C. 2008. Update on Greater Glacier Bear DNA Project and Northern Divide Bear Project (Crown Managers Partnership Forum 2008). Somers, MT.

Kendall, K. C. 2008. Briefing on the Northern Divide Bear Project given to USGS Executive Leadership Team. USGS. Reston, VA.

- Kendall, K. C.** 2008. Briefing on the Northern Divide Bear Project given to USGS Program Managers and other staff. USGS. Reston, VA.
- Kendall, K. C.** 2008. Briefing on the Northern Divide Bear Project given to Heather Stefanik (Legislative Assistant, Rep. Rehberg). USGS. Washington, DC.
- Kendall, K. C.** 2008. Briefing on the Northern Divide Bear Project given to Julie Middleton (Legislative Assistant for Sen. Baucus), Ginny James (Sen. Appropriations Subcommittee), Nick Matiella (Legislative Assistant for Sen. McCain). USGS. Washington, DC.
- Kendall, K. C.** 2008. Briefing on the Northern Divide Bear Project given to Kameran Onley (DOI Asst. Secretary for Water and Science, Hardy Pearce - USGS) . USGS. Washington, DC.
- Kendall, K. C.** 2008. Briefing on the Northern Divide Bear Project given to Matt Jennings (Legislative Assistant, Sen. Tester). USGS. Washington, DC.
- Kendall, K. C.** 2008. Briefing on Northern Divide Bear Project to U.S. Forest Service staff. USGS. USFS Flathead National Forest Headquarters, Kalispell, MT.
- Kendall, K. C.** 2008. Assessing Status and Trends of Grizzly and Black Bear Populations via Genetic Sampling. Briefing (Northern Rocky Mountain Science Center Summer Meeting - BRD Science Information Sharing). USGS. Montana State University Alumni Center, Bozeman, MT.
- Kendall, K. C.** 2008. Press Conference: release of Northern Divide Grizzly Bear Project population estimate. USGS. Community Building, Glacier National Park Headquarters, West Glacier, MT.
- King, CH, AD LaBeaud, **PC Cross**, WM Getz. 2008. Rift Valley fever virus infection in African buffalo (*Syncerus caffer*) herds in rural South Africa--Evidence of inter-epizootic transmission. American Society. American Society of Tropical Medicine and Hygiene.
- Macleod, A. C. and K. C. Kendall.** 2008. Northern Divide Grizzly Bear Project. (invited). USGS. 27th Annual North American Wildlife Enforcement Officers Association (NAWEOA) conference, Great Falls, MT. (A. Macleod presented)
- Marsh W, **GT Pederson, DB Fagre**, and ST Gray, 2008. Trends in snowpack evolution, spring precipitation, and streamflow in the Crown of the Continent Ecosystem. MTNCLIM 2008, June 9-12, Silverton CO.
- Muhlfeld, Clint C.** 2008. Aquatic research and monitoring in the Crown of the Continent Ecosystem. Glacier National Park.
- Muhlfeld, Clint C.** 2008. Aquatic research and monitoring in the Crown of the Continent Ecosystem. University of Montana, Flathead Biological Station, Somers, Montana,
- Muhlfeld, Clint C.** Thomas E. McMahon, and Durae Belcer. 2008. Spatial and temporal dynamics of spawning between native westslope cutthroat trout (*Oncorhynchus clarkii lewisii*), introduced rainbow trout (*O. mykiss*), and their hybrids, with implications for hybridization and loss of adaptation. Montana Chapter American Fisheries Society, Billings, Montana.

Muhlfeld, Clint C., Thomas E. McMahon, and Matthew C. Boyer. 2008. Local-habitat, landscape, and biotic factors associated with the distribution of hybridization between native westslope cutthroat trout and introduced rainbow trout in the upper Flathead River system. Montana Chapter American Fisheries Society, Billings, Montana.

Muhlfeld, Clint C. 2008. Preservation of Bull Trout in Glacier National Park. Glacier National Park Fund Annual Meeting, Whitefish.

Muhlfeld, Clint C. 2008. Instream flows needed for native fish downstream of Hungry Horse Dam. Bull Trout Working Group, Glacier National Park.

Murphy P, **Corn S.** 2008. Climate change & North American amphibians. Idaho Fish and Game Department Spotted Frog Workshop. Boise, ID.

Patrek, V., P.C. Cross, M. Taper, S. Creel. 2008. The Effects of Supplemental Feeding on Stress Levels in Elk. Ecological Society of America.

Pederson G.T. (presenter) and S.T. Gray. 2008. Climate change impacts and implications for the Greater Yellowstone Ecosystem. Lake trout suppression workshop. August 25-29, 2008, Chico Hotsprings, Pray, MT.

Pederson G.T. (presenter), S.T. Gray, J.J. Shanker, **D.B. Fagre** and L.J. Graumlich. 2008. Multi-scale reconstructions of snowpack variability for key watersheds in western North America: Tree-rings provide insights on the past 500 to 1000 years. [abstract] In: *MTNCLIM 2008 proceedings*; June 9-12, 2008, Silverton CO.

Pierce K. 2008. The Yellowstone hotspot track—Integrated parameters favor model of a deep-seated plume head followed by a plume tail: Geological Society of America, Abstracts with programs v. 39, N. 6, p. 291.

Pugesek, B.H., D.W. Roberts, S. Mellmann-Brown. 2008. Modeling Riparian Vegetation. Science meeting on the ecology of the Snake River.

Sojda, R. 2008. Montana State University, Ecology Department Seminar – Wind Energy
USDI-Geological Survey, UMESC seminar – Wind Energy/ NEXRAD

Sojda, R. 2008. Montana Chapter, The Wildlife Society - Lower Red Rock Lake And Adjacent Wetlands: A Preliminary Understanding Of Their Geohydrology

Sojda, R. 2008. Montana State University, Ecology Department Seminar Series – Wildlife Friendly Wind Power

Sojda, R. 2008. Montana State University, Mechanical Engineering Department - Wildlife Friendly Wind Power

Stetz, J., K. C. Kendall, and A. C. Macleod. 2008. USGS Remote Camera work - what we've learned. USGS. Waterton-Glacier Science and History Day, Bayshore Inn Convention Centre in Waterton Lakes National Park, AB, Canada.. (J. Stetz presented)

Stetz, J. 2008. Brief Presentation on the Greater Glacier Area and Northern Divide Grizzly Bear Projects and field trip for University of Montana Conservation Genetics class. USGS.

Bowman/Quartz drainages, Glacier National Park, MT. (J. Stetz presented)

Stetz, J. B., K. C. Kendall, and A. C. Macleod. 2008. Briefing on bear DNA projects to new Glacier National Park Fund board member. USGS. Science Center, Glacier National Park Headquarters, West Glacier, MT.

NOROCK Technical Presentations (Poster)

Ault T .R., A.K. Macalady, **G.T. Pederson**, J.L. Betancourt, and M.D. Schwartz. 2008. Northern Hemisphere modes of variability and the timing of spring. [abstract] In: *Characterizing the Phenology of Southwest Landscapes*: October 10, 2008 University of Arizona, Tucson, AZ.

Barnett, D, K. McCloskey, and **G. Chong**. 2008. "An Assessment of Cheatgrass Invasion in Teton County." Sixth Fire Effects Symposium, 7 February 2008, Teton Science School.

Bekker, M. F. and **Fagre, D. B.** 2008. Ribbon Forest and Snow Conditions in Glacier National Park, Montana. MTNCLIM 2008 Mountain Climate Research Conference, Mountain Studies Institute, Silverton, CO.

Cross P.C., E.K. Cole, A.P. Dobson, W.H. Edwards, K.L. Hamlin, G. Luikart, A.D. Middleton, B.M. Scurlock, P.J. White. 2008. Disease in the 'New West': effects of changing elk demography on brucellosis dynamics. University of Montana Conservation Biology Meeting.

Marsh, W., **G. Pederson, D. Fagre**, and S. Gray. 2008. Trends in Snowpack Evolution, Spring Precipitation, and Streamflow in the Crown of the Continent Ecosystem. MTNCLIM 2008 Mountain Climate Research Conference, Mountain Studies Institute, Silverton, CO.

Pugesek. B.H. 2008. Modeling non-linear sequences in earth change and disease pandemics. 2nd USGS Modeling Conference.

Pugesek. B.H. 2008. Modeling non-linear sequences in earth change and disease pandemics. Mathematical tools for multi-scale biological processes Conference.

Reardon, B.A., E. Peitzsch, and **D. Fagre**. 2008. Sliding into Spring: Understanding Glide Slab Avalanches in Glacier National Park, Montana. International Snow Science Workshop: A Merging of Theory and Practice. Whistler, British Columbia, Canada.

Tennant, L. B., R. E. Gresswell, and C. S. Guy. 2008. Spawning demographics and early life history of lacustrine-adfluvial bull trout (*Salvelinus confluentus*) in Quartz Lake, Glacier National Park, Montana. Montana Chapter, American Fisheries Society, Billings, Montana Poster.

Sojda, R. 2008. Montana Chapter, The Wildlife Society - A Proposal For Studying Wetlands In The Face Of Shifting Agricultural Practices, Energy Development, And Hydrologic Patterns

Wetzel, W, **G. Chong**, and M. Holloran. 2008. "Habitat Selection by a Non-Migratory Sage-Grouse Population in a Montane Valley." Sixth Fire Effects Symposium, 7 February 2008, Teton Science School.

Woodhouse C. (presenter), S.T. Gray, M. Hughes, K. Kipfmuller, **G.T. Pederson**, M. Salzer, J. Lukas, P.M. Brown. 2008. Interpreting and refining the climate signal in millennial-length 5-needle pine chronologies. [abstract] In: *MTNCLIM 2008 proceedings*; Silverton CO.