

***UNITED STATES FISH AND WILDLIFE SERVICE  
DIVISION OF MIGRATORY BIRD MANAGEMENT  
LAUREL, MARYLAND***



*Administrative Report - July 2002*

***PRELIMINARY ESTIMATES OF WATERFOWL HARVEST AND HUNTER  
ACTIVITY IN THE UNITED STATES DURING THE 2001 HUNTING SEASON\****

**Elwood M. Martin and Paul I. Padding**  
**Harvest Surveys Section**

***ABSTRACT:*** Duck stamp sales in 2001 were slightly below sales in 2000. United States waterfowl hunters hunted about 8% more days and bagged about 9% fewer ducks, 5% more geese and 27% fewer coots than in 2000.

---

\*The primary purpose of this report is to facilitate the prompt distribution of timely information. It is intended for administrative use only and is not for publication without the permission of the Director, United States Fish and Wildlife Service.

## INTRODUCTION and BACKGROUND

**T**his report presents estimates of waterfowl hunting activity, success, and harvest by species for the 2001 U.S. waterfowl season together with selected estimates for Canada and compares them with estimates for the 2000 season. For information on the age and sex compositions of the harvest by State, see the Administrative Report entitled "Age and Sex Composition of Ducks and Geese Bagged in the 2001 Hunting Season in Comparison with Prior Years" (July 2002). All 2000 estimates are based on audited "final" Federal duck stamp sales figures, whereas 2001 estimates are based on preliminary sales figures. In recent years in most states there is little or no change between preliminary and final figures. Because of the consolidated accounting system the Postal Service introduced on a wide scale in 1995, under which many accounting centers reported combined totals for sales at offices in two or more states, for several years it was necessary for us to estimate the among-state distribution of such sales to get more reliable sales figures for many states. This year the Postal Service was able to resume providing us with state-specific figures. With more up-to-date figures on the distribution of duck stamp sales among states, we will be able to refine our estimates of state-level stamp sales distribution (and waterfowl harvest and hunter activity) for the 1995-1999 period.

Sales outlets other than the U.S. Postal Service continue to sell an increasing proportion (now about 50%) of the Federal duck stamps. We have been sampling such sales outlets and pooling data from all sources to produce timely reports. Since 1982 we have also been collecting data on the temporal distribution of the harvest which will permit reduction of species composition biases in our Parts Collection Survey figures. Analysis of these data in more detail, together with the updated duck stamp sales figures noted above, is expected to lead to additional revisions, mostly minor, in overall estimates of hunting activity and success and larger revisions in harvest estimates for a number of species of ducks. Goose harvest estimates appear to have been relatively unaffected by species composition biases.

Hunting for Snow/Blue/Ross Geese also occurred after the waterfowl seasons in a number of Mississippi and Central Flyway states early in both 2001 and 2002 under a Conservation Order. All estimates identifiable as pertaining to goose harvest during these periods have been omitted from this report. Adjustment (reduction) factors like those used for obtaining more reliable hunting activity and harvest estimates for September teal seasons in the states for which historical data are available are lacking for those states in the Atlantic Flyway now having September teal seasons. Therefore, estimates for these seasons in these states are believed to be less reliable than other figures included here. Except as just noted, survey procedures followed are similar to those used since 1979 and documented in "Waterfowl Status Report, 1979"; Special Scientific Report--Wildlife No. 246; 1982. As usual, duck and goose harvest estimates are presented by STATE OF HARVEST while all other figures, including average harvest, are based on STATE OF DUCK STAMP PURCHASE.

The Harvest Information Program (HIP) continues on schedule and is expected to be replacing the Mail Questionnaire Survey next year. Results will be reported separately and compared with information presented here.

## RESULTS

Long-term estimates and patterns for federal duck stamp sales, active hunters, hunter-days, the total harvests of ducks (all species) and geese (all species), and the seasonal bag per hunter of ducks and geese since 1961 are shown graphically (Figures 1 through 7). The curves (locally weighted regression [lowess] lines; Cleveland and Devlin, 1988, J. Am. Stat. Assoc.) fit a pattern to the majority of the estimates and identify estimates that deviate from that pattern.

Estimates of duck harvest by species and unretrieved kill for each Flyway and the Nation are summarized in Table 1. Estimates for geese and coots are in Table 2. Estimated numbers of potential waterfowl hunters; averages and totals for days hunted and for ducks, geese, and coots harvested; and duck and goose species compositions for each State, Flyway, and the Nation are presented in Tables 3 through 7. Total duck stamp sales and indications of sales to non-hunters, active hunters

(those hunting one or more days), and successful hunters (those bagging at least one duck, goose, or coot) are also presented in Tables 3 through 7. September duck season data are summarized in Tables 8A and 8B. Estimates for other special duck and goose seasons are not shown separately.

Estimates of waterfowl harvest in Canada are included in this report to provide a more complete picture of hunting success in North America.

Table 9 summarizes total duck and goose harvests in each Province for 2000 and 2001 together with the percentage of each species in that harvest, while Table 10 presents totals by species for the U.S. and Canada together. Less detail is available for Mexico, but a 6-year study by Kramer et al. ("Waterfowl Harvest and Hunter Activity in Mexico"; 1995 Trans. 60th N. Am. Wildl. & Nat Resour. Conf.; pp 243-250) indicated that the total waterfowl harvest there averages less than 100,000 birds per year, of which about 10% are geese.

#### **Atlantic Flyway (Table 3)**

Duck stamp sales totaled 310,092 (+1% from 2000), and 1,626,300 ducks (-13%), 612,100 geese (+40%), and 12,100 coots (-37%) were harvested during 2,269,600 hunter-days (+9%). Persons buying duck stamps for hunting averaged 7.5 days afield (+6%) and bagged an average of 6.0 ducks (-14%) and 2.1 geese (+34%) each. The three most commonly harvested duck species in 2001 were mallard (25%), wood duck (22%), and green-winged teal (9%).

#### **Mississippi Flyway (Table 4)**

Duck stamp sales totaled 739,387 (-1%), and 6,630,900 ducks (-16%), 1,060,000 geese (-13%), and 103,700 coots (-21%) were harvested during 7,647,300 hunter-days (+8%). Persons buying duck stamps for hunting averaged 10.0 days afield (+8%) and bagged an average of 9.4 ducks (-15%) and 1.6 geese (-10%) each. The three most commonly harvested duck species were mallard (38%), gadwall (13%), and blue-winged teal (12%).

#### **Central Flyway (Table 5)**

Duck stamp sales totaled 364,538 (+2%), and 3,446,500 ducks (+6%), 1,189,800 geese (+19%), and 15,100 coots (-42%) were harvested during 3,043,000 hunter-days (+15%). Persons buying duck stamps for hunting averaged

8.0 days afield (+12) and bagged an average of 7.7 ducks (+6%) and 3.1 geese (+22%) each. The three most commonly harvested duck species were mallard (38%), gadwall (16%), and green-winged teal (10%).

#### **Pacific Flyway (Table 6)**

Duck stamp sales totaled 287,138 (+2%), and 2,168,200 ducks (-5%), 354,900 geese (-11%), and 11,800 coots (-35%) were harvested during 1,984,400 hunter-days (no change). Persons buying duck stamps for hunting averaged 8.1 days afield (+3%) and bagged an average of 9.3 ducks (-2%) and 1.5 geese (-9%) each. The three most commonly harvested duck species were mallard (44%), green-winged teal (14%) and wigeon (13%).

#### **Alaska (Table 7)**

Duck stamp sales totaled 10,068 (-1%), and 61,900 ducks (-12%) and 8,600 geese (+30%) were taken during 54,700 hunter-days (+3%). Persons buying duck stamps for hunting averaged 5.0 days afield (+3%) and bagged an average of 6.3 ducks (-8%) and 0.9 geese (+35%) each. The three most commonly harvested duck species were mallard (38%), wigeon (23%), and northern pintail (15%).

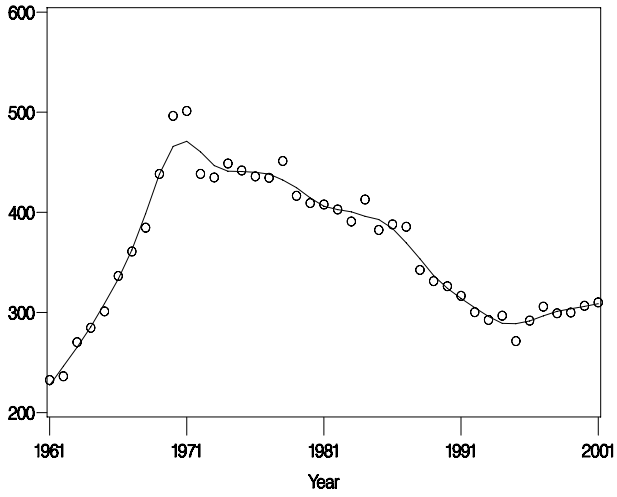
#### **United States (Table 7)**

Duck stamp sales totaled 1,659,485 (slight decrease) and 13,933,700 ducks (-9%), 3,225,300 geese (+5%), and 142,700 coots (-27%) were harvested during 14,999,000 hunter-days (+8%). Persons buying duck stamps for hunting averaged 8.8 days afield (+8%) and bagged an average of 8.4 ducks (-9%) and 2.0 geese (+6%) each. The five most commonly harvested duck species were mallard (37%), gadwall (11%), green-winged teal (10%), blue-winged/cinnamon teal (9%), and wood duck (8%).

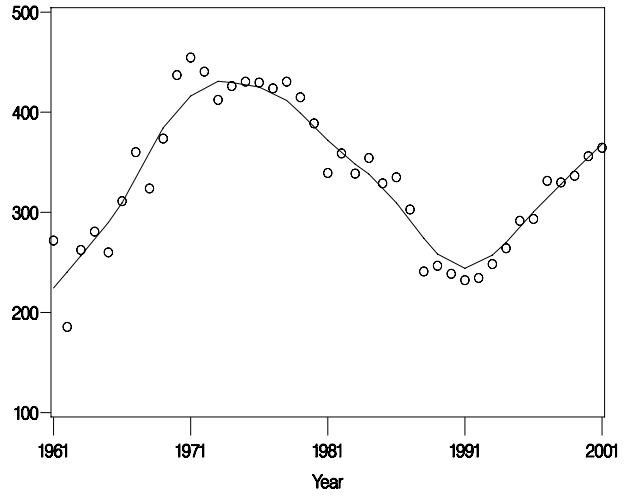
### **ACKNOWLEDGMENTS**

Major contributors to this report were Survey Clerks Pam Mathias, Barbara Martin, Peggy Powell, and Ellen Griffin, Mail Clerk Joe Duncan, Programmer Sheri Williams, and Section Secretary Susane Finucane. Fred Fiehrer and Frances Hicks of the National Biological Service's Section of Electronic Data Processing ably supplied programming and data processing support. To Khristi Wilkins, Population & Habitat Assessment Section, goes our appreciation for upgrading the graph pages.

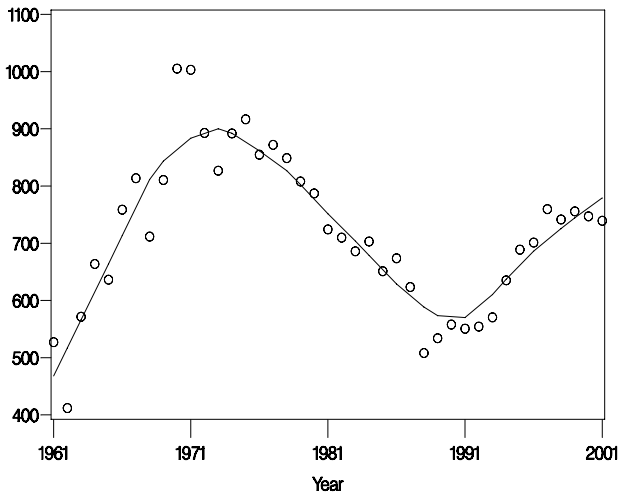
Atlantic Flyway



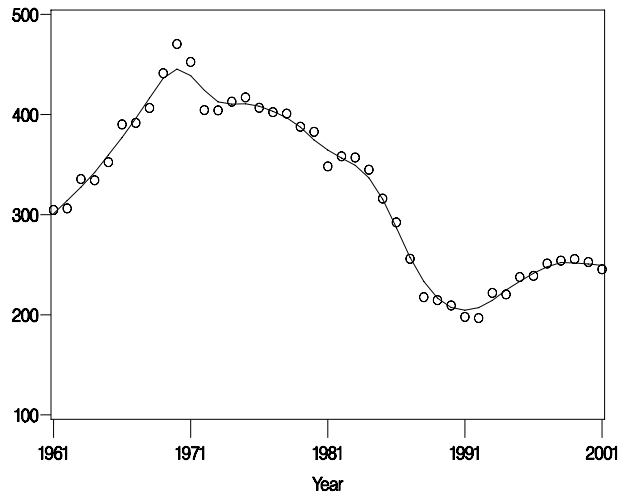
Central Flyway



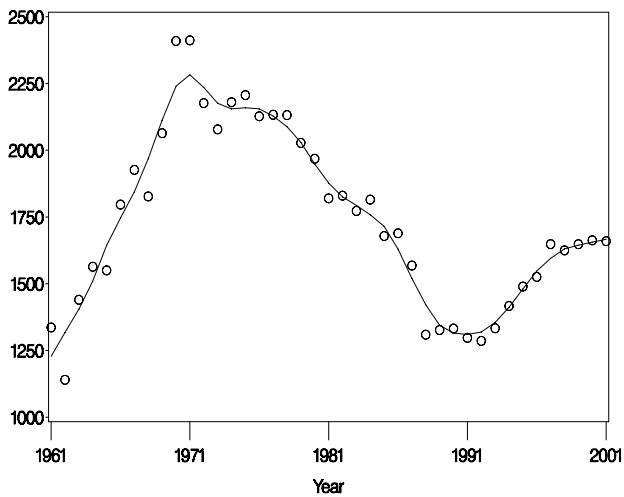
Mississippi Flyway



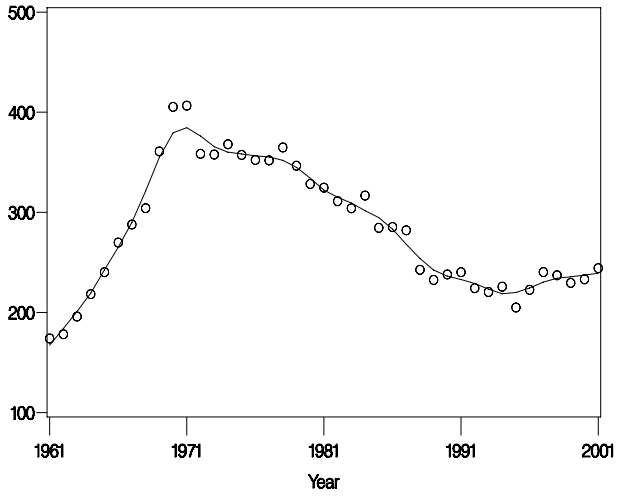
Pacific Flyway and Alaska



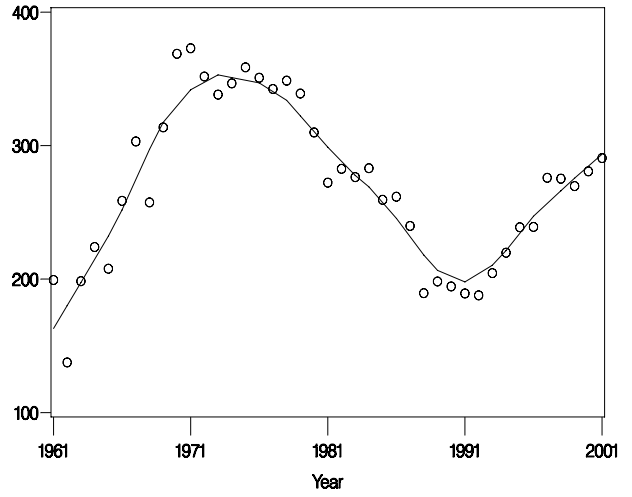
United States



Atlantic Flyway



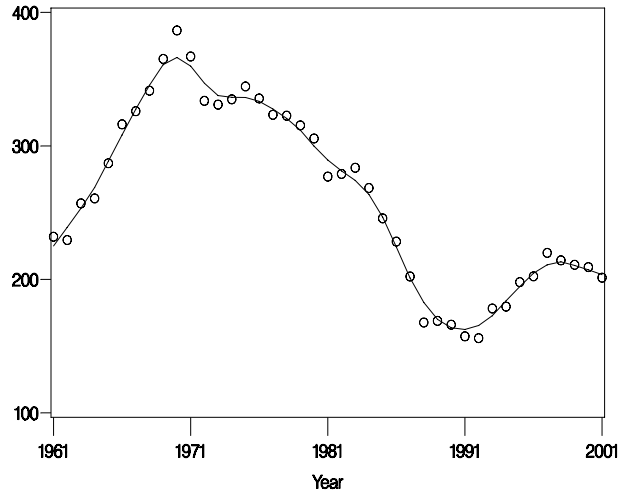
Central Flyway



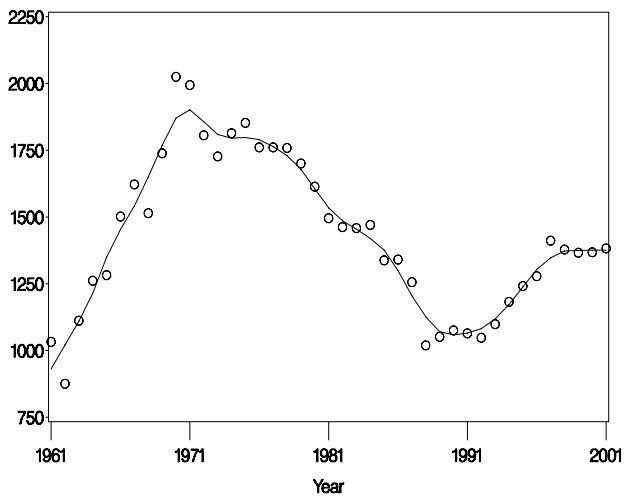
Mississippi Flyway



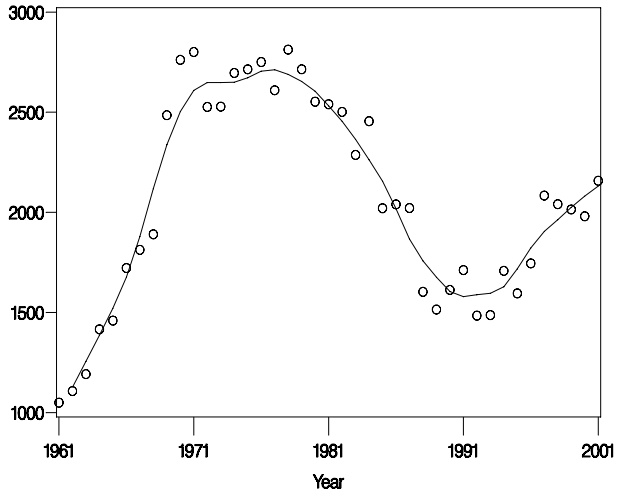
Pacific Flyway and Alaska



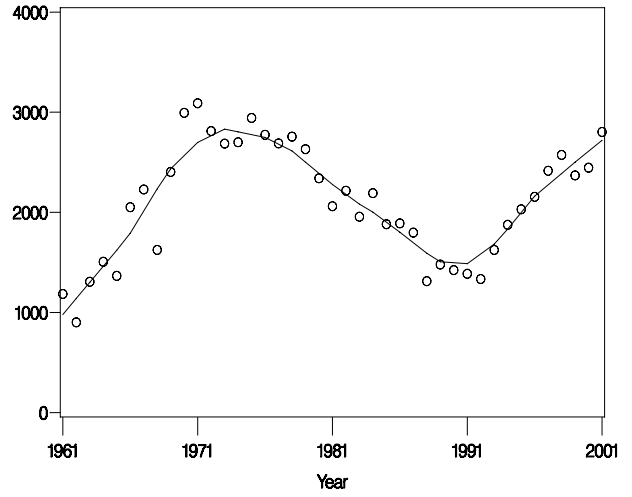
United States



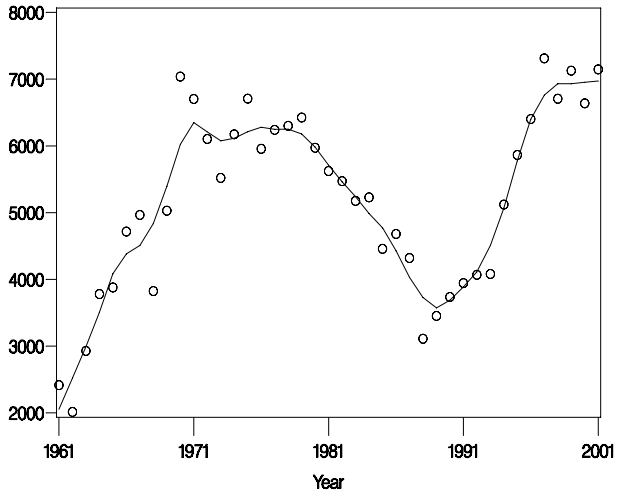
Atlantic Flyway



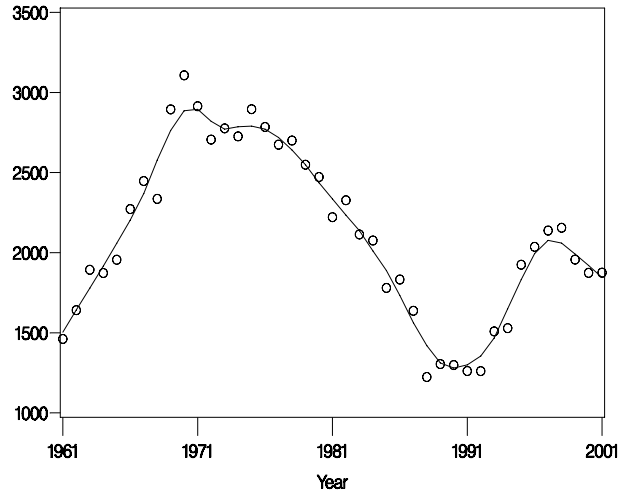
Central Flyway



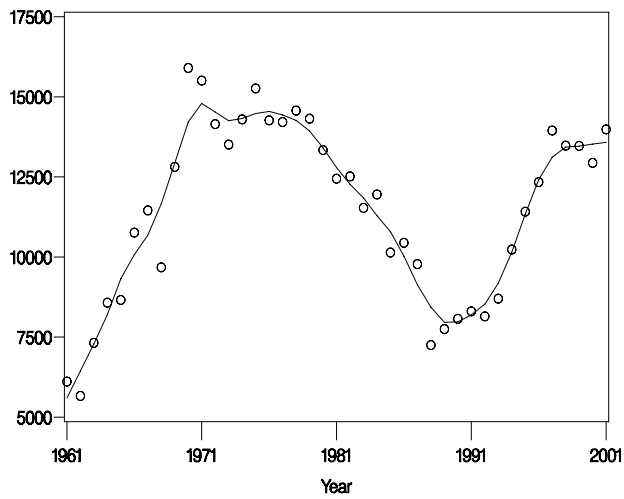
Mississippi Flyway



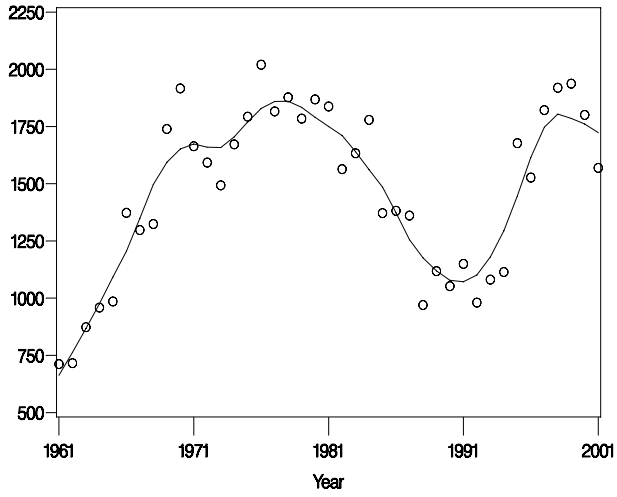
Pacific Flyway and Alaska



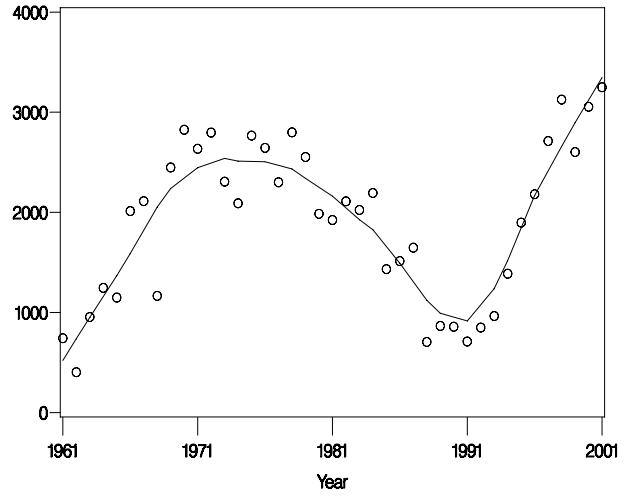
United States



Atlantic Flyway



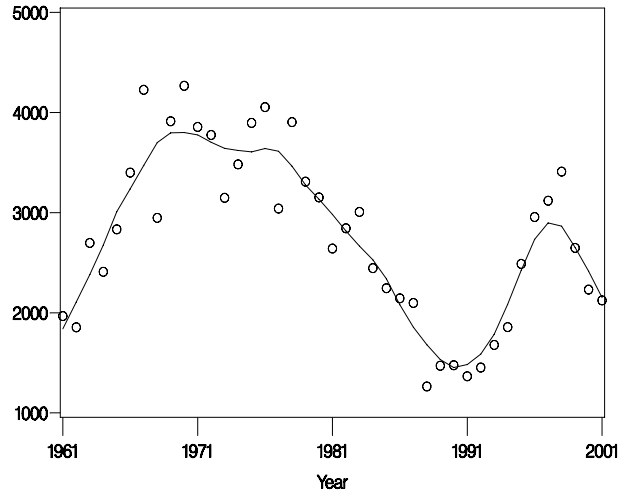
Central Flyway



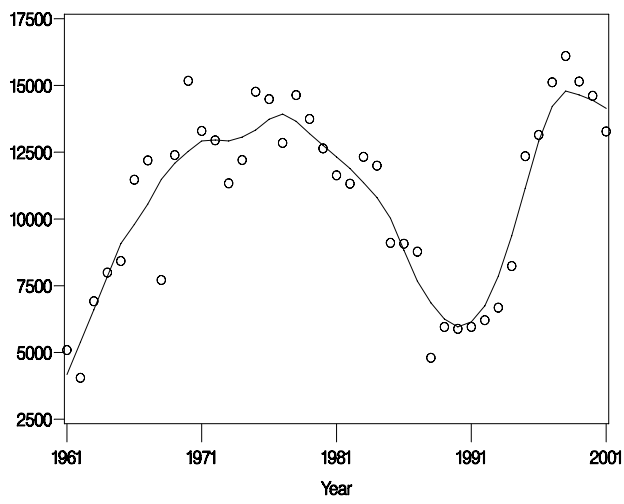
Mississippi Flyway



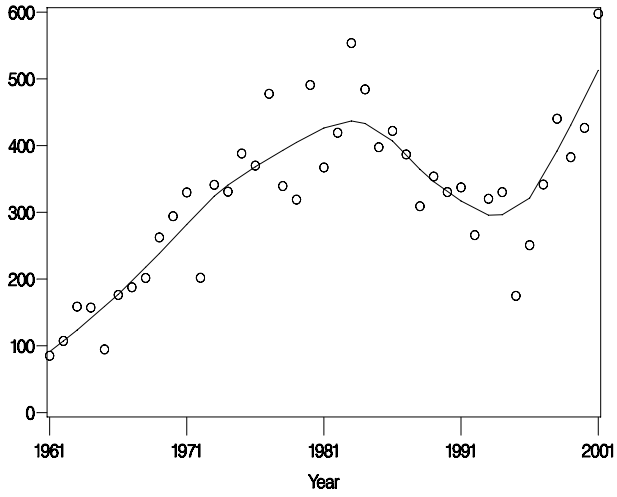
Pacific Flyway and Alaska



United States



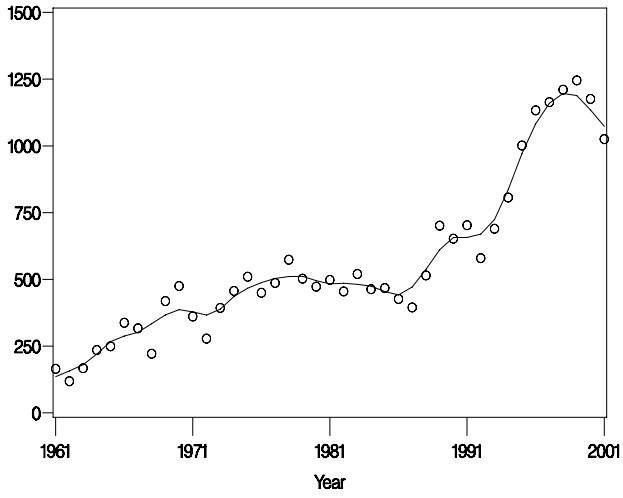
Atlantic Flyway



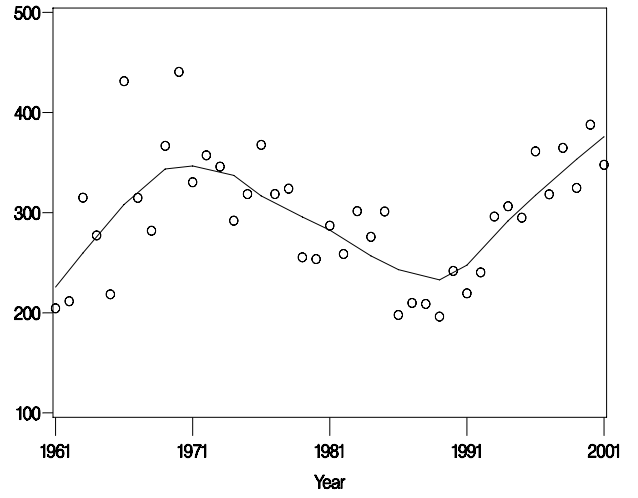
Central Flyway



Mississippi Flyway



Pacific Flyway and Alaska

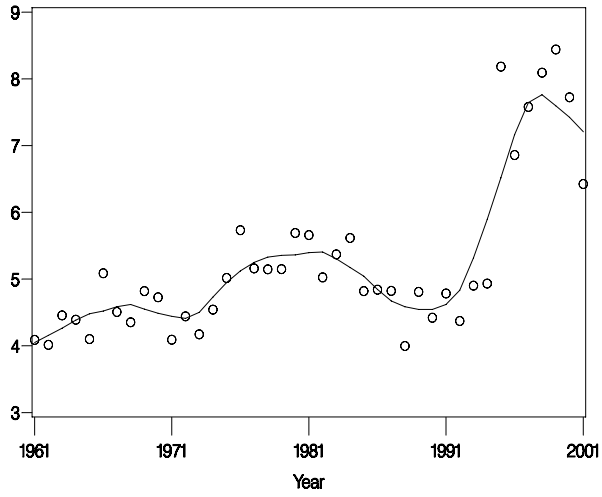


United States

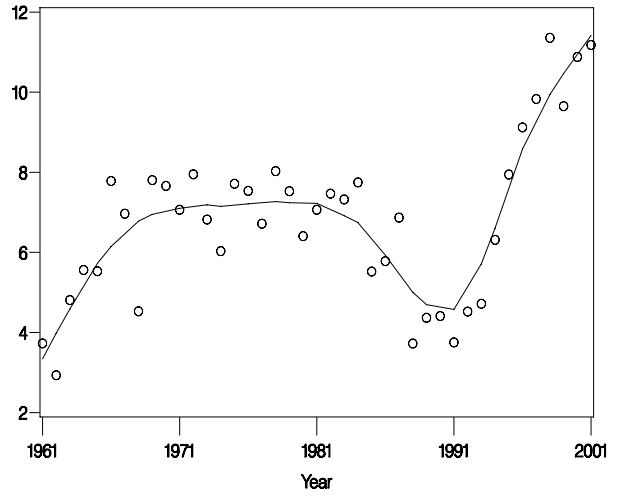




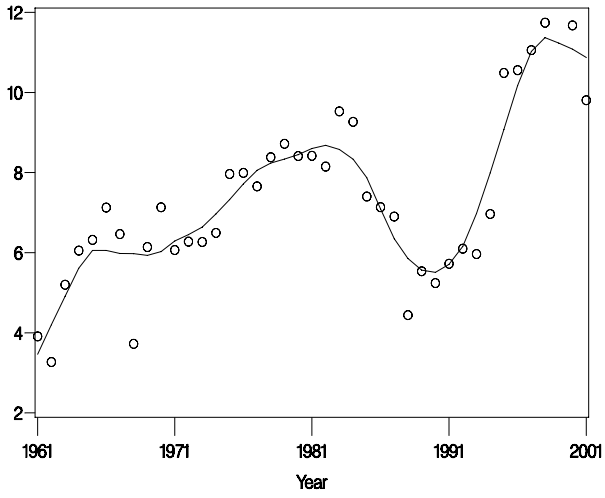
Atlantic Flyway



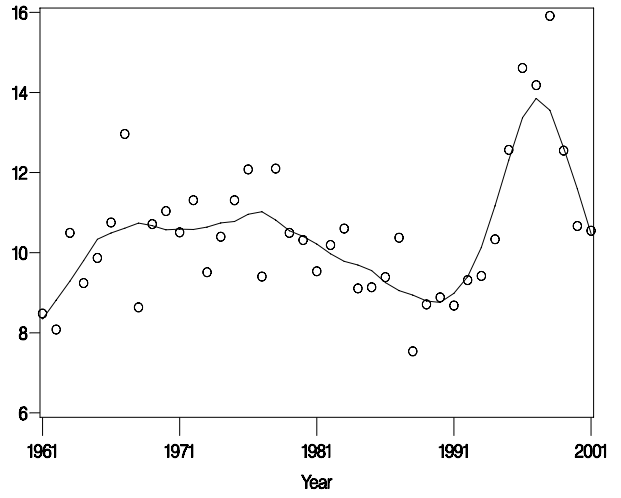
Central Flyway



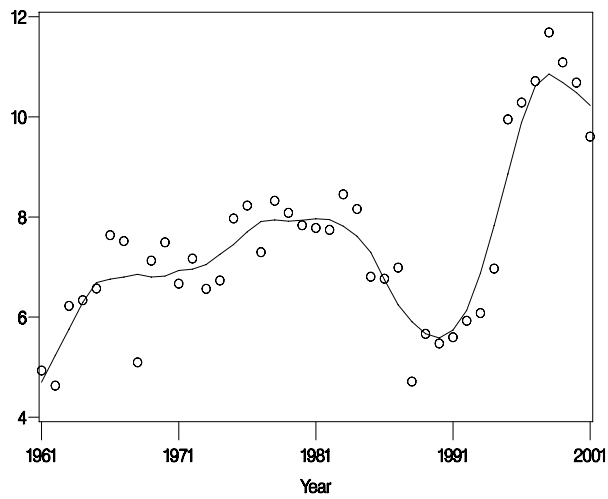
Mississippi Flyway



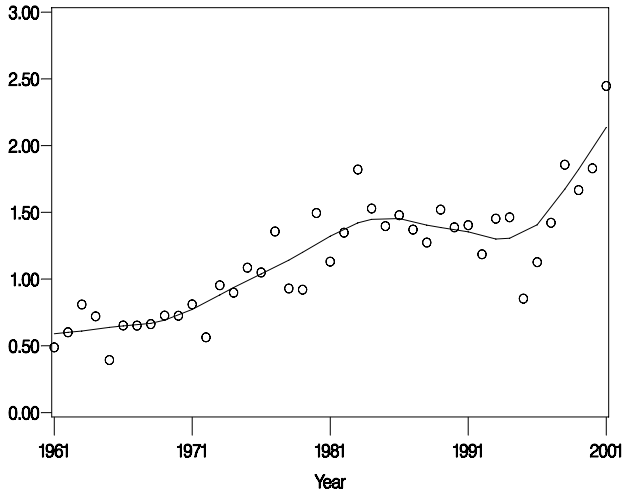
Pacific Flyway and Alaska



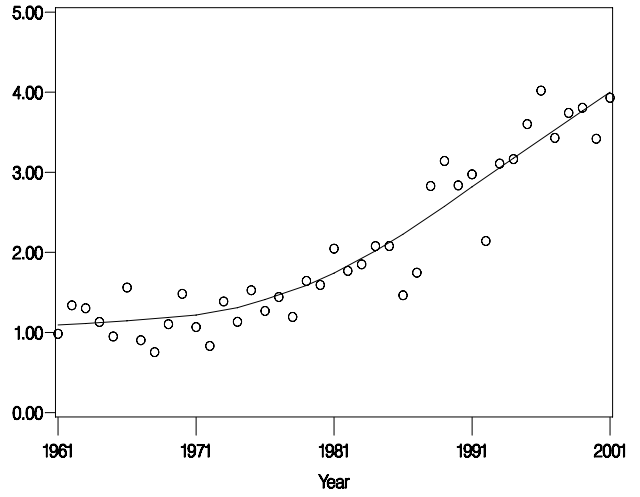
United States



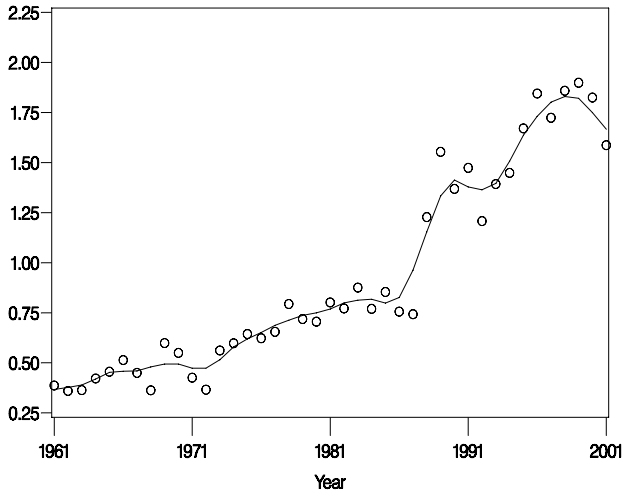
Atlantic Flyway



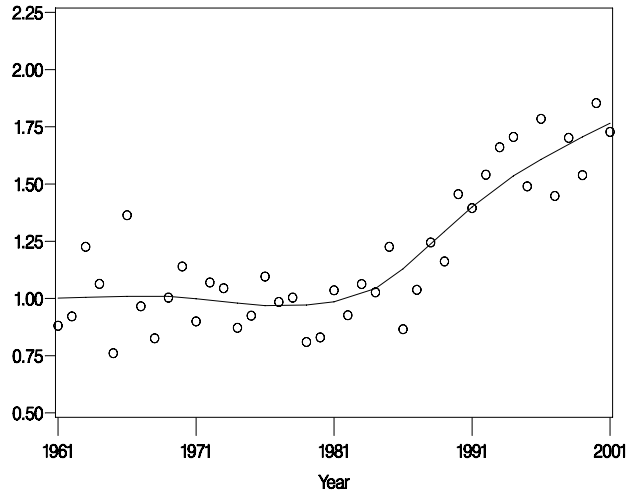
Central Flyway



Mississippi Flyway



Pacific Flyway and Alaska



United States

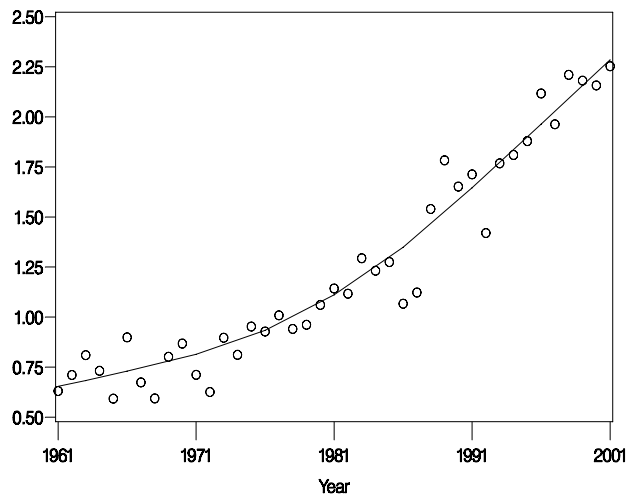


Table 1. -- Total retrieved (by species) and unretrieved duck and coot kill in the United States during the 2000 and 2001 hunting seasons (retrieved kill estimates adjusted for response bias; all estimates include kill by junior hunters).

	Season	Atlantic Flyway	Mississippi Flyway	Central Flyway	Pacific Flyway	Alaska	United States Total
<b>RETRIEVED DUCK KILL:</b>							
Mallard	2000	499,100	3,041,200	1,112,600	1,025,100	18,200	5,696,200
	2001	402,700	2,504,800	1,315,000	970,600	23,600	5,216,700
	% change	-19%	-18%	18%	-5%	30%	-8%
Domestic Mallard	2000	10,100	8,500	1,800	2,000	0	22,400
	2001	11,000	5,900	200	2,500	0	19,600
	% change	9%	-31%	-89%	25%	0%	-13%
American Black Duck	2000	127,500	52,100	0	0	0	179,600
	2001	107,600	26,200	0	0	0	133,800
	% change	-16%	-50%	0%	0%	0%	-26%
Black x Mallard hybrid	2000	17,300	9,200	200	0	0	26,700
	2001	12,600	5,900	200	0	0	18,700
	% change	-27%	-36%	0%	0%	0%	-30%
Mottled Duck	2000	9,400	40,100	11,900	0	0	61,400
	2001	12,400	49,300	16,800	0	0	78,500
	% change	32%	23%	41%	0%	0%	28%
Gadwall	2000	74,100	1,258,200	605,100	122,000	600	2,059,900
	2001	37,900	873,200	543,700	113,100	1,400	1,569,300
	% change	-49%	-31%	-10%	-7%	133%	-24%
American and Eurasian Wigeon	2000	43,500	210,100	200,700	237,300	15,300	706,800
	2001	43,300	171,600	198,100	277,800	14,000	704,800
	% change	-0%	-18%	-1%	17%	-8%	-0%
Green-winged Teal	2000	220,100	746,500	356,200	365,900	9,600	1,698,400
	2001	150,400	628,800	347,900	296,800	8,500	1,432,400
	% change	-32%	-16%	-2%	-19%	-11%	-16%
Blue-winged and Cinnamon Teal	2000	85,500	755,400	255,500	40,600	0	1,137,000
	2001	74,600	818,100	296,200	38,800	200	1,227,900
	% change	-13%	8%	16%	-4%	++	8%
Northern Shoveler	2000	19,200	220,900	111,000	121,600	3,400	476,100
	2001	19,600	258,400	149,700	141,200	2,100	571,000
	% change	2%	17%	35%	16%	-38%	20%
Northern Pintail	2000	22,400	161,500	136,600	159,200	16,900	496,600
	2001	20,000	128,900	153,700	133,300	9,300	445,100
	% change	-11%	-20%	13%	-16%	-45%	-10%
Wood Duck	2000	394,800	744,200	117,600	47,700	0	1,304,300
	2001	359,200	587,000	105,800	45,900	0	1,097,800
	% change	-9%	-21%	-10%	-4%	0%	-16%
Redhead	2000	8,100	40,200	73,100	12,800	200	134,300
	2001	8,100	45,000	85,100	11,900	0	150,100
	% change	0%	12%	16%	-7%	--	12%
Canvasback	2000	16,500	44,200	25,500	17,600	200	104,000
	2001	1,800	10,400	15,300	8,800	0	36,400
	% change	-89%	-76%	-40%	-50%	--	-65%

Table 1. -- Total retrieved (by species) and unretrieved duck and coot kill in the United States during the 2000 and 2001 hunting seasons (retrieved kill estimates adjusted for response bias; all estimates include kill by junior hunters) - continued.

	Season	Atlantic Flyway	Mississippi Flyway	Central Flyway	Pacific Flyway	Alaska	United States Total
RETRIEVED DUCK KILL (continued):							
Greater Scaup	2000	12,800	15,600	1,900	12,100	600	43,100
	2001	9,600	9,200	1,900	11,600	300	32,500
	% change	-25%	-41%	0%	-4%	-50%	-25%
Lesser Scaup	2000	32,400	207,000	85,800	24,800	700	350,700
	2001	103,800	177,900	80,000	26,800	400	388,900
	% change	220%	-14%	-7%	8%	-43%	11%
Ring-necked Duck	2000	101,900	223,500	98,700	31,000	500	455,500
	2001	98,200	202,900	82,800	34,300	400	418,600
	% change	-4%	-9%	-16%	11%	-20%	-8%
Goldeneyes	2000	11,000	12,100	7,000	19,600	3,300	53,100
	2001	7,100	18,500	8,900	14,400	900	49,900
	% change	-35%	53%	27%	-27%	-73%	-6%
Bufflehead	2000	53,300	39,000	14,000	15,800	1,000	123,100
	2001	42,800	49,800	14,300	23,800	800	131,500
	% change	-20%	28%	2%	51%	-20%	7%
Ruddy Duck	2000	9,100	5,400	6,100	2,700	0	23,300
	2001	5,700	5,500	4,500	5,300	0	21,000
	% change	-37%	2%	-26%	96%	0%	-10%
Long-tailed Duck (aka Oldsquaw)	2000	9,800	300	0	0	0	10,100
	2001	9,700	300	0	0	0	10,000
	% change	-1%	0%	0%	0%	0%	-1%
Eiders	2000	16,100	0	0	0	0	16,100
	2001	20,800	0	0	0	0	20,800
	% change	29%	0%	0%	0%	0%	29%
Scoters	2000	17,000	1,200	100	400	200	19,000
	2001	24,000	1,600	100	1,300	100	27,100
	% change	41%	33%	0%	225%	-50%	43%
Hooded Merganser	2000	41,300	36,300	8,200	4,000	100	89,900
	2001	29,200	39,600	9,000	3,900	0	81,700
	% change	-29%	9%	10%	-3%	-100%	-9%
Other Mergansers	2000	13,100	3,900	2,300	7,600	trace	26,900
	2001	12,900	6,700	2,100	5,100	0	26,800
	% change	-2%	72%	-9%	-33%	-100%	-0%
Other ducks	2000	600	600	8,200	2,700	0	12,100
	2001	900	5,700	15,200	900	0	22,600
	% change	50%	850%	85%	-67%	0%	87%
TOTAL:	2000	1,865,900	7,877,200	3,240,100	2,272,700	70,600	15,326,500
	2001	1,626,300	6,630,900	3,446,500	2,168,200	61,900	13,933,700
	% change	-13%	-16%	6%	-5%	-12%	-9%
Unretrieved Kill:	2000	333,900	1,253,800	399,900	344,300	12,100	2,344,100
	2001	294,100	1,193,200	428,300	324,300	10,300	2,250,400
	% change	-12%	-5%	7%	-6%	-15%	-4%
Total duck kill:	2000	2,199,800	9,131,000	3,640,000	2,617,000	82,700	17,670,500
	2001	1,920,400	7,824,100	3,874,800	2,492,500	72,200	16,183,900
	% change	-13%	-14%	6%	-5%	-13%	-8%

Table 2. -- Total retrieved (by species) and unretrieved goose and coot kill in the United States during the 2000 and 2001 hunting seasons (retrieved kill estimates adjusted for response bias; all estimates include kill by junior hunters).

	Season	Atlantic Flyway	Mississippi Flyway	Central Flyway	Pacific Flyway	Alaska	United States Total
<b>RETRIEVED GOOSE KILL:</b>							
Canada Goose (a)	2000	371,000	896,500	746,600	315,900	4,400	2,334,400
	2001	515,200	808,600	814,000	269,500	6,200	2,413,500
	% change	39%	-10%	9%	-15%	41%	3%
Snow Goose	2000	45,800	91,100	118,800	44,300	100	300,100
	2001	65,000	86,200	189,700	43,300	0	384,100
	% change	42%	-5%	60%	-2%	-100%	28%
Blue Goose	2000	1,200	82,500	47,200	0	0	130,900
	2001	400	77,200	76,700	200	0	154,500
	% change	-67%	-6%	63%	++	0%	18%
White-fronted Goose	2000	0	136,300	72,200	28,400	1,000	237,900
	2001	0	72,000	66,600	25,800	500	164,900
	% change	0%	-47%	-8%	-9%	-50%	-31%
Brant	2000	18,800	0	300	1,800	1,100	22,000
	2001	31,200	0	0	3,600	1,900	36,800
	% change	66%	0%	-100%	100%	73%	67%
Ross' Goose	2000	0	8,000	14,300	8,400	0	30,700
	2001	0	14,500	42,700	12,500	0	69,700
	% change	0%	81%	199%	49%	0%	127%
Other geese (b)	2000	100	1,400	0	0	100	1,500
	2001	200	1,500	200	0	0	1,800
	% change	100%	7%	++	0%	-100%	20%
<hr/>							
TOTAL	2000	436,800	1,215,800	999,300	398,800	6,600	3,057,400
	2001	612,100	1,060,000	1,189,800	354,900	8,600	3,225,300
	% change	40%	-13%	19%	-11%	30%	5%
Unretrieved kill:	2000	43,500	156,200	110,600	52,600	1,200	364,100
	2001	61,400	153,400	149,200	42,000	1,000	407,100
	% change	41%	-2%	35%	-20%	-17%	12%
Total goose kill:	2000	480,300	1,372,000	1,109,900	451,400	7,800	3,421,500
	2001	673,500	1,213,400	1,339,000	396,900	9,600	3,632,400
	% change	40%	-12%	21%	-12%	23%	6%
<hr/>							
RETRIEVED COOT KILL:	2000	19,200	130,800	26,000	18,200	trace	194,300
	2001	12,100	103,700	15,100	11,800	trace	142,700
	% change	-37%	-21%	-42%	-35%	0%	-27%
Unretrieved coot kill:	2000	2,600	20,900	7,900	3,800	100	35,200
	2001	5,000	20,800	6,400	4,300	trace	36,500
	% change	92%	-0%	-19%	13%	--	4%
Total coot kill:	2000	21,800	151,700	33,800	22,000	trace	229,400
	2001	17,100	124,500	21,400	16,100	100	179,200
	% change	-22%	-18%	-37%	-27%	++	-22%

(a) Includes all subspecies and races.

(b) Includes miscellaneous domestic and hybrid geese.

TABLE 3. --PERCENTAGE SPECIES COMPOSITION OF WATERFOWL HARVESTED, TOTAL NUMBERS HARVESTED, AND ADULT HUNTER STATISTICS IN THE ATLANTIC FLYWAY DURING THE 2000 AND 2001 HUNTING SEASONS.

	CONNECTICUT		DELAWARE		FLORIDA		GEORGIA	
	2000	2001	2000	2001	2000	2001	2000	2001
<b>DUCK SPECIES COMPOSITION (%)</b>								
MALLARD	43.48	44.39	23.36	31.85	0.39	0.75	12.40	12.62
DOMESTIC MALLARD	1.48	0.34	0.29	0.41	0.06	0.07	0.76	0.13
BLACK DUCK	13.34	11.74	13.42	6.68	0.10	0.08	0.36	0.18
BLACK X MALLARD	0.99	1.03	2.00	0.29	0.00	0.00	0.10	0.00
MOTTLED DUCK	0.00	0.00	0.00	0.00	5.43	6.52	0.19	0.13
GADWALL	3.18	1.03	4.62	3.47	2.38	0.24	5.33	3.62
AMERICAN WIGEON	2.78	2.41	0.95	1.95	1.49	1.01	0.30	1.81
GREEN-WINGED TEAL	5.37	4.47	34.64	29.24	10.21	5.76	7.15	5.05
BLUE-WINGED/CINNAMON TEAL	0.00	0.00	2.68	1.73	31.74	21.83	5.36	3.68
NORTHERN SHOVELER	0.00	0.00	4.31	2.37	2.69	3.25	0.63	0.44
PINTAIL	0.00	0.34	1.93	3.06	0.88	1.37	0.07	0.44
WOOD DUCK	6.16	18.81	6.45	11.75	14.38	12.42	53.01	55.18
REDHEAD	0.00	0.00	0.00	0.00	0.63	1.50	0.07	0.39
CANVASBACK	1.19	0.34	0.00	0.00	0.31	0.00	0.30	0.16
GREATER SCAUP	0.40	0.00	0.00	1.20	0.13	1.07	0.07	0.13
LESSER SCAUP	0.00	0.00	0.29	0.35	3.52	14.46	1.40	3.82
RING-NECKED DUCK	0.20	0.69	0.29	0.27	19.80	27.39	9.87	8.80
GOLDENEYES	0.60	0.34	0.00	0.00	0.13	0.00	0.00	0.00
BUFFLEHEAD	5.17	1.21	2.62	3.86	0.13	0.25	0.27	0.00
RUDDY DUCK	0.20	0.00	0.58	0.14	2.74	0.62	0.32	0.71
LONG-TAILED DUCK	8.91	9.41	0.15	0.00	0.00	0.00	0.00	0.00
EIDERS	0.00	0.00	0.00	0.00	0.00	0.00	0.00	0.00
SCOTERS	0.00	0.00	0.00	0.00	0.00	0.00	0.00	0.00
HOODED MERGANSERS	1.39	0.69	0.69	0.14	2.61	1.07	2.05	2.57
OTHER MERGANSERS	5.17	2.75	0.73	1.09	0.00	0.10	0.00	0.13
OTHER DUCKS	0.00	0.00	0.00	0.14	0.27	0.25	0.00	0.00
TOTAL	100.00	100.00	100.00	100.00	100.00	100.00	100.00	100.00
DUCK HARVEST (RETRIEVED KILL)	19,514	20,487	70,999	45,282	143,876	152,087	136,283	95,668
PERCENT CHANGE		5%		-36%		6%		-30%
SEASONAL DUCK HARVEST PER ADULT HUNTER	5.08	3.64	10.72	5.07	11.28	10.99	8.66	7.49
PERCENT CHANGE		-28%		-53%		-3%		-14%
<b>GOOSE SPECIES COMPOSITION (%)</b>								
CANADA GOOSE	97.44	94.89	6.58	35.12	0.00	100.00	97.40	100.00
SNOW GOOSE	0.14	0.00	88.48	64.08	0.00	0.00	0.00	0.00
BLUE GOOSE	0.00	0.00	1.40	0.80	0.00	0.00	2.60	0.00
WHITE-FRONTED GOOSE	0.00	0.00	0.00	0.00	0.00	0.00	0.00	0.00
BRANT	2.41	5.11	3.54	0.00	0.00	0.00	0.00	0.00
OTHER GEESE	0.00	0.00	0.00	0.00	0.00	0.00	0.00	0.00
TOTAL	100.00	100.00	100.00	100.00	0.00	0.00	0.00	0.00
GOOSE HARVEST (RETRIEVED KILL)	13,710	17,166	14,802	42,278	0	635	6,912	11,072
PERCENT CHANGE		25%		186%		++		60%
SEASONAL GOOSE HARVEST PER ADULT HUNTER	2.35	2.42	1.49	4.25	0.20	0.23	0.52	0.83
PERCENT CHANGE		3%		185%		15%		60%
<b>COOT HARVEST (RETRIEVED KILL)</b>								
COOT HARVEST (RETRIEVED KILL)	17	30	0	0	1,635	2,683	406	2,572
PERCENT CHANGE		76%		0%		64%		533%
SEASONAL COOT HARVEST PER ADULT HUNTER	0.00	0.01	0.00	0.00	0.09	0.15	0.02	0.10
PERCENT CHANGE		++		0%		67%		400%
<b>TOTAL HUNTER DAYS</b>								
TOTAL HUNTER DAYS	35,440	42,372	47,231	60,523	117,391	127,350	165,226	180,666
PERCENT CHANGE		20%		28%		8%		9%
DAYS PER ADULT HUNTER	8.73	6.92	7.03	8.15	6.81	7.37	6.81	7.52
PERCENT CHANGE		-21%		16%		8%		10%
<b>TOTAL DUCK STAMPS SOLD</b>								
TOTAL DUCK STAMPS SOLD	4,292	6,348	6,832	7,422	20,097	19,106	23,771	23,747
PERCENT CHANGE		48%		9%		-5%		-0%
PERCENT SOLD TO NON-HUNTERS	10.12	8.25	6.48	4.87	18.43	14.06	2.99	3.80
<b>TOTAL ADULT HUNTERS (POTENTIAL)</b>								
TOTAL ADULT HUNTERS (POTENTIAL)	3,858	5,824	6,389	7,061	16,393	16,420	23,060	22,845
PERCENT CHANGE		51%		11%		0%		-1%
PERCENT ACTIVE ADULT HUNTERS	88.4	87.7	67.0	78.4	89.7	85.8	81.0	89.4
PERCENT SUCCESSFUL ADULT HUNTERS	69.3	66.8	59.5	67.1	73.5	69.3	64.7	73.6
<b>SAMPLE SIZES</b>								
DUCK WINGS	502	295	711	647	1,375	1,384	1,142	596
GOOSE TAILS	605	460	345	474	0	2	77	55
QUESTIONNAIRES	138	236	91	134	184	226	242	406

TABLE 3. --PERCENTAGE SPECIES COMPOSITION OF WATERFOWL HARVESTED, TOTAL NUMBERS HARVESTED, AND ADULT HUNTER STATISTICS IN THE ATLANTIC FLYWAY DURING THE 2000 AND 2001 HUNTING SEASONS.

	MAINE		MARYLAND		MASSACHUSETTS		NEW HAMPSHIRE	
	2000	2001	2000	2001	2000	2001	2000	2001
<b>DUCK SPECIES COMPOSITION (%)</b>								
MALLARD	15.21	18.11	33.93	35.32	36.09	26.87	46.41	40.66
DOMESTIC MALLARD	0.33	0.44	0.80	1.87	0.36	0.25	0.58	0.22
BLACK DUCK	12.34	14.40	8.60	7.06	22.68	19.79	17.97	12.13
BLACK X MALLARD	2.43	1.08	1.15	0.91	1.60	2.15	4.04	0.89
MOTTLED DUCK	0.00	0.00	0.00	0.00	0.00	0.00	0.00	0.00
GADWALL	0.00	0.00	3.92	2.58	0.59	0.64	0.58	0.00
AMERICAN WIGEON	0.23	0.11	3.26	3.81	0.52	0.52	0.29	0.00
GREEN-WINGED TEAL	15.14	6.32	12.71	15.26	5.18	6.69	5.22	4.53
BLUE-WINGED/CINNAMON TEAL	0.36	1.02	1.33	4.37	0.00	0.00	0.58	0.22
NORTHERN SHOVELER	0.00	0.00	0.73	0.40	0.00	0.00	0.00	0.00
PINTAIL	0.60	0.17	2.01	1.97	0.00	0.34	0.58	0.22
WOOD DUCK	17.46	18.23	5.18	9.99	8.14	10.62	13.65	28.88
REDHEAD	0.00	0.00	0.55	0.10	0.00	0.17	0.00	0.00
CANVASBACK	0.00	0.00	3.88	0.40	0.12	0.17	0.00	0.00
GREATER SCAUP	0.09	0.00	2.85	0.47	0.07	0.00	0.00	0.67
LESSER SCAUP	0.23	0.00	5.09	1.70	0.00	0.00	0.00	0.22
RING-NECKED DUCK	1.46	1.38	0.38	0.41	0.40	0.76	0.29	1.12
GOLDENEYES	1.18	2.18	0.58	0.23	0.25	0.29	0.70	0.00
BUFFLEHEAD	3.90	4.93	4.71	6.56	11.95	10.28	0.58	1.74
RUDDY DUCK	0.00	0.00	0.18	0.47	0.00	0.00	0.00	0.00
LONG-TAILED DUCK	1.46	2.05	1.88	2.11	0.40	1.01	0.07	0.45
EIDERS	21.04	17.08	0.00	0.00	7.03	14.54	1.13	0.79
SCOTERS	2.46	6.86	4.83	3.09	4.02	1.93	3.80	1.82
HOODED MERGANSERS	2.28	3.75	0.70	0.62	0.10	1.26	1.39	4.12
OTHER MERGANSERS	1.80	1.90	0.66	0.20	0.50	1.71	2.15	1.30
OTHER DUCKS	0.00	0.00	0.11	0.10	0.00	0.00	0.00	0.00
TOTAL	100.00	100.00	100.00	100.00	100.00	100.00	100.00	100.00
DUCK HARVEST (RETRIEVED KILL)	55,430	82,674	195,143	160,527	56,319	33,848	11,971	18,244
PERCENT CHANGE		49%		-18%		-40%		52%
SEASONAL DUCK HARVEST PER ADULT HUNTER	4.74	7.23	8.31	5.87	7.32	4.20	3.11	4.11
PERCENT CHANGE		53%		-29%		-43%		32%
<b>GOOSE SPECIES COMPOSITION (%)</b>								
CANADA GOOSE	94.94	98.82	73.08	81.27	97.60	89.16	97.44	98.04
SNOW GOOSE	5.06	0.26	23.84	18.28	0.00	0.17	0.00	1.47
BLUE GOOSE	0.00	0.00	1.23	0.00	0.00	0.00	0.00	0.49
WHITE-FRONTED GOOSE	0.00	0.00	0.00	0.00	0.00	0.00	0.00	0.00
BRANT	0.00	0.93	1.85	0.45	2.40	10.66	2.56	0.00
OTHER GEESE	0.00	0.00	0.00	0.00	0.00	0.00	0.00	0.00
TOTAL	100.00	100.00	100.00	100.00	100.00	100.00	100.00	100.00
GOOSE HARVEST (RETRIEVED KILL)	10,146	9,395	52,192	95,565	14,502	12,996	6,704	4,896
PERCENT CHANGE		-7%		83%		-10%		-27%
SEASONAL GOOSE HARVEST PER ADULT HUNTER	1.17	0.96	2.53	3.71	2.25	1.76	1.25	0.84
PERCENT CHANGE		-18%		47%		-22%		-33%
<b>COOT HARVEST (RETRIEVED KILL)</b>								
COOT HARVEST (RETRIEVED KILL)	27	111	105	0	0	93	23	21
PERCENT CHANGE		311%		-100%		++		-9%
SEASONAL COOT HARVEST PER ADULT HUNTER	0.00	0.01	0.00	0.00	0.00	0.01	0.00	0.00
PERCENT CHANGE		++		0%		++		0%
<b>TOTAL HUNTER DAYS</b>								
TOTAL HUNTER DAYS	62,773	85,473	164,114	242,414	70,857	70,511	29,462	33,253
PERCENT CHANGE		36%		48%		-0%		13%
DAYS PER ADULT HUNTER	5.87	7.75	7.01	8.03	8.23	7.70	5.97	6.63
PERCENT CHANGE		32%		15%		-6%		11%
<b>TOTAL DUCK STAMPS SOLD</b>								
TOTAL DUCK STAMPS SOLD	10,810	11,041	25,775	32,567	9,382	9,767	5,132	5,150
PERCENT CHANGE		2%		26%		4%		0%
PERCENT SOLD TO NON-HUNTERS	5.92	5.06	13.61	11.87	12.77	10.83	8.55	7.40
<b>TOTAL ADULT HUNTERS (POTENTIAL)</b>								
TOTAL ADULT HUNTERS (POTENTIAL)	10,170	10,482	22,267	28,701	8,184	8,709	4,693	4,769
PERCENT CHANGE		3%		29%		6%		2%
PERCENT ACTIVE ADULT HUNTERS	81.1	89.6	83.1	86.4	84.9	83.1	86.7	78.9
PERCENT SUCCESSFUL ADULT HUNTERS	64.3	72.7	70.8	74.5	74.8	64.2	60.4	60.3
<b>SAMPLE SIZES</b>								
DUCK WINGS	777	864	1,810	1,343	605	759	410	401
GOOSE TAILS	100	150	330	904	389	563	137	171
QUESTIONNAIRES	227	395	246	356	53	307	128	237

TABLE 3. --PERCENTAGE SPECIES COMPOSITION OF WATERFOWL HARVESTED, TOTAL NUMBERS HARVESTED, AND ADULT HUNTER STATISTICS IN THE ATLANTIC FLYWAY DURING THE 2000 AND 2001 HUNTING SEASONS.

	NEW JERSEY		NEW YORK		NORTH CAROLINA		PENNSYLVANIA	
	2000	2001	2000	2001	2000	2001	2000	2001
<b>DUCK SPECIES COMPOSITION (%)</b>								
MALLARD	30.57	26.81	45.25	41.94	22.24	13.25	53.17	49.15
DOMESTIC MALLARD	0.70	0.11	0.41	0.51	0.52	0.84	1.57	1.13
BLACK DUCK	18.23	26.09	13.50	11.97	2.26	1.10	5.37	5.22
BLACK X MALLARD	1.35	2.81	1.79	1.45	0.31	0.25	1.36	0.54
MOTTLED DUCK	0.00	0.00	0.00	0.00	0.00	0.16	0.00	0.00
GADWALL	1.72	0.74	1.86	1.01	5.61	2.84	0.69	0.48
AMERICAN WIGEON	1.02	0.65	1.62	2.00	3.26	4.95	0.54	0.59
GREEN-WINGED TEAL	22.07	18.14	6.87	6.58	12.22	8.79	4.18	3.16
BLUE-WINGED/CINNAMON TEAL	0.05	0.30	0.65	0.55	2.31	3.87	0.23	0.83
NORTHERN SHOVELER	0.15	2.11	0.06	0.16	1.16	1.38	0.20	0.25
PINTAIL	2.37	2.13	1.24	1.22	1.90	2.47	0.38	0.31
WOOD DUCK	7.03	7.52	10.23	13.96	31.16	31.35	25.42	29.49
REDHEAD	0.00	0.00	1.14	0.65	0.59	1.07	0.00	0.08
CANVASBACK	0.55	0.00	0.57	0.12	0.74	0.08	0.04	0.00
GREATER SCAUP	1.21	0.31	1.01	1.39	0.48	0.64	0.11	0.55
LESSER SCAUP	0.35	0.11	0.65	0.70	2.81	19.52	0.33	1.14
RING-NECKED DUCK	0.25	0.43	0.71	2.93	6.31	2.99	0.34	1.10
GOLDENEYES	0.51	0.09	3.47	1.63	0.00	0.00	0.63	0.17
BUFFLEHEAD	7.50	5.74	3.88	2.78	1.85	1.85	1.78	2.05
RUDDY DUCK	0.41	0.61	0.02	0.07	0.85	1.03	0.30	0.22
LONG-TAILED DUCK	0.16	0.36	1.11	0.84	0.07	0.00	0.05	0.06
EIDERS	0.00	0.00	0.19	0.00	0.00	0.00	0.00	0.00
SCOTERS	0.28	0.28	0.76	4.85	0.05	0.62	0.00	0.45
HOODED MERGANSERS	2.50	3.23	1.04	0.40	3.23	0.95	1.74	2.21
OTHER MERGANSERS	1.03	1.23	1.96	2.28	0.08	0.00	1.57	0.77
OTHER DUCKS	0.00	0.21	0.00	0.00	0.00	0.00	0.00	0.06
TOTAL	100.00	100.00	100.00	100.00	100.00	100.00	100.00	100.00
DUCK HARVEST (RETRIEVED KILL)	86,599	82,977	190,463	196,301	318,790	206,805	112,584	129,083
PERCENT CHANGE		-4%		3%		-35%		15%
SEASONAL DUCK HARVEST PER ADULT HUNTER	7.27	5.58	4.58	4.49	9.87	7.72	2.55	2.89
PERCENT CHANGE		-23%		-2%		-22%		13%
<b>GOOSE SPECIES COMPOSITION (%)</b>								
CANADA GOOSE	65.45	56.65	90.12	93.33	95.65	99.46	91.49	97.25
SNOW GOOSE	20.93	15.18	1.07	2.17	1.37	0.54	8.44	2.59
BLUE GOOSE	0.00	0.00	0.05	0.05	0.00	0.00	0.08	0.00
WHITE-FRONTED GOOSE	0.00	0.00	0.00	0.00	0.00	0.00	0.00	0.00
BRANT	13.61	28.18	8.66	4.44	2.98	0.00	0.00	0.06
OTHER GEESE	0.00	0.00	0.10	0.00	0.00	0.00	0.00	0.11
TOTAL	100.00	100.00	100.00	100.00	100.00	100.00	100.00	100.00
GOOSE HARVEST (RETRIEVED KILL)	36,963	76,199	74,662	104,517	30,564	30,334	89,101	129,406
PERCENT CHANGE		106%		40%		-1%		45%
SEASONAL GOOSE HARVEST PER ADULT HUNTER	2.92	5.05	1.82	2.46	0.96	0.99	1.88	2.76
PERCENT CHANGE		73%		35%		3%		47%
<b>COOT HARVEST (RETRIEVED KILL)</b>								
COOT HARVEST (RETRIEVED KILL)	45	0	614	515	11,176	2,565	1,288	775
PERCENT CHANGE		-100%		-16%		-77%		-40%
SEASONAL COOT HARVEST PER ADULT HUNTER	0.00	0.00	0.01	0.01	0.32	0.08	0.02	0.01
PERCENT CHANGE		0%		0%		-75%		-50%
<b>TOTAL HUNTER DAYS</b>								
TOTAL HUNTER DAYS	103,798	119,092	241,792	264,173	285,661	246,016	312,978	368,685
PERCENT CHANGE		15%		9%		-14%		18%
DAYS PER ADULT HUNTER	8.99	9.90	5.94	6.35	8.33	7.92	6.04	7.05
PERCENT CHANGE		10%		7%		-5%		17%
<b>TOTAL DUCK STAMPS SOLD</b>								
TOTAL DUCK STAMPS SOLD	12,632	12,643	42,024	42,365	34,459	31,140	52,602	52,616
PERCENT CHANGE		0%		1%		-10%		0%
PERCENT SOLD TO NON-HUNTERS	13.08	9.57	7.82	6.57	5.40	5.14	6.37	5.45
<b>TOTAL ADULT HUNTERS (POTENTIAL)</b>								
TOTAL ADULT HUNTERS (POTENTIAL)	10,980	11,433	38,738	39,582	32,598	29,539	49,251	49,748
PERCENT CHANGE		4%		2%		-9%		1%
PERCENT ACTIVE ADULT HUNTERS	87.8	85.7	78.5	78.6	88.6	87.1	80.1	84.5
PERCENT SUCCESSFUL ADULT HUNTERS	73.7	71.3	60.3	61.2	76.4	69.9	60.2	63.3
<b>SAMPLE SIZES</b>								
DUCK WINGS	981	862	2,339	2,075	1,787	1,460	1,573	1,606
GOOSE TAILS	420	633	984	1,374	359	254	1,270	1,802
QUESTIONNAIRES	139	210	941	1,606	343	808	858	1,628



TABLE 3. --PERCENTAGE SPECIES COMPOSITION OF WATERFOWL HARVESTED, TOTAL NUMBERS HARVESTED, AND ADULT HUNTER STATISTICS IN THE ATLANTIC FLYWAY DURING THE 2000 AND 2001 HUNTING SEASONS.

	RHODE ISLAND		SOUTH CAROLINA		VERMONT		VIRGINIA	
	2000	2001	2000	2001	2000	2001	2000	2001
<b>DUCK SPECIES COMPOSITION (%)</b>								
MALLARD	29.85	16.97	14.73	11.00	48.37	52.83	33.92	33.63
DOMESTIC MALLARD	0.21	0.14	0.23	0.77	0.33	0.23	0.54	0.66
BLACK DUCK	22.80	13.48	0.76	1.02	13.99	10.33	7.32	8.14
BLACK X MALLARD	3.40	1.98	0.17	0.13	1.24	2.46	1.39	1.35
MOTTLED DUCK	0.00	0.00	0.50	0.79	0.00	0.00	0.00	0.00
GADWALL	1.70	0.64	3.77	5.16	0.18	0.12	10.91	5.50
AMERICAN WIGEON	8.20	2.71	5.01	4.95	0.08	1.03	2.16	3.52
GREEN-WINGED TEAL	1.28	3.92	16.15	10.01	11.28	7.48	7.67	11.33
BLUE-WINGED/CINNAMON TEAL	0.00	0.28	6.24	6.51	0.55	0.30	1.45	1.81
NORTHERN SHOVELER	0.00	0.00	1.56	2.70	0.48	0.00	1.02	0.48
PINTAIL	0.21	1.16	1.04	0.39	0.74	1.86	0.94	1.28
WOOD DUCK	5.95	2.85	35.32	30.59	14.16	12.87	11.37	17.50
REDHEAD	0.00	0.00	0.35	0.59	0.00	0.23	0.64	0.00
CANVASBACK	1.51	0.00	0.27	0.06	0.00	0.00	1.79	0.29
GREATER SCAUP	4.28	2.20	0.30	0.26	0.00	1.17	0.48	0.20
LESSER SCAUP	0.64	0.78	0.41	10.60	0.00	0.35	1.91	4.47
RING-NECKED DUCK	0.00	0.50	9.19	10.91	2.94	2.01	6.81	3.43
GOLDENEYES	1.18	2.43	0.00	0.00	0.78	3.50	0.36	0.10
BUFFLEHEAD	8.31	8.74	0.47	0.41	2.52	0.70	4.18	3.02
RUDDY DUCK	0.21	0.69	0.06	0.00	0.00	0.36	0.15	0.00
LONG-TAILED DUCK	0.00	0.16	0.00	0.00	0.44	0.24	0.38	0.17
EIDERS	0.00	14.24	0.00	0.00	0.00	0.23	0.00	0.00
SCOTERS	2.98	6.48	0.00	0.00	0.00	0.35	0.72	0.00
HOODED MERGANSERS	3.02	4.48	3.47	3.09	1.02	0.48	3.08	2.78
OTHER MERGANSERS	4.27	15.17	0.00	0.06	0.91	0.87	0.78	0.30
OTHER DUCKS	0.00	0.00	0.00	0.00	0.00	0.00	0.00	0.06
TOTAL	100.00	100.00	100.00	100.00	100.00	100.00	100.00	100.00
DUCK HARVEST (RETRIEVED KILL)	15,262	11,184	258,969	254,056	25,399	26,937	161,865	103,623
PERCENT CHANGE		-27%		-2%		6%		-36%
SEASONAL DUCK HARVEST PER ADULT HUNTER	8.85	4.86	11.52	11.67	5.15	6.08	7.15	4.70
PERCENT CHANGE		-45%		1%		18%		-34%
<b>GOOSE SPECIES COMPOSITION (%)</b>								
CANADA GOOSE	97.94	86.72	100.00	100.00	46.50	64.49	91.98	94.07
SNOW GOOSE	1.03	0.00	0.00	0.00	52.54	31.92	1.84	2.35
BLUE GOOSE	0.00	0.00	0.00	0.00	0.96	0.00	0.00	0.00
WHITE-FRONTED GOOSE	0.00	0.00	0.00	0.00	0.00	0.00	0.00	0.00
BRANT	1.03	13.28	0.00	0.00	0.00	3.59	6.17	3.44
OTHER GEESE	0.00	0.00	0.00	0.00	0.00	0.00	0.00	0.14
TOTAL	100.00	100.00	0.00	0.00	100.00	100.00	100.00	100.00
GOOSE HARVEST (RETRIEVED KILL)	2,079	3,438	10,859	14,566	3,838	5,830	65,404	46,579
PERCENT CHANGE		65%		34%		52%		-29%
SEASONAL GOOSE HARVEST PER ADULT HUNTER	1.50	1.98	0.54	0.74	1.18	1.85	2.79	1.97
PERCENT CHANGE		32%		37%		57%		-29%
<b>COOT HARVEST (RETRIEVED KILL)</b>								
COOT HARVEST (RETRIEVED KILL)	19	0	2,974	2,597	0	0	823	96
PERCENT CHANGE		-100%		-13%		0%		-88%
SEASONAL COOT HARVEST PER ADULT HUNTER	0.01	0.00	0.11	0.10	0.00	0.00	0.03	0.00
PERCENT CHANGE		-100%		-9%		0%		-100%
<b>TOTAL HUNTER DAYS</b>								
TOTAL HUNTER DAYS	15,464	11,290	233,292	224,483	23,424	37,408	162,219	143,686
PERCENT CHANGE		-27%		-4%		60%		-11%
DAYS PER ADULT HUNTER	9.86	6.77	9.06	9.37	5.47	8.32	7.11	6.38
PERCENT CHANGE		-31%		3%		52%		-10%
<b>TOTAL DUCK STAMPS SOLD</b>								
TOTAL DUCK STAMPS SOLD	1,618	1,657	25,056	23,370	4,741	4,807	25,410	24,336
PERCENT CHANGE		2%		-7%		1%		-4%
PERCENT SOLD TO NON-HUNTERS	7.85	4.30	2.34	2.49	14.19	11.04	14.65	12.03
<b>TOTAL ADULT HUNTERS (POTENTIAL)</b>								
TOTAL ADULT HUNTERS (POTENTIAL)	1,491	1,586	24,470	22,788	4,068	4,276	21,687	21,408
PERCENT CHANGE		6%		-7%		5%		-1%
PERCENT ACTIVE ADULT HUNTERS	83.0	75.8	90.7	91.2	85.7	88.6	80.4	83.1
PERCENT SUCCESSFUL ADULT HUNTERS	69.9	52.7	79.6	78.5	65.6	70.9	64.6	66.1
<b>SAMPLE SIZES</b>								
DUCK WINGS	351	555	1,309	1,149	668	544	1,114	1,099
GOOSE TAILS	183	315	60	107	104	218	484	715
QUESTIONNAIRES	47	33	345	468	28	105	419	534

TABLE 3. --PERCENTAGE SPECIES COMPOSITION OF WATERFOWL HARVESTED, TOTAL NUMBERS HARVESTED, AND ADULT HUNTER STATISTICS IN THE ATLANTIC FLYWAY DURING THE 2000 AND 2001 HUNTING SEASONS.

DUCK SPECIES COMPOSITION (%)	WEST VIRGINIA		FLYWAY TOTAL	
	2000	2001	2000	2001
MALLARD	42.46	53.35	26.75	24.76
DOMESTIC MALLARD	1.33	0.00	0.54	0.68
BLACK DUCK	8.62	4.22	6.83	6.62
BLACK X MALLARD	0.00	0.46	0.93	0.78
MOTTLED DUCK	0.00	0.00	0.50	0.76
GADWALL	1.33	0.00	3.97	2.33
AMERICAN WIGEON	2.66	0.92	2.33	2.67
GREEN-WINGED TEAL	1.99	0.00	11.80	9.25
BLUE-WINGED/CINNAMON TEAL	3.22	4.62	4.58	4.59
NORTHERN SHOVELER	0.00	0.00	1.03	1.21
PINTAIL	0.19	0.00	1.20	1.23
WOOD DUCK	33.36	33.50	21.16	22.09
REDHEAD	0.00	0.46	0.43	0.50
CANVASBACK	0.00	0.00	0.88	0.11
GREATER SCAUP	0.00	0.00	0.69	0.59
LESSER SCAUP	0.00	1.99	1.74	6.38
RING-NECKED DUCK	3.32	0.46	5.46	6.04
GOLDENEYES	0.00	0.00	0.59	0.44
BUFFLEHEAD	0.66	0.00	2.86	2.63
RUDDY DUCK	0.00	0.00	0.49	0.35
LONG-TAILED DUCK	0.00	0.00	0.53	0.60
EIDERS	0.00	0.00	0.86	1.28
SCOTERS	0.00	0.00	0.92	1.48
HOODED MERGANSERS	0.66	0.00	2.21	1.80
OTHER MERGANSERS	0.19	0.00	0.70	0.80
OTHER DUCKS	0.00	0.00	0.04	0.07
TOTAL	100.00	100.00	100.00	100.00
DUCK HARVEST (RETRIEVED KILL)	6,449	6,470	1,865,915	1,626,254
PERCENT CHANGE		0%		-13%
SEASONAL DUCK HARVEST PER ADULT HUNTER	3.00	3.25	7.00	6.02
PERCENT CHANGE		8%		-14%
GOOSE SPECIES COMPOSITION (%)				
CANADA GOOSE	99.34	100.00	84.92	84.18
SNOW GOOSE	0.00	0.00	10.48	10.62
BLUE GOOSE	0.00	0.00	0.27	0.07
WHITE-FRONTED GOOSE	0.00	0.00	0.00	0.00
BRANT	0.00	0.00	4.30	5.10
OTHER GEESE	0.66	0.00	0.02	0.03
TOTAL	100.00	100.00	100.00	100.00
GOOSE HARVEST (RETRIEVED KILL)	4,406	7,192	436,844	612,064
PERCENT CHANGE		63%		40%
SEASONAL GOOSE HARVEST PER ADULT HUNTER	1.98	3.18	1.56	2.09
PERCENT CHANGE		61%		34%
COOT HARVEST (RETRIEVED KILL)	26	17	19,178	12,075
PERCENT CHANGE		-35%		-37%
SEASONAL COOT HARVEST PER ADULT HUNTER	0.01	0.01	0.06	0.04
PERCENT CHANGE		0%		-33%
TOTAL HUNTER DAYS	11,775	12,198	2,082,897	2,269,593
PERCENT CHANGE		4%		9%
DAYS PER ADULT HUNTER	5.38	5.90	7.06	7.51
PERCENT CHANGE		10%		6%
TOTAL DUCK STAMPS SOLD	2,107	2,010	306,740	310,092
PERCENT CHANGE		-5%		1%
PERCENT SOLD TO NON-HUNTERS	1.19	2.16	8.59	7.40
TOTAL ADULT HUNTERS (POTENTIAL)	2,082	1,967	280,379	287,138
PERCENT CHANGE		-6%		2%
PERCENT ACTIVE ADULT HUNTERS	76.6	84.6	83.2	85.1
PERCENT SUCCESSFUL ADULT HUNTERS	59.6	70.3	67.4	68.3
SAMPLE SIZES				
DUCK WINGS	182	186	17,636	15,825
GOOSE TAILS	148	181	5,995	8,378
QUESTIONNAIRES	47	110	4,476	7,799

TABLE 4. --PERCENTAGE SPECIES COMPOSITION OF WATERFOWL HARVESTED, TOTAL NUMBERS HARVESTED, AND ADULT HUNTER STATISTICS IN THE MISSISSIPPI FLYWAY DURING THE 2000 AND 2001 HUNTING SEASONS.

	ALABAMA		ARKANSAS		ILLINOIS		INDIANA	
	2000	2001	2000	2001	2000	2001	2000	2001
<b>DUCK SPECIES COMPOSITION (%)</b>								
MALLARD	35.08	25.00	57.42	56.68	47.00	57.66	55.32	57.45
DOMESTIC MALLARD	0.06	1.03	0.07	0.00	0.03	0.27	0.00	0.27
BLACK DUCK	4.80	0.37	0.07	0.16	0.51	0.10	2.62	2.47
BLACK X MALLARD	0.44	0.37	0.04	0.07	0.10	0.00	0.57	0.39
MOTTLED DUCK	0.00	0.00	0.00	0.00	0.00	0.00	0.00	0.00
GADWALL	22.86	18.14	18.06	16.13	14.56	7.05	11.15	4.83
AMERICAN WIGEON	3.75	2.46	2.14	2.86	2.19	1.68	1.60	0.91
GREEN-WINGED TEAL	5.46	4.01	7.89	9.10	5.34	5.69	7.48	5.81
BLUE-WINGED/CINNAMON TEAL	3.30	6.34	1.36	0.91	5.29	3.44	7.05	4.41
NORTHERN SHOVELER	0.85	1.16	3.98	4.81	3.16	3.16	1.15	0.79
PINTAIL	0.82	0.28	1.40	1.61	1.50	1.49	0.86	1.31
WOOD DUCK	17.09	34.21	4.44	4.09	10.38	10.92	8.37	13.69
REDHEAD	0.00	0.00	0.04	0.13	0.88	0.26	0.18	1.01
CANVASBACK	0.04	0.14	0.09	0.03	1.20	0.00	0.00	0.00
GREATER SCAUP	0.00	0.00	0.02	0.00	0.16	0.00	0.00	0.00
LESSER SCAUP	0.28	0.14	0.99	0.91	3.25	2.07	0.12	0.65
RING-NECKED DUCK	4.12	3.34	1.27	1.87	2.17	3.23	0.95	3.99
GOLDENEYES	0.00	1.63	0.05	0.04	0.34	0.24	0.80	0.13
BUFFLEHEAD	0.00	1.35	0.23	0.24	1.47	0.94	0.57	1.04
RUDDY DUCK	0.00	0.00	0.00	0.07	0.29	0.34	0.58	0.00
LONG-TAILED DUCK	0.00	0.00	0.00	0.00	0.00	0.00	0.00	0.00
EIDERS	0.00	0.00	0.00	0.00	0.00	0.00	0.00	0.00
SCOTERS	0.00	0.00	0.00	0.00	0.00	0.00	0.00	0.00
HOODED MERGANSERS	1.06	0.04	0.43	0.24	0.10	1.35	0.62	0.76
OTHER MERGANSERS	0.00	0.00	0.00	0.00	0.08	0.09	0.00	0.09
OTHER DUCKS	0.00	0.00	0.00	0.03	0.00	0.00	0.00	0.00
TOTAL	100.00	100.00	100.00	100.00	100.00	100.00	100.00	100.00
DUCK HARVEST (RETRIEVED KILL)	225,275	143,685	1,502,502	1,123,766	473,161	445,294	107,408	141,743
PERCENT CHANGE		-36%		-25%		-6%		32%
SEASONAL DUCK HARVEST PER ADULT HUNTER	14.96	9.58	18.61	12.98	7.23	7.19	4.93	5.02
PERCENT CHANGE		-36%		-30%		-1%		2%
<b>GOOSE SPECIES COMPOSITION (%)</b>								
CANADA GOOSE	100.00	87.34	43.59	4.86	99.02	99.85	99.76	100.00
SNOW GOOSE	0.00	6.33	23.06	38.93	0.25	0.00	0.00	0.00
BLUE GOOSE	0.00	0.00	17.96	27.91	0.49	0.00	0.00	0.00
WHITE-FRONTED GOOSE	0.00	6.33	13.68	16.54	0.00	0.15	0.00	0.00
BRANT	0.00	0.00	0.00	0.00	0.00	0.00	0.00	0.00
OTHER GEESE	0.00	0.00	1.70	11.76	0.25	0.00	0.24	0.00
TOTAL	100.00	100.00	100.00	100.00	100.00	100.00	100.00	100.00
GOOSE HARVEST (RETRIEVED KILL)	5,685	5,318	97,097	73,706	122,427	76,185	65,712	58,494
PERCENT CHANGE		-6%		-24%		-38%		-11%
SEASONAL GOOSE HARVEST PER ADULT HUNTER	0.64	0.83	1.62	1.75	2.05	1.26	2.93	2.05
PERCENT CHANGE		30%		8%		-39%		-30%
<b>COOT HARVEST (RETRIEVED KILL)</b>								
COOT HARVEST (RETRIEVED KILL)	3,062	2,520	487	1,272	1,505	1,622	254	2,401
PERCENT CHANGE		-18%		161%		8%		845%
SEASONAL COOT HARVEST PER ADULT HUNTER	0.17	0.14	0.01	0.02	0.02	0.03	0.01	0.08
PERCENT CHANGE		-18%		100%		50%		700%
<b>TOTAL HUNTER DAYS</b>								
TOTAL HUNTER DAYS	183,444	192,019	757,383	845,745	537,105	612,437	236,933	275,038
PERCENT CHANGE		5%		12%		14%		16%
DAYS PER ADULT HUNTER	10.30	10.60	10.99	12.29	8.68	10.63	8.72	9.33
PERCENT CHANGE		3%		12%		22%		7%
<b>TOTAL DUCK STAMPS SOLD</b>								
TOTAL DUCK STAMPS SOLD	16,955	17,292	67,023	66,351	60,720	56,222	26,224	28,260
PERCENT CHANGE		2%		-1%		-7%		8%
PERCENT SOLD TO NON-HUNTERS	1.80	2.14	3.91	3.07	4.80	4.22	3.14	2.54
<b>TOTAL ADULT HUNTERS (POTENTIAL)</b>								
TOTAL ADULT HUNTERS (POTENTIAL)	16,650	16,922	64,402	64,314	57,805	53,849	25,401	27,542
PERCENT CHANGE		2%		-0%		-7%		8%
PERCENT ACTIVE ADULT HUNTERS	90.2	90.0	86.3	89.9	88.2	86.4	86.0	88.4
PERCENT SUCCESSFUL ADULT HUNTERS	81.2	73.8	73.9	75.0	65.9	68.6	69.3	69.9
<b>SAMPLE SIZES</b>								
DUCK WINGS	698	340	5,151	3,513	1,712	1,593	508	622
GOOSE TAILS	23	17	192	143	424	189	392	258
QUESTIONNAIRES	275	300	183	464	1,436	1,739	400	516

TABLE 4. --PERCENTAGE SPECIES COMPOSITION OF WATERFOWL HARVESTED, TOTAL NUMBERS HARVESTED, AND ADULT HUNTER STATISTICS IN THE MISSISSIPPI FLYWAY DURING THE 2000 AND 2001 HUNTING SEASONS.

	IOWA		KENTUCKY		LOUISIANA		MICHIGAN	
	2000	2001	2000	2001	2000	2001	2000	2001
<b>DUCK SPECIES COMPOSITION (%)</b>								
MALLARD	35.38	39.96	53.38	61.23	19.71	10.05	47.82	48.30
DOMESTIC MALLARD	0.25	0.06	0.21	0.47	0.08	0.00	0.19	0.20
BLACK DUCK	0.00	0.14	4.01	1.86	0.06	0.00	3.88	2.66
BLACK X MALLARD	0.00	0.00	0.21	0.20	0.01	0.02	0.52	0.44
MOTTLED DUCK	0.00	0.00	0.00	0.00	1.51	2.34	0.00	0.00
GADWALL	10.94	2.96	11.01	5.31	18.39	22.32	1.65	1.32
AMERICAN WIGEON	2.20	1.42	1.83	1.11	3.11	3.28	1.27	2.52
GREEN-WINGED TEAL	12.12	9.34	2.19	3.90	14.40	14.41	8.51	6.74
BLUE-WINGED/CINNAMON TEAL	12.09	15.81	7.23	2.84	19.49	27.31	1.60	1.80
NORTHERN SHOVELER	2.84	3.29	0.07	1.28	3.47	5.77	0.05	1.19
PINTAIL	1.56	2.13	0.00	1.60	3.19	2.26	1.57	2.34
WOOD DUCK	19.05	16.37	17.24	16.50	7.38	4.62	15.39	10.64
REDHEAD	0.24	1.17	0.56	0.00	0.25	0.28	3.41	3.17
CANVASBACK	0.13	0.67	0.22	0.00	0.63	0.06	1.85	0.31
GREATER SCAUP	0.00	0.28	0.00	0.00	0.08	0.09	2.13	1.17
LESSER SCAUP	0.86	3.56	0.36	1.35	5.16	4.04	1.70	4.15
RING-NECKED DUCK	2.08	1.38	0.21	1.05	2.56	2.47	1.65	3.00
GOLDENEYES	0.22	0.00	0.00	0.20	0.00	0.01	0.77	1.70
BUFFLEHEAD	0.00	0.44	0.73	0.34	0.15	0.11	3.89	4.98
RUDDY DUCK	0.00	0.14	0.00	0.00	0.03	0.00	0.13	0.73
LONG-TAILED DUCK	0.00	0.00	0.00	0.00	0.00	0.00	0.00	0.10
EIDERS	0.00	0.00	0.00	0.00	0.00	0.00	0.00	0.00
SCOTERS	0.00	0.00	0.00	0.00	0.00	0.00	0.33	0.12
HOODED MERGANSERS	0.04	0.86	0.27	0.75	0.31	0.27	1.18	1.49
OTHER MERGANSERS	0.00	0.00	0.27	0.00	0.01	0.06	0.49	0.93
OTHER DUCKS	0.00	0.00	0.00	0.00	0.00	0.25	0.00	0.00
TOTAL	100.00	100.00	100.00	100.00	100.00	100.00	100.00	100.00
DUCK HARVEST (RETRIEVED KILL)	209,576	248,983	110,563	118,558	2,509,652	2,056,857	300,116	304,002
PERCENT CHANGE		19%		7%		-18%		1%
SEASONAL DUCK HARVEST PER ADULT HUNTER	7.32	7.78	9.08	7.45	23.70	20.43	4.81	4.98
PERCENT CHANGE		6%		-18%		-14%		4%
<b>GOOSE SPECIES COMPOSITION (%)</b>								
CANADA GOOSE	98.61	91.75	99.06	89.19	1.47	2.67	100.00	99.81
SNOW GOOSE	0.46	5.89	0.00	2.70	23.63	22.39	0.00	0.19
BLUE GOOSE	0.46	2.36	0.00	2.70	22.03	30.15	0.00	0.00
WHITE-FRONTED GOOSE	0.00	0.00	0.00	5.41	50.41	41.59	0.00	0.00
BRANT	0.00	0.00	0.00	0.00	0.00	0.00	0.00	0.00
OTHER GEESE	0.46	0.00	0.94	0.00	2.45	3.20	0.00	0.00
TOTAL	100.00	100.00	100.00	100.00	100.00	100.00	100.00	100.00
GOOSE HARVEST (RETRIEVED KILL)	61,906	48,466	40,182	22,142	233,553	131,589	131,991	145,952
PERCENT CHANGE		-22%		-45%		-44%		11%
SEASONAL GOOSE HARVEST PER ADULT HUNTER	2.28	1.52	2.25	1.31	2.44	1.48	1.85	2.18
PERCENT CHANGE		-33%		-42%		-39%		18%
<b>COOT HARVEST (RETRIEVED KILL)</b>								
COOT HARVEST (RETRIEVED KILL)	1,056	684	1,353	1,648	108,211	77,437	1,454	1,400
PERCENT CHANGE		-35%		22%		-28%		-4%
SEASONAL COOT HARVEST PER ADULT HUNTER	0.03	0.02	0.07	0.08	0.98	0.73	0.02	0.02
PERCENT CHANGE		-33%		14%		-26%		0%
<b>TOTAL HUNTER DAYS</b>								
TOTAL HUNTER DAYS	308,615	319,408	212,407	230,193	1,321,486	1,310,393	503,514	586,887
PERCENT CHANGE		3%		8%		-1%		17%
DAYS PER ADULT HUNTER	9.67	9.61	10.69	11.09	12.21	12.64	7.17	8.43
PERCENT CHANGE		-1%		4%		4%		18%
<b>TOTAL DUCK STAMPS SOLD</b>								
TOTAL DUCK STAMPS SOLD	30,951	32,090	18,874	19,749	103,763	98,666	69,410	68,350
PERCENT CHANGE		4%		5%		-5%		-2%
PERCENT SOLD TO NON-HUNTERS	3.62	3.17	1.62	1.74	2.52	1.80	5.38	4.82
<b>TOTAL ADULT HUNTERS (POTENTIAL)</b>								
TOTAL ADULT HUNTERS (POTENTIAL)	29,831	31,073	18,568	19,405	101,148	96,890	65,676	65,056
PERCENT CHANGE		4%		5%		-4%		-1%
PERCENT ACTIVE ADULT HUNTERS	89.5	90.1	91.0	88.5	90.5	88.9	86.3	89.2
PERCENT SUCCESSFUL ADULT HUNTERS	74.8	76.2	72.1	69.1	80.9	79.4	70.5	72.5
<b>SAMPLE SIZES</b>								
DUCK WINGS	1,090	1,017	559	468	6,757	6,697	1,108	1,288
GOOSE TAILS	222	172	123	37	211	189	337	528
QUESTIONNAIRES	523	975	201	477	864	1,102	373	793

TABLE 4. --PERCENTAGE SPECIES COMPOSITION OF WATERFOWL HARVESTED, TOTAL NUMBERS HARVESTED, AND ADULT HUNTER STATISTICS IN THE MISSISSIPPI FLYWAY DURING THE 2000 AND 2001 HUNTING SEASONS.

	MINNESOTA		MISSISSIPPI		MISSOURI		OHIO	
	2000	2001	2000	2001	2000	2001	2000	2001
<b>DUCK SPECIES COMPOSITION (%)</b>								
MALLARD	32.82	38.96	42.72	46.52	49.33	60.02	48.18	49.33
DOMESTIC MALLARD	0.05	0.11	0.28	0.00	0.12	0.14	0.47	0.00
BLACK DUCK	0.11	0.03	0.00	0.00	0.06	0.00	3.42	3.02
BLACK X MALLARD	0.06	0.04	0.05	0.00	0.00	0.00	0.61	0.64
MOTTLED DUCK	0.00	0.00	0.33	0.49	0.00	0.00	0.00	0.00
GADWALL	3.25	2.14	24.12	14.09	20.56	11.81	4.17	6.28
AMERICAN WIGEON	2.11	1.81	2.84	2.24	3.46	1.84	1.40	2.42
GREEN-WINGED TEAL	7.54	5.96	7.02	6.34	8.59	7.35	6.30	3.30
BLUE-WINGED/CINNAMON TEAL	13.71	15.13	1.01	1.50	6.21	5.06	5.00	6.78
NORTHERN SHOVELER	1.41	1.86	2.56	2.25	3.07	4.64	0.41	0.77
PINTAIL	1.94	1.26	1.40	1.45	2.18	3.06	0.48	0.52
WOOD DUCK	15.57	12.20	13.22	21.37	3.69	2.80	17.70	14.45
REDHEAD	1.99	2.29	0.11	0.18	0.46	0.27	0.23	0.49
CANVASBACK	1.15	0.53	0.14	0.00	0.18	0.00	1.14	0.12
GREATER SCAUP	0.36	0.25	0.18	0.08	0.00	0.06	0.67	0.00
LESSER SCAUP	2.46	4.53	1.36	0.71	0.66	1.38	6.37	4.52
RING-NECKED DUCK	12.27	10.02	2.14	0.57	1.19	0.96	1.50	1.89
GOLDENEYES	0.76	0.94	0.00	0.11	0.00	0.10	0.24	0.64
BUFFLEHEAD	1.14	1.19	0.11	0.23	0.00	0.06	0.58	3.09
RUDDY DUCK	0.24	0.08	0.00	0.00	0.00	0.00	0.12	0.00
LONG-TAILED DUCK	0.00	0.00	0.00	0.00	0.00	0.00	0.00	0.00
EIDERS	0.00	0.00	0.00	0.00	0.00	0.00	0.00	0.00
SCOTERS	0.00	0.09	0.00	0.00	0.04	0.00	0.00	0.00
HOODED MERGANSERS	1.04	0.59	0.35	1.88	0.20	0.48	0.83	1.41
OTHER MERGANSERS	0.02	0.00	0.05	0.00	0.00	0.00	0.17	0.20
OTHER DUCKS	0.00	0.00	0.00	0.00	0.00	0.00	0.00	0.12
TOTAL	100.00	100.00	100.00	100.00	100.00	100.00	100.00	100.00
<b>DUCK HARVEST (RETRIEVED KILL)</b>								
PERCENT CHANGE		21%		-61%		2%		-0%
SEASONAL DUCK HARVEST PER ADULT HUNTER	5.83	6.74	22.22	9.09	11.73	11.68	4.24	4.19
PERCENT CHANGE		16%		-59%		-0%		-1%
<b>GOOSE SPECIES COMPOSITION (%)</b>								
CANADA GOOSE	96.52	98.97	60.60	70.98	75.54	64.46	99.34	100.00
SNOW GOOSE	1.02	0.15	14.78	10.96	11.94	20.38	0.00	0.00
BLUE GOOSE	2.47	0.88	0.00	3.86	11.48	11.45	0.00	0.00
WHITE-FRONTED GOOSE	0.00	0.00	24.63	7.10	0.52	1.98	0.00	0.00
BRANT	0.00	0.00	0.00	0.00	0.00	0.00	0.00	0.00
OTHER GEESE	0.00	0.00	0.00	7.10	0.52	1.73	0.66	0.00
TOTAL	100.00	100.00	100.00	0.00	100.00	100.00	100.00	100.00
<b>GOOSE HARVEST (RETRIEVED KILL)</b>								
PERCENT CHANGE		32%		-10%		55%		-13%
SEASONAL GOOSE HARVEST PER ADULT HUNTER	1.65	1.97	0.89	0.71	1.97	2.74	2.86	2.32
PERCENT CHANGE		19%		-20%		39%		-19%
<b>COOT HARVEST (RETRIEVED KILL)</b>								
PERCENT CHANGE		-31%		-37%		59%		-46%
SEASONAL COOT HARVEST PER ADULT HUNTER	0.05	0.03	0.04	0.03	0.01	0.02	0.03	0.01
PERCENT CHANGE		-40%		-25%		100%		-67%
<b>TOTAL HUNTER DAYS</b>								
PERCENT CHANGE		15%		-33%		32%		14%
DAYS PER ADULT HUNTER	7.14	8.15	11.76	8.95	9.80	12.39	8.41	9.18
PERCENT CHANGE		14%		-24%		26%		9%
<b>TOTAL DUCK STAMPS SOLD</b>								
PERCENT CHANGE		-0%		-12%		3%		4%
PERCENT SOLD TO NON-HUNTERS	3.86	3.15	2.35	2.39	2.68	1.76	4.88	4.29
<b>TOTAL ADULT HUNTERS (POTENTIAL)</b>								
PERCENT CHANGE		0%		-12%		4%		5%
PERCENT ACTIVE ADULT HUNTERS	91.8	94.1	92.3	86.8	89.7	92.6	86.6	86.1
PERCENT SUCCESSFUL ADULT HUNTERS	77.7	82.2	84.2	69.7	75.5	79.8	67.0	66.9
<b>SAMPLE SIZES</b>								
DUCK WINGS	2,630	2,567	1,118	1,022	1,826	1,727	643	575
GOOSE TAILS	690	682	21	15	197	254	309	313
QUESTIONNAIRES	2,030	2,854	194	506	649	391	681	1,191

TABLE 4. --PERCENTAGE SPECIES COMPOSITION OF WATERFOWL HARVESTED, TOTAL NUMBERS HARVESTED, AND ADULT HUNTER STATISTICS IN THE MISSISSIPPI FLYWAY DURING THE 2000 AND 2001 HUNTING SEASONS.

	TENNESSEE		WISCONSIN		FLYWAY TOTAL	
	2000	2001	2000	2001	2000	2001
<b>DUCK SPECIES COMPOSITION (%)</b>						
MALLARD	50.25	52.55	38.34	37.52	38.61	37.77
DOMESTIC MALLARD	0.17	0.00	0.00	0.07	0.11	0.09
BLACK DUCK	2.47	1.21	0.91	0.77	0.66	0.39
BLACK X MALLARD	0.62	0.04	0.23	0.35	0.12	0.09
MOTTLED DUCK	0.00	0.00	0.00	0.00	0.51	0.74
GADWALL	15.80	11.27	5.31	1.45	15.97	13.17
AMERICAN WIGEON	3.14	2.97	3.18	3.73	2.67	2.59
GREEN-WINGED TEAL	3.36	6.06	7.75	12.03	9.48	9.48
BLUE-WINGED/CINNAMON TEAL	6.43	1.98	9.79	10.82	9.59	12.34
NORTHERN SHOVELER	1.52	2.48	1.70	2.73	2.80	3.90
PINTAIL	1.54	3.57	2.18	1.21	2.05	1.94
WOOD DUCK	9.63	12.46	17.33	14.69	9.45	8.85
REDHEAD	0.00	0.13	1.38	2.00	0.51	0.68
CANVASBACK	0.31	0.11	1.81	0.85	0.56	0.16
GREATER SCAUP	0.00	0.11	0.87	0.31	0.20	0.14
LESSER SCAUP	0.96	1.81	1.18	1.08	2.63	2.68
RING-NECKED DUCK	2.60	1.78	4.89	5.55	2.84	3.06
GOLDENEYES	0.27	0.18	0.24	0.33	0.15	0.28
BUFFLEHEAD	0.11	0.47	1.37	2.83	0.50	0.75
RUDDY DUCK	0.00	0.00	0.33	0.00	0.07	0.08
LONG-TAILED DUCK	0.06	0.00	0.03	0.00	0.00	0.00
EIDERS	0.00	0.00	0.00	0.00	0.00	0.00
SCOTERS	0.00	0.00	0.00	0.24	0.01	0.02
HOODED MERGANSERS	0.64	0.81	0.85	0.68	0.46	0.60
OTHER MERGANSERS	0.00	0.00	0.33	0.77	0.05	0.10
OTHER DUCKS	0.14	0.00	0.00	0.00	0.01	0.09
TOTAL	100.00	100.00	100.00	100.00	100.00	100.00
DUCK HARVEST (RETRIEVED KILL)	413,425	303,233	266,409	253,040	7,877,163	6,630,916
PERCENT CHANGE		-27%		-5%		-16%
SEASONAL DUCK HARVEST PER ADULT HUNTER	17.29	12.91	3.85	4.06	11.03	9.38
PERCENT CHANGE		-25%		5%		-15%
<b>GOOSE SPECIES COMPOSITION (%)</b>						
CANADA GOOSE	100.00	100.00	99.44	99.39	73.73	76.28
SNOW GOOSE	0.00	0.00	0.00	0.00	7.50	8.14
BLUE GOOSE	0.00	0.00	0.56	0.61	6.78	7.28
WHITE-FRONTED GOOSE	0.00	0.00	0.00	0.00	11.21	6.79
BRANT	0.00	0.00	0.00	0.00	0.00	0.00
OTHER GEESE	0.00	0.00	0.00	0.00	0.77	1.51
TOTAL	100.00	100.00	100.00	100.00	100.00	100.00
GOOSE HARVEST (RETRIEVED KILL)	32,931	22,263	72,087	40,666	1,215,840	1,059,995
PERCENT CHANGE		-32%		-44%		-13%
SEASONAL GOOSE HARVEST PER ADULT HUNTER	1.60	1.05	0.82	0.64	1.82	1.63
PERCENT CHANGE		-34%		-22%		-10%
<b>COOT HARVEST (RETRIEVED KILL)</b>						
COOT HARVEST (RETRIEVED KILL)	1,084	5,216	2,839	2,694	130,839	103,676
PERCENT CHANGE		381%		-5%		-21%
SEASONAL COOT HARVEST PER ADULT HUNTER	0.03	0.13	0.03	0.03	0.17	0.13
PERCENT CHANGE		333%		0%		-24%
<b>TOTAL HUNTER DAYS</b>						
TOTAL HUNTER DAYS	426,195	453,034	533,434	532,983	7,103,014	7,647,324
PERCENT CHANGE		6%		-0%		8%
DAYS PER ADULT HUNTER	12.24	11.66	6.72	6.99	9.21	9.96
PERCENT CHANGE		-5%		4%		8%
<b>TOTAL DUCK STAMPS SOLD</b>						
TOTAL DUCK STAMPS SOLD	33,666	37,431	76,393	73,098	747,093	739,387
PERCENT CHANGE		11%		-4%		-1%
PERCENT SOLD TO NON-HUNTERS	3.37	3.02	2.85	2.57	3.56	3.00
<b>TOTAL ADULT HUNTERS (POTENTIAL)</b>						
TOTAL ADULT HUNTERS (POTENTIAL)	32,531	36,301	74,216	71,219	720,535	717,214
PERCENT CHANGE		12%		-4%		-0%
PERCENT ACTIVE ADULT HUNTERS	92.9	91.4	89.4	89.6	89.5	90.1
PERCENT SUCCESSFUL ADULT HUNTERS	82.4	76.4	65.6	66.8	74.4	74.9
<b>SAMPLE SIZES</b>						
DUCK WINGS	922	1,134	1,456	1,103	26,178	23,666
GOOSE TAILS	56	97	348	155	3,545	3,049
QUESTIONNAIRES	312	474	2,022	5,763	10,143	17,545

TABLE 5. --PERCENTAGE SPECIES COMPOSITION OF WATERFOWL HARVESTED, TOTAL NUMBERS HARVESTED, AND ADULT HUNTER STATISTICS IN THE CENTRAL FLYWAY DURING THE 2000 AND 2001 HUNTING SEASONS.

	COLORADO		KANSAS		MONTANA		NEBRASKA	
	2000	2001	2000	2001	2000	2001	2000	2001
<b>DUCK SPECIES COMPOSITION (%)</b>								
MALLARD	50.70	66.74	47.98	52.61	71.40	70.95	55.67	64.23
DOMESTIC MALLARD	0.10	0.00	0.00	0.00	0.00	0.00	0.05	0.00
BLACK DUCK	0.00	0.00	0.00	0.00	0.00	0.00	0.00	0.00
BLACK X MALLARD	0.00	0.00	0.00	0.00	0.00	0.00	0.00	0.00
MOTTLED DUCK	0.00	0.00	0.00	0.00	0.00	0.00	0.00	0.00
GADWALL	8.47	6.16	13.81	10.46	8.86	4.01	10.63	5.59
AMERICAN WIGEON	6.01	6.78	6.93	3.30	3.26	5.84	5.65	2.59
GREEN-WINGED TEAL	10.99	8.55	13.80	11.58	2.59	3.85	10.74	8.83
BLUE-WINGED/CINNAMON TEAL	10.71	4.29	7.90	8.99	2.83	2.96	5.77	8.64
NORTHERN SHOVELER	2.96	1.12	0.85	1.93	1.17	0.52	1.63	2.09
PINTAIL	2.60	1.47	3.67	4.14	1.92	2.27	3.45	3.51
WOOD DUCK	1.94	1.47	1.16	2.17	1.39	3.54	3.46	0.99
REDHEAD	0.91	0.36	1.31	1.43	1.30	0.00	1.16	0.80
CANVASBACK	0.15	0.15	0.05	0.29	0.74	0.41	0.00	0.08
GREATER SCAUP	0.03	0.00	0.00	0.11	0.20	0.00	0.05	0.00
LESSER SCAUP	1.05	0.39	0.06	0.44	2.18	0.20	0.32	0.36
RING-NECKED DUCK	0.97	0.63	0.67	1.34	0.25	2.56	0.81	1.05
GOLDENEYES	1.50	0.86	1.02	0.56	1.59	2.28	0.25	0.04
BUFFLEHEAD	0.29	0.44	0.38	0.32	0.00	0.00	0.00	0.64
RUDDY DUCK	0.25	0.04	0.18	0.00	0.00	0.00	0.16	0.18
LONG-TAILED DUCK	0.00	0.00	0.00	0.00	0.00	0.00	0.00	0.00
EIDERS	0.00	0.00	0.00	0.00	0.00	0.00	0.00	0.00
SCOTERS	0.10	0.00	0.00	0.00	0.12	0.20	0.00	0.00
HOODED MERGANSERS	0.13	0.12	0.19	0.33	0.00	0.41	0.05	0.27
OTHER MERGANSERS	0.12	0.42	0.00	0.00	0.00	0.00	0.14	0.12
OTHER DUCKS	0.00	0.00	0.05	0.00	0.20	0.00	0.00	0.00
TOTAL	100.00	100.00	100.00	100.00	100.00	100.00	100.00	100.00
DUCK HARVEST (RETRIEVED KILL)	102,480	154,340	256,841	240,720	32,263	43,080	262,088	223,742
PERCENT CHANGE		51%		-6%		34%		-15%
SEASONAL DUCK HARVEST PER ADULT HUNTER	3.11	4.01	7.96	8.29	2.89	4.17	6.49	5.83
PERCENT CHANGE		29%		4%		44%		-10%
<b>GOOSE SPECIES COMPOSITION (%)</b>								
CANADA GOOSE	92.02	84.62	83.51	89.19	98.47	98.44	96.54	92.88
SNOW GOOSE	7.18	11.53	5.43	3.18	0.00	0.70	1.57	4.36
BLUE GOOSE	0.00	0.70	1.60	1.33	0.00	0.00	0.79	1.38
WHITE-FRONTED GOOSE	0.00	0.35	9.46	5.92	1.15	0.86	0.47	0.69
BRANT	0.00	0.00	0.00	0.00	0.00	0.00	0.00	0.00
OTHER GEESE	0.80	2.80	0.00	0.39	0.38	0.00	0.63	0.69
TOTAL	100.00	100.00	100.00	100.00	100.00	100.00	100.00	100.00
GOOSE HARVEST (RETRIEVED KILL)	112,137	138,771	113,347	83,498	25,201	55,513	124,455	65,821
PERCENT CHANGE		24%		-26%		120%		-47%
SEASONAL GOOSE HARVEST PER ADULT HUNTER	3.18	3.46	4.03	2.96	2.88	5.71	3.39	2.11
PERCENT CHANGE		9%		-27%		98%		-38%
<b>COOT HARVEST (RETRIEVED KILL)</b>								
COOT HARVEST (RETRIEVED KILL)	1,007	960	113	976	36	0	126	278
PERCENT CHANGE		-5%		764%		-100%		121%
SEASONAL COOT HARVEST PER ADULT HUNTER	0.03	0.02	0.00	0.03	0.00	0.00	0.00	0.01
PERCENT CHANGE		-33%		++		0%		++
<b>TOTAL HUNTER DAYS</b>								
TOTAL HUNTER DAYS	302,530	392,509	229,127	266,463	34,319	62,380	404,433	330,879
PERCENT CHANGE		30%		16%		82%		-18%
DAYS PER ADULT HUNTER	7.91	9.29	7.64	9.42	4.38	7.43	10.31	9.24
PERCENT CHANGE		17%		23%		70%		-10%
<b>TOTAL DUCK STAMPS SOLD</b>								
TOTAL DUCK STAMPS SOLD	35,605	39,304	29,195	27,032	7,265	7,744	37,072	33,761
PERCENT CHANGE		10%		-7%		7%		-9%
PERCENT SOLD TO NON-HUNTERS	1.06	0.96	5.31	3.57	0.66	0.09	2.56	2.33
<b>TOTAL ADULT HUNTERS (POTENTIAL)</b>								
TOTAL ADULT HUNTERS (POTENTIAL)	35,228	38,927	27,645	26,067	7,217	7,737	36,123	32,974
PERCENT CHANGE		11%		-6%		7%		-9%
PERCENT ACTIVE ADULT HUNTERS	85.2	82.7	84.0	84.5	79.6	85.2	83.3	85.1
PERCENT SUCCESSFUL ADULT HUNTERS	67.0	65.6	69.4	72.0	65.6	72.8	67.5	66.7
<b>SAMPLE SIZES</b>								
DUCK WINGS	1,335	1,711	1,529	1,010	473	471	1,705	1,400
GOOSE TAILS	623	859	377	260	186	184	642	431
QUESTIONNAIRES	290	336	238	290	137	223	395	652

TABLE 5. --PERCENTAGE SPECIES COMPOSITION OF WATERFOWL HARVESTED, TOTAL NUMBERS HARVESTED, AND ADULT HUNTER STATISTICS IN THE CENTRAL FLYWAY DURING THE 2000 AND 2001 HUNTING SEASONS.

DUCK SPECIES COMPOSITION (%)	NEW MEXICO		NORTH DAKOTA		OKLAHOMA		SOUTH DAKOTA	
	2000	2001	2000	2001	2000	2001	2000	2001
MALLARD	35.09	42.95	40.39	48.97	53.64	59.63	47.62	51.80
DOMESTIC MALLARD	0.09	0.00	0.01	0.00	0.36	0.00	0.00	0.00
BLACK DUCK	0.00	0.00	0.00	0.00	0.00	0.00	0.00	0.00
BLACK X MALLARD	0.00	0.00	0.00	0.00	0.00	0.00	0.00	0.00
MOTTLED DUCK	0.00	0.00	0.00	0.00	0.00	0.00	0.00	0.00
GADWALL	13.29	11.21	23.32	16.95	21.01	17.31	12.33	10.45
AMERICAN WIGEON	15.69	13.59	5.62	4.83	3.75	3.78	4.52	4.23
GREEN-WINGED TEAL	11.52	9.66	5.04	2.96	8.03	8.38	11.89	7.88
BLUE-WINGED/CINNAMON TEAL	6.28	3.99	5.26	6.32	1.96	1.55	6.62	8.10
NORTHERN SHOVELER	2.74	3.19	3.10	3.70	1.39	1.08	2.53	5.46
PINTAIL	8.00	5.94	4.44	4.71	2.14	1.96	3.70	4.00
WOOD DUCK	1.96	1.88	0.32	0.16	1.72	1.01	2.89	1.76
REDHEAD	0.62	2.71	2.52	2.78	0.79	1.48	2.50	2.55
CANVASBACK	0.09	0.00	1.17	1.21	0.35	0.09	0.67	0.07
GREATER SCAUP	0.00	0.44	0.05	0.04	0.02	0.00	0.00	0.00
LESSER SCAUP	0.70	0.25	5.56	5.04	0.43	0.24	2.09	1.30
RING-NECKED DUCK	0.80	0.82	1.89	1.31	3.31	2.30	1.47	1.41
GOLDENEYES	0.09	0.00	0.00	0.14	0.00	0.36	0.10	0.02
BUFFLEHEAD	0.36	0.29	1.00	0.51	0.30	0.17	0.47	0.46
RUDDY DUCK	0.00	0.00	0.17	0.26	0.05	0.09	0.40	0.37
LONG-TAILED DUCK	0.00	0.00	0.00	0.00	0.00	0.00	0.00	0.00
EIDERS	0.00	0.00	0.00	0.00	0.00	0.00	0.00	0.00
SCOTERS	0.00	0.00	0.00	0.00	0.00	0.00	0.00	0.00
HOODED MERGANSERS	0.00	0.13	0.14	0.06	0.44	0.58	0.15	0.07
OTHER MERGANSERS	0.39	0.27	0.00	0.00	0.29	0.00	0.03	0.08
OTHER DUCKS	2.30	2.67	0.00	0.04	0.00	0.00	0.00	0.00
TOTAL	100.00	100.00	100.00	100.00	100.00	100.00	100.00	100.00
DUCK HARVEST (RETRIEVED KILL)	38,911	31,111	583,558	694,712	311,671	242,022	248,577	290,787
PERCENT CHANGE		-20%		19%		-22%		17%
SEASONAL DUCK HARVEST PER ADULT HUNTER	5.44	5.38	4.60	6.67	11.49	9.72	5.34	6.29
PERCENT CHANGE		-1%		45%		-15%		18%
-----								
GOOSE SPECIES COMPOSITION (%)								
CANADA GOOSE	17.51	11.46	75.37	69.54	79.78	70.68	96.54	89.20
SNOW GOOSE	64.44	30.94	9.81	14.52	9.44	14.86	0.91	4.99
BLUE GOOSE	2.12	0.05	12.61	13.22	3.65	7.68	1.09	4.25
WHITE-FRONTED GOOSE	0.53	0.00	1.79	1.01	5.60	1.81	1.46	0.62
BRANT	0.00	0.00	0.14	0.00	0.00	0.00	0.00	0.00
OTHER GEESE	15.39	57.55	0.28	1.70	1.52	4.97	0.00	0.94
TOTAL	100.00	100.00	100.00	100.00	100.00	100.00	100.00	100.00
GOOSE HARVEST (RETRIEVED KILL)	6,412	4,737	184,770	242,039	62,762	44,033	139,833	188,587
PERCENT CHANGE		-26%		31%		-30%		35%
SEASONAL GOOSE HARVEST PER ADULT HUNTER	1.06	1.49	3.70	5.51	2.73	2.08	4.11	5.55
PERCENT CHANGE		41%		49%		-24%		35%
-----								
COOT HARVEST (RETRIEVED KILL)								
COOT HARVEST (RETRIEVED KILL)	151	20	15,937	3,140	1,068	1,691	691	2,239
PERCENT CHANGE		-87%		-80%		58%		224%
SEASONAL COOT HARVEST PER ADULT HUNTER	0.03	0.00	0.42	0.08	0.05	0.08	0.02	0.06
PERCENT CHANGE		-100%		-81%		60%		200%
-----								
TOTAL HUNTER DAYS								
TOTAL HUNTER DAYS	24,500	27,037	210,248	256,244	181,239	191,278	260,211	325,585
PERCENT CHANGE		10%		22%		6%		25%
DAYS PER ADULT HUNTER	5.43	6.11	5.66	6.96	8.01	8.65	7.56	9.18
PERCENT CHANGE		13%		23%		8%		21%
-----								
TOTAL DUCK STAMPS SOLD								
TOTAL DUCK STAMPS SOLD	4,214	4,077	34,926	34,421	21,362	20,656	32,445	33,513
PERCENT CHANGE		-3%		-1%		-3%		3%
PERCENT SOLD TO NON-HUNTERS	1.32	0.05	2.07	1.50	2.43	1.35	2.29	2.55
-----								
TOTAL ADULT HUNTERS (POTENTIAL)								
TOTAL ADULT HUNTERS (POTENTIAL)	4,158	4,075	34,203	33,905	20,843	20,377	31,702	32,658
PERCENT CHANGE		-2%		-1%		-2%		3%
PERCENT ACTIVE ADULT HUNTERS	89.0	81.9	77.8	86.6	81.5	86.8	83.2	88.2
PERCENT SUCCESSFUL ADULT HUNTERS	74.5	62.4	68.4	77.1	71.1	75.7	70.1	76.7
-----								
SAMPLE SIZES								
DUCK WINGS	773	476	3,919	3,556	2,114	1,543	1,862	2,383
GOOSE TAILS	126	66	1,239	1,401	197	209	768	956
QUESTIONNAIRES	109	127	387	830	265	332	602	678



TABLE 5. --PERCENTAGE SPECIES COMPOSITION OF WATERFOWL HARVESTED, TOTAL NUMBERS HARVESTED, AND ADULT HUNTER STATISTICS IN THE CENTRAL FLYWAY DURING THE 2000 AND 2001 HUNTING SEASONS.

DUCK SPECIES COMPOSITION (%)	TEXAS		WYOMING		FLYWAY TOTAL	
	2000	2001	2000	2001	2000	2001
MALLARD	15.20	15.92	65.27	62.22	34.34	38.16
DOMESTIC MALLARD	0.02	0.01	0.15	0.00	0.06	0.01
BLACK DUCK	0.00	0.00	0.00	0.00	0.00	0.00
BLACK X MALLARD	0.01	0.01	0.00	0.00	0.01	0.01
MOTTLED DUCK	0.87	1.14	0.00	0.00	0.37	0.49
GADWALL	21.28	20.14	6.84	5.87	18.67	15.78
AMERICAN WIGEON	7.08	7.27	6.23	10.04	6.19	5.75
GREEN-WINGED TEAL	13.86	14.45	7.56	10.08	10.99	10.09
BLUE-WINGED/CINNAMON TEAL	11.00	11.76	6.27	0.91	7.89	8.60
NORTHERN SHOVELER	5.19	6.26	1.61	0.73	3.43	4.34
PINTAIL	5.11	5.47	0.61	1.23	4.22	4.46
WOOD DUCK	6.44	5.67	0.15	2.75	3.63	3.07
REDHEAD	3.00	3.24	1.94	0.35	2.26	2.47
CANVASBACK	1.13	0.34	0.00	0.29	0.79	0.44
GREATER SCAUP	0.09	0.08	0.00	0.00	0.06	0.06
LESSER SCAUP	3.20	2.55	0.15	0.34	2.65	2.32
RING-NECKED DUCK	5.01	3.78	0.15	0.24	3.04	2.40
GOLDENEYES	0.03	0.14	2.46	2.83	0.22	0.26
BUFFLEHEAD	0.33	0.39	0.30	0.78	0.43	0.42
RUDDY DUCK	0.20	0.06	0.00	0.00	0.19	0.13
LONG-TAILED DUCK	0.00	0.00	0.00	0.00	0.00	0.00
EIDERS	0.00	0.00	0.00	0.00	0.00	0.00
SCOTERS	0.00	0.00	0.00	0.00	0.00	0.00
HOODED MERGANSERS	0.35	0.34	0.15	0.00	0.25	0.26
OTHER MERGANSERS	0.04	0.02	0.15	1.34	0.07	0.06
OTHER DUCKS	0.53	0.96	0.00	0.00	0.25	0.45
TOTAL	100.00	100.00	100.00	100.00	100.00	100.00
DUCK HARVEST (RETRIEVED KILL)	1,363,411	1,483,650	40,337	42,338	3,240,136	3,446,501
PERCENT CHANGE		9%		5%		6%
SEASONAL DUCK HARVEST PER ADULT HUNTER	9.24	9.74	4.03	3.31	7.21	7.67
PERCENT CHANGE		5%		-18%		6%
-----						
GOOSE SPECIES COMPOSITION (%)						
CANADA GOOSE	25.78	28.05	99.54	100.00	74.72	68.42
SNOW GOOSE	35.68	36.25	0.46	0.00	11.88	15.94
BLUE GOOSE	8.40	9.53	0.00	0.00	4.73	6.44
WHITE-FRONTED GOOSE	25.24	17.56	0.00	0.00	7.22	5.60
BRANT	0.00	0.00	0.00	0.00	0.03	0.00
OTHER GEESE	4.89	8.61	0.00	0.00	1.43	3.60
TOTAL	100.00	100.00	100.00	100.00	100.00	100.00
GOOSE HARVEST (RETRIEVED KILL)	204,650	317,746	25,695	49,006	999,262	1,189,751
PERCENT CHANGE		55%		91%		19%
SEASONAL GOOSE HARVEST PER ADULT HUNTER	1.31	2.19	2.45	5.07	2.58	3.15
PERCENT CHANGE		67%		107%		22%
-----						
COOT HARVEST (RETRIEVED KILL)	6,850	5,687	0	120	25,979	15,111
PERCENT CHANGE		-17%		++		-42%
SEASONAL COOT HARVEST PER ADULT HUNTER	0.05	0.04	0.00	0.01	0.07	0.04
PERCENT CHANGE		-20%		++		-43%
-----						
TOTAL HUNTER DAYS	960,556	1,119,837	48,842	70,835	2,656,005	3,043,047
PERCENT CHANGE		17%		45%		15%
DAYS PER ADULT HUNTER	6.49	7.14	4.67	7.13	7.13	8.00
PERCENT CHANGE		10%		53%		12%
-----						
TOTAL DUCK STAMPS SOLD	144,369	154,871	9,644	9,159	356,097	364,538
PERCENT CHANGE		7%		-5%		2%
PERCENT SOLD TO NON-HUNTERS	5.51	6.70	0.01	0.08	3.63	3.89
-----						
TOTAL ADULT HUNTERS (POTENTIAL)	136,414	144,495	9,643	9,152	343,176	350,367
PERCENT CHANGE		6%		-5%		2%
PERCENT ACTIVE ADULT HUNTERS	81.0	79.8	77.8	80.7	81.8	83.0
PERCENT SUCCESSFUL ADULT HUNTERS	67.0	67.2	61.7	61.1	67.8	69.6
-----						
SAMPLE SIZES						
DUCK WINGS	6,751	4,931	399	755	20,860	18,236
GOOSE TAILS	796	825	225	196	5,179	5,387
QUESTIONNAIRES	785	637	72	430	3,280	4,535

TABLE 6. --PERCENTAGE SPECIES COMPOSITION OF WATERFOWL HARVESTED, TOTAL NUMBERS HARVESTED, AND ADULT HUNTER STATISTICS IN THE PACIFIC FLYWAY DURING THE 2000 AND 2001 HUNTING SEASONS.

	ARIZONA		CALIFORNIA		COLORADO		IDAHO	
	2000	2001	2000	2001	2000	2001	2000	2001
<b>DUCK SPECIES COMPOSITION (%)</b>								
MALLARD	29.77	35.56	31.98	28.54	66.01	78.68	73.42	76.54
DOMESTIC MALLARD	0.00	0.00	0.12	0.12	0.00	0.18	0.14	0.08
BLACK DUCK	0.00	0.00	0.00	0.00	0.00	0.00	0.00	0.00
BLACK X MALLARD	0.00	0.00	0.00	0.00	0.00	0.00	0.00	0.00
MOTTLED DUCK	0.00	0.00	0.00	0.00	0.00	0.00	0.00	0.00
GADWALL	11.81	5.34	6.29	6.07	5.03	4.35	2.63	3.36
AMERICAN WIGEON	11.49	12.50	11.41	14.19	6.69	5.87	7.89	8.16
GREEN-WINGED TEAL	13.45	22.77	20.86	18.96	9.51	3.59	5.25	5.17
BLUE-WINGED/CINNAMON TEAL	3.24	2.97	3.16	3.37	2.95	2.31	0.85	0.12
NORTHERN SHOVELER	5.42	3.12	8.81	11.10	0.00	0.00	1.27	1.03
PINTAIL	4.11	5.91	8.60	8.39	0.86	0.47	2.62	1.96
WOOD DUCK	0.33	0.29	3.23	2.94	0.29	0.44	1.69	0.94
REDHEAD	2.56	0.00	0.48	0.52	0.31	0.00	0.61	0.09
CANVASBACK	1.62	0.51	1.07	0.64	0.00	0.00	0.14	0.00
GREATER SCAUP	0.00	0.00	0.26	0.63	0.31	0.00	0.05	0.00
LESSER SCAUP	0.33	0.54	1.16	1.40	0.88	0.00	0.36	0.28
RING-NECKED DUCK	7.89	6.24	1.30	1.69	4.74	2.24	0.60	0.85
GOLDENEYES	0.33	0.25	0.40	0.49	1.50	0.44	1.75	0.83
BUFFLEHEAD	1.95	1.93	0.44	0.50	0.62	0.00	0.09	0.18
RUDDY DUCK	0.00	0.00	0.14	0.22	0.00	0.00	0.07	0.09
LONG-TAILED DUCK	0.00	0.00	0.00	0.00	0.00	0.00	0.00	0.00
EIDERS	0.00	0.00	0.00	0.00	0.00	0.00	0.00	0.00
SCOTERS	0.00	0.00	0.01	0.03	0.00	0.00	0.00	0.00
HOODED MERGANSERS	0.33	0.00	0.16	0.17	0.00	0.00	0.35	0.13
OTHER MERGANSERS	1.64	0.51	0.10	0.02	0.00	0.95	0.20	0.21
OTHER DUCKS	3.73	1.56	0.02	0.01	0.31	0.47	0.00	0.00
TOTAL	100.00	100.00	100.00	100.00	100.00	100.00	100.00	100.00
DUCK HARVEST (RETRIEVED KILL)	57,984	41,915	993,474	964,183	16,071	36,258	176,525	190,493
PERCENT CHANGE		-28%		-3%		126%		8%
SEASONAL DUCK HARVEST PER ADULT HUNTER	6.28	5.34	13.30	12.88	3.06	7.41	6.08	7.33
PERCENT CHANGE		-15%		-3%		142%		21%
<b>GOOSE SPECIES COMPOSITION (%)</b>								
CANADA GOOSE	70.64	80.38	29.63	27.75	100.00	100.00	100.00	99.26
SNOW GOOSE	15.87	0.00	36.32	30.71	0.00	0.00	0.00	0.59
BLUE GOOSE	0.00	0.00	0.00	0.20	0.00	0.00	0.00	0.00
WHITE-FRONTED GOOSE	0.00	6.75	24.26	25.79	0.00	0.00	0.00	0.00
BRANT	0.00	0.00	2.06	2.86	0.00	0.00	0.00	0.00
OTHER GEESE	13.49	12.87	7.73	12.69	0.00	0.00	0.00	0.15
TOTAL	100.00	100.00	100.00	100.00	100.00	100.00	100.00	100.00
GOOSE HARVEST (RETRIEVED KILL)	5,672	2,793	87,334	92,152	8,186	7,097	87,705	50,963
PERCENT CHANGE		-51%		6%		-13%		-42%
SEASONAL GOOSE HARVEST PER ADULT HUNTER	0.77	0.65	1.18	1.32	1.78	1.26	3.04	1.86
PERCENT CHANGE		-16%		12%		-29%		-39%
<b>COOT HARVEST (RETRIEVED KILL)</b>								
COOT HARVEST (RETRIEVED KILL)	177	211	9,255	7,749	0	72	0	261
PERCENT CHANGE		19%		-16%		++		++
SEASONAL COOT HARVEST PER ADULT HUNTER	0.02	0.03	0.12	0.10	0.00	0.01	0.00	0.01
PERCENT CHANGE		50%		-17%		++		++
<b>TOTAL HUNTER DAYS</b>								
TOTAL HUNTER DAYS	41,315	43,771	671,124	756,947	30,109	41,736	222,529	189,203
PERCENT CHANGE		6%		13%		39%		-15%
DAYS PER ADULT HUNTER	5.84	6.88	8.44	9.37	5.07	6.31	7.54	7.56
PERCENT CHANGE		18%		11%		24%		0%
<b>TOTAL DUCK STAMPS SOLD</b>								
TOTAL DUCK STAMPS SOLD	7,085	6,197	79,288	78,820	6,289	7,050	27,408	23,258
PERCENT CHANGE		-13%		-1%		12%		-15%
PERCENT SOLD TO NON-HUNTERS	8.17	5.55	7.76	5.69	13.22	13.68	1.00	1.00
<b>TOTAL ADULT HUNTERS (POTENTIAL)</b>								
TOTAL ADULT HUNTERS (POTENTIAL)	6,506	5,853	73,135	74,335	5,458	6,086	27,134	23,025
PERCENT CHANGE		-10%		2%		12%		-15%
PERCENT ACTIVE ADULT HUNTERS	89.7	83.2	89.2	88.9	81.8	80.4	85.9	82.5
PERCENT SUCCESSFUL ADULT HUNTERS	70.0	64.2	74.9	76.3	61.5	73.5	71.4	68.3
<b>SAMPLE SIZES</b>								
DUCK WINGS	311	368	7,988	9,734	335	229	2,694	2,052
GOOSE TAILS	31	13	403	508	64	68	739	645
QUESTIONNAIRES	87	143	444	679	55	92	241	429

TABLE 6. --PERCENTAGE SPECIES COMPOSITION OF WATERFOWL HARVESTED, TOTAL NUMBERS HARVESTED, AND ADULT HUNTER STATISTICS IN THE PACIFIC FLYWAY DURING THE 2000 AND 2001 HUNTING SEASONS.

	MONTANA		NEVADA		NEW MEXICO		OREGON	
	2000	2001	2000	2001	2000	2001	2000	2001
<b>DUCK SPECIES COMPOSITION (%)</b>								
MALLARD	76.91	78.97	31.06	35.69	63.93	52.75	49.70	47.44
DOMESTIC MALLARD	0.05	0.00	0.00	0.00	0.00	0.00	0.03	0.30
BLACK DUCK	0.00	0.00	0.00	0.00	0.00	0.00	0.00	0.00
BLACK X MALLARD	0.00	0.00	0.00	0.00	0.00	0.00	0.00	0.00
MOTTLED DUCK	0.00	0.00	0.00	0.00	0.00	0.00	0.00	0.00
GADWALL	3.17	2.22	9.22	7.75	7.06	11.84	3.57	3.50
AMERICAN WIGEON	5.50	7.04	7.13	6.02	14.50	21.90	11.47	15.09
GREEN-WINGED TEAL	2.52	3.05	33.16	25.40	8.78	6.59	12.27	9.32
BLUE-WINGED/CINNAMON TEAL	0.61	1.04	3.51	2.56	0.00	0.00	0.19	0.17
NORTHERN SHOVELER	0.60	0.54	4.31	10.24	2.10	0.00	3.33	5.62
PINTAIL	1.62	1.30	6.79	5.98	0.00	5.07	6.92	5.83
WOOD DUCK	0.05	0.26	0.59	0.19	0.76	0.00	2.44	4.60
REDHEAD	0.35	0.45	1.15	0.69	0.00	0.00	0.39	0.03
CANVASBACK	0.59	0.09	0.42	0.11	0.00	0.00	0.57	0.18
GREATER SCAUP	0.09	0.00	0.00	0.00	0.00	0.00	2.48	0.86
LESSER SCAUP	2.45	2.69	0.25	0.29	0.00	0.00	1.85	1.39
RING-NECKED DUCK	0.18	0.57	1.15	0.67	0.00	1.85	1.82	1.38
GOLDENEYES	4.28	1.21	0.08	0.38	0.00	0.00	0.54	0.55
BUFFLEHEAD	0.23	0.19	0.34	2.55	0.00	0.00	1.95	2.92
RUDDY DUCK	0.19	0.05	0.51	1.31	0.00	0.00	0.03	0.06
LONG-TAILED DUCK	0.00	0.00	0.00	0.00	0.00	0.00	0.00	0.00
EIDERS	0.00	0.00	0.00	0.00	0.00	0.00	0.00	0.00
SCOTERS	0.00	0.00	0.00	0.00	0.00	0.00	0.03	0.00
HOODED MERGANSERS	0.16	0.09	0.17	0.00	0.00	0.00	0.29	0.39
OTHER MERGANSERS	0.45	0.26	0.17	0.15	2.86	0.00	0.13	0.38
OTHER DUCKS	0.00	0.00	0.00	0.00	0.00	0.00	0.03	0.00
TOTAL	100.00	100.00	100.00	100.00	100.00	100.00	100.00	100.00
DUCK HARVEST (RETRIEVED KILL)	84,363	93,501	36,734	33,740	9,146	2,465	304,791	275,842
PERCENT CHANGE		11%		-8%		-73%		-9%
SEASONAL DUCK HARVEST PER ADULT HUNTER	5.84	5.79	4.95	3.26	13.98	3.40	8.73	8.06
PERCENT CHANGE		-1%		-34%		-76%		-8%
<b>GOOSE SPECIES COMPOSITION (%)</b>								
CANADA GOOSE	91.03	96.55	96.11	95.25	100.00	100.00	83.19	84.58
SNOW GOOSE	5.55	2.36	1.67	2.90	0.00	0.00	11.13	13.15
BLUE GOOSE	0.00	0.00	0.00	0.00	0.00	0.00	0.00	0.00
WHITE-FRONTED GOOSE	1.16	0.00	0.56	0.00	0.00	0.00	5.69	2.27
BRANT	0.00	0.00	0.00	0.00	0.00	0.00	0.00	0.00
OTHER GEESE	2.26	1.10	1.67	1.85	0.00	0.00	0.00	0.00
TOTAL	100.00	100.00	100.00	100.00	100.00	100.00	100.00	100.00
GOOSE HARVEST (RETRIEVED KILL)	28,370	35,968	4,861	845	393	1,782	77,174	79,343
PERCENT CHANGE		27%		-83%		353%		3%
SEASONAL GOOSE HARVEST PER ADULT HUNTER	1.65	2.43	0.85	0.10	0.39	2.33	2.25	2.27
PERCENT CHANGE		47%		-88%		497%		1%
<b>COOT HARVEST (RETRIEVED KILL)</b>								
COOT HARVEST (RETRIEVED KILL)	0	184	3,758	0	0	49	3,948	633
PERCENT CHANGE		++		-100%		++		-84%
SEASONAL COOT HARVEST PER ADULT HUNTER	0.00	0.01	0.44	0.00	0.00	0.07	0.11	0.02
PERCENT CHANGE		++		-100%		++		-82%
<b>TOTAL HUNTER DAYS</b>								
TOTAL HUNTER DAYS	63,043	92,921	54,075	40,247	3,725	5,982	325,521	276,375
PERCENT CHANGE		47%		-26%		61%		-15%
DAYS PER ADULT HUNTER	4.56	6.34	6.34	5.26	6.24	8.87	8.98	8.00
PERCENT CHANGE		39%		-17%		42%		-11%
<b>TOTAL DUCK STAMPS SOLD</b>								
TOTAL DUCK STAMPS SOLD	13,067	13,801	7,997	7,239	1,038	1,055	34,354	33,064
PERCENT CHANGE		6%		-9%		2%		-4%
PERCENT SOLD TO NON-HUNTERS	2.63	2.34	1.96	2.79	47.05	41.21	2.91	3.85
<b>TOTAL ADULT HUNTERS (POTENTIAL)</b>								
TOTAL ADULT HUNTERS (POTENTIAL)	12,723	13,478	7,840	7,037	550	620	33,354	31,791
PERCENT CHANGE		6%		-10%		13%		-5%
PERCENT ACTIVE ADULT HUNTERS	78.1	83.1	86.3	85.4	83.3	80.0	88.3	81.1
PERCENT SUCCESSFUL ADULT HUNTERS	61.2	67.1	66.3	54.5	80.5	64.4	74.7	63.1
<b>SAMPLE SIZES</b>								
DUCK WINGS	1,173	1,071	1,100	1,384	64	59	3,299	2,695
GOOSE TAILS	259	268	180	212	76	5	526	563
QUESTIONNAIRES	128	781	102	55	6	30	300	418

TABLE 6. --PERCENTAGE SPECIES COMPOSITION OF WATERFOWL HARVESTED, TOTAL NUMBERS HARVESTED, AND ADULT HUNTER STATISTICS IN THE PACIFIC FLYWAY DURING THE 2000 AND 2001 HUNTING SEASONS.

	UTAH		WASHINGTON		WYOMING		FLYWAY TOTAL	
	2000	2001	2000	2001	2000	2001	2000	2001
<b>DUCK SPECIES COMPOSITION (%)</b>								
MALLARD	32.34	43.54	62.91	60.43	73.88	65.33	45.10	44.77
DOMESTIC MALLARD	0.09	0.05	0.06	0.08	0.00	0.00	0.09	0.12
BLACK DUCK	0.00	0.00	0.00	0.00	0.00	0.00	0.00	0.00
BLACK X MALLARD	0.00	0.00	0.00	0.00	0.00	0.00	0.00	0.00
MOTTLED DUCK	0.00	0.00	0.00	0.00	0.00	0.00	0.00	0.00
GADWALL	7.55	9.79	3.79	3.24	6.72	4.25	5.37	5.22
AMERICAN WIGEON	8.36	7.87	10.60	15.54	11.94	9.43	10.44	12.81
GREEN-WINGED TEAL	25.61	17.72	9.77	6.46	2.99	10.96	16.10	13.69
BLUE-WINGED/CINNAMON TEAL	1.25	0.71	0.15	0.07	0.75	2.43	1.79	1.79
NORTHERN SHOVELER	5.58	3.64	1.43	1.28	0.00	2.89	5.35	6.51
PINTAIL	9.06	7.41	6.10	3.66	2.99	4.71	7.01	6.15
WOOD DUCK	0.17	0.15	1.08	0.65	0.00	0.00	2.10	2.12
REDHEAD	1.29	1.20	0.28	1.10	0.00	0.00	0.56	0.55
CANVASBACK	1.43	0.61	0.17	0.21	0.75	0.00	0.77	0.41
GREATER SCAUP	0.09	0.20	0.41	0.83	0.00	0.00	0.53	0.53
LESSER SCAUP	0.94	0.83	0.68	1.36	0.00	0.00	1.09	1.24
RING-NECKED DUCK	0.48	1.20	1.15	1.81	0.00	0.00	1.36	1.58
GOLDENEYES	2.77	1.65	0.41	0.56	0.00	0.00	0.86	0.66
BUFFLEHEAD	0.36	1.14	0.77	1.95	0.00	0.00	0.70	1.10
RUDDY DUCK	0.35	1.19	0.03	0.02	0.00	0.00	0.12	0.24
LONG-TAILED DUCK	0.00	0.00	0.00	0.00	0.00	0.00	0.00	0.00
EIDERS	0.00	0.00	0.00	0.00	0.00	0.00	0.00	0.00
SCOTERS	0.00	0.00	0.07	0.31	0.00	0.00	0.02	0.07
HOODED MERGANSERS	0.04	0.05	0.13	0.24	0.00	0.00	0.18	0.18
OTHER MERGANSERS	2.20	1.06	0.03	0.21	0.00	0.00	0.33	0.24
OTHER DUCKS	0.04	0.00	0.01	0.00	0.00	0.00	0.12	0.05
TOTAL	100.00	100.00	100.00	100.00	100.00	100.00	100.00	100.00
DUCK HARVEST (RETRIEVED KILL)	187,941	191,398	403,054	332,754	2,582	5,639	2,272,665	2,168,187
PERCENT CHANGE		2%		-17%		118%		-5%
SEASONAL DUCK HARVEST PER ADULT HUNTER	6.89	7.28	10.56	9.26	2.80	5.77	9.43	9.26
PERCENT CHANGE		6%		-12%		106%		-2%
<b>GOOSE SPECIES COMPOSITION (%)</b>								
CANADA GOOSE	99.00	99.50	94.79	92.73	100.00	100.00	79.22	75.94
SNOW GOOSE	0.50	0.50	1.84	5.61	0.00	0.00	11.11	12.20
BLUE GOOSE	0.00	0.00	0.00	0.00	0.00	0.00	0.00	0.05
WHITE-FRONTED GOOSE	0.00	0.00	3.37	0.00	0.00	0.00	7.11	7.26
BRANT	0.00	0.00	0.00	1.66	0.00	0.00	0.45	1.02
OTHER GEESE	0.50	0.00	0.00	0.00	0.00	0.00	2.10	3.53
TOTAL	100.00	100.00	100.00	100.00	100.00	100.00	100.00	100.00
GOOSE HARVEST (RETRIEVED KILL)	26,567	23,874	72,119	58,308	399	1,772	398,781	354,896
PERCENT CHANGE		-10%		-19%		344%		-11%
SEASONAL GOOSE HARVEST PER ADULT HUNTER	1.05	1.04	1.98	1.57	0.60	1.90	1.67	1.53
PERCENT CHANGE		-1%		-21%		217%		-8%
<b>COOT HARVEST (RETRIEVED KILL)</b>								
COOT HARVEST (RETRIEVED KILL)	331	1,721	752	866	0	7	18,221	11,753
PERCENT CHANGE		420%		15%		++		-35%
SEASONAL COOT HARVEST PER ADULT HUNTER	0.01	0.06	0.02	0.02	0.00	0.01	0.07	0.05
PERCENT CHANGE		500%		0%		++		-29%
<b>TOTAL HUNTER DAYS</b>								
TOTAL HUNTER DAYS	252,893	248,657	317,022	283,466	3,493	5,121	1,984,849	1,984,426
PERCENT CHANGE		-2%		-11%		47%		-0%
DAYS PER ADULT HUNTER	8.51	8.09	8.17	7.75	3.16	5.59	7.91	8.11
PERCENT CHANGE		-5%		-5%		77%		3%
<b>TOTAL DUCK STAMPS SOLD</b>								
TOTAL DUCK STAMPS SOLD	27,885	28,850	37,084	35,118	1,108	948	242,603	235,400
PERCENT CHANGE		3%		-5%		-14%		-3%
PERCENT SOLD TO NON-HUNTERS	1.97	2.02	3.74	4.13	8.18	11.19	4.89	4.42
<b>TOTAL ADULT HUNTERS (POTENTIAL)</b>								
TOTAL ADULT HUNTERS (POTENTIAL)	27,336	28,267	35,697	33,668	1,017	842	230,750	225,002
PERCENT CHANGE		3%		-6%		-17%		-2%
PERCENT ACTIVE ADULT HUNTERS	88.1	89.2	86.6	86.9	77.8	85.9	87.2	86.0
PERCENT SUCCESSFUL ADULT HUNTERS	66.0	66.2	73.5	72.7	60.8	73.5	71.6	70.1
<b>SAMPLE SIZES</b>								
DUCK WINGS	2,299	1,982	4,561	4,790	134	133	23,958	24,497
GOOSE TAILS	200	199	652	753	28	22	3,158	3,256
QUESTIONNAIRES	268	600	752	1,118	27	71	2,410	4,416

TABLE 7. --PERCENTAGE SPECIES COMPOSITION OF WATERFOWL HARVESTED, TOTAL NUMBERS HARVESTED, AND ADULT HUNTER STATISTICS IN ALASKA AND FOR THE ENTIRE UNITED STATES DURING THE 2000 AND 2001 HUNTING SEASONS.

	ALASKA		UNITED STATES TOTAL	
	2000	2001	2000	2001
<b>DUCK SPECIES COMPOSITION (%)</b>				
MALLARD	25.76	38.19	37.17	37.44
DOMESTIC MALLARD	0.00	0.00	0.15	0.14
BLACK DUCK	0.00	0.00	1.17	0.96
BLACK X MALLARD	0.00	0.00	0.17	0.13
MOTTLED DUCK	0.00	0.00	0.40	0.56
GADWALL	0.81	2.20	13.44	11.26
AMERICAN WIGEON	21.65	22.68	4.61	5.06
GREEN-WINGED TEAL	13.60	13.71	11.08	10.28
BLUE-WINGED/CINNAMON TEAL	0.00	0.31	7.42	8.81
NORTHERN SHOVELER	4.76	3.32	3.11	4.10
PINTAIL	23.87	15.00	3.24	3.20
WOOD DUCK	0.00	0.00	8.51	7.88
REDHEAD	0.23	0.00	0.88	1.08
CANVASBACK	0.35	0.00	0.68	0.26
GREATER SCAUP	0.79	0.45	0.28	0.23
LESSER SCAUP	1.04	0.65	2.29	2.79
RING-NECKED DUCK	0.71	0.59	2.97	3.00
GOLDENEYES	4.61	1.46	0.34	0.36
BUFFLEHEAD	1.39	1.34	0.80	0.94
RUDDY DUCK	0.00	0.00	0.15	0.15
LONG-TAILED DUCK	0.00	0.00	0.07	0.07
EIDERS	0.00	0.00	0.10	0.15
SCOTERS	0.28	0.10	0.12	0.19
HOODED MERGANSERS	0.09	0.00	0.59	0.59
OTHER MERGANSERS	0.07	0.00	0.18	0.19
OTHER DUCKS	0.00	0.00	0.07	0.15
TOTAL	100.00	100.00	100.00	100.00
DUCK HARVEST (RETRIEVED KILL)	70,606	61,869	15,326,485	13,933,728
PERCENT CHANGE		-12%		-9%
SEASONAL DUCK HARVEST PER ADULT HUNTER	6.84	6.27	9.23	8.36
PERCENT CHANGE		-8%		-9%
<b>GOOSE SPECIES COMPOSITION (%)</b>				
CANADA GOOSE	66.41	72.08	76.35	74.83
SNOW GOOSE	0.76	0.00	9.81	11.91
BLUE GOOSE	0.00	0.00	4.28	4.79
WHITE-FRONTED GOOSE	15.27	5.88	7.78	5.11
BRANT	16.79	22.05	0.72	1.14
OTHER GEESE	0.76	0.00	1.05	2.22
TOTAL	100.00	100.00	100.00	100.00
GOOSE HARVEST (RETRIEVED KILL)	6,639	8,616	3,057,366	3,225,322
PERCENT CHANGE		30%		5%
SEASONAL GOOSE HARVEST PER ADULT HUNTER	0.67	0.91	1.91	2.03
PERCENT CHANGE		36%		6%
<b>COOT HARVEST (RETRIEVED KILL)</b>				
COOT HARVEST (RETRIEVED KILL)	41	35	194,258	142,650
PERCENT CHANGE		-15%		-27%
SEASONAL COOT HARVEST PER ADULT HUNTER	0.00	0.00	0.11	0.08
PERCENT CHANGE		0%		-27%
TOTAL HUNTER DAYS	53,007	54,659	13,879,772	14,999,049
PERCENT CHANGE		3%		8%
DAYS PER ADULT HUNTER	4.89	5.03	8.17	8.80
PERCENT CHANGE		3%		8%
TOTAL DUCK STAMPS SOLD	10,134	10,068	1,662,667	1,659,485
PERCENT CHANGE		-1%		-0%
PERCENT SOLD TO NON-HUNTERS	1.67	0.74	4.68	4.20
TOTAL ADULT HUNTERS (POTENTIAL)	9,965	9,993	1,584,805	1,589,714
PERCENT CHANGE		0%		0%
PERCENT ACTIVE ADULT HUNTERS	80.3	77.8	86.3	87.0
PERCENT SUCCESSFUL ADULT HUNTERS	64.0	62.8	71.3	71.8
<b>SAMPLE SIZES</b>				
DUCK WINGS	894	807	89,526	83,031
GOOSE TAILS	131	68	18,008	20,138
QUESTIONNAIRES	483	554	20,792	34,849

TABLE 8A. Summary of hunter activity and harvest data\* for long-term special September teal/duck seasons: 2000 vs. 2001.

STATE	Final 2000 data							Preliminary 2001 data							
	Active adult hunters	Total days afield	Total ducks bagged	% G.-W. Teal	% BW+ Cinn. Teal	% other ducks	# of wings rec'd.	Active adult hunters	Total days afield	Total ducks bagged	% G.-W. Teal	% BW+ Cinn. Teal	% other ducks	# of wings rec'd.	
SEPTEMBER TEAL SEASON															
DELAWARE	700	2,140	3,700	68.0	30.0	2.0	50	790	2,490	2,360	81.8	18.2	0.0	33	
GEORGIA	2,290	7,850	8,230	16.7	83.3	0.0	18	1,630	4,310	2,620	39.3	60.7	0.0	28	
MARYLAND	2,350	4,220	6,970	66.0	34.0	0.0	47	2,100	6,990	9,210	46.4	51.8	1.8	56	
N. CAROLINA	2,190	4,980	6,250	25.0	75.0	0.0	12	1,830	4,560	4,100	0.0	100.0	0.0	8	
S. CAROLINA	1,280	3,520	3,440	0.0	100.0	0.0	11	1,610	3,470	2,530	0.0	86.7	13.3	15	
VIRGINIA	1,550	4,630	3,360	41.7	58.3	0.0	12	1,360	3,530	2,290	40.0	60.0	0.0	5	
SUBTOTAL	10,360	27,340	31,950	35.8	63.9	0.2	150	9,320	25,350	23,110	35.3	62.5	2.2	145	
ALABAMA	1,760	4,280	7,410	1.6	96.8	1.6	63	3,210	6,780	9,440	4.5	90.9	4.5	22	
ARKANSAS	5,630	10,360	21,070	7.4	91.7	0.9	108	4,990	5,880	9,990	6.1	93.9	0.0	33	
ILLINOIS	8,210	17,030	22,210	6.1	93.9	0.0	98	9,850	19,030	16,110	7.6	89.4	3.0	66	
INDIANA	4,000	5,690	6,720	8.0	92.0	0.0	25	4,110	6,040	5,400	10.5	89.5	0.0	19	
LOUISIANA	42,150	155,280	374,180	3.9	95.9	0.1	888	37,890	151,520	346,580	3.1	96.7	0.2	850	
MISSISSIPPI	3,610	3,950	5,680	0.0	100.0	0.0	29	2,300	1,670	2,820	0.0	100.0	0.0	21	
MISSOURI	9,080	18,430	28,450	5.9	94.1	0.0	119	11,620	21,830	25,990	8.0	91.2	0.7	137	
OHIO	6,170	10,510	5,850	21.7	78.3	0.0	69	5,860	11,010	6,520	3.9	96.1	0.0	51	
SUBTOTAL	80,600	225,540	471,570	4.5	95.3	0.2	1,399	79,830	223,750	422,850	3.7	95.8	0.5	1,199	
COLORADO	3,210	4,130	5,370	32.4	67.6	0.0	34	3,760	5,250	7,030	52.9	47.1	0.0	34	
KANSAS	5,580	11,870	20,560	14.3	85.7	0.0	217	6,650	15,350	23,760	14.3	85.7	0.0	70	
NEBRASKA	550	1,550	4,490	14.0	86.0	0.0	93	2,630	4,170	7,050	9.5	90.5	0.0	74	
NEW MEXICO	530	600	860	22.8	77.2	0.0	57	550	610	530	46.2	53.8	0.0	26	
OKLAHOMA	3,930	3,690	5,540	30.4	69.6	0.0	125	2,760	3,130	3,890	14.4	85.6	0.0	111	
TEXAS	26,240	49,180	95,450	9.4	90.5	0.1	830	28,130	55,260	121,360	8.7	91.3	0.0	698	
SUBTOTAL	40,040	71,020	132,260	12.2	87.7	0.1	1,356	44,460	83,770	163,610	11.7	88.3	0.0	1,013	
U. S. TOTAL	131,000	323,900	635,780	7.7	92.2	0.1	2,905	133,610	332,870	609,570	7.1	92.5	0.4	2,357	
EARLY SEPTEMBER SEASONS															
FLORIDA	--	--	14,640	0.0	69.4	30.6	133	--	--	10,930	0.0	66.4	33.6	87	
KENTUCKY	--	--	22,150	0.0	36.1	63.9	60	--	--	15,370	0.0	20.8	79.2	46	
TENNESSEE	--	--	47,670	0.3	55.8	44.0	108	--	--	18,880	0.0	30.3	69.7	78	
TOTAL	--	--	84,450	0.2	53.0	46.9	301	--	--	45,180	0.0	35.8	64.2	211	

\* September season days hunted and ducks bagged adjusted for response bias; active hunters unadjusted (overestimated).

TABLE 8B. Summary of harvest data with species totals and age ratios for long-term special September teal/duck seasons: 2000 vs. 2001.

STATE	Final 2000 data							Preliminary 2001 data						
	<- Number bagged by species ->				<- Immatures/Adult ->			<- Number bagged by species ->				<- Immatures/Adult ->		
	G-W Teal	BW+C. Teal	Wood Duck	Other ducks	G-W Teal	BW+C. Teal	Wood Duck	G-W Teal	BW+C. Teal	Wood Duck	Other ducks	G-W Teal	BW+C. Teal	Wood Duck
SEPTEMBER TEAL SEASON														
DELAWARE	2,520	1,110	0	70	0.79	0.50	--	1,930	430	0	0	0.35	1.00	--
GEORGIA	1,370	6,860	0	0	0.00	2.75	--	1,030	1,590	0	0	10.04	1.12	--
MARYLAND	4,600	2,370	0	0	0.37	1.03	--	4,280	4,770	0	160	0.49	1.43	--
N. CAROLINA	1,560	4,690	0	0	0.00	0.80	--	0	4,100	0	0	--	1.67	--
S. CAROLINA	0	3,440	0	0	--	0.69	--	0	2,190	340	0	--	1.60	*
VIRGINIA	1,400	1,960	0	0	0.67	0.75	--	920	1,380	0	0	1.00	*	--
SUBTOTAL	11,450	20,430	0	70	0.34	1.15	--	8,160	14,460	340	160	0.68	1.73	*
ALABAMA	120	7,170	120	0	0.00	0.69	0.00	430	8,580	0	430	*	3.00	--
ARKANSAS	1,560	19,320	200	0	0.33	1.52	*	610	9,380	0	0	0.00	4.17	--
ILLINOIS	1,360	20,850	0	0	0.71	1.53	--	1,220	14,400	490	0	0.25	3.92	*
INDIANA	540	6,180	0	0	1.00	0.77	--	570	4,830	0	0	*	3.25	--
LOUISIANA	14,750	359,010	0	420	0.74	0.85	--	10,600	335,170	0	820	1.40	1.43	--
MISSISSIPPI	0	5,680	0	0	--	0.93	--	0	2,820	0	0	--	1.63	--
MISSOURI	1,670	26,780	0	0	0.40	1.49	--	2,090	23,710	190	0	1.75	1.06	*
OHIO	1,270	4,580	0	0	1.50	0.74	--	260	6,260	0	0	*	2.50	--
SUBTOTAL	21,270	449,570	320	420	0.70	0.92	1.65	15,780	405,150	680	1,250	1.33	1.53	*
COLORADO	1,740	3,630	0	0	1.20	1.93	--	3,720	3,310	0	0	7.49	1.67	--
KANSAS	2,940	17,630	0	0	1.07	1.86	--	3,390	20,370	0	0	3.45	3.11	--
NEBRASKA	630	3,860	0	0	4.50	1.72	--	670	6,380	0	0	2.51	3.02	--
NEW MEXICO	200	660	0	0	3.36	9.22	--	240	280	0	0	2.68	10.67	--
OKLAHOMA	1,680	3,850	0	0	0.65	1.65	--	560	3,330	0	0	2.20	2.32	--
TEXAS	8,970	86,360	120	0	0.76	1.23	*	10,610	110,750	0	0	2.39	1.70	*
SUBTOTAL	16,160	115,990	120	0	0.90	1.37	*	19,190	144,420	0	0	3.03	1.90	*
U. S. TOTAL	48,880	585,990	440	490	0.65	1.01	2.63	43,130	564,030	1,020	1,410	1.63	1.62	1.77
EARLY SEPTEMBER SEASONS														
FLORIDA	0	10,150	4,480	0	--	0.58	0.40	0	7,250	3,210	460	--	0.87	1.46
KENTUCKY	0	8,000	14,150	0	--	1.73	1.51	0	3,200	12,170	0	--	5.00	5.79
TENNESSEE	130	26,590	20,960	0	0.00	1.58	3.14	0	5,730	13,150	0	--	1.32	3.18
TOTAL	130	44,740	39,590	0	--	1.28	1.85	0	16,180	28,530	460	--	1.35	3.57

\* No adults recorded in sample.

TABLE 9. -- PERCENTAGE SPECIES COMPOSITION OF WATERFOWL HARVESTED, TOTAL NUMBERS HARVESTED, AND TOTAL MIGRATORY BIRD HUNTING PERMITS SOLD BY PROVINCE IN CANADA DURING THE 2000 AND 2001 HUNTING SEASONS (estimates courtesy of the Canadian Wildlife Service).

SPECIES, ETC.	NEWFOUNDLAND		PRINCE EDWARD ISL.		NOVA SCOTIA		NEW BRUNSWICK		QUEBEC		ONTARIO		MANITOBA	
	2000	2001	2000	2001	2000	2001	2000	2001	2000	2001	2000	2001	2000	2001
<b>DUCK SPECIES COMPOSITION (%)</b>														
MALLARD (includes domestic)	2.4	1.2	14.1	6.7	7.9	9.8	11.4	16.9	33.4	37.0	44.2	45.7	52.8	54.7
AMERICAN BLACK DUCK	34.0	33.5	51.5	53.1	63.5	45.7	34.5	30.9	17.8	17.9	5.4	5.3	0.1	0.2
GADWALL	0.0	0.0	9.9	0.0	0.6	0.0	0.0	0.5	1.1	1.1	0.9	0.7	7.0	6.0
WIGEON	0.1	0.2	4.6	16.0	0.5	1.1	3.9	4.4	1.2	1.6	1.9	1.8	3.6	3.4
GREEN-WINGED TEAL	11.2	9.4	10.5	20.1	9.4	12.0	20.7	13.8	20.1	13.3	6.6	5.8	5.9	4.1
BLUE-WINGED/CINNAMON TEAL	0.5	0.5	1.9	3.0	0.2	0.6	4.8	6.5	1.1	1.8	2.5	3.7	3.9	5.5
NORTHERN SHOVELER	0.3	0.0	0.0	0.0	0.0	0.2	0.3	0.3	0.7	0.3	0.2	0.3	1.8	3.6
NORTHERN PINTAIL	0.7	0.3	3.8	0.0	0.7	0.7	1.1	1.5	2.7	2.3	1.5	1.0	5.9	5.5
WOOD DUCK	0.0	0.3	1.0	1.0	1.2	3.3	5.8	5.7	6.2	7.6	15.9	15.3	0.1	0.1
REDHEAD	0.0	0.0	0.0	0.0	0.0	0.0	0.0	0.0	0.0	0.0	0.8	0.9	2.4	4.5
CANVASBACK	0.0	0.0	0.0	0.0	0.0	0.0	0.0	0.0	trace	0.0	0.8	0.2	2.7	2.5
GREATER SCAUP	1.7	2.4	0.0	0.0	1.7	0.4	1.3	3.6	1.2	0.7	0.9	1.2	0.1	0.4
LESSER SCAUP	0.0	0.8	0.0	0.0	0.0	0.1	0.1	0.3	2.1	2.4	2.7	3.7	8.1	4.8
RING-NECKED DUCK	13.8	14.8	0.5	0.0	1.7	2.6	5.9	5.9	3.8	4.1	6.2	5.4	1.4	3.0
GOLDENEYES	9.0	5.2	0.0	0.0	3.2	1.8	6.0	5.1	1.9	2.8	2.9	3.0	1.4	0.2
BUFFLEHEAD	0.0	0.0	0.0	0.0	1.3	0.0	0.0	0.3	0.4	0.5	3.8	2.8	2.4	0.8
RUDDY DUCK	0.0	0.0	0.0	0.0	0.0	0.0	0.0	0.0	0.0	0.0	0.2	0.3	0.1	0.4
LONG-TAILED DUCK (aka Oldsquaw)	1.7	0.9	0.0	0.0	0.0	1.0	0.1	0.1	0.5	0.4	0.1	0.1	0.0	0.0
EIDERS	17.4	15.4	0.0	0.0	2.3	11.9	1.3	0.8	1.0	1.5	0.0	0.0	0.0	0.0
SCOTERS	1.1	3.0	0.0	0.0	3.5	6.3	2.4	0.7	0.9	1.6	0.1	0.3	0.0	0.1
HOODED MERGANSER	0.3	0.7	0.0	0.0	0.3	0.2	0.3	1.2	2.5	1.5	1.8	2.0	0.3	0.1
OTHER MERGANSERS	5.7	11.4	2.3	0.0	2.0	2.4	0.2	1.4	1.5	1.6	0.5	0.5	0.0	0.0
MISCELLANEOUS DUCKS*	0.0	0.0	0.0	0.0	0.0	0.0	0.0	0.0	0.0	0.0	0.0	0.0	0.0	0.0
DUCK HARVEST (retrieved kill)	63,600	50,200	13,500	17,800	69,200	58,500	52,500	41,700	244,500	215,800	367,300	364,500	148,100	168,300
PERCENT CHANGE		-21%		32%		-15%		-21%		-12%		-1%		14%
<b>GOOSE SPECIES COMPOSITION (%)</b>														
CANADA GOOSE	100.0	100.0	100.0	100.0	100.0	100.0	100.0	100.0	26.2	40.6	98.6	99.2	69.1	79.7
SNOW GOOSE	0.0	0.0	0.0	0.0	0.0	0.0	0.0	0.0	73.0	58.2	0.8	0.4	12.6	5.8
BLUE GOOSE	0.0	0.0	0.0	0.0	0.0	0.0	0.0	0.0	0.5	0.8	0.2	0.2	16.7	14.0
WHITE-FRONTED GOOSE	0.0	0.0	0.0	0.0	0.0	0.0	0.0	0.0	0.0	0.0	0.0	0.0	0.0	0.0
BRANT	0.0	0.0	0.0	0.0	0.0	0.0	0.0	0.0	0.1	0.4	0.4	0.1	0.0	0.0
MISCELLANEOUS GEESSE*	0.0	0.0	0.0	0.0	0.0	0.0	0.0	0.0	0.2	0.0	0.0	0.0	1.6	0.5
GOOSE HARVEST (retrieved kill)	8,200	5,600	25,900	25,100	13,500	10,600	8,400	5,600	148,600	166,800	127,100	149,900	108,100	128,000
PERCENT CHANGE		-32%		-3%		-21%		-33%		12%		18%		18%
<b>TOTAL PERMITS SOLD</b>														
PERCENT CHANGE	12,217	16,998	2,805	2,416	7,072	6,645	6,399	5,975	30,271	29,138	63,672	58,458	15,810	15,038
		39%		-14%		-6%		-7%		-4%		-8%		-5%

\* Also included here when no sample of ducks and/or geese was available for making species composition estimates.



TABLE 9. -- PERCENTAGE SPECIES COMPOSITION OF WATERFOWL HARVESTED, TOTAL NUMBERS HARVESTED, AND TOTAL MIGRATORY BIRD HUNTING PERMITS SOLD BY PROVINCE IN CANADA DURING THE 2000 AND 2001 HUNTING SEASONS -- CONTINUED (estimates courtesy of the Canadian Wildlife Service).

SPECIES, ETC.	SASKATCHEWAN		BRITISH COLUMBIA				NUNAVUT and NORTHWEST TERR.		YUKON TERR.		< - - - - ALL OF CANADA - - - - >			
	2000	2001	ALBERTA		2000	2001	2000	2001	2000	2001	TOTAL HARVEST		PERCENTAGES	
			2000	2001	2000	2001	2000	2001	2000	2001	2000	2001	2000	2001
<u>DUCK SPECIES COMPOSITION (%)</u>														
MALLARD (includes domestic)	80.6	70.0	66.7	70.0	67.1	64.0	43.6	62.9	15.6	56.1	689,400	591,800	48.0	46.9
AMERICAN BLACK DUCK	0.3	0.0	0.0	0.0	0.0	0.0	0.0	0.0	0.0	0.0	154,900	124,100	10.8	9.8
GADWALL	3.4	4.9	8.5	6.7	2.1	2.6	0.0	1.9	0.0	0.0	41,500	33,300	2.9	2.6
WIGEON	2.6	3.5	4.4	5.6	13.6	15.1	0.0	8.3	14.1	0.0	41,700	42,800	2.9	3.4
GREEN-WINGED TEAL	1.1	3.7	1.8	2.5	5.0	4.9	3.3	0.0	0.0	22.3	117,100	89,400	8.2	7.1
BLUE-WINGED/CINNAMON TEAL	1.9	5.7	2.3	1.7	0.5	0.9	0.0	4.7	0.0	0.0	29,600	42,200	2.1	3.3
NORTHERN SHOVELER	1.4	4.8	3.2	3.3	1.5	1.0	0.0	2.9	0.0	0.0	15,200	20,300	1.1	1.6
NORTHERN PINTAIL	6.7	4.6	8.5	6.5	7.9	8.6	4.3	1.9	0.0	14.7	58,300	39,700	4.1	3.1
WOOD DUCK	0.0	0.0	0.0	0.0	0.2	0.8	0.0	0.0	0.0	0.0	77,800	77,400	5.4	6.1
REDHEAD	1.0	0.5	1.2	1.1	0.0	0.0	0.0	2.9	0.0	0.0	11,000	13,100	0.8	1.0
CANVASBACK	0.2	0.3	0.7	0.3	0.0	0.2	1.0	0.0	0.0	0.0	8,800	6,100	0.6	0.5
GREATER SCAUP	0.0	0.0	0.0	0.0	0.0	0.0	0.0	0.0	0.0	0.0	9,200	9,500	0.6	0.8
LESSER SCAUP	0.5	1.2	1.1	0.6	0.2	0.2	6.3	12.6	28.2	2.0	30,300	30,200	2.1	2.4
RING-NECKED DUCK	0.3	0.8	0.5	0.3	0.5	0.5	19.0	1.9	42.1	0.0	49,800	46,700	3.5	3.7
GOLDENEYES	0.0	0.0	0.1	0.7	0.7	0.4	1.0	0.0	0.0	0.0	29,200	24,500	2.0	1.9
BUFFLEHEAD	0.0	0.0	0.8	0.4	0.4	0.7	9.7	0.0	0.0	4.9	21,100	13,700	1.5	1.1
RUDDY DUCK	0.0	0.0	0.1	0.1	0.1	0.0	0.0	0.0	0.0	0.0	1,000	1,900	0.1	0.2
LONG-TAILED DUCK (aka Oldsquaw)	0.0	0.0	0.0	0.0	0.0	0.0	0.0	0.0	0.0	0.0	2,700	2,400	0.2	0.2
EIDERS	0.0	0.0	0.0	0.0	0.0	0.0	0.0	0.0	0.0	0.0	15,800	18,200	1.1	1.4
SCOTERS	0.0	0.1	0.0	0.0	0.0	0.0	2.1	0.0	0.0	0.0	7,000	10,400	0.5	0.8
HOODED MERGANSER	0.0	0.0	0.1	0.0	0.0	0.0	0.0	0.0	0.0	0.0	14,100	11,600	1.0	0.9
OTHER MERGANSERS	0.0	0.0	0.0	0.0	0.0	0.0	0.0	0.0	0.0	0.0	11,000	13,100	0.8	1.0
MISCELLANEOUS DUCKS*	0.0	0.0	0.0	0.0	0.0	0.0	0.0	0.0	0.0	0.0	100	100	trace	trace
DUCK HARVEST (retrieved kill)	242,300	153,500	160,700	135,400	73,400	55,600	1,200	1,000	500	400	*****		100.0	100.0
PERCENT CHANGE		-37%		-16%		-24%		-17%		-20%		-12%		
<u>GOOSE SPECIES COMPOSITION (%)</u>														
CANADA GOOSE	49.7	45.4	79.3	68.7	85.5	84.3			0.0		612,100	637,000	42.6	50.5
SNOW GOOSE	13.9	21.6	7.8	7.6	13.2	15.2			0.0		185,900	189,600	12.9	15.0
BLUE GOOSE	6.5	9.5	0.1	0.6	0.0	0.0			100.0		41,300	51,500	2.9	4.1
WHITE-FRONTED GOOSE	25.6	19.0	11.9	19.5	1.0	0.5			0.0		106,700	93,200	7.4	7.4
BRANT	0.0	0.0	0.0	0.0	0.0	0.0			0.0		600	800	trace	0.1
MISCELLANEOUS GEESE*	4.2	4.5	0.9	3.5	0.3	0.0			0.0		17,900	21,000	1.2	1.7
GOOSE HARVEST (retrieved kill)	337,800	323,300	167,300	162,700	19,300	15,500	300	100	100	100	964,800	993,200	100.0	100.0
PERCENT CHANGE		-4%		-3%		-20%		-67%		0%		3%		
<u>TOTAL PERMITS SOLD</u>	21,908	18,387	21,792	19,527	9,007	8,185	267	243	224	251	191,444	181,261		
PERCENT CHANGE		-16%		-10%		-9%		-9%		12%		-5%		

\* Also included here when no sample of ducks and/or geese was available for making species composition estimates.

Table 10. Total retrieved duck and goose harvests (in thousands) in the U.S. and Canada during 2001 and 2001 hunting seasons (Canadian estimates courtesy of the Canadian Wildlife Service).

Species	Season	United States	Canada	Combined	Species	Season	United States	Canada	Combined
Mallard (incl. domestic)	2000	5,718.6	689.4	6,408.0	Bufflehead	2000	123.1	21.1	144.2
	2001	5,236.3	591.8	5,828.1		2001	131.5	13.7	145.2
	% change	-8%	-14%	-9%		% change	7%	-35%	1%
Am. Black Duck	2000	179.6	154.9	334.5	Ruddy Duck	2000	23.3	1.0	24.3
	2001	133.8	124.1	257.9		2001	21	1.9	22.9
	% change	-26%	-20%	-23%		% change	-10%	90%	-6%
Black x Mallard hybrid	2000	26.7	-	26.7	Long-tailed Duck (aka Oldsquaw)	2000	10.1	2.7	12.8
	2001	18.7	-	18.7		2001	10.0	2.4	12.4
	% change	-30%	-	-30%		% change	-1%	-11%	-3%
Mottled Duck	2000	61.4	0.0	61.4	Eiders	2000	16.1	15.8	31.9
	2001	78.5	0.0	78.5		2001	20.8	18.2	39.0
	% change	28%	0%	28%		% change	29%	15%	22%
Gadwall	2000	2,059.9	41.5	2,101.4	Scoters	2000	19.0	7.0	26.0
	2001	1,569.3	33.3	1,602.6		2001	27.1	10.4	37.5
	% change	-24%	-20%	-24%		% change	43%	49%	44%
American and Eurasian Wigeon	2000	706.8	41.7	748.5	Hooded Merganser	2000	89.9	14.1	104.0
	2001	704.8	42.8	747.6		2001	81.7	11.6	93.3
	% change	-0%	3%	-0%		% change	-9%	-18%	-10%
Green-winged Teal	2000	1,698.4	117.1	1,815.5	Other mergansers	2000	26.9	11.0	37.9
	2001	1,432.4	89.4	1,521.8		2001	26.8	13.1	39.9
	% change	-16%	-24%	-16%		% change	-0%	19%	5%
Blue-winged and Cinnamon Teal	2000	1,137.0	29.6	1,166.6	Miscellaneous ducks	2000	12.1	0.1	12.2
	2001	1,227.9	42.2	1,270.1		2001	22.6	0.1	22.7
	% change	8%	43%	9%		% change	87%	0%	86%
Northern Shoveler	2000	476.1	15.2	491.3	Total duck bag	2000	15,326.4	1436.8	16,763.2
	2001	571.0	20.3	591.3		2001	13,933.5	1262.6	15,196.1
	% change	20%	34%	20%		% change	-9%	-12%	-9%
=====									
Northern Pintail	2000	496.6	58.3	554.9	Canada Goose	2000	2,334.4	612.1	2,946.5
	2001	445.1	39.7	484.8		2001	2,413.5	637.0	3,050.5
	% change	-10%	-32%	-13%		% change	3%	4%	4%
Wood Duck	2000	1,304.3	77.8	1,382.1	Snow Goose	2000	300.1	185.9	486.0
	2001	1,097.8	77.4	1,175.2		2001	384.1	189.6	573.7
	% change	-16%	-1%	-15%		% change	28%	2%	18%
Redhead	2000	134.3	11.0	145.3	Blue Goose	2000	130.9	41.3	172.2
	2001	150.1	13.1	163.2		2001	154.5	51.5	206.0
	% change	12%	19%	12%		% change	18%	25%	20%
Canvasback	2000	104.0	8.8	112.8	Ross' Goose	2000	30.7	17.9	48.6
	2001	36.4	6.1	42.5		2001	69.7	21.0	90.7
	% change	-65%	-31%	-62%		% change	127%	17%	87%
Greater Scaup	2000	43.1	9.2	52.3	White-fronted Goose	2000	237.9	106.7	344.6
	2001	32.5	9.5	42.0		2001	164.9	93.2	258.1
	% change	-25%	3%	-20%		% change	-31%	-13%	-25%
Lesser Scaup	2000	350.7	30.3	381.0	Brant	2000	22.0	0.6	22.6
	2001	388.9	30.2	419.1		2001	36.8	0.8	37.6
	% change	11%	-0%	10%		% change	67%	33%	66%
Ring-necked Duck	2000	455.5	49.8	505.3	Miscellaneous geese	2000	1.5	0.1	1.6
	2001	418.6	46.7	465.3		2001	1.8	trace	1.8
	% change	-8%	-6%	-8%		% change	20%	-	13%
Goldeneyes	2000	53.1	29.2	82.3	Total goose bag	2000	3,057.5	964.8	4,022.3
	2001	49.9	24.5	74.4		2001	3,225.3	993.2	4,218.5
	% change	-6%	-16%	-10%		% change	5%	3%	5%