

# Figure 2

Shawnee National Forest  
Hiker/Equestrian Trails Designation Project  
Interim Trail Map 2007  
Lusk Creek and Upper Bay Creek  
Watersheds  
Eddyville Vicinity

**NOT FOR RESALE**

### Emergency Contact Information

Gallatin County Sheriff (618) 269-3137  
Hardin County Sheriff (618) 287-2271  
Pope County Sheriff (618) 683-4321  
Saline County Sheriff (618) 252-7813 or 8861

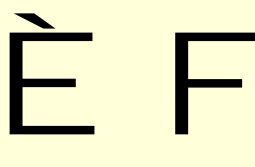
### National Forest Contact Numbers

Hidden Springs Ranger District 602 N. First Street  
Route 45 North  
Vienna, IL 62995  
(618) 658-2111

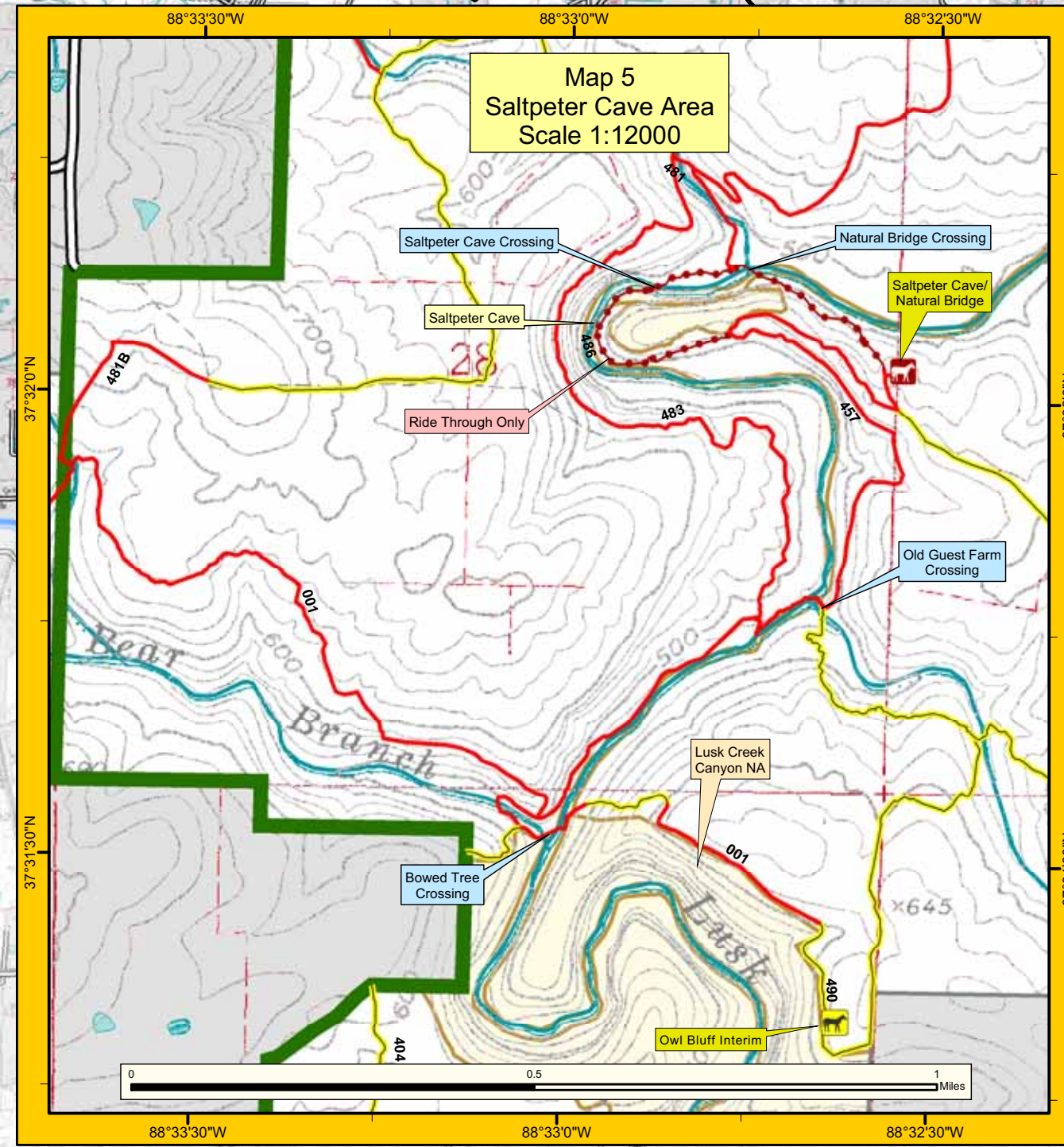
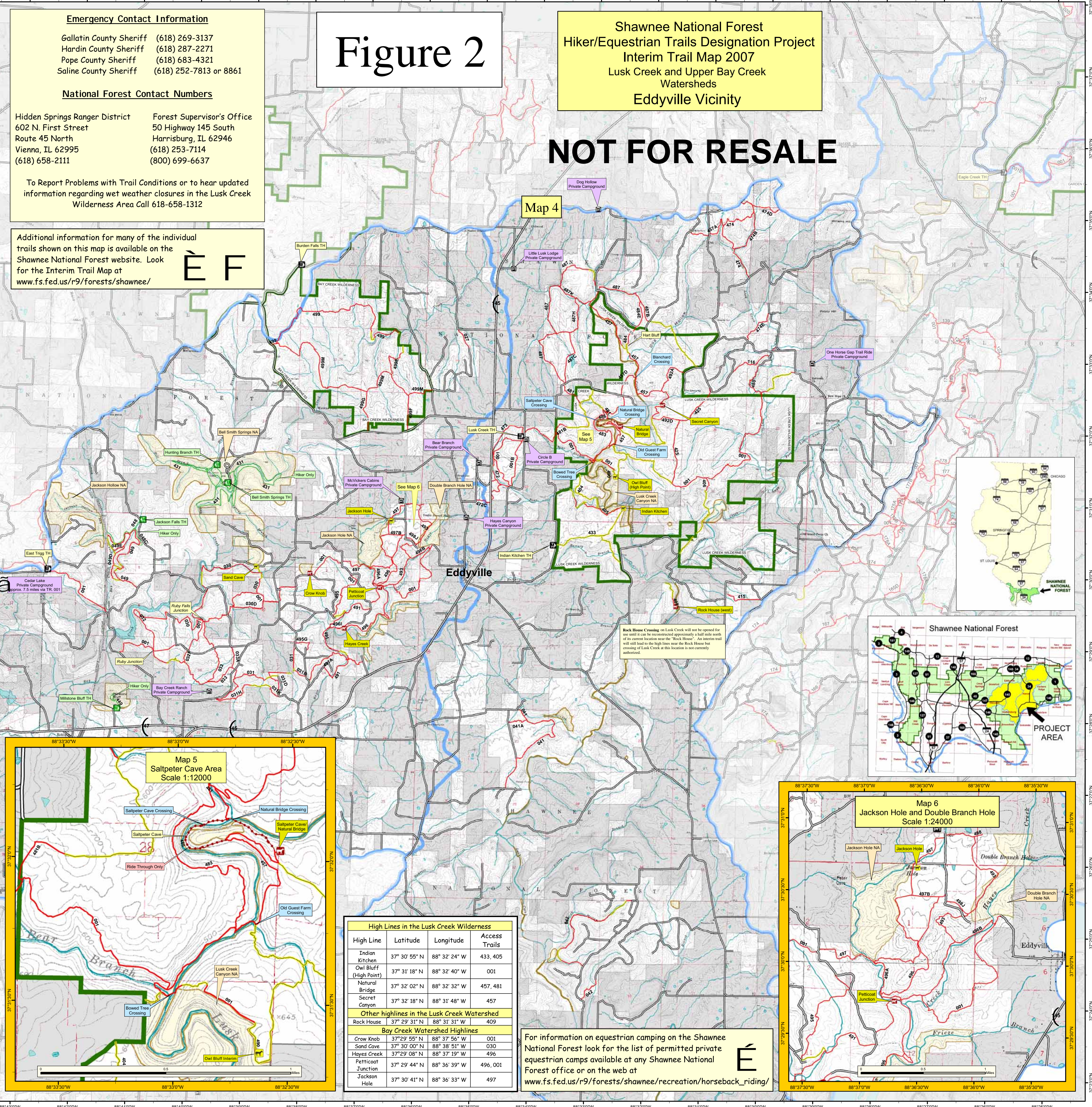
Forest Supervisor's Office  
50 Highway 145 South  
Harrisburg, IL 62946  
(618) 253-7114  
(800) 699-6637

To Report Problems with Trail Conditions or to hear updated information regarding wet weather closures in the Lusk Creek Wilderness Area Call 618-658-1312

Additional information for many of the individual trails shown on this map is available on the Shawnee National Forest website. Look for the Interim Trail Map at [www.fs.fed.us/r9/forests/shawnee/](http://www.fs.fed.us/r9/forests/shawnee/)

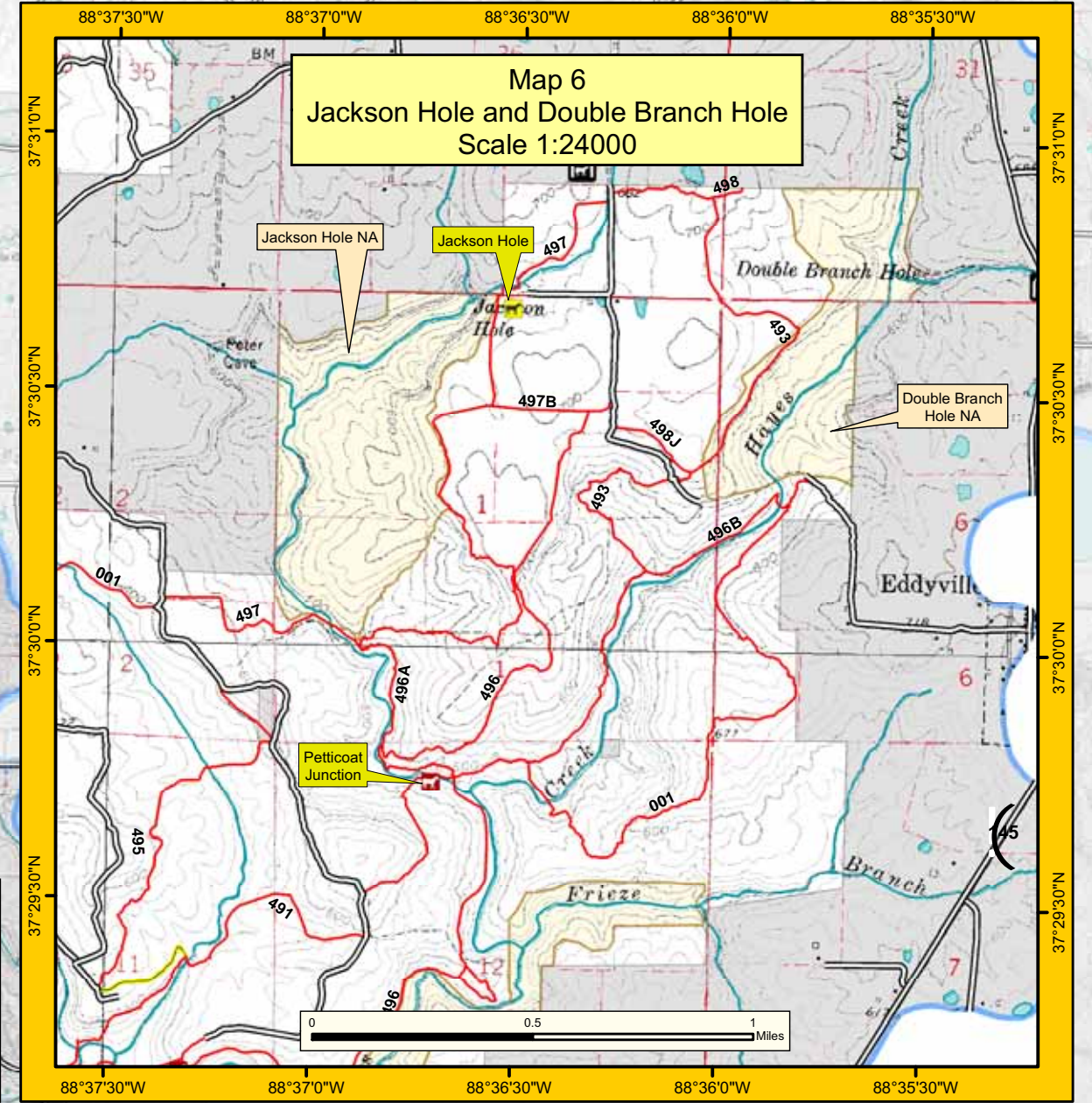


Map 4



High Lines in the Lusk Creek Wilderness			
High Line	Latitude	Longitude	Access Trails
Indian Kitchen	37° 30' 55" N	88° 32' 24" W	433, 405
Owl Bluff (High Point)	37° 31' 18" N	88° 32' 40" W	001
Natural Bridge	37° 32' 02" N	88° 32' 32" W	457, 481
Secret Canyon	37° 32' 18" N	88° 31' 48" W	457
Other highlines in the Lusk Creek Watershed			
Rock House	37° 29' 31" N	88° 31' 31" W	409
Bay Creek Watershed Highlines			
Crow Knob	37° 29' 55" N	88° 37' 56" W	001
Sand Cave	37° 30' 00" N	88° 38' 51" W	030
Hoyes Creek	37° 29' 08" N	88° 37' 19" W	496
Petticoat Junction	37° 29' 44" N	88° 36' 39" W	496, 001
Jackson Hole	37° 30' 41" N	88° 36' 33" W	497

For information on equestrian camping on the Shawnee National Forest look for the list of permitted private equestrian camps available at any Shawnee National Forest office or on the web at [www.fs.fed.us/r9/forests/shawnee/recreation/horseback\\_riding/](http://www.fs.fed.us/r9/forests/shawnee/recreation/horseback_riding/)



### Lusk Creek, Bay Creek and Garden of the Gods Wilderness Areas

Included on this map are three wilderness areas that were designated by Congress in 1990 under the law set forth in the Wilderness Act of 1964. The Lusk Creek, Bay Creek and Garden of the Gods wilderness areas encompass 13,484 acres of the Shawnee National Forest. In keeping with the Wilderness Act, these areas contain special provisions for hikers and riders who wish to visit them.

#### What is a Congressionally Designated Wilderness?

A wilderness area is managed to protect the environment in its natural state in perpetuity. It is a place that should be affected only by the forces of nature. Primitive and challenging recreation is encouraged in wilderness, and the management of wilderness is designed to preserve opportunities for solitude and primitive recreation both for us and for generations to come.

#### Special Provisions for Wilderness Use

Special provisions are enforced in wilderness to control the impacts of recreational use. Wilderness visitors are asked to share the responsibility for preserving the character of wilderness by educating themselves on hiking, riding or camping techniques that preserve solitude and primitive recreation as well as the natural plant and animal communities that exist in these areas. The following regulations apply to the Lusk Creek, Bay Creek and Garden of the Gods Wilderness Areas:

- All saddle, pack or draft animals should be kept on trails designated for stock use, or in designated stock confinement areas (high lines). These trails and areas are depicted on this map. Hiking is welcome anywhere.
- Mechanized equipment and wheeled vehicles, including carts, wagons or bicycles, are not allowed in wilderness areas on the Shawnee National Forest.
- Camping with livestock is not allowed within the Lusk Creek, Bay Creek or Garden of the Gods Wilderness Areas.



- Stock must not be tied within reach of a live tree. Use high lines in the areas where these are provided. Indian Kitchen, Owl Bluff (High Point), Natural Bridge and Secret Canyon in the Lusk Creek Wilderness. For brief stops along the trail stock should be restrained with a method that will not damage trees.
- Group size is limited to no more than ten people in the Bay Creek and Garden of the Gods Wilderness Areas. In the Lusk Creek Wilderness, group size is limited to ten on the trail while in the four stock confinement areas group size is limited to the number of tying points provided on the high lines. Groups are asked to stay out of sight and sound of one another. If encounters with other groups cause you to exceed the group size limitation please separate out of sight or sound of the other group as soon as possible.
- Marking with paint or other material, or carving or otherwise defacing trees, rocks or other natural features is prohibited.
- The Lusk Creek, Bay Creek and Garden of the Gods Wilderness Areas may be closed to stock use from December 1, 2007 to March 31, 2008. Additionally, during the months of April, May, September, October and November the Lusk Creek Wilderness will be closed to stock use whenever more than one inch of rain falls within a 24 hour period. This temporary wet-weather, rainfall closure in the Lusk Creek Wilderness will last a minimum of one day. The need for both seasonal and wet-weather closures will be evaluated yearly, based upon accomplishments that are made in bringing trails in these areas to an all-weather standard. Call 618-658-1312 for updated wilderness wet-weather closure information.
- In the Lusk Creek Wilderness the stock confinement area at Salt Peter Cave has been moved to a location east of Natural Bridge. Equestrians may still ride the trail on the east bank of Lusk Creek through the old confinement area but stopping and tying off stock in this spot is prohibited.

### What is a Natural Area?

The Shawnee National Forest sits at the edge of an ecological crossroads. The Forest lies just south of a vast area that was once covered by glaciers. When the glaciers receded, the changes to land form and plant and animal communities that occurred in more northerly areas had less of an impact here. No less than five distinct regional ecological types all converge in southernmost Illinois resulting in the presence of a tremendous diversity in flora and fauna. The unique blend of geologic and natural diversity make many areas of the Shawnee National Forest a kind of living museum of natural history. To ensure the long term survival of this diverse twenty-five distinct rare natural plant and animal communities are protected in a series of 80 Natural Areas (NA) that exist all across the Forest.

Natural Areas are most easily identified by boundaries marked with slender, yellow, flexible posts. On the Interim Trails Map they are depicted by light yellow shading. These areas are managed for the preservation, protection or enhancement of their unique scientific, educational or natural values. Any recreational use must be consistent with the protection of these values. Use with stock is rarely authorized in these areas and only on the designated equestrian trails shown on this map. While foot travel is welcome, overnight camping, building open campfires and rock climbing or rappelling are prohibited.

Lusk Creek is what is known as a Zoological Area (ZA), from bank to bank, beginning near the northern tip of the Lusk Creek Wilderness. The sites where trails cross Lusk Creek have been chosen, and the trail approaches are being hardened, to mitigate impacts to this important stream. Please look for signs identifying the following authorized crossings of Lusk Creek:

Designated Trail Crossings of the Lusk Creek Zoological Area		
Crossing	Latitude	Longitude
Blanchard Crossing	37° 32' 44" N	88° 32' 18" W
Natural Bridge Crossing	37° 32' 08" N	88° 32' 05" W
Salt Peter Cave Crossing	37° 32' 06" N	88° 32' 54" W
Guest Farm Crossing (formerly the River-to-River Trail Crossing)	37° 31' 46" N	88° 32' 39" W
Bowed-Tree Crossing (new site for the River-to-River Trail Crossing)	37° 31' 31" N	88° 33' 00" W
Rock House Crossing (closed until new trail can be constructed)		

Contour interval = 20 feet  
0 0.5 1 2 Miles

**Legend** 03.19.2007  
Scale 1:48000

- J Parking Area (Hiker Only)
- C Trailhead (Hiker Only)
- E Horse Camps
- E Horse High Line Area
- E Interim Horse High Line Area
- Hiker/Equestrian Trails
- Ride Through Only Trail
- Interim Trails
- Hiker Only Trails
- Existing Roads
- Streams
- Lusk Creek ZA
- Natural Areas
- Wilderness
- National Forest Land
- Non National Forest Land
- Watershed Boundary

"The Forest Service uses the most current and complete data available. GIS data and product accuracy may vary. They may be developed from sources of differing accuracy, accurate only at certain scales, based on modeling or interpretation, incomplete while being created or revised, etc. Using GIS products for purposes other than those for which they were created, may yield inaccurate or misleading results. The Forest Service reserves the right to correct, update, modify, or replace GIS products without notification. The Forest Service will not be liable for any activity involving this information. Additionally, trails on this map may be removed from use due to resource damage. The USDA Forest Service is an Equal Opportunity provider."