

UNEMPLOYMENT INSURANCE STATISTICS

State of Oregon
EMPLOYMENT DEPARTMENT

UI Programs
Janet Orton

(503) 947-1679

janet.l.orton@state.or.us

www.WorkingInOregon.org

LABOR FORCE DATA	This Month	Last Month	Last Year
	June 2009	May 2009	June 2008
Oregon Civilian Labor Force	1,995,952	1,987,520	1,964,967
Total Number Unemployed	241,156	236,210	113,722

UNEMPLOYMENT RATES (CIVILIAN) (%)		Labor Force & Rate Data: www.QualityInfo.org		
Total Unemployment:	Oregon	12.1	11.9	5.8
	National	9.7	9.1	5.7
Seasonally Adjusted:	Oregon	12.2	12.2	5.9
	National	9.5	9.4	5.5

Week # :	30	THIS WEEK		LAST WEEK		This Month	Last Month	Last Year
Ending:	August 1, 2009	2009	2008	2009	2008	July 2009	June 2009	July 2008
UNEMPLOYMENT RATES (%)								
Insured Unemployment: Oregon		6.27	3.09	6.45	3.21	6.55	6.83	3.53
EB Trigger		6.85	3.14	6.94	3.15			
Adjusted Insured Unemployment		9.13	3.93	9.23	3.94			
National Average TUR ¹		21.10	5.50	12.10	5.50	This Month	Last Month	Last Year
REGULAR CLAIMS (UI, UC FE, UCX)								
Initial Claims (Excl. Liable) ²		9,797	6,936	10,219	6,137	42,939	48,368	33,596
Oregon - New		4,029	3,940	4,774	3,080	17,811	20,432	17,191
Additional		5,276	2,715	4,994	2,763	23,322	26,140	15,014
Interstate - Agent		492	281	451	294	1,806	1,796	1,391
Interstate - Liable		256	196	272	167	1,064	1,159	877
Weeks Claimed (Excl. Liable) ²		105,483	52,974	108,461	55,075	445,296	459,620	226,749
Oregon		100,948	50,808	104,045	53,215	427,705	441,830	217,542
Interstate - Agent		4,535	2,166	4,416	1,860	17,591	17,790	9,207
Interstate - Liable		3,192	1,603	3,263	1,674	13,149	13,087	6,766
New Combined Wage Claims		162	119	196	107	737	749	567
Non-monetary Determinations & Redeter.		3,366	2,721	2,478	2,859	9,585	11,585	11,549
PAYMENTS: REGULAR BENEFITS								
First Payments		3,678	2,753	4,334	4,212	18,372	16,967	13,312
Checks Issued		101,892	48,909	102,505	51,702	420,203	446,462	208,518
Gross Amount of Payments (\$) ^{2,4}		31,698,553	13,273,092	32,092,514	14,014,029	132,213,791	140,163,484	56,781,277
Regular Benefit Payments (\$)		29,323,903	13,273,092	29,682,314	14,014,029	122,337,491	129,734,134	56,781,227
Regular Federal Additional Compensation (\$) ³		2,374,650	0	2,410,200	0	9,876,300	10,429,350	0
Average Check Amount (\$) ^{2,4}		311.10	271.38	313.08	271.05	314.64	313.94	272.31
Number Exhausting Benefits		3,413	1,062	3,484	1,230	13,851	12,645	4,893
TRUST FUND								
Balance (in Millions) (\$)		\$ 1,385.45	\$ 2,075.42	\$ 1,406.36	\$ 2,083.36	\$ 1,385.45	\$ 1,423.77	\$ 2,074.30

¹ NTUR: Unemployment Compensation Amendment of 1992 specifies that a 2 month average NTUR be used to determine duration levels.

² Excludes WORKSHARE program

³ Federal Additional Compensation program start 3/2/2009 - Adds and additional \$25 to all claims

⁴ Includes FAC Payments

For current and historic UI reports, visit:

<http://www.oregon.gov/EMPLOY/BUDGET/UI/index.shtml>

Week # :	30
Ending:	August 1, 2009

	This Week	Last Week	Cumulative
EXTENDED BENEFITS (UI, UCFE, UCX)			YTD
Initial Claims (Excl. Liable)	637	647	14,130
Weeks Claimed (Excl. Liable)	10,858	10,436	104,794
Gross Amount of Payments (\$) ⁴	3,163,100	3,500,903	38,098,166
EB Benefit Payments (\$)	2,884,700	3,232,553	35,127,991
EB Federal Additional Compensation (\$) ³	278,400	268,350	2,970,175
Number Exhausting Benefits	44	48	515

Oregon HEB Trigger "ON" 02/15/2009.

For a list of states ON EB, visit:

http://www.workforcesecurity.doleta.gov/unemploy/claims_arch.asp

Misc Additional Benefits			
Initial Claims (Excl. Liable)	3	2	75
Weeks Claimed (Excl. Liable)	80	52	1,111
Gross Amount of Payments (\$)	0	0	0
Number Exhausting Benefits	0	0	0

TRADE ADJUSTMENT ACT			
Training Plans	10	7	1,151
Initial Claims	84	92	3,248
Weeks Claimed	2	0	1,076
Gross Amount of TRA Payments (\$) ⁴	918	0	411,942
TRA Benefit Payments (\$)	868	0	390,892
TRA Federal Additional Compensation (\$) ³	50	0	21,050
Certifications	1	0	19
Gross Amount of TAA Payments (\$)	2,799	0	49,058

WORKSHARE PROGRAM			
Initial Claims	155	195	13,528
Weeks Claimed	4,608	5,376	144,336
Gross Amount of Payments (\$) ⁴	572,930	603,487	15,832,730
WS Benefit Payments (\$)	465,930	488,462	13,279,056
WS Federal Additional Compensation (\$)	107,000	115,025	2,553,674

TRAINING UI (TUI)			
Applications Accepted	76	179	4,110
Approved	73	175	3,491
Weeks Claimed	2,158	2,079	50,947
Gross Amount of Payments (\$) ⁴	794,901	778,016	18,250,396
TUI Benefit Payments (\$)	740,376	724,516	17,215,866
TUI Federal Additional Compensation (\$)	54,525	53,500	1,034,530

SUD			
Initial Claims	0	0	8
Weeks Claimed	2	2	106
Gross Amount of Payments (\$) ⁴	377	377	40,568
SUD Benefit Payments (\$)	327	327	37,568
SUD Federal Additional Compensation (\$)	50	50	3,000

³ Federal Additional Compensation program start 3/2/2009 - Adds and additional \$25 to all claims

⁴ Includes FAC Payments

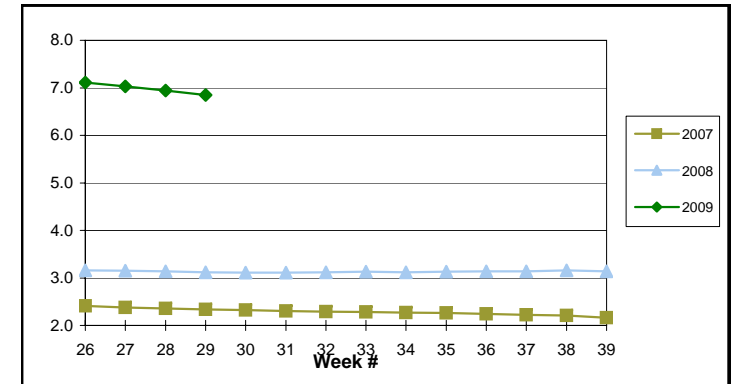
For current and historic UI reports, visit:

<http://www.oregon.gov/EMPLOY/BUDGET/UI/index.shtml>

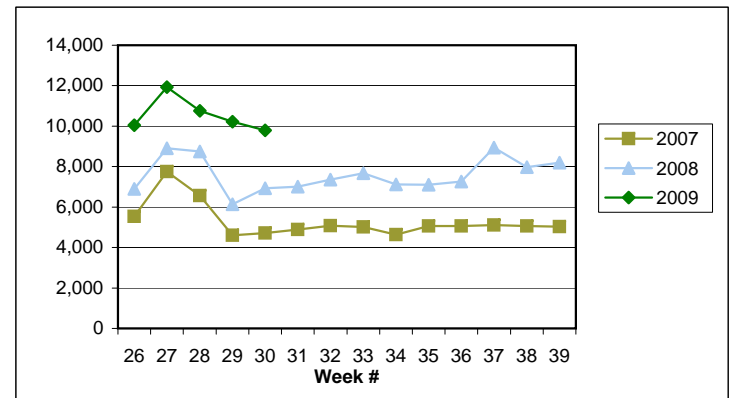
(503) 947-1679

✉ janet.l.orton@state.or.us

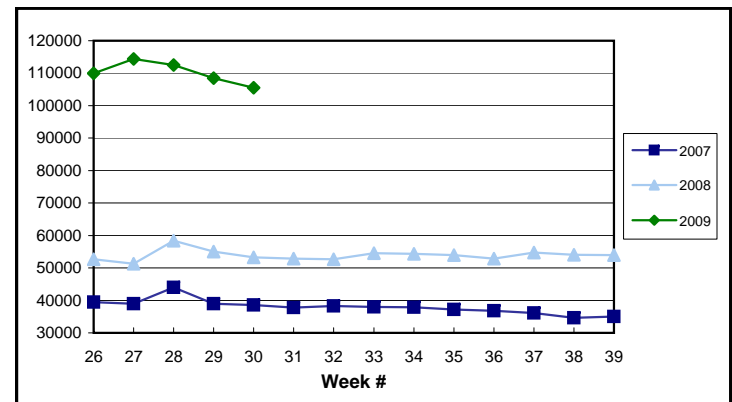
EB Trigger: 6.85



Regular Initial Claims: 9,797



Regular Weeks Claimed: 105,483



Week # : 30
Ending: August 1, 2009

This Week Last Week Cumulative
 YTD

SELF EMPLOYMENT (SEA) MONTHLY⁵		July 2009	Cumulative
Referred		69	307
Enrolled		103	454
Completed		19	127
Weeks Claimed	245	872	5,320
Gross Amount of Payments (\$) ⁴	104,158	384,434	2,267,024
SEA Benefit Payments (\$)	98,233	362,659	2,162,674
SEA Federal Additional Compensation (\$) ³	5,925	21,775	104,350

⁵ These are MONTHLY counts; data in BOLD is weekly.

DISASTER UNEMPLOYMENT ASSISTANCE (DUA)			
Initial Claims	0	0	0
Weeks Claimed	0	0	0
Gross Amount of Payments (\$)	0	0	0
Insured	0	0	0
Self Employed	0	0	0
Number Exhausting Benefits	0	0	0

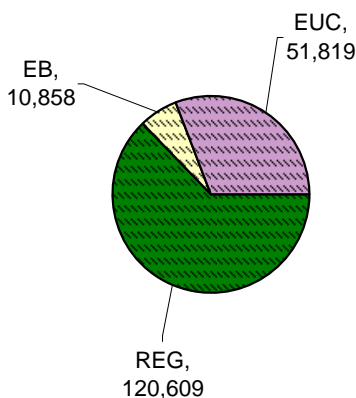
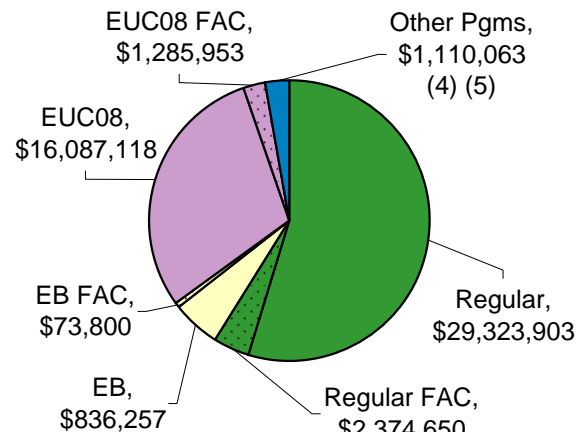
Announcement Date 12/12/2007

EMERGENCY UNEMPLOYMENT COMPENSATION 08			
Initial Claims (Excl. Liable)	3,520	3,863	76,652
Weeks Claimed (Excl. Liable)	51,819	49,935	1,157,265
Gross Amount of Payments (\$) ⁴	17,373,071	16,762,224	368,272,918
EUC Benefit Payments (\$)	16,087,118	15,622,399	345,972,975
EUC Federal Additional Compensation (\$) ³	1,285,953	1,139,825	22,299,943
Number Exhausting Tier 1 Benefits	1,299	1,196	33,892
Number Exhausting Tier 2 Benefits	731	724	17,340

EUC begins 07/06/2008

Benefits Paid By Program
Total Benefits Paid: \$53,710,807

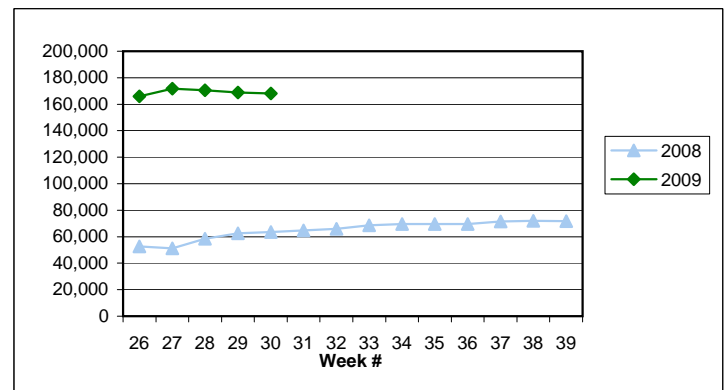
Weeks Claimed - Program by Program
Total: 168,160



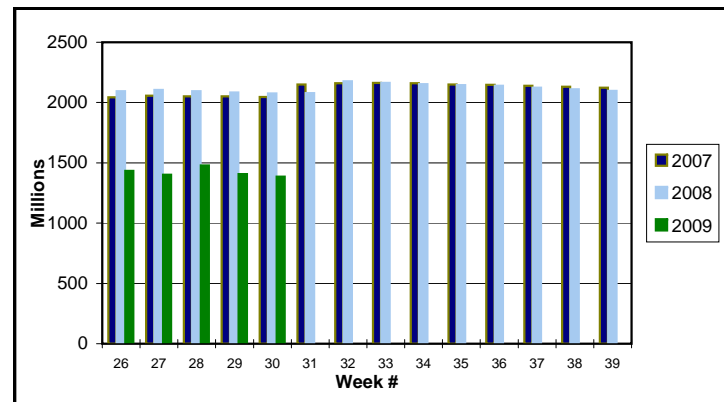
³ Federal Additional Compensation program start 3/2/2009 - Adds and additional \$25 to all claims

⁴ Includes FAC Payments

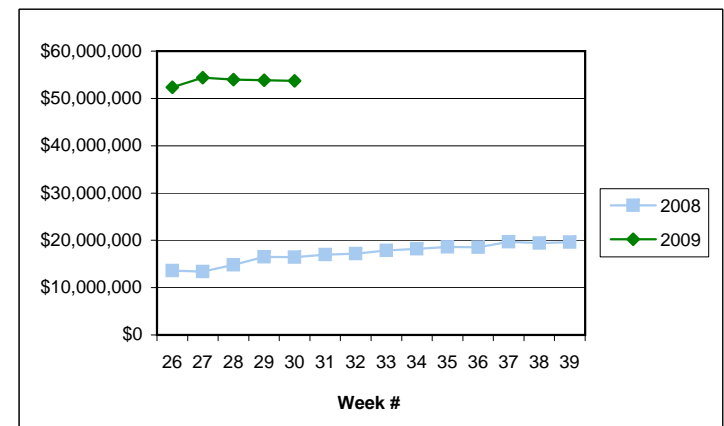
Total Weeks Claimed (Regular + EB + EUC): 168,160



Trust Fund Balance: \$ 1,385.45 (in millions)



Total Benefits Paid: \$53,710,807



⁵ Other Programs Include AB, TRA, TAA, WS, TUI, SUD, SEA

For current and historic UI reports, visit:

<http://www.oregon.gov/EMPLOY/BUDGET/UI/index.shtml>

(503) 947-1679

janet.l.orton@state.or.us