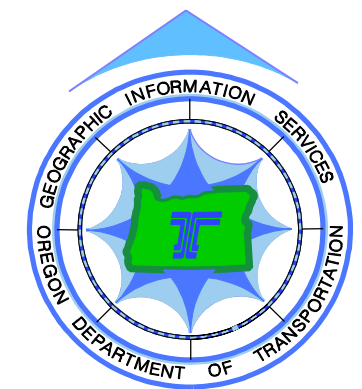
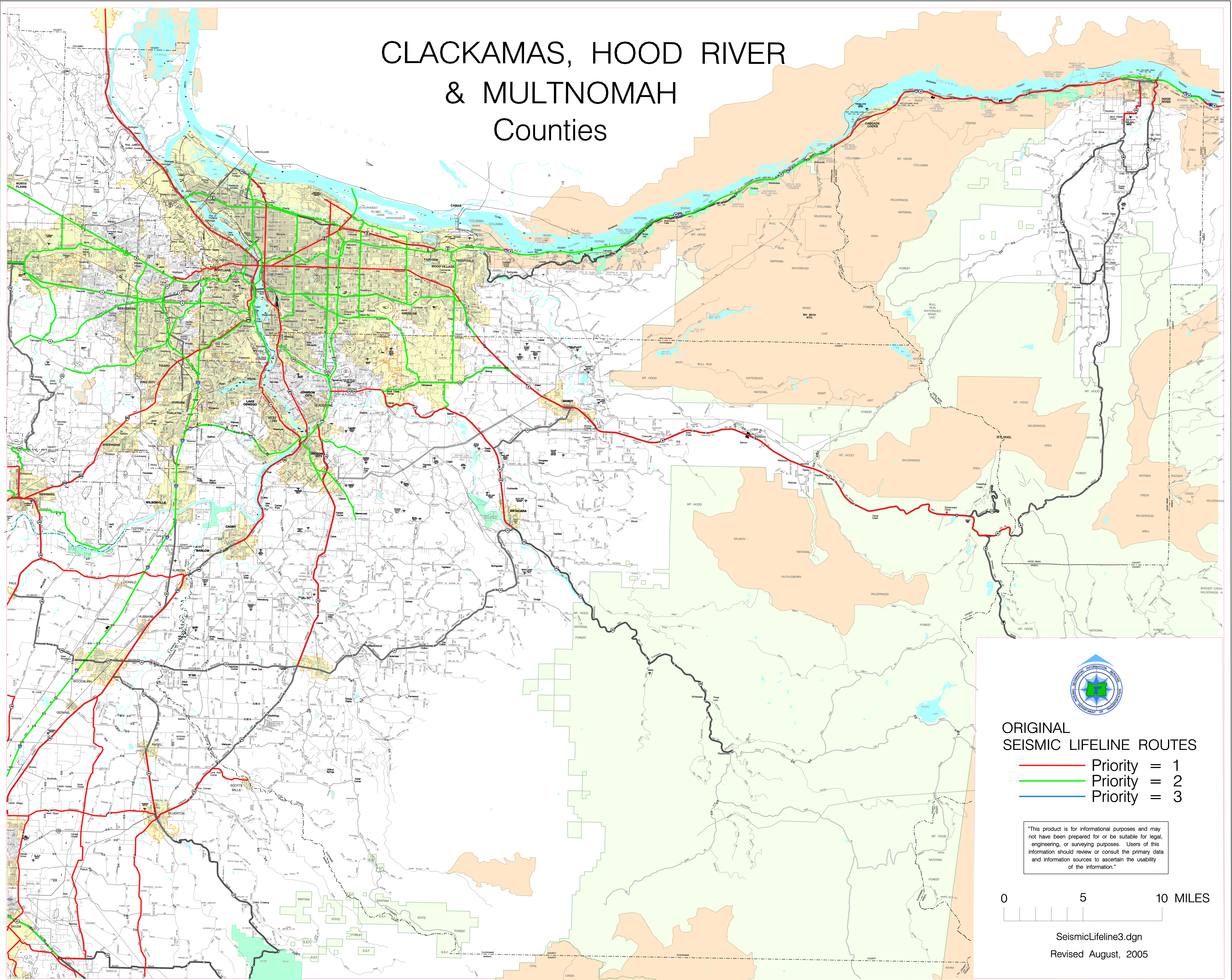


CLACKAMAS, HOOD RIVER & MULTNOMAH Counties



ORIGINAL SEISMIC LIFELINE ROUTES

- Priority = 1
- Priority = 2
- Priority = 3

"This product is for informational purposes and may not have been prepared for or be suitable for legal, engineering, or surveying purposes. Users of this information should review or consult the primary data and information sources to ascertain the usability of the information."



SeismicLifeline3.dgn
Revised August, 2005