

Epidemiological Profiles of Oregon





Purpose of the epidemiological profiles

- Summarize the nature magnitude and distribution of illicit drug use and related consequences in Oregon
 - Use data that has been collected and reported in a consistent (valid and reliable) manner for at least three years



How the data was assessed

- Magnitude or size of the problems
- Changes over time that reveal improving or worsening trends
- Comparison of Oregon results to those of the United States
- Differences in the magnitude of consequences and consumption through subgroup analyses

Illicit Drugs





Sources of data

- Oregon's Annual Uniform Crime Report (LEDS)
- National Survey on Drug Use and Health (NSDUH)
- Oregon Healthy Teens survey (OHT)
- Mortality Reports from Vital Statistics and the State Medical Examiner

SEOW



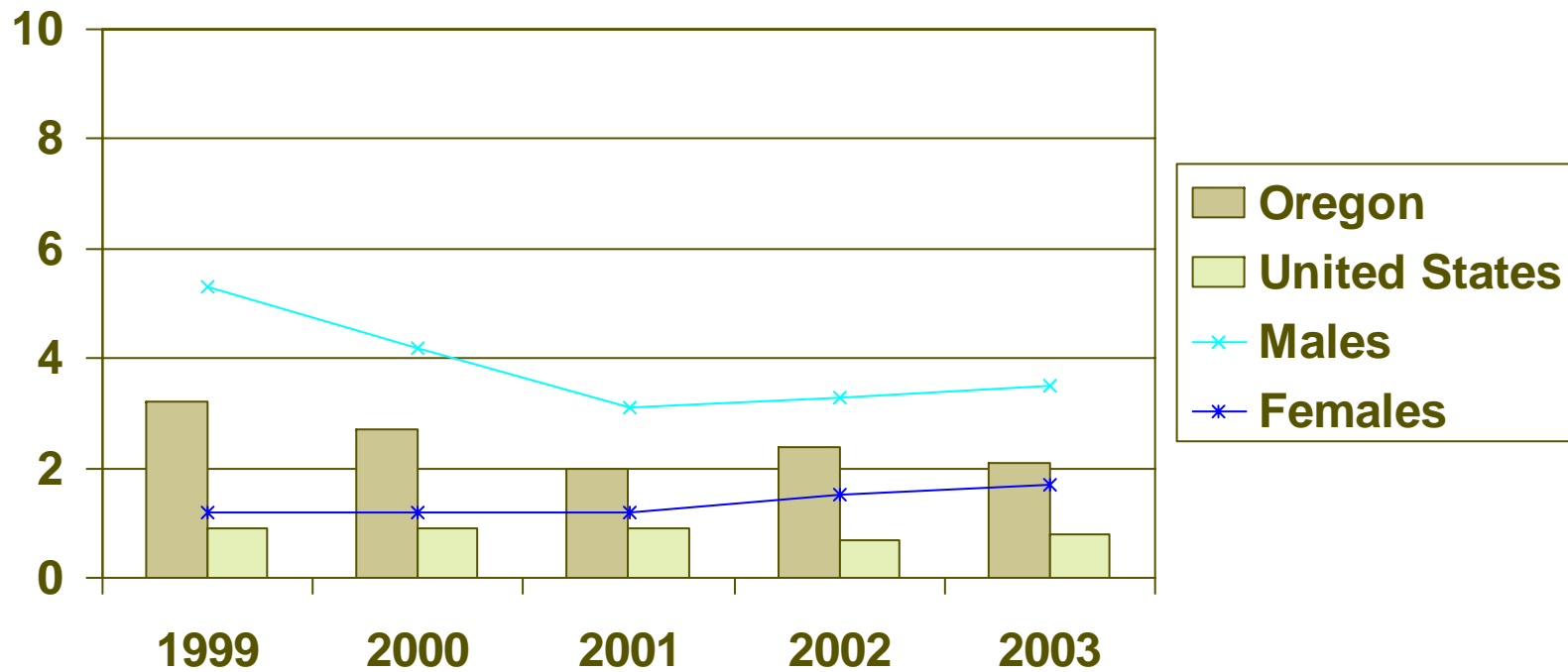
Consequences of Illicit Drug Use

- Drug-related mortality
- Abuse or dependence
- Property crimes

SEOW



Illicit Drug-related Deaths per 100,000

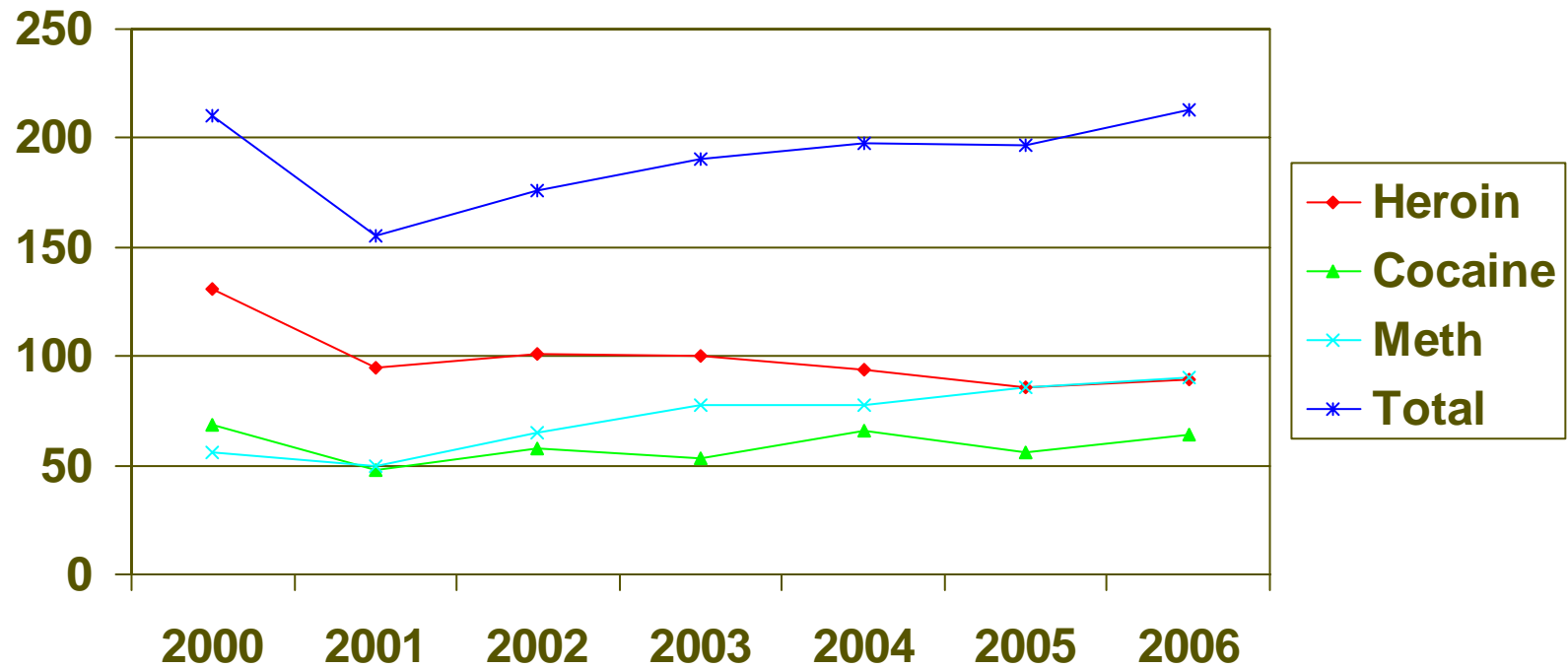


Data Sources: Oregon Vital Statistics Annual Reports and National Vital Statistics Annual Report (1999 to 2003)

SEOW

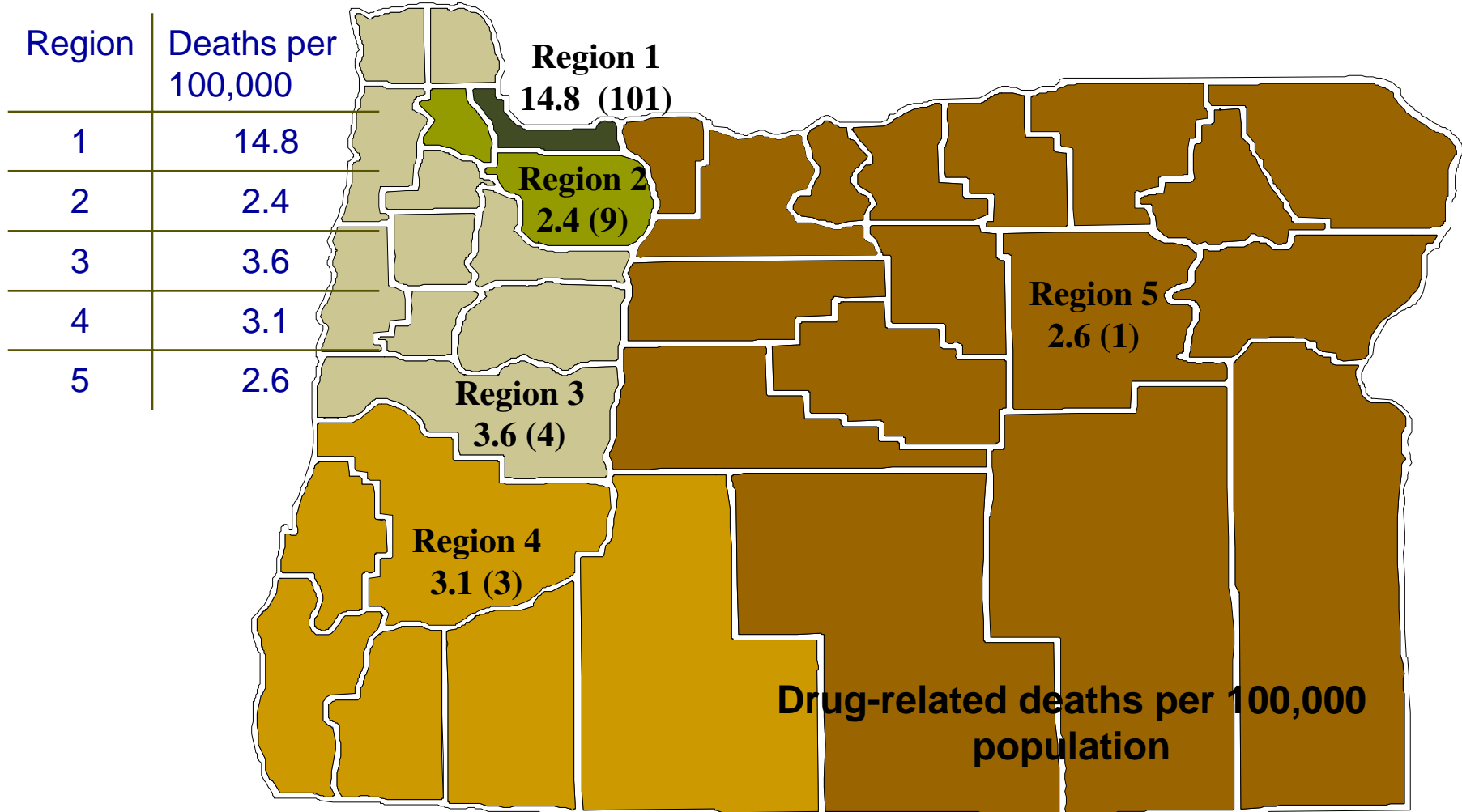


Number of Illicit Drug-related Deaths



Data Source: Oregon Medical Examiner's Annual Drug-related Deaths Report (2000 to 2006)

SEOW

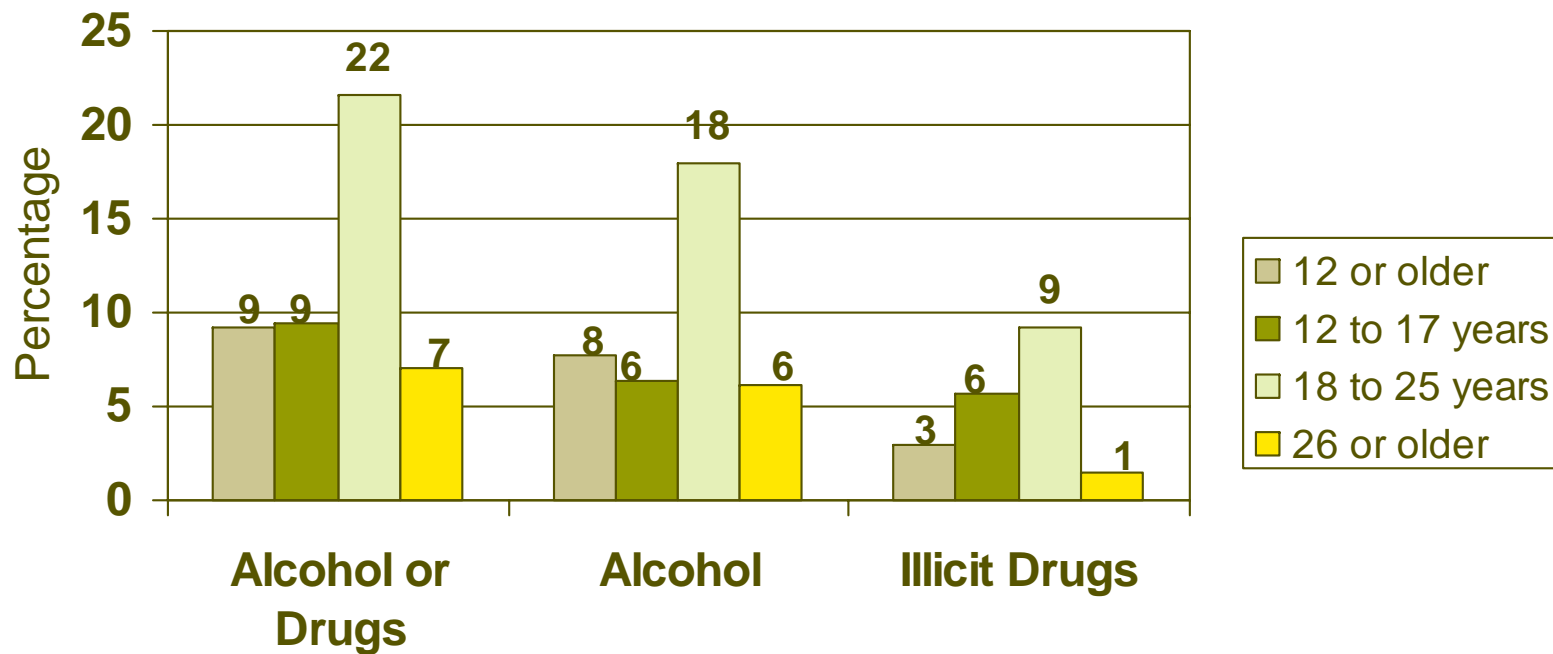


Data Source: Oregon Medical Examiner's Annual Drug-related Deaths Report (2000 to 2006)

SEOW



Percent with Abuse or Dependence, Past Year

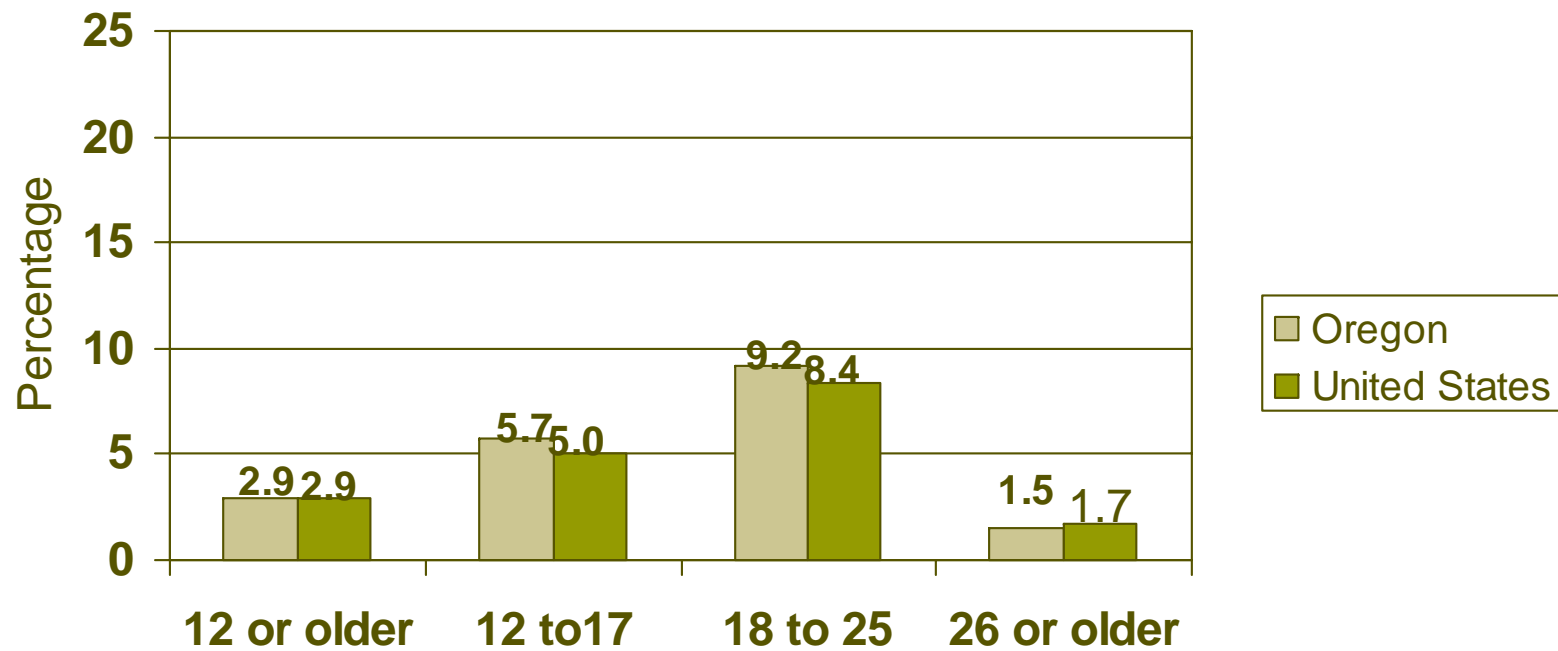


Data Source: Oregon NSDUH Report for Years 2004-2005

SEOW

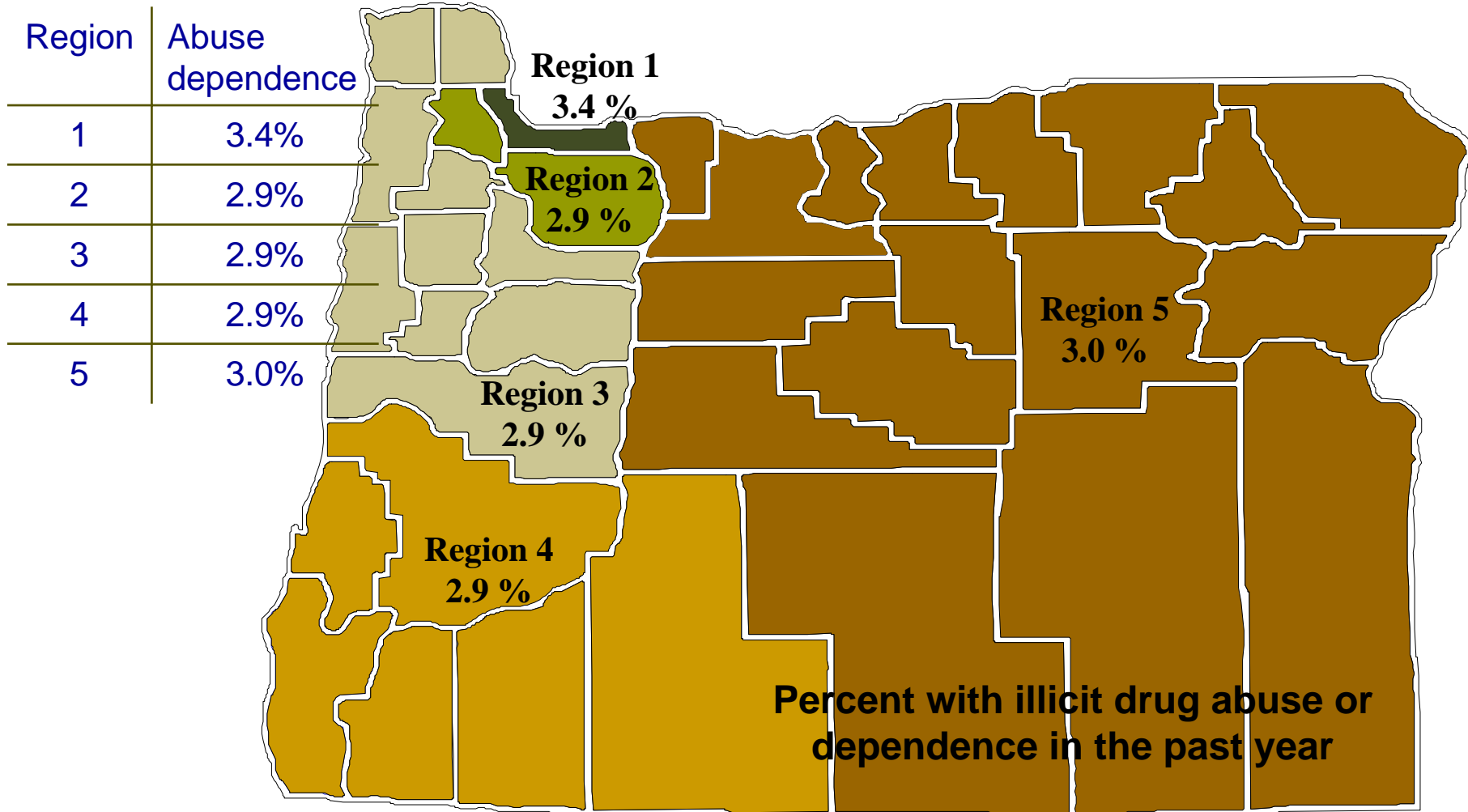


Percent with Illicit Drug Abuse or Dependence



Data Source: Oregon NSDUH Report for Years 2004-2005

SEOW

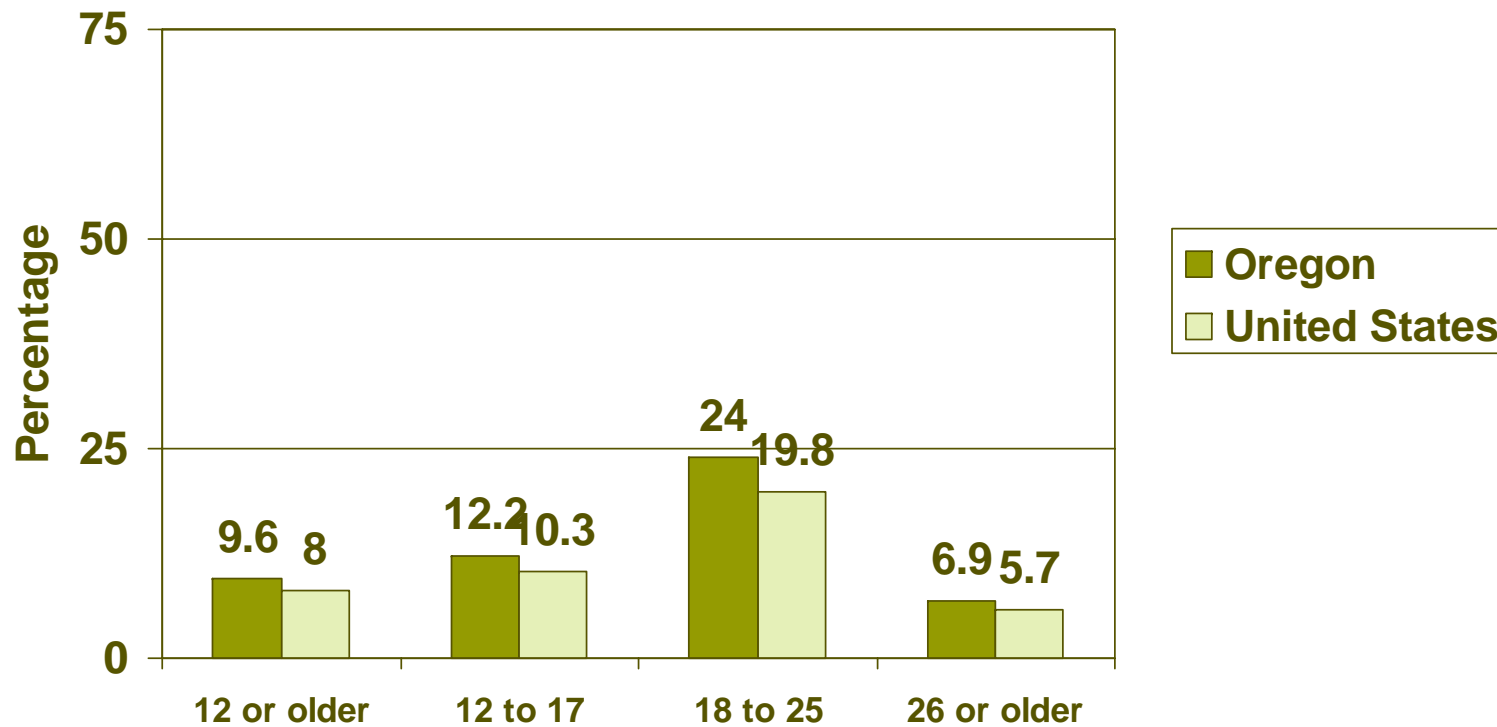


Data Source: Oregon NSDUH Report for Years 2004-2005

SEOW



Illicit Drug Use in Oregon



Data Source: Oregon NSDUH Report , 2005

SEOW



Property Crime Rate per 10,000 Persons



Data Source: State of Oregon Report of Criminal Offenses and Arrests, 2000-2005

SEOW



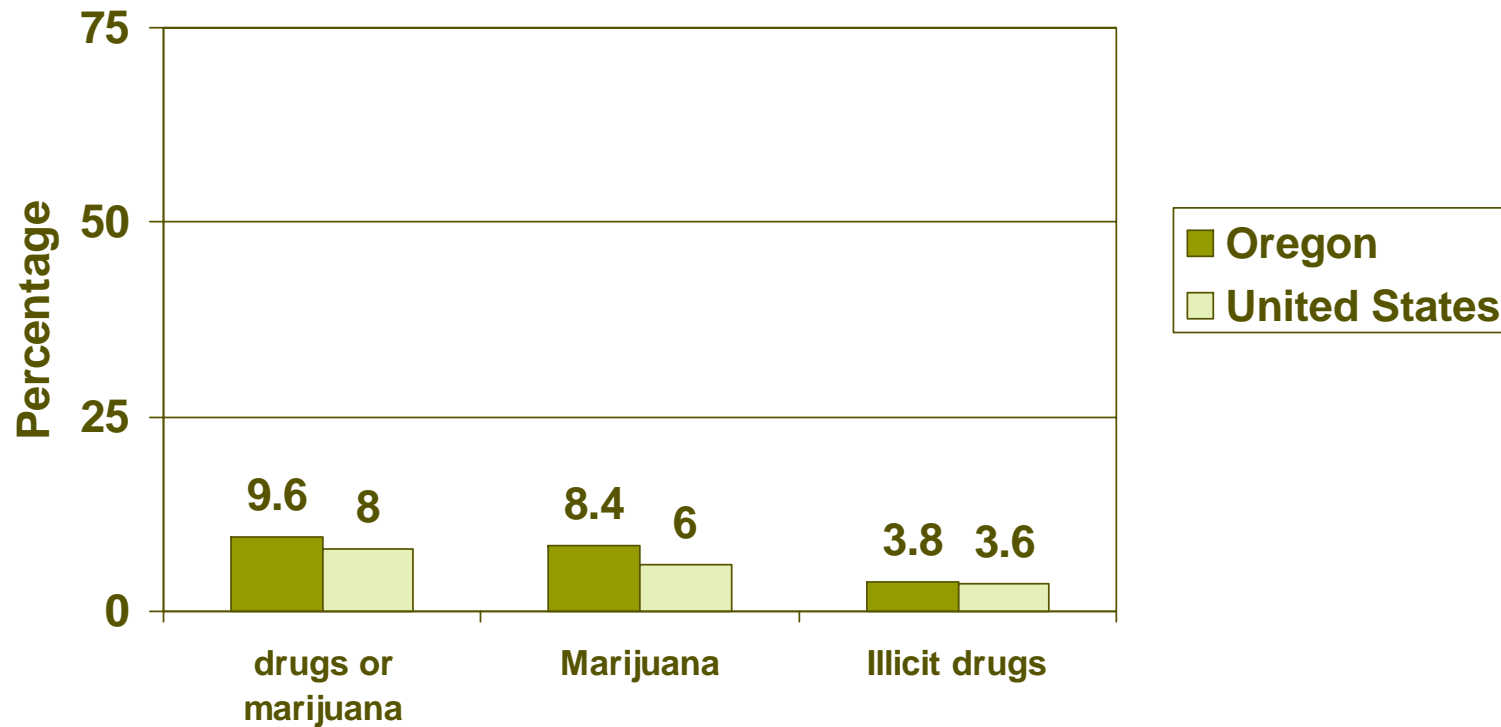
Illicit Drug Use

- Marijuana
- Prescription drugs (pain relievers, stimulants)
- Inhalants
- Cocaine
- Methamphetamine

SEOW



Illicit Drug Use in Oregon, 12 or older

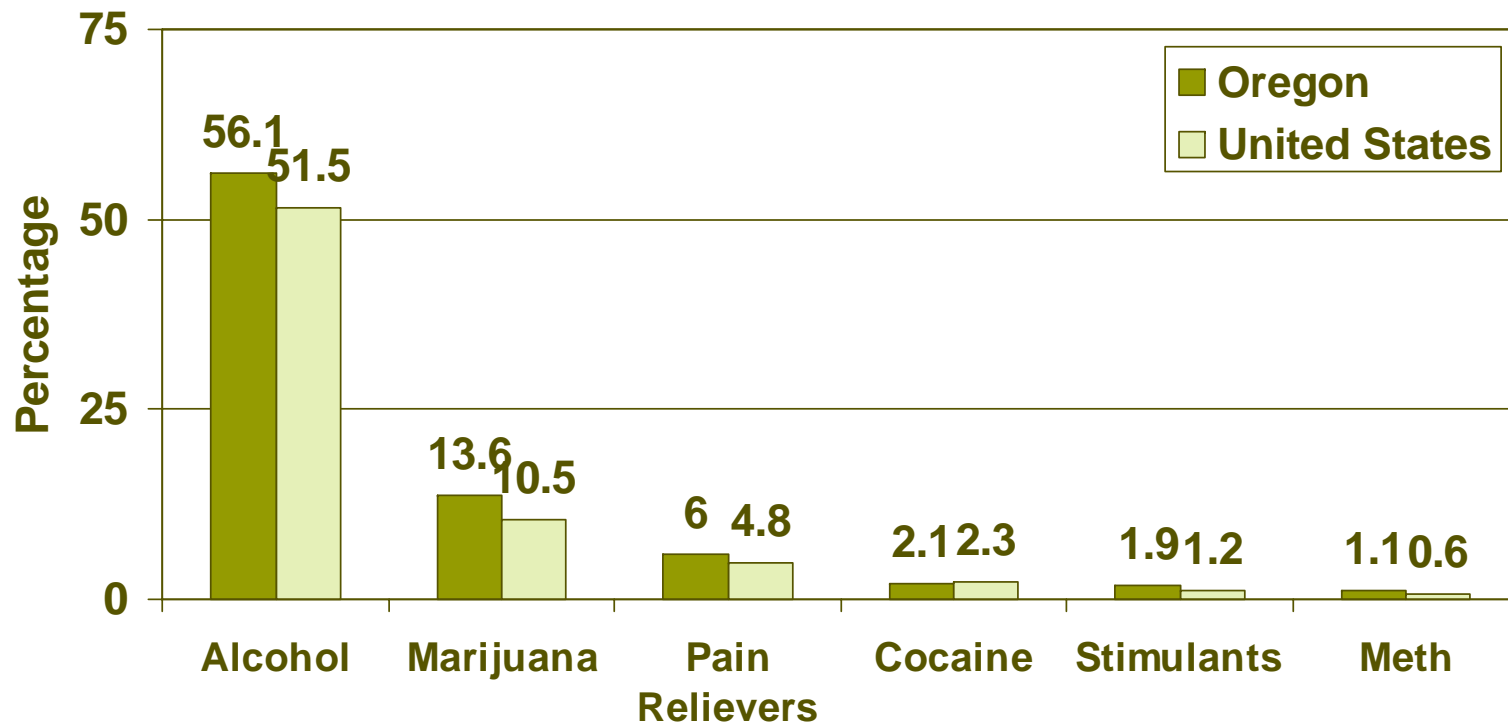


Data Source: Oregon NSDUH Report, 2005

SEOW



Illicit Drug Use in Oregon, 12 or older

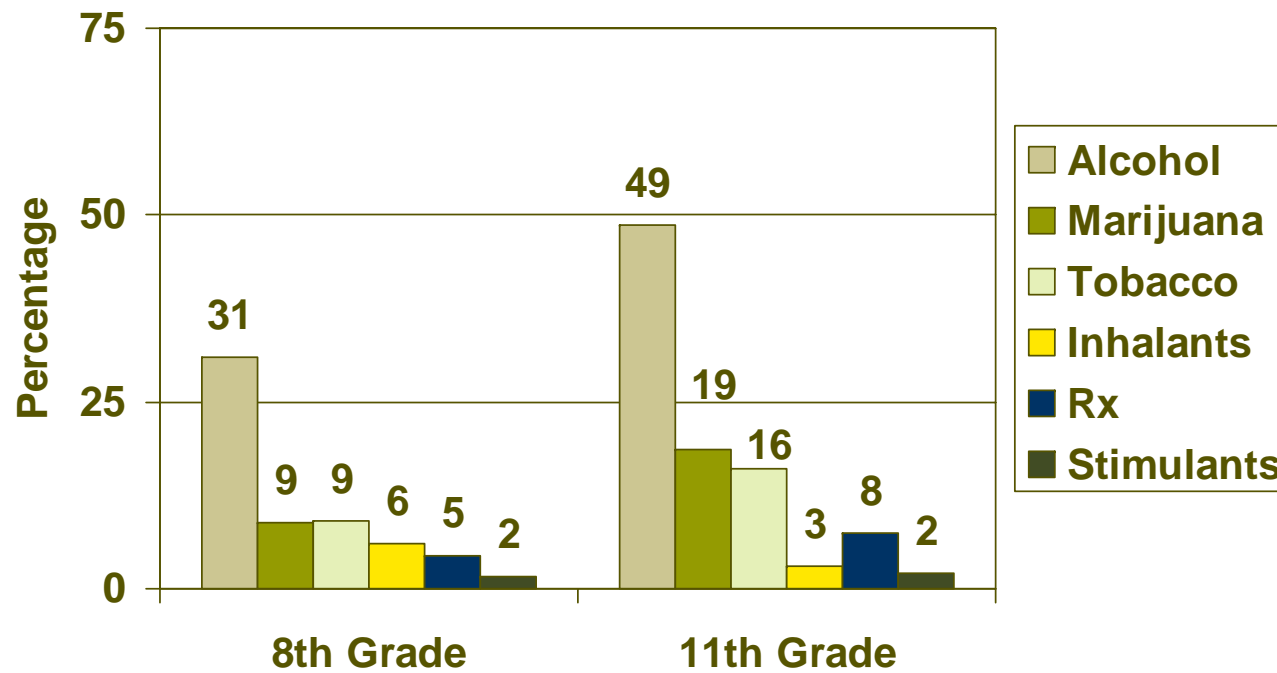


Data Source: Oregon NSDUH Report, 2005

SEOW



Past Month ATOD Use by Oregon Youth

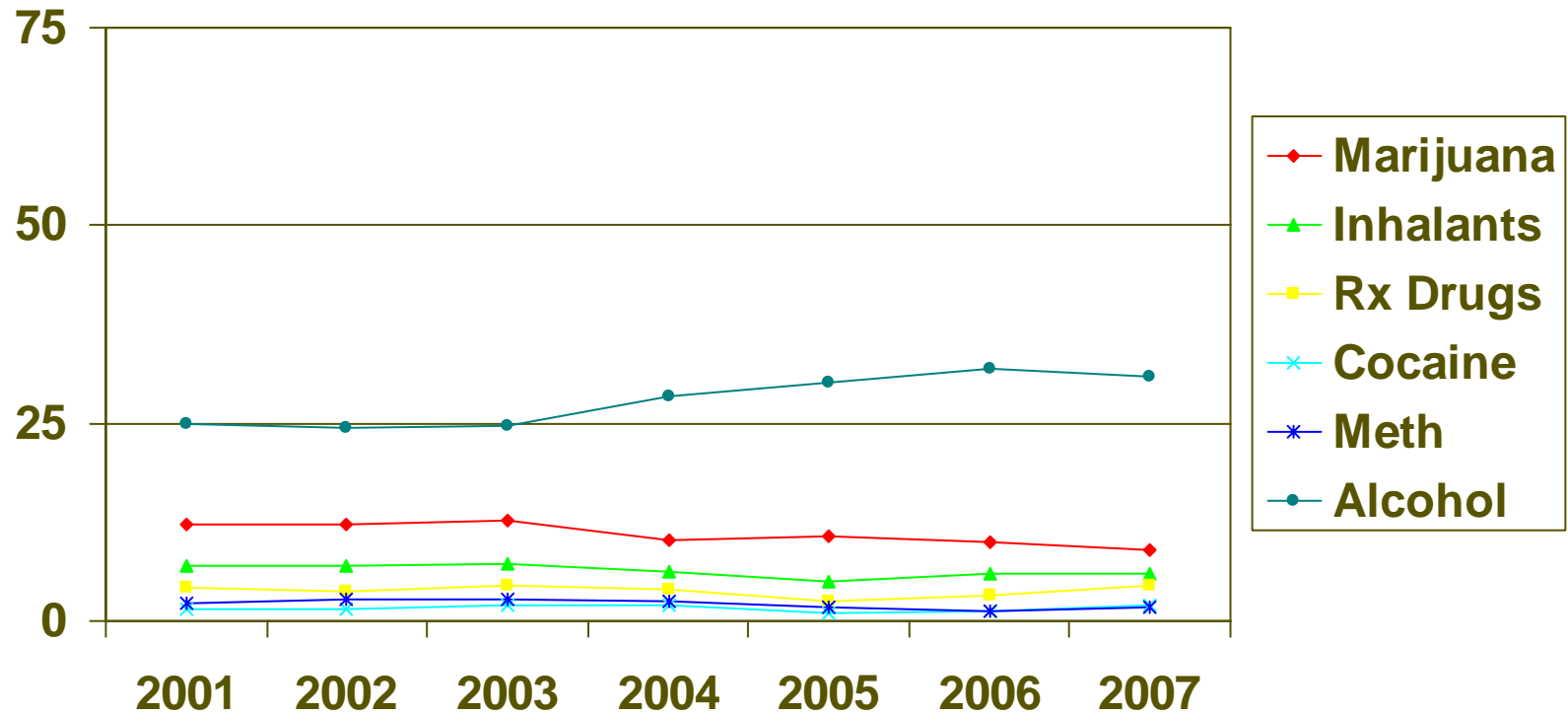


Data Source: Oregon Healthy Teens Survey, 2007

SEOW



Past Month Drug Use, 8th Grade

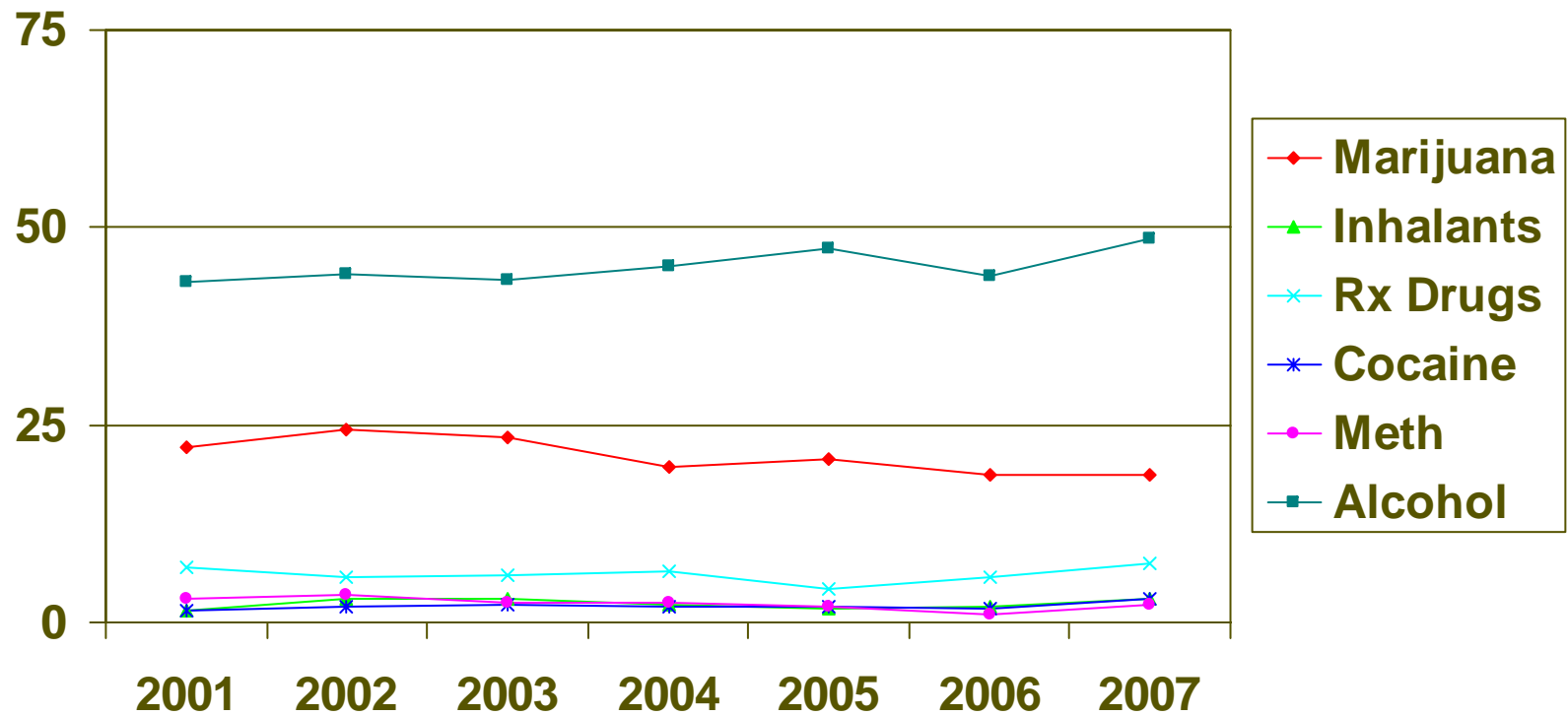


Data Source: Oregon Healthy Teens Survey, 2001 to 2007

SEOW



Past Month Drug Use, 11th Grade



Data Source: Oregon Healthy Teens Survey, 2001 to 2007



Contact information:

Geralyn Brennan

DHS Addictions and Mental Health Division
Program Analysis & Evaluation/Quality
Assurance

500 Summer St. NE E 86

Salem, OR 97301-118

E-mail: geralyn.brennan@state.or.us

Phone: 503.947.2319

Fax: 503.378.8467



*End of Presentation
Thank You.*

