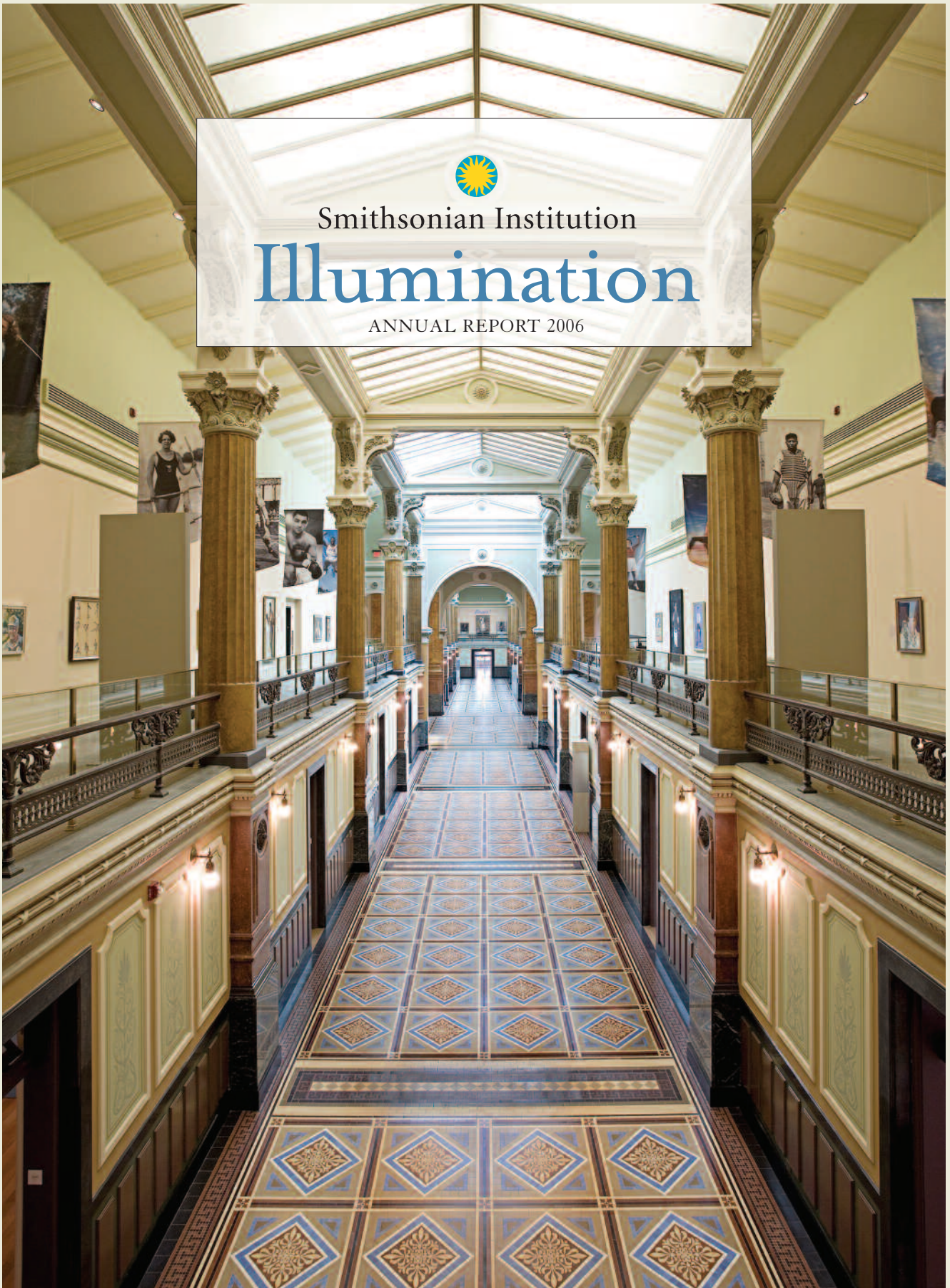




Smithsonian Institution

Illumination

ANNUAL REPORT 2006





THE SMITHSONIAN INSTITUTION
IS THE WORLD'S LARGEST MUSEUM AND
RESEARCH COMPLEX.

THE SMITHSON



Visit

VISITORS
to Smithsonian museums
probe natural wonders,
absorb history's stories,
and appreciate American art.



23 million
museum visits

5,538
volunteers

136.9 million
objects in the collections



85,000
Contributing Members



152
Affiliate organizations

201
Traveling Exhibition Service venues



SMITHSONIAN IN 2006

Endowed by James Smithson and created by an act of Congress in 1846, the Smithsonian illuminates the world through its dedication to the increase and diffusion of knowledge.



Experience

SMITHSONIAN ARTIFACTS, scholars, and exhibitions travel across the country to enlighten and engage citizens in their own communities.

4.5 million

Traveling Exhibition Service visitors

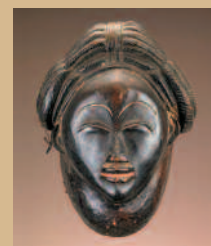
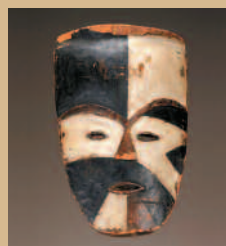
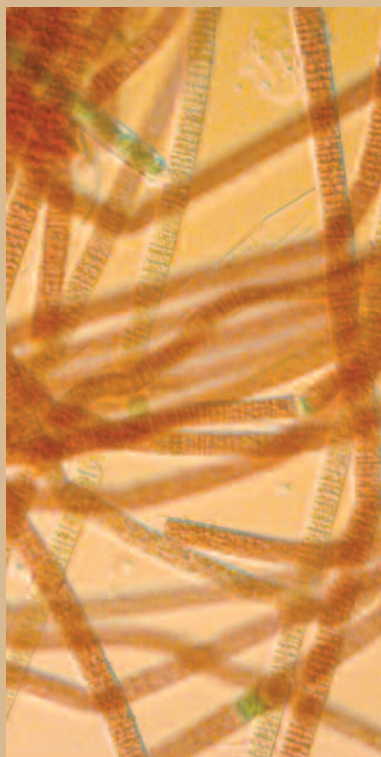
53

Traveling Exhibition Service exhibitions



559 million

Web pages viewed



Connect

THE SMITHSONIAN REACHES individuals directly in homes, offices, and classrooms through interactive Web sites, digitized collections, and virtual field trips.

150 million

Web visitors



FROM THE SECRETARY

IN 2006, THE SMITHSONIAN discovered ancient clues that may shape modern thinking on global warming, brought to life the story of endangered species, discovered a strange new planet, and allowed bright natural light to shine on America's faces.

Visitors to the newly opened Donald W. Reynolds Center for American Art and Portraiture, home to the Smithsonian American Art Museum and the National Portrait Gallery, viewed treasured American artworks in natural light, as the six-year restoration uncovered windows and skylights to breathtaking effect. Perhaps more than any project, the Reynolds Center represents the success of the Smithsonian's public and private partnerships; philanthropic dollars funded a significant percentage of the restoration.

**AS WE LOOK TO
THE FUTURE, OUR
OPPORTUNITIES
HAVE NEVER BEEN
GREATER.**

The Institution's scientific advancements continued to shed light on the natural world. The National Zoo's Asia Trail used the Smithsonian's deep knowledge of conservation science to showcase the everyday lives of rare Asian species.

National Museum of Natural History paleontologists added to the Smithsonian's collection of 40 million fossils — the world's largest — with the discovery of plant fossils that furthered our understanding of global warming.

Smithsonian Affiliations celebrated 10 years of sharing our collections with museums and cultural institutions across the United States, so those who cannot come to Washington can still experience the icons that represent America's ingenuity and history. True to our mission to diffuse knowledge, we launched the ambitious Smithsonian On Demand, a cable channel that uses the power of television to bring our collections — and our scholarship — into homes worldwide.

The National Museum of African American History and Culture took one step closer to realizing its dream of telling America's vital stories from the African American perspective with the selection of a site on the National Mall.

For the past 160 years, we have enlightened and inspired hundreds of millions of Americans through exhibitions, education, and discovery. As we look to the future, our opportunities have never been greater and, with your support, we will realize them.

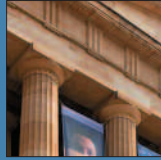


A handwritten signature in black ink, appearing to read 'L. Small'. The signature is fluid and cursive, written in a professional style.

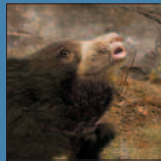
Lawrence M. Small



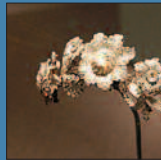
CONTENTS



EXHIBITIONS PAGE TWO



SCIENCE PAGE EIGHT



OUTREACH PAGE TWELVE



YEAR AT A GLANCE PAGE SIXTEEN



OUR VIBRANT FUTURE PAGE TWENTY

FINANCIAL & GIFT REPORTS

PAGE TWENTY-FOUR



National Landmark Is Home to...

DONALD W. REYNOLDS CENTER FOR AMERICAN ART AND PORTRAITURE

ON JULY 1, 2006, after a six-year, \$283 million renovation, the Smithsonian Institution opened the much-anticipated Donald W. Reynolds Center for American Art and Portraiture, home to the Smithsonian American Art Museum and the National Portrait Gallery.

19th-Century Splendor Restored

The artworks in the Reynolds Center tell America's story from a building that is itself an American masterpiece. Visitors walk the halls where Walt Whitman tended wounded Union soldiers and guests at Lincoln's 1865 inaugural ball waltzed in celebration of impending victory. This National Historic Landmark, a magnificent example of Greek Revival architecture, houses 152,500 square feet of exhibition space. Advances in technology allowed the uncovering of the building's 588 windows and two, block-long skylights, letting in natural light that illuminates the building and its art. Architects opened the building's interior to allow an integrated, complementary presentation of art and portraiture.



Showcasing Conservation and Performance

New public spaces offer greater access to objects and highlight conservation processes. At the Luce Foundation Center for American Art, a major study center with visible art storage, visitors can browse more than 3,300 paintings, sculptures, craft and folk art objects from the Smithsonian American Art Museum's permanent collection. In the Lunder Conservation Center, floor-to-ceiling glass walls reveal conservators at work in five labs and studios while mini-cams let visitors peer over the conservators' shoulders as they examine and preserve artworks.

The Nan Tucker McEvoy Auditorium, a 346-seat theater with advanced sound and lighting, enhances the visitor's experience through films, conversations with renowned artists, and live performances of music, dance, and theater. The Robert and Arlene Kogod Courtyard, when completed in late 2007, will feature a dramatic glass canopy, designed by acclaimed architect Norman Foster, and will serve as one of the most exciting public spaces in Washington, D.C.

... American Art Collection



SMITHSONIAN AMERICAN ART MUSEUM

“I hope the visitors who walk through these beautiful galleries will discover new artworks and feel a connection to their own place in today’s world and in our shared past.”

ELIZABETH BROUN, THE MARGARET AND TERRY STENT
DIRECTOR, SMITHSONIAN AMERICAN ART MUSEUM

Connecting to the American Experience

Visitors to the Smithsonian American Art Museum, which holds the nation’s first federal art collection, will now see more than 4,000 works on public display — nearly five times the number previously installed — that capture the aspirations and imagination of the American people across three centuries.

The newly renovated galleries showcase major new acquisitions, from John Singleton Copley’s portrait of Robert Hooper to Nam June Paik’s *Electronic Superhighway: Continental U.S., Alaska, Hawaii*. First-floor galleries, such as *American Experience* and *Folk Art*, show works that embrace the nation’s democratic spirit. *American Art through 1940*, on the second floor, presents works that are linked to major moments in America’s past. Visitors to the third floor, particularly the elegant Lincoln Gallery, experience powerful modern and contemporary art that catches the eye and provokes discussion.

...and Iconic Portraiture



NATIONAL PORTRAIT GALLERY

“You’re not just coming in to look at brushstrokes, but to experience an encounter between lives. We are a dinner party with history.”

MARC PACTER, DIRECTOR, NATIONAL PORTRAIT GALLERY

Portraits Reflect American Character

America’s striking diversity is reflected in its faces. More than 900 paintings, photographs, drawings, and sculptures exhibited in the National Portrait Gallery portray citizens who have made significant contributions to the nation.

America’s Presidents, the only complete collection of presidential portraits outside the White House, takes visitors on a visual tour of American history. Lincoln’s war-weary visage, Eisenhower’s military bearing, and Kennedy’s thoughtful gaze give glimpses into the men who shaped America. Portraits of everyday citizens, painted by winners of the Outwin Boochever Portrait Competition, share the second floor with America’s presidents.

In *American Origins*, visitors meet important people in American history, from Pocahontas to Cesar Chavez, and in *Champions*, they learn about achievements of stellar performing artists and sports figures that extend beyond their individual craft or sport. Through the portraits, visitors glimpse the wisdom, courage, and spirit that defines our national character.

National Mall Named as Museum Site

NATIONAL MUSEUM OF AFRICAN AMERICAN HISTORY AND CULTURE

“When I heard that the selection committee had chosen the site on the Mall, I could not stop smiling, and I knew that all of my ancestors were smiling too. African American history is worthy of a place in America’s front yard.”

LONNIE BUNCH, DIRECTOR, NATIONAL MUSEUM OF AFRICAN AMERICAN HISTORY AND CULTURE

The idea of a museum dedicated to African American history, culture, and art came several steps closer to reality in 2006. After extensive consideration of four potential sites designated by Congress, the Smithsonian Regents chose a National Mall location as the home for the new National Museum of African American History and Culture.

Preparing to Launch

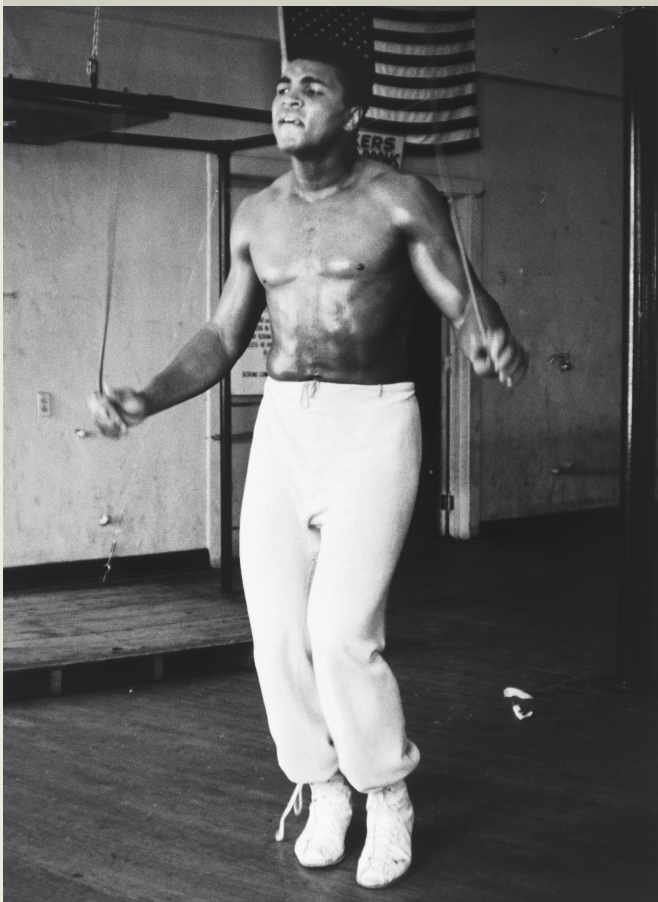
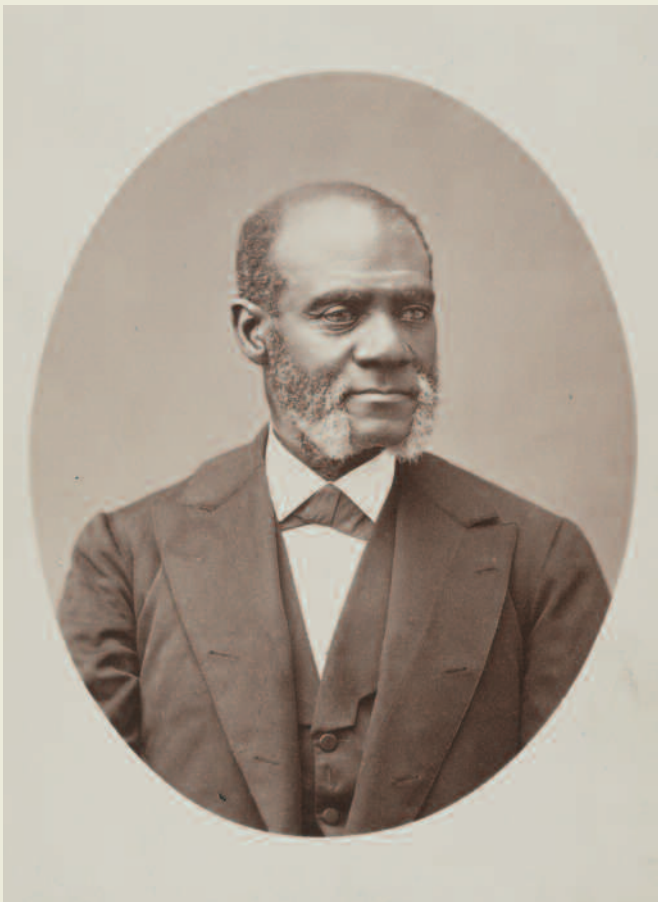
The announcement of the site, adjacent to the Washington Monument, met with universal approval from the museum’s Advisory Council, which includes some of the most respected leaders in America. Other significant accomplishments in 2006 included hiring core museum staff, beginning collection and program planning, and laying the groundwork for a national launch.



A Vision for the Future

For Director Lonnie Bunch, one of the main goals of the new museum is to showcase how the African American experience shaped national culture. The issues of slavery and civil rights, for example, challenge Americans to examine national touchstones, such as freedom and equality. Exhibitions will reflect the rich historical and cultural contributions of African Americans, from Sojourner Truth to Duke Ellington and Martin Luther King, Jr. Using the drawing power of the Smithsonian, the museum plans to direct visitors to collections throughout the nation that document African American history and culture.

Currently, museum staff are working to establish a national presence through a Web site and a national tour to encourage preservation of objects that illustrate and document African American history. The museum also plans a touring exhibition with the National Portrait Gallery featuring the portraits at right.



Asia Trail Wows Zoo Visitors

NATIONAL ZOOLOGICAL PARK

“The animals are ambassadors. Their stories represent both the quality of Smithsonian science and the plight of their entire species. Natural habitats are shrinking every day. At the Zoo, we work to save the last precious bits of wildlife left on Earth.”

TONY BARTHEL, CURATOR, ANIMAL CARE AND EXHIBITIONS,
NATIONAL ZOOLOGICAL PARK

Welcome to the Asia Trail, the National Zoo’s newest exhibition and a key part of the Smithsonian’s extensive plan to refurbish the Zoo, creating animal environments that encourage conservation and interest and excite visitors. Spanning nearly six acres — almost a full quarter of the park — Asia Trail represents the most significant change in the Zoo’s infrastructure in 40 years.

Showcasing Smithsonian Science

A popular stop on the Asia Trail is the Fujifilm Giant Panda Habitat, where visitors can watch Tai Shan, the most famous giant panda cub in the world. In addition,



the Asia Trail is home to six other Asian species: sloth bears, red pandas, fishing cats, Japanese giant salamanders, clouded leopards, and Asian small-clawed otters.

The Zoo’s scientific and conservation work helps animals all over the world thrive. Within the Zoo itself, staff research provides better stewardship for the animals and better information for visitors. Stations along the Asia Trail highlight selected scientists so visitors understand the people behind the research and the tools they need. The stories they tell may also spark interest in young visitors who can become the next generation of scientists.

Fun Family Learning Experience

Families who come for outdoor fun will also benefit from informal learning opportunities scattered along the Asia Trail. Visitors can call on interactive screens and kiosks that inform, question, and enlighten. Decision Stations provoke discussion by presenting the difficult choices conservation poses and asking respondents to take a stand. Logbooks along the trail explain common animal behaviors, and Curiosity Stations allow visitors to request more information on a specific animal and receive e-mailed answers.



Fossils Show Prehistoric Global Warming

NATIONAL MUSEUM OF NATURAL HISTORY

“I study fossils because they give us a long-term record of evolutionary, ecological, and environmental change. The history of life on this planet has a lot to tell us about our possible future.”

SCOTT WING, PALEOBIOLOGY DEPARTMENT CHAIRMAN,
NATIONAL MUSEUM OF NATURAL HISTORY

The Past as Prologue

For those who think that global warming is a 21st-century phenomenon, Scott Wing, a scientist at the Smithsonian’s National Museum of Natural History, has news about the past.

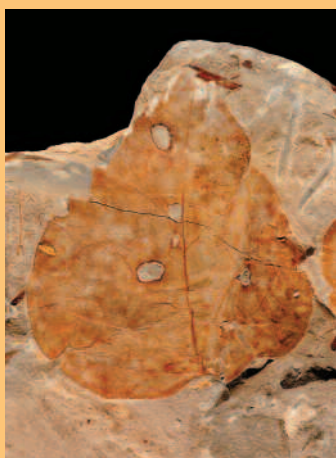
Wing headed an international team of scientists whose discovery of plant fossils in the Bighorn Basin of northwestern Wyoming helps document the consequences of a sudden global warming, called the Paleocene-Eocene Thermal Maximum (PETM), 55 million years ago. Experts believe the PETM, which was caused by a massive release of carbon into the atmosphere, may be an analogue for what is happening today as humans burn increasing amounts of fossil fuel and release large amounts of carbon dioxide.



Plant Movement Signals Global Warming

For nearly 15 years, Wing and his team dug through sediments deposited during uplift of the Rocky Mountains, looking for fossils of the right age and condition. Their discoveries proved that warming caused major shifts in the distribution of plants, allowing southern-dwelling trees and shrubs, related to poinsettia, sumac, and paw-paw, to move some 1,000 miles north in less than 10,000 years. These subtropical invaders flourished for about 100,000 years in what we now know as Wyoming. As carbon dioxide levels dropped and temperatures cooled again, plants related to birches and bald cypress came to dominate the vegetation.

The study and interpretation of this fossil record helps other scientists project future changes in plant life that may result from global warming induced by human activity.







Smithsonian Icons Go Cross Country

SMITHSONIAN AFFILIATIONS

“Smithsonian Affiliations allows us to display marvelous artifacts that are rarely seen outside of Washington. The Smithsonian’s traveling exhibitions are absolutely extraordinary. Visitors to our museum see things they would otherwise never have seen in their lifetimes.”

LEO SMITH, DIRECTOR, DURHAM WESTERN HERITAGE MUSEUM

Celebrating its 10th anniversary, Smithsonian Affiliations has facilitated the loan of more than 7,000 objects to member museums and cultural institutions in 39 states, the District of Columbia, Panama, and Puerto Rico.

America’s Icons on the Road

Visitors to Omaha’s Durham Western Heritage Museum recently caught the figurative flicker from Thomas Edison’s first light bulb and the flash of the Merriweather Post diamond tiara without ever leaving their own town. Thanks to Smithsonian Affiliations, an outreach program that brings artifacts and resources from the Institution closer to the public, the Nebraska museum has been able to provide a wide range of visitor experiences and education.



Affiliations Educates and Enlightens

Durham has been one of Affiliations’ outstanding partners. The museum hosted *American Originals: Collections from the Smithsonian*, 174 objects that reflect three centuries of ingenuity. At a special program arranged by The Smithsonian Associates, Smithsonian Scholars spoke to Nebraskans about the field of engineering, from ancient Egyptian times to the present. To commemorate Durham’s diamond jubilee, the National Museum of Natural History loaned exceptional objects from the gem and mineral collection. In a program presented by the Smithsonian Institution Traveling Exhibition Service, eighth-graders in the Omaha public school system visited the exhibition *First Ladies: Political Role and Public Image* and learned about the role of America’s presidential wives from Smithsonian educators.

Affiliates enjoy other Smithsonian resources as well, including education and performing arts programs, expert speakers, teacher workshops, and technical training for museum professionals.

The 7 million visitors who attended Affiliates events and saw Smithsonian collections in their own hometowns last year demonstrate that the Smithsonian’s reach extends far beyond the National Mall.





Experts: In Demand, On Demand

SMITHSONIAN BUSINESS VENTURES

“The Smithsonian has long sought to do on television what it has done so successfully in print with Smithsonian magazine — reach millions of people who would not otherwise have their lives enriched by its fascinating content.”

LAWRENCE SMALL, SECRETARY, SMITHSONIAN INSTITUTION

In what may be the perfect blend of voice and venue, the Institution realized a long-held dream in 2006 with the creation of Smithsonian Networks. Smithsonian On Demand, the partnership’s first initiative, will bring high-quality programming to millions worldwide via digital cable television.

Extending the Smithsonian’s Reach

Smithsonian On Demand has the potential to reach a market much larger than the Institution’s 23 million annual visitors and will provide an electronic platform to showcase priceless objects, innovative research, and informative cultural programs. The partnership expects to produce 100 hours of programming a year on history, art, and science.

Smithsonian On Demand will tap into the power of television and shine the light on the Institution’s vast collections and scholarship.



Engaging the Next Generation

Cable television will introduce the Smithsonian to young Americans who increasingly turn to “on demand technology” for information and entertainment. Plans call for programming to include documentaries, live performances, and features on exhibitions and research, all reflecting Smithsonian standards of accuracy and quality. Smithsonian On Demand is the latest venture to take the Institution outside its walls; others include the Smithsonian Institution Traveling Exhibition Service, *Smithsonian* magazine, and a partnership with HarperCollins to publish works of nonfiction.

Enhancing Institution-wide Work

All proceeds to the Institution from Smithsonian On Demand will go to funding a wide variety of activities not supported by federal dollars, such as exhibitions, education initiatives in schools, and the Smithsonian’s work with 152 affiliated museums and cultural institutions across the country.



Museums, Research Centers, and Programs

HIGHLIGHTS from the Smithsonian Institution's museums, research centers, and programs of national outreach in 2006



Anacostia Community Museum

The biannual Career Day introduced local students to museum career opportunities with a tour and staff-led activity workshops on collections, exhibitions, research, education, finance, and administration.



Archives of American Art

The Lawrence A. Fleischman Gallery, named in honor of the Archives' co-founder, opened July 1 in the Donald W. Reynolds Center for American Art and Portraiture with exhibitions drawn from a collection of more than 16 million items showcasing the history of visual arts in America.

Freer Gallery of Art and Arthur M. Sackler Gallery

In the Beginning: Bibles Before the Year 1000 was one of many exhibitions and events the Sackler Gallery held throughout the year to celebrate the 100th anniversary of Charles Lang Freer's gift of his collection.



Center for Folklife and Cultural Heritage

More than a million visitors to the 40th annual Smithsonian Folklife Festival saw North America's rich diversity come to life through traditional Native American and Latino music and dance; hip-hop, jazz, blues, and gospel concerts; and spontaneous jam sessions.



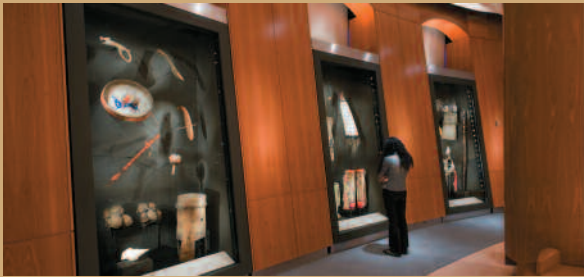
Cooper-Hewitt, National Design Museum

The Feeding Desire: Design and the Tools of the Table, 1500-2005 exhibition of historic and modern flatware drew a record number of visitors to the museum and included a sold-out series of education programs featuring celebrity chefs and restaurateurs.



Hirshhorn Museum and Sculpture Garden

At the Hirshhorn Museum's *Directions* series, visitors of all ages took part in the creative process and contributed to a living work of art by collaborating in artist Oliver Herring's interactive "Task," a performance piece staged on the museum's plaza.



National Museum of the American Indian

The George Gustav Heye Center in New York opened the new Diker Pavilion for Native Arts and Cultures in the Alexander Hamilton U.S. Custom House to showcase performances, special art, and educational programs for museum visitors.



National Museum of African Art

The *African Gold from the Glassell Collection* exhibition displayed a rich variety of jewelry and royal regalia from the region formerly known as the Gold Coast, including such works as headpieces, linguist staffs, swords, and figurative sculptures.



Museum Conservation Institute

To prepare for the reopening of the Patent Office Building, home to the Smithsonian American Art Museum and the National Portrait Gallery, staff consulted on the building structure and collections environment and worked with museum staff in conserving objects, including William Rimmer's 1861 sculpture *The Falling Gladiator*.

National Air and Space Museum

Families flocked to three annual events — *Space Day*, *Become a Pilot Family Day*, and *Mars Day!* — that made learning about space fun for all, with appearances by astronauts, aircraft tours, IMAX films, and such hands-on activities as using a robotic arm.



National Postal Museum

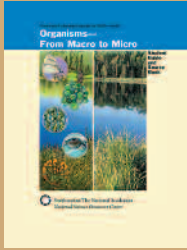
Exhibitions in the *Moving the Mail* gallery explored the complexities of mail delivery and highlighted the postal system's critical role in creating America's commercial aviation industry along with the pilots and aircraft that made it possible.



National Museum of American History, Kenneth E. Behring Center

Featuring recently acquired hip-hop objects, from turntables to graffiti art, the case exhibit *Hip-Hop Won't Stop: The Beat, The Rhymes, The Life* previewed a planned exhibition that will trace hip-hop from its urban roots in the 1970s to today's influential cultural explosion. Grandmaster Flash donated the turntable shown.



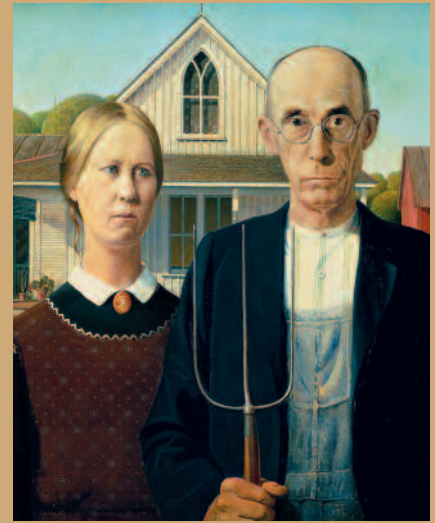


National Science Resources Center

A new study found school districts are far more likely to adopt research-based science curriculum if they participate in NSRC leadership institutes, which feature science curriculum programs and instructional materials that reach 25 percent of the nation’s elementary and secondary students.

Smithsonian Asian Pacific American Program

Commemorating a century of Filipino migration to the United States, the photo exhibition *Singgalot — Ties That Bind: One Hundred Years of Filipino Presence in America* documented the Filipino-American experience from early migration to the diversity of contemporary life and communities.



The Smithsonian Associates

Norway: A Centennial Celebration commemorated Norway’s 100 years as a sovereign state with three months of educational programs and events reflecting the country’s history, traditions, cultural arts, and food, including a lecture on contemporary Norway presented by Queen Sonja.



Smithsonian Center for Education and Museum Studies

During Smithsonian Day for the 2006 Teachers of the Year, outstanding teachers from across the nation went behind the scenes with Smithsonian educators at eight Smithsonian sites to discuss new ways to integrate Smithsonian resources into classroom teaching.

Renwick Gallery of the Smithsonian American Art Museum

Grant Wood’s Studio: Birthplace of American Gothic presented the artist’s decorative art and design work within the larger context of his paintings, drawings, and prints, including Wood’s iconic masterwork *American Gothic*, displayed in Washington, D.C., for the first time in 40 years. [Grant Wood (American), *American Gothic*, 1930. The Art Institute of Chicago: Friends of American Art Collection, 1930.934. Photography ©The Art Institute of Chicago]

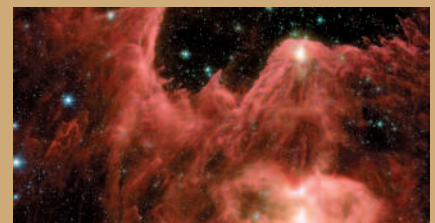


Smithsonian Environmental Research Center

For three decades, the center has conducted a pioneering field study on the response of ecosystems to rising atmospheric carbon dioxide. This year, in a major new undertaking, the center added instruments to measure soil levels and help us understand this aspect of global climate change.

Smithsonian Astrophysical Observatory

The infrared eyes of NASA’s Spitzer Space Telescope yielded this image of a gigantic cloud of cool gas and dust that astronomers dubbed “Mountains of Creation.” Shining red in this color-coded image, the cloud is sculpted into pillars by radiation and winds from a hot, massive star. The image offers new clues about how massive stars are born.





Smithsonian Institution Archives

Through a new cooperative effort with Seoul National University, graduate students in archival science came to the Smithsonian Institution Archives for a two-week internship program.



Smithsonian Institution Libraries

Eight of the world's major natural history and botanical libraries are building the Biodiversity Heritage Library, a project that will digitize more than 200 years of biodiversity literature from their collections and make it freely accessible via the Internet.

Illustration from *Metamorphosis insectorum surinamensium*, 1705.



Smithsonian Institution Traveling Exhibition Service

The exhibition *Wondrous Cold: An Antarctic Journey* featured images of the mysterious continent's terrain and wildlife by photographer Joan Myers, who spent four months capturing scientific study and daily life at McMurdo Station, Antarctica's premier research facility.



Smithsonian Tropical Research Institute

Smithsonian Tropical Research Institute staff led a new research program focused on evolutionary neurobiology and behavior associated with brain miniaturization.

Smithsonian Latino Center

The ¡*Smithsonian Con Sabor!* fundraising gala launched an annual tradition of celebrating a Latin American country highlighted in a Smithsonian Latino Center program. This year, the music, arts, and culture of Colombia were featured.



Smithsonian Marine Station at Fort Pierce

Ongoing research at the station is focused on how nitric oxide serves as a cell signal in marine cyanobacteria and the role the chemical may play in regulating the production of ecologically important metabolites. Pictured here are brownish, filamentous marine cyanobacteria *Lyngbya confervoides* overgrowing soft coral.



Renovations Will Transform Museum

NATIONAL
MUSEUM OF
AMERICAN
HISTORY

OVER THE NEXT DECADE, a complete transformation of the National Museum of American History, Kenneth E. Behring Center will create light-filled, easily navigated spaces and major new exhibitions, connecting Americans to their shared values and stories. To complete the first stage of the renovation safely and efficiently, the museum closed for a 20-month period, beginning in September 2006.



The Star-Spangled Banner's New Home

At the renovation's core is the Star-Spangled Banner Gallery, a new home for the flag that inspired the national anthem. An eight-year conservation project funded by Polo Ralph Lauren Corporation, The Pew Charitable Trusts, the Save America's Treasures program, and others will ensure that the most famous flag in America once again will be presented in a place of honor. When completed, the gallery will display the flag at a 10-degree angle to reduce stress on the fabric and at light levels that simulate the early dawn. Surrounding displays will describe the 1814 Battle of Baltimore and how this flag, which inspired the poem that later provided the words for our national anthem, became a national treasure.

Compelling American Stories

The museum has exciting plans to revitalize the entire visitor experience, renewing and integrating exhibitions to present a more coherent view of our national story. In subsequent phases, the museum will open a new Welcome Center and a lively introductory exhibition that offers a dynamic overview of American history. Major exhibitions, such as *First Ladies* and *The American Presidency*, will be refurbished to bring the past into the 21st century in a compelling way.

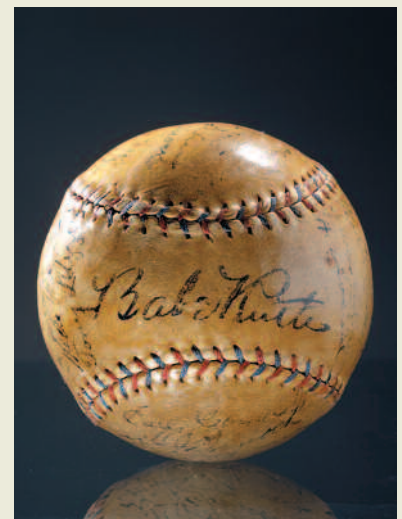
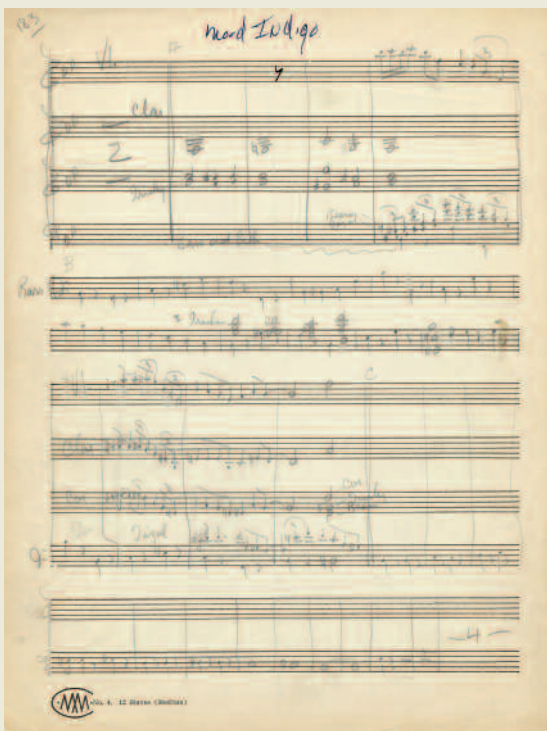
Sweeping Architectural Renovation

Top-to-bottom renovations of the museum's central core will refresh the 40-year-old infrastructure, bringing in natural daylight, and refurbish visitor amenities, such as cafes and bookstores. A center atrium will serve as a "public square" for programs and special events, and a dramatic central staircase made of glass will link the first-floor entrance on Constitution Avenue to the second-floor entrance on the National Mall. Together, these improvements will create a soaring, sunlit space.



VISITORS to Washington can still enjoy a selection of the museum's best-known objects, such as Lincoln's top hat and Dorothy's ruby slippers, as the National Air and Space Museum hosts *Treasures of American History*, an exhibition featuring 150 iconic artifacts, through spring 2008.

The public can also continue to browse collections and exhibitions online via the museum's Web site at www.americanhistory.si.edu.



Illuminating the Natural World

NATIONAL
MUSEUM
OF NATURAL
HISTORY

MANKIND'S INCREASING POWER to alter the Earth carries with it a greater obligation to understand how our environment works. The Smithsonian's National Museum of Natural History rises to this challenge with four new exhibitions — opening by 2012 — that will present an illuminating and integrated view of the world we live in.



Butterfly Pavilion

Opening in November 2007, the Butterfly Pavilion will integrate living displays of tropical butterflies and plants with the museum's collections to tell the story of how plants and animals have co-evolved and adapted over time. The new exhibition will occupy 2,100 feet of enclosed, climate-controlled space adjacent to the museum's popular Insect Zoo.



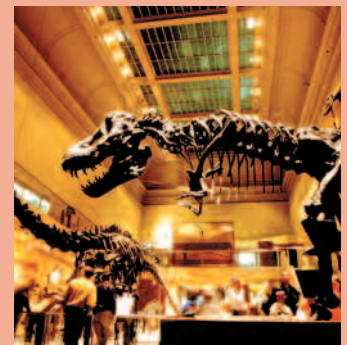
Ocean Initiative

Because oceans are a global system essential to all life, including our own, the museum has launched the Ocean Science Initiative. The new Ocean Hall, a 26,000-square-foot exhibition that will open in 2008, will use high-definition video, life-sized models, and a live coral reef to educate and enlighten visitors as it probes the mysteries of the deep. A comprehensive Web site will serve as a forum for scientific exchange and a resource for educators.



Human Origins

What Does it Mean to be Human? — opening in 2009 — will tell the story of human development through dynamic exhibitions in three galleries and interactive media presentations. Visitors will walk in 3.5 million-year-old footsteps, explore a woodland, walk through a 30,000-year-old cave with Paleolithic paintings, and use computer software to see how they would look as one of their prehistoric ancestors. The Human Origins Initiative will also expand research through field study in Africa and Asia, while a Web site will share images of the museum's collections and offer curricula for teachers.



Dinosaur Hall

Design work on the Dinosaur Hall will begin in 2009, yet paleontologists are already searching in the Hell Creek, Montana, region for the remains of a complete T-rex to serve as its centerpiece. Dinosaurs illustrate an important chapter in the evolution of life on Earth, and the revamped exhibition will use 30,000 square feet of space to place dinosaurs and other extinct land animals in their ecosystems. The exhibition will cover eras from 500 million years ago to the last ice age and will explore how organisms responded to their changing environment.

Investing in People

INTELLECTUAL CAPITAL

THE SMITHSONIAN CARES for the most precious objects, hosts the largest audiences, mounts the finest exhibitions, and sponsors the broadest research. The need for excellence in all that this Institution does comes with the trust of the American people. Along with transforming its facilities, the Smithsonian expects to continue to attract leaders and scholars through building its endowment funds.



Attracting a New Generation of Experts

Smithsonian scientists and researchers turn plants into medicine, conserve precious works of art, and deepen our understanding of history. With research so critical a part of its mission, the Smithsonian is continuing to maintain its leadership in science, art, American history, and culture by attracting and rewarding the best and the brightest minds. Private gifts that build endowment develop and enrich the Institution's intellectual resources. The Secretary's Distinguished Scientific Research Fellowship, established this year, is an annual award whose recipient will be a post-doctoral fellow of exceptional promise selected from a group of candidates representing the Institution's broad range of scientific disciplines. The forward-looking fellowship helps build the Smithsonian's next generation and makes a strong statement about the Institution's commitment to excellence.



Endowed Directorships Vital to Mission

The men and women who direct the Smithsonian's museums transform and interpret its collections for every generation. They are the keepers of this nation's culture and the leaders who remind us what it means to be Americans. Because extraordinary people also have extraordinary options, the Smithsonian has embarked on a plan to endow directorships for all of its museums and research centers; the endowments will ensure that the Smithsonian will recruit and retain exceptional leaders. Recently, pledges by two private donors have established the first two named, endowed directorships. These prestigious positions will signal to the world the esteem and respect accorded to their holders.

Financial Report

THE GRAND OPENING in July 2006 of the Donald W. Reynolds Center for American Art and Portraiture was a milestone in the Smithsonian's history and a defining event in fiscal year 2006. Marking the impressive rebirth of the National Portrait Gallery and the Smithsonian American Art Museum, the spectacular historic renovation of the Patent Office Building also drew attention to the Institution's all-out effort to revitalize its aging physical infrastructure.

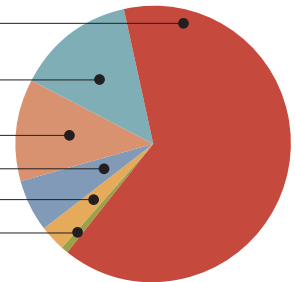
The Smithsonian's financial health continues to improve. The Endowment's value grew substantially during the year, and the Institution's net assets increased by 7 percent, or \$146 million, to a total of more than \$2.2 billion, a new record high.

The Smithsonian receives funding from direct federal government appropriations, from other governmental entities, and from private sources. With private funds, the Institution undertakes new ventures and provides a critical margin of excellence for carrying out innovative research, expanding and strengthening our national collections, developing and building new facilities, opening state-of-the-art exhibitions, and reaching out to America's diverse communities. Federal appropriations conserve our national collections; sustain basic research; educate the public; operate, maintain, and protect the large Smithsonian museum and research complex; and provide other administrative and support services. The 2006 annual audit was conducted by KPMG LLP. For a complete set of audited financial statements, contact the Office of the Comptroller at (202) 633-7250.

FY2006 REVENUE

September 30, 2006

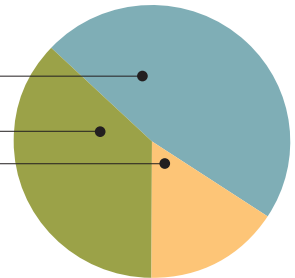
Federal Appropriations	64%
Government Grants & Contracts	14%
Contributions & Private Grants	12%
Investment Earnings	6%
Business Ventures	3%
Other	1%



FY2006 EXPENSES

September 30, 2006

Salaries & Benefits	47%
Other Operating Expenses	37%
Capital Expenses	16%



FY2006 FINANCIAL ACTIVITY

\$ Millions, September 30, 2006

	AMOUNT	
	2006	2005
Operating Revenue	979	986
Operating Expenses	880	805
Increase in Operating Net Assets	99	181
Increase in Other Assets	47	65
Total Increase in Net Assets	146	246

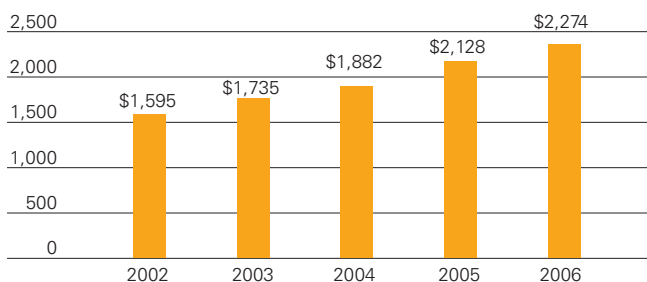
FY2006 FINANCIAL POSITION

\$ Millions, September 30, 2006

	TOTAL FUNDS			
	Trust	Federal	2006	2005
Assets	1,760	1,110	2,870	2,749
Liabilities	279	317	596	621
Net Assets	1,481	793	2,274	2,128

GROWTH IN NET ASSETS

\$ Millions, 2002-2006



Gifts to the Smithsonian

Smithsonian Business Ventures

Smithsonian Business Ventures encompasses *Smithsonian* and *Air & Space* magazines, 30 museum stores, 13 restaurants, three IMAX theaters, and the Smithsonian Gift Catalogue. Business Ventures also includes consumer product licensing, e-commerce, and commercial media enterprises that generate unrestricted income for the Institution. In 2006, total revenues from operations were \$164.4 million, representing a 4.2 percent decrease from 2005, due to a decline in museum visitation in 2006.

Major Highlights:

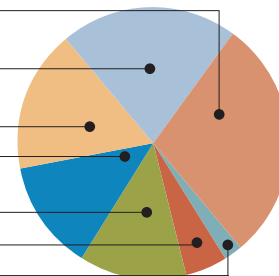
- The Institution created Smithsonian Networks, whose first venture, Smithsonian On Demand, will bring high-quality programming to millions of people worldwide via digital cable television.
- A new licensing agreement with the EF Group of Companies, an experienced domestic student tour operator, offered teacher-led tours to American students for destinations throughout the United States beginning in fall 2006.
- With July's successful opening of the Donald W. Reynolds Center, Business Ventures unveiled two retail locations and two food service facilities.
- *Smithsonian* magazine's dynamic redesign features new sections, including "Around the Mall," which groups together all Smithsonian-related content. The Magazine Group also created a stand-alone Web division to increase online advertising and better engage users.
- Smithsonian Business Ventures developed *Smithsonian Journeys* tours around one-time events to increase opportunities for experiential learning and launched its first-ever cruise catalog.
- Smithsonian Books continues to partner with HarperCollins Publishers; upcoming offerings include *Smithsonian Treasures of American History* and *After Sputnik: 50 Years of the Space Age*.

PHILANTHROPY is critical to the Smithsonian's mission. Donor gifts allow the Smithsonian to transform its museums and exhibitions, advance scientific research, ignite young minds through education and outreach, and fund innovation. Philanthropic support has never been more important to the Smithsonian, and we are most appreciative of our generous contributors.

PURPOSE OF FUNDS RAISED

Fiscal Year 2006

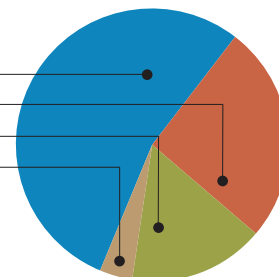
Construction	\$ 40.4M	29%
Exhibitions, Education & Public Programs	28.3M	21%
Museums & Research Centers, Unrestricted	23.2M	17%
Endowment	18.3M	13%
Smithsonian-wide, Unrestricted	17.7M	13%
Research	6.8M	5%
Acquisitions & Collections	2.4M	2%
Total	\$137.1M	100%



FUNDS RAISED BY SOURCE

Fiscal Year 2006

Individuals	\$ 73.6M	54%
Corporations	36.3M	26%
Foundations	22.3M	16%
Other	4.9M	4%
Total	\$ 137.1M	100%



Leadership Gifts

PRIVATE SUPPORT
STRENGTHENS
THE SMITHSONIAN

THE INSTITUTION is deeply grateful for the generous new gifts and pledges of \$1 million or more made in 2006 by the valued donors recognized in these pages. Their thoughtful and wide-ranging support has been essential in advancing Smithsonian initiatives in all fields.

American International Group, Inc. (AIG)

AIG is a proud supporter of the National Air and Space Museum's Steven F. Udvar-Hazy Center in Chantilly, Virginia. The \$1 million gift made by the aviation insurance underwriter is designated for the Commercial Aviation Exhibition Station, which

describes the history of air travel from its earliest use by the U.S. Post Office to the commercial airlines of the present day.



Bank of America

With a \$1 million contribution from the Bank of America, the National Museum of African American History and Culture will advance its mission to tell the African American story in all its dimensions, from slavery and civil rights to music and art. Bank of America continues its commitment to Smithsonian exhibitions and education with this leadership gift to the Institution's newest museum. The gift will provide funding for facility planning and support *Save Our African American Treasures: A National Collections Initiative of Discovery and Preservation*, an outreach effort that will create regional partnerships and build membership programs.



The Boeing Company

The world's leading aerospace company and largest combined

manufacturer of commercial jetliners and military aircraft set a Smithsonian record with its contribution to Phase Two construction of the National Air and Space Museum's Steven F. Udvar-Hazy Center. Boeing's \$15 million gift is the largest single corporate gift ever presented to the Smithsonian. In honor of the company's dedicated support of the National Air and Space Museum, the Udvar-Hazy Center's central structure will now be known as the Boeing Aviation Hangar. Boeing is also a sponsor of the museum's *How Things Fly* exhibition at its National Mall building and has supported six other Smithsonian museums and outreach programs.

Burroughs Wellcome Fund

The Burroughs Wellcome Fund's \$1 million gift brings the National Science Resources Center closer to its goal of reaching 40 percent of the nation's elementary and middle school students by the year 2010. The gift funds a 10-year initiative to improve K-12 science education in every school district in North Carolina. The National Science Resources Center is an organization of the Smithsonian and the National Academies. It provides leadership development for school districts, professional development for teachers, research-based science instructional materials for grades K-8, and internships for high school and college students.





Hacker and Kitty Caldwell

Private gifts helped make possible the magnificent restoration of the Donald W. Reynolds Center. L. Hardwick "Hacker" Caldwell III, a Smithsonian American Art Museum Commissioner and incoming Chair of the Smithsonian National Board in

2007, and his wife, Katharine, known as "Kitty," made a \$1 million contribution to the Smithsonian American Art Museum's capital campaign. A gallery named in honor of the couple recognizes their generosity and commitment to supporting American art.

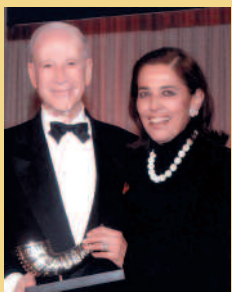
Martha Parks Forrest

Through her estate, Martha Parks Forrest bequeathed more than \$2 million to the Smithsonian. Mrs. Forrest had given family heirlooms to the collections of the National Museum of American History in the 1980s. She continued her generous support of the Smithsonian with the remembrance in her will.



Patricia and Phillip Frost

In 1986, Patricia and Phillip Frost contributed their American abstract art collection to the Smithsonian American Art Museum and subsequently established an endowment to support the museum's fellowship program and the study of American art and crafts. Twenty years later, their generosity and leadership continue with Mrs. Frost serving as Chair of the Smithsonian National Board and Dr. Frost serving as



a member of the Smithsonian Board of Regents. This year, Dr. and Mrs. Frost have made a \$1 million pledge to Cooper-Hewitt, National Design Museum in New York City.

The Glenstone Foundation, Mitchell P. Rales, Founder

The Glenstone Foundation and its founder, Mitchell P. Rales, honored current Smithsonian Under Secretary for Art and former Hirshhorn Museum and Sculpture Garden Director Ned Rifkin with a gift of more than \$1.5 million that enabled the muse-



um to purchase four early works by artist John Baldessari. The artworks are the first by Baldessari to enter the Hirshhorn's collection. The pieces selected are from Baldessari's early period, during which he became a primary force in establishing conceptual art. The gift continues the foundation's and Mr. Rales' generous support of the Hirshhorn and the Smithsonian.

Goldman, Sachs & Co.

Goldman, Sachs & Co.'s gift of \$1 million to the Star-Spangled Banner campaign furthers the National Museum of American History's efforts to preserve and share tangible legacies of the United States. The museum's planned renovation will feature new exhibitions, education and outreach programming, and the return of the conserved Star-Spangled Banner to the American public. Goldman, Sachs & Co. has been an active participant in the Smithsonian



Corporate Membership Program since 1997 and a generous supporter of past projects at the Smithsonian American Art Museum and the National Museum of the American Indian.

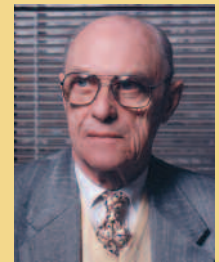
James E. Gysin

In his will, James E. Gysin named the Smithsonian as the sole beneficiary of his estate. A first-generation American, Mr. Gysin was an engineer, a successful inventor, and an avid amateur pilot. Upon his death, the Smithsonian received a gift of more than \$2.75 million. Mr. Gysin's bequest becomes part of the Smithsonian's endowment, which supports acquisitions, programs, research, and more.



Grant W. Howell

The Smithsonian Institution is the recipient of more than \$1.4 million from the estate of Grant W. Howell, a Michigan journalist and editor with a long and distinguished career. Mr. Howell directed that his generous legacy to the Smithsonian be designated for support of biological and environmental research.



Conrad N. Hilton Foundation

A gift of \$1 million from the Conrad N. Hilton Foundation to the National Air and Space Museum's Steven F. Udvar-Hazy Center furthers Phase Two construction. Previously, the foundation contributed \$2 million to Phase One construction. Phase Two construction plans include a new Restoration Hangar with visitor overlooks, archives, and state-of-the-art collection storage facilities. This year, the Udvar-Hazy Center welcomed 1 million visitors, including thousands of school children who participated in its educational programs.



Previously, the foundation contributed \$2 million to Phase One construction. Phase Two construction plans include

The History Channel

To stand in the presence of the Star-Spangled Banner, the very flag that flew over the battlements of Fort McHenry, is to experience history in an intimate and unforgettable way. The History Channel has supported memorable experiences at the Smithsonian in the past and now contributes \$1 million in cash and in-kind support to the National Museum of American History's Star-Spangled Banner campaign. Its help with videos, announcements, and online messages will greatly aid the museum's sharing of the flag and its story with millions.



The W.M. Keck Foundation

A \$1.4 million grant from The W.M. Keck Foundation to the Smithsonian Astrophysical Observatory supports a research program on galaxy assembly in the early universe. The program will compare theoretical models

of how galaxies form with observations made at Smithsonian Astrophysical Observatory facilities. The grant creates three fellowships named for the foundation and provides advanced computing capabilities for the project. The research made possible by the foundation is expected to contribute significantly to our understanding of how the universe formed.

Herb Kelleher

The Joan and Herb Kelleher Charitable Foundation's \$1 million gift to Phase Two construction at the Steven F. Udvar-Hazy Center honors Herb Kelleher, co-founder of Southwest Airlines. The center's Information-Tours Desk is named in honor of the foundation and Mr. Kelleher, a current member of the National Air and Space Museum's Board. Mr. and Mrs. Kelleher contributed generously to the first phase of the Udvar-Hazy Center's construction and have been Smithsonian Contributing Members since 1988.





David H. Koch

A \$15 million leadership gift from David H. Koch advances a planned exhibition at the National Museum of Natural History, *What Does it Mean to be Human?* Scheduled to open in November 2009, the David H. Koch Hall of Human Origins

will host the exhibition exploring the origin of human beings. Mr. Koch has long been interested in the earliest history of the human species. He has visited important sites in the field and supported related research and educational programs. Mr. Koch, a former member of the James Smithson Society, is executive vice president of Koch Industries, Inc.

John and Adrienne Mars

John and Adrienne Mars once again demonstrated their deep commitment to the Smithsonian's future with a \$3 million leadership gift to the new Elephant Trails project at the National Zoological Park. Elephant Trails, the next step in the Zoo's revitalization, will expand and transform the Washington, D.C., home of the Zoo's elephant herd; build an elephant research facility in Front Royal, Virginia; undertake a



global elephant conservation program; and expand education and outreach programs. Mrs. Mars is a current member of the National Zoo's Advisory Board and has served on the board of the National Air and Space Museum and the Smithsonian National

Board. Mr. and Mrs. Mars have in past years generously supported the National Air and Space Museum, the National Zoo, and other Smithsonian museums, research centers, and programs.

Susan and Furman Moseley

Smithsonian National Board alumna Susan Moseley and her husband, Furman, supported the Donald W. Reynolds Center for American Art and Portraiture with a gift honoring her western heritage. Two Smithsonian American Art Museum galleries in the Reynolds Center that feature art of the American West have been named the Susan Reed Moseley Galleries.



Bernard and Barbro Osher

The Smithsonian American Art Museum has recognized Bernard Osher's dedicated service as a former museum Commissioner and the generous \$2 million gift he and his wife, Barbro, made this year to the Donald W. Reynolds Center for American Art and Portraiture by naming one of its galleries in the couple's honor. The Barbro and Bernard Osher Gallery features special exhibitions and exemplifies the Oshers' commitment to supporting the arts and culture. Previous gifts made by the couple helped tour the museum's exhibition *George Catlin and His Indian Gallery* and the National Museum of Natural History exhibition *Vikings: The North Atlantic Saga*.

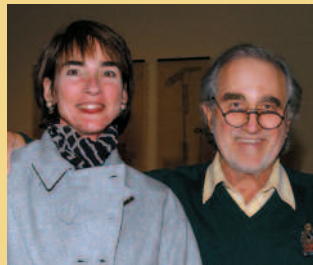


David Rockefeller

With his gift of \$1 million, David Rockefeller, a longtime generous friend to the Smithsonian, supports two endowment funds of the National Museum of the American Indian. Half of the gift is directed to the George Gustav Heye Center Endowment, which provides vital educational funding to the museum's New York location. The other half helps establish the W. Richard West, Jr. Endowment for Traveling Exhibitions, which shares museum exhibitions and programs with Americans wherever they live and is named in honor of the museum's founding director. Mr. Rockefeller, a supporter of the museum since its beginning, has served on its Founder's Council and Board of Trustees.

Samuel G. Rose and Julie Walters

A \$1 million gift from Samuel G. Rose and Julie Walters to the Smithsonian American Art Museum supported the renovation and opening of the Donald W. Reynolds Center for American Art and Portraiture and established an endowment named for the donors that helps provide a secure financial future for the museum’s programs. A second-floor gallery in the museum is named the Julie Walters and Sam Rose Gallery in the couple’s honor. Mr. Rose has served on the museum’s Commission since 2001. He and his wife, avid collectors of American art, have donated to the museum eight artworks by significant American artists.



Albert and Shirley Small

A gift of \$1 million from Albert and Shirley Small funds the creation of the National Museum of American History’s Albert Small Document Gallery, where visitors will see documents relating to major events and themes in American history. Mr. Small, a noted collector of historical documents, has loaned priceless artifacts to the Smithsonian in the past, including a rare first printing of the Declaration of Independence.



The Tiffany & Co. Foundation

A \$1.1 million gift from The Tiffany & Co. Foundation to the National Museum of Natural History established an endowment for the acquisition of new precious stones to augment the museum’s National Gem Collection. Gems purchased through the endowment will be known as The Tiffany & Co. Foundation Collection. A portion of the gift also creates an exhibition case in the National Gem Collection Gallery. Tiffany & Co. and its foundation have been supporters of the Smithsonian through gifts made to five of its museums and research centers since 1983.

Alfred P. Sloan Foundation

A grant of more than \$1.5 million continues the Alfred P. Sloan Foundation’s support of an international initiative to advance rapid, accurate identification of animal and plant species using minimal

DNA sequences. The Smithsonian’s National Museum of Natural History hosts the Consortium for the Barcode of Life, the organizing body for the initiative. The “barcodes” for plant and animal species developed through the initiative could revolutionize biological collections and create an invaluable public resource. The worldwide alliance of organizations undertaking the initiative includes zoos, botanical gardens, research organizations, government agencies, and other museums.



Donors to the Smithsonian

THANKING
OUR
SUPPORTERS

THE SMITHSONIAN GRATEFULLY RECOGNIZES those donors who made gifts or pledges during the fiscal year ending September 30, 2006.

\$1,000,000 or more

We especially value the philanthropic leadership shown by the Institution's most generous supporters.

Anonymous
AETN/The History Channel*
Airbus
American International Group, Inc. (AIG)
Bank of America
Kenneth E. Behring Family
The Boeing Company
Burroughs Wellcome Fund
Hacker and Kitty Caldwell
Patricia and Phillip Frost
Fujifilm*
General Motors Corporation
The Glenstone Foundation, Mitchell P. Rales, Founder
Goldman, Sachs & Co.
Conrad N. Hilton Foundation
The W.M. Keck Foundation
Herb Kelleher

David H. Koch
Robert and Arlene Kogod
Dorothy G. Lemelson
The J. Willard and Alice S. Marriott Foundation
Lockheed Martin
John and Adrienne Mars‡
The JSM Charitable Trust, James S. McDonnell III, John F. McDonnell
The Claude Moore Charitable Foundation
Susan and Furman Moseley
Bernard and Barbro Osher
Polo Ralph Lauren Corporation
The Rasmuson Foundation
Reve Foundation
Donald W. Reynolds Foundation
David Rockefeller
Samuel G. Rose and Julie Walters
Alfred P. Sloan Foundation
Albert and Shirley Small
Target Corporation
The Tiffany & Co. Foundation
The Upton Trust

Mr. and Mrs. Curtis F. Bradbury, Jr.
Rose J. Bratton
Bristol-Myers Squibb Company
Larry and Shelly Brown
Mrs. Melva Bucksbaum (The Martin Bucksbaum Family Foundation)
Caixa Geral de Depositos
The E. Rhodes & Leona B. Carpenter Foundation
Cessna Aircraft Company
Mr. and Mrs. Peter Claussen
The Ryna and Melvin Cohen Family Foundation
Mr. Michael J. Collins (James M. Collins Foundation)
Mr. Ravenel Boykin Curry, Jr.
Jim and Janet Dicke*
Miranda and Robert Donnelley (The Donnelley Foundation)
ECOPETROL S.A.
Mr. and Mrs. Joel S. Ehrenkranz (Ehrenkranz Family Foundation)
The Elle Group
Mr. Robert Ellsworth
Embraer
County of Fairfax
FedEx Corporation
Nancy B. and Hart Fessenden
Fidelity Foundation
Field Museum of Natural History, Ms. Laura M. Sadler
Barbara G. Fleischman
Freightliner Trucks*
Shelby and Frederick Gans
Mr. and Mrs. Edward O. Gaylord (Gaylord Charitable Fund)
GE Aircraft Engines
The Getty Foundation
Ms. Alice Gottesman (The Gottesman Fund)
Hakuta Family
Mr. Christie G. Harris
Mr. and Mrs. Brian J. Heidtke (The Heidtke Foundation, Inc.)
Mrs. Richard Helms
Herman Miller, Inc.*
Mr. and Mrs. J. Tomilson Hill (The Hill Family Foundation, Inc.)
Frank and Lisina Hoch‡
Mr. William L. Hopkins and Mr. Richard B. Anderson
Idaho Power Company
International Community Foundation
ITKIB
Miss Rajinder Kaur Keith
Koç Holding A.S.
Mr. William I. Koch
Constance and Harvey Krueger
Landmark Communications Foundation

\$500,000 or more

Anonymous
55th Presidential Inaugural Committee
The Morris and Gwendolyn Cafritz Foundation
Mr. and Mrs. Michael A. Callen
Dr. and Mrs. David A. Cofrin
The Daniels Fund
Mr. and Mrs. James Dicke
ExxonMobil*
The Ford Foundation
Ford Motor Company Fund
Friends of the National Zoo
Norma Lee and Morton FUNGER
Jamestown 2007
The Korea Foundation
Thelma and Melvin Lenkin
F.H. Levinson Fund at Peninsula Community Foundation (Frank Levinson)‡

Barbara and Morton Mandel
Richard and Jane Manogian Foundation
Nancy A. Marks
The Mohegan Tribe of Indians of Connecticut
Shell Gabon
Robert H. and Clarice Smith
Smithsonian Women's Committee
Terra Foundation for American Art
Ms. Esme Usdan and Mr. James Snyder
Mr. and Mrs. Norman C. Willcox
Mr. and Mrs. Daniel W. Yohannes‡

\$100,000 or more

Anonymous
AAA
AARP
Accenture*
The Aflac Foundation, Inc.
Agua Caliente Band of Cahuilla Indians
Agusta
Altman Foundation
American Public Transportation Association*
American Road & Transportation Builders Association
American Zoo & Aquarium Association (AZA)
Archer Daniels Midland Company
The Arts Council of Northern Ireland
Association of American Railroads
Lily Auchincloss Foundation, Inc.
Banco Espirito Santo
Bell Helicopter
Mrs. Richard H. Benson
Max N. and Heidi L. Berry
Helen and Peter Bing
Barbara and James Block
Bombardier

Aimee and Robert Lehrman
 Jean and Richard Levitt
 The Henry Luce Foundation
 The Lunder Foundation
 Margery and Edgar Masinter
 Masterfoods USA*
 The Merck Company Foundation
 Merck Institute for Science Education
 MetLife Foundation
 Michigan State University
 Ministries of Heritage and Culture, Tourism, Information, and Foreign Affairs of Oman
 Mr. Steven T. Mnuchin (The Steven and Heather Mnuchin Foundation)
 Morris Animal Foundation
 Lester S. and Enid W. Morse
 National Asphalt Pavement Association
 National Business Aviation Association
 New York Mint Ltd.
 Mr. and Mrs. Long Nguyen (Pragmatics, Inc.)
 NIKKEI*
 Northrop Grumman Corporation
 Occidental Petroleum Corporation
 Mrs. Carroll O'Connor (Carroll and Nancy O'Connor Foundation)
 Mary and John Pappajohn
 Pitney Bowes Inc.*
 Portuguese Ministry of Culture
 David and Cheryl Purvis‡
 Raytheon Company
 James Renwick Alliance
 Mr. and Mrs. Allan J. Riley (Allan and Reda R. Riley Foundation)
 Ringling Bros. and Barnum & Bailey
 Mr. Alan Ritchey (Alan Ritchey Inc.)
 Mr. Raymond A. Ritchey
 Rolex
 Rolls-Royce North America Inc.
 Abigail Rose and Michael J. Blum
 Susan and Elihu Rose
 Mr. James A. Rosenthal
 Running Strong for American Indian Youth®
 Roger and Victoria Sant
 The Schlinger Foundation
 Seneca Nation of Indians
 Shirley Phillips Sichel
 Mr. Theodore J. Slavin
 Sandra and Lawrence Small
 Smith Barney
 Gloria and Franchon Smithson
 Guenther and Siewchin Yong Sommer
 Alan and Terri Spoon
 The Starr Foundation
 Stockman Family Foundation
 Mr. and Mrs. Thomas H. Stoner
 Ms. Patricia Q. Stonesifer and Mr. Michael E. Kinsley (The Stonesifer/Kinsley Family Fund)
 Sultan Qaboos Cultural Center
 A. Alfred Taubman Restated Revocable Trust (A. Alfred Taubman)‡
 Mr. John L. Tishman
 Turkish Cultural Foundation
 Mr. and Mrs. Steven F. Udvar-Hazy
 Richard O. Ullman Family Foundation
 UPS
 United States Postal Service

Jean and Davis H. von Wittenburg
 Mallory and Diana Walker
 The Walt Disney Company
 White House Historical Association
 Sue and John Wieland
 Mr. Mike Wilkins and Ms. Sheila Duignan
 Mary Anna Wills
 Yale University
 Mr. Henri Zimand

\$50,000 or more

Anonymous
 ABS CBN International
 Jan and Warren Adelson (Adelson Galleries, Inc.)
 ADVO, Inc.*
 Mr. and Mrs. Lee S. Ainslie III
 Province of Alberta
 Paul G. Allen
 American Academy of Family Physicians
 American Airlines
 API (American Petroleum Institute)
 American Society of Agronomy, Inc.
 Mary W. and Rhodes F. Arnold
 Mr. Richard C. Ashley
 AT&T, Inc.
 Austrian Tourist Office
 John and Delores Beck (Beck Family Foundation)
 Joan and Bert Berkley
 Mr. Judah Best
 F. Otis Booth Jr.
 Booz Allen Hamilton Inc.
 Dr. and Mrs. Douglas D. Bradley
 Chapman Family Fund
 The Chubb Corporation
 Conservation International
 Ron and Barbara Cordover (Cordover Family Foundation)
 Ann and Tom Cousins (The C.F. Foundations)‡
 Guido Craveri
 Crystal Cruises
 Mr. and Mrs. Maurice J. Cunniffe
 CVS/pharmacy*
 Mr. David L. Davies and Mr. John D. Weeden
 Valerie and Charles Diker
 Lee E. and Judy A. Dirks
 William H. Donner Foundation
 Durham Western Heritage Museum
 Eastern Band of Cherokee Indians
 Eastman Kodak Company
 Mr. Barney A. Ebsworth
 Mr. and Mrs. Michael D. Eisner (The Eisner Foundation)
 Electric Power Research Institute
 Element Labs, Inc.*
 Mr. George W. Elliott
 John and Margot Ernst
 Mr. and Mrs. Thomas M. Evans, Jr.
 Feinberg Foundation
 Roger S. Firestone Foundation
 Mr. and Mrs. Joseph G. Fogg III
 Hope L. and John L. Furth
 Mr. and Mrs. Carl S. Gewirz
 Global Imagination
 Mr. Ray A. Graham III
 Mr. and Mrs. Hugh Half, Jr.
 Mr. Robert F. Hemphill, Jr. and Ms. Linda Powers
 Mr. C. Wolcott Henry (The Henry Foundation)

Ms. Jane Henson
 Ruth S. Holmberg (The Sulzberger Foundation, Inc.)‡
 House and Garden
 Ms. Audrey Irmis (The Audrey & Sydney Irmis Charitable Foundation)
 The Island Fund in the New York Community Trust
 Mr. and Mrs. Andre Jordan
 Mr. Isaac Kaye (Aimwell Foundation)
 Kimpton Hotels & Restaurants*
 Nancy and Rich Kinder, Kinder Foundation
 Gale and Steve Kohlhagen
 Mr. and Mrs. Richard I. Kuehl
 Ms. Nanette L. Laitman (William & Mildred Lasdon Foundation)
 Lancome*
 Lehman Brothers Holdings Inc.
 Aaron and Barbara Levine
 Mr. W. Curtis Livingston
 The John C. Lopez Family
 Richard Lounsbery Foundation
 The Lucelia Foundation, Inc.
 Lucent Technologies, Inc.
 Linda and Harry Macklowe
 Elizabeth and Whitney MacMillan Maharam*
 Marpat Foundation, Inc.
 Pierre and Maria-Gaetana Matisse Foundation
 Ms. Marcia V. Mayo (The Mayo Charitable Foundation)
 The Honorable Marilyn Logsdon Mennello and Michael A. Mennello
 Merrill Lynch & Co., Inc.
 METRO*
 Ms. Elizabeth E. Meyer (The Island Fund)
 Janet and Jeffery Meyer
 Mr. and Mrs. Augustus C. Miller
 Ambrose Monell Foundation
 The Gordon E. and Betty I. Moore Foundation
 National Academy of Sciences
 National Geographic Society
 The Nature Conservancy
 Royal Norwegian Embassy
 Numismatic Conservation Services, LLC
 Numismatic Guaranty Corporation
 Omega Watch
 Panda Express*
 PepsiCo, Inc.
 Kay and Dave Phillips
 The John L. Plueger Family
 Thomas and Jamie Pumpelly
 Gouvernement du Quebec
 Mr. and Mrs. Harvey W. Rambach
 The Reed Foundation
 Reinsch Family
 Edward and Nancy Rice and The Rice Family Foundation
 Craig Robins
 Rockefeller Philanthropy Advisors
 Rockwell Collins
 Tom and Bonnie Rosse (Rosse Family Charitable Foundation, Inc.)
 Dr. and Mrs. John Rowe
 Ruder Finn Inc.*
 Santa Fe Art Foundation
 Lloyd G. and Betty A. Schermer
 The Selz Foundation
 Southern Company
 Species 2000
 Starbucks Coffee Company*

The Stuntz Family
 Mr. and Mrs. Kelso F. Sutton (Kelso F. and Joanna L. Sutton Fund)‡
 Thaw Charitable Trust
 Charles and Geneva Thornton
 Tisch Foundation, Inc.
 Tourism Ireland*
 Toyota*
 Trellis Fund
 Embassy of Turkey
 University of California, San Diego
 USA Weekend Magazine*
 Prehlad S. Vachher, M.D.
 WAMU 88.5 FM, American University Radio*
 Audrey and Ken Weil
 Whole Foods Market*
 Ms. Ginny L. Williams
 Wyeth Foundation for American Art

\$10,000 or more

Anonymous
 ABC Radio*
 Anne and Ronald Abramson (Abramson Family Foundation, Inc.)
 Academy of Motion Picture Arts and Sciences
 David and Beryl Adcock*
 The Aga Khan Trust for Culture
 Alaska State Council on the Arts
 Ralph and Birdie Albers
 Mr. and Mrs. Clifford J. Alexander
 All Nippon Airways Co., Ltd.*
 Kathleen B. Allaire (2005 Allaire Family Charitable Trust)
 Claudia R. Allen and Willis M. Allen, Jr.
 Allstate Insurance Companies
 The Herb Alpert Foundation
 Altria Group, Inc.
 The American Association for Thoracic Surgery
 American Association of Airport Executives
 American Association of Neurological Surgeons
 American Bankers Insurance Company of Florida
 American Bankruptcy Institute
 American Hospital Association
 American Modern Insurance Group, Inc.
 American Pharmacists Association Foundation
 Amylin Pharmaceuticals
 Ms. Penny Andrews
 Mr. Philip F. Anschutz (The Anschutz Foundation)‡
 Antronnix, Inc.*
 AnviCom, Inc.
 Charles F. Appel and Lillian F. Appel Charitable Trust
 Appian Corporation
 Aramco Services Company
 Arianespace Inc.
 Austrian Airlines*
 Phillip and Ruth Backup
 Bailey Lauermark Marketing Communications*
 Eugene C. and Phyllis T. Ballinger
 William C. and Nellie N. Baker
 Ball Aerospace & Technologies Corp.
 Ms. Elizabeth Ballantine and Mr. Paul Leavitt
 Banco de Investimento Global
 Mr. and Mrs. Albert H. Barclay

Mr. and Mrs. Craig R. Barrett
 BASF Corporation
 Yves Behar/fuseproject
 Benetton Services Corporation
 Catherine and Ralph Benkaim
 Mr. Harvey Bennett
 (Matthew Bennett, Inc.)
 Jane and Raphael
 Bernstein/Parnassus Foundation
 Biotechnology Industry Organization
 Ms. Ann Bissell
 Mr. David C. Blackburn
 Ms. Mary C. Blake
 The Blakemore Foundation
 Bloomberg
 Mark Jon Bluth
 Mr. and Mrs. John Boochever
 Bradley Stephens Interiors*
 Alice Huchting Bragg
 The Brinson Foundation
 Bristol Bay Native Corporation
 Mr. and Mrs. Richard A. Brodie
 The Brown Foundation, Inc.
 of Houston
 Mrs. James J. Brown
 Mr. John H. Bryan, Jr.
 Mr. Kevin Buchi
 Mr. and Mrs. Gerald E. Buck
 Dr. Peter Buck
 Burke Family Foundation
 Peggy and Ralph Burnet
 Uschi and Bill Butler
 CACI International Inc
 Ms. Peggy Cooper Cafritz
 California Waste Solutions
 Calista Corporation
 Mr. and Mrs. Richard O. Campbell
 Cantel Medical Corp
 CAP Charitable Foundation (USA)
 Capital One
 Capitol Services, Inc.
 Constance R. Caplan
 Susan and Jim Cargill II
 Mr. Byron R. Carter
 Mr. Vincent R. Castro
 (The CDM Group, Inc.)
 Giuseppe and Mercedes Cecchi
 The Honorable Paul L. Cejas and
 Mrs. Cejas (The Cejas Family
 Foundation, Inc.)‡
 The Central National-Gottesman
 Foundation
 Chaney Foundation
 The Charles Schwab Corporation
 Chesapeake Bay Trust
 Chesapeake Research
 Consortium, Inc.
 Choice Hotels International, Inc.
 Mr. and Mrs. Percy Chubb III
 The CIRI Foundation
 Citigroup Foundation
 Clearchannel Radio*
 Clyde's Restaurant Group*
 The Coby Foundation, Ltd., New York
 The Coca-Cola Company*
 Fern and Harry D. Cohen
 Joseph & Barbara Cohen
 Foundation Inc.
 Mr. Lawrence A. Cohen
 Naomi & Nehemiah Cohen
 Foundation
 Dollie A. Cole*‡
 The College Board
 Mr. and Mrs. Daniel F. Collins
 The Colony Group

Mr. Gifford Combs
 Comcast Cable Communications, Inc.*
 ConocoPhillips
 Conservation, Food and Health
 Foundation, Inc.
 Ms. Paula Cooper
 Mrs. Esther L. Coopersmith
 Cornell University
 Corning Incorporated Foundation
 Corporate Office Properties Trust
 Covington & Burling
 The Cowles Charitable Trust
 Crate and Barrel*
 Mr. Paul W. Critchlow
 CTIA - The Wireless Association
 Cuatrecasas Family Foundation
 Mr. Jeffrey P. Cunard
 Mr. Philip R. Currie
 Mr. and Mrs. John R. Curtis
 Dacra Development Corporation
 Dallas Foundation
 Julia and Frank Daniels, Jr.‡
 Peggy and Richard M. Danziger
 Darden Restaurants, Inc. Foundation
 Dr. Edward and Joanne Dauer
 Decade Lead Annuity Trust
 Mr. and Mrs. A.C. Deichmiller
 Ms. Dorothy J. Del Bueno
 Deloitte Consulting
 Deutsche Bank Americas Foundation
 Development Alternatives, Inc.
 The Dibner Fund
 Kathryn and George A. Didden III
 Diker Management LLC
 Disney Wildlife Conservation Fund
 Donald J. and Helen D. Douglass
 Downtown Business Improvement
 District Corporation (Washington, D.C.)
 Doyon, Limited
 The Max and Victoria Dreyfus
 Foundation Inc.
 DSM N.V.*
 Ms. Lois Sherr Dubin
 (Theodore Dubin Foundation)
 Mr. W. Leslie Duffy
 Earthwatch Institute
 Mr. and Mrs. Farhad F Ebrahimi
 (Ebrahimi Family Foundation)
 Edison Electric Institute
 Dean S. Edmonds Foundation
 EDP Sciences
 Electro Rent Corporation*
 Ellen Sideri Partnership, Inc.
 June Rayzor Elliott
 Emcor Facilities Services, Inc.
 Enterprise Community Partners
 Etant donnés: The French-American
 Fund for Contemporary Art
 Ethical Culture Fieldston School
 EU Services*
 Eurocopter Communications
 Directorate
 Fannie Mae
 Fannie Mae Foundation
 Federal Home Loan Mortgage
 Corporation
 Mr. and Mrs. Michael Feng
 Alan and Lois Fern
 Mr. and Mrs. Emilio A. Fernandez
 Fisher BioServices
 Mr. and Mrs. William Fisher
 The Ella Fitzgerald Charitable
 Foundation
 Florida House

Dr. Ella M. Foshay and
 Mr. Michael B. Rothfeld
 Frank Crystal & Company
 The Freedom Forum/Newseum
 Mr. Bradford M. Freeman
 Fried, Frank, Harris, Shriver &
 Jacobson Fund, Inc.
 Mr. and Mrs. Robert J. Friedlander
 Friends of Bezalel Academy of Arts
 and Design, Inc.
 Mr. Cary J. Frieze
 The Dorothy Cate & Thomas F. Frist
 Foundation
 Mr. Melvin E. Fryer
 Ms. Virginia Fulton (The Virginia Fulton
 Charitable Gift Fund)
 Fundacion Smithsonian de Panama
 Mr. Glenn R. Furfman
 Furthermore, a program of the J.M.
 Kaplan Fund
 Gail Ross Literary Agency
 Gamache, Ltd.
 The Bill and Melinda Gates Foundation
 Victoria and Buzzy Geduld
 GEICO Direct
 Ms. Lucy Gettman
 Mrs. Lile R. Gibbons
 Gibson, Dunn & Crutcher LLP
 Girardi and Keese
 Glacéau
 Global Events Partners, Inc.
 Mr. Robert B. Goergen
 William T. Golden
 Mr. Larry A. Goldstone
 Grand Marnier Foundation
 The Greater Des Moines Partnership
 Greater Omaha Chamber of
 Commerce
 Lisa Sharf Green and Eric A. Green
 Mr. and Mrs. Michael D. Greenbaum
 Randall Greene
 Mr. and Mrs. James Greenwald
 Mr. and Mrs. John A. Griffin (John
 and Amy Griffin Foundation)
 Mary Livingston Griggs and Mary
 Griggs Burke Foundation‡
 Gryphon Technologies, L.C.
 Guardian Realty Management, Inc.
 Agnes Gund and Daniel Shapiro
 George Gund III and Lara Lee
 The Frederic C. Hamilton Family
 Foundation (Frederic C. Hamilton)‡
 Mrs. Gloria Shaw Hamilton
 Harrah's Entertainment, Inc.
 Robert Harris and Susan Rothermund
 Harrison Maldonado Associates, Inc.
 Victor and Takako Hauge
 Mr. and Mrs. Michael R. Haverty
 (Kansas City Southern)
 Hay-Adams Hotel
 Healthways, Inc.
 Hecht's
 Drue Heinz Trust
 Cheryl Henson
 Catherine and Richard W. Herbst
 Alexandra and Paul Herzan
 Mr. and Mrs. John E. Herzog
 (Herzog Family Fund)
 Mr. and Mrs. Samuel J. Heyman
 Irene Y. Hirano
 Barron Hilton
 History of Containerization
 Foundation, Inc.
 HNTB Corporation
 Mr. and Mrs. Steven G. Hoch

Hogan & Hartson
 Home Box Office
 Ray and Valerie Hopkins
 Mr. Alan F. Horn (A. and C. Horn
 Trust)
 John Hoyda
 HSBC Bank USA, N.A.
 Mr. Ryan Nguyen Hubris
 Judy and Bob Huret
 I. Reid, Inc.
 IBM Corporation
 Institute of International Education
 The Institute of Navigation
 Inter-American Development Bank
 International Elephant Foundation
 International Music and Art
 Foundation
 The International Rhino Foundation
 Mr. Kazuharu Ishida
 Izocam San Ve Tic
 Jagiellonian University
 Mr. Edward C. Jalbert (Ned Jalbert
 Interior Design)
 Japan Airlines*
 Japan Commerce Association of
 Washington, D.C.
 Japan National Tourist Organization*
 Christian A. Johnson Endeavor
 Foundation
 Ms. Shirley Z. Johnson and
 Mr. Charles Rumph
 Mr. and Ms. William Bruce Johnson
 The Katzenberger Foundation, Inc.
 Ms. Shelley Kay
 Embassy of Kazakhstan
 The John F. Kennedy Center for
 the Performing Arts
 Frances D. Kerr
 The Hagop Kevorkian Fund
 Ann and Gilbert H. Kinney
 Mr. Fred M. Kirby II (F.M. Kirby
 Foundation)
 Jeanne and Michael Klein
 John and Susan Klein
 Michèle Gerber Klein and
 Jeffrey P. Klein
 Koniag, Inc.
 Lt. Col. and Mrs. William Karl Konze
 Korean Airlines Co., Ltd.*
 The Samuel H. Kress Foundation
 Ms. Francesca Kress
 Mr. Robert Krissel
 Mr. Mark A. Kuller
 Mr. Thomas Laco
 Mr. and Mrs. Philip Lader
 Mr. and Mrs. James J. Lally
 Land O'Lakes, Inc.
 Latham & Watkins
 Mr. and Mrs. Leonard A. Lauder
 (The Leonard and Evelyn Lauder
 Foundation)
 Cynthia Muss Lawrence
 Les and Janice Lederer
 Mrs. Francine LeFrak
 (The Samuel J. & Ethel LeFrak
 Charitable Foundation)
 Lehman Smith McLeish
 David & Sara Lieberman Family
 Fund in the Minneapolis Jewish
 Federation
 Ellen Liman (Liman Foundation)
 The Link Foundation
 Gordon F. Linke and Jocelyn B.
 Linke Foundation
 Mr. and Mrs. Robert E. Linton
 Ms. Nina Liu

Loews Corporation
Loews Foundation
Lord & Taylor (The May Department Stores Company)
Mr. and Mrs. Jon Lovelace
H. Christopher Luce and Tina Liu
Mr. and Mrs. Alan H. Lund
Peter and Paula Lunder
M2 Creative, Inc.
Macy Fund of the Federated Foundation
Mr. and Mrs. John W. Madigan (Madigan Family Foundation)†
Mrs. Jean B. Mahoney‡
Ms. Phyllis Mailman (The Mailman Foundation, Inc.)
Mr. and Mrs. Peter L. Malkin
Linda A. Mars
Martha Stewart Living
Mr. and Mrs. Frank Martucci
The Masterpool Foundation
Mr. William P. McClure
Amy S. McCombs
William and Mary McCormick Foundation
Dr. John P. McGovern (McGovern Foundation)
Mr. and Mrs. Thomas F. McLarty (McLarty Management Co.)
Mr. and Mrs. Burton J. McMurtry
Mr. Richard Meier (The Richard Meier Foundation)
Meniscus Limited
Dunlevy Milbank Foundation
Mrs. Charles A. Miller
Mr. and Mrs. Samuel C. Miller
Mr. Howard P. Milstein
Mr. Alan Mirken (Alan B. and Barbara Mirken Foundation)
Mr. Emmet V. Mittlebeeler
Mondriaan Foundation
Mr. and Mrs. Fred Montanye
Monterey Bay Sanctuary Foundation
Mr. and Mrs. Charles H. Moore
Morgan Keegan & Company (Capitol Services, Inc.)
Morgan Stanley
Movado Group
MTV Networks
Mr. Henry R. Muñoz III (Kell Muñoz Architects, Inc.)‡
Curtis & Edith Munson Foundation
NARAS
National Association of Realtors
National Association of State Fire Marshals
National Conference of State Legislatures
National Forest Foundation
National Grocers Association
National Japanese American Memorial Foundation
National Science Foundation
NBC4*
Mr. Paul Neely
Ms. Nancy B. Negley‡
NeuStar, Inc.
Mr. and Mrs. Samuel I. Newhouse, Jr. (Samuel I. Newhouse Foundation)
Newmont Mining Corporation
Mr. Ngai Nguyen
Thuy Vi Nguyen, M.D. and Ha Thanh Le, M.D.
Dr. Van-Thanh Nguyen

Northern Virginia Community Foundation
Mr. Peter Norton
O'Keefe Communications, Inc.*
Mr. and Mrs. Daniel Okrent
Omni Shoreham Hotel*
OMP, Inc.
One Washington Circle Hotel*
Oneida Tribe of Indians of Wisconsin
Operation Flying Clouds
Orange County Government
Mr. and Mrs. David M. Osnos
Otsuka America Pharmaceutical, Inc.
Mr. and Mrs. Mandell J. Ourisman‡
Mr. and Mrs. Donald E. Owen
PaceWildenstein
(Pace Gallery New York, Inc.)
Pali Capital, Inc.
Mr. and Mrs. Russell E. Palmer, Jr.
Ms. Lindsey Parker
Parsons Brinckerhoff
John R. Patterson, Jr.
Mary Ann and Carl Pearson
Mr. Paul L. Peck
Ms. Laura Peebles
PEPCO
Perry Capital, LLC
Laurie Peters-Lauthier
PetroSantander Inc.
Pharmaceutical Research and Manufacturers of America
Pilot Corporation
The Pinkerton Foundation
Robert W. Pittman
Heather and Tony Podesta
PolyVision Corporation*
Mr. and Mrs. William A. Potter
Stephen and Benita Potters
Anthony and Jeanne Pritzker Family Foundation
Profilo San. Ve Tic A.S.
Psychogenics Inc.
Putnam Investments
Mr. Danh Nhut Quach and Family
Quapaw Tribe
Quark Expeditions
Mr. and Mrs. Frank J. Quirk
Frederick L. Ranck
Mrs. A. Stanley Rand
Mrs. Lois S. Raphling (Sylvia and Alexander Hassan Family Foundation)
Allan and Lynne Reich
Repsol, S.A.
Erin and R. William Rheinschild
Bill, Hailey, and Sage Rheinschild
Frank K. Ribelin
Mr. Jim Richman
(Richman Family Foundation)
Richard H. Robb and
Rebecca E. Crown
Sara Roby Foundation
Rockefeller Group, Inc.
Mr. David Rockefeller, Jr.
Rootstein Mannequins*
The Honorable Ronald A. Rosenfeld and Mrs. Rosenfeld (Rosenfeld Family Charitable Foundation)
Rosenthal Jaguar Land Rover of Tysons/Chantilly
The James Rosenthal Family Foundation Inc.
Mr. and Mrs. Robert M. Rosenthal
Dr. Wayne Rosing
Arthur Ross Foundation

Mr. Matthew V. Roswell
Mr. Paul N. Roth (Schulte Roth and Zabel, LLP)
Mr. Arthur J. Rothkopf (The Rothkopf Charitable Fund)
Mr. and Ms. David M. Rubenstein
May and Samuel Rudin Family Foundation, Inc.
Ruesch Family Foundation
Owen F. Ruggles
Nancy and Clive Runnells‡
Mr. O. Frank Rushing, Jr. and Ms. Justine Simoni
Mrs. Arthur M. Sackler (AMS Foundation for the Arts, Sciences and Humanities)‡
John and Joy Safer
Charles E. Sampson Memorial Fund
Mr. and Mrs. B. Francis Saul II
Save the Tiger Fund, National Fish & Wildlife Foundation
Diane H. Schafer and Jeffrey A. Stein (The Lucy Foundation)
Dr. and Mrs. Rolf G. Scherman
Mr. and Mrs. Richard T. Schlosberg III
Mr. and Mrs. W.P. Schmoie
David Schwartz Foundation, Inc.
Suzanne and Walter Scott Foundation
Scottish Book Trust
Sealaska Corporation
The Honorable and Mrs. Ivan Selin‡
Seminole Tribe of Florida
Seneca Gaming Corporation
Shirley and Ralph Shapiro
Mr. Frederic A. Sharf (Jean S. & Frederic A. Sharf Fund)
Mr. and Mrs. Paul Shatz
Shell Exploration and Production Company
Shell Foundation
Mr. and Mrs. James Shinn (Princeton Brooke Foundation, Inc.)
Jon A. and Mary Shirley
Shoniya Charitable Fund of the Fleet Charitable Gift Fund
David & Lyn Silfen Foundation (David Silfen)‡
The Simons Foundation
Sirindhorn Anthropology Center
Skadden, Arps, Slate, Meagher & Flom LLP
The Gertrude E. Skelly Charitable Foundation
Ms. Jeanne L. Slobod
The Slovin Foundation
Mrs. Jane A. Smalley and Family
Mr. Richard M. Smith (Newsweek, Inc.)
Mr. and Mrs. Robert N. Snyder (Cambridge Information Group)
Mr. Richard H. Solomon (Pace Primitive)
Southwest Airlines*
Spanierman Gallery, LLC
The Speyer Family Foundation Inc.
Sprint Corporation
Mr. Theodore R. Stanley (Theodore & Vada Stanley Foundation)
Marianne and Roger Staubach
Mr. Stanford C. Stoddard (Stoddard Family Foundation, Inc.)
Ms. Mara Strock
Alan & Katherine Strock Fund
Ms. Marion Boulton Stroud
Subway*
Sandra L. Sully

Mr. David M. Sundman and Mr. Donald J. Sundman
Sunoco, Inc.
Swiss Re American Corporation
Mrs. Rachel A. Syslo
Mr. and Mrs. Jackson P. Tai‡
Taipei Economic & Cultural Rep Office in the US*
Ralph Edward Tamper
Ruth McCormick Tankersley Charitable Trust
The Taubman Charitable Foundation
Mr. and Mrs. James C. Taylor
Telemundo/Channel 64*
Riley K. Temple
George Terasaki
The Tewaaraton Award Foundation
Mr. Henry L. Thaggert III
Dr. and Mrs. F. Christian Thompson
Mr. Richard E. Thompson
Thornburg Charitable Foundation
Time Inc.
Time Warner Inc.
Tishman Speyer
The Titan Corporation
Joseph and Toshiko Tompkins
The Towbin Fund
TriWest Healthcare Alliance
Trust for Mutual Understanding
Turkish-American Chamber of Commerce & Industry
Ann and Marshall Turner
United States Department of Agriculture
Universal Music Group, Inc.
University of Pennsylvania
Univision Communications, Inc. (Univision Management Co.)
US Family Health Plan
U.S.-Japan Business Council, Inc.
USMMA Alumni Foundation, Inc.
Verizon Foundation (Verizon Communications, Inc.)
Verizon Wireless
John Vernet
Viet Heritage Society, Inc.
Department of Cultural Heritage-Vietnam
Vietnamese Medical Society of N.E. America
Volkswagen of America, Inc.
Sue & Edgar Wachenheim Foundation
Waddell & Reed Companies
Mr. Douglas C. Walker
Robert T. Wall Family
Warner Brothers Television, Inc.
Warner Chilcott
Washington 2006 World Philatelic Exhibition*
Washington Antiques Show
Washington DC Dermatological Society
Washington Life Magazine*
Washington Mutual Bank
The Washington Mystics
Washington Parent*
Washington Philatelic Exhibition Inc.
The Washington Post Company
Mrs. Ruth L. Webb
Mrs. John L. Weinberg
The Stephen & Suzanne Weiss Foundation, Inc.
Wells Fargo Bank, N.A.
Wesbild, Inc.

Whitmore Print & Imaging*
 Wico Metal Products
 Mr. John Wieland, Jr.
 Wien Products*
 Mr. C. Howard Wilkins, Jr. (C. Howard Wilkins, Jr. Revocable Trust)
 The C.K. Williams Foundation
 Mr. and Mrs. Wesley S. Williams, Jr.
 Mr. John Wilmerding
 Mr. Eli Wilner (Eli Wilner & Company, Inc.)
 Wilson & Geo. Meyer & Company
 Edgar Wilson Charitable Trust
 Wolfensohn Family Foundation
 Sue Ann Wolff
 Gerald L. Wood
 Yamato Logistics Co., Ltd.*
 Yellow Book*
 Mr. Fred M. Young, Jr.
 The Zankel Fund

\$5,000 or more

Anonymous
 ACBL Charity Foundation Corporation
 The Acorn Foundation
 Alaska Native Arts Foundation
 AMB Foundation
 Americans for the Arts
 Mr. and Mrs. Anthony Ames
 Amgen Inc.
 Joan and Peter Andrews
 Art Alliance for Contemporary Glass
 William and Midori Atkins
 Embassy of Austria
 Milton and Sally Avery Arts Foundation
 Anne and Raymond Baddour
 Mr. Smith W. Bagley
 Ms. Kathy Bailey
 Joe and Holly Baker
 Barclays Global Investors
 Elaine Dee Barker Revocable Trust
 Mr. Robert B. Barnett
 Mr. and Mrs. Edmund Bartlett III
 Anne H. Bass
 Bear Wagner Specialists LLC
 Bedell Cellars*
 The Berkley Family Foundation
 Mr. Tom A. Bernstein
 Ms. Lorraine Wrightson Besch
 B.F. Saul Property Company
 Richard and Elaine Binder
 Blank Rome, LLP
 Charles and Wendy Block
 Count and Countess Peder Bonde
 Mr. and Mrs. Timothy J. Bork
 Ms. Marcella Brenner
 Mr. Don Brown
 Mr. and Mrs. Winthrop N. Brown
 Mr. and Ms. Mark Buell
 Karen and Edward A. Burka
 Mr. Conrad Cafritz (Conrad Cafritz Charitable Trust)
 Mr. and Mrs. William Cafritz
 Embassy of Canada*
 Dr. Thomas A. Cellucci
 CGF Shoniya Fund
 Mr. and Mrs. David Challinor
 Chamber Music America, Inc.
 Alfred and Kathryn Checchi
 Nicole M. Chestang
 Christian Relief Services
 Mr. and Mrs. A. James Clark
 CoBank

Mr. Arthur Cohen (Laplaca Cohen Advertising, Inc.)
 Mr. and Mrs. Lauren Colby
 Kenneth Cole Foundation
 Mr. Bruce B. Collette
 The Community Foundation for the National Capital Region
 Congressional Hispanic Caucus
 Constellation Wines*
 Mr. Max W. Corzilius
 Mr. James Costello*
 Ms. Allison Stacey Cowles and Mr. Arthur Sulzberger†
 Mr. Eric Daniels
 Dr. and Mrs. Worth B. Daniels (The Jane & Worth B. Daniels, Jr. Fund)
 Darby Overseas Partners, L.P.
 Dr. Marion Deshmukh and Dr. Ashok Deshmukh
 Dewey Ballantine LLP
 Mr. and Mrs. Charles D. Dickey, Jr.
 Mr. and Mrs. Dale F. Dorn (Joseph H. Thompson Fund)
 Dr. and Mrs. Ronald I. Dozoretz (FHC Health Systems, Inc.)
 Dr. John Driscoll (Babcock Galleries)
 Helen and Ray DuBois
 The Honorable Robert W. Duemling and Mrs. Duemling
 Mr. Trung Dung
 Mr. Albert J. Dwoskin
 Dynamac International, Inc.
 Michael and Juanita Eagle
 Earth Share
 Edelman Financial Services
 El Tiempo Latino*
 Mr. and Mrs. Richard England, Sr.
 Epic Meetings & Production
 Excel Mortgage & Investment Services, Inc.
 EyakTek
 Mr. and Mrs. Arthur A. Feder
 Federated Department Stores, Inc.
 Felicia Fund Inc.
 Mr. and Mrs. Raul J. Fernandez
 Clinton and Elaine Fields
 The Figge Foundation
 First Nations Development Institute
 Doris and Donald Fisher
 Four Seasons Hotel*
 Ms. Jacqueline Fowler
 Mr. and Mrs. Charles L. Frankel (Charles & Diane Frankel Philanthropic Fund)
 Mr. and Mrs. Jay W. Freedman
 Mr. and Mrs. Stephen Friedman
 Mr. J.B. Fuqua
 Mr. Giorgio Furioso
 Martha and Paul Gaffney
 Mr. and Mrs. Warren B. Galkin
 Henrietta Gates and Heaton Robertson
 GE Foundation
 The George Washington University
 Ms. Linda George
 Mr. and Mrs. Gordon P. Getty (Ann & Gordon Getty Foundation)
 GGNN Inc.*
 Dr. Patricia Lewy Gidwitz
 Mr. Clifford H. Goldsmith (Louis Callmann Goldschmidt Family Foundation, Inc.)
 Mr. and Mrs. C. Michael Gooden
 Eugene and Emily Grant Family Foundation
 Richard and Peggy Greenfield

Mr. Alan D. Grinnell
 Gucci America
 Mr. Erwin Gudelsky
 Ms. Barbara Guggenheim and Mr. Bertram Fields (Guggenheim, Asher Associates, Inc.)
 Nancy E. Gwinn and John Y. Cole
 Mr. John M. Haddow (Rita C. and John M. Haddow Family Foundation)
 Hakatai Enterprises, Inc.*
 Ms. Ruth Ann Harnisch
 Mr. and Mrs. Robert O. Harris
 Mr. James P. Hayes
 Martha Hertelendy
 Paul Hertelendy†
 Frederick D. Hill (Berry-Hill Galleries, Inc.)
 David and Ursula Hinson
 Mrs. Olga Hirshhorn (Olga & Joseph H. Hirshhorn Foundation, Inc.)
 Mr. and Mrs. Henry Nuoi Hoang and Family
 Holland & Knight Charitable Foundation, Inc.
 Mr. Jonathan Holstein
 Samuel Holtzman Family Foundation, Inc.
 Ms. Emma Hom
 Mr. and Mrs. Joseph Horning, Jr.
 Mr. Eric R. Horowitz
 Mr. Carter W. Hotchkiss
 Sir Joseph Hotung
 Howat Family Foundation (John and Anne Howat)
 Nora Hsu and Barry C. Davis
 Miss Elizabeth Ann Hylton
 ICF International, Inc.
 Interactive Communications Research Inc.*
 International Association for Bear Research & Management
 International Brotherhood of Teamsters
 International Society of Transport Aircraft Trading Foundation
 Jill and Kenneth Iscol
 Suzanne Denbo Jaffe
 Robert L. and Anne K. James†
 Ms. Wendy Jeffers and Mr. Anthony Orphanos
 Rev. John I. Jenkins, C.S.C.
 Mr. Philip C. Jessup, Jr. and Dr. Helen I. Jessup
 Mr. Richard A. Jonas
 Mrs. Linda Lichtenberg Kaplan and Dr. Louis D. Kaplan
 Mrs. Marjorie Kartinos
 The Keds Corporation
 The David Woods Kemper Memorial Foundation
 Dona S. Kendall†
 Donald & Marilyn Keough Foundation
 Mr. and Mrs. Norman V. Kinsey
 Dr. Rebecca Klemm
 Mr. Carl W. Knobloch, Jr.
 Kraus Family Foundation
 The Kresge Foundation
 Land Rover Rockville
 Mr. and Mrs. Bruce S. Lane
 Dr. Deirdre A. LaPin
 Lawrence A. and Janet Y. Larose
 Lazare Kaplan International Inc.
 Mr. Thomas H. Lee and Ms. Ann Tenenbaum
 LEF Foundation
 Marguerite and Gerry Lenfest†

Dr. and Mrs. Randall Lengeling
 The Lessing Foundation
 Mr. and Mrs. J. Thomas Lewis
 Mr. and Mrs. Brian S. Leyden
 Ms. May Liang and Mr. James Lintott
 Mr. John M. Liebes
 Tommy and Gill LiPuma
 Ruth and Leonard Litwin
 Reva and David Logan Foundation
 Mr. and Mrs. Meredith J. Long
 Mr. David Luken
 Luna Textiles*
 Ms. Kayrene Lunday
 M S Grand, Inc.
 Mr. and Mrs. Frank N. Magid†
 Dr. Hugh M. Mainzer and Mrs. Jill Jarecki Mainzer
 Mr. and Mrs. Charles T. Manatt, Esq.
 Mars Foundation
 Mr. and Mrs. Robin B. Martin
 Nan Tucker McEvoy†
 Gilbert and Jaylee Mead
 Edward and Sandra Meyer Foundation, Inc.
 Mississippi Band of Choctaw Indians
 Moglia Family Foundation, Joe Moglia
 Mr. and Mrs. Walter Moore
 Ms. Suzanne Morgan
 Mr. Jesus Morales
 The Honorable Alfred H. Moses and Mrs. Fern Schad (The Alfred Moses Family Fund)
 Pearl and Seymour Moskowitz
 Multiples, Inc./Marian Goodman Gallery
 Mrs. Don C. Musick
 National Congress of American Indians
 Native American People of Verizon
 Mr. and Mrs. Wilson Nolen
 Robert and Nancy Nooter
 Ms. Marilyn Norris
 Northern Trust
 Olson Sundberg Kundig Allen Architects
 ORC Macro
 Janice C. and Roger B. Oresman
 Organic Bouquet*
 P&N Title and Settlement Inc.
 Ms. Glenn Parkinson and Mr. Greg Maher
 Henry and Rose Pearlman Foundation, Inc.
 Pearson Art Foundation
 H.O. Peet Foundation
 Tony and Kitty Pell
 Mrs. Thomas Perkins
 Ms. Antoinette Peskoff
 Philadelphia Museum of Art
 Point Defiance Zoo & Aquarium
 Mr. and Mrs. Howard Polskin
 Ms. Marla Prather and Mr. Jonathan Schiller
 PricewaterhouseCoopers LLP
 Project Alabama
 ProQuest
 Alfa Radford
 Ms. Katherine Rand
 Mrs. William Rapp
 Mr. and Mrs. Burton J. Reiner
 The Honorable Stanley Resor
 Mary Livingston Ripley Charitable Lead Trust

* Partial or full gift in-kind

Rite Aid*
 Rizik's
 Rona and Richard Roob
 Mr. and Mrs. Francis C. Rooney, Jr.
 Mr. and Mrs. Benjamin M. Rosen
 (The Benjamin M. Rosen Family
 Foundation)
 Mr. E. John Rosenwald, Jr.
 (Monterey Fund, Inc.)
 Mr. and Mrs. David Ross
 Rough Guides
 Donald and Shelley Rubin
 The Arthur M. Sackler Foundation
 Mrs. Edmond J. Safra
 Mrs. Betty Sams
 Mr. John L. Sanders and
 Mrs. Ann Beal Sanders
 Saturn Electronics & Engineering
 Ms. Jean F. Schulz
 Bernard and Irene Schwartz
 Foundation, Inc.
 Scotts Miracle-Gro Company
 Brent Scowcroft
 The Beatrice & Samuel A. Seaver
 Foundation
 Ms. Ruth O. Selig
 Mrs. William H. Shopp
 Shreves Philatelic Galleries, Inc.
 Siemens Building Technologies
 Robert and Susan Simmons
 Ms. J.L.H. Simonds
 Dr. Lowery Stokes Sims
 Mr. and Mrs. Warren J. Sinsheimer
 The Honorable Rodney E. Slater
 and Mrs. Slater
 Joel E. Smilow Charitable Trust
 Mrs. Helen B. Spaulding‡
 Stafford County Public Schools
 Stamats Communications, Inc.
 R. Julian and Margaret A. Stanley
 Charitable Trust
 Ms. Eva B. Stark
 Dr. and Mrs. R. Ted Steinbock
 Mr. Michael Steinhardt (The Judy and
 Michael Steinhardt Foundation)
 Mr. and Mrs. Henry Steinway
 Margaret and Terry Stent
 Sidney Stern Memorial Trust
 Mr. and Mrs. George Stone
 Mr. and Mrs. William C. Storey
 Ms. Stephanie Strass and
 Mr. Carlton Neville
 Mr. Leland Swamer
 Roselyne Chroman Swig
 Mr. John Sykes
 The TATA Group
 Jack C. Taylor & Enterprise
 Rent-A-Car
 Mr. and Mrs. Vernon F. Taylor, Jr.‡
 Texas Instruments Incorporated
 William E. Thomas, Jr.
 Flora L. Thornton Foundation
 Mr. and Mrs. Donald G. Tober
 (Barbara and Donald Tober
 Foundation)
 T.R. Fox Contracting, Inc.*
 Stephen Joel Trachtenberg
 Ton Duy Tran, M.D.
 Jean and Raymond Troubh
 Dr. Robert L. Truax*
 UBS
 University of Maryland, Baltimore
 US Embassy in Sanaa
 Mr. and Mrs. Anton R. Valukas

Mrs. Langdon VanNorden
 Drs. Ban T. Vu and Loc Nguyen
 Warner Music Group Services
 Washington's Legacy Teaching
 American History Grant Project
 James D. Watson Family Foundation
 Ellen Bayard Weedon Foundation
 The Honorable and Mrs. Frank Weil
 (Hickrill Foundation)
 Mrs. Franc Wertheimer
 The Whitehead Foundation
 (John C. Whitehead)‡
 Ms. Estelle R. Wolf
 Ms. Candace Wong
 Mr. Melvin O. Wright
 Mr. Leo Zickler (Zickler Family
 Foundation)

\$2,000 or more

Anonymous
 Abigail Kirsch at Tappan Hill, Inc.
 A.C.N.M. Foundation, Inc.
 Mr. Brian Aitken
 Albuquerque Convention & Visitors
 Bureau
 Alcan Aluminum, Ltd.
 Mr. and Mrs. William C. Allbert
 Ms. Carolyn Small Alper
 Mrs. Marilyn Alsdorf
 Mr. and Mrs. Samuel A. Alward
 The American-Scandinavian Foundation
 Mr. Joseph T. Anderson
 Warren Ross Anderson
 Mr. and Mrs. William S. Anderson
 (William S. and Janice R. Anderson
 Foundation)
 Mr. W. Graham Arader III
 Art Center College of Design
 Ashton Title & Escrow Company
 Ronnie A. Atinaja, Federation
 of Philippine Societies in New
 Jersey, Inc.
 Ms. Mary Aufderheide
 Mr. and Mrs. Robert D. Bailey
 Mr. Elliot A. Baines
 Marcie L. Bane and
 Michael X. Imbroscio
 Mr. and Mrs. Robert Barbanell
 Mr. Richard Colin Barkell
 Lewis and Joan Barnes
 The Barns Fund
 Mr. and Mrs. Robert A. Bartlett, Jr.
 Bat Conservation International, Inc.
 Laura Bay
 Mr. and Mrs. T.E. Beck, Jr.
 Mr. James S. Beckwith III
 Embassy of Belgium*
 Mrs. Ruth Biggerstaff Berman
 Ms. Stephanie Bernheim
 (The Bernheim Foundation, Inc.)
 Bibliomania!
 Ms. Judith Bishop
 Ms. Beth P. Black
 Drs. Stanley M. and Annette Blaugrund
 Bloomingdale's
 The Boden Group, LLC
 Ms. Barbara Boger
 Bostock Family Foundation
 Dr. Paula Botstein and
 Mr. Robert Usadi
 Bowes Family Foundation
 Dr. Mark S. Box
 Dr. and Mrs. William B. Boyd
 Mr. and Mrs. John M. Bradley‡

Ms. Patricia A. Bradley
 Mr. Charles Brickbauer and Mr.
 Bernhard Hildebrandt
 The Brimstone Fund
 The Eli and Edythe L. Broad Foundation
 Dr. and Mrs. Stanley Brockman
 Carolyn Schwenker Brody
 Mr. and Mrs. Jere Broh-Kahn
 Dr. and Mrs. John B. Brough
 W. and K. Brown
 Dr. John H. Bruckner
 Mr. and Mrs. Timothy Bryan
 Mr. J. Kevin Buchi and
 Dr. Kathleen M. Buchi
 Mrs. James J. Butler
 Mr. Warren F. Buxton, Ph.D., CDP
 Mrs. Carolyn B. Byers
 Mr. Carter Cafritz
 The Capital Group Companies, Inc.
 Mrs. Jane Chace Carroll (Point
 Gammon Foundation)
 Ms. Joanne Leonhardt Cassullo
 (Dorothea L. Leonhardt Foundation)
 Caterpillar Foundation
 Mr. and Mrs. C. Stanley Chapman, Jr.
 Charina Foundation, Inc.
 Mr. and Mrs. Ivan Chermayeff‡
 Cherokee Nation
 ChevronTexaco
 Mr. Thai Christie
 Christie's*
 Ms. Li Chu
 Cincinnati Zoo & Botanical Garden
 The Citadel Group Foundation
 City Club of Washington*
 The Honorable Jeannine Smith Clark
 and Dr. Charles H. Clark‡
 Mr. and Mrs. Wilmer S. Cody
 Mr. Ralph T. Coe
 Mr. Jerome A. Cohen and
 Mrs. Joan Lebold Cohen
 The Coles Family Foundation
 Earl and Helen Colson
 Columbian Stamp Company*
 Mr. Richard P. Cooley
 The Jacob Corre Family Fund
 Countrywide Home Loans, Inc.
 Melissa Courtney
 Ruth Covo Family Foundation
 Gretchen Smith Crow
 The Crown Family
 Mr. Daniel M. Crown
 Mr. and Mrs. Edgar M. Cullman, Jr.
 Karen L. Daigle, MD
 Danbury Public Schools
 Mr. and Mrs. John Despres
 Ms. Janet L. Dewar
 Ms. Marcia Dewey
 Dickinson State University
 Ms. Vellie Sandalo Dietrich-Hall
 Mr. Niels Diffrient
 Mr. and Mrs. George C. Dillon‡
 The Dimick Foundation
 Barbara E. Dittman, M.D.
 Domestic Petroleum Council, Inc.
 Mary F. Dominiak
 Ms. Michelle Oka Doner
 Ms. Ramona C. Douglass
 Mr. William Drenttel and
 Ms. Jessica Helfand
 Ms. Helen Drutt
 Mr. and Mrs. Ronald N. Dubin
 Rosemary A. Duckworth
 Ms. Althea L. Duersten

Mr. and Mrs. Charles A. Duncan
 Ms. Anita Dunn
 Edison International
 Ehrenkrantz Eckstut & Kuhn
 Architects
 Environmental Leadership Center
 of Warren Wilson College
 Mr. and Mrs. Giuseppe Eskenazi*
 The Evans Family Foundation, Inc.
 F P Homes Associates LP
 Samuel and Ranch Fachorn
 Ms. Mary C. Falvey
 Mr. and Mrs. Daniel G. Felger
 Filipino-American Service Group, Inc.
 Findlay-Freeman Fund
 Fine Art Dealers Association
 Dr. and Mrs. Oliver S. Flint, Jr.
 Mr. Jeffrey A. Forbes
 Ms. Debra J. Force (Debra Force
 Fine Art, Inc.)
 Mr. and Mrs. Eric Potts Fraunfelder‡
 Mr. and Mrs. Robert Freedman
 (Knoedler Gallery LLC)
 Ms. Marilyn Friedman
 Mr. and Mrs. L.J. Futchik
 Fxfowle Architects, PC
 Gannett Foundation
 Ms. Ana Maria Garcia
 Mrs. Joan Gardiner
 George Mason University
 Mr. Paul V. Gerlach
 Mr. Lewis Geyer
 Karyn C. Gill and
 George McC. Gill, MD
 Mr. and Mrs. Eugene P. Gillespie
 Paul and Joan Gluck
 Ms. Marcy Goldberg
 Dr. Margaret A. Goodman
 Mr. and Mrs. Don Granston
 Mr. Byron L. Gregory
 Marilyn Grossman
 Mr. Harry Grubert
 Mr. Sonny Hagendorf
 Ms. Gail A. Hager
 Mr. and Mrs. George W. Haldeman
 (Margaret M. and George W.
 Haldeman Fund)
 Ms. Tamson Hamrock
 Mr. Collier Hands
 Ms. Halley Harrisburg and
 Mr. Michael Rosenfeld
 Mr. and Mrs. Marion Edwyn
 Harrison‡
 Mr. Peter Harter
 Health & Education Volunteers, Inc.
 Richard L. Hedden
 Ms. Denise M. Henry
 Susan and Robert L. Hermanos
 Ms. Rose Herrman
 Dr. and Mrs. W. Ronald Heyer
 Mr. and Mrs. George G. Hill
 Mr. and Mrs. Conrad Hipkins
 Ms. Laura H. Hoffman
 Mr. C.W. Homer
 Ms. Nettie Horne
 The R.J. Horowitz Foundation
 for the Arts, Inc.
 Ms. Virginia G. Hough
 Mr. and Mrs. Timothy Howard
 Ms. Barbara Hunter
 In Style
 Interface Americas*
 The Japan-American Society of
 Washington, Inc.
 Mr. Stephen D. Jeffrey

Mr. and Mrs. David S. Jernigan
Colonel Lois A. Johns
Mrs. Lynn D. Johnston (W.S. Johnston Foundation)
Mr. Freeman Jones
Mr. Michael S. Jones
Thomas and Elizabeth Jones
Mrs. Vivian M. Jones
Mr. and Mrs. Vernon E. Jordan, Jr.
Mr. Alan Robert Kabat
Michele and Thomas Graham Kahn Philanthropic Fund
Ms. Melinda Kaiser
Dr. Peter R. Kaplan
Sheldon and Audrey Katz
Ms. Margaret H. Kavalaris
Dr. and Mrs. Ashok Kaveeshwar
Mr. and Mrs. Kevin Kelley (Kevin and Lee Kelley Charitable Fund)
Harris & Eliza Kempner Fund
Dr. Victor S. Kennedy*
Ms. Janice J. Kim
Mr. William Kissinger
Mr. Thomas G. Klarner Knoll, Inc.
Mr. Heywood J. Knopf*
Mr. Harinder Kohli
Mr. Ross Koller
Government of the Republic of Korea
The Honorable Colleen Kotelly and Mr. John T. Kotelly
Mr. and Mrs. Nick Kotz
Mr. and Mrs. Vello Kuuskraa (Advanced Resources International)
Mr. and Mrs. Cameron La Clair
Mr. Jeffrey Lande and Ms. Robin Goffen
Ms. Josie Leavitt
Ms. Denise C. LeClair-Robbins
Mr. Laurence C. Leeds, Jr.
The Honorable Marc E. Leland and Mrs. Leland (Marc E. Leland Foundation)†
Mr. and Mrs. Jacques E. Lennon
Ms. Elissa Leonard
Mr. and Mrs. Ted Leonsis
Mr. Lucien Levesque
Levin Capital Strategies LP
Leon Levy Foundation
Ms. Dorothy Lichtenstein
Mr. Samuel H. Lindenbaum (Lindenbaum Family Charitable Trust)
Ms. Marilyn C. Link
The Honorable Nita M. Lowey
Mr. Joshua L. Mack
Ms. Kathryn MacLane
Mr. Noriko Maeda
Ms. Audrey R. Magee
Mr. and Mrs. Creighton R. Magid
Carl Magnusson and Emanuela Frattini Magnusson
Malott Family Foundation
Dr. Richard E. Mansfield
Mr. and Ms. Greg Marchand
Mr. Richard C. Marcus
The Marketing Arm
Mrs. Frances Markham
Elaine and Paul Marks (Woodmere Road Trust)
Sherrill Rigot Marks
Marrus Family Foundation, Inc.
Charlene C. and Tom F. Marsh

Nicholas and Lovella Martin Fund,
Community Foundation of North Texas
Martin's Herend Imports, Inc.
Mr. and Mrs. Arthur K. Mason
Ms. Catherine Berger Mason
James and Marsha Mateyka
Ms. Barbara McClung
Mr. and Mrs. Ellice McDonald, Jr.
Mr. Nion McEvoy
McIntyre Foundation
Mr. and Mrs. Todd Mackay
Mr. Chris E. McNeil, Jr.
Scott and Hella McVay†
McWilliams Ballard, Inc.
Mr. and Mrs. Eugene Mercy, Jr.
Metropolitan Center for Far Eastern Art Studies
Mid Atlantic Section - A.U.A.
Louise Middlemiss
Diane and Kenneth Miller†
Lawrence and Iris Miller
Ms. Debbie Millman
Doctors Stephen J. and Marie E. Minnich
Mr. Ezra Mintz
Ms. Carol Mitchell
Mr. and Mrs. Walter F. Mondale (Elmore Foundation of the Saint Paul Foundation)
Mr. Dominic J. Monetta
Mrs. Joan Turner Moore
Dr. and Mrs. Roscoe M. Moore, Jr.
Robert L. Morelli Foundation
Mr. and Mrs. Paul S. Morgan†
Gordon C. Morison
Ms. Catherine Morrison
Dr. Douglas W. Morrison
Jane and John Morrison†
Mr. Francis X. Morrissey, Jr.
Mr. Murray Moss
Motorola, Inc.*
Mr. and Mrs. James Mrazek (Frost and Noble Foundation)†
Mr. and Mrs. Roger Mudd
Mr. Thomas D. Mullins†
Helen M. Murway
Muse Enterprises, Inc.
Mr. and Mrs. Andre Nasser
National Council of Negro Women
National Film Preservation Foundation
The National Italian American Foundation
Natural Gas Supply Association
Mr. Sarab Neelam
Consulate General of the Netherlands
NETSAP - DC Foundation, Inc.
Katherine Neville
The New York Times Company
Mrs. Frances Newman
Mr. Audrey Newton
Mr. Dave Trong Nguyen
Thong and My-Chau Nguyen and Family
Linda Nietes/Philippine Expressions Bookshop
Alok C. Nigam
Ms. Anna Belle Nimmo
North Carolina State University
Northwest Airlines Corporation*
Mr. and Mrs. Morris W. Offit
Frederick P. Ognibene, M.D.
Mr. Peter F. Olberg
The Overbrook Foundation

Robert Owens and Eve Klein
Mr. R.P. Owsley
Mr. Marc Pachter
Ms. Pamela N.D. Pagano
Dr. Sharon Frances Patton
Mr. and Mrs. Henry M. Paulson, Jr.
Pearson & Associates*
Peduzzi Associates, Ltd.
Pentagram Design, Inc.
Mr. David Perry
Ms. Susan Berla Perry
Peter Walker Partners
Mrs. Mechthild "Mitzi" E. Peterson
Philippine Science High School
Mr. Doan L. Phung
Stephen and Melanie Pickett
Mr. Michael Pierce
Ms. Elizabeth O. Pitts
Polshak Partnership Architects
Mr. and Mrs. Douglas Poretz
Mr. and Mrs. Peter G. Powers
PPG Aerospace, PRC-DeSoto International, Inc.
Mr. James D. Price (Fieldland Investment Company)
Mr. Richard James Price
Propex Fabrics*
Prospect Waterproofing
Purser Associates, Inc.*
Teandra B. Pyles
Patrick and Rosalinda Raheer
Rawbee Honey, LLC
Mr. Kurt Reisenberg
Rhode Island School of Design
Dr. Ruth Oratz Ridless
Miss Elizabeth Candida Ridout
Ms. Barbara J. Riley
Ms. Rosemary L. Ripley (Rosemary L. Ripley Foundation)
Ms. Esther H. Rivinus
Mr. Douglas M. Robinson
Ms. Jane Washburn Robinson
Rochdale Investment Management LLC
Karol K. Rodriguez
Mr. and Mrs. Edward Rose
Mr. Ernie Rosenberg
Mr. Alfred F. Ross
Mr. James Rowe and Ms. Lisa Adams
Mr. and Mrs. Thomas Rowlett
Royal Philatelic Society London
Ms. Susan Lynch Ruddy
Ms. Jane Dresner Sadaka
The Safer-Fearer Fund in The New York Community Trust
Mr. and Mrs. Lawrence Salander
The Daniel I. Sargent Charitable Trust
Mr. Donald J. Sasser
Saudi Arabian Airlines*
Mr. and Mrs. Douglas A. Schubot
Scott Publishing Company, Inc.
Dr. and Mrs. Robert C. Seamans, Jr.
Search to Involve Pilipino Americans
The Seattle Foundation
Security Storage Company - Robert L. Tull
Ms. Barbara Stern Shapiro
Joel Shapiro
Mr. and Mrs. Robert F. Shapiro
Mr. Lawrence Shar
Ms. Kate M. Sheehy
Ms. Louise Shelley
Ms. Virginia Shore and Mr. Thomas Hardart
Shout! Factory LLC

Mary Hudson Siciliano
Mr. Herbert J. Siegel (Ann L. and Herbert J. Siegel Philanthropic Fund)
Mr. and Mrs. Robert Sinclair
Skybridge Commercial
Dr. Mary Slusser
SMH Associates, LP
Mr. and Mrs. Darrell Smith
Kathy Daubert Smith†
Mr. and Mrs. E. Maynard Smith†
Peggy and Stan Smith
Richard A. and Joan M. Smith
Snow Time Resorts
Sotheby's, Inc.
Mary Spink
The Spirit of Sovereignty Foundation
Splendid Fare Catering*
Sprint Foundation
Mrs. Christie L. Spung
Stamps.com
Mr. Philip Stanton
Joan Sterne
Mr. Richard W. Stickle
Mr. Emmett E. Stobbs, Jr.
Mr. Sidney Stolz
Mrs. William and Nancy Stone
Mr. Michael Ward Stout (The Robert Mapplethorpe Foundation, Inc.)
Major Willard H. Strandberg, Jr. and Mrs. Ann Strandberg
Mr. and Mrs. Allan Stypeck
Clara Diamant Sujo
Mr. Steven M. Sumberg
Ms. Cassandra Hanely Sumerlin
Dr. Michael M. and Janice R. Sveda
Swarovski
Mr. William R. Sweeney, Jr.
Mr. Benjamin T. Swentnickas
Amanda and George Sykes
Tahanan Inc.
Mr. and Mrs. David Tamayo Lott
Mrs. Marjorie W. Thompson
Sir John Thomson and Lady Thomson
The Alan & Peggy Tishman Foundation
Peter and Lynn Tishman (Peter and Lynn Tishman Fund, Inc.)
Tobin and Tucker
Mr. Ruben Toledo
Ms. Marana W. Tost
Mr. and Mrs. J. Thomas Touchton
The Honorable and Mrs. Russell E. Train
Ms. Jackie P. Tran
Mr. Vo Tran
Mr. and Mrs. Ranvir K. Trehan
Ms. Billie Tsien and Mr. Tod Williams
Ms. Beth Tuttle
Sharon and Thurston Twigg-Smith
Mr. and Mrs. Peter R. Tyson
Mr. Andreas Ueland
United States Stamp Society
University of Chicago
The University of Montana Foundation
Vandeventer Black LLP
Vanguard Construction & Development Co., Inc.
Mr. Bruce Vinokour
Vintage Grape*
Mrs. Pauline Vollmer
Colonel Hal Vorhies
Mr. and Mrs. C. Carter Walker

Ray T. Weeks
 Weil, Gotshal & Manges
 Mr. and Ms. James Weinberg
 Western Union
 The Charlotte and Edward K.
 Wheeler Foundation
 Paula McCaskill Whitehouse and
 Michael Whitehouse
 WHUR Radio*
 Gary Wicklund Family Fund
 Ms. Anita V. Wien
 Ms. Annie Cayaban Wilderman
 Ms. Leslie Wilkes
 Robert Willasch
 John R. Wilson
 Mr. Wayne Wilson
 Mrs. Robert E. Wiss
 Mr. Alfred L. Wolf
 Diane Wolf
 Mr. Stanley A. Wtulich
 Mr. and Mrs. Andrew Wyeth
 Xcel Energy Foundation
 Yavapai-Prescott Board of Directors
 Dr. Tomas Ybarra-Frausto
 Mr. Sam Yoon*
 Mr. William D. Zabel (Merlin
 Foundation)
 Mr. Walter E. Zalenski
 Ms. Ann Zann
 Zenith Gallery

SMITHSONIAN CORPORATE MEMBERS

Corporate memberships forge dynamic ties with businesses nationwide and provide important unrestricted support to Smithsonian education, research, and exhibition initiatives.

3M
 Accenture
 Aflac Incorporated
 Aliniad Consulting Partners, Inc.
 Altria Group, Inc.
 American Benefits Council
 American Express Company
 APICO, LLC
 Aventis Pharmaceuticals US
 Bank of America
 The James Beard Foundation
 Booz Allen Hamilton Inc.
 BP, p.l.c.
 The Carlyle Group
 CH2M Hill Companies, Ltd.
 Christie's
 Clark Construction Group, LLC
 The Coca-Cola Company
 ConocoPhillips
 Consolidated Edison Company of
 New York, Inc.
 Covington & Burling
 DaimlerChrysler Corporation
 Delegation of the European
 Commission to the U.N.
 Dewey Ballantine LLP
 DuPont
 Eagle Materials, Inc.
 EMC Corporation
 ExxonMobil
 Fannie Mae
 Fidelity Investments

The Financial Services Roundtable
 Freeport-McMoRan Copper &
 Gold, Inc.
 Ford Motor Company Fund
 The Foundation Center
 Fujifilm
 GE Foundation
 Goldman, Sachs & Co.
 Hermes of Paris, Inc.
 Johnson & Johnson
 Kansas City Southern
 Knoll, Inc.
 KPMG LLP
 Liz Claiborne, Inc.
 Lockheed Martin
 Lyondell Chemical Company
 Masterfoods USA
 Maverick Capital, Ltd.
 Merrill Lynch & Co., Inc.
 Metavante Corporation
 Moody's Corporation
 Municipal Arts Society
 National Cable & Telecommunications
 Association
 NECO Foundation, Inc.
 NMS Group, Inc.
 Northrop Grumman Corporation
 Omni Shoreham Hotel
 PAETEC Communications, Inc.
 Pali Capital, Inc.
 PEPCO
 Pfizer Inc
 Research Foundation of the City
 University of New York
 S.C. Johnson & Son, Inc.
 Siemens Building Technologies
 Sony Corporation of America
 Southern Company
 The Spence School
 Target Corporation
 TD Bank Financial Group
 Texas Instruments Incorporated
 Tiffany & Co.
 Time Warner Inc.
 The Tokyo Electric Power Company, Inc.
 Trevor Day School
 UJA-Federation New York
 University of Pennsylvania
 USM Modular Furniture
 Velsor Properties, LLC
 Verizon Communications, Inc.
 The Walt Disney Company
 Whole Foods Market
 Xerox Corporation
 Zetlin & DeChiara LLP

**CONTRIBUTING MEMBERSHIP
 AND JAMES SMITHSON SOCIETY**

Through their support, the Contributing Membership and its James Smithson Society help deliver exceptional museum experiences, outstanding research, and world-class educational outreach at America's museum. In 2006, the Contributing Membership raised \$13.9 million in unrestricted funds, \$1.5 million of it from James Smithson Society members. Spurred by major Smithsonian openings, such as this year's magnificent Donald W. Reynolds Center, Contributing Members nationwide increased their giving. Attendance at Washington, D.C., member events rose to record levels, and the James Smithson Society saw its membership and member contributions increase by double-digit amounts. At the James Smithson Society annual Gala Dinner at the National Air and Space Museum's Milestones of Flight Gallery, Smithsonian Regent Roger Sant and Smithsonian National Board alumna and Gala Weekend Co-chair Mary Ourisman thanked members for their commitment to the dynamic unfolding of James Smithson's founding vision.



James Smithson Society Guild members were invited guests at the Smithsonian National Board's State Department reception held during the Smithsonian Society's 2006 Gala Weekend. Shown are Smithsonian Society members May Liang and James Lintott.



James Smithson Society members Roger Sheldon, Paul and Deane Shatz, and Carol Sheldon enjoy An Evening of Firsts, the 2006 Gala Reception and Dinner at the National Air and Space Museum.

**JAMES SMITHSON SOCIETY,
THE CONTRIBUTING
MEMBERSHIP**

James Smithsonian Society members share a deep commitment to the advancement of the Institution through their dues and special gifts.

± James Smithsonian Society Sustaining Fellows
^ Smithsonian National Board member or alumnus
◊ Endowed Life member

**Guild Members
\$10,000 or more**

Anonymous (2)
Claudia R. Allen and Willis M. Allen, Jr. ^
Mr. Philip F. Anschutz (The Anschutz Foundation) ^
The Jean Axelrod Memorial Foundation ±
Mr. and Mrs. Craig R. Barrett ^
Grace and Morton Bender
The Eli and Edythe L. Broad Foundation
Mr. J. Kevin Buchi and Dr. Kathleen M. Buchi ±
Peggy and Ralph Burnet ^
Hacker and Kitty Caldwell ^
Mr. and Mrs. Michael A. Callen ±
Mr. and Mrs. Richard O. Campbell ^
Mrs. Jean Case ^
The Honorable Paul L. Cejas and Mrs. Cejas (The Cejas Family Foundation, Inc.) ^
Dr. Thomas A. Cellucci
Mr. and Mrs. L. John Clark
Mr. and Mrs. Peter Claussen ^
Dr. and Mrs. David A. Cofrin ±
Julia and Frank Daniels, Jr. ^
Jim and Janet Dicke ^
Mr. and Mrs. Charles D. Dickey, Jr. ^
Kathryn and George A. Didden III ^
Miranda and Robert Donnelly (The Donnelly Foundation) ^
Mr. and Mrs. Michael D. Eisner (The Eisner Foundation) ^
Mr. and Mrs. William Fisher ^
Mr. Bradford M. Freeman ^
Mr. Cary J. Frieze and Mrs. Rose Frieze ± ◊
Patricia and Phillip Frost ^
Mr. and Mrs. Carl S. Gewirz ±
Mr. and Mrs. Alfred C. Glassell, Jr. ^
Mrs. Stephen Hamblett ^
The Frederic C. Hamilton Family Foundation ^
Mr. and Mrs. Michael R. Haverty (Kansas City Southern) ^
Catherine and Richard W. Herbst ^
Irene Y. Hirano ^
Frank and Lisina Hoch ^
Ruth S. Holmberg (The Sulzberger Foundation, Inc.) ^
Judy and Bob Huret ^
Mr. Oliver Kellman
Nancy and Rich Kinder, Kinder Foundation ^
Ms. May Liang and Mr. James Lintott ±
Peter and Paula Lunder ^
Elizabeth and Whitney MacMillan ^

Mr. and Mrs. John W. Madigan (Madigan Family Foundation) ^
Mr. and Mrs. E. Barry Mansur
John and Adrienne Mars ± ^
Margery and Edgar Masinter ^
Amy S. McCombs ^
Mr. and Mrs. Richard B. McCrary ±
Mr. and Mrs. Augustus C. Miller ^
Mr. Howard P. Milstein ^
Mr. and Mrs. Charles H. Moore ^
Lester S. and End W. Morse ±
Mr. Henry R. Muñoz III (Kell Muñoz Architects, Inc.) ^
Mr. Paul L. Neely ^
Ms. Nancy B. Negley ^
Mrs. Philip E. Nuttle
Mr. and Mrs. Mandell J. Ourisman ^
Mr. and Mrs. Russell E. Palmer, Jr. ^
Mr. Paul L. Peck ^
Mr. and Mrs. Edwin Phelps Kay and Dave Phillips ^
Thomas F. Pyle, Jr. ^
Reinsch Family
Mr. and Mrs. Edward Hart Rice ±
The Honorable Ronald A. Rosenfeld and Mrs. Rosenfeld (Rosenfeld Family Charitable Foundation) ^
Tony Rosenthal and Ruth Ganister ± ◊
Mr. and Mrs. Richard T. Schlosberg III ^
The Honorable and Mrs. Ivan Selin ^
Paul and Deane Shatz ±
David and Lyn Silfen Foundation ^
Sandra and Lawrence Small ^
Dee M. Studler and Ronald Mund
Mr. and Mrs. Kelso F. Sutton (Kelso F. and Joanna L. Sutton Fund) ^
Mr. and Mrs. James C. Taylor ^
Dr. Muriel C. Vincent ±
Mr. Douglas C. Walker ^
Mr. George A. Weiss ±
Betty Rhoads Wright ±
Mr. Henri Zimand ±

**Council Members
\$5,000 or more**

Anonymous (13)
Warren Ross Anderson ±
The Arctica and Abbey Foundation
Ms. Ursula Beaver
Max N. and Heidi L. Berry ^
Barbara and James Block ±
James E. Borleis
Mr. and Mrs. William Buckner
Mrs. Judith Louise Cherwin
Mr. and Mrs. Donald A. Cotton
Ms. Allison Stacey Cowles and Mr. Arthur Sulzberger ^
Mrs. T. Richard Crocker ±
Karen L. Daigle, MD ±
Dr. and Mrs. Worth B. Daniels (The Jane & Worth B. Daniels, Jr. Fund) ±
Dorothy and Julian Davidson
Nora Hsu and Barry C. Davis
Ralph and Patricia Dixon ±
Mr. and Mrs. Akram Elias
Mr. and Mrs. Peter L. Frechette ±
The Honorable William H. Frist, M.D.
Miss Pilar A. Garcia ±
Mr. Alfred Glassell III
Peter and Rhondda Grant
Ms. Marion E. Greene ±
Mrs. David R. Heebner ±
Mr. John E. Herzog ^
Mr. and Mrs. David S. Jernigan ±
Ms. Shelley Kay ±
Dr. and Mrs. William M. Layson ±

Marguerite and Gerry Lenfest ^
Ms. Mary Martell and Mr. Paul Johnson ±
Mr. and Mrs. Frank Martucci ^
The Gerald and Paula McNichols Family Foundation
Doctors Stephen J. and Marie E. Minnich
Mr. and Mrs. Michael A. Moran ±
Mr. and Mrs. Raymond E. Murray ±
Helen M. Murway ±
Jane Plimpton Plakias ±
Mrs. Charles L. Poor ±
Mr. and Mrs. Philip D. Reed, Jr. ±
Edward H. Sachtleben
Mr. and Mrs. B. Francis Saul II
Ms. Susan Scanlan
William A. and Heather W. Schoenborn
The Honorable Rodney E. Slater and Mrs. Slater ^
Mrs. Helen B. Spaulding ^
Alan and Terri Spoon
Sandra L. Sully ±
Mr. and Mrs. Jackson P. Tai ^
Mr. and Mrs. Vernon F. Taylor, Jr. ^
William E. Thomas, Jr.
Mr. and Mrs. Wesley S. Williams, Jr.
Jim and Richie Wright
Harriet and Norman Wymbms ±
Ellen and Bernard Young ±

**Circle Members
\$3,500 or more**

Anonymous (5)
Ms. Mayda Arias
Mr. and Mrs. G. Hall Barr
Robert S. Birmingham
Dr. George P. and Bonnie M. Bogumill ±
Mr. and Mrs. Mark Bufferl ±
Mr. Robert F. Bulens ±
Mr. Carter Cafritz
Donald W. Carl ±
Lori Cooke-Marra ±
Christopher B. Cope and Jamie J. Shaw
Mr. and Mrs. Alfred C. Dobbs, Jr. ±
Cheryl Dronzek
Mr. and Mrs. Richard England, Sr. ±
Charles and Sylvia Erhart ±
Mr. Timothy P. Fennell
Joanne T. Greenspun
Gina Hamister
Patricia and Galen Ho
Ms. Vicki Howard
Mr. and Mrs. Norman V. Kinsey ±
Doctors David Machuga and Sumati Rajan
The Honorable and Mrs. Frederic V. Malek
Mr. George R. Marion
Virginia C. Mars ±
Jane and John Morrison ^
Mrs. Marie L. Morrisroe
Mr. Richard P. Nespola, Jr.
Robert Oaks ±
Ms. Cheryl Owen
Toni A. Ritzenberg
Mr. Joseph Rivers
Mr. and Mrs. Lewis Andrew Rothkopf
Madge Warden Selinsky ±
Charles Siegel
Mr. and Mrs. Robert F.H. Sisson
Robert D. Smith
Mr. E. Hadley Stuart, Jr. ^
Craig and Catherine Weston
Gary S. and Lynne D. Wong

**Benefactor Members
\$2,000 or more**

Anonymous (41)
Lucian Abernathy
Neal B. Abraham and Donna L. Wiley
Dr. and Mrs. Samuel Webster Adams ±
Ralph and Birdie Albers ◊
Mr. Terry L. Albertson and Ms. Kathleen A. Blackburn
Margaret G. and L. Thomas Aldrich
Dr. Patrick C. Alguire ±
The Honorable Samuel Alito
Mr. and Mrs. Lambert E. Althaver
Mr. Charles F.W. Anderson
Kim and Gloria Anderson
Mr. and Mrs. William S. Anderson ^
Lucy and Rudy Arkin
Dr. and Mrs. Bryan Arling ±
Terry Atkinson
Mr. and Mrs. Donald G. Avery
Mr. Elliot A. Baines ±
Steven and LaRae Bakerink
Helen S. and Merrill L. Bank Foundation, Inc.
Mr. and Mrs. Toby Barbey ±
Janine F. Barre ±
Rhoda and Jordan Baruch ±
John and Kathie Baumgart
Susan and Thomas Baxter ±
John and Sally Beals
Mr. and Mrs. Robert D. Becker ±
Michael and Tootie Beeman ±
Mr. and Mrs. James M. Beggs ±
Mr. and Mrs. Bernie and Wendy Beiser ±
Mr. and Mrs. Thomas E. Belshaw
Mr. and Mrs. Jason R. Beresford
Mrs. Pegi W. Bernard
David L. Bernstein and Deborah Brudno
Susan and Craig Berrington
Richard and Barbara Blake
Mr. John H. Blazek
Joan and Roger L. Boerner
Mr. J.H. Boettger
William M. Bomar ± ◊
Margaret W. and William J.D. Bond ◊
Mr. Stanley L. Bonis
Mrs. Howard M. Booth ±
Mr. Bennett Boskey ±
Mr. and Mrs. Allen R. Boutz
Dr. Mark S. Box
Ms. Annelise Brand
Mr. and Mrs. Stephen F. Brauer ± ^
Professor and Mrs. James B. Breckinridge
The Mervyn L. Brenner Foundation, Inc.
Charles and Fleur Bresler
Dr. Karen Brock and Dr. Gil Brock
Ms. Agnes M. Brown
George and Clare Burch
Karen and Edward A. Burka ◊
Mr. and Mrs. Bob Byers
Phyllis H. Carey
Mae Casner
Dr. William H. Casson
Ralph and Jean Cazort ±
Vint and Sigrid Cerf
Jonathan L. Chang
Alfred and Kathryn Checchi
Mr. and Mrs. Brantley B. Christian
Ms. Li Chu

Ms. Virginia B. Clark and Mr. Lane Taylor
 Mrs. Kay L. Clausen±
 Mr. and Mrs. J. Donald Cline Dale and Carole Cloyd
 Bruce E. Cobern
 Mr. and Mrs. Wilmer S. Cody^
 Melvin S. and Ryna G. Cohen±
 Mr. John K. Colgate, Jr.
 Mr. and Mrs. Daniel Collins^
 Ms. Ruth Boyer Compton◊
 William L. Conley±
 Mr. Thomas S. Cook
 Mr. Richard P. Cooley^
 Jeffrey A. Cooper, M.D.
 Mr. and Mrs. Arthur R. Crawford
 Patrisha C. Creevy, PAC
 Gretchen Smith Crow±
 Mr. Stephen J. Davidson
 Kathy Buckman Davis±
 Mr. Lawrence W. Davis
 Arthur and Isadora Dellheim Foundation±
 Mr. and Mrs. Bernard G. Dennis, Jr.
 Geert M. DePrest and Laura Travis-DePrest±
 Joseph Desloge
 Ms. Sherie Dick±
 Mr. Richard Ditton
 Dennis O. Dixon±
 Mr. and Mrs. Mitchell F. Dolin
 James and Barbara Donnell±
 Mrs. J.R. Donnelly
 Drs. George and Marie Doyle
 Mr. and Mrs. W. John Driscoll
 Mr. and Mrs. LeRoy Eakin III±
 The Eberly Family Charitable Trust◊
 Mr. and Mrs. Dean S. Edmonds◊
 Miss Babs Eisman±
 Dr. and Mrs. John Esswein±
 Mr. and Mrs. James G. Evans, Jr.±
 Mr. and Mrs. John A. Farrall
 Christine R. Faser
 Mrs. Hortense F. Feldblum
 C.J. Feldman
 Dr. and Mrs. Leslie H. and Barbara F. Fenton
 Dr. and Mrs. Gerald and Marlene Fischer
 Mary and Henry Flynt±
 Richard and Cynthia Foster
 Mr. and Mrs. Robert A. Fox
 Mr. and Mrs. Eric Potts Fraunfelter^
 Ms. Joyce Freedman±
 Mr. and Mrs. Stephen Friedman
 Mr. and Mrs. David Morgan Frost
 Charlotte Frye
 Mr. and Mrs. L.J. Futchik
 Mr. Tom Gaffny
 Dr. and Mrs. John H. Gardner
 Mr. Daniel Gilbert◊
 Karyn C. Gill and George McC. Gill, MD◊
 Dr. and Mrs. Clarence G. Glenn
 Mr. and Mrs. T. Keith Glennan III±
 Mr. Seth M. Glickenhau±
 Mr. Michael J. Glosserman
 Mr. Charles Goldsberry
 Agnes M. Grady
 Ms. Catharine Graton±
 Mrs. Mary J. Graves±
 Mr. and Mrs. John M. Green
 Mr. and Mrs. Michael D. Greenbaum
 Colonel Owen L. Greenblatt
 Steve Greenwald and Rochelle Alpert

Mrs. Alton B. Grimes±◊
 Mr. Robert G. Gutenstein
 Bruce Guthrie
 Cynthia Gutkowski and Stanley J. Gutkowski
 Mr. Jamie J. Gylden±
 David and Sandra Haas
 Mr. and Mrs. Bradley Hale
 Mr. and Mrs. Donald J. Hall
 Mr. Peter Hamel
 Ms. Eileen Hamilton
 Mrs. Gloria Shaw Hamilton±
 Mr. Daniel W. Harris
 Mr. and Mrs. Kelly R. Harris
 Mr. and Mrs. Marion Edwyn Harrison^
 Mrs. Parker T. Hart±
 Mr. and Mrs. Max E. Hartl±
 Mr. Paul W. Hartloff, Jr.±
 Dr. and Mrs. Herbert A. Hartman, Jr.
 Ms. Pam Hatfield
 Penny and Dean Hatten
 Victor and Takako Hauge
 Chatten Hayes
 Mona L. Hayford
 Mrs. Lucia M. Heard
 Ms. Jeffrey Henn
 Catherine W. Herman
 Mr. Paul Hertelendy^
 Ms. Ann Herzog and Mr. Bill Thompson
 I. Michael Heyman±
 Gloria Hidalgo±
 Ms. Mary Lou Hildreth
 Nancy Lee Hindman
 Nancy A. Hoffmann±
 Mr. and Mrs. Christian Hohenlohe
 Mr. and Mrs. Wallace F. Holladay±
 Mr. Robert M. Holmes
 Mrs. H. Earl Hoover±
 William Logan Hopkins◊
 Ms. Carol M. Huber
 Mr. and Mrs. David Hugel
 Peg and Dick Hulit±
 Mrs. Peter D. Humleker, Jr.±
 Mr. and Mrs. William H. Hunter±
 Deborah Huret and Frans Op den Kamp
 Joshua Icore
 Martha and Bronson Ingram Foundation
 John B. Ippolito and Diane M. Laird-Ippolito±
 Gregory and Jennifer Isaacs
 Ms. Jan Jackson
 Doctors Jay and Mary Anne Jackson
 Mrs. Loraine Atter Jacobs
 Mr. Edward C. Jalbert (Ned Jalbert Interior Design)
 Mrs. Samuel C. Johnson±
 Mrs. Edna Robinson Jones^
 Sheldon and Audrey Katz
 Mr. A. Sidney Katz, Esquire
 Richard and Elaine Kaufman◊
 Stephen C. Keeble and Karen Depew◊
 Ms. Anne B. Keiser and Dr. Douglas M. Lapp
 Mr. and Mrs. Kevin Kelley (Kevin and Lee Kelley Charitable Fund)
 Mr. and Mrs. David T. Kenney±
 Dr. Rebecca Kenyon
 Clark H. and Mary Jane Kilhefner
 Mr. Christopher Kinsey
 Ms. Dorothy Kirsch
 Ira and Joanne Kirshbaum
 Susan L. Klaus
 Steve and Cindy Klevickis

Lt. Col. and Mrs. William K. Konze◊
 Ms. Susan G. Kupper
 Mr. Wayne E. Kurcz±
 Mrs. James Spencer Lacock±
 Judge Marion Ladwig±
 Mr. and Mrs. Robert H. Lando±
 Mrs. Stephens J. Lange±
 Mr. and Mrs. Richard Langston
 Janet E. Lanman
 Ms. Jane C. Lea
 Mr. and Mrs. Kenneth R. Lehr
 The Honorable Marc E. Leland and Mrs. Leland (Marc E. Leland Foundation)^
 James H. and Constance A. Levi
 Ms. Canice Kelly Levin
 Dr. Jerrold Levy and Maria Arias±
 Mrs. Millard Lewis
 Ms. Susan Lindemuth
 Mr. David A. Lloyd, Jr.
 Shirley Loo±
 Ms. Mary T. Lott±
 Frank J. Lukowski±
 Mrs. Marian Lund
 Glen and Sally Lunde
 Mr. Sanford D. Lyons
 Dr. Hugh Mainzer and Ms. Jill Jarecki Mainzer◊
 Merriel Mandell
 Mr. and Mrs. Forrest E. Mars, Jr.±
 Ms. Jacqueline B. Mars±
 Major General Raymond E. Mason, Jr. and Margaret E. Mason±
 Pearl Bell and Colonel Billie G. Matheson◊
 Wayne and Tina Mathews
 Captain Tyler R. Matthew, SC USNR (Ret.)±
 Mr. James I. McAuliff
 Emmett and Miriam McCoy
 Stephen and Dawn Marie McCrary
 Clayton and Kathleen McCuiston
 Ms. Suzanne O. McDougal±
 Mr. and Mrs. John D. McLean±
 Richard T. McMurray
 Mrs. Garwin McNeilus
 Scott and Hella McVay^
 Mr. and Mrs. C.P. Mead±
 Mr. and Mrs. Gilbert D. Mead◊
 Ms. Helen Meloa±
 Mr. and Mrs. Eugene Mercy, Jr.±
 Mr. Richard M. Merriman±
 Mr. and Mrs. Dennis Miller
 Mr. Paul F. Miller, Jr. and Ella Warren Miller
 Donald and Sharon Mills
 Frances A. and Mike Mohr
 Mrs. E.P. Moore±
 Mr. and Mrs. Paul S. Morgan^
 Mr. Robert E. Mortensen
 Mr. Tad Mosel±
 Mr. John H. Moss±
 Mr. and Mrs. Kenneth F. Mountcastle±
 Doctors Gary L. and Carolyn R. Mueller
 Drs. James and Pamela Mulshine±
 Jeff and Tamara Munk
 Mrs. Don C. Musick±
 Dr. Charles B. Nam±
 David J. and Carolyn K. Nash
 Ms. Lynne Nelson
 Dick and Carol Netzer
 Ms. Linda Newkirk
 Ms. Noelle M. Nikipour
 David L. and Yoshie Nordling
 Mr. and Mrs. Merlin G. Nygren

O'Connor and Hewitt Foundation
 Mr. Michael D. O'Dell and Ms. Judith Grass
 Sakae K. and Jack H. Okuda
 William and Jean O'Neill±
 Orentreich Family Foundation
 John and Julie Parker±
 Robert S. Parker
 Michael L. Pate
 Mr. and Mrs. John W. Payson
 Mr. and Mrs. C.E. Peck±
 Mr. and Mrs. Stephen Perkins
 Susan Peters and Richard Lee±
 John L. Peterson±
 Frank and Janina Petschek Foundation
 Mr. Irving S. Phillips±
 Mr. Howard Phipps, Jr.
 Mr. and Mrs. James Pigott
 Mr. John Pitts, Sr.
 Carol Pochardt◊
 William and Lela Poms
 Mr. and Mrs. James E. Porter
 Mrs. Kay Porter
 Mr. Scott L. Probasco, Jr.
 David and Cheryl Purvis^
 Mr. William Raduchel
 Mr. J.M. Ramsay±
 Mrs. William Rapp±
 Mr. and Mrs. Norval L. Rasmussen
 Ms. Ruth A. Ray±
 Dr. Matthew J. Raymond
 Michael F. and Lazelle C. Reagan±
 E.G. Reinsch Foundation
 Ivy and Stanley Relkin
 Commander and Mrs. Lloyd L. Reynolds, Sr.
 Dr. Mark H.T. Ridinger
 Miss Jean Roberts±
 Ms. Nancy J. Robertson and Mr. Mark N. Cookingham±
 Toni and Arthur Rock
 John and Anne Rollins
 Mr. and Mrs. Francis C. Rooney, Jr.^
 David J. Rosenthal◊
 Mrs. Loretta Rosenthal
 Howard and Janice Rosser±
 Yvonne Roth±
 Maryà Rowan±
 Ms. Susan Lynch Ruddy^
 Mrs. Marcella L. Ruland
 Mr. Albert Sbar±
 Mr. Charles V. Schaefer III±
 Emily Malino Scheuer (S.H. and Helen R. Scheuer Family Foundation)
 Mr. and Mrs. Douglas R. Scheumann^
 Ms. Cathleen H. Schied
 Ms. Renae Schmidt±
 Catherine F. Scott◊
 Theodore and Kate Sedgwick
 Ms. Jean Sewell
 Mrs. David M. Shapiro
 Mrs. Selma R. Shapiro
 Shelby Shapiro◊
 Winslow T. Shearman
 Mr. and Mrs. J. Henry Sheffield◊
 Dr. Carol V. Sheldon and Dr. Roger E. Sheldon±
 Dr. G. Richard Shell
 Jon A. and Mary Shirley±
 Mr. Frank Shrontz±
 Shirley Phillips Sichel◊
 Mary Hudson Siciliano

Ms. Bernice Silverman
 Albert and Shirley Small
 Mr. and Mrs. Maynard Smith^
 Mr. Hugh D. Smith
 Joseph C. Smith±
 Kathy Daubert Smith^
 Miss Elissa Sommer
 Guenther and Siewchin Yong
 Sommer
 Irene Sorrough±
 Harriet & Edson Spencer Fund of
 the Minneapolis Foundation±^
 Mr. Gustav Staahl
 Mr. and Mrs. William C. Sterling, Jr.±
 Ms. Diane P. Stewart
 Shepard and Marlene Stone
 Mrs. Richard Stratton±
 Ms. Betsy Strohecker and
 Mr. Lee Klein
 John and Meredith Sullivan
 Ms. Patricia S. Swaney±
 Carolyn J.A. Swift
 Mary and Steven Swig±
 Mr. and Mrs. Kenneth D. Swingle
 Mrs. Elizabeth Taylor
 Mr. and Mrs. Richard F. Teerlink±
 Dr. and Mrs. F.W. Telling
 Ms. Pamela Templeton
 Joseph M. Tessmer
 Margaret Tevis
 Miss Isabel Thomson±
 Mr. and Mrs. John T. Tielking±
 Joseph and Toshiko Tompkins
 Charles E. and Lois J. Toomer
 Jack and Claire Tozier
 The Honorable and
 Mrs. Russell E. Train
 Helen Brice Trenckmann
 Dr. Harvey Trop±
 Bryan Troutman and Margaret
 Fischer
 Mrs. E.J. Tutag
 Joseph and Cynthia Urbano
 Mr. W. Van Veldhuisen
 Pablo and Debra Vicharelli
 Mrs. Pauline Vollmer±
 Colonel Harold W. Vorhies±[♠]
 Ms. Eileen Wade
 Mr. Raymond Waite±
 Dr. Robert W. Walton
 Mr. and Mrs. George E. Warner±
 Mrs. George F. Warner
 Mr. Le Roy Weber, Jr.±
 Mr. and Mrs. Richard H. Wherley
 Ms. Michelle D. Whisnant
 Mr. and Mrs. Ben White±
 Mrs. Donald W. White[♠]
 John K. White
 The Honorable John C.
 Whitehead±^
 Mr. Barry Widder
 Ambassador Howard and
 Rhonda Wilkins
 Pat and Harvey Wilmeth
 The Honorable Kendall W. Wilson
 Dr. and Mrs. Ralph Wilson, Jr.±
 Diana G. Wortham±
 Ms. Gay F. Wray^
 Ms. Alice Wroblewski
 Dr. and Mrs. Wallace C. Wu±
 Mrs. Charlotte Shirley Wyman±
 Dolores Yankauskas±
 Dr. Deborah L. Zeitler±
 Mary L. Zicarelli

SMITHSONIAN LEGACY SOCIETY

The Smithsonian Legacy Society honors those who carry on James Smithsonian's tradition by making legacy gifts to the Institution, such as bequests, charitable gift annuities, charitable remainder trusts, pooled income fund gifts, gifts of retirement plans, or other giving vehicles.

Anonymous
 Lucian Abernathy
 Ralph and Birdie Albers
 Stephen T. Alexieff
 Ms. Ruth Alliger
 William S. and Janice R. Anderson
 Mr. Charles F.W. Anderson
 Ms. Olga Anderson
 Ms. Rae R. Anderson
 Thelma, Jeffrey and Gregory Antal
 Ms. Beryl E. Arbit
 Mark B. Ardis
 Mrs. Ethel C. Armstrong
 Dr. and Mrs. Paul H. Arnaud, Jr.
 Mary W. and Rhodes F. Arnold
 Rudolph E. and Frances B. Atmus
 Mr. Robert J. Atwater
 Mrs. Jeane Austin
 Rose Marie Baab
 Mr. and Mrs. William R. Baecht
 William C. and Nellie N. Baker
 Lorraine Idriss Ball
 Mr. and Mrs. George L. Barquist
 LeRoy T. Baseman
 Betty Passmore Bass
 Stanley and Florence Baston
 Colonel Wyley Baxter
 Mr. Gary F. Beanblossom
 Mrs. Betty J. Benham
 Mr. William C. Benner
 Mr. and Mrs. Jason R. Beresford
 Jason C. and Susanna Berger
 Thomas H. Blakey
 August G. Blume
 Mr. and Mrs. Kenneth W. Boggs
 Dr. George P. and Bonnie M. Bogumill
 Mr. Richard L. Bolling
 Mark and Eileen Boone
 Susan K. Botula
 Joe K. and Gretchen B. Boyd
 Mr. James Brendel
 Col. and Mrs. Arthur L. Brooke
 Pulaski Broward, Jr.
 Mrs. James J. Brown
 Mrs. Lorraine E. Brown
 Harris and Diane Bruch
 Mr. and Mrs. James H. Bruns
 Mr. Warren F. Buxton, Ph.D., CDP
 Ms. Ernestine Calhoun
 Mr. and Mrs. J. Otis Carroll
 Michael W. Cassidy
 Mr. Eric Chandler
 Ms. Mary Claire Christensen
 LCDR Page B. Clagett, USNR (Ret.)
 Ms. Linda C. Clark
 Louis P. Clark
 Ms. Tanya Marie Clark
 Earl F. Clayton
 Dr. Karen Weaver Coleman
 Mrs. Mary Gendernalik Cooper
 Ms. Carol Ann Crotty
 Phillip and Betty Crum
 Mr. Hal J. Cunningham
 Miss Pauline R. Cushing

Mrs. Phyllis Daderio
 General and Mrs. J.R. Dailey
 Mr. Carmen J. D'Angelo
 Ms. Patricia Daniels
 Dr. and Mrs. Charles A. Davis
 Mrs. Elizabeth C. Davis
 James H. Davis
 Mrs. Aila G. Dawe
 Baroness Yvonne de Vilar
 Mr. Walter Deans
 Mrs. George O. DeGele
 Mr. and Mrs. A.C. Deichmiller
 Mr. Joe Del Valle
 Ms. Sue A. Delorme
 Ms. Patrice Kathleen Denman
 Ms. Elaine A. Dependahl
 Kenneth G. and Sherry L. Dietz
 Dennis O. Dixon
 Mr. and Mrs. James C. Dixon
 Ralph and Patricia Dixon
 Alan and Elizabeth Duckett
 Dr. Harold A. Dundee
 Mr. and Mrs. William C. Dutton
 Robert L. Dwight
 Mrs. Ruth F. Effron
 George Elliott
 Dorothy H. Ellis
 Valerie A. Emerson
 Mrs. Joan Engberg
 Ronald W. and Sophie M. Enger
 Elizabeth Engstrom
 Mr. Richard Evans
 Ken Ferrara
 Miss Grace C. Ferrill
 Mr. and Mrs. Fred Feuille
 Mr. and Mrs. Dale E. Fincke
 Mrs. Helen Flanagan
 Mr. Fred R. Fonck
 Ms. Norma L. Forbes
 Mr. Ronald J. Foulis
 Al and Marion Friedlander
 Ms. Patricia K. Frontz
 Gudrun Fruehling
 Mr. Melvin E. Fryer
 Dr. Martin A. Funk and
 Mr. Eugene S. Zimmer
 Mr. Oscar Galeno
 Mrs. H. Clay Gardenhire
 Mr. Arthur W. Gardner
 Aileen M. Garrett
 Mr. David E. Garrett
 Jane W. Gaston
 Dr. Albert Gelderman and
 Dr. Martha Gelderman
 Doris and Henry R. George
 Ms. Iris J. Gibson
 Mr. and Mrs. Douglas B. Gilbert
 Mr. Gilbert W. Glass
 Mr. Irving P. Golden
 Mr. Charles Goldsberry
 Ms. Margaret K. Goldsmith
 Mrs. Renee Goodstein
 Ms. Margaret J. Grasston
 Mrs. Taylor P. Grasty
 Ralph Greenhouse
 Mrs. Ruth Gresham
 Lt. Col. and Mrs. Milton R. Gunther,
 USAF (Ret.)
 Valerie J. and D. Wilson Gyton
 Mrs. Gloria Shaw Hamilton
 Ms. Josephine B. Hammond
 Mr. Ralph Hansen
 Mrs. Marthajane Hapke

Mrs. Nancy M. Harlan
 Mr. and Mrs. William R. Harmon
 Mr. Christie G. Harris
 Ms. Margery F. Harris
 Ms. Carrie R. Harrison
 Ms. D.L. Hasse
 Roger D. and Martha E.V. Hathaway
 Mr. William C. Hauber
 Ms. Judy Hauser
 Mr. Geoffrey F. Hayes
 Wilbert A. Heinz
 Mr. Richard D. Henderson
 Miss Mildred Henninger
 Lloyd E. Herman
 Mr. and Mrs. Carl D. Herold
 Mr. and Mrs. John E. Herzog
 Dr. and Mrs. David C. Hess
 Mr. Jeff Hill
 Frank and Lisina Hoch
 Edward J. and Ruth W. Hodge
 Miss K.T. Hoffacker
 Ruth S. Holmberg
 Robert W. Holmes
 Ms. Hanna Lore Hombordy
 Ray and Valerie Hopkins
 William L. Hopkins and
 Richard B. Anderson
 Catherine Marjorie Horne
 Mrs. Lee Houchins
 John and Anne Howat
 Mrs. Edgar McPherson Howell
 John Hoyda
 John R. Huggard
 Mr. Stuart M. Hughes
 Captain Woodie W. Humburg
 Mr. Thomas L. Humphrey
 Dr. and Mrs. James C. Hunt
 Mr. and Mrs. Milton M. Hyatt
 Ms. Virginia Jaeger
 Mr. and Mrs. David H. Jenkins
 Dennis R. Jenkins
 Lieutenant Colonel Robert B.
 Jenkins, USAF, Retired
 Mr. Douglas B. Johnson
 Ms. Janice Mary Johnson
 Mr. Woodrow C. Johnson
 Mr. Roger R.W. Johnston
 Mr. and Mrs. Stanton Jue
 Mr. Nelson Kading
 Mr. Charles P. Kaiser
 Stephen and Linda Kamen
 Mr. and Mrs. Alfred Kanwischer
 Ms. Judy Kaselow
 Miss Rajinder Kaur Keith
 Mr. John B. Kendrick
 Ms. Kelly A. Kendrick-Bailey
 Ms. Marjorie C. Kennedy
 Frances D. Kerr
 Jack L. Keyes
 Ms. Moselle Kimbler
 Elise H. Knight
 John and Mary Lu Koening
 Richard and Marilyn Kolesar
 Lt. Col. and Mrs. William Karl Konze
 William J. Kramer
 Mr. and Mrs. Richard I. Kuehl
 Richard Kurin
 Margo Kurtz
 Ms. Lee L. Kush
 Dr. Geraldine E. La Rocque
 Mrs. James Spencer Lacock
 Ms. Patricia A. Laird
 Mr. Travis S. Lamberton

Mr. and Mrs. Robert H. Lando
 Gilbert H. Lang, M.D.
 Mr. and Mrs. Arden Lanham
 Jane Lanham
 Philip Lathrap
 Cynthia Muss Lawrence
 Mrs. Deane C. Laycock
 M/SGT. Lionel L. Leblanc
 Mr. and Mrs. Erich Lechpammer
 Mrs. Rose Bente Lee and Admiral
 William M. Ostapenko, USN (Ret.)
 Mr. Bruce Leighty
 Loetta Lewis
 Theodore W. and
 Barbara Ann Libbey
 Daniel M. Linguiti and Teri A. Smurl
 Ms. Eleanor L. Linkous
 Ms. Nina Liu
 Mr. and Mrs. Thomas L. Long
 Shirley Loo
 Mr. and Mrs. Donald S. Lopez
 Anton C. Love
 Dr. and Mrs. Burton N. Lowe
 Frank J. Lukowski
 Ms. Barbara M. Macknick
 Mr. and Mrs. Charles Maluzzi
 Mr. Clyde Marr
 Mr. David J. Mason
 Mr. John L. Mason
 Dr. Bella J. May
 Mr. Ronald W. McCain
 Robert and Mary McCallum
 Ms. June W. McCarron
 Mr. and Mrs. Brandon McCrary
 Mr. and Mrs. Richard B. McCrary
 Mr. and Mrs. Lowell McDysan
 Miss Minnie Belle McIntosh
 Ms. Lowen McKay
 Colonel Billy McLeod
 William and Jeanne L. McNamara
 Mr. and Mrs. Allen McReynolds, Jr.
 Mrs. Nora L. Melville
 Mrs. Leon A. Mensing
 Mrs. Ruth Meyer
 Mr. Rodney R. Midlam
 Mr. and Mrs. Carl Mikuletzky
 Jerry Miller
 Mrs. Melissa L. Mills
 Mr. George Mitchell
 Mr. Emmet V. Mittlebeeler
 Mr. and Mrs. Fred Montanye
 Mr. and Mrs. Charles H. Moore
 Mrs. Jane R. Moore
 Mr. M. David Morgan
 Mr. Arthur Mucklow
 Mr. and Mrs. Roger K. Myers
 Lt. Col. Frank D. Neill, Jr. (Ret.)
 David A. Neiss
 Ms. Caroline K. Nelson
 Ms. Arlene R. Newby
 Ms. Myrtle S. Nord
 Mr. Homer C. Ogles
 Ms. Mildred S. Onion
 Mr. Robert A. Ossege
 Don and Lynn Owen
 Mr. Patrick H. Packard
 Mrs. Irma Padgett-Haaland
 Mr. Richard S. Paegelow
 Mrs. Vivian Paegelow
 Mr. Wayne Parsons
 Mr. Robert Pastorino
 John R. Patterson, Jr.
 Mr. Paul L. Peck
 Mr. and Mrs. James E. Pehta
 Mr. and Mrs. Stanley Pendlebury

Ms. Nancy Phillips
 Ms. Thelma B. Player
 Mrs. Ann M. Potter
 Bob and Janice Pound
 Mr. and Mrs. Anco L. Prak
 Mr. Delbert L. Price
 Mrs. Lakhbir Purewal
 Ms. Martha Puricelli
 Mr. and Mrs. Thomas Stanley Purvinis
 David and Cheryl Purvis
 Mrs. Frank K. Rabbitt
 Mrs. William Rader
 Mr. and Mrs. Paul Rafaj
 Frederick L. Ranck
 Francis H. Rasmus, Jr.
 Mr. and Mrs. Galen B. Rathbun
 Ms. Sanae Iida Reeves
 Mr. Donald L. Reinking
 Mrs. Barbara Reno
 Jon and Emilee Reynolds
 Mr. and Mrs. Robert A. Rice
 Colonel and Mrs. Robert F. Rick
 George W. and Margaret P. Riesz
 Mr. Robert E. Ritter
 Ms. Eleanor A. Robb
 Ms. Dorothy M. Robins
 Dr. Ruth A. Roland
 Mr. Norman Roscilo
 Dr. Harry Rosenthal
 Nell M. Rothschild
 Mr. and Mrs. John Ruby
 Owen F. Ruggles
 Ms. Sally D. Ryan
 Edward H. Sachtleben
 Mr. and Mrs. Charles Salter
 Lieutenant Colonel Joseph R. Santa
 Barbara
 Mr. Dwight D. Saunders
 Lloyd G. and Betty A. Schermer
 Mr. William Schlitz
 Norma Schmid
 Ms. Marsha K. Schmidt
 Ms. Deborah Schneide
 Robert L. and Mary T. Schneider
 Mr. George Schnitzer
 Ms. Sharon Scott
 Elinor Scotte-Virgona
 Mr. and Mrs. William Seely
 Edwin N. Seiler
 Mrs. Norma Gudin Shaw
 Ms. Shari Diane Shaw
 Winslow T. Shearman
 Mr. and Mrs. Robert S. Sherman
 Dr. Gerry Shigekawa
 Mrs. William H. Shopp
 Shirley Phillips Sichel
 Mrs. Joan S. Siedenburg
 Kathleen E. Sier
 Ms. Anne Copeland Silberman
 Ms. Mary Bise Simon
 Ms. Mary F. Simons
 Mr. James C. Small and
 Mr. John A. Fry
 Dr. Barbara J. Smith
 Kathy Daubert Smith
 Mr. and Mrs. Lee Smith
 Denny G. Snyder
 Mrs. Margaret Sokol
 Mr. and Mrs. Stephen K. Soldoff
 Guenther and Siewchin Yong Sommer
 Irene Sorrough
 Dr. Harry Wayne Springfield
 Ms. Carolyn N. Stafford
 Paul and Janet Stahlhuth
 Mrs. Ginger Winters Stallings

Mr. James Starkey
 Ms. Eugenia L. Staszewski
 Ms. Wanda B. Staszewski
 Fred L. and Ruth B. Steele
 Ms. Sandra Sterling
 Judith Stoeri
 Stanley Y. and Janet I. Stoker
 Kevin B. Stone
 Mary Margaret and Richard Storey
 Mr. and Mrs. Frederick L. Streckewald
 Robert and Gail Strong
 Joseph and Elizabeth Suarez
 Mrs. Rachel A. Syslo
 Ralph Edward Tamper
 Cuyler and Grace Taylor
 George D. and Mary Augusta Thomas
 Dr. and Mrs. F. Christian Thompson
 Ms. Johanna W. Thompson
 John and Ellen Thompson
 Mrs. Diane D. Tobin
 Mr. David E. Todd
 Mr. and Mrs. W. Carroll Tornroth
 Anna Mary Tossey
 Mr. and Mrs. David Tozer
 Ms. Barbara V. Tufts
 Ms. Marjorie Underhill
 Ms. Selena M. Updegraff
 Fred G. and Lelia R. Valdivia
 Dr. Lorna VanderZanden
 Ms. Carol Vangelos
 John Vernet
 Jean and Davis H. von Wittenburg
 N.O. Wagenschein
 Patty Wagstaff
 Mr. Raymond Waite
 Bettye S. Walker
 Ms. Esperanza R. Walker
 Mrs. Peggy Wall
 Miss Catherine M. Walsh
 Mrs. Elizabeth Walther
 Dr. and Mrs. Richard Ward
 DeVer Warner
 Mrs. Mary Watts
 Ms. Susan G. Waxter
 Charles Weingartner
 Mr. and Mrs. Eric W. Weinmann
 Mr. Paul E. Wellington
 Mr. Walt Wells
 Dale (Billie) L. Welton
 Dr. J.H. Werner
 Mrs. Harriet K. Westcott
 Craig and Catherine Weston
 Dr. George B. Whately
 Ms. Cecel F. White
 Mrs. Donald W. White
 Mr. Hollin J. Whitten
 Ms. Vivian Wilder
 TSgt. James E. Wildey, USAF (Ret.)
 Mr. Leo J. Witala
 Mrs. Elizabeth B. Wood
 Gerald L. Wood
 ADCS Scott B. Wood, USN, Retired
 Mr. and Mrs. Daniel W. Yohannes
 Mr. and Mrs. Robert Zapart
 Mr. and Mrs. Robert S. Zelenka
 Mr. Kenneth M. Zemrowski
 Dr. P. Joseph Zharn
 John and Sherry Ziegler
 Mrs. Nancy Behrend Zirkle
 Mr. and Mrs. Paul B. Zygielbaum

BEQUESTS

We remember with appreciation the following generous donors whose gifts through bequests from their estates were received this year.

Dorothy B. Arnold
 Aldene A. Barrington
 Laura W. Burr
 Joseph R. Cappucci
 John Hadley Cox
 Mr. and Mrs. Joseph F. Cullman, 3rd
 Virginia F. Harrison Elliott
 June M. Fontanier
 Martha Parks Forrest
 James E. Gysin
 Hattie Lyle Hall
 John F. Harkins, Jr.
 Leroy H. Harvey
 Donald B. Hirsch
 Grant W. Howell
 Robert C. Johnson
 Rose C. Kramer
 C. Lois Kriebel
 Rudolph Kunda
 Frances Leventritt
 Bonnijane Mehlhop
 Mary B. Patsuris
 Eve E. Sheppard
 William H. Shopp
 Caroline T. Simmons
 Louise Snyder
 Bernard Stadiem
 Kenneth R. Waughop

MEMORIAL AND COMMEMORATIVE GIFTS

The following were so honored by their families, friends, and other donors to the Smithsonian.

Charles M. Diker
 Mary Engen
 Meg Fabelina
 Lynda Fisher
 Barbara Greenberg Fleischman
 Harvey M. Krueger
 Goldie Kurtin
 Jane Durning LaPin
 Gwen Leighty
 Cecelia Looking Horse
 Peggy Mason
 Rajendra C. Nigam
 Harrison E. Radford
 A. Stanley Rand
 Ned Rifkin
 Abigail Rose
 John P. Suozzo
 Steven F. Udvar-Hazy
 Olga M. Viso
 Franc Wertheimer
 Josephine Wtulich

Smithsonian National Board

AMBASSADORS FOR THE SMITHSONIAN

SMITHSONIAN NATIONAL BOARD members serve as ambassadors for the Institution, advise the Secretary and other Smithsonian leaders, and generously contribute philanthropic support.

IN 2006, THE BOARD ADVANCED the work of the Smithsonian locally, nationally, and abroad. Members broadened the Smithsonian's constituency in their hometowns by hosting receptions for the Secretary and book-tour events for Richard Kurin, Director of the Center for Folklife and Cultural Heritage, whose new book, *Hope Diamond*, tells the story of the Smithsonian's famous gem. A Science Committee formed this year furthers the goals of the Science Strategic Plan, and an agreement facilitated by the Education Committee brings nationwide support to Smithsonian educational efforts from the Council of Chief State School Officers. Traveling to India in March, Board study tour participants met government, science, and cultural leaders and represented the Institution. The Board continued its long-standing tradition of outstanding philanthropic leadership with contributions of more than \$13.3 million. The Smithsonian gratefully acknowledges the dedicated leadership and support of the current, honorary, and alumni members of the Smithsonian National Board.



2006 SMITHSONIAN NATIONAL BOARD

Patricia Frost
Chair

L. Hardwick Caldwell III
Vice Chair, 2007 Chair-elect

Jane B. Eisner
Vice Chair

Peter H. Lunder
2007 Vice Chair-elect

Elizabeth S. MacMillan
Vice Chair

Claudia R. Allen
Judy Hart Angelo*
Barbara M. Barrett*
Kenneth E. Behring
Peggy P. Burnet
Richard O. Campbell
Pete Claussen
Wilmer S. Cody
Margaret Collins (ex officio)
James F. Dicke II
George A. Didden III
Robert G. Donnelley
Sakurako D. Fisher
Bradford M. Freeman
John French III*
Michael R. Haverty
Richard W. Herbst
John E. Herzog
Irene Y. Hirano
Steven G. Hoch
Judy S. Huret
Richard D. Kinder
Dorothy G. Lemelson
Jane Lipton*
Frank Martucci
Edgar M. Masinter
Amy S. McCombs

Chris E. McNeil, Jr.
Augustus C. Miller
Howard P. Milstein
Charles H. Moore, Jr.
Susan R. Moseley
Paul Neely*
Morris W. Offit*
Russell E. Palmer, Jr.*
Paul L. Peck
S. Davis Phillips
Judy Lynn Prince (ex officio)*
William M. Ragland, Jr.*
Ronald A. Rosenfeld*
Susan Lynch Ruddy
Theiline Pigott Scheumann*
Richard T. Schlosberg III
Rodney E. Slater
Helen B. Spaulding
Beatrice R. Taylor
Douglas C. Walker*
Mallory Walker*

HONORARY MEMBERS

Robert McC. Adams
William S. Anderson
Max N. Berry
Richard P. Cooley
Frank A. Daniels, Jr.
Charles D. Dickey, Jr.
Alfred C. Glassell, Jr.
I. Michael Heyman
James M. Kemper, Jr.
George C. McGhee
Sandra D. O'Connor
Francis C. Rooney, Jr.
Wilbur L. Ross, Jr.
Lloyd G. Schermer
Frank A. Weil
Gay F. Wray

*Term began September 2006

Leadership of the 2006 Smithsonian National Board: from left, Jane B. Eisner, Vice Chair; Patricia Frost, Chair; L. Hardwick Caldwell III, Vice Chair and 2007 Chair-elect; Elizabeth S. MacMillan, Vice Chair. Not shown: Peter H. Lunder, 2007 Vice Chair-elect.

Distinguished Benefactors

RECOGNIZING MAJOR SUPPORTERS

THE DISTINGUISHED BENEFACTORS ROOM in the Smithsonian Institution Castle honors the Institution's most generous contributors, individuals whose gifts total \$1 million or more and foundations and corporations that have made one-time gifts of the same amount.

Anonymous
3M
AAA
Charles Francis Adams
A&E Television Networks
Aflac Incorporated
The Aga Khan Trust for Culture
Airbus
Alcoa
American Airlines
American Chemical Society
American International Group, Inc. (AIG)
American Public Transportation Association
American Road & Transportation Builders Association
AMS Foundation for the Arts, Sciences and Humanities
Analytical Graphics, Inc.
Anheuser-Busch Foundation
Apple Computer, Inc.
Art Research Foundation
Association of American Railroads
Herbert and Evelyn Axelrod
Bank of America
Laura Barney
Kenneth E. Behring Family
Max N. and Heidi L. Berry
Barbara and James Block
Mary and Leigh B. Block
Winton M. "Red" Blount
The Boeing Company
Bombardier
Mrs. Virginia O. Boochever
F. Otis Booth, Jr.
Agnes C. Bourne
The Brown Foundation, Inc. of Houston
Hildegard Bruck and Alfred Egerter
Dr. Peter Buck
The Emil Buehler Trust
The Burkle Family Foundation
William A. Burleson
Burroughs Wellcome Fund
The Morris and Gwendolyn Cafritz Foundation
Hacker and Kitty Caldwell
The E. Rhodes & Leona B. Carpenter Foundation
Cessna Aircraft Company
CIGNA
The Coca-Cola Company
Dr. and Mrs. David A. Cofrin
The Ryna and Melvin Cohen Family Foundation
The Comer Foundation
The Commonwealth of Virginia
Joseph and Robert Cornell Memorial Foundation
Mr. and Mrs. Joseph F. Cullman, 3rd
The Daniels Fund
Richard Darman
Florence Coulson Davis
Luisita L. and Franz H. Denghausen

Bern Dibner
Jim and Janet Dicke
Valerie and Charles Diker
Discover Financial Services, Inc.
Discovery Communications, Inc.
Patricia C. Dodge
Donald J. and Helen D. Douglass
DuPont
The Eberly Family Charitable Trust
EDS
Charles H. Ettl
Mr. and Mrs. Thomas M. Evans
ExxonMobil
FedEx Corporation
Nancy B. and Hart Fessenden
Barbara G. Fleischman
Martha Parks Forrest
The Ford Foundation
Ford Motor Company Fund
Charles Lang Freer
Patricia and Phillip Frost
Fujifilm
Norma Lee and Morton Fungler
General Motors Corporation
The Glenstone Foundation, Mitchell P. Rales, Founder
Goldman, Sachs & Co.
Arvin Gottlieb
Katharine Graham
The George Gund Foundation
George Gund III and Lara Lee
James E. Gysin
Karl H. Hagen
Enid A. Haupt
William Randolph Hearst Foundation
Herbert Waide Hemphill, Jr.
Janine and J. Tomilson Hill
Conrad N. Hilton Foundation
Ikuo Hirayama
Joseph Hirshhorn
Frank and Lisina Hoch
Holenia Trust
Ruth S. and A. William Holmberg
Janet Annenberg Hooker
Grant W. Howell
IBM Corporation
Intel Corporation
International Lease Finance Corporation
Christian A. Johnson Endeavor Foundation
The JSM Charitable Trust, James S. McDonnell III, John F. McDonnell
Linda Lichtenberg Kaplan
The W.M. Keck Foundation
Herb Kelleher
W.K. Kellogg Foundation
R. Crosby Kemper
William R. Kenan, Jr. Charitable Trust
John S. and James L. Knight Foundation
David H. Koch
Robert and Arlene Kogod
The Korea Foundation
Kraft Foods
The Kresge Foundation

Constance and Harvey Krueger
B.Y. Lam Foundation
Lannan Foundation
Robert Lehrman
The Lemelson Foundation
Thelma and Melvin Lenkin
Barbara Riley Levin
Edith S. and Arthur J. Levin
Levinson/LaBrosse Family
Lockheed Martin
The Henry Luce Foundation
Peter and Paula Lunder
The John D. and Catherine T. MacArthur Foundation
Elizabeth and Whitney MacMillan
Barbara and Morton Mandel
Nancy and Edwin Marks
Alice S. Marriott Lifetime Trust/J. Willard and Alice S. Marriott Foundation
John and Adrienne Mars
The Mashantucket Pequot Tribal Nation
Masterfoods USA
Nan Tucker McEvoy
MCI WorldCom
The Andrew W. Mellon Foundation
Sidney Mobell
The Mohegan Tribe of Indians of Connecticut
The Claude Moore Charitable Foundation
Morgan Stanley
Lester S. and Enid W. Morse
Susan and Furman Moseley
Robert O. Muller
NAMM - International Music Products Association
National Asphalt Pavement Association
National Association of Realtors
National Business Aviation Association, Inc.
National Mining Association
The National Stone, Sand & Gravel Association
H. Duane Nelson
The Nippon Foundation
Nissan North America, Inc.
Nordic Council of Ministers
Northrop Grumman Corporation
Occidental Chemical Corporation
Carroll and Nancy Fields O'Connor
Oneida Indian Nation (New York)
Yoko Ono
Orkin Exterminating Company, Inc.
Bernard and Barbro Osher
The David and Lucile Packard Foundation
Paul Peck
Peterson Family Foundation
The Pew Charitable Trusts
Pioneer Electronics (USA), Inc.
Pitney Bowes Inc.
Robert W. Pittman
Polo Ralph Lauren Corporation

The Principal Financial Group
The Rasmuson Foundation
Raytheon Company
Reve Foundation
Donald W. Reynolds Foundation
Robinson Helicopter Company
Sara Roby Foundation
David Rockefeller
Rockefeller Foundation
Rolex
Samuel G. Rose and Julie Walters
Susan and Elihu Rose
Arthur Ross Foundation
Rodris Roth
Arthur M. Sackler
Arthur M. Sackler Foundation
Dr. Elizabeth Sackler/The Arthur M. Sackler Foundation
Else Sackler
John and Joy Safer
Roger and Victoria Sant
The Kingdom of Saudi Arabia
Mr. and Mrs. B. Francis Saul II
S.C. Johnson & Son, Inc.
Lloyd G. and Betty A. Schermer
Nina and Ivan Selin
Seneca Nation of Indians
Frank B. Sherry
Shirley Phillips Sichel
Paul Singer
Sketch Foundation
Alfred P. Sloan Foundation
Albert and Shirley Small
Robert H. and Clarice Smith
Guenther and Siewchin Yong Sommer
The Starr Foundation
State Farm Companies Foundation
Margaret and Terry Stent
Terra Foundation for American Art
Thaw Charitable Trust
The Tiffany & Co. Foundation
Timex Corporation
TRW
TWA
Earl S. Tupper
Turner Foundation, Inc.
Mr. and Mrs. Steven F. Udvar-Hazy
Richard O. Ullman Family Foundation
United States Mint
United States Postal Service
UPS
The Upton Trust
Anne van Biema
Teodoro Vidal
VOLVO
Lila Wallace-Reader's Digest Fund
The Walt Disney Company
Alexander and Annie B. Wetmore
Norman and Catherine Willcox
Harry Winston Research Foundation, Inc.
Ronald Winston
Xerox Corporation

Ways to Give

HELPING US TO FULFILL THE MISSION

THE SMITHSONIAN has the power to educate, inspire, and bring us together. Each year, gifts from friends and supporters help meet the enormous costs of providing Smithsonian programs and services, year-round and free of charge, to millions.

TODAY'S Smithsonian is:

- The world's largest provider of museum experiences, now engaged in transforming its museums and exhibitions into the best there are;
- A world leader in science and research whose experts study life's origins, probe the boundaries of space, and help steward our fragile Earth;
- A partner in education that reaches millions of Americans where they live and shares its collections and learning through Affiliate museums, traveling exhibitions, and the Internet;
- A national treasure holding in trust for every citizen America's most cherished treasures.

Never before has your gift been more valued or made so great an impact. We rely on the thoughtful and generous support of individuals, organizations, and corporations. Please contact us to learn more about how you can support America's museum.

Give Online

Giving online is fast, easy, and secure. Gifts of any amount may be made and an e-mail confirmation is provided.
www.supportsmithsonian.org

Annual Memberships

Membership in the pan-institutional Contributing Membership provides support to the Smithsonian and a wide variety of events and benefits to those who join. Annual membership levels range from \$75 to \$10,000.
(800) 931-3226
membership@si.edu
www.smithsonianmembership.com

Many individual Smithsonian museums and research centers offer memberships. To learn more about them, go to the Smithsonian's main Web site, www.smithsonian.org, and click on the membership pages of the museum or research center that interests you.

Corporate Memberships and Sponsorships

Corporations play a vital philanthropic role in today's Smithsonian. We welcome corporate relationships and offer membership through the Smithsonian Corporate Membership Program.
(202) 633-5052
corpmembers@si.edu
www.si.edu/corporate

Planned Giving

There are many ways to make a planned gift that benefits the Smithsonian. Those who include the Smithsonian in their estate plans and notify us are eligible for membership in the Smithsonian Legacy Society and its events.
(888) 419-7584
legacy@si.edu
www.si.edu/giving/plangiv.htm

For Further Information

For more information about how you can support the Smithsonian and its dynamic mission, "for the increase and diffusion of knowledge," please contact:

Virginia B. Clark
Director, External Affairs
1000 Jefferson Drive S.W.
4th Floor
MRC 027, P.O. Box 37012
Washington, D.C. 20013-7012
(202) 633-4300
giving@si.edu
www.si.edu/giving

BOARD OF REGENTS

The Smithsonian Institution is the world's largest museum and research complex, with 19 museums and galleries and the National Zoo, as well as a number of research centers around the world. It was created by an act of Congress in 1846 in accordance with the terms of the will of James Smithson of England, who in 1826 bequeathed his property to the United States of America "to found at Washington, under the name of the Smithsonian Institution, an establishment for the increase and diffusion of knowledge." After receiving the property and accepting the trust, Congress vested responsibility for administering the trust in the Smithsonian Board of Regents.

The Chief Justice of the United States, *ex officio*, *Chancellor*

Richard B. Cheney
Vice President of the United States, ex officio

Thad Cochran
Senator from Mississippi

Bill Frist, M.D.
Senator from Tennessee

Patrick J. Leahy
Senator from Vermont

Xavier Becerra
Representative from California

Sam Johnson
Representative from Texas

Ralph Regula
Representative from Ohio

Eli Broad
Citizen of California

Anne d'Harnoncourt
Citizen of Pennsylvania

Phillip Frost
Citizen of Florida

Shirley Ann Jackson
Citizen of New York

Robert P. Kogod
Citizen of Washington, D.C.

Walter E. Massey
Citizen of Georgia

Roger W. Sant
Citizen of Washington, D.C.

Alan G. Spoon
Citizen of Massachusetts

Patricia Q. Stonesifer
Citizen of Washington state

ADMINISTRATION

Lawrence M. Small
Secretary

Sheila P. Burke
Deputy Secretary and Chief Operating Officer

Gary M. Beer
Chief Executive Officer, Smithsonian Business Ventures

David L. Evans
Under Secretary for Science

Ned Rifkin
Under Secretary for Art

William W. Brubaker
Director, Facilities Engineering and Operations

Virginia B. Clark
Director, External Affairs

James M. Hobbins
Executive Assistant to the Secretary

John E. Huerta
General Counsel

Evelyn S. Lieberman
Director, Communications and Public Affairs

Alice C. Maroni
Chief Financial Officer

Era L. Marshall
Director, Equal Employment and Minority Affairs

Carole M.P. Neves
Director, Policy and Analysis

Nell Payne
Director, Government Relations

A. Sprightley Ryan
Acting Inspector General

Ann Speyer
Acting Chief Information Officer

To contact staff members listed above, call (202) 633-1000 for addresses and telephone numbers.

MUSEUMS

Ten Smithsonian museums and galleries are located on the National Mall between the Washington Monument and the U.S. Capitol. Six other museums and the Zoo are elsewhere in the Washington metropolitan area. The Cooper-Hewitt, National Design Museum and the National Museum of the American Indian's George Gustav Heye Center are located in New York City. The newest museum to be established within the Smithsonian is the National Museum of African American History and Culture, which will be located on the National Mall in Washington, D.C. The Arts and Industries Building is closed in preparation for renovation.

ANACOSTIA COMMUNITY MUSEUM
Camille Giraud Akeju, Director
MRC 520, P.O. Box 37012
Washington, D.C. 20013-7012
(202) 633-4839

ARTHUR M. SACKLER GALLERY AND FREER GALLERY OF ART
Julian Raby, Director
MRC 707, P.O. Box 37012
Washington, D.C. 20013-7012
(202) 633-0456

COOPER-HEWITT, NATIONAL DESIGN MUSEUM
Paul Warwick Thompson, Director
2 East 91st St.
New York, N.Y. 10128-0669
(212) 849-8370

HIRSHHORN MUSEUM AND SCULPTURE GARDEN
Olga M. Viso, Director
MRC 350, P.O. Box 37012
Washington, D.C. 20013-7012
(202) 633-2824

NATIONAL AIR AND SPACE MUSEUM AND THE STEVEN F. UDVAR-HAZY CENTER
Gen. John R. Dailey (USMC, Ret.), Director
MRC 310, P.O. Box 37012
Washington, D.C. 20013-7012
(202) 633-2350

NATIONAL MUSEUM OF AFRICAN AMERICAN HISTORY AND CULTURE
Lonnie G. Bunch, Director
MRC 509, P.O. Box 37012
Washington, D.C. 20013-7012
(202) 633-4763

NATIONAL MUSEUM OF AFRICAN ART
Sharon F. Patton, Director
MRC 708, P.O. Box 37012
Washington, D.C. 20013-7012
(202) 633-4610

NATIONAL MUSEUM OF AMERICAN HISTORY, KENNETH E. BEHRING CENTER
Brent D. Glass, Director
MRC 622, P.O. Box 37012
Washington, D.C. 20013-7012
(202) 633-3435

NATIONAL MUSEUM OF THE AMERICAN INDIAN AND THE GEORGE GUSTAV HEYE CENTER
W. Richard West, Jr., Director
MRC 590, P.O. Box 37012
Washington, D.C. 20013-7012
(202) 633-6700

NATIONAL MUSEUM OF NATURAL HISTORY
Cristián K. Samper, Director
MRC 106, P.O. Box 37012
Washington, D.C. 20013-7012
(202) 633-2664

NATIONAL PORTRAIT GALLERY
Marc J. Pachter, Director
MRC 923, P.O. Box 37012
Washington, D.C. 20013-7012
(202) 275-1740

NATIONAL POSTAL MUSEUM
Allen R. Kane, Director
MRC 570, P.O. Box 37012
Washington, D.C. 20013-7012
(202) 633-5500

NATIONAL ZOOLOGICAL PARK
John M. Berry, Director
3000 Block of Connecticut Ave. N.W.
Washington, D.C. 20008
(202) 633-4442

SMITHSONIAN AMERICAN ART MUSEUM AND THE RENWICK GALLERY
Elizabeth Broun, Director
MRC 970, P.O. Box 37012
Washington, D.C. 20013-7012
(202) 275-1515

RESEARCH CENTERS

ARCHIVES OF AMERICAN ART
John W. Smith, Director
MRC 937, P.O. Box 37012
Washington, D.C. 20013-7012
(202) 275-1874

MUSEUM CONSERVATION
INSTITUTE
Robert J. Koestler, Director
4120 Silver Hill Rd.
Suitland, Md. 20746-2863
(301) 238-1205

SMITHSONIAN ASTROPHYSICAL
OBSERVATORY
Charles R. Alcock, Director
60 Garden St.
Cambridge, Mass. 02138
(617) 495-7100

SMITHSONIAN ENVIRONMENTAL
RESEARCH CENTER
Anson H. Hines, Jr., Director
P.O. Box 28
Edgewater, Md. 21037
(443) 482-2208

SMITHSONIAN INSTITUTION
ARCHIVES
Thomas F. Soapes, Acting Director
MRC 507, P.O. Box 37012
Washington, D.C. 20013-7012
(202) 633-5933

SMITHSONIAN INSTITUTION
LIBRARIES
Nancy E. Gwinn, Director
MRC 154, P.O. Box 37012
Washington, D.C. 20013-7012
(202) 633-2240

SMITHSONIAN MARINE STATION
AT FORT PIERCE
Valerie J. Paul, Director
701 Seaway Drive
Fort Pierce, Fla. 34949-3140
(772) 465-6630

SMITHSONIAN TROPICAL RESEARCH
INSTITUTE (PANAMA)
Ira Rubinoff, Director
Unit 0948 APO AA 34002-0948
011 (507) 212-8110

PHOTO CAPTIONS:

Cover: Reynolds Center Great Hall

Opposite "From the Secretary," clockwise from upper left: *Rhus nigricans* fossil leaf; Reynolds Center Great Hall and dome; *Virgin Enthroned*, 1891, by Abbott Handerson Thayer; *Bessie Smith*, 1936, by Carl Van Vechten (©1936 Carl Van Vechten Trust); unveiling at The Air Zoo, a Smithsonian Affiliate; information along the Asia Trail

"The Smithsonian in 2006," clockwise from bottom left: *Shiva Nataraja (Lord of the Dance)*, bronze, India, circa 990; Hope diamond; One-Cent Z Grill stamp; basket weaving, Folklife Festival; staggerwing biplane; Mark Catesby illustration; wood face mask, Gabon; wood crest mask, Nigeria; E.A. Séguy pochoir print on a Smithsonian Web site; marine cyanobacteria *Lyngbya confervoides*; Ding ware bottle, China; Cizhou ware wine jar, Northern China; at *Space Day*; insects in *Colombia at the Smithsonian*

Opposite "Contents" page: Clouded leopard

Page 2: Reynolds Center F Street entrance

Page 3, from left: Luce Foundation Center for American Art; Lunder Conservation Center

Page 4: Nam June Paik's *Electronic Superhighway*

Page 5: Gilbert Stuart's *George Washington*

Page 6: Site chosen for the National Museum of African American History and Culture; pew from Chicago's Quinn Chapel African American Methodist Episcopal Church

Page 7, clockwise from upper left: *Henry Highland Garnet*, circa 1881, by James U. Stead; *Bessie Smith*, 1936, by Carl Van Vechten (©1936 Carl Van Vechten Trust); *Sojourner Truth*, circa 1870, by Randall Studio; *Muhammad Ali*, 1966, by Gordon Parks (©Gordon Parks)

Page 8: Fujifilm Giant Panda Habitat; Curiosity Station

Page 9: Sloth bear

Page 10, from left: Early Eocene fossil leaf; fieldwork in the Bighorn Basin, Wyoming; fossil leaf of the genus *Machaerium*

Page 11: Scott Wing and intern Liz Lovelock

Page 12: *Gems and Minerals* at Durham Western Heritage Museum

Page 13: Apollo 9 module at San Diego Air and Space Museum; *Gems and Minerals* at Durham Western Heritage Museum

Page 14: Filming curator Valerie Neal at Udvar-Hazy Center

Page 15: Magazine cover for May 2006; *Best of the National Air and Space Museum*, by Robert Van Der Linden; filming curator Doug Owsley and a team of scientists at Natural History Museum

Page 20, from left: Rendering of the planned entrance to the Star-Spangled Banner Gallery; reading about renovation plans at American History Museum and Director Brent Glass shows a model of museum renovations

Page 21, clockwise from upper left: Dorothy's ruby slippers; composite photo of the Star-Spangled Banner; baseball autographed by Babe Ruth, 1926; a Kermit muppet made in 1969; Duke Ellington score, around 1932-1942; top hat Abraham Lincoln wore the night he was shot

Page 22, from left: Renderings of Butterfly Pavilion, Ocean Hall, and an exhibition hall on human origins; a look inside Dinosaur Hall

Page 23: Studying mummified remains; attaching a model's antenna

Page 27: *A View of the Bombardment of Fort McHenry*, J. Bower, 1816

EDUCATION AND OUTREACH

CENTER FOR FOLKLIFE AND
CULTURAL HERITAGE
Richard Kurin, Director
MRC 520, P.O. Box 37012
Washington, D.C. 20013-7012
(202) 633-5229

NATIONAL SCIENCE RESOURCES
CENTER
Sally Goetz Shuler, Executive Director
901 D St. S.W., Suite 704-B
Washington, D.C. 20024
(202) 633-2972

OFFICE OF NATIONAL PROGRAMS
Richard Kurin, Acting Director
MRC 520, P.O. Box 37012
Washington, D.C. 20013-7012
(202) 633-5229

OFFICE OF RESEARCH TRAINING
AND SERVICES
Catherine F. Harris, Director
MRC 902, P.O. Box 37012
Washington, D.C. 20013-7012
(202) 633-7070

SMITHSONIAN AFFILIATIONS
Harold A. Closter, Director
MRC 942, P.O. Box 37012
Washington, D.C. 20013-7012
(202) 633-5300

SMITHSONIAN ASIAN PACIFIC
AMERICAN PROGRAM
Franklin S. Odo, Director
MRC 516, P.O. Box 37012
Washington, D.C. 20013-7012
(202) 633-2690

THE SMITHSONIAN ASSOCIATES
Barbara Tuceling, Director
MRC 701, P.O. Box 37012
Washington, D.C. 20013-7012
(202) 357-3030

SMITHSONIAN CENTER FOR
EDUCATION AND MUSEUM STUDIES
Stephanie L. Norby, Director
MRC 508, P.O. Box 37012
Washington, D.C. 20013-7012
(202) 633-5297

SMITHSONIAN INSTITUTION
TRAVELING EXHIBITION SERVICE
Anna R. Cohn, Director
MRC 941, P.O. Box 37012
Washington, D.C. 20013-7012
(202) 633-3136

SMITHSONIAN LATINO CENTER
Pilar F. O'Leary, Director
MRC 512, P.O. Box 37012,
Washington, D.C. 20013-7012
(202) 633-1240

The Smithsonian's 2006 annual report, *Illumination*, is available online at www.smithsonian.org.

To request this publication in an alternative format, call (202) 633-2400 (voice) or (202) 633-5285 (TTY).

Project Director
Kathy Lindeman

Project Assistant
Mara Jonas

Contributing Editor
William Tabor

Concept, editorial, design
Steege/Thomson Communications

Photographers
The Art Institute of Chicago
Ann Batdorf
Juan Carlos Briceño
Chip Clark
Jessie Cohen
James Di Loreto
Durham Western Heritage Museum
Matt Flynn
Bruno Frohlich
Gallagher Design
Nicole Grabow
Carl Hansen
Franko Khoury
Tim Klein
Eric Long
Joan Lord
Caroline Mah
NASA/JPL-Caltech/L. Allen and
J. Hora (SAO)
Dane Penland
Ken Rahaim
San Diego Air and Space Museum
Francesca Smith
David Sundberg/Esto
Hugh Talman
Robin Weiner/U.S. Newswire
Scott Wing



Smithsonian Institution

SMITHSONIAN INFORMATION

SI Building, Room 153
MRC 010, P.O. Box 37012
Washington, D.C. 20013-7012
Phone: (202) 633-1000
E-mail: info@si.edu
Web: www.smithsonian.org